

GRILL 2024

CONFIDENTIAL Signage Application to the HPC

Updated: May 24, 2024

[Note: Changes from April Highlighted in Blue]



EXTERIOR RENDERING



Version Submitted in April

Free standing Neon Sign will not adhere to the building. This will be rigged on to trussing and ballast with Concrete ballast

Window graphics are not final and will change.

CONFIDENTIAL



MAY UPDATE: Revised Exterior Rendering

EXTERIOR RENDERING: SOUTH FACADE (FACING W STATE STREET)



Option 1: Submitted in April

CONFIDENTIAL

MAY UPDATE: Option 2: Banner replaces graphic (pending budget and approvals)



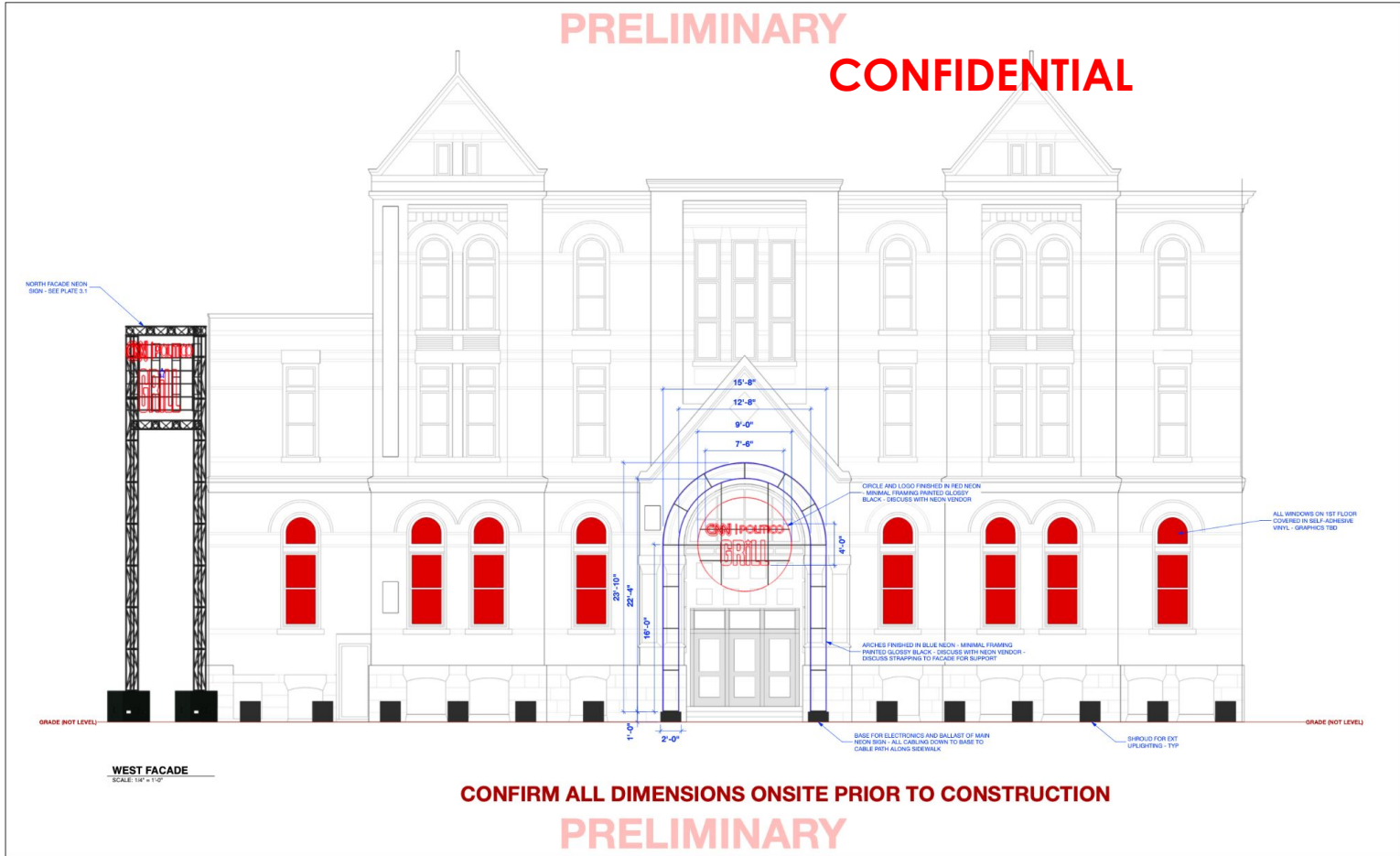
Banner would be hung from building via eye bolts

Graphic shown here is FPO

Signage Elevations*
[*NO MAY UPDATES]

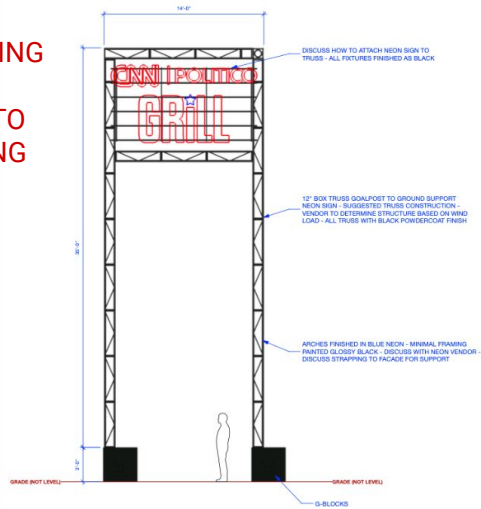
ELEVATION- EXTERIOR SIGNAGE - WEST FACADE

PRELIMINARY
CONFIDENTIAL

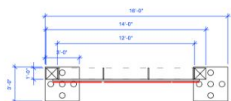


PRELIMINARY CONFIDENTIAL

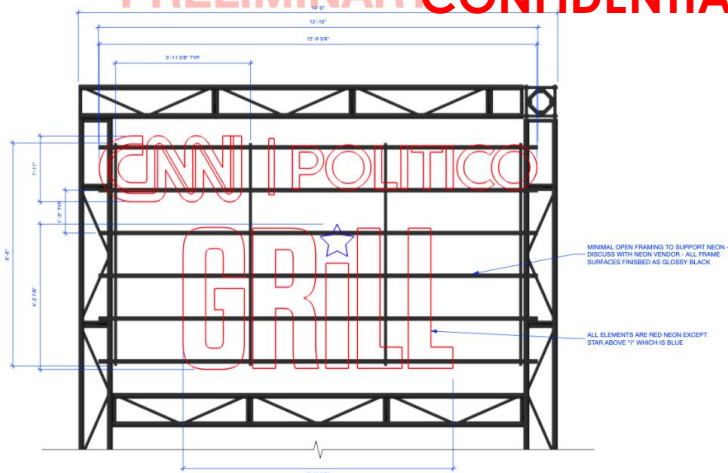
FREESTANDING / NOT ATTACHED TO THE BUILDING



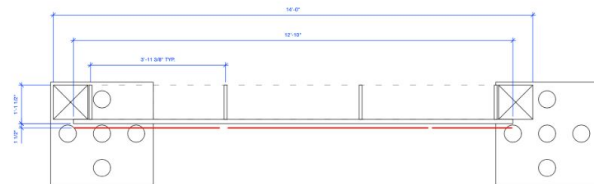
FRONT ELEVATION
SCALE: 1/4" = 1'-0"



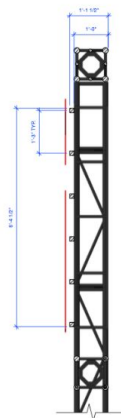
PLAN VIEW
SCALE: 1/4" = 1'-0"



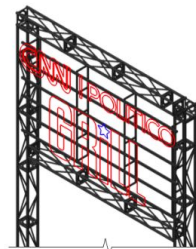
ELEVATION - DETAIL
SCALE: 3/8" = 1'-0"



PLAN - DETAIL
SCALE: 3/8" = 1'-0"



SECTION - DETAIL
SCALE: 3/8" = 1'-0"

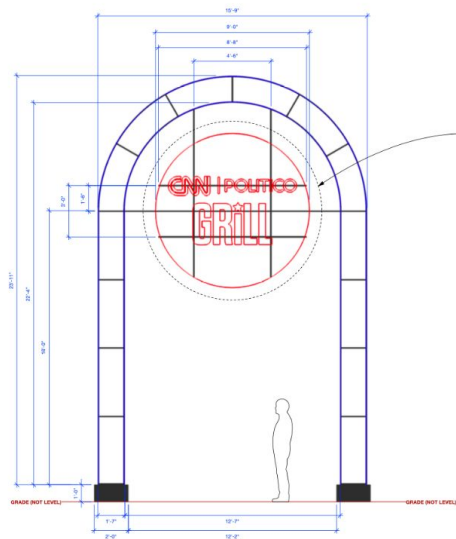


ISO VIEW
SCALE: 3/8" = 1'-0"

CONFIRM ALL DIMENSIONS ONSITE PRIOR TO CONSTRUCTION

PRELIMINARY

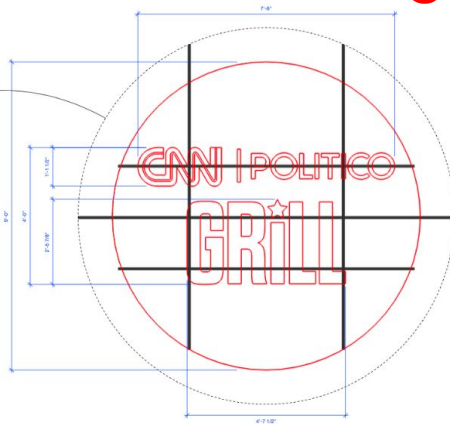
PRELIMINARY
CONFIDENTIAL



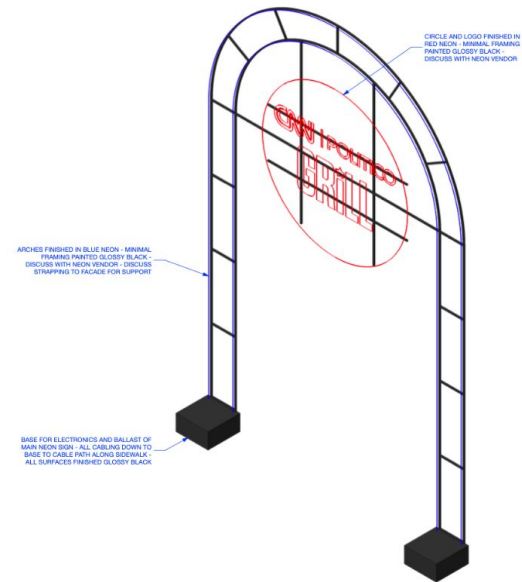
FRONT ELEVATION
SCALE: 3/8" = 1'-0"



PLAN VIEW
SCALE: 3/8" = 1'-0"



ELEVATION - DETAIL
SCALE: 3/4" = 1'-0"



ISO VIEW
SCALE: 1/2" = 1'-0"

CONFIRM ALL DIMENSIONS ONSITE PRIOR TO CONSTRUCTION

PRELIMINARY

Existing Turner Hall Signage

CONFIDENTIAL

**MAY UPDATE:
SIGN TO REMAIN AS IS OR
REMOVED, STORED for
RE-INSTALLATION, TBD**

SIGN TO REMAIN AS IS.

11'-9"

**REMOVE EXISTING BLADE SIGN
SUPPORTS TO REMAIN
SIGN TO BE STORED FOR
RE-INSTALLATION**

4'-0"

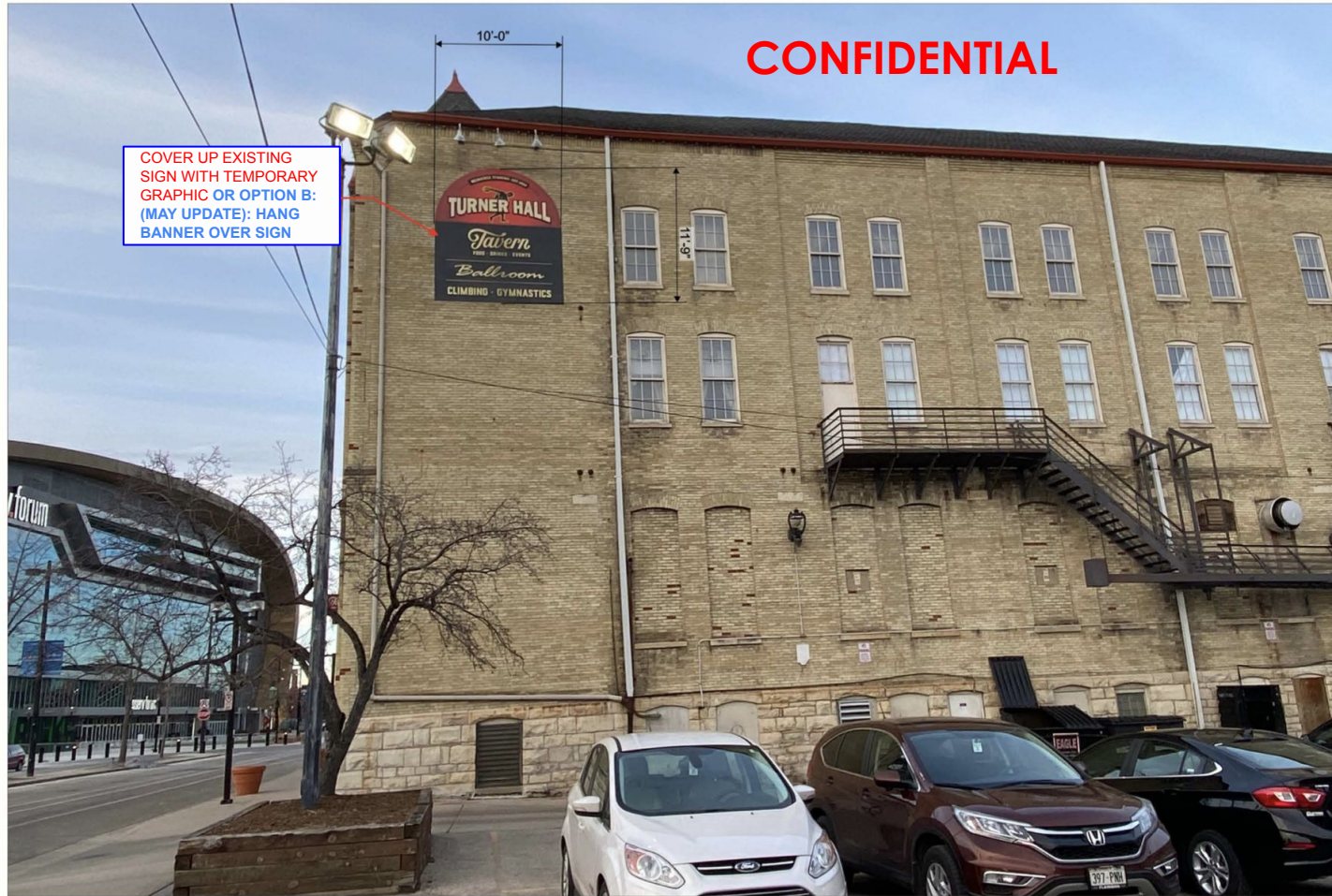
SIGN TO REMAIN AS IS.

9'-6"



CONFIDENTIAL

COVER UP EXISTING
SIGN WITH TEMPORARY
GRAPHIC OR OPTION B:
(MAY UPDATE): HANG
BANNER OVER SIGN



EXISTING