

Ave.

(70' R.O.W.)

E. Garfield

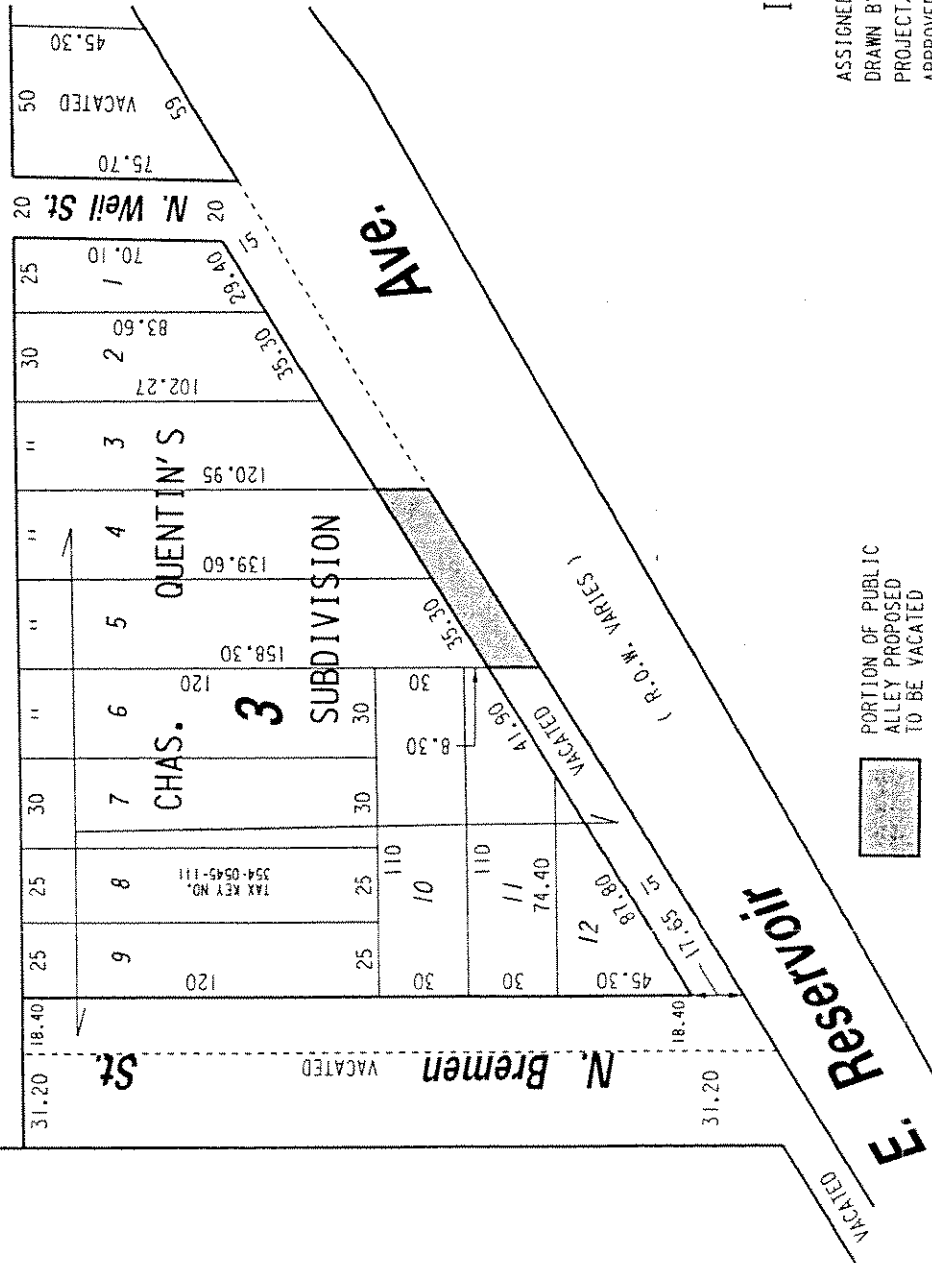


EXHIBIT "A"

FILE NO. 030443

INFRASTRUCTURE SERVICES DIVISION

MILWAUKEE, WISCONSIN

ASSIGNED TO: P.A. VELLA CH'K'D. BY: W.E. FUCHS

DRAWN BY: P.A.V. DATE: FEB. 11, 2005

PROJECT/GRANT NO.: WK52337207 SCALE: 1" = 50'

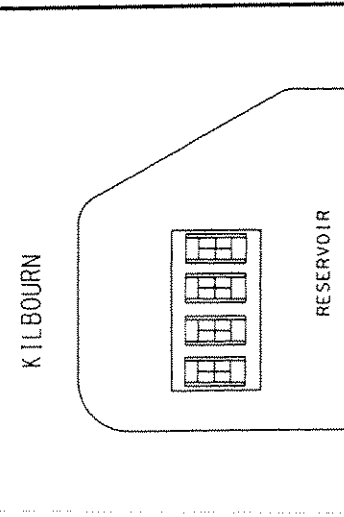
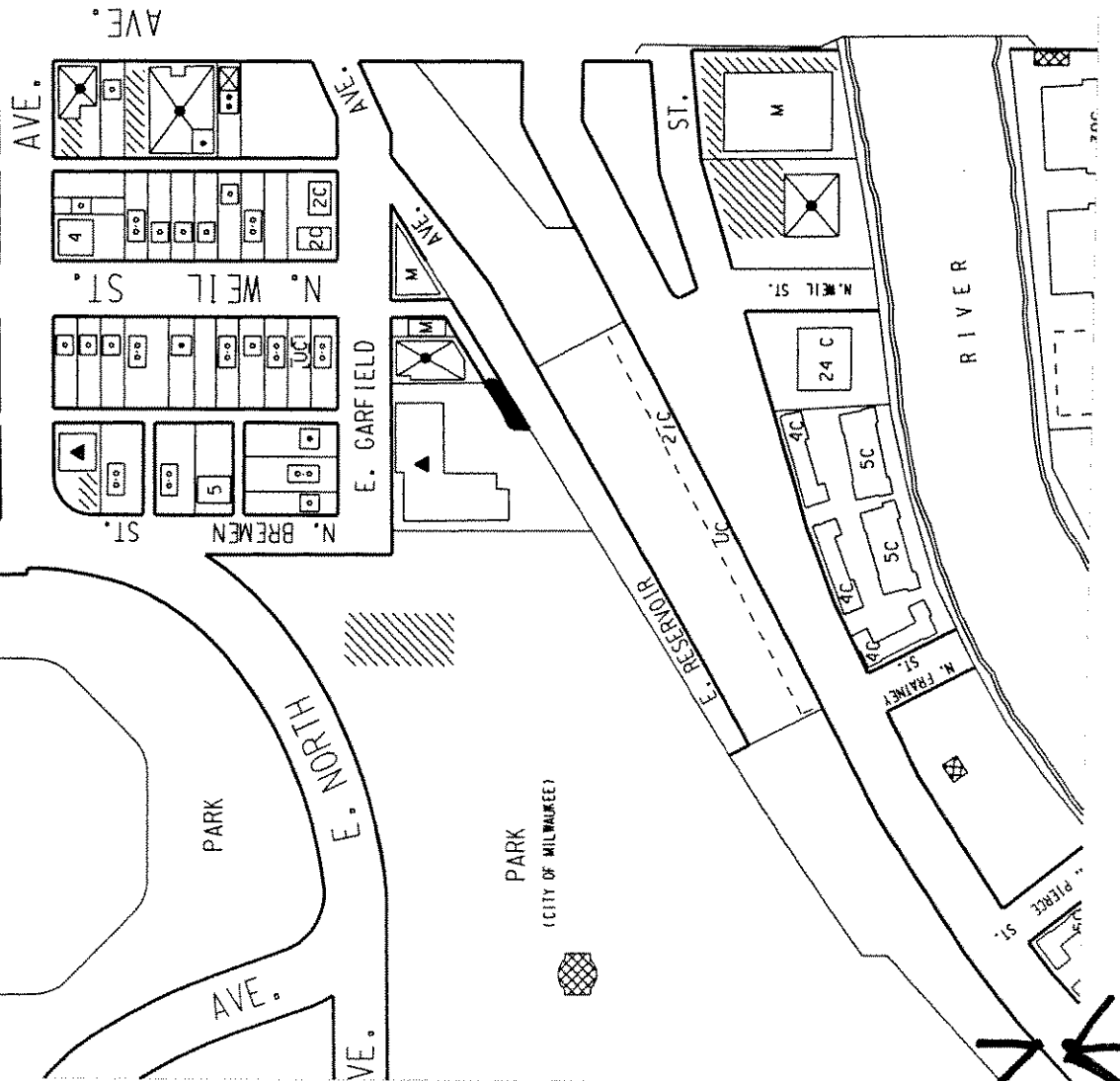
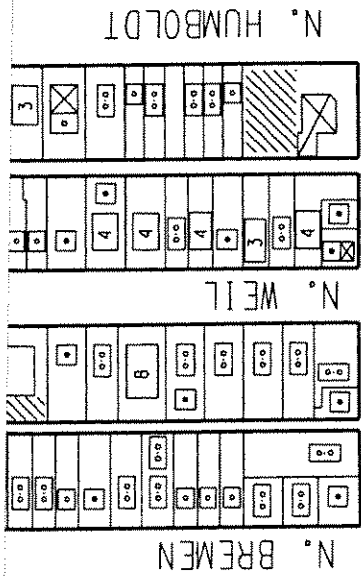
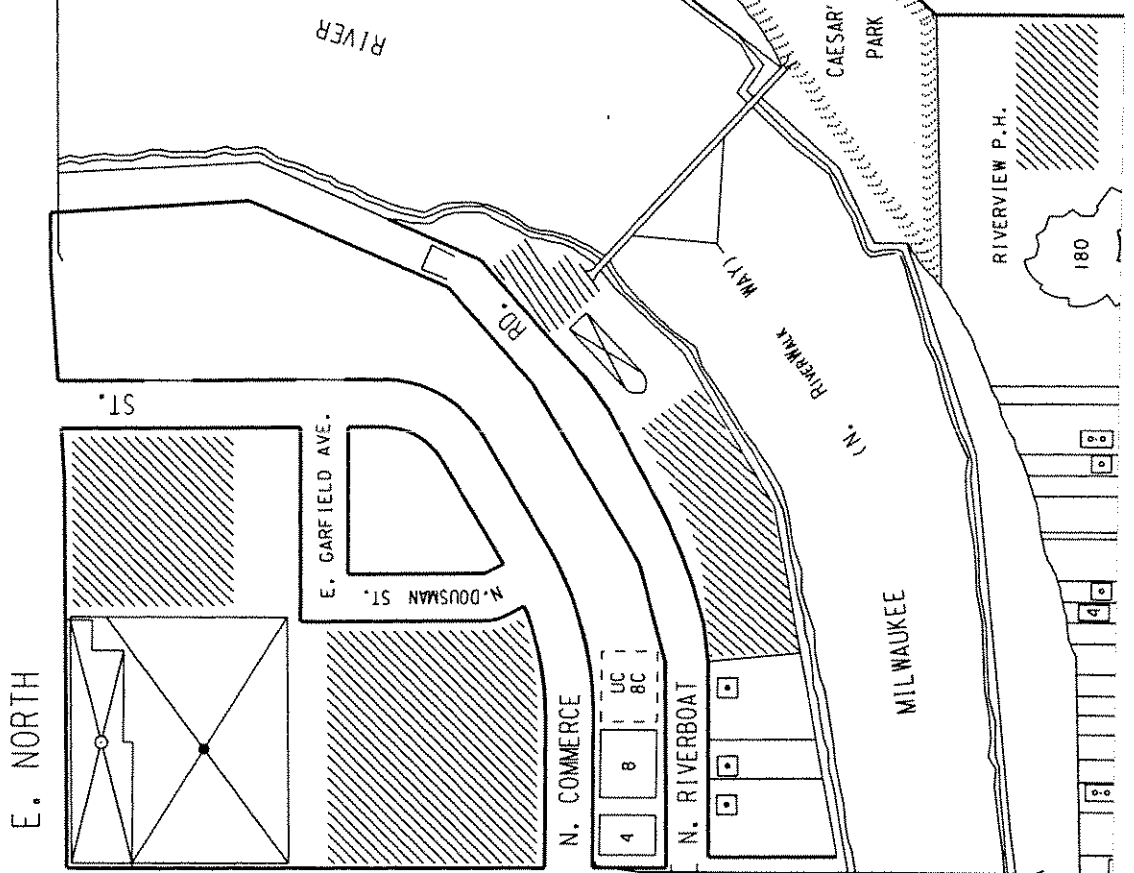
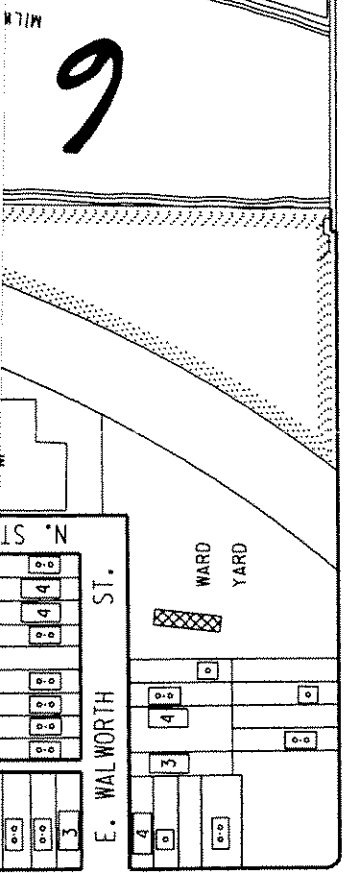
APPROVED BY:

PORTION OF PUBLIC ALLEY PROPOSED TO BE VACATED



Maxim Lindholm
CENTRAL DRAFTING & RECORDS MANAGER

ENGINEER



MILWAUKEE

6

RIVER

CAESAR PARK

RIVERVIEW P.H.

180

MILWAUKEE

E. NORTH

ST.

E. GARFIELD AVE.

N. DOUSMAN ST.

N. COMMERCE

N. RIVERBOAT

N. HUMBOLDT

AVE.

AVE.

AVE.

N. WEIL ST.

E. GARFIELD

N. BREMEN

ST.

E. RESERVOIR

N. MIL ST.

RIVER

N. FRANCK

ST.

KILBOURN

RESERVOIR

PARK

E. NORTH

AVE.

VE.

PARK

(CITY OF MILWAUKEE)

