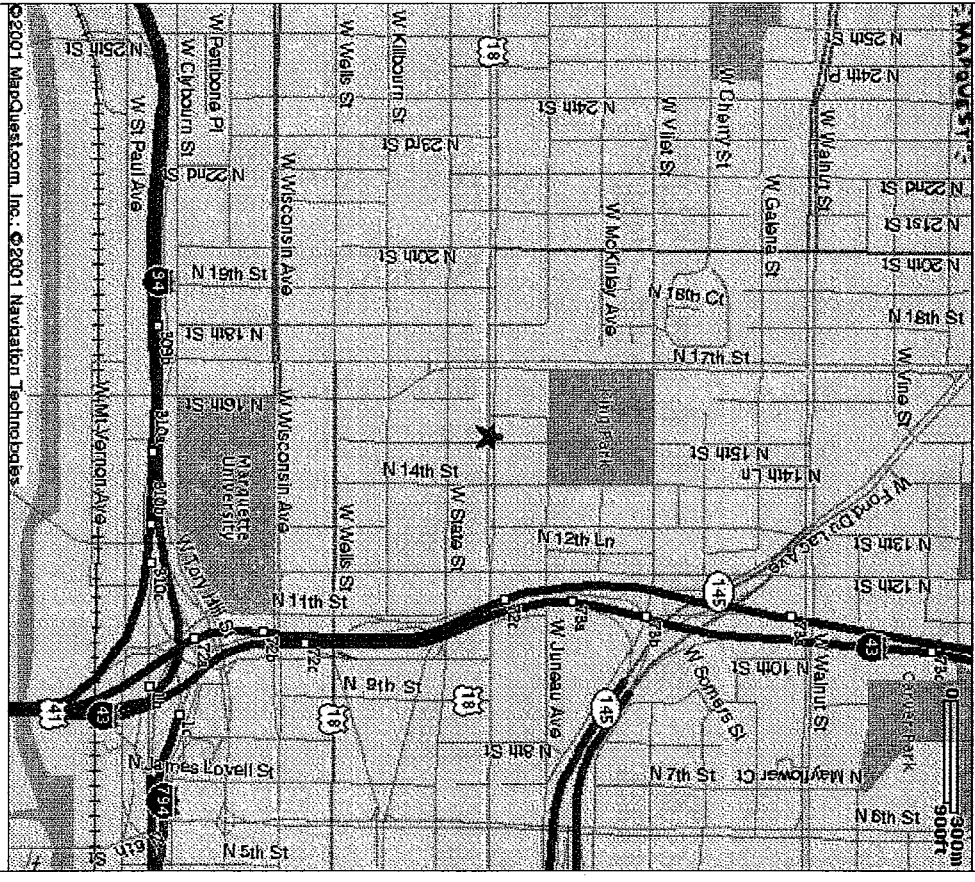


SOS Children's Village (DPD)

West Highland Avenue @ North 14th Street Milwaukee, Wisconsin

VICINITY MAP



PARTICIPANTS

OWNER:
SOS Children's Village of Wisconsin-Milwaukee Chapter
421 West North Avenue
Milwaukee, WI 53212
Tel: (414) 263-6544
Fax: (414) 263-6675

ARCHITECT:
T-3 Group, Ltd.
222 East Erie Street
Milwaukee, WI 53202
Tel: (414) 272-4440
Fax: (414) 272-7875

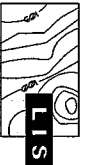
GENERAL CONTRACTOR/ CONSTRUCTION MANAGER:
T-3 Group, Ltd.
222 East Erie Street
Milwaukee, WI 53202
Tel: (414) 272-4440
Fax: (414) 272-7875

INDEX OF DRAWINGS

ARCHITECTURAL:	DATE
T1 TITLE SHEET	06.11.01
SURVEY	5.10.01
V1 VICINITY MAP	06.11.01
P1 PHOTO KEY	06.11.01
S11 SITE PLAN	06.11.01
S12 GRADING & UTILITY PLAN	06.11.01
L9P1 LANDSCAPE PLAN	06.11.01
A11 FINISHED BASEMENT PLAN	06.11.01
A12 1ST FL. & PORCH OPT PLAN	06.11.01
A13 2ND FL. & ROOF PLAN	06.11.01
A21 ELEVATIONS	06.11.01
A22 ELEVATIONS	06.11.01

T-3 GROUP, LTD. 2000 ALL RIGHTS RESERVED - THIS DRAWING IS NOT TO BE REPRODUCED, CHANGED, COPIED OR ASSIGNED TO ANY THIRD PARTY IN ANY FORM OR MANNER WITHOUT FIRST OBTAINING THE EXPRESSED WRITTEN PERMISSION OF T-3 GROUP, LTD. THE CLIENT AGREES TO INDEMNIFY AND HOLD THE ARCHITECT HARMLESS FROM ANY DAMAGES, LIABILITY, OR COST, INCLUDING ATTORNEY'S FEES AND COSTS OF DEFENSE ARISING FROM ANY CHANGES OR ALTERATIONS MADE BY ANYONE OTHER THAN THE ARCHITECT, OR FROM ANY REUSE OF THE DRAWINGS OR DATA WITHOUT THE PRIOR WRITTEN CONSENT OF THE ARCHITECT.

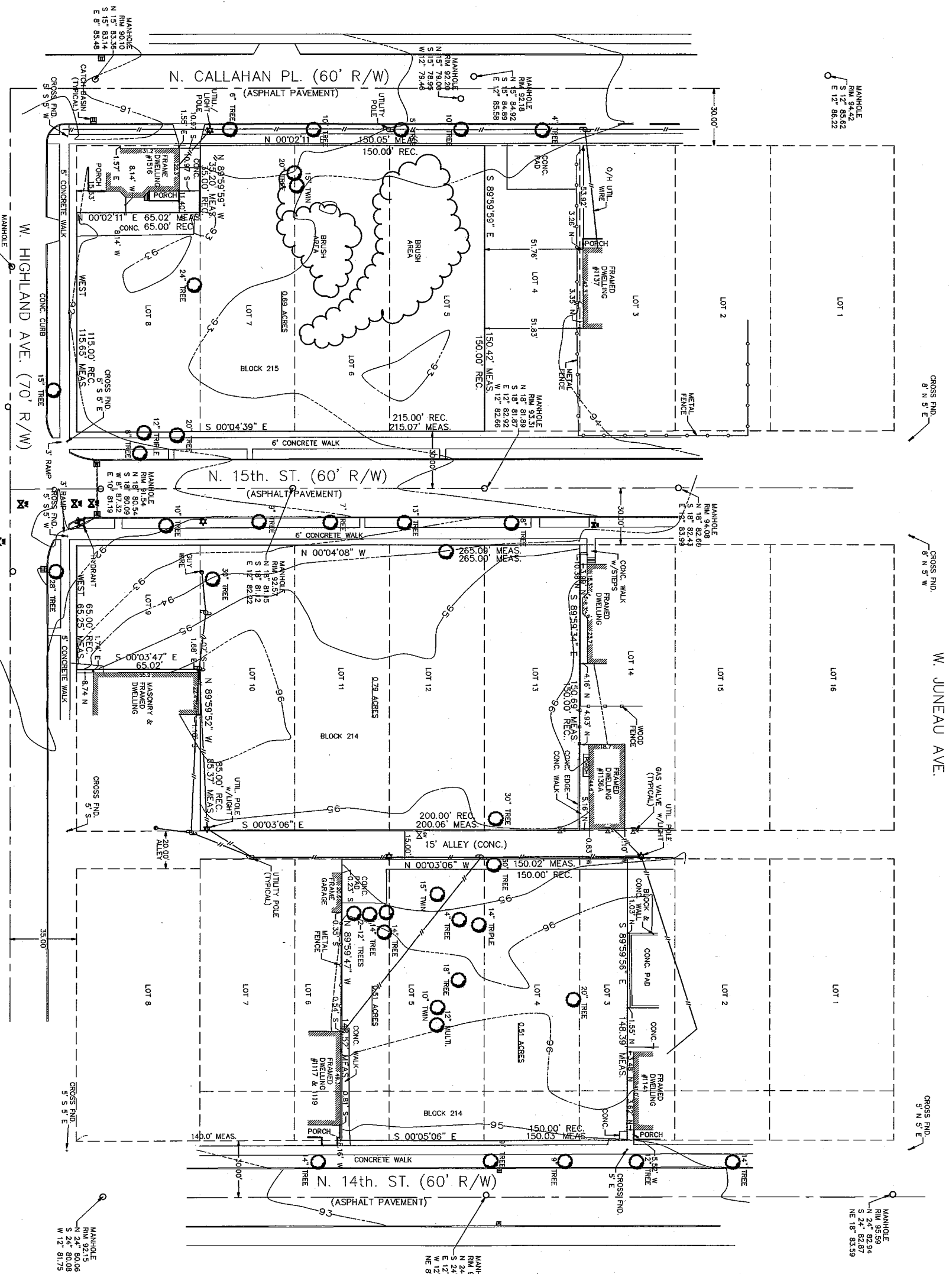
<p>Revisions:</p>	<p>Project:</p>	<p>T-3 GROUP, LTD. 222 East Erie Street Milwaukee, Wisconsin 53202 Tel: 414-272-4440 Fax: 414-272-7875</p>	<p>SOS Children's Village W. Highland Ave. @ N 14th St. Milwaukee, Wisconsin</p>
<p>Drawing Title: TITLE SHEET</p>		<p>Date: 06.11.01 Scale: NONE Drawn: BJL/RCK Job: CV342 Sheet: 1</p>	



**ENGINEERS SURVEYORS
AND CONSULTANTS**
T48 N. DR. MARTIN LUTHER KING JR. DR.
HILLSDALE, PA 15120
PHONE: 414-261-2229
FAX: 414-261-2223
www.lisinc.com

- NOTES:
NOT IN FLOOD PLAIN
A. PER FEMA MAP PANEL # 55027B-0013C
11-15-88 ZONE C
B. ZONED RESIDENTIAL RA 85
C. FRONT SETBACK 8'
SIDE SETBACK 6'
REAR SETBACK 6'
D. SETBACKS MAY VARY BASED ON BUILDING HEIGHTS, SEE 205-135 CITY ZONING CODES.

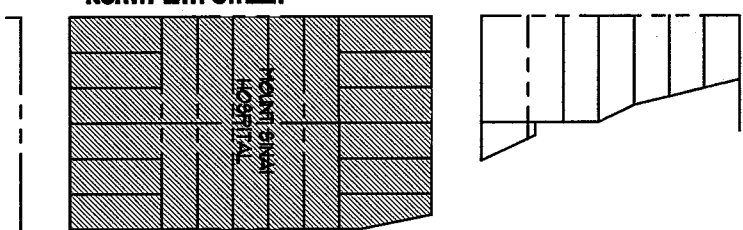
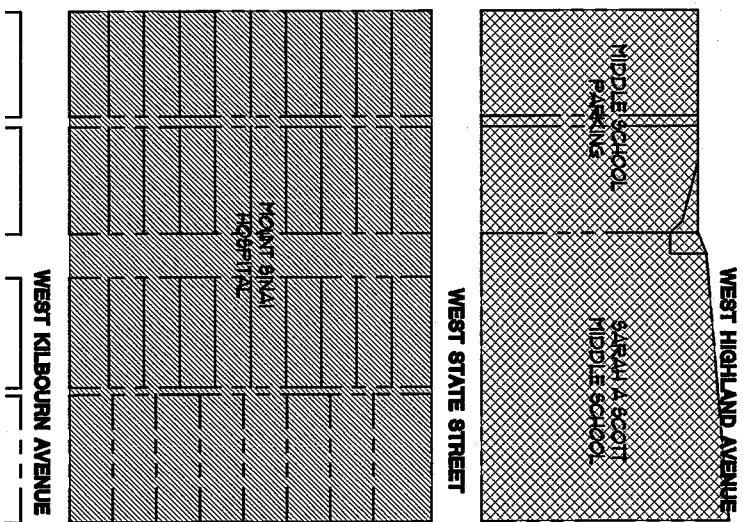
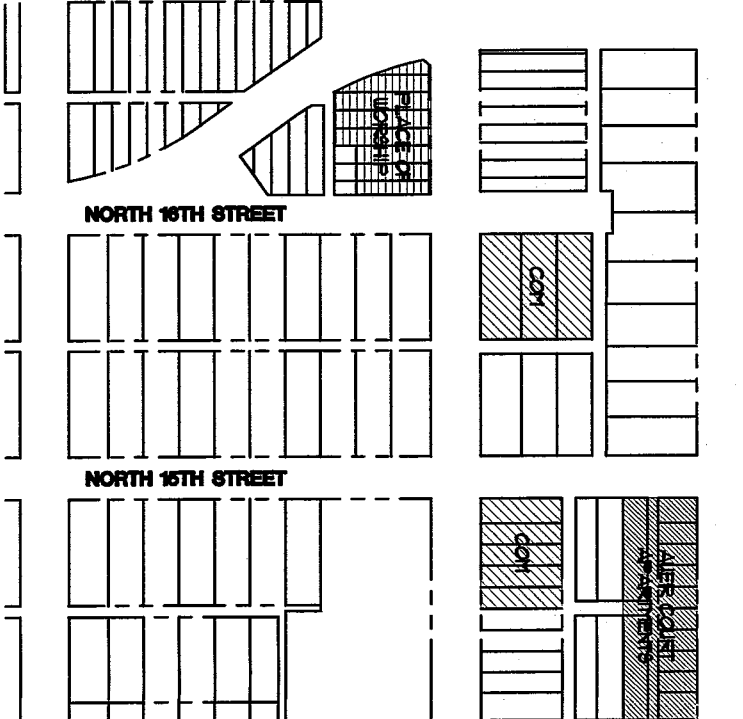
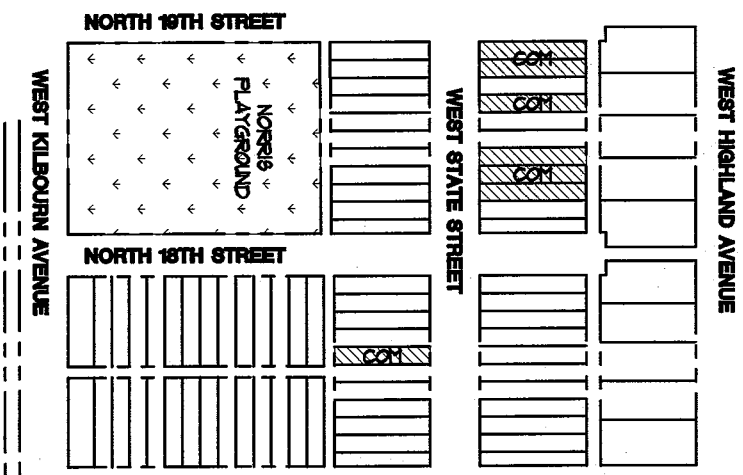
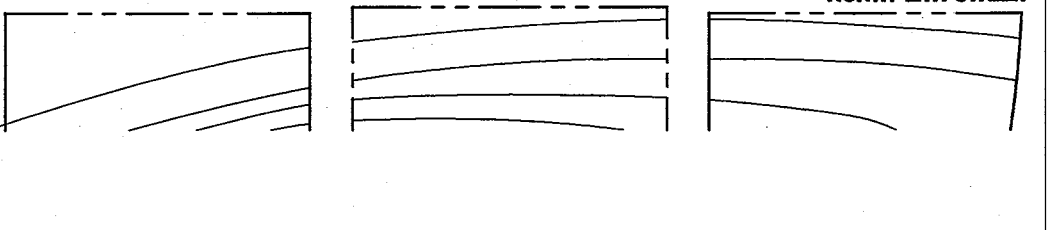
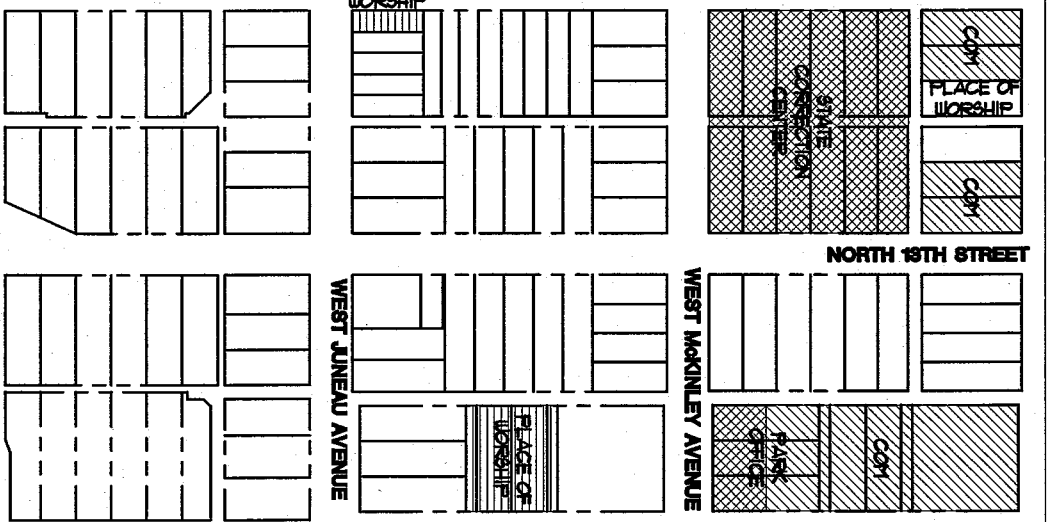
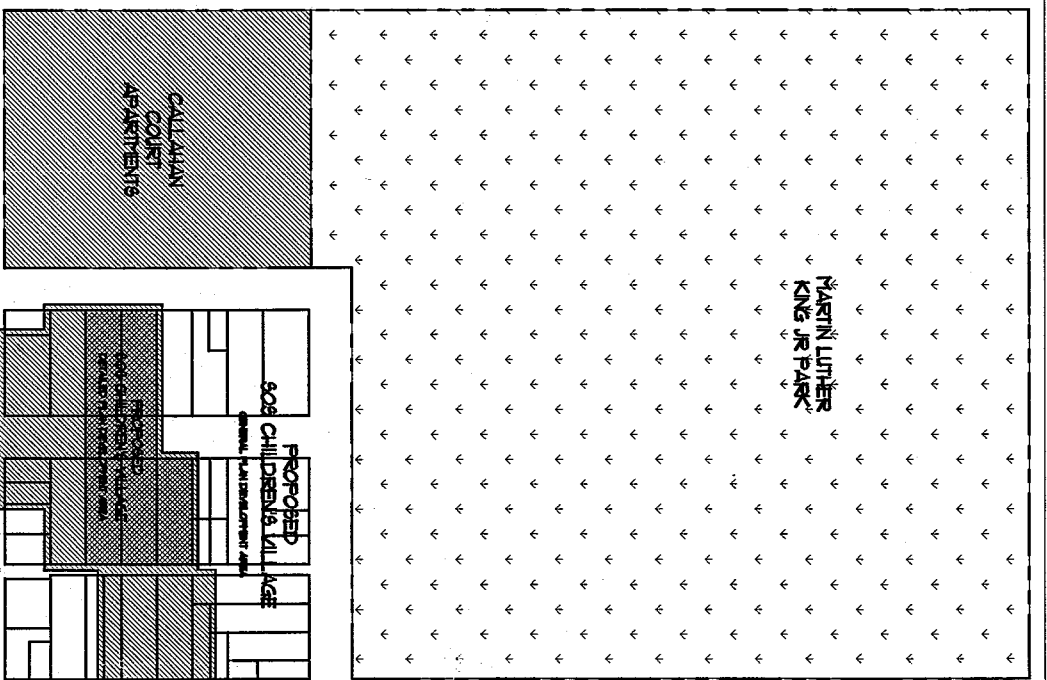
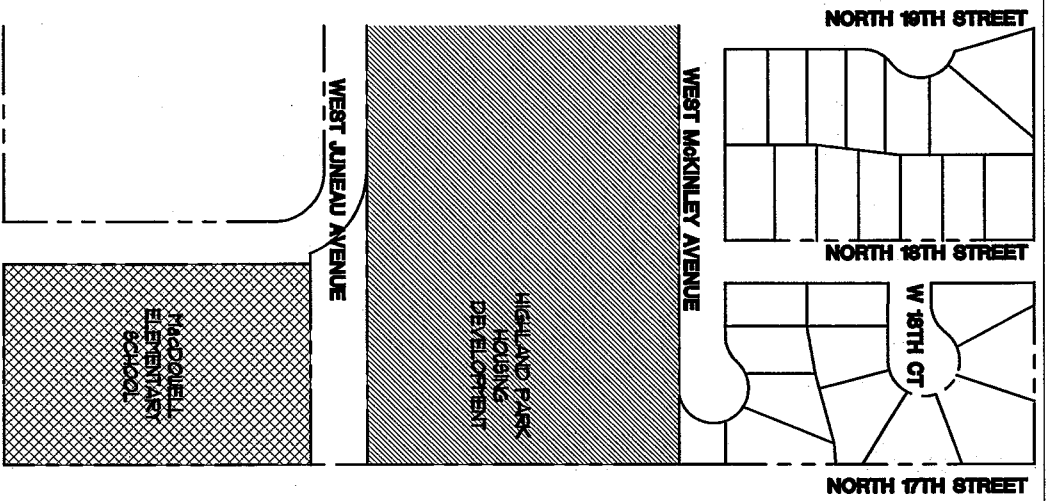
NOTE:
BOUNDARY LINES BASED IN BEST AVAILABLE EVIDENCE MUST BE VERIFIED BY RECORDED DOCUMENTS.



TO OBTAIN PERMISSION TO
REPRODUCE THIS DOCUMENT
FOR ANY PURPOSE,
CONTACT THE SURVEYOR
FOR THE ORIGINAL RECORD.

LEGEND

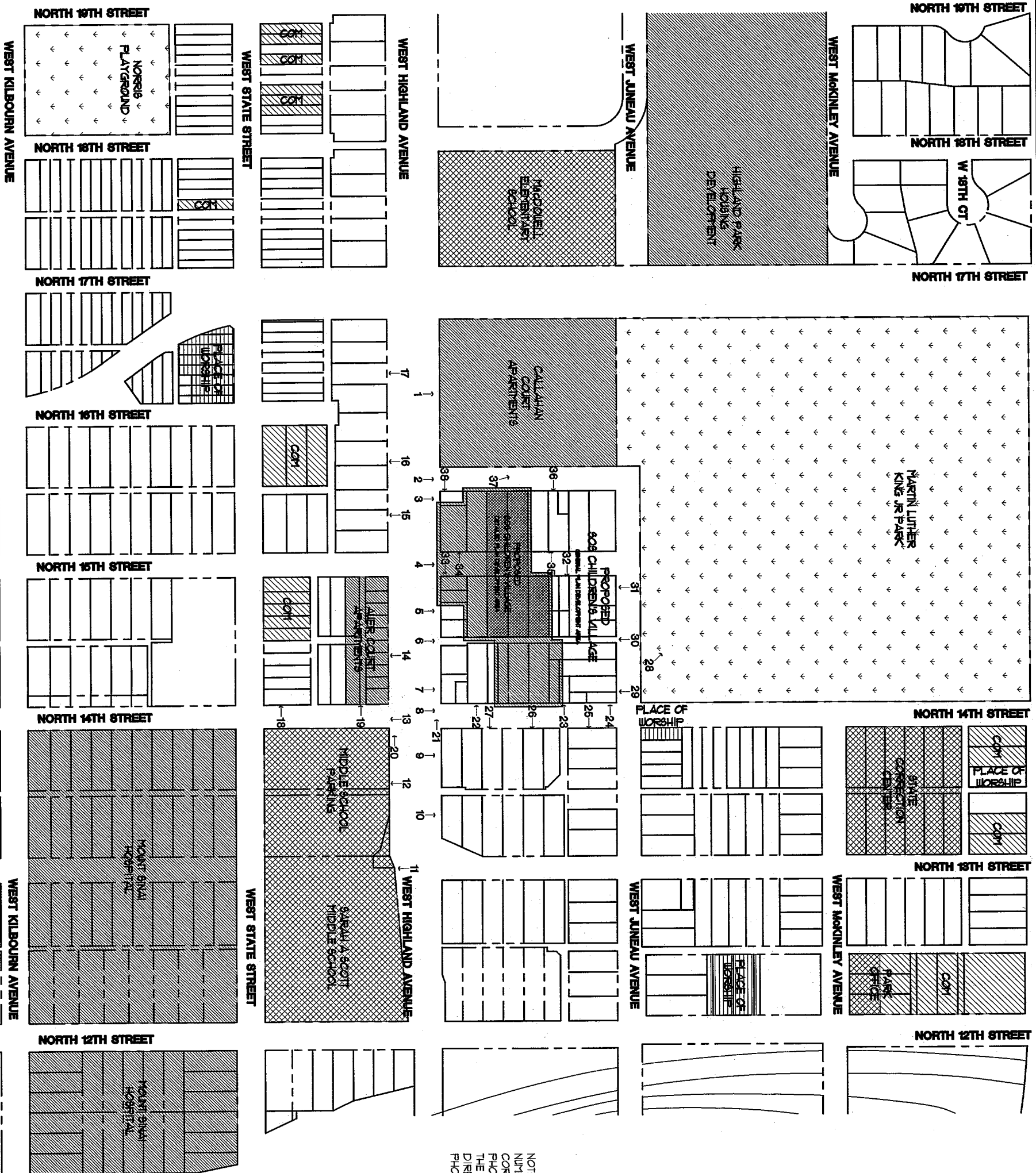
DRAIN BY: G.G.
CHECKED BY: T.L.L.
DATE: 05/10/01
JOB NUMBER: 501069D



VICINITY MAP
NTS
1
CI

© T-3 GROUP, LTD., 2000. ALL RIGHTS RESERVED - THIS DRAWING IS NOT TO BE REPRODUCED, CHANGED, COPIED OR ASSIGNED TO ANY THIRD PARTY IN ANY FORM OR MANNER WITHOUT FIRST OBTAINING THE EXPRESSED WRITTEN PERMISSION OF T-3 GROUP, LTD. THE CLIENT AGREES TO INDEMNIFY AND HOLD THE ARCHITECT HARMLESS FROM ANY DAMAGES, LIABILITY, OR COST, INCLUDING ATTORNEY'S FEES AND COSTS OF DEFENSE ARISING FROM ANY CHANGES OR ALTERATIONS MADE BY ANYONE OTHER THAN THE ARCHITECT, OR FROM ANY REUSE OF THE DRAWINGS OR DATA WITHOUT THE PRIOR WRITTEN CONSENT OF THE ARCHITECT.

Drawing Title: VICINITY MAP	T-3 GROUP, LTD. 222 East Erie Street Milwaukee, Wisconsin 53202 Tel: 414-272-4440 Fax: 414-272-7875	SOS Children's Village W. Highland Ave. @ N 14th St. Milwaukee, Wisconsin	Project:	Revisions:
Date: 06.11.01 Scale: NTS Drawn: RCK Job: CV342 Sheet:				



NOTE:
 NUMBERS & ARROWS
 CORRESPOND TO
 PHOTO NUMBER AND
 THE GENERAL
 DIRECTION THE
 PHOTO IS TAKEN

PHOTO KEY 1
 NTS
 CI

RIGHT T-3 GROUP, LTD., 2000 ALL RIGHTS RESERVED - THIS DRAWING IS NOT TO BE REPRODUCED, CHANGED, COPIED OR ASSIGNED TO ANY THIRD PARTY IN ANY FORM OR MANNER WITHOUT FIRST OBTAINING THE EXPRESSED WRITTEN PERMISSION OF T-3 GROUP, LTD. THE CLIENT AGREES TO INDEMNIFY AND HOLD THE ARCHITECT HARMLESS FROM ANY DAMAGES, LIABILITY, OR COST, INCLUDING ATTORNEY'S FEES AND COSTS OF DEFENSE ARISING FROM ANY CHANGES OR ALTERATIONS MADE BY ANYONE OTHER THAN THE ARCHITECT, OR FROM ANY REUSE OF THE DRAWINGS OR DATA WITHOUT THE PRIOR WRITTEN CONSENT OF THE ARCHITECT.

Drawing Title: PHOTO KEY	T-3 GROUP, LTD. 222 East Erle Street Milwaukee, Wisconsin 53202 Tel: 414-272-4440 Fax: 414-272-7875	SOS Children's Village W. Highland Ave. @ N 14th St. Milwaukee, Wisconsin	Project:	Revisions:
Date: 06.11.01 Scale: NTS Drawn: RCK Job: CV342 Sheet:				

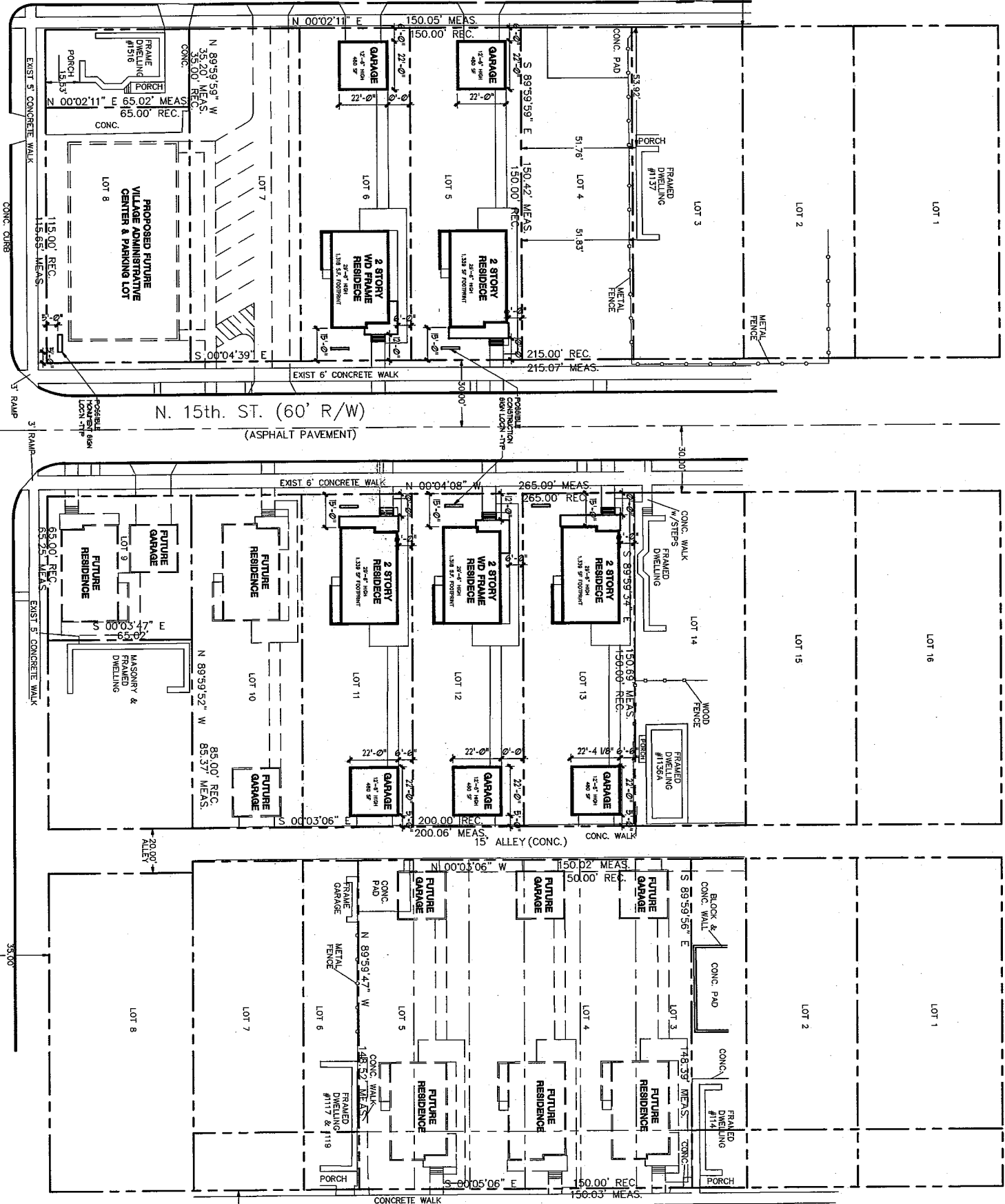
N. CALLAHAN PL. (60' R/W)
(ASPHALT PAVEMENT)

N. 15th. ST. (60' R/W)
(ASPHALT PAVEMENT)

W. HIGHLAND AVE. (70' R/W)

N. 14th. ST. (60' R/W)
(ASPHALT PAVEMENT)

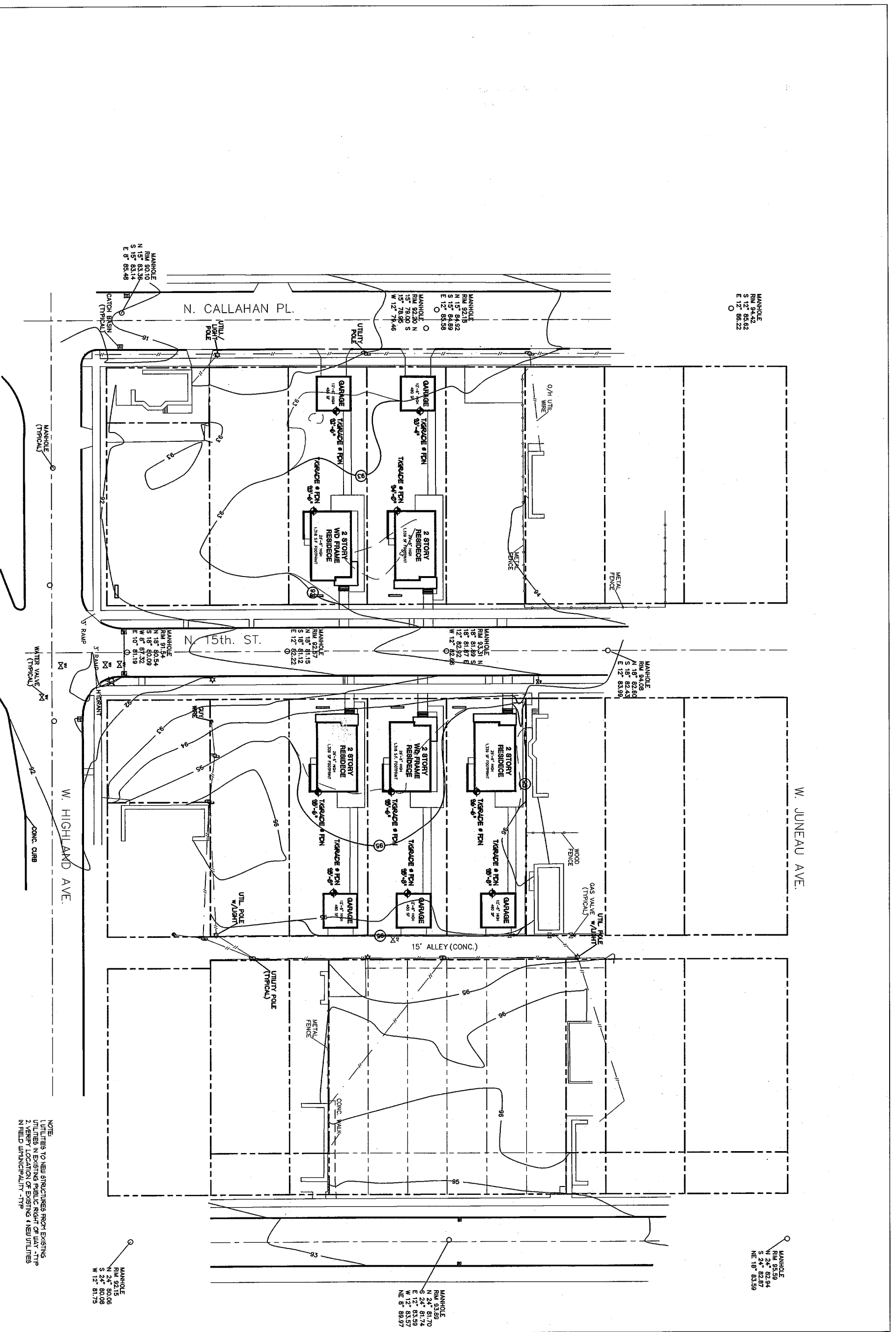
W. JUNEAU AVE.



SITE PLAN
1
SP11

RIGHT T-3 GROUP, LTD., 2000 ALL RIGHTS RESERVED - THIS DRAWING IS NOT TO BE REPRODUCED, CHANGED, COPIED OR ASSIGNED TO ANY THIRD PARTY IN ANY FORM OR MANNER WITHOUT FIRST OBTAINING THE EXPRESSED WRITTEN PERMISSION OF T-3 GROUP, LTD. THE CLIENT AGREES TO INDEMNIFY AND HOLD THE ARCHITECT HARMLESS FROM ANY DAMAGES, LIABILITY, OR COST, INCLUDING ATTORNEY'S FEES AND COSTS OF DEFENSE ARISING FROM ANY CHANGES OR ALTERATIONS MADE BY ANYONE OTHER THAN THE ARCHITECT, OR FROM ANY REUSE OF THE DRAWINGS OR DATA WITHOUT THE PRIOR WRITTEN CONSENT OF THE ARCHITECT.

Date: 06/11/01 Scale: 1"=30'-0" Drawn: BJL/RCK Job: CV342 Sheet:	T-3 GROUP, LTD. 222 East Erie Street Milwaukee, Wisconsin 53202 Tel: 414-272-4440 Fax: 414-272-7875	SOS Children's Village W. Highland Ave. @ N 14th St. Milwaukee, Wisconsin	Revisions:
--	---	--	------------

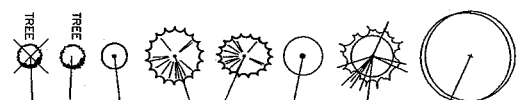
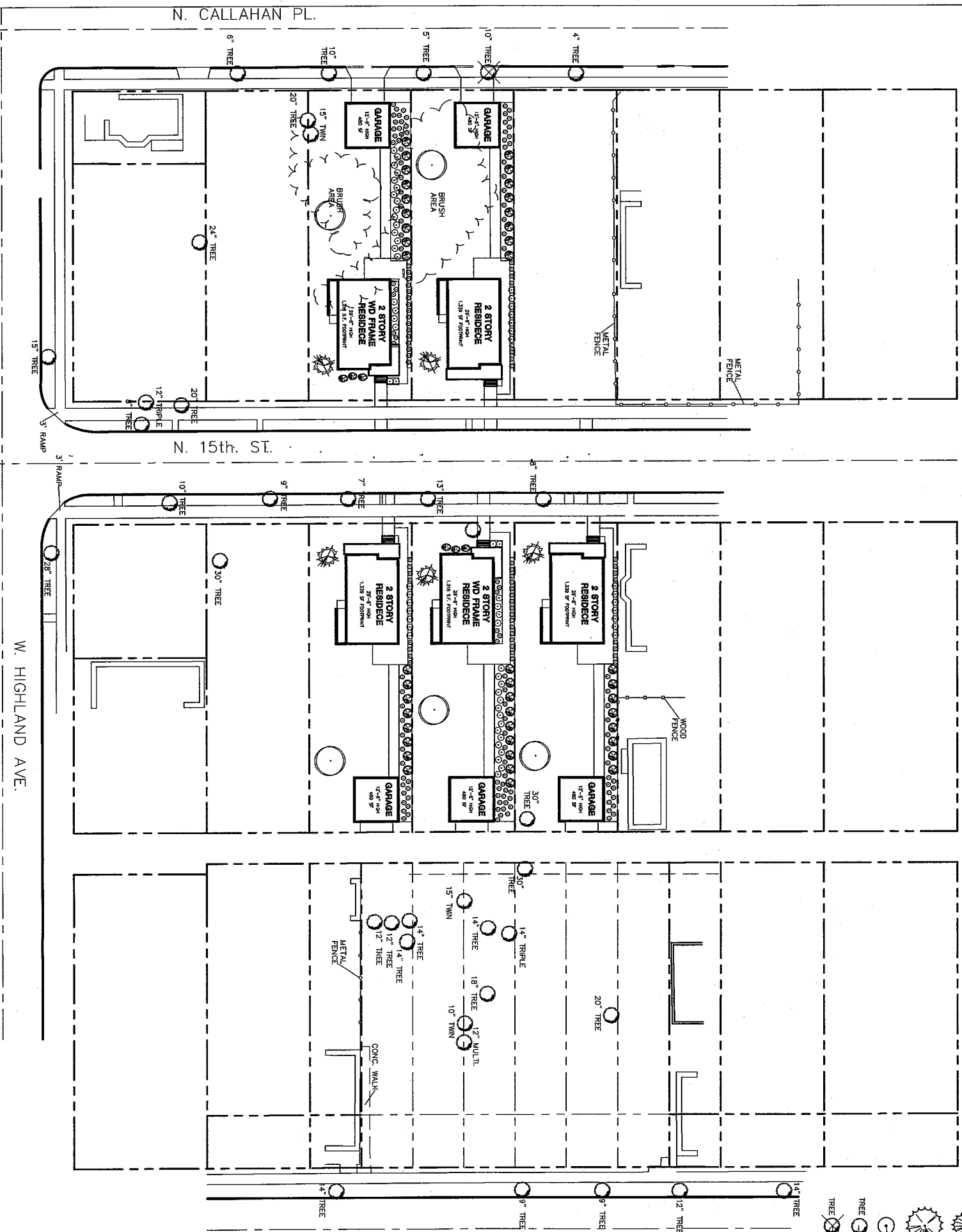


NOTE
 1. UTILITIES TO NEW STRUCTURES FROM EXISTING UTILITIES IN EXISTING PUBLIC RIGHT OF WAY - "TYP"
 2. VERIFY LOCATION OF EXISTING & NEW UTILITIES IN FIELD WITH LOCALITY - "TYP"

GRADING AND UTILITY PLAN 1
 T-300-07 SPT12

Revisions:	T-3 GROUP, LTD. 222 East Erie Street Milwaukee, Wisconsin 53202 Tel: 414-272-4440 Fax: 414-272-7875	SOS Children's Village W. Highland Ave. @ N 14th St. Milwaukee, Wisconsin	Project:
Drawing Title:	GRADING AND UTILITY PLAN		
Date:	06.11.01		
Scale:	T-300-07		
Drawn:	BLK		
Job:	CV9442		
Sheet:	1		

T-3 GROUP, LTD., 2000 ALL RIGHTS RESERVED - THIS DRAWING IS NOT TO BE REPRODUCED, CHANGED, COPIED OR ASSIGNED TO ANY THIRD PARTY IN ANY FORM OR MANNER WITHOUT FIRST OBTAINING THE EXPRESSED WRITTEN PERMISSION OF T-3 GROUP, LTD. THE CLIENT AGREES TO INDEMNIFY AND HOLD THE ARCHITECT HARMLESS FROM ANY DAMAGES, LIABILITY, OR COST, INCLUDING ATTORNEY'S FEES AND COSTS OF DEFENSE ARISING FROM ANY CHANGES OR ALTERATIONS MADE BY ANYONE OTHER THAN THE ARCHITECT, OR FROM ANY REUSE OF THE DRAWINGS OR DATA WITHOUT THE PRIOR WRITTEN CONSENT OF THE ARCHITECT.



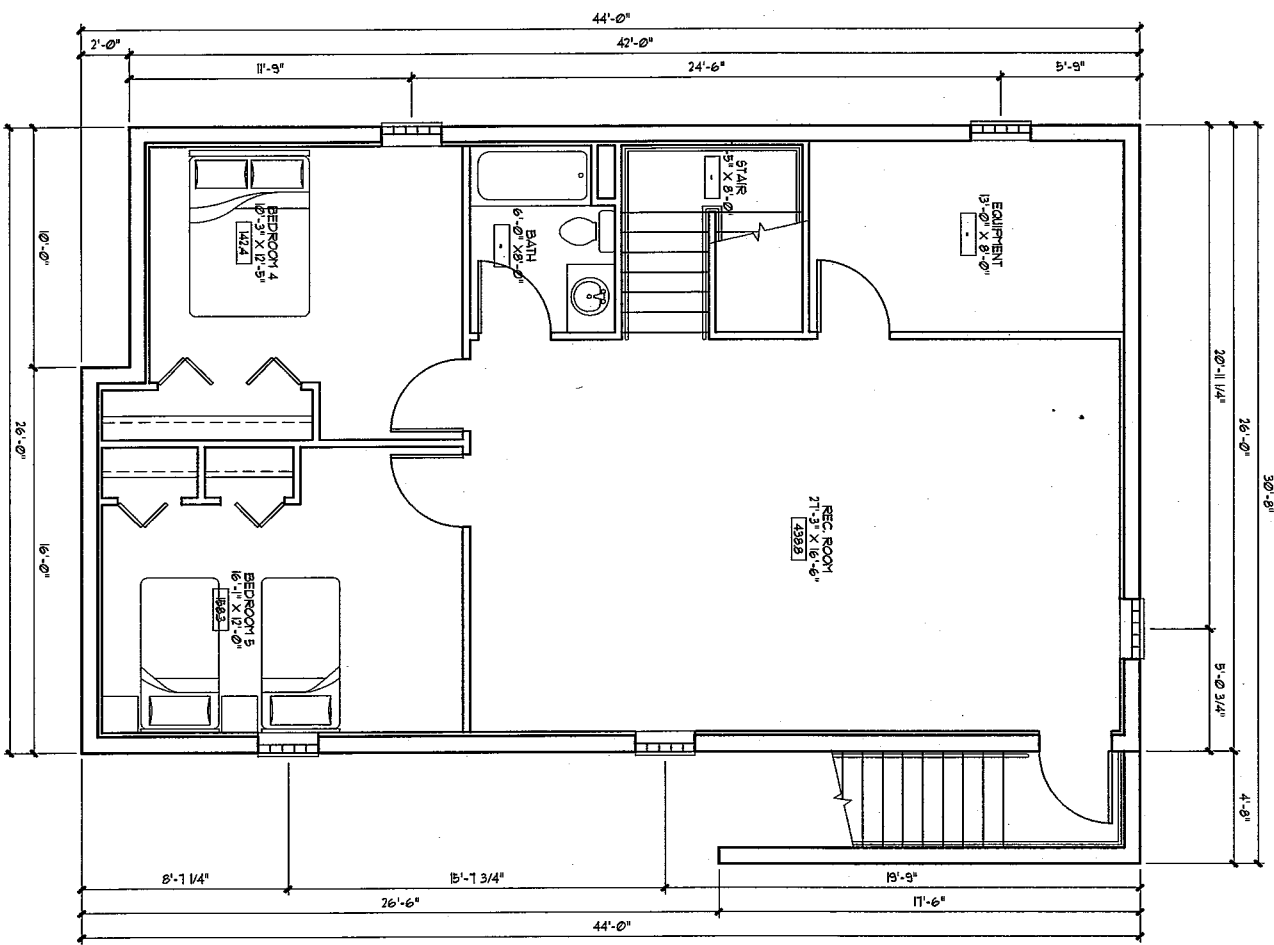
NOTE:
BRUSH AREA TO BE COMPLETELY REMOVED

LANDSCAPE PLAN		
SYMBOL	BOTANICAL NAME	COMMON NAME
SHADE TREES		
ARC	ACER PLATANOIDES 'COLTINAR'	COLTINAR NORWAY MAPLE
ORIENTAL TREES		
TRIS	YALUX X ZIMI VAR CALACARA 'RED BUD'	RED BUD CRABAPPLE
DECIDUOUS SHRUBS		
SPS	SPRAEFA X BUTHALDA 'PROBELL II'	'PROBELL II' SPREA
EVERGREEN SHRUBS		
BJ	JUNIFROJIS SABINA	SAVIN JUNIFER
TON	TAKUS CUPRODATA NANA	DWARF JAPANESE YEW
PERENNIALS & GROUND COVERS		
HAM	HOSTA LINDLATA 'ALBO-HARGINATA'	HOSTA ALBO-HARGINATA

LANDSCAPE PLAN 1
1-80-0'

RIGHT T-3 GROUP, LTD., 2000 ALL RIGHTS RESERVED - THIS DRAWING IS NOT TO BE REPRODUCED, CHANGED, COPIED OR ASSIGNED TO ANY THIRD PARTY IN ANY FORM OR MANNER WITHOUT FIRST OBTAINING THE EXPRESSED WRITTEN PERMISSION OF T-3 GROUP, LTD. THE CLIENT AGREES TO INDEMNIFY AND HOLD THE ARCHITECT HARMLESS FROM ANY DAMAGES, LIABILITY, OR COST, INCLUDING ATTORNEY'S FEES AND COSTS OF DEFENSE ARISING FROM ANY CHANGES OR ALTERATIONS MADE BY ANYONE OTHER THAN THE ARCHITECT, OR FROM ANY REUSE OF THE DRAWINGS OR DATA WITHOUT THE PRIOR WRITTEN CONSENT OF THE ARCHITECT.

Date: 08.11.01 Scale: 1"=30'-0" Drawn: BJK Job: CV342 Sheet: 1	T-3 GROUP, LTD. 222 East Erie Street Milwaukee, Wisconsin 53202 Tel: 414-272-4440 Fax: 414-272-7875	SOS Children's Village W. Highland Ave. @ N 14th St. Milwaukee, Wisconsin	Revisions:
--	---	--	------------




FINISHED BASEMENT PLAN

1

A11

T-3 GROUP, LTD., 2000 ALL RIGHTS RESERVED - THIS DRAWING IS NOT TO BE REPRODUCED, CHANGED, COPIED OR ASSIGNED TO ANY THIRD PARTY IN ANY FORM OR MANNER WITHOUT FIRST OBTAINING THE EXPRESSED WRITTEN PERMISSION OF T-3 GROUP, LTD. THE CLIENT AGREES TO INDEMNIFY AND HOLD THE ARCHITECT HARMLESS FROM ANY DAMAGES, LIABILITY, OR COST, INCLUDING ATTORNEY'S FEES AND COSTS OF DEFENSE ARISING FROM ANY CHANGES OR ALTERATIONS MADE BY ANYONE OTHER THAN THE ARCHITECT, OR FROM ANY REUSE OF THE DRAWINGS OR DATA WITHOUT THE PRIOR WRITTEN CONSENT OF THE ARCHITECT.

Drawing Title: FINISHED BASEMENT PLAN	 T-3 GROUP, LTD. 222 East Erie Street Milwaukee, Wisconsin 53202 Tel: 414-272-4440 Fax: 414-272-7875	SOS Children's Village W. Highland Ave. @ N 14th St. Milwaukee, Wisconsin	Project:	Revisions:
Date: 06.11.01 Scale: 1/4"=1'-0" Drawn: BJL Job: CV342 Sheet:				

Revisions:

Project:

SOS Children's Village
W. Highland Ave. @ N 14th St.
Milwaukee, Wisconsin

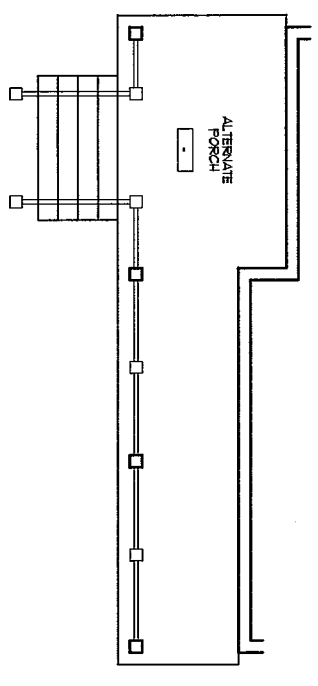
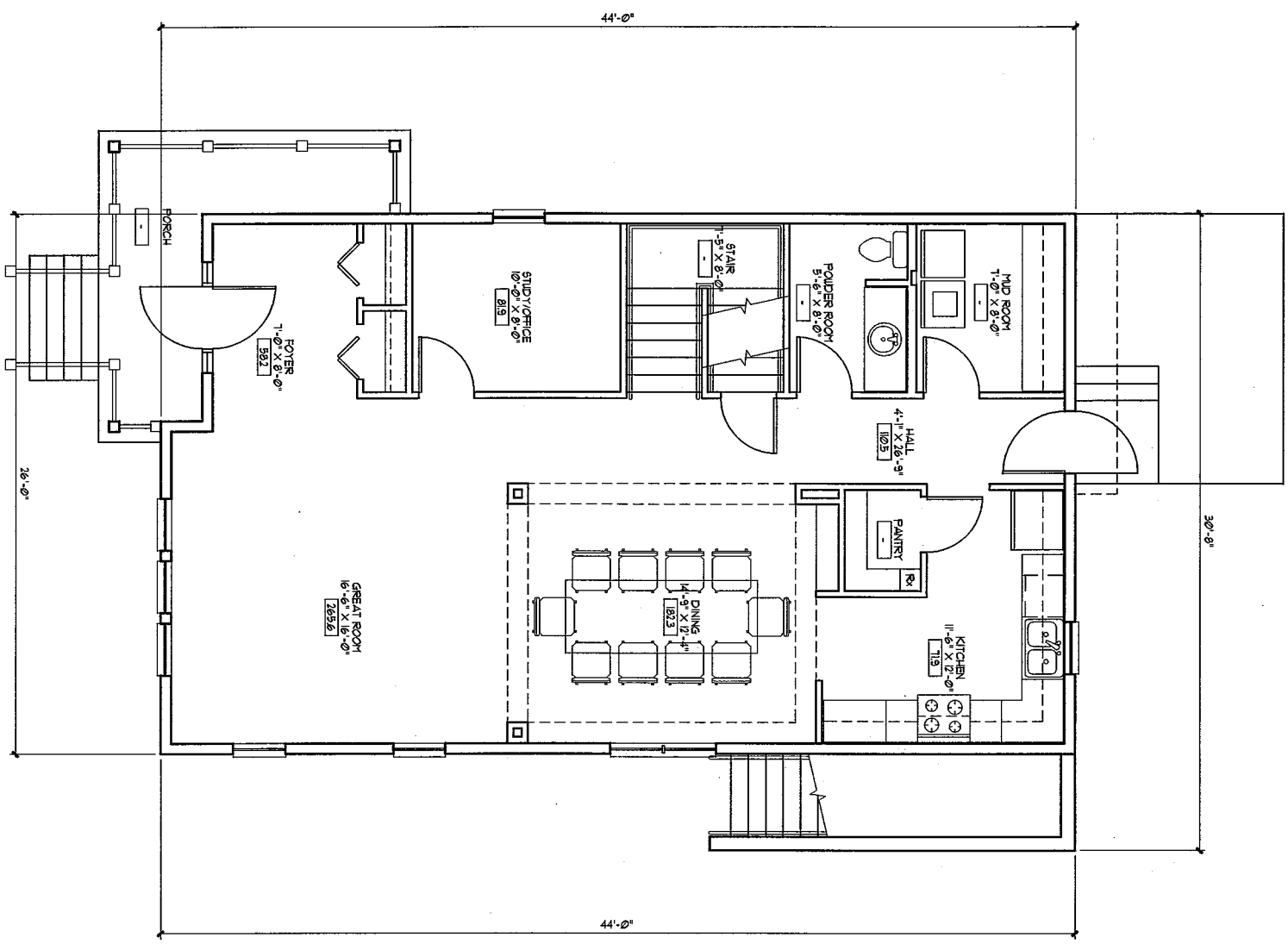
T-3 GROUP, LTD.
222 East Erie Street
Milwaukee, Wisconsin 53202
Tel: 414-272-4440 Fax: 414-272-7875



Drawing Title:
**FIRST FLOOR
PLAN
PORCH OPTION**

Sheet: CV942
Job: CV942
Drawn: BJL
Scale: 1/4"=1'-0"
Date: 06/10/01

© T-3 GROUP, LTD., 2000. ALL RIGHTS RESERVED - THIS DRAWING IS NOT TO BE REPRODUCED, CHANGED, COPIED OR ASSIGNED TO ANY THIRD PARTY IN ANY FORM OR MANNER WITHOUT FIRST OBTAINING THE EXPRESSED WRITTEN PERMISSION OF T-3 GROUP, LTD. THE CLIENT AGREES TO INDEMNIFY AND HOLD THE ARCHITECT HARMLESS FROM ANY DAMAGES, LIABILITY, OR COST, INCLUDING ATTORNEY'S FEES AND COSTS OF DEFENSE ARISING FROM ANY CHANGES OR ALTERATIONS MADE BY ANYONE OTHER THAN THE ARCHITECT, OR FROM ANY REUSE OF THE DRAWINGS OR DATA WITHOUT THE PRIOR WRITTEN CONSENT OF THE ARCHITECT.

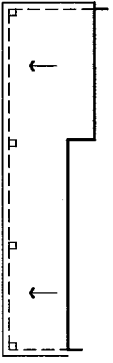


PORCH OPTION B
1/4"=1'-0"

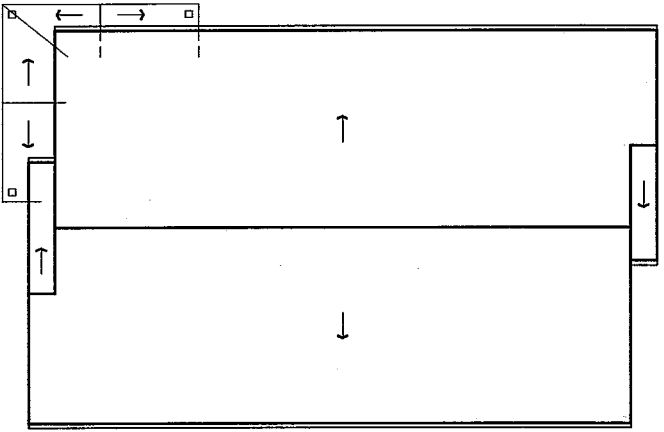
2
Alt

FIRST FLOOR PLAN w/PORCH OPTION A
1/4"=1'-0"

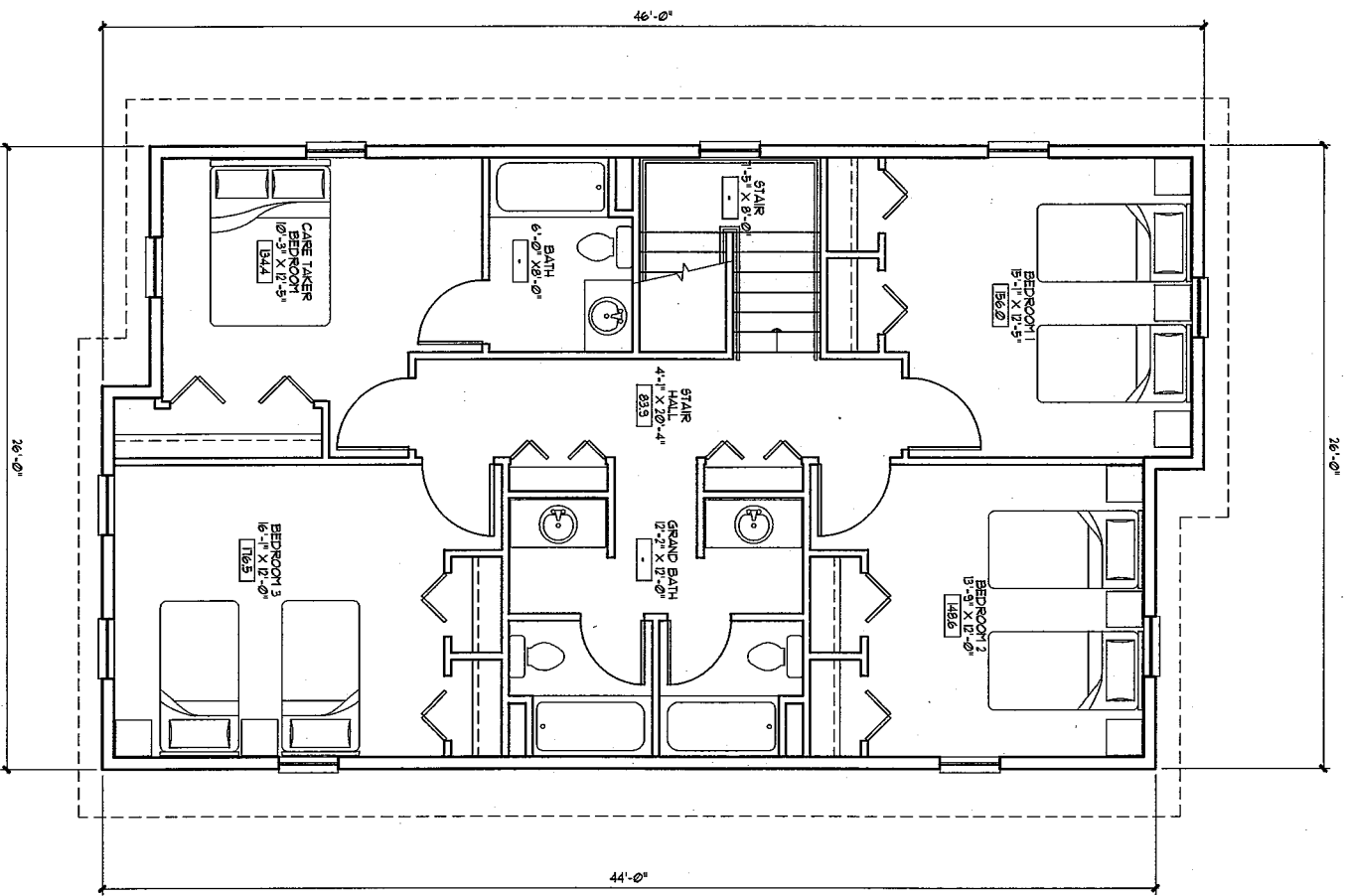
1
Alt



ROOF PLAN PORCH OPTION B
1/8"=1'-0"
A13



ROOF PLAN W/PORCH OPTION A
1/8"=1'-0"
A13



SECOND FLOOR PLAN
1/4"=1'-0"
A13

Revisions:

Project:

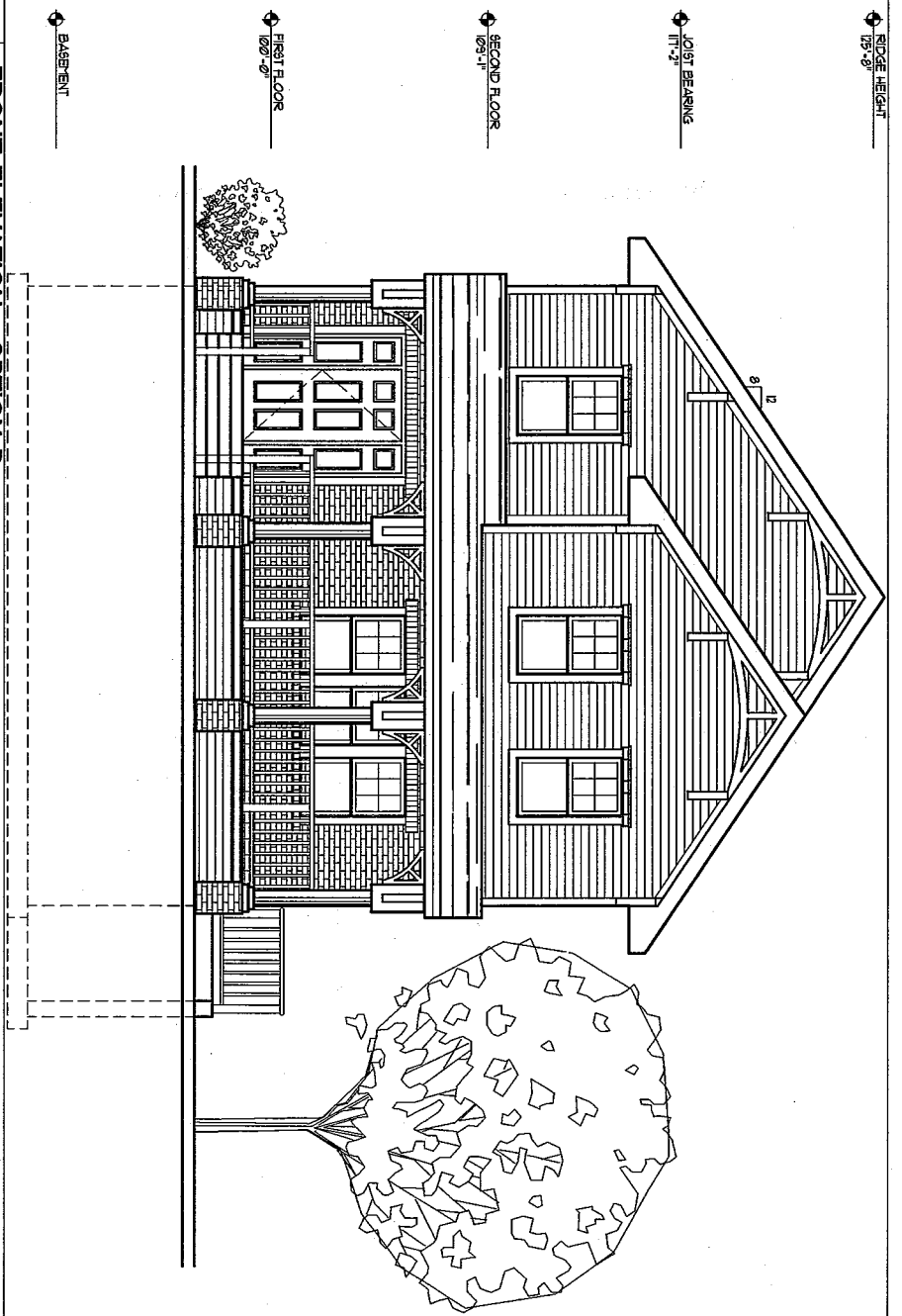
SOS Children's Village
W. Highland Ave. @ N 14th St.
Milwaukee, Wisconsin

T-3 GROUP, LTD.
222 East Erie Street
Milwaukee, Wisconsin 53202
Tel: 414-272-4440 Fax: 414-272-7875

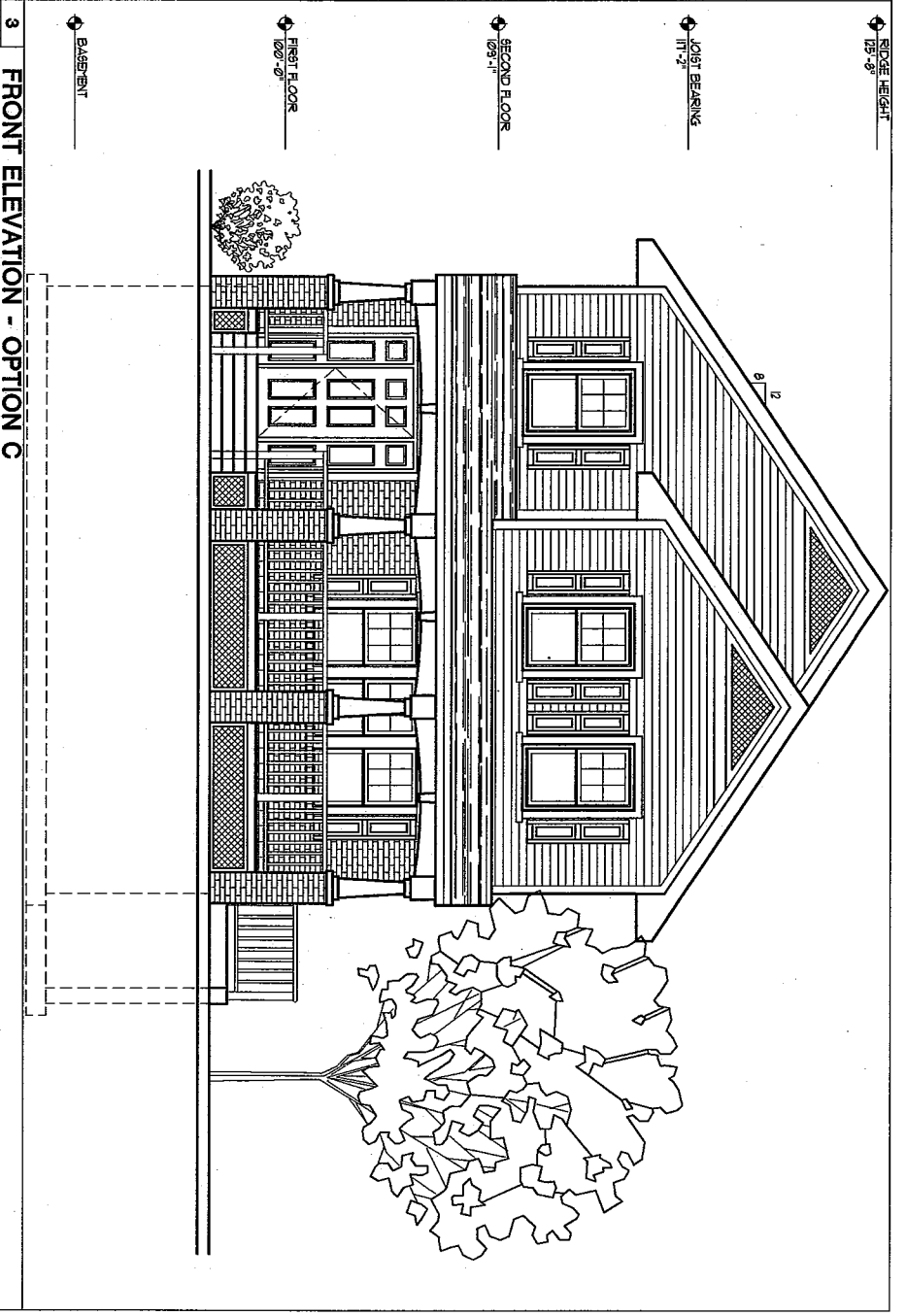
Drawing Title:
SECOND FLOOR PLAN

Date: 06.11.01
Scale: AS NOTED
Drawn: BJK
Job: CV/342
Sheet:

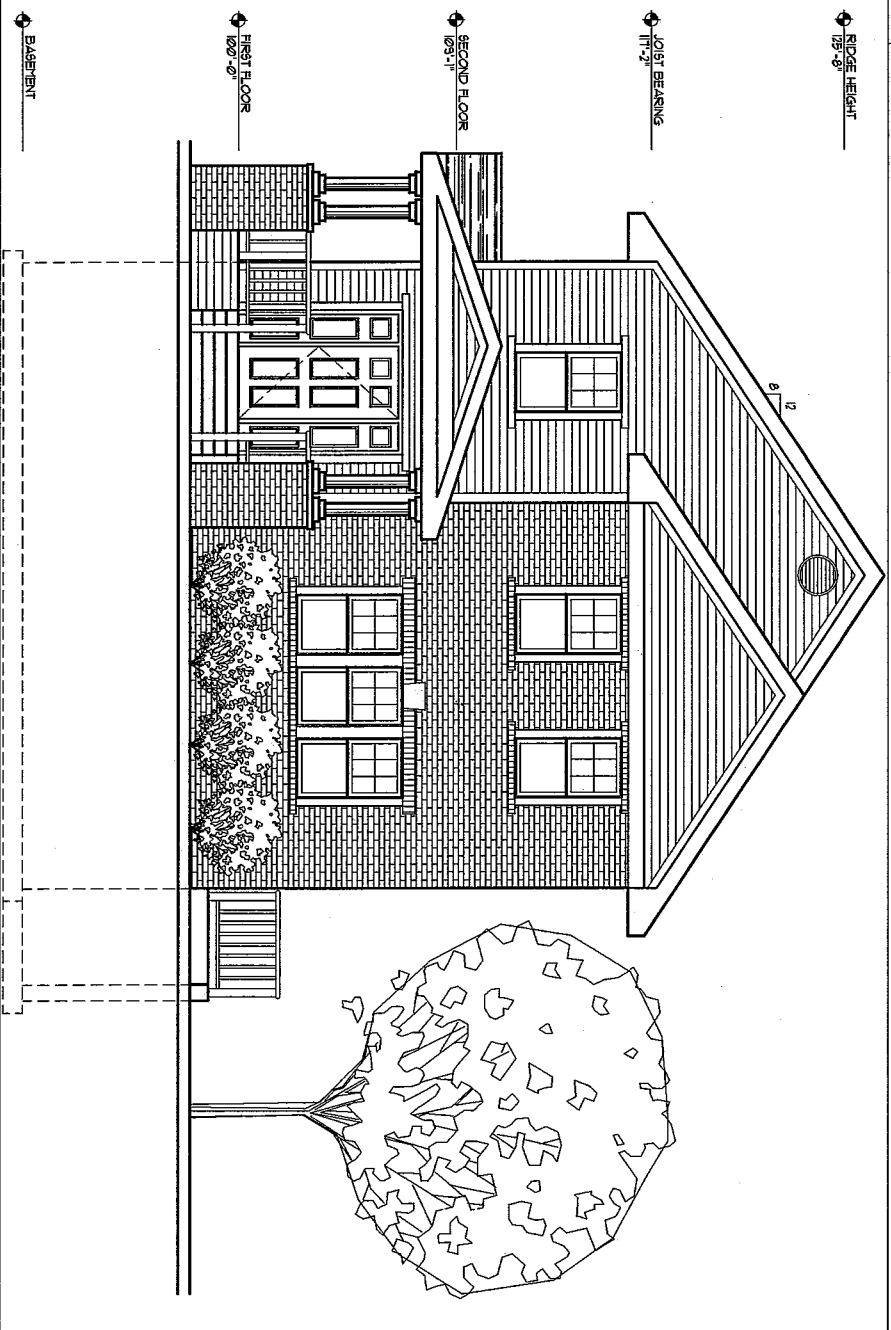
RIGHT T-3 GROUP, LTD. 2000 ALL RIGHTS RESERVED - THIS DRAWING IS NOT TO BE REPRODUCED, CHANGED, COPIED OR ASSIGNED TO ANY THIRD PARTY IN ANY FORM OR MANNER WITHOUT FIRST OBTAINING THE EXPRESSED WRITTEN PERMISSION OF T-3 GROUP, LTD. THE CLIENT AGREES TO INDEMNIFY AND HOLD THE ARCHITECT HARMLESS FROM ANY DAMAGES, LIABILITY, OR COST, INCLUDING ATTORNEY'S FEES AND COSTS OF DEFENSE ARISING FROM ANY CHANGES OR ALTERATIONS MADE BY ANYONE OTHER THAN THE ARCHITECT, OR FROM ANY REUSE OF THE DRAWINGS OR DATA WITHOUT THE PRIOR WRITTEN CONSENT OF THE ARCHITECT.



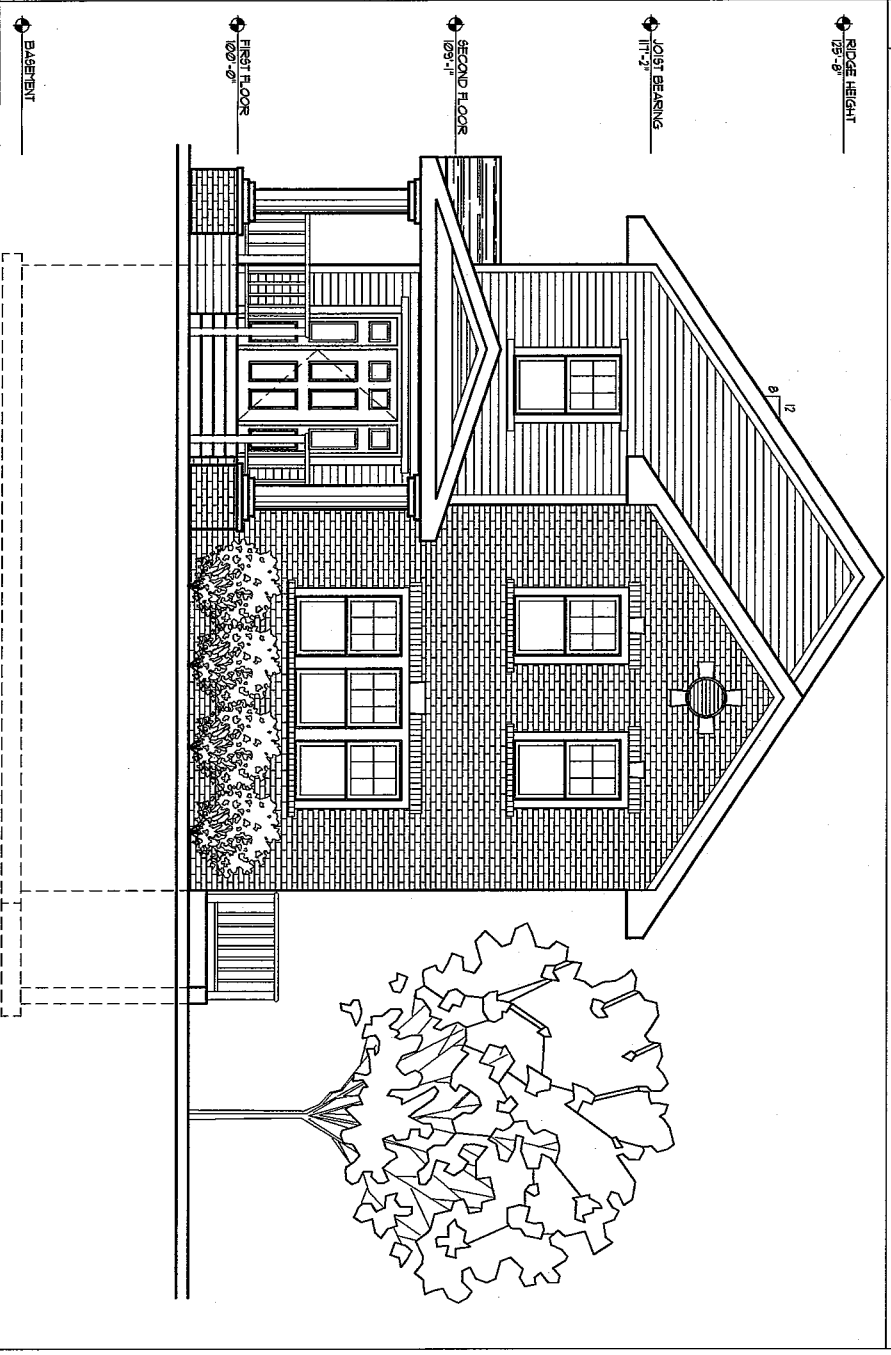
4 FRONT ELEVATION - OPTION D
SCALE 1/4" = 1'-0"



3 FRONT ELEVATION - OPTION C
SCALE 1/4" = 1'-0"




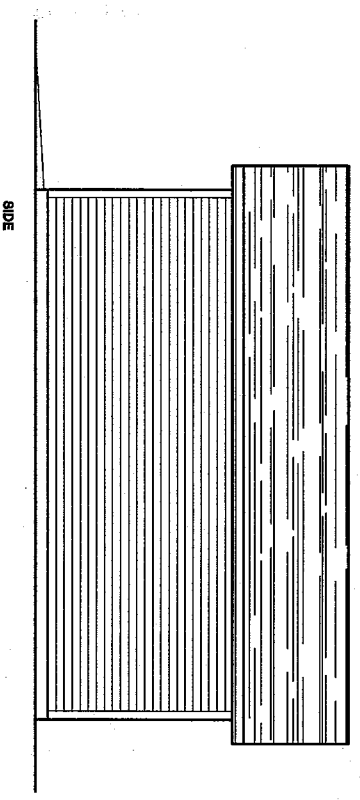
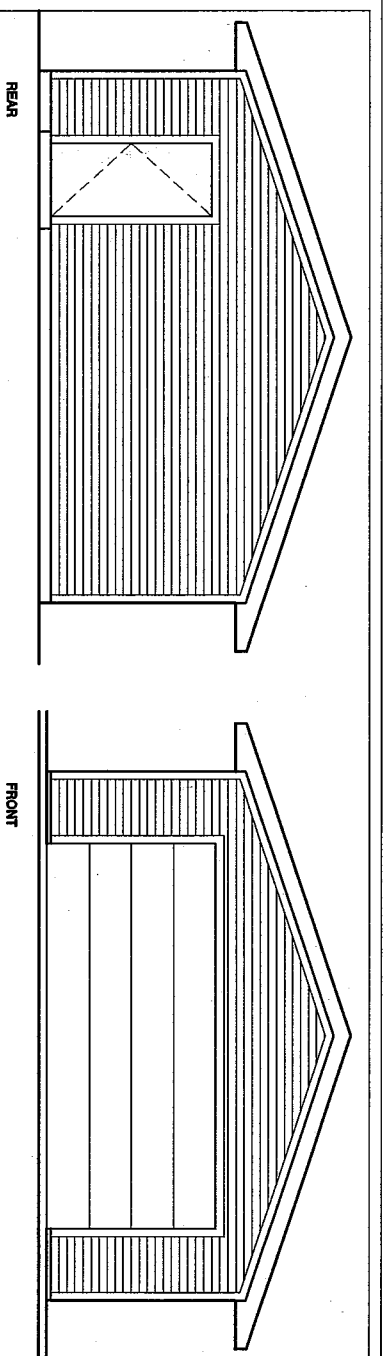
2 FRONT ELEVATION - OPTION B
SCALE 1/4" = 1'-0"



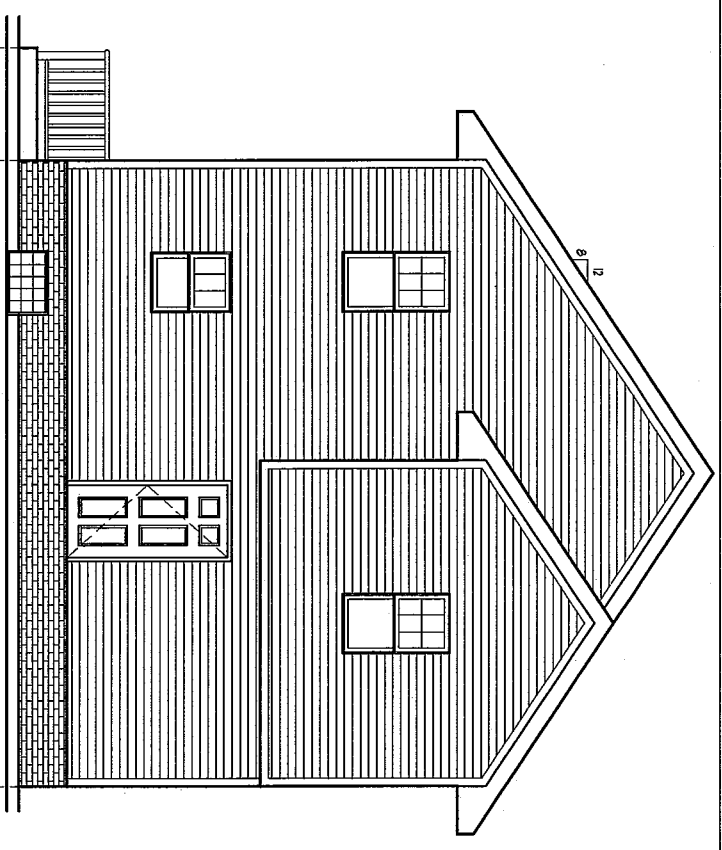
1 FRONT ELEVATION - OPTION A
SCALE 1/4" = 1'-0"

© T-3 GROUP, LTD. 2020 ALL RIGHTS RESERVED - THIS DRAWING IS NOT TO BE REPRODUCED, CHANGED, COPIED OR ASSIGNED TO ANY THIRD PARTY IN ANY FORM OR MANNER WITHOUT FIRST OBTAINING THE EXPRESSED WRITTEN PERMISSION OF T-3 GROUP, LTD. THE CLIENT AGREES TO INDEMNIFY AND HOLD THE ARCHITECT HARMLESS FROM ANY DAMAGES, LIABILITY, OR COST, INCLUDING ATTORNEY'S FEES AND COSTS OF DEFENSE ARISING FROM ANY CHANGES OR ALTERATIONS MADE BY ANYONE OTHER THAN THE ARCHITECT, OR FROM ANY REUSE OF THE DRAWINGS OR DATA WITHOUT THE PRIOR WRITTEN CONSENT OF THE ARCHITECT.

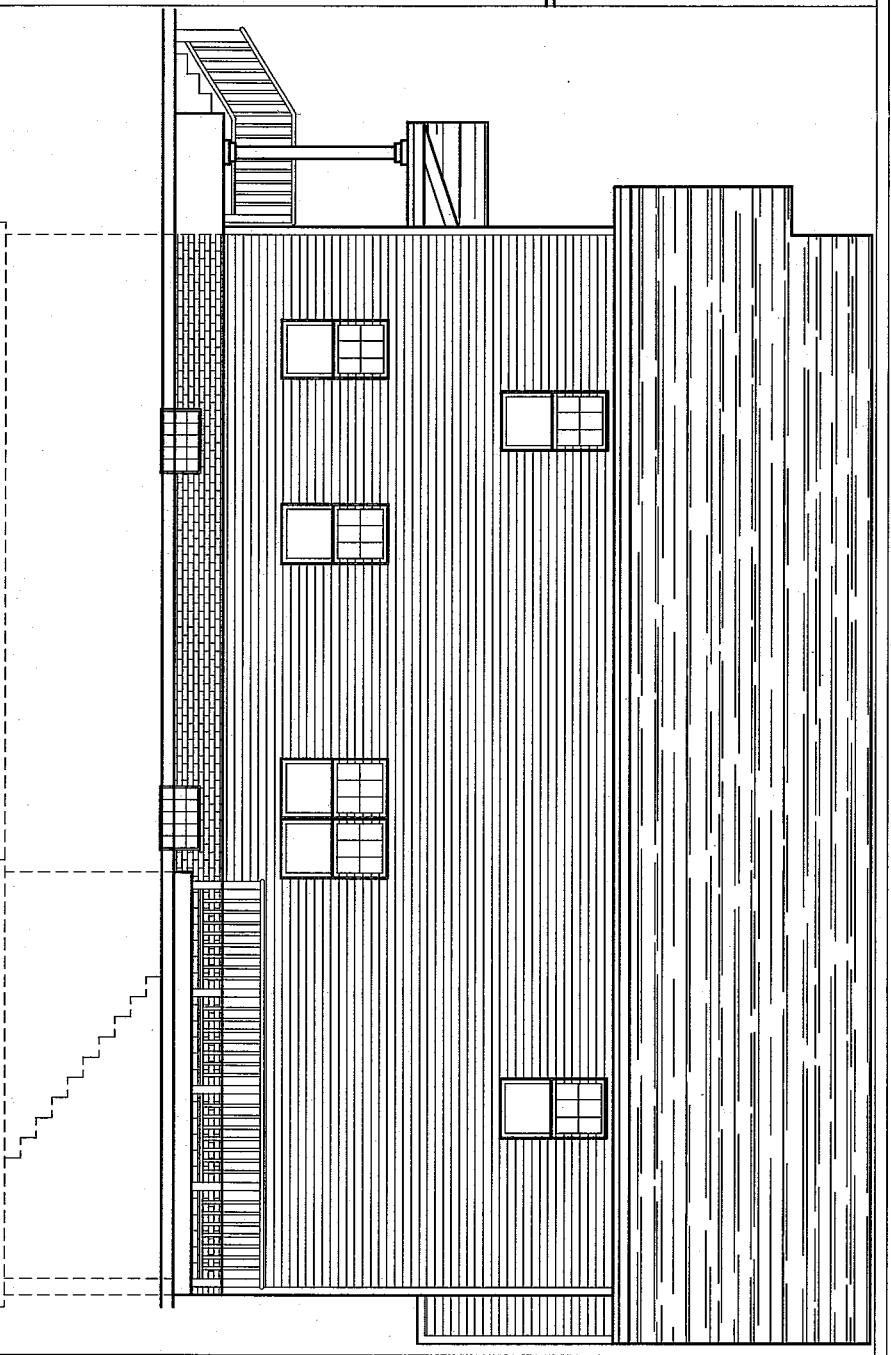
Drawing Title: PROPOSED ELEVATIONS	 T-3 GROUP, LTD. 222 East Erie Street Milwaukee, Wisconsin 53202 Tel: 414-272-4440 Fax: 414-272-7875	Project SOS Children's Village W. Highland Ave. @ N 14th St. Milwaukee, Wisconsin	Revisions:
Date: 06.11.01 Scale: 1/4" = 1'-0" Drawn: BJK Job: CV342 Sheet:			



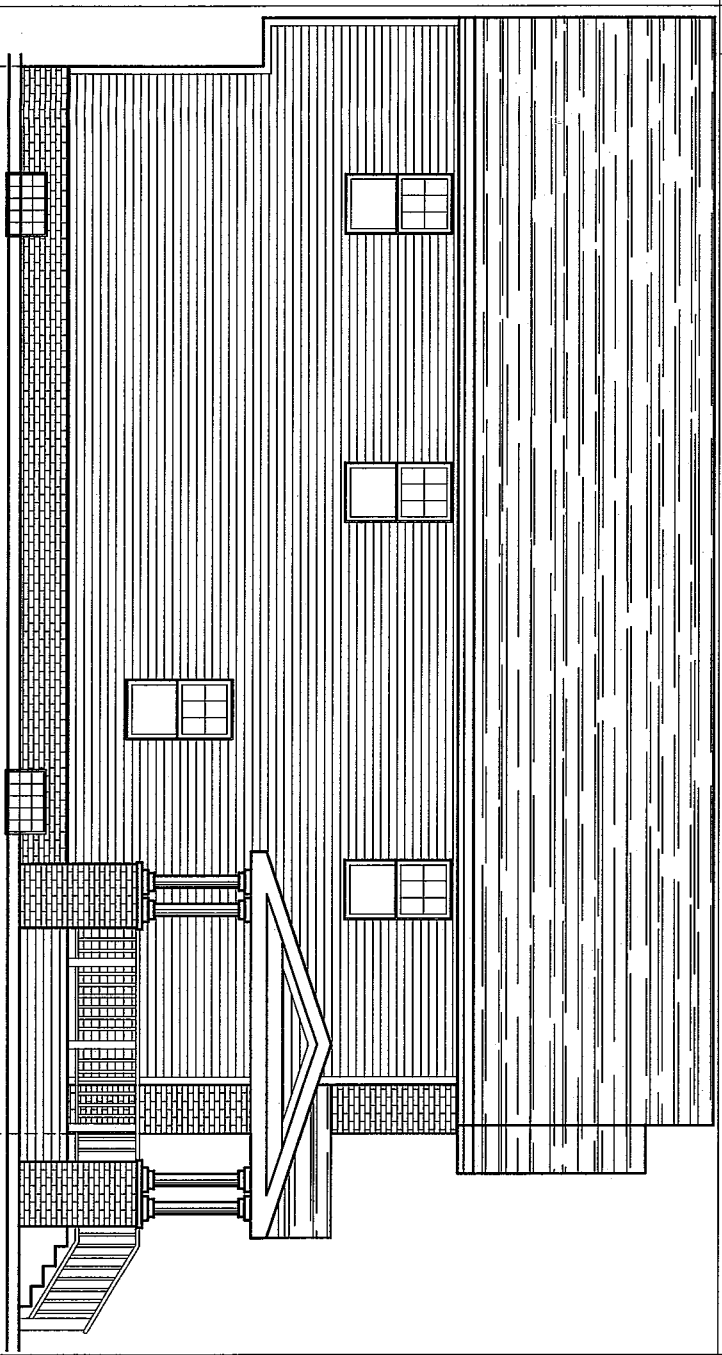
4
A22
TYPICAL GARAGE ELEVATIONS
SCALE 1/4" = 1'-0"



3
A22
REAR ELEVATION
SCALE 1/4" = 1'-0"




2
A22
SIDE ELEVATION
SCALE 1/4" = 1'-0"



1
A22
SIDE ELEVATION
SCALE 1/4" = 1'-0"

RIGHT T-3 GROUP, LTD., 2000. ALL RIGHTS RESERVED - THIS DRAWING IS NOT TO BE REPRODUCED, CHANGED, COPIED OR ASSIGNED TO ANY THIRD PARTY IN ANY FORM OR MANNER WITHOUT FIRST OBTAINING THE EXPRESSED WRITTEN PERMISSION OF T-3 GROUP, LTD. THE CLIENT AGREES TO INDEMNIFY AND HOLD THE ARCHITECT HARMLESS FROM ANY DAMAGES, LIABILITY, OR COST, INCLUDING ATTORNEY'S FEES AND COSTS OF DEFENSE ARISING FROM ANY CHANGES OR ALTERATIONS MADE BY ANYONE OTHER THAN THE ARCHITECT, OR FROM ANY REUSE OF THE DRAWINGS OR DATA WITHOUT THE PRIOR WRITTEN CONSENT OF THE ARCHITECT.

Drawing Title: PROPOSED ELEVATIONS	 T-3 GROUP, LTD. 222 East Erie Street Milwaukee, Wisconsin 53202 Tel: 414-272-4440 Fax: 414-272-7876	SOS Children's Village W. Highland Ave. • N 14th St. Milwaukee, Wisconsin	Project:	Revisions:
Date: 08.11.01 Scale: 1/4" = 1'-0" Drawn: BJL Job: CV342 Sheet:				