



LIVING WITH HISTORY

# Certificate of Appropriateness

Milwaukee Historic Preservation Commission/200 E. Wells Street/Milwaukee, WI 53202/phone 414-286-5712/fax 414-286-3004

<b>Property</b>	<b>1711 S. 9TH ST.</b>	<b>Mitchell Street Historic District</b>
<b>Description of work</b>	Build limestone monument sign at northeast corner of property in front of church. Sign board will be electronic.	
<b>Date issued</b>	8/28/2013	PTS ID <b>88681 monument sign</b>

In accordance with the provisions of Section 320-21 (11) and (12) of the Milwaukee Code of Ordinances, the Milwaukee Historic Preservation Commission has issued a certificate of appropriateness for the work listed above. The work was found to be consistent with preservation guidelines. The following conditions apply to this certificate of appropriateness:

All work will be done according to attached drawings and photos. Stone will be genuine Niagara formation limestone cut in solid blocks to match the rusticated limestone on the church. NOTE: IT IS ABSOLUTELY ESSENTIAL THAT THE SLID STONE BLOCKS BE CUT TO MATCH THE RUSTICATED FINISH OF THE ORIGINAL STONE. THE BLOCKS CAN BE SMALLER IN SIZE THAN THOSE ON THE CHURCH, BUT THE FINISH AND MATERIAL MUST BE DUPLICATED. Mortar joints must be no more than 1/2" in thickness and tooled to the convex form as pictured in this COA. Electronic sign board must not change less than the time required by the city's zoning code. Mortar must be no harder than type O.

All work must be done in a craftsman-like manner, and must be completed within one year of the date this certificate was issued. Staff must approve any changes or additions to this certificate before work begins. Work that is not completed in accordance with this certificate may be subject to correction orders or citations. If you require technical assistance, please contact Paul Jakubovich of the Historic Preservation staff as follows: Phone: (414) 286-5712 Fax: (414) 286-3004 E-mail: [pjakub@milwaukee.gov](mailto:pjakub@milwaukee.gov).

If permits are required, you are responsible for obtaining them from the Milwaukee Development Center. If you have questions about permit requirements, please consult the Development Center's web site, [www.milwaukee.gov/build](http://www.milwaukee.gov/build), or call (414) 286-8210.

---

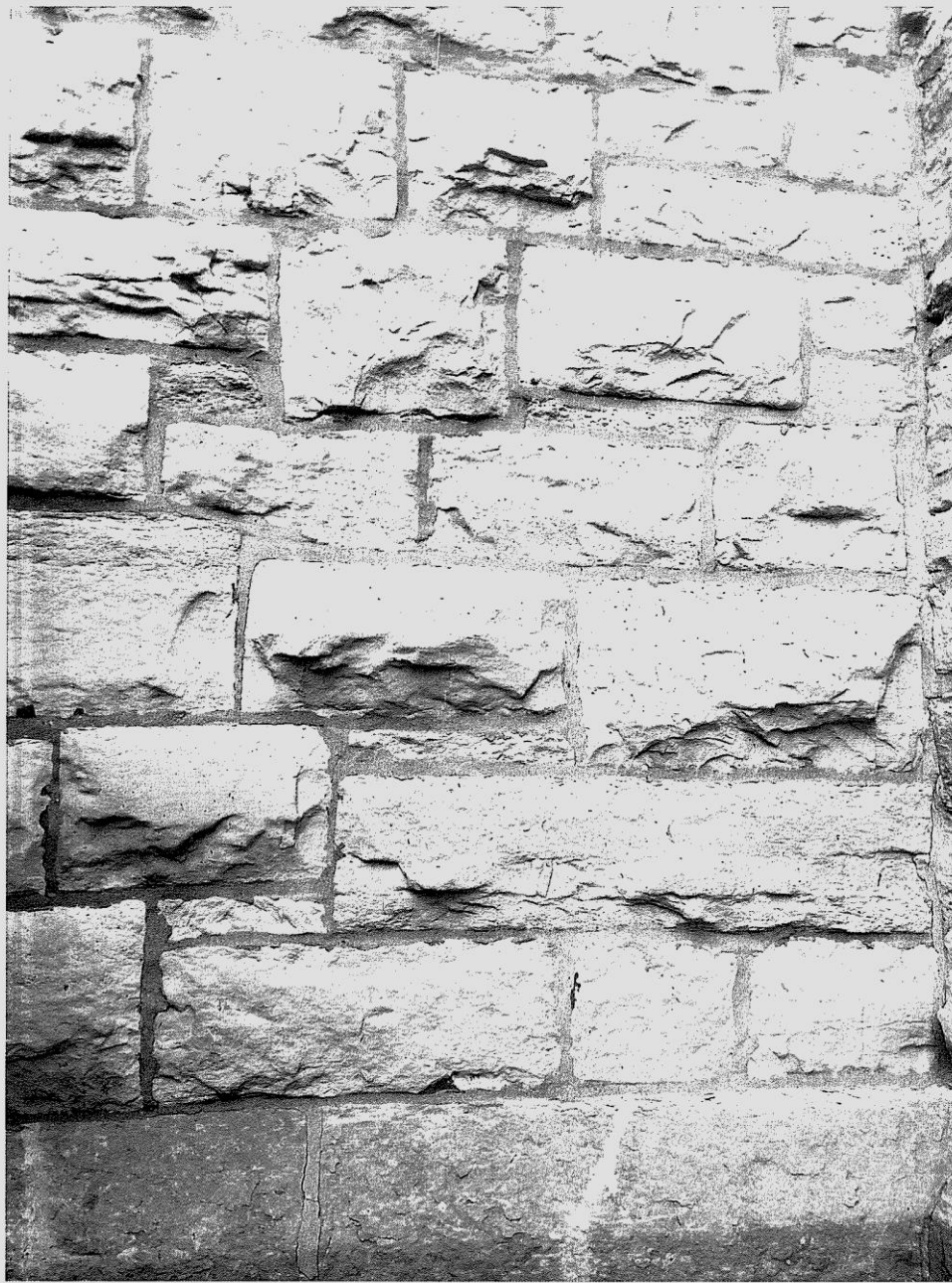
Paul Jakubovich  
City of Milwaukee Historic Preservation

Copies to: Development Center, Ald. Jose Perez, Jorge Vela, Contractor Garin Construction, Inspector Mike Niedermann (286-2560), Inspector Heidi Weed

New sign, made of rusticated limestone piers and base with an led signboard set between the piers, to be located at the northeast corner of the property as shown. Sign will be on church property.



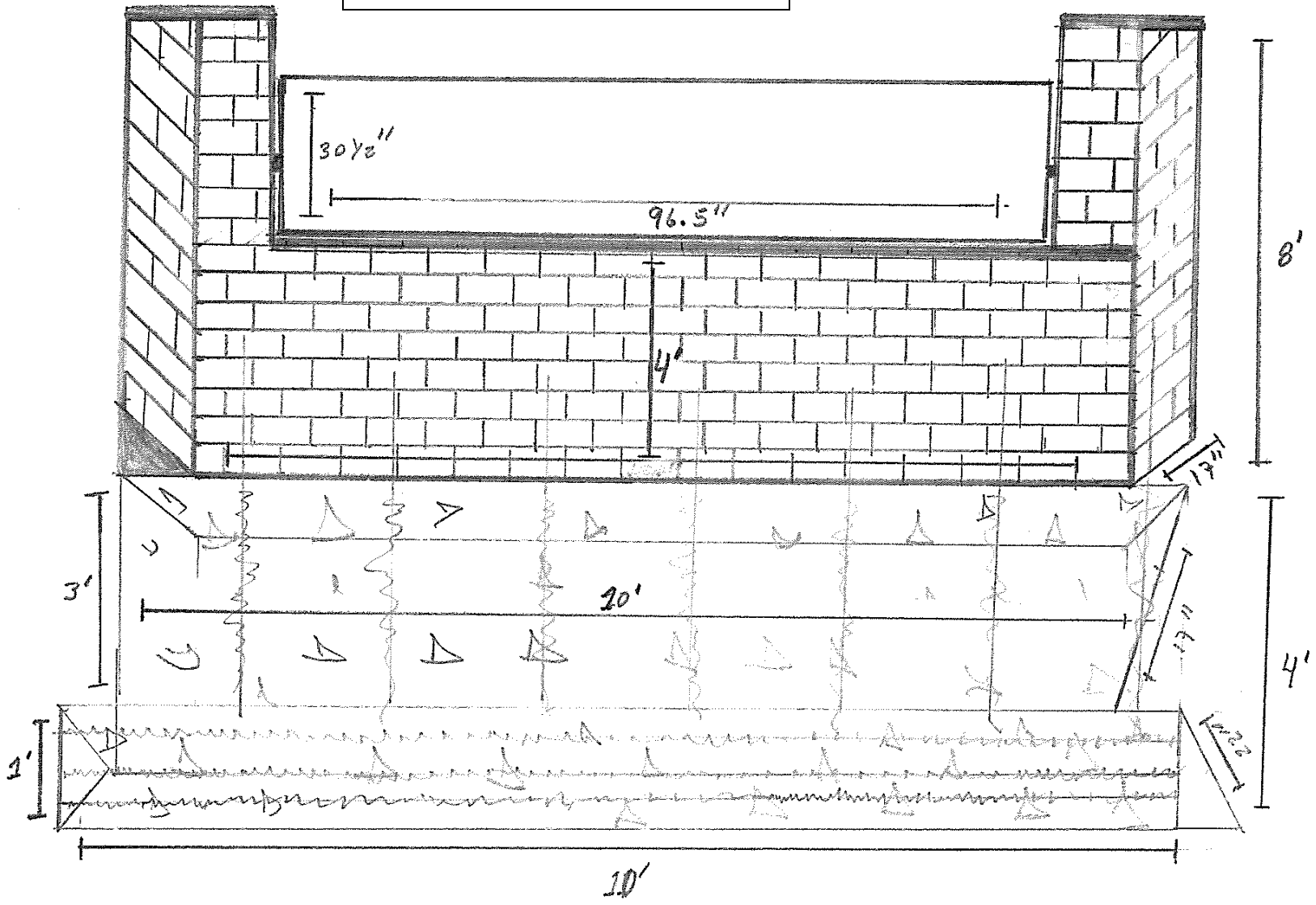
The ST. ANTHONY statue (to the left of the sign in the picture) will be on top of the sign.



**NOTE:** The stone walls were repointing and the mortar joints are not as they would have appeared originally. In constructing the masonry monument sign, the joints should be no wider than  $\frac{1}{2}$ " and finished in a convex design with the proper jointing tool. See attached photos of how the joints should look.

**All stone blocks for sign will be made of Niagara formation limestone, just like the church, pictured here, and finished with rusticated faces to match the original stone. The size of the new stone blocks for the signs can be smaller than the originals on the church.**

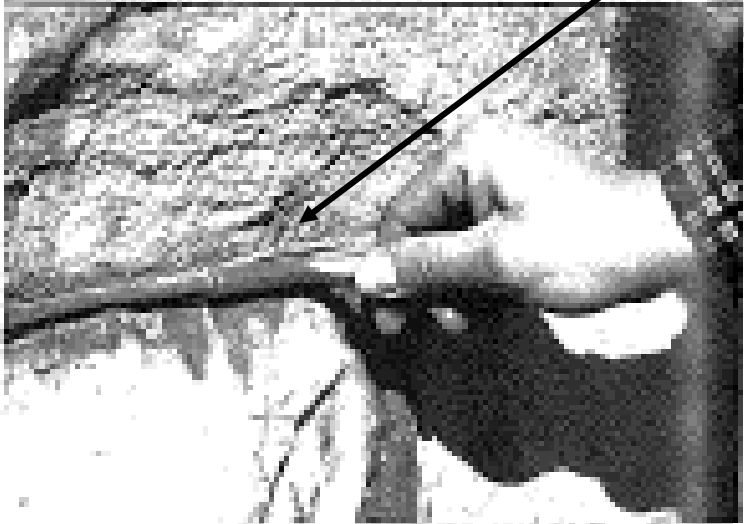
LED signboard



Elevation of new sign



The concave jointer shown in the top photo is used to produce the protruding rope-like mortar joint shown in the bottom photo that was very popular for stone masonry during the late nineteenth and early twentieth centuries.



**Beading tool should be used to finish all masonry joints in the new sign. Note the rope-like final finish and the narrow size, approximately 1/2". Mortar should be no harder than type O.**