

Be Advised: Contracts below the red line have yet to be recorded in the EBE and RPP Reports

Summary of Contracts Closed in 2009

NO	CONTRACTOR	CONTR. NO.	TYPE OF PROJECT	APPRENTICE(S)	DESCRIPTION OF PROJECT	TARGET AREA RESIDENT HOURS	% TARGET RES.	NON-TARGET MWLW RESIDENT HOURS	% NON-TARGET RESIDENT HOURS	TOTAL MWLW RESIDENT HOURS	% MLW RESIDENT HOURS	TOTAL NON-RESIDENT HOURS	% NON-RESIDENT HOURS	GRAND TOTAL HOURS	TOTAL CONTRACT BID AMOUNT	TOTAL LABOR BIDDING PAID	TOTAL AREA DOLLARS PAID	% TARGET AREA DOLLARS PAID	BID AMOUNT				FINAL COST								
																			EBE Required (%)	EBE Performed (% of bid amount)	Performed \$ Amount	EBE Required (%)	EBE Performed (% of final cost)	Performed \$ Amount	NO. OF BIDS	TOTAL CONTRACT BID	ESTIMATED CONTRACT AMOUNT	ACTUAL FINAL COST	AWARD DATE	FINAL RELEASE DATE	
1	C.W. Pupero, Inc	C52300020	SEW	Yes	Sanitary sewer relay and lining	325.25	28.4%	367.5	32.1%	692.75	60.5%	452.25	38.5%	1,145.00	\$18,175.00	\$52,877.42	\$12,180.96	23.0%	22.00%	29.5%	\$50,074.25	22.00%	28.7%	\$66,074.25	6	\$ 186,175.55	\$395,000.00	\$18,675.21	2/28/2009	1/23/2010	
2	Sigma Environmental	C52300023	SEW	No	Sanitary manhole inspections	601.25	25.3%	0.0	0.0%	601.25	25.3%	1,774.50	74.7%	2,375.75	\$11,346.10	\$42,466.57	\$7,215.00	17.0%	10.00%	12.34%	\$11,369.30	10.00%	12.66%	\$13,699.70	5	\$ 113,461.00	\$231,000.00	\$11,550.00	3/3/2009	11/17/2009	
3	J.P. Cook Co	C45400006	BF	No	Planning and layout installation	564.25	30.2%	65.5	3.5%	629.75	33.7%	1,237.50	66.3%	1,867.25	\$342,636.00	\$31,783.00	\$3,926.40	31.9%	18.00%	28.94%	\$39,140.00	18.00%	28.75%	\$39,140.00	3	\$ 342,636.00	\$350,000.00	\$34,933.00	1/16/2009	3/26/2009	
4	American Sewer Services	C52300001	SEW	Yes	Combined sewer relay	798.00	38.7%	203.8	10.3%	901.75	47.0%	1,051.25	53.0%	1,853.00	\$36,395.00	\$19,106.20	\$7,793.60	38.0%	24.00%	38.70%	\$27,039.52	24.00%	39.01%	\$36,198.42	7	\$ 363,395.00	\$429,000.00	\$36,987.96	1/11/2009	2/17/2009	
5	Frank Aschbach	C52300006	PAV	Yes	Asphalt surfacing	66.25	30.2%	11.3	5.1%	77.50	35.3%	141.75	64.7%	219.25	\$98,212.97	\$10,833.38	\$3,272.00	20.1%	20.00%	22.52%	\$27,114.54	20.00%	22.52%	\$27,114.54	2	\$ 96,212.97	\$120,327.12	\$38,212.97	1/14/2009	2/3/2009	
6	Flannan Contractors	C52300002	SEW	Yes	Water main relay	639.50	48.6%	48.6	2.0%	688.10	48.4%	1,726.50	71.0%	2,422.00	\$412,960.00	\$10,056.00	\$3,626.00	33.5%	15.00%	47.80%	\$41,817.00	15.00%	47.77%	\$40,660.25	2	\$ 412,960.00	\$699,000.00	\$41,817.00	1/12/2009	3/27/2009	
7	Mered Mechanical	C64100003	WAT	Yes	Boiler replacement	136.00	65.2%	54.0	25.9%	190.00	81.1%	18.50	8.9%	208.50	\$17,330.00	\$4,669.14	\$1,542.60	36.9%	20.00%	31.60%	\$3,601.97	18.00%	43.33%	\$49,619.97	3	\$ 17,330.00	\$60,000.00	\$11,537.60	2/14/2009	3/2/2009	
8	United Sewer and Water	C52300025	SEW	Yes	Combined sewer relay and lining	812.50	26.0%	39.5	1.1%	852.00	27.2%	2,552.25	72.8%	3,504.25	\$58,793.00	\$145,798.27	\$34,003.20	23.4%	20.00%	20.39%	\$111,871.42	20.00%	20.82%	\$119,674.45	8	\$ 58,793.00	\$86,000.00	\$57,479.98	3/7/2009	3/4/2009	
9	American Sewer Services	C52300055	SEW	Yes	Water main relay	1,032.75	31.2%	189.0	6.5%	1,221.75	2,078.75	3,950.50	\$76,330.00	\$1,608.31	\$42,848.91	30.8%	24.00%	31.68%	\$2,603.07	24.00%	30.90%	\$2,603.07	24.00%	30.90%	\$26,030.00	3	\$ 76,330.00	\$61,000.00	\$7,387.65	6/23/2009	1/29/2010
10	Rawson Contractors	C52300044	SEW	Yes	Water relay and lining	1,229.00	28.8%	57.3	1.3%	1,286.30	41.9%	2,498.25	68.1%	4,300.50	\$487,891.00	\$18,542.83	\$47,934.10	26.4%	16.00%	34.72%	\$18,402.58	16.00%	36.75%	\$18,402.58	4	\$ 487,891.00	\$810,000.00	\$47,792.56	4/14/2009	5/4/2009	
11	American Sewer Services	C52300074	SEW	Yes	Combined sewer relay	891.75	32.0%	90.5	4.4%	982.25	38.6%	1,315.25	63.6%	2,047.50	\$422,310.00	\$24,183.68	\$27,284.27	32.2%	17.00%	17.23%	\$26,636.08	17.00%	18.83%	\$39,694.66	4	\$ 422,310.00	\$455,000.00	\$45,303.67	6/20/2009	4/4/2010	
12	Underground Pipeline	C64100083	WAT	Yes	Water main relay	1,026.00	34.6%	188.5	6.5%	1,214.50	41.9%	1,688.75	58.1%	2,901.25	\$ 377,560.00	\$ 18,342.79	\$ 48,424.01	18.00%	16.00%	18.88%	\$19,260.81	16.00%	17.74%	\$17,261.81	2	\$ 377,560.00	\$484,500.00	\$40,835.60	6/10/2009	5/24/2009	
13	United Sewer and Water	C64100084	WAT	Yes	Water main relay	444.75	27.2%	11.5	0.7%	456.25	27.9%	1,178.50	72.1%	1,634.75	\$ 289,954.00	\$ 69,848.42	\$ 18,777.19	23.7%	18.00%	15.67%	\$42,174.94	18.00%	15.59%	\$42,174.94	3	\$ 289,954.00	\$355,000.00	\$70,438.98	6/18/2009	2/27/2010	
14	Underground Pipeline	C52300067	SEW	Yes	Combined sewer relay and lining	153.25	38.9%	48.5	12.5%	191.75	49.6%	195.50	50.6%	389.25	\$ 79,659.50	\$ 1,270.42	\$ 6,669.89	33.0%	22.00%	24.40%	\$19,260.81	22.00%	22.61%	\$19,260.81	4	\$ 79,659.50	\$94,000.00	\$22,456.50	7/10/2009	4/22/2010	
15	Rawson Contractors, Inc	C52300073	SEW	Yes	Sewer relay	698.75	30.8%	54.5	2.4%	753.25	33.2%	1,515.00	69.8%	2,288.75	\$ 408,957.00	\$ 9,895.27	\$ 26,355.71	24.8%	22.00%	17.99%	\$27,361.81	22.00%	18.41%	\$27,361.81	4	\$ 408,957.00	\$282,000.00	\$35,730.15	7/30/2009	2/31/2010	
16	M.J. Construction, Inc	C52300101	SEW	Yes	Combined sewer relay	446.00	26.9%	362.5	21.3%	808.50	47.0%	893.50	52.4%	1,704.00	\$ 286,800.00	\$ 70,838.53	\$ 1,534.59	24.8%	18.00%	24.76%	\$71,487.45	18.00%	21.84%	\$71,487.45	5	\$ 286,800.00	\$219,000.00	\$27,302.09	9/29/2009	2/22/2010	
17	Underground Pipeline Construction	C64100127	WAT	Yes	Combined sewer relay and lining	259.50	28.1%	85.0	7.0%	344.50	35.2%	598.25	64.9%	922.75	\$ 119,400.00	\$ 30,405.65	\$ 10,691.10	28.1%	15.00%	27.88%	\$33,456.90	15.00%	27.84%	\$33,456.90	4	\$ 119,400.00	\$159,000.00	\$20,874.10	12/11/2009	2/22/2010	
18	American Sewer Services	C52300025	SEW	Yes	Sanitary storm sewer lining and relay	1,097.75	28.9%	471.0	12.8%	1,568.75	42.7%	2,104.75	57.3%	3,673.50	\$ 816,778.00	\$ 148,934.11	\$ 45,542.67	30.8%	10.00%	12.07%	\$39,620.49	10.00%	11.53%	\$39,620.49	5	\$ 816,778.00	\$ 876,000.00	\$ 85,501.57	3/19/2009	3/27/2009	
19	Underground Pipeline Construction	C64100127	WAT	Yes	Water main relay	342.50	28.9%	139.4	4.8%	481.90	33.2%	702.52	66.9%	1,095.75	\$ 465,838.00	\$ 112,124.41	\$ 115,156.20	24.9%	20.00%	20.3%	\$115,156.20	20.00%	20.00%	\$115,156.20	3	\$ 465,838.00	\$ 577,000.00	\$ 46,236.96	10/26/2009	3/27/2010	
20	American Sewer Services	C52300025	SEW	Yes	Sanitary storm sewer lining and relay	1,549.00	14.6%	302.3	28.6%	1,851.30	43.2%	2,077.50	68.9%	1,057.25	\$ 159,738.00	\$ 4,976.36	\$ 6,356.50	14.8%	18.00%	33.33%	\$7,319.25	18.00%	14.8%	\$7,319.25	3	\$ 159,738.00	\$479,000.00	\$20,611.00	3/26/2009	7/27/2009	
21	J.P. Culbert & Sons	C45400709	BAF	Yes	Landscaping and playground install	62.93	38.0%	52.1	28.9%	115.03	63.9%	66.00	36.1%	181.00	\$ 31,835.51	\$ 3,989.62	\$ 1,112.26	27.9%	18.00%	67.02%	\$27,327.25	18.00%	66.50%	\$27,327.25	2	\$ 31,835.51	\$ 29,000.00	\$ 32,086.65	11/6/2007	5/27/2009	
22	Underground Pipeline Construction	C64100126	WAT	Yes	Storm sewer and pump station	308.75	27.0%	209.5	18.3%	518.25	45.3%	624.75	64.7%	1,143.00	\$ 452,245.00	\$ 47,960.11	\$ 10,542.48	22.0%	5.00%	6.07%	\$10,643.44	5.00%	6.59%	\$10,643.44	3	\$ 452,245.00	\$ 764,000.00	\$ 48,169.70	9/29/2009	5/4/2010	
23	Rawson Contractors, Inc	C52300066	SEW	Yes	Combined sewer relay	2,003.25	27.3%	616.0	8.0%	2,619.25	36.4%	4,865.25	64.6%	7,564.50	\$ 848,204.00	\$ 312,897.87	\$ 78,507.12	25.1%	28.00%	44.40%	\$370,817.84	28.00%	43.84%	\$370,817.84	5	\$ 848,204.00	\$1,193,000.00	\$ 89,054.53	8/24/2007	5/1/2010	
24	Instronm Technologies	C523000123	SEW	No	Storm sewer lining	0.00	0.0%	8.0	0.9%	8.00	0.9%	895.00	99.1%	701.00	\$ 212,500.00	\$ 29,847.22	\$ 0.00	0.0%	10.00%	8.86%	\$19,549.00	10.00%	8.86%	\$19,549.00	4	\$ 212,500.00	\$ 719,000.00	\$ 21,520.00	1/29/2009	3/13/2009	
25	Underground Pipeline Construction	C64100116	WAT	Yes	Substituted water pump and valve replacements	182.00	20.5%	147.0	16.7%	329.00	37.2%	522.00	62.0%	873.00	\$ 380,000.00	\$ 17,452.94	\$ 5,189.28	52.2%	10.00%	3.67%	\$5,403.00	10.00%	3.05%	\$5,403.00	4	\$ 380,000.00	\$ 335,000.00	\$ 69,277.00	11/21/2009	8/4/2010	
26	Solvey's Home Improvements	C58100031	Forestry	No	Removal of weeds and tall grasses	4,053.00	30.9%	793.0	60.6%	11,866.00	91.5%	1,112.00	8.5%	13,098.00	\$ 0.00	\$ 14,675.80	\$ 45,690.60	50.0%	50.00%	100.0%	NA	50.00%	NA	NA	NA	NA	4/21/2009	NA			
27	United Sewer and Water	C52300027	PAV	No	Concrete overlay	1,697.25	44.7%	78.0	1.5%	1,775.25	60.2%	1,484.50	38.9%	3,741.50	\$ 289,153.10	\$ 14,773.13	\$ 6,900.62	37.1%	10.00%	21.2%	\$59,019.07	20.00%	18.84%	\$59,019.07	3	\$ 289,153.10	\$ 324,573.67	\$ 38,935.82	4/11/2009	5/8/2009	
28	Amesek Construction, Inc	C54500101	BAF	Yes	Basement air handler replacement	342.50	49.7%	17.0	2.0%	359.50	49.7%	491.50	57.9%	841.00	\$ 70,000.00	\$ 47,316.81	\$ 22,692.99	46.6%	18.00%	27.88%	\$27,619.00	18.00%	27.88%	\$27,619.00	3	\$ 70,000.00	\$106,000.00	\$26,926.00	9/13/2009	4/29/2010	
29	Advanced Enterprises	C52300064	SEW	Yes	Sewer relay and lining	422.75	28.6%	295.3	20.0%	718.00	48.0%	758.75	51.4%	1,476.75	\$ 261,728.00	\$ 64,447.38	\$ 17,865.15	27.9%	16.00%	54.42%	\$43,526.00	16.00%	56.63%	\$43,526.00	3	\$ 261,728.00	\$365,000.00	\$29,443.90	7/6/2007	1/15/2009	
30	United Sewer and Water	C52300100	SEW	Yes	Combined sewer relay	422.75	26.8%	206.3	14.8%	629.00	38.0%	894.75	60.4%	1,578.75	\$ 377,053.50	\$ 69,213.23	\$ 16,648.48	28.9%	6.00%	10.69%	\$34,948.68	6.00%	10.76%	\$34,948.68	3	\$ 377,053.50	\$959,000.00	\$34,948.68	2/16/2009	1/15/2010	
31	D.P. Tomasi Contractors, Inc	C52300102	SEW	Yes	Storm water treatment structures	748.00	30.4%	1,601.0	61.2%	2,349.00	61.6%	2,847.00	61.6%	4,694.00	\$ 814,938.00	\$ 108,365.51	\$ 27,388.34	28.2%	14.00%	11.44%	\$39,365.26	14.00%	11.24%	\$39,365.26	3	\$ 814,938.00	\$758,000.00	\$62,921.00	9/13/2009	1/15/2010	
32	Visa-Sewer Clean and Seal	C52300011	SEW</																												

Exhibit D: Summary of Target Hours

RESIDENT PREFERENCE PROGRAM SUMMARY STATISTICS		
	Total	Average per contract
Target Area Resident Hours	34,085.53	655.49
% Target Resident Hours	29.9%	
Non-Target, Milw Resident Hours	20,634.50	396.8
% Non-Target, Milw Resident Hours	14.8%	
Total Milw Resident Hours	54,720.03	1,052.31
% Milw Resident Hours	44.7%	
Total Non-Resident Hours	58,013.43	1,115.64
% Non-Resident Hours	55.3%	
Grand Total Hours	112,733.46	2,167.95
	100%	
Total Contract Bid Amount	\$ 18,426,642.73	\$ 361,306.72
Total Labor Dollars Paid	\$ 4,324,807.29	\$ 83,169.37
Target Area Dollars Paid	\$ 1,321,964.61	\$ 25,422.40
% Paid to Target Area Resident	29.2%	

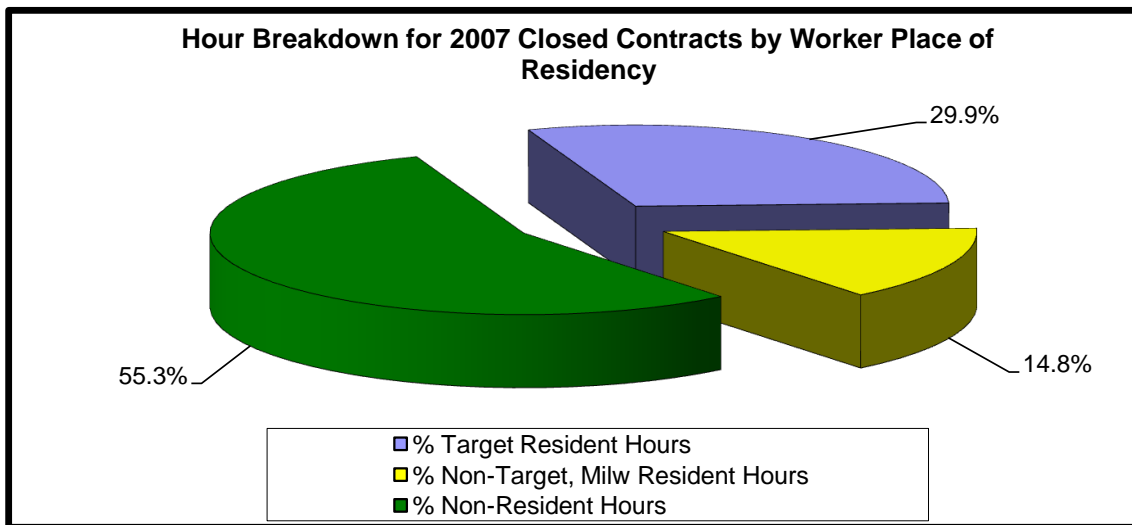


Exhibit D: Summary of Target Hours



Exhibit A: Emerging Business Enterprise Statistics

Emerging Business Enterprise				BID AMOUNT			FINAL COST			NO. OF BIDS	TOTAL CONTRACT BID AMOUNT	ESTIMATED CONTRACT AMOUNT	ACTUAL FINAL COST	AWARD DATE	CLOSING DATE
CONTRACTOR	CONTR. NO.	TYPE OF PROJECT	DESCRIPTION OF PROJECT	EBE Required (%)	EBE Performed (%) of bid amount	Performed \$ Amount	EBE Required (%)	EBE Performed (%) of final cost	Performed \$ Amount						
J.P. Cullen & Sons	C545070028	B&F	Restroom renovations ...etc.	18.00%	33.19%	\$63,964.00	18.00%	30.51%	\$63,964.00	3	\$192,738.00	\$476,300.00	\$209,617.00	3/26/2007	5/7/2009
United Landscape & Snow F	C545070119	B&F	Landscaping and playground install	18.00%	67.02%	\$21,337.25	18.00%	66.50%	\$21,337.25	2	\$31,835.51	\$29,900.00	\$32,086.65	11/6/2007	5/7/2009
Arteaga Construction, Inc.	C545070101	B&F	Basement air handler replacement	18.00%	64.40%	\$47,015.00	18.00%	66.94%	\$47,015.00	4	\$73,000.00	\$160,000.00	\$70,230.00	9/13/2007	1/2/2009
Wm. Sackerson Constructio	C545080118	B&F	City hall toilet alterations	18.00%	29.66%	\$10,793.60	18.00%	29.66%	\$10,793.60	1	\$36,386.00	\$43,922.00	\$36,386.00	9/29/2008	10/5/2009
M.M Schranz Roofing	C545080116	B&F	Roofing engine house #12	18.00%	19.67%	\$44,383.20	18.00%	19.24%	\$44,383.20	1	\$225,675.00	\$157,000.00	\$230,675.00	9/15/2008	10/6/2009
Grunau Company	C545080091	B&F	Chiller and air handler installation	18.00%	22.06%	\$34,150.00	18.00%	21.55%	\$34,150.00	5	\$154,780.00	\$110,000.00	\$158,436.00	7/15/2008	7/15/2009
Doral Corp	C545080115	B&F	Remodeling mechanical revisions	18.00%	3.60%	\$2,643.77	18.00%	3.60%	\$2,643.77	3	\$73,438.00	\$90,000.00	\$73,438.00	9/12/2008	10/1/2009
Doral Corp	C545080030	B&F	Water heater and heat exchange upgrade	18.00%	10.53%	\$15,248.32	18.00%	9.13%	\$15,248.32	4	\$144,796.00	\$130,000.00	\$167,035.00	3/25/2008	9/25/2009
Mared Mechanical	C545060077	B&F	Systems upgrade project	20.00%	21.51%	\$606,894.71	20.00%	21.51%	\$606,894.71	2	\$2,820,900.00	\$3,800,000.00	\$2,820,900.00	8/9/2006	8/5/2009
Soma Home Improvement	C545080080	B&F	Landscaping and snow removal	25.00%	199.61%	\$49,105.00	25.00%	100.00%	\$49,105.00	3	\$24,600.00	\$200,000.00	\$49,105.00	7/8/2008	9/23/2009
H. Kubenik Mechanical	C545070117	B&F	Mechanical revisions and 6th floor remodel	18.00%	29.12%	\$55,144.50	18.00%	23.91%	\$55,144.50	4	\$189,400.00	\$250,000.00	\$230,593.00	11/2/2007	8/4/2009
Wm. Sackerson Constructio	C545080040	B&F	City Hall elevator construction work	18.00%	19.18%	\$70,156.92	18.00%	17.46%	\$70,156.92	2	\$365,860.00	\$375,000.00	\$401,914.00	4/9/2008	8/5/2009
Wm. Sackerson Constructio	C545080128	B&F	Restroom renovations ... etc.	18.00%	20.70%	\$25,576.50	18.00%	20.87%	\$25,576.50	2	\$123,540.00	\$217,000.00	\$122,540.00	10/17/2008	10/9/2009
Munson Inc	C545090044	B&F	Reconstruction at cooper play field	18.00%	65.26%	\$14,424.00	18.00%	65.26%	\$14,424.00	2	\$22,103.80	\$31,300.00	\$22,103.50	4/22/2009	9/1/2009
J.F. Cook Co.	C545080006	BF	Painting and skylight installation	18.00%	28.94%	\$99,149.00	18.00%	28.75%	\$99,149.00	3	\$342,636.00	\$350,000.00	\$344,913.00	1/16/2008	3/26/2009
Mared Mechanical	C545080013	BF	Boiler replacement	18.00%	40.90%	\$49,613.97	18.00%	43.32%	\$49,613.97	2	\$121,300.00	\$60,000.00	\$114,537.00	2/14/2008	NA
			B&F Total			\$1,209,599.74			\$1,209,599.74		\$4,942,988.31	\$6,480,422.00	\$5,084,509.15		
			B&F Average	18.56%	42.21%	\$75,599.98	18.56%	35.51%	\$75,599.98		\$308,936.77	\$405,026.38	\$317,781.82		
Masonry Restoration	C514080119	Operations	Parking structure façade repairs	5.00%	13.15%	\$12,373.00	5.00%	13.15%	\$12,373.00	3	\$94,101.00	\$135,425.00	\$94,101.15	10/3/2008	9/30/2009
Spivey's Home Improvement	C581050031	Operations	Removal of weeds and tall grasses	50.00%	100.00%	NA	50.00%	NA	NA	3	NA	NA	NA	4/21/2005	NA
			Operations Total			\$12,373.00			\$12,373.00		\$94,101.00	\$135,425.00	\$94,101.15		
			Operations Average	27.50%	56.58%	\$12,373.00	27.50%	13.15%	\$12,373.00		\$94,101.00	\$135,425.00	\$94,101.15		
Stark Asphalt	C523080005	PAV	Asphalt surfacing	20.00%	22.52%	\$22,113.54	20.00%	22.52%	\$22,113.54	2	\$98,212.97	\$126,327.12	\$98,212.97	1/14/2008	2/3/2009
Snorek Construction	C523050027	PAV	Concrete paving	20.00%	21.72%	\$62,801.07	20.00%	18.64%	\$62,801.07	3	\$289,193.10	\$324,573.67	\$336,935.82	4/11/2005	5/6/2009
Arrow-Crete Construction	C523070091	PAV	Concrete curb, pavement, sidewalk... etc.	18.00%	72.41%	\$60,553.48	18.00%	70.72%	\$60,553.48	5	\$83,600.88	\$84,106.20	\$85,594.81	8/21/2007	6/23/2009
Snorek Construction	C523080057	PAV	Construction of asphalt pavement .. Etc.	18.00%	18.57%	\$27,891.83	18.00%	18.57%	\$27,891.83	3	\$150,203.15	\$173,000.00	\$150,203.15	5/9/2008	10/13/2009
Snorek Construction	C523080050	PAV	Concrete paving	18.00%	20.49%	\$27,630.22	18.00%	19.64%	\$27,630.22	8	\$134,848.13	\$157,017.26	\$140,654.19	4/28/2008	7/20/2009
Wm. Beaudin & Sons	C523070053	PAV	Construction of VT asphalt ... etc.	18.00%	29.94%	\$62,717.81	18.00%	27.96%	\$62,717.81	7	\$209,481.99	\$226,183.47	\$224,310.11	6/11/2007	8/3/2009
Wm. Beaudoin & Sons, Inc.	C523060098	PAV	Construction of VT asphalt ... etc.	18.00%	28.08%	\$82,761.59	18.00%	24.46%	\$82,761.59	2	\$294,720.86	\$286,699.11	\$338,334.13	9/29/2006	8/20/2009
Stark Asphalt	C523080066	PAV	Construction of asphalt pavement .. Etc.	18.00%	25.43%	\$43,527.71	18.00%	23.43%	\$43,527.71	5	\$171,136.90	\$196,000.30	\$185,741.55	5/20/2008	9/4/2009
Milwaukee General Construct	C523070104	PAV	Construction of 7" concrete alley ... etc.	18.00%	17.64%	\$8,917.50	18.00%	17.64%	\$8,917.50	2	\$50,560.08	\$60,880.50	\$50,560.03	9/20/2007	8/19/2009
Wm. Beaudoin & Sons	C523070051	PAV	Median landscaping	10.00%	9.04%	\$6,970.21	10.00%	9.25%	\$6,970.21	3	\$77,131.15	\$106,092.25	\$75,353.75	5/29/2007	8/12/2009
Wm. Beaudoin & Sons	C523070092	PAV	Construction of concrete curb, ... etc.	18.00%	18.08%	\$20,951.64	18.00%	17.70%	\$20,951.64	4	\$115,884.55	\$122,089.15	\$118,341.59	8/23/2007	8/3/2009
			PAV Total			\$426,836.60			\$426,816.60		\$1,674,973.76	\$1,862,969.03	\$1,804,242.10		
			PAV Average	17.64%	25.81%	\$38,803.33	17.64%	24.59%	\$38,801.51		\$152,270.34	\$169,360.82	\$164,022.01		
Sigma Environmental	C523080023	SEW	Sanitary manhole inspections	10.00%	12.34%	\$13,999.70	10.00%	12.66%	\$13,999.70	5	\$113,461.00	\$231,000.00	\$110,590.00	3/3/2008	11/17/2008
American Sewer Services	C523080001	SEW	Combined sewer relay	24.00%	26.72%	\$97,106.42	24.00%	26.61%	\$97,106.42	6	\$363,395.00	\$429,000.00	\$364,967.86	1/11/2008	2/17/2009
Rawson Contractors	C523080002	SEW	Sewer relay	15.00%	17.40%	\$71,851.52	15.00%	17.79%	\$71,851.52	6	\$412,969.00	\$688,000.00	\$403,800.25	1/11/2008	3/5/2009
United Sewer and Water	C523080025	SEW	Combined sewer relay and lining	20.00%	20.39%	\$119,673.45	20.00%	20.82%	\$119,673.45	8	\$586,793.00	\$868,000.00	\$574,879.98	3/7/2008	3/4/2009
American Sewer Services	C523080055	SEW	Combined sewer relay	15.00%	18.01%	\$54,399.50	15.00%	17.28%	\$54,399.50	6	\$302,048.00	\$495,000.00	\$314,754.00	5/7/2008	4/20/2009
Rawson Contractors	C523080044	SEW	Sewer relay and lining	16.00%	34.72%	\$169,402.56	16.00%	35.75%	\$169,402.56	6	\$487,891.00	\$810,000.00	\$473,792.56	4/14/2008	5/4/2009
American Sewer Services	C523080074	SEW	Combined sewer relay	17.00%	17.23%	\$84,826.89	17.00%	18.63%	\$84,826.89	4	\$492,310.00	\$455,000.00	\$455,300.67	6/2/2008	4/4/2009
Underground Pipeline	C523080087	SEW	Combined sewer relay and lining	22.00%	23.40%	\$18,643.40	22.00%	22.61%	\$18,643.40	5	\$79,659.50	\$94,000.00	\$82,440.50	7/1/2008	4/2/2009
United Sewer and Water	C523080108	SEW	Sewer repair and lining and water main	20.00%	15.40%	\$26,774.56	20.00%	15.40%	\$26,774.56	6	\$173,815.00	\$202,000.00	\$173,815.00	8/21/2008	7/29/2009
Rawson Contractors, Inc.	C523070073	SEW	Sewer relay	22.00%	17.90%	\$72,861.25	22.00%	18.41%	\$72,861.25	4	\$406,957.00	\$282,000.00	\$395,730.15	7/30/2007	2/3/2009
American Sewer Services	C523080153	SEW	Sanitary sewer relay	21.00%	41.27%	\$71,302.41	21.00%	41.27%	\$71,302.41	8	\$172,778.00	\$232,000.00	\$172,778.00	12/29/2008	10/21/2009
American Sewer Services	C523080063	SEW	Combined Sewer Relay	16.00%	17.16%	\$73,266.40	16.00%	16.73%	\$73,266.40	5	\$426,885.75	\$454,000.00	\$437,925.89	5/15/2008	7/31/2009
M.J. Construction, Inc.	C523070132	SEW	Combined sewer relay	19.00%	27.98%	\$33,404.48	19.00%	27.64%	\$33,404.48	7	\$119,400.90	\$159,000.00	\$120,874.10	12/11/2007	2/2/2009
American Sewer Services	C523070025	SEW	Sanitary storm sewer lining and relay	10.00%	12.07%	\$98,620.46	10.00%	11.53%	\$98,620.46	5	\$816,776.00	\$876,000.00	\$855,001.57	3/19/2007	3/27/2009
D. F. Tomasini	C523080080	SEW	Sanitary Sewer relay	25.00%	31.21%	\$261,805.08	25.00%	31.21%	\$261,805.08	8	\$838,968.00	\$1,030,000.00	\$838,968.00	6/17/2008	9/21/2009
Underground Pipeline Const	C530070106	SEW	Storm sewer and pump station	5.00%	3.67%	\$16,643.14	5.00%	3.59%	\$16,643.14	3	\$453,245.00	\$764,000.00	\$463,959.70	9/28/2007	5/6/2009
Rawson Contractors, Inc.	C523070096	SEW	Combined sewer relay	28.00%	44.40%	\$376,612.34	28.00%	43.84%	\$376,612.34	6	\$848,204.00	\$1,193,000.00	\$859,054.53	8/24/2007	5/1/2009
Insituform Technologies	C523060123	SEW	Storm sewer lining	10.00%	8.96%	\$19,046.00	10.00%	8.96%	\$19,046.00	4	\$212,520.00	\$719,000.00	\$212,520.00	12/28/2006	3/13/2009
Advanced Enterprises	C523070064	SEW	Sewer relay and lining	16.00%	54.42%	\$143,525.00	16.00%	56.63%	\$143,525.00	6	\$263,728.00	\$365,000.00	\$253,443.90	7/5/2007	1/15/2009

Exhibit A: Emerging Business Enterprise Statistics

Visu-Sewer Clean and Seal	C523070010	SEW	Combined sewer lining	6.00%	10.69%	\$34,949.88	6.00%	10.76%	\$34,949.88	3	\$327,053.50	\$658,000.00	\$324,914.00	2/12/2007	1/15/2009
D.F. Tomasini Contractors, I	C523070102	SEW	Storm water treatment structures	14.00%	11.44%	\$93,197.25	14.00%	11.24%	\$93,197.25	4	\$814,939.00	\$756,000.00	\$829,281.55	9/13/2007	1/15/2009
Visu-Sewer Clean and Seal	C523080011	SEW	Combined sewer lining	2.00%	6.85%	\$4,550.50	2.00%	6.82%	\$4,550.50	3	\$66,430.00	\$161,000.00	\$66,732.00	2/19/2008	6/1/2009
M.J. Construction, Inc.	C523080054	SEW	Combined sewer relay	17.00%	22.14%	\$98,116.99	17.00%	22.32%	\$98,116.99	6	\$443,226.90	\$612,000.00	\$439,680.25	5/6/2008	6/12/2009
M.J. Construction, Inc.	C523070121	SEW	Combined and sanitary relay	19.00%	28.28%	\$197,837.74	19.00%	27.82%	\$197,837.74	8	\$699,591.80	\$1,073,000.00	\$711,138.04	11/6/2007	7/21/2009
M.J. Construction, Inc.	C523070079	SEW	Combined sewer relay	16.00%	22.87%	\$62,111.55	16.00%	22.39%	\$62,111.55	7	\$271,570.15	\$370,000.00	\$277,414.03	8/8/2007	7/21/2009
United Sewer and Water	C523080038	SEW	Combined sewer relay	24.00%	24.53%	\$39,136.09	24.00%	24.98%	\$39,136.09	5	\$159,527.00	\$260,000.00	\$156,647.90	4/4/2008	2/5/2009
American Sewer Services	C52307122	SEW	Sanitary sewer relay	15.00%	19.11%	\$156,516.44	15.00%	22.90%	\$156,516.44	3	\$818,965.50	\$820,000.00	\$683,390.98	11/12/2007	8/20/2009
American Sewer Services	C523080073	SEW	Combined sewer relay	19.00%	21.79%	\$49,378.62	19.00%	21.71%	\$49,378.62	6	\$226,603.50	\$304,000.00	\$227,443.75	6/2/2008	7/31/2009
American Sewer Services	C523080026	SEW	Combined sewer and lining	16.00%	16.46%	\$189,211.81	16.00%	16.75%	\$189,211.81	3	\$1,149,281.50	\$1,128,000.00	\$1,129,715.58	3/7/2008	8/20/2009
C.W. Purpero, Inc.	C523080020	SEW	Sanitary sewer relay and lining	22.00%	29.58%	\$55,074.25	22.00%	28.73%	\$55,074.25	6	\$186,175.55	\$395,000.00	\$191,675.21	2/28/2008	1/23/2009
			SEW Total			\$2,803,845.68			\$2,803,845.68		\$12,735,168.55	\$16,883,000.00	\$12,602,629.95		
			SEW Average	16.70%	21.95%	\$93,461.52	16.70%	22.13%	\$93,461.52		\$424,505.62	\$562,766.67	\$420,087.67		
Underground Pipeline	C641080022	WAT	Water main relay	24.00%	31.60%	\$248,151.60	24.00%	32.09%	\$248,151.60	3	\$785,390.00	\$876,000.00	\$773,367.50	6/3/2008	1/29/2009
Underground Pipeline	C641080083	WAT	Water main relays	18.00%	18.88%	\$71,281.81	18.00%	17.74%	\$71,281.81	2	\$377,560.00	\$464,500.00	\$401,835.60	6/10/2008	2/3/2009
United Sewer and Water	C641080084	WAT	Water main relays	18.00%	15.67%	\$42,147.04	18.00%	15.58%	\$42,147.04	3	\$268,954.00	\$265,000.00	\$270,439.08	6/18/2008	2/27/2009
Underground Pipeline Const	C641070127	WAT	Water main relays	20.00%	31.97%	\$147,977.30	20.00%	32.00%	\$147,977.30	5	\$462,836.00	\$577,000.00	\$462,360.46	12/28/2007	3/27/2009
J.F. Ahren Co.	C641060116	WAT	Bebuild water pump and valve replacements	10.00%	3.67%	\$14,331.60	10.00%	3.05%	\$14,331.60	2	\$390,000.00	\$335,000.00	\$469,277.00	11/21/2006	5/4/2009
M.J. Construction, Inc.	C641080027	WAT	Water main relays	27.00%	28.11%	\$220,839.92	27.00%	29.44%	\$220,839.92	4	\$785,761.50	\$918,000.00	\$750,255.33	3/7/2008	6/8/2009
American Sewer Services	C641080007	WAT	Water main relays	25.00%	25.05%	\$245,789.94	25.00%	24.44%	\$245,789.94	4	\$981,194.00	\$952,000.00	\$1,005,502.41	2/7/2008	8/21/2009
Walsdorf Roofing Co.	C641090018	WAT	Roofing for a pumping station	20.00%	22.29%	\$22,048.29	20.00%	22.29%	\$22,048.29	4	\$98,900.00	\$180,000.00	\$98,900.00	3/10/2009	8/27/2009
			WAT Total			\$1,012,567.50			\$1,012,567.50		\$4,150,595.50	\$4,567,500.00	\$4,231,937.38		
			WAT Average	20.25%	22.16%	\$126,570.94	20.25%	22.08%	\$126,570.94		\$518,824.44	\$570,937.50	\$528,992.17		
			Total to Date			\$5,452,849.52			\$5,452,829.52	282	\$23,503,726.12	\$29,793,891.03	\$23,723,318.58		
			Average to Date	18.24%	28.71%	\$83,889.99	18.24%	22.99%	\$83,889.68	4.2	\$361,595.79	\$458,367.55	\$364,974.13		

Use this sheet for the new "EBE ranked by division"

Emerging Business Enterprise

CONTRACTOR	CONTR. NO.	TYPE OF PROJECT
Gibraltar Construction, LLC	C545070086	B&F
Grunau Company, Inc.	C545070090	B&F
Arteaga Construction, Inc.	C545070101	B&F
J & H Heating, Inc.	C545070118	B&F
M.J. Construction, Inc.	C523070111	SEW
M.J. Construction, Inc.	C523070114	SEW
M.J. Construction, Inc.	C523070115	SEW
Underground Pipeline Construction, Inc.	C523070131	SEW
M.J. Construction, Inc.	C641070116	WAT
Pieper Electric, Inc.	C641070135	WAT

DESCRIPTION OF PROJECT
Playground reconstruction
Geothermal system installation
Basement air handler replacement
Basement air handler replacements
Combined sewer relay
Combined sewer relay
Combined sewer relay
Combined sewer relay and lining
Watermain relay
Linwood perimeter lighting

BID AMOUNT			FINAL COST	
EBE Required (%)	EBE Performed (% of bid amount)	Performed \$ Amount	EBE Required (%)	EBE Performed (% of final cost)
18.00%	27.14%	\$19,728.75	18.00%	22.96%
9.00%	11.20%	\$30,782.10	9.00%	11.46%
18.00%	64.40%	\$47,015.00	18.00%	66.94%
18.00%	37.42%	\$33,400.00	18.00%	15.65%
20.00%	20.36%	\$38,134.95	20.00%	22.76%
15.00%	20.77%	\$43,938.81	15.00%	18.93%
36.00%	31.95%	\$20,544.72	36.00%	31.95%
11.00%	27.92%	\$100,664.99	11.00%	27.64%
25.00%	30.16%	\$86,132.31	25.00%	28.81%
13.00%	20.55%	\$35,550.93	13.00%	19.62%

ST

Peformed \$ Amount	NO. OF BIDS	TOTAL CONTRACT BID AMOUNT	ESTIMATED CONTRACT AMOUNT	ACTUAL FINAL COST	AWARD DATE	CLOSING DATE
\$19,728.75	3	\$72,686.00	\$101,000.00	\$85,912.13	8/15/2007	12/1/2008
\$30,782.10	1	\$274,800.00	\$140,000.00	\$268,667.00	8/21/2007	10/21/2008
\$47,015.00	4	\$73,000.00	\$160,000.00	\$70,230.00	9/13/2007	1/2/2009
\$33,400.00	4	\$89,258.50	\$160,000.00	\$213,364.00	11/8/2007	12/22/2008
		\$509,744.50	\$561,000.00	\$638,173.13		
	3	\$127,436.13	\$140,250.00	\$159,543.28		
\$38,134.95	5	\$187,269.15	\$145,000.00	\$167,585.20	10/2/2007	12/14/2008
\$43,938.81	7	\$211,526.65	\$329,000.00	\$232,106.71	11/6/2007	11/20/2008
\$20,544.72	6	\$64,302.32	\$70,000.00	\$64,302.32	11/6/2007	11/18/2008
\$100,664.99	6	\$360,485.00	\$689,000.00	\$364,151.17	12/11/2007	12/29/2008
		\$823,583.12	\$1,233,000.00	\$828,145.40		
	6	\$205,895.78	\$308,250.00	\$207,036.35		
\$86,132.31	4	\$285,570.00	\$366,000.00	\$298,943.05	11/5/2007	11/3/2008
\$35,550.93	2	\$173,000.00	\$130,000.00	\$181,210.76	12/14/2007	12/17/2008
		\$664,465.78	\$804,250.00	\$687,190.16		
	4	\$221,488.59	\$268,083.33	\$229,063.39		

Summary Statistics

	NO. OF BIDS	TOTAL CONTRACT BID AMOUNT	ESTIMATED CONTRACT AMOUNT
Buildings and Fleet		\$509,744.50	\$561,000.00
	3	\$127,436.13	\$140,250.00
Sewer		\$823,583.12	\$1,233,000.00
	6	\$205,895.78	\$308,250.00
Water		\$664,465.78	\$804,250.00
	4	\$221,488.59	\$268,083.33

**Total
Average**

**Total
Average**

**Total
Average**

ACTUAL FINAL COST

\$638,173.13	Total
\$159,543.28	Average
\$828,145.40	Total
\$207,036.35	Average
\$687,190.16	Total
\$229,063.39	Average

Exhibit B: EBE Requirements and Performance based on Type of Project

This sheet is to be deleted

CONTRACTOR	CONTR. NO.	TYPE OF PROJECT	DESCRIPTION OF PROJECT	BID AMOUNT			FINAL COST			NO. OF BIDS	TOTAL CONTRACT BID AMOUNT	ESTIMATED CONTRACT AMOUNT	ACTUAL FINAL COST	AWARD DATE
				EBE Required (%)	EBE Performed (% of bid amount)	Performed \$ Amount	EBE Required (%)	EBE Performed (% of final cost)	Performed \$ Amount					
Kubenik Mechanical	C545070008	B&F	Information Center Remodeling	18.00%	29.56%	\$5,587.00	18.00%	27.67%	\$5,587.00	4	\$ 18,900.00	\$25,000.00	\$20,194.00	1/29/2007
Payne & Dolan	C545070036	B&F	Riverside Parkway	20.00%	13.00%	\$26,951.62	20.00%	16.67%	\$26,951.62	1	\$ 206,283.00	\$166,300.00	\$161,699.65	4/23/2007
Bluemel's Maintenance Serv	C545070037	B&F	Riverside Parkway	20.00%	38.60%	\$25,977.80	20.00%	35.13%	\$25,977.80	1	\$ 67,300.00	\$67,800.00	\$73,951.56	4/23/2007
Northway Fencing	C545070038	B&F	Riverside Parkway	10.00%	21.76%	\$10,825.08	10.00%	19.90%	\$10,825.08	1	\$ 49,740.00	\$37,100.00	\$54,397.40	4/23/2007
WM. Sackerson	C545070044	B&F	Façade Repair	18.00%	26.00%	\$29,323.00	18.00%	20.30%	\$29,323.00	2	\$ 112,920.00	\$110,000.00	\$144,276.84	4/12/2007
Mared Mechanical	C545070067	B&F	AC Instable	18.00%	30.90%	\$6,406.50	18.00%	28.36%	\$6,406.50	3	\$ 20,733.00	\$35,000.00	\$22,593.50	7/2/2008
Champion Environmental Se	C545070076	B&F	Asbestos & PCB Removal & Rfireproofing	18.00%	21.10%	\$32,705.00	18.00%	17.45%	\$32,705.00	4	\$ 155,000.00	\$250,000.00	\$187,424.00	7/26/2007
Wisconsin Restoration, Inc.	C641070084	B&F	Chimney Repair & Restoration	20.00%	20.04%	\$22,645.20	20.00%	20.04%	\$22,645.20	2	\$ 113,000.00	\$50,000.00	\$113,000.00	8/10/2007
Rawson Contractors	C523070047	B&F	Lift Station Rehab	5.00%	6.20%	\$14,064.08	5.00%	5.85%	\$14,064.08	2	\$ 226,840.00	\$270,000.00	\$240,476.40	5/16/2007
Schroeder Solutions	C544070126	B&F	Furniture Installation	10.00%	13.70%	\$17,059.45	10.00%	13.70%	\$17,059.45	1	\$ 124,521.50	\$124,521.50	\$124,521.50	11/20/2007
		B&F Total												
		B&F Average												
		B&F Average		15.44%	21.26%			19.71%						
J.F. Cook Company, Inc.	C514070065	PAV	Parking Structure Repair	19.00%	18.96%	\$42,779.40	19.00%	18.37%	\$42,779.40	1	\$ 225,633.00	\$242,208.00	\$232,927.82	7/9/2007
Interstate Sealant & Concrete	C523070022	PAV	Crack Sealing	20.00%	59.00%	\$87,243.29	20.00%	58.95%	\$87,243.29	3	\$ 147,447.23	\$167,826.12	\$147,984.13	3/12/2007
Payne & Dolan	C523070029	PAV	Asphalt Resurfacing	20.00%	17.55%	\$49,684.31	20.00%	20.20%	\$49,684.31	3	\$ 283,167.42	\$287,514.00	\$245,961.92	3/27/2007
Snorek Construction, Inc.	C523070039	PAV	Alley Reconstruct	18.00%	19.80%	\$19,266.53	18.00%	18.35%	\$19,266.53	4	\$ 97,305.70	\$108,452.75	\$104,983.82	4/26/2007
Snorek Construction, Inc.	C523070058	PAV	Alley Reconstruct	18.00%	19.71%	\$25,361.15	18.00%	19.12%	\$25,361.15	5	\$ 128,652.00	\$149,069.00	\$132,659.21	6/14/2007
Milwaukee General	C523070059	PAV	Concrete Reconstruct	18.00%	20.30%	\$27,294.12	18.00%	20.99%	\$27,294.12	6	\$ 134,453.77	\$143,468.75	\$130,060.09	6/15/2007
Milwaukee General	C523070071	PAV	Alley Reconstruct	18.00%	19.00%	\$18,698.56	18.00%	18.97%	\$18,698.56	5	\$ 98,413.45	\$111,241.25	\$98,583.68	7/30/2007
DC Burbach, Inc.	C523070078	PAV	Asphalt Overlay	18.00%	18.40%	\$14,691.22	18.00%	18.01%	\$14,691.22	6	\$ 79,843.56	\$81,945.80	\$81,583.10	8/7/2007
Milwaukee General	C523070081	PAV	Asphalt Overlay	18.00%	17.96%	\$27,185.41	18.00%	16.45%	\$27,185.41	5	\$ 151,366.43	\$158,982.50	\$165,266.85	8/15/2007
Edgerton Contractors, Inc.	C523070089	PAV	Removing Pavement & Grading	18.00%	19.80%	\$83,567.28	18.00%	22.20%	\$83,567.28	1	\$ 421,876.70	\$437,099.12	\$384,639.53	8/24/2007
Snorek Construction, Inc.	C523070095	PAV	Asphalt Overlay	18.00%	18.70%	\$57,971.09	18.00%	17.56%	\$57,971.09	5	\$ 310,005.82	\$334,271.35	\$330,062.63	8/24/2007
Vista Design & Construction,	C545070061	PAV	Concrete Reconstruct	18.00%	55.80%	\$163,494.00	18.00%	50.18%	\$163,494.00	3	\$ 293,000.00	\$210,000.00	\$325,809.20	6/15/2007
Advanced Enterprises, Inc.	C523070070	PAV	Paving	10.00%	67.40%	\$179,807.70	10.00%	97.34%	\$179,807.70	3	\$ 266,777.00	\$319,000.00	\$184,714.72	7/10/2007
Bluemel's Maintenance Serv	C545070120	PAV	Landscaping - play area	18.00%	22.60%	\$8,770.74	18.00%	24.71%	\$8,770.74	3	\$ 38,808.60	\$40,900.00	\$35,500.00	11/5/2007
		PAV Total												
		PAV Average												
		PAV Average		17.79%	28.21%			30.10%						
American Sewer Services	C523070004	SEW	Combined Sewer Relay & Lining	10.00%	11.44%	\$102,325.13	10.00%	11.91%	\$102,325.13	8	\$ 894,663.10	\$1,711,000.00	\$859,076.54	2/2/2007
American Sewer Services	C523070003	SEW	Combined Sewer & Watermain Relay	20.00%	23.00%	\$82,052.39	20.00%	23.79%	\$82,052.39	8	\$ 356,749.50	\$596,000.00	\$344,940.18	1/22/2007
American Sewer Services	C523070005	SEW	Sanitary Sewer Relay & Bypass Pump Installa	18.00%	17.00%	\$36,414.17	18.00%	15.34%	\$36,414.17	6	\$ 214,201.00	\$203,000.00	\$237,415.13	1/24/2007
MJ Construction	C523070011	SEW	Combined Sewer Relay	18.00%	22.10%	\$42,703.96	18.00%	21.40%	\$42,703.96	5	\$ 193,307.68	\$301,000.00	\$199,869.53	2/12/2007
Underground Pipeline, Inc.	C523070017	SEW	Combined Sewer Relay & Lining	13.00%	17.59%	\$18,409.00	13.00%	17.37%	\$18,409.00	6	\$ 104,631.00	\$174,000.00	\$105,974.30	3/7/2007
Visu-Sewer Clean & Seal, In	C523070018	SEW	Sanitary Manhole Inspection	10.00%	13.14%	\$19,526.49	10.00%	13.30%	\$19,526.49	5	\$ 148,564.75	\$229,000.00	\$146,815.69	3/7/2007
MJ Construction	C523070020	SEW	Combined Sewer Relay	15.00%	20.20%	\$18,041.63	15.00%	18.87%	\$18,041.63	6	\$ 89,315.00	\$107,000.00	\$95,596.53	3/9/2007
MJ Construction	C523070021	SEW	Combined Sewer Relay & Lining	11.00%	22.20%	\$47,397.75	11.00%	21.93%	\$47,397.75	5	\$ 213,503.40	\$324,000.00	\$216,102.69	3/9/2007
MJ Construction	C523070024	SEW	Sanitary Manhole Rehab	21.00%	19.57%	\$194,917.13	21.00%	23.20%	\$194,917.13	5	\$ 995,791.00	\$1,105,000.00	\$838,910.82	3/15/2007
Advanced Enterprises, Inc.	C523070034	SEW	Combined Sewer Relay	15.00%	90.00%	\$476,356.50	15.00%	90.32%	\$476,356.50	6	\$ 529,285.00	\$595,000.00	\$527,437.81	4/13/2007
Visu-Sewer Clean & Seal, In	C523070041	SEW	Sanitary Sewer Exams	5.00%	7.70%	\$2,511.68	5.00%	5.98%	\$2,511.68	2	\$ 32,619.20	\$50,000.00	\$42,007.20	4/27/2007
United Sewer & Water, Inc.	C523070042	SEW	Combined Sewer Relay & Lining	20.00%	22.40%	\$20,224.96	20.00%	22.65%	\$20,224.96	6	\$ 90,290.00	\$161,000.00	\$89,288.52	4/27/2007
Visu-Sewer Clean & Seal, In	C523070048	SEW	Combined Sewer Relay & Lining	2.00%	3.40%	\$6,157.98	2.00%	3.38%	\$6,157.98	4	\$ 181,117.00	\$322,000.00	\$182,259.50	5/29/2007

Exhibit B: EBE Requirements and Performance based on Type of Project

MJ Construction	C523070052	SEW	Combined Sewer Relay	17.00%	33.60%	\$185,606.85	17.00%	31.33%	\$185,606.85	7	\$ 552,401.35	\$950,000.00	\$592,411.41	6/4/2007
MJ Construction	C523070055	SEW	Combined Sewer Relay	19.00%	27.00%	\$96,293.48	19.00%	24.83%	\$96,293.48	5	\$ 356,642.50	\$483,000.00	\$387,809.26	6/14/2007
American Sewer Services	C523070056	SEW	Combined Sewer Lining & Sanitary Sewer	12.00%	12.14%	\$17,972.11	12.00%	11.78%	\$17,972.11	4	\$ 148,001.00	\$193,000.00	\$152,619.42	6/15/2007
American Sewer Services	C523070060	SEW	Combined Sanitary Sewer Relay & Watermain	21.00%	22.70%	\$101,931.46	21.00%	24.03%	\$101,931.46	3	\$ 449,037.25	\$500,000.00	\$424,257.63	6/15/2007
Visu-Sewer Clean & Seal, Inc.	C523070069	SEW	Sanitary Sewer Lining	6.00%	19.30%	\$11,188.21	6.00%	17.23%	\$11,188.21	4	\$ 57,970.00	\$117,000.00	\$64,920.00	7/13/2007
Visu-Sewer Clean & Seal, Inc.	C523070109	SEW	Combined Sewer Relay & Lining	15.00%	23.80%	\$18,323.67	15.00%	21.65%	\$18,323.67	2	\$ 76,990.20	\$152,000.00	\$84,646.68	9/27/2007
American Sewer Services	C641070023	SEW	Watermain Relays	21.00%	21.10%	\$111,521.26	21.00%	19.01%	\$111,521.26	5	\$ 527,116.50	\$626,000.00	\$586,571.05	3/14/2007
		SEW Total												
		SEW Average												
		SEW Average		14.45%	22.47%			21.96%						\$6,178,929.89
														\$308,946.49
Underground Pipeline, Inc.	C523070094	WAT	Sanitary, Storm Sewer, & Watermain	8.00%	20.30%	\$16,611.19	8.00%	29.95%	\$16,611.19	6	\$ 81,828.50	\$108,000.00	\$55,469.78	8/23/2007
United Sewer & Water, Inc.	C641070006	WAT	Watermain Relays	15.00%	16.47%	\$18,523.42	15.00%	13.06%	\$18,523.42	5	\$ 112,461.00	\$135,000.00	\$141,795.59	1/25/2007
United Sewer & Water, Inc.	C641070007	WAT	Watermain Relays	22.00%	14.70%	\$60,836.83	22.00%	13.40%	\$60,836.83	5	\$ 413,856.00	\$486,000.00	\$454,021.48	2/1/2007
MJ Construction	C641070015	WAT	Watermain Relays	20.00%	26.20%	\$58,632.52	20.00%	23.42%	\$58,632.52	5	\$ 223,788.25	\$257,000.00	\$250,309.95	3/6/2007
United Sewer & Water, Inc.	C641070030	WAT	Watermain Relays	26.00%	26.90%	\$59,030.17	26.00%	26.56%	\$59,030.17	3	\$ 219,443.00	\$220,000.00	\$222,279.45	4/4/2007
Advanced Enterprises, Inc.	C641070031	WAT	Watermain	25.00%	99.30%	\$158,695.99	25.00%	90.60%	\$158,695.99	3	\$ 159,785.25	\$158,000.00	\$175,232.24	4/10/2007
MJ Construction	C641070014	WAT	Watermain Relays	23.00%	25.80%	\$104,267.73	23.00%	25.25%	\$104,267.73	6	\$ 404,138.50	\$495,000.00	\$412,978.45	3/20/2007
MJ Construction	C641070026	WAT	Watermain Relays	25.00%	26.00%	\$168,026.01	25.00%	24.81%	\$168,026.01	4	\$ 646,253.90	\$791,000.00	\$677,369.25	3/16/2007
American Sewer Services	C641070040	WAT	Watermain Relays	27.00%	27.10%	\$113,541.95	27.00%	26.80%	\$113,541.95	3	\$ 418,974.00	\$444,000.00	\$423,706.73	4/23/2007
American Sewer Services	C641070046	WAT	Watermain Relays	23.00%	23.50%	\$50,528.06	23.00%	23.76%	\$50,528.06	3	\$ 215,013.00	\$269,000.00	\$212,638.69	5/14/2007
American Sewer Services	C641070080	WAT	Watermain Relays	22.00%	22.80%	\$64,343.42	22.00%	22.10%	\$64,343.42	4	\$ 282,208.00	\$294,000.00	\$291,096.00	8/6/2007
United Sewer & Water, Inc.	C641070045	WAT	Watermain Relays	22.00%	23.60%	\$58,652.14	22.00%	23.73%	\$58,652.14	3	\$ 248,526.00	\$310,000.00	\$247,192.71	5/8/2007
United Sewer & Water, Inc.	C641070062	WAT	Watermain Relays	20.00%	20.40%	\$60,881.86	20.00%	20.05%	\$60,881.86	3	\$ 298,440.50	\$340,000.00	\$303,677.21	6/26/2007
Underground Pipeline, Inc.	C641070066	WAT	Watermain Relays	26.00%	29.50%	\$181,181.77	26.00%	28.77%	\$181,181.77	4	\$ 614,175.50	\$667,000.00	\$629,716.19	7/11/2007
MJ Construction, Inc.	C641070072	WAT	Watermain Relays	25.00%	25.70%	\$179,721.36	25.00%	27.60%	\$179,721.36	3	\$ 700,653.30	\$790,000.00	\$650,848.24	7/30/2007
United Sewer & Water, Inc.	C641070097	WAT	Watermain Relays	22.00%	18.66%	\$72,574.92	22.00%	19.30%	\$72,574.92	5	\$ 388,969.00	\$382,000.00	\$375,489.90	7/27/2007
American Sewer Services	C641070113	WAT	Watermain Relays	24.00%	24.50%	\$84,802.46	24.00%	23.66%	\$84,802.46	3	\$ 346,132.50	\$386,000.00	\$358,436.69	10/12/2007
		WAT Average		22.06%	27.73%			27.22%						
		WAT Average												\$346,015.21
		WAT Total												\$5,882,258.55
Grand Total														\$15,784,265.99

Average EBE Performance by DPW Division

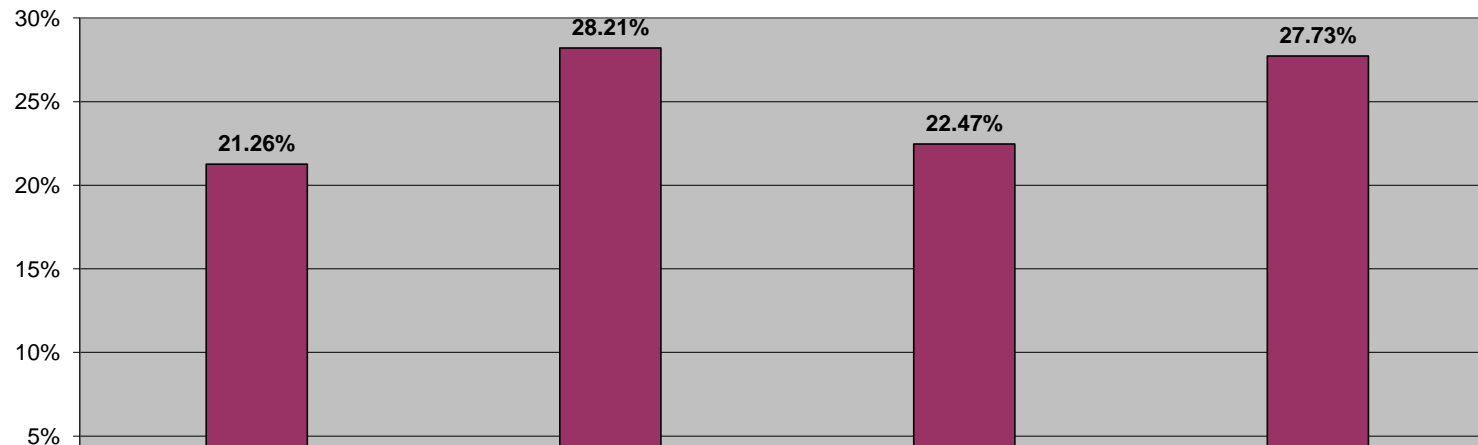


Exhibit B: EBE Requirements and Performance based on Type of Project

CLOSING DATE
9/13/2007
12/18/2007
2/14/2008
11/2/2007
1/24/2008
11/1/2007
5/2/2008
11/9/2007
9/17/2008
8/18/2009
7/28/2008
12/11/2007
12/18/2007
1/24/2008
4/28/2008
5/27/2008
4/9/2008
4/14/2008
5/1/2008
5/14/2008
5/25/2008
7/7/2008
8/25/2008
9/24/2008
8/4/2008
12/12/2007
3/20/2008
7/3/2008
12/12/2007
2/5/2008
4/22/2008
7/24/2008
2/28/2008
3/11/2008
11/14/2007
2/28/2008
7/17/2008

Exhibit B: EBE Requirements and Performance based on Type of Project

4/2/2008
4/8/2008
12/5/2007
8/30/2007
8/11/2008
4/4/2008
7/24/2008
5/1/2008
1/15/2008
5/9/2008
8/18/2007
2/4/2008
2/5/2008
9/16/2008
9/11/2008
9/18/2008
9/18/2008
9/11/2008
8/14/2007
3/4/2008
3/26/2008
4/28/2008
4/4/2008
12/6/2007

No Emerging Enterprise Businesses and No Target Resident Workers			BID Amount
no.	Contractor	Contract No.	
	Contracto Design Assoc.	C545070001	
1			
2			
3			
4			
5			
6			
7			
8			
9			
10			
12			
13			

\$0.00 Total

Less than 25% requirements		%	BID Amount
Contract No.			
70038		15	\$49,740.00
70087		5	\$503,609.00
70090		12	\$274,800.00
70123		3	\$852,373.02
70126		10	\$124,521.05
			\$1,805,043.07