



CITY OF MILWAUKEE
HEALTH DEPARTMENT
OFFICE OF VIOLENCE PREVENTION

BHD | MILWAUKEE COUNTY
Behavioral
Health
Division





WWW.414LIFE.COM

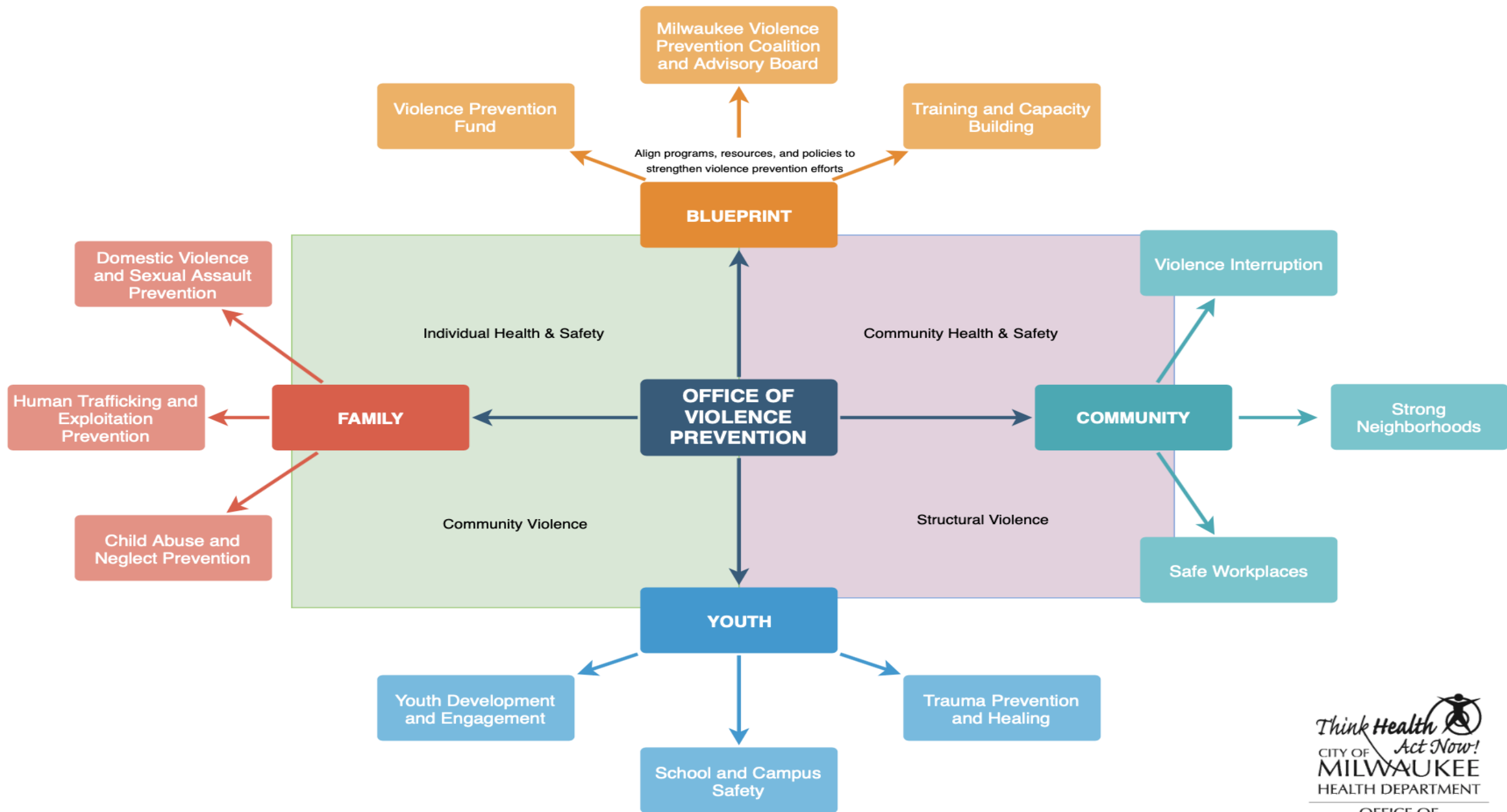
OFFICE OF VIOLENCE PREVENTION

Mission

To prevent and reduce violence through *partnerships* that strengthen youth, families, and neighborhoods.

Major Programs and Initiatives

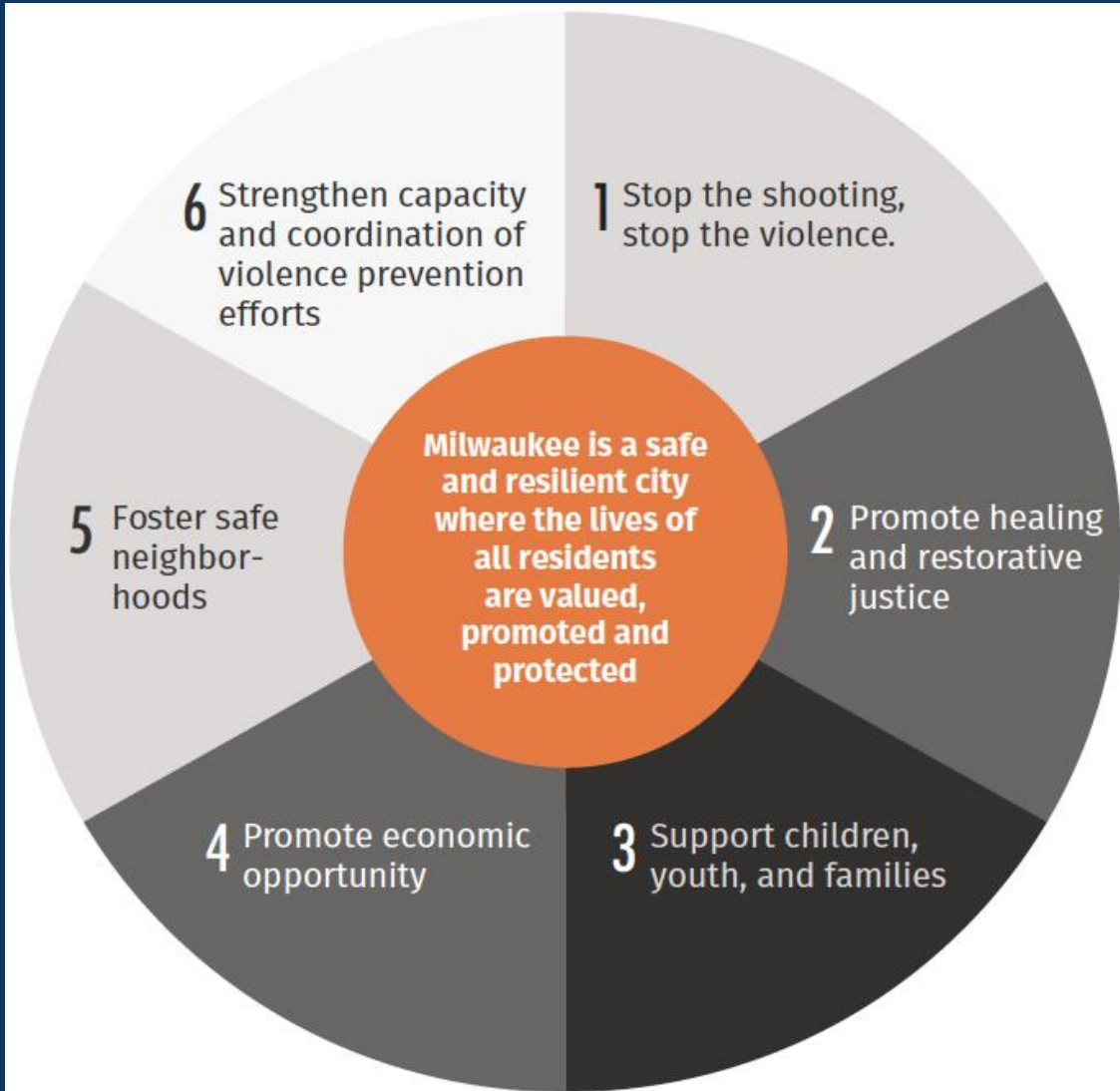
- ❖ Commission on Domestic Violence and Sexual Assault
- ❖ Safe Visitation and Exchange Center
- ❖ Coaching Boys to Men
- ❖ Recast Milwaukee
- ❖ Trauma Response Partnership
- ❖ 414 LIFE
- ❖ Blueprint for Peace



BLUEPRINT FOR PEACE

BLUEPRINT VISION

MILWAUKEE IS A **SAFE AND RESILIENT** CITY WHERE THE LIVES OF ALL RESIDENTS ARE **VALUED, PROMOTED, AND PROTECTED.**



1. STOP THE SHOOTING. STOP THE VIOLENCE

2. PROMOTE HEALING AND RESTORATIVE JUSTICE

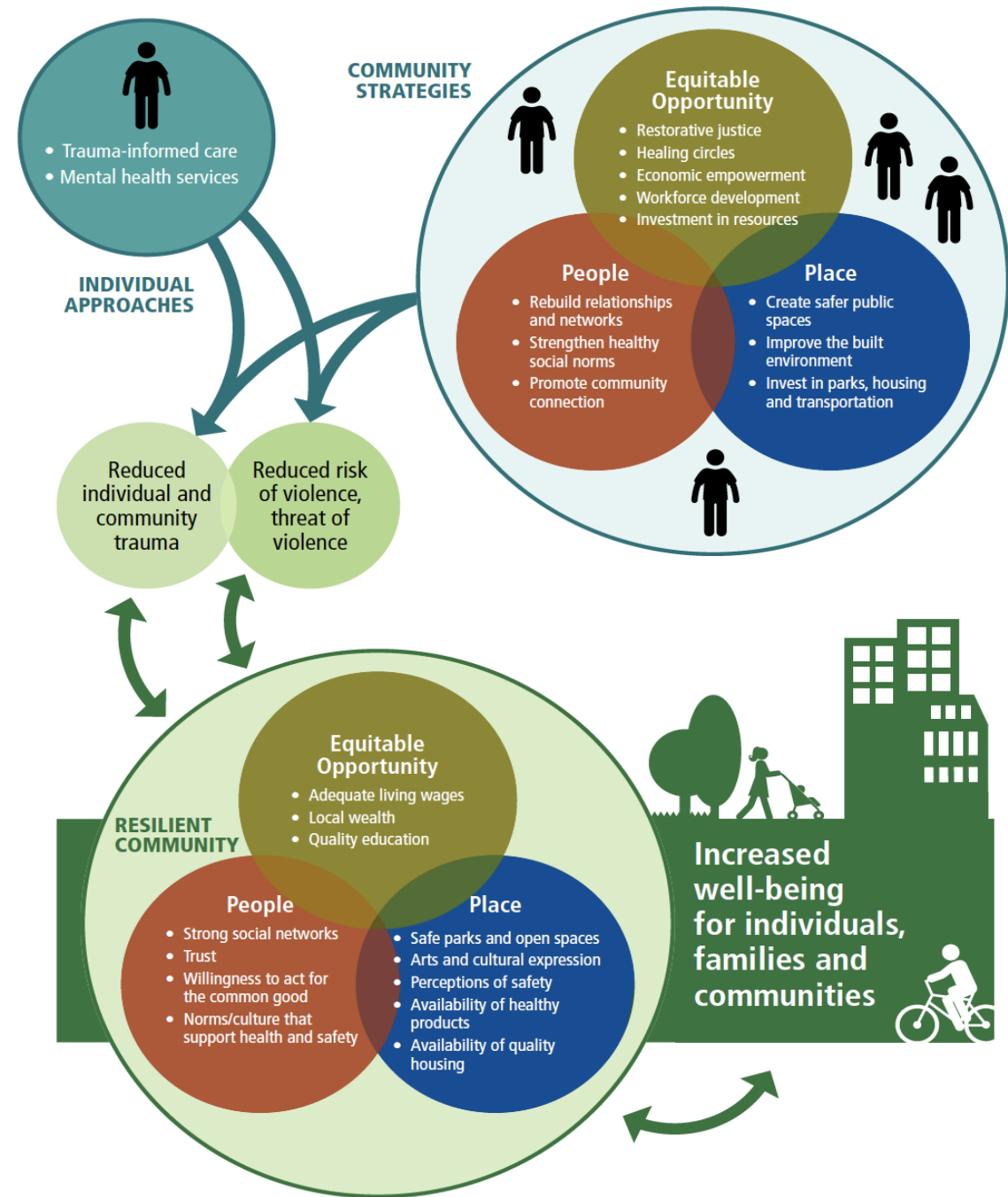
3. SUPPORT CHILDREN, YOUTH, AND FAMILIES

4. PROMOTE ECONOMIC OPPORTUNITY

5. FOSTER SAFE NEIGHBORHOODS

6. STRENGTHEN CAPACITY AND COORDINATION OF VIOLENCE PREVENTION EFFORTS

Figure 5 Promoting Community Resilience: From Trauma to Well-being



Blueprint		ReCast MKE	MPD	414 LIFE	Safe and Sound
		Arlington Heights	Arlington Heights		
3	Amani	Amani			Amani
2	Franklin Heights	Franklin Heights			
4	Garden Homes	Garden Homes	Garden Homes	Garden Homes	
1			Hampton Heights		
4	Harambee	Harambee	Harambee		Harambee
5	Historic Mitchell	Historic Mitchell	Historic Mitchell	Historic Mitchell/Clark Square	Historic Mitchell/Clark Square
1			Lincoln Creek		
4	Lincoln Village	Lincoln Village	Lincoln Village	Lincoln Village	
3		Metcalf Park	Metcalf Park		Metcalf
2		Midtown			Midtown
4	North Division	North Division	North Division		North Division
5	Old North Milwaukee	Old North Milwaukee	Old North Milwaukee	Old North Milwaukee	Old North Milwaukee
1			Park West		
4	Sherman Park	Sherman Park	Sherman Park		Sherman Park
2	Silver Spring	Silver Spring			Silverspring/Westlawn
2		Walkers Point	Walkers Point		
3		Washington Park	Washington Park		Washington Park

MILESTONES

Incident Type	2015	2016	2017	2018	2019	YTD 2020
Homicides	146	139	119	99	97	139
Non-Fatal Shootings	633	555	558	476	452	518

70% increase in homicides and non-fatal shootings

Trauma Response Team (TRT) Launched in MPD D7

City of Milwaukee Expands Office of Violence Prevention

Murder of Sylville Smith & Sherman Park Unrest

Planning Process Launched to Develop Blueprint for Peace

Blueprint for Peace Development

Expansion of TRT to MPD D5

Blueprint for Peace Launched

Expansion of Be the Change Program

TRT Expanded to MFD

ReCAST MKE Safe Summer MKE Funding Pilot Launched

Launch of 414 LIFE

Sterling Brown Incident

Gun Violence Prevention Media & Billboard Campaign Launched

Coaching Boys to Men Pilot Launched

414 LIFE Hospital Partnership Established with Froedtert and Ascension Health

Cardiff Milwaukee Launched

1st DV/SA Prev. Conference

Expansion of Safe Visitation and Exchange Services

100% increase in homicides and 70% in non-fatal shootings.

3 mass shootings

Covid 19

Murders of George Floyd and Breonna Taylor

Office of Violence Against Women Grant

Build Health Challenge





ENGAGEMENT



PRIORITY SECTORS

1. Public Policy
2. Business
3. Labor/Employment
4. Philanthropy
5. Advocacy/Justice
6. Criminal Justice
7. Juvenile Justice
8. Public Health
9. Health Care
10. Higher Education
11. Media
12. After School
13. K-12 Education
14. Faith
15. Arts & Culture
16. Family and Social – Services/Treatment
17. Mental Health
18. Parks and Recreation
19. Youth
20. Adults
21. Homeless
22. Aging
23. Early Childhood
24. Housing
25. Transportation

INVESTMENT

- ❖ Over \$4 Million in funding to community based organizations focused on mental health, trauma prevention, and healing via ReCast Milwaukee
- ❖ Over \$600K for City-County Trauma Response Partnership (2015-2020)
- ❖ National funding from Google, Everytown, Public Welfare Foundation, and Annie E. Casey Foundation
- ❖ \$500K allocated from City for implementation of 414 LIFE
- ❖ National BUILD Health Challenge Grant Award for Sherman Park Blueprint implementation
- ❖ Justice for Families grant for expansion of DV/SA prevention
- ❖ Office of Violence Against Women Grant from DOJ


IMPLEMENTATION

	GOAL 1	GOAL 2	GOAL 3	GOAL 4	GOAL 5	GOAL 6
Strategy	100%	95%	75%	75%	90%	95%
Priorities for 2021	<p>Expand public engagement and outreach in priority neighborhoods.</p> <p>Increase DV intervention and suicide prevention</p>	<p>Strengthen partnership with county and community mental health providers.</p> <p>Support substance abuse prevention efforts</p>	<p>Expand coordination for trauma prevention, youth engagement, and family violence prevention</p>	<p>Strengthen policy advocacy for living wage employment, access to capital for economic development, and reduce barriers to employment</p>	<p>Support neighborhood-level leadership for Blueprint implementation</p>	<p>Increase capacity Building for community-based organizations and cross-sector partnerships</p>

HEALTH SYSTEM to PREVENT VIOLENCE

www.violenceepidemic.org

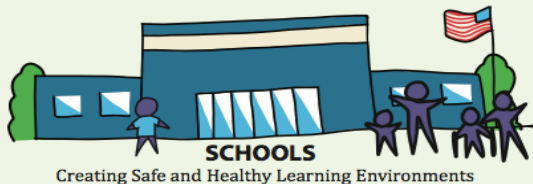
Violence is among the most significant health problems in the United States not only because of death and injury, but also because of the harm, fear, and trauma caused to families and communities. It leads to a broad range of mental and physical health problems that disproportionately impact children, youth, and communities of color. This visual representation of a health system to prevent violence is derived from the Framework created by the Violence as a Health Issue Collaborative, which is led by David Satcher, MD, MPH; Al Sommer, MD, MHS; and Gary Slutkin, MD and includes representatives from over 40 cities, 40 national organizations, and over 400 health and community practitioners. It depicts a city-wide strategy for addressing violence of all forms as the health issue that it is with contributions from every sector. This framework is designed to guide local community organizations and agencies that can be supported by federal and state partners. Coordinated implementation of these strategies with an equity lens will work to address detrimental inequities to improve outcomes for all communities.

 = Outreach workers, violence interrupters, hospital responders, and community health workers

ENSURING AN EQUITY LENS

Ensuring greater benefit and less burden for marginalized communities by:

- Changing perceptions
- Increasing accountability
- Aligning resources in partnership with communities



SCHOOLS

Creating Safe and Healthy Learning Environments



MENTAL HEALTH

Promote Accessibility for Greater Well-Being



ACADEMIC MEDICAL CENTERS

Advancing Research on Violence Prevention



FAITH-BASED INSTITUTIONS

Educating and Healing Communities



SCHOOLS OF PUBLIC HEALTH & UNIVERSITIES

Preparing Movement Leaders with Curricula and Research



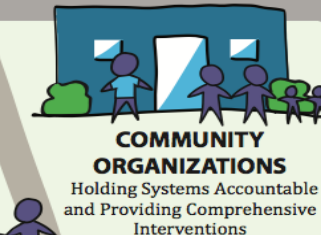
PUBLIC HEALTH DEPARTMENTS IN PARTNERSHIP WITH ELECTED OFFICIALS

Coordinating and Developing Interventions



HOSPITALS AS ANCHOR INSTITUTIONS

Ensuring Quality Care, Outreach and Follow Up



COMMUNITY ORGANIZATIONS

Holding Systems Accountable and Providing Comprehensive Interventions



COMMUNITY RESIDENTS

Leading the Local Movement



SOCIAL SERVICE PROVIDERS

Utilizing Community-Centered Practices to Address Violence



LAW ENFORCEMENT AND THE JUSTICE SYSTEM

Supporting Public Health Contributions and Ensuring Accountability Towards a Healthy/Equitable System



COMMUNITY INFORMATION SYSTEMS

Monitoring Trends of Violence Nationwide



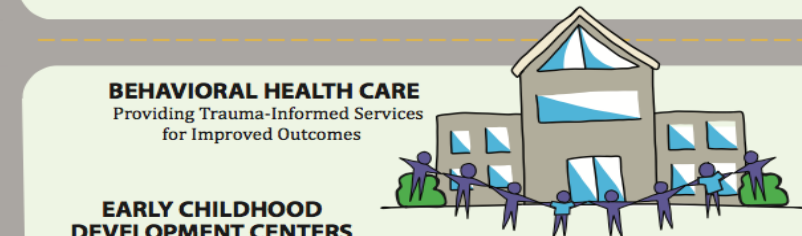
EMERGENCY DEPARTMENTS AND ACUTE CARE FACILITIES

Identifying and Supporting Individuals and Families at Risk



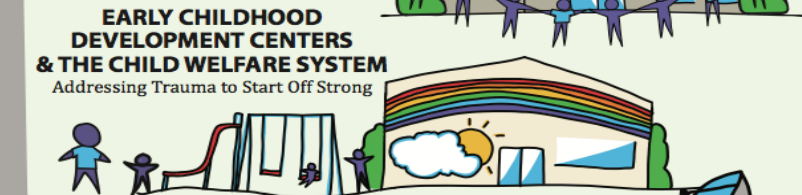
HEALTH CARE SYSTEM

Incorporating Violence Prevention in Economics and Policy



BEHAVIORAL HEALTH CARE

Providing Trauma-Informed Services for Improved Outcomes



EARLY CHILDHOOD DEVELOPMENT CENTERS & THE CHILD WELFARE SYSTEM

Addressing Trauma to Start Off Strong



PRIMARY CARE

Establishing a Safe Environment and Making Connections

MEDIA

Changing to a Health Narrative

FAMILY VIOLENCE PREVENTION

FAMILY VIOLENCE PREVENTION PROGRAMS

- ▶ The Commission on Domestic Violence and Sexual Assault
- ▶ The Milwaukee Visitation Center
- ▶ Citywide Awareness Campaigns
- ▶ Community Resource & Education Townhouses
- ▶ Coaching Boys Into Men
- ▶ The Safer Communities for Youth Program
- ▶ Resource and Technical Assistance to Grassroots Organizations
- ▶ Direct and Indirect Crisis Support

The Milwaukee Visitation Center 2016 - 2020

Supervised Visitation – 1,638

Supervised Exchanges – 2,020

Total Families Served - 293

Commission Partners

- ▶ The ASHA Project
- ▶ The Hmong American Women's Association
- ▶ The Milwaukee Women's Center
- ▶ Diverse and Resilient
- ▶ The Milwaukee Police Department
- ▶ The Human Trafficking Task Force of Greater Milwaukee
- ▶ Pathfinders
- ▶ Legal Action of Wisconsin
- ▶ The Parenting Network
- ▶ The Gerald L. Ignace Indian Health Center
- ▶ LGBT Community Center
- ▶ District Attorney's Office
- ▶ The Faith Community
- ▶ The Black Health Coalition
- ▶ Milwaukee Muslim Women's Coalition
- ▶ Sojourner Family Peace Center
- ▶ United Way
- ▶ UMOS
- ▶ Aurora Healing & Advocacy
- ▶ Jewish Family Services
- ▶ First Judicial
- ▶ Department of Corrections
- ▶ Milwaukee Public School Systems
- ▶ Department of Children and Families
- ▶ UW – Milwaukee
- ▶ Veterans Affairs
- ▶ Department on Aging
- ▶ Marquette University

Challenges

- ▶ 24 total homicides in 2019 including domestic violence related incidents.
- ▶ This year as of June – 17 domestic violence homicides & 26 domestic violence related homicides.
- ▶ 28% more domestic violence calls to the Milwaukee Police Department in 2020.
- ▶ Trend in new domestic violence incidents. No system history.
- ▶ System redesign & emergency protocols for virtual program services.
- ▶ Decrease in shelter beds and community fear of going to shelters.
- ▶ Victims are distanced from system & community supports.
- ▶ Lack of cultural responsiveness and inclusion.

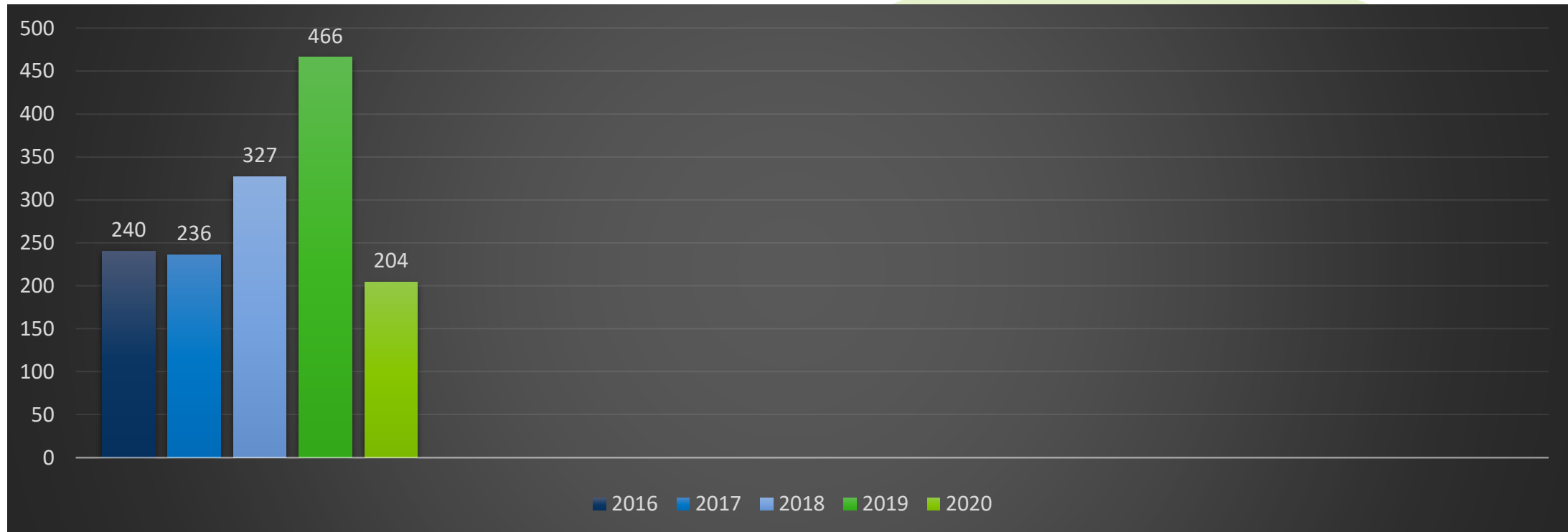
The Milwaukee Safer Communities for Youth Program

- ▶ 3-Year grant awarded through the Office of Violence Against Women. (OVW)
- ▶ The Project is a collaboration among the City of Milwaukee Office of Violence Prevention, together with UMOS, and Fresh Start Learning.
- ▶ The focus of the grant is to increase the response to domestic violence, dating violence, sexual assault and stalking among youth ages 11 to 24.
- ▶ The goal is to significantly increase the access youth have to prevention programming that is inclusive of youth-led strategies, assists youth in understanding and recognizing abusive behavior, and addresses bystander intervention.

TRAUMA RESPONSE PARTNERSHIP

TRAUMA RESPONSE REFERRALS BY YEAR

2016	2017	2018	2019	2020
240	236	327	466	204 – to date



TOP INCIDENTS

	2015	2016	2017	2018	2019
#1	Domestic Violence	Battery	Domestic Violence	Domestic Violence	Domestic Violence
#2	Battery	Domestic Violence	Battery	Child Abuse	Child Abuse
#3	Shooting	Shooting	Child Abuse	Sexual Assault	Battery
#4	Home Invasion	Robbery	Shooting	Shooting	Sexual Assault
#5	Sexual Assault	Sexual Assault	Robbery	Robbery	Endangering Safety

REFERRAL DISPOSITION

	Services Provided	Information Declined	Unable to Contact
2017	93 (39%)	39 (17%)	104 (44%)
2018	118 (36%)	64 (20%)	145 (44%)
2019	272 (58%)	22 (.05%)	172 (37%)

COMMUNITY ENGAGEMENT 2020

- ❖ Provided Grief Support at Nova High School with the OVP and the MPS mobile team
- ❖ Provided Grief Support with OVP at the Molson Coors facility for employees and their families after the mass shooting
- ❖ Conducted presentations at the Miracle Mental Health and the Milwaukee County Overdose Committee meetings
- ❖ Team members successfully obtained Trauma Counseling Certificates

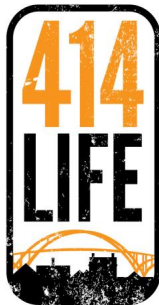
414 LIFE

414 LIFE APPROACH

- ❖ GUN VIOLENCE PREVENTION OUTREACH
- ❖ CONFLICT MEDIATION & DE-ESCALATION
- ❖ HOSPITAL RESPONSE
- ❖ COMMUNITY ENGAGEMENT & HEALING

INTERVENTION DATA

Activity	Definition	Status
Violence Interruption/Mediation	Credible conflicts with high risk for violence or retaliation	127 (53 in 2020)
Case Management	High risk individuals receiving case management services from 414 LIFE (29 Adults and 16 Youth)	45
Hospital Response	Violence Interrupter/Hospital Responder provides support to family and gun violence survivor(s) in healthcare facility	389



414 LIFE COMMUNITY ENGAGEMENT

- ❖ 14 community workshops/restorative justice circles
- ❖ 36 Gun violence prevention workshops in schools (Obama, NOVA, Assata, Marshall, Washington, Dr. King Elementary)
- ❖ 10 “Pop Up” events in priority neighborhoods
- ❖ 2 community peace rallies

CHALLENGES

- ❖ Covid-19
- ❖ Increase in spontaneous acts of gun violence (ex. road rage)
- ❖ Increasing levels of family and domestic violence
- ❖ 300% increase in state gun purchases in March 2020
- ❖ Capacity to respond to increasing demands for support across the city
- ❖ Mental health support for community

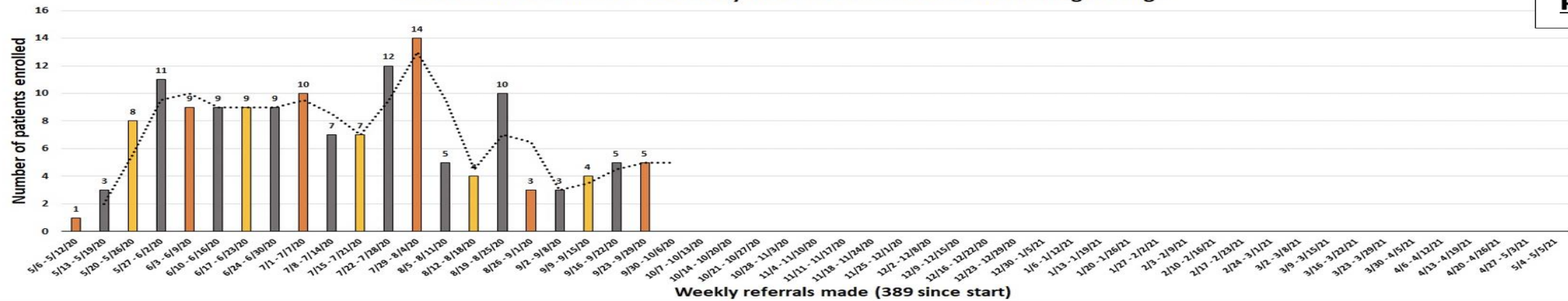
414 LIFE HOSPITAL RESPONSE

PY2 414LIFE Program Metrics (N=148)

The weekly average for PY2 is 7. PY1 had an average of 5 (technically 4.5). This time last year we were at $N = 90$, this year we are at $N = 148$, which is a 57.4% increase. There are 389 referrals since program start on May 6, 2019.

PY2

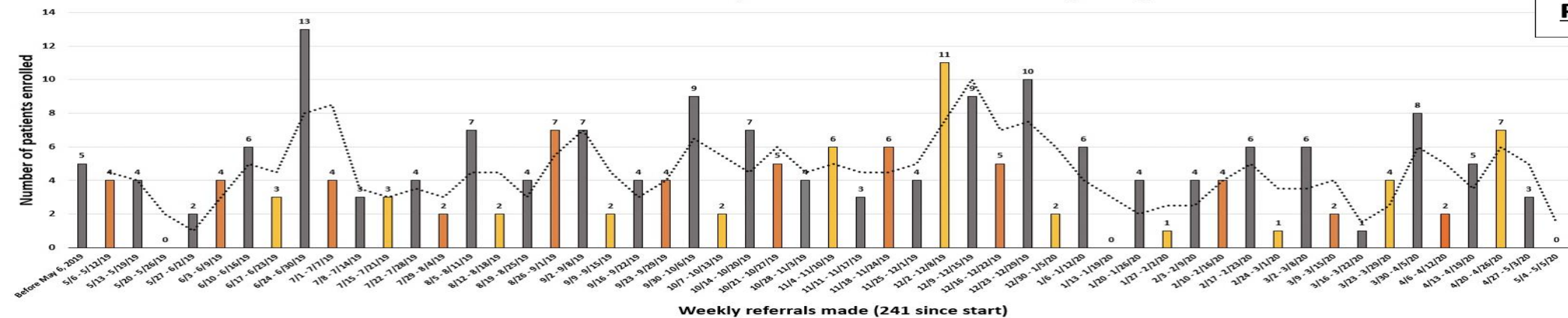
of Patients Enrolled in 414LIFE by Week Since Initiation with Moving Average



Weekly referrals made (389 since start)

of Patients Enrolled in 414LIFE by Week Since Initiation with Moving Average

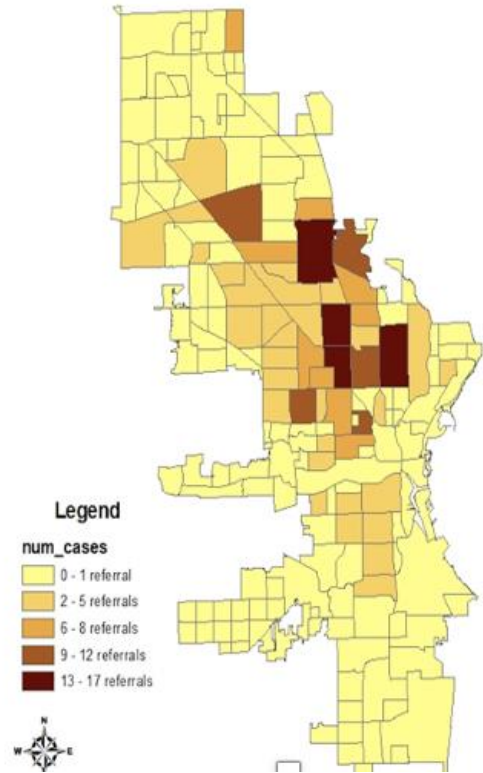
PY1



Weekly referrals made (241 since start)

414 LIFE REFERRALS BY NEIGHBORHOOD

Density of 414LIFE Referrals by Injury Location



Top 10	Neighborhood	Number of Referrals
1	HARAMBEE*	17
2	OLD NORTH MILWAUKEE*	16
3	PARK WEST	16
4	FRANKLIN HEIGHTS*	14
5	WASHINGTON PARK	12
6	KING PARK	10
7	NORTH DIVISION*	10
8	LINCOLN PARK	9
9	SILVER SPRING*	9
10	ARLINGTON HEIGHTS	8

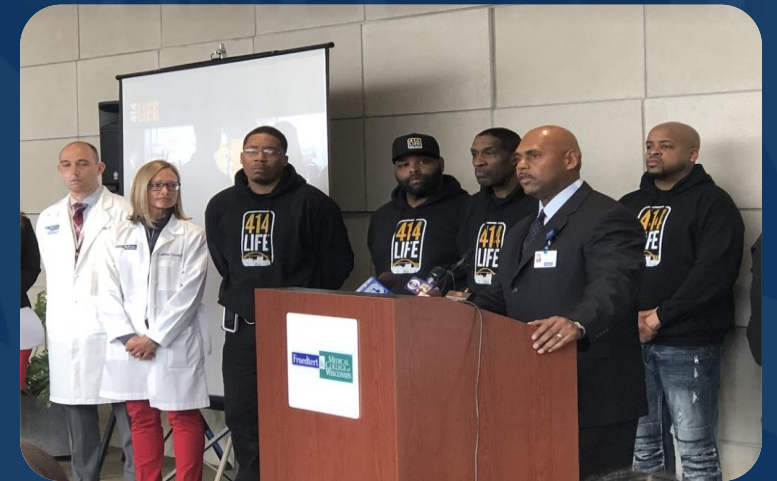
HOSPITAL REFERRALS

- ❖ **389** PATIENTS REFERRED TO 414 LIFE (MAY 2019 - SEPTEMBER 2020)
- ❖ **82%** MALE
- ❖ **87%** AFRICAN AMERICAN
- ❖ **75%** VICTIMS ARE AGES 15-35
- ❖ **57.4%** INCREASE IN REFERRALS YTD (2019 VS. 2020)



HOSPITAL ENGAGEMENT

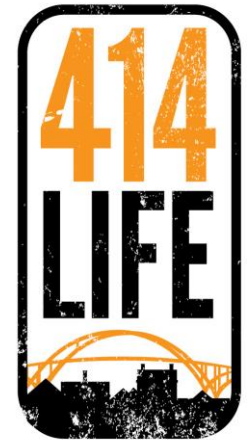
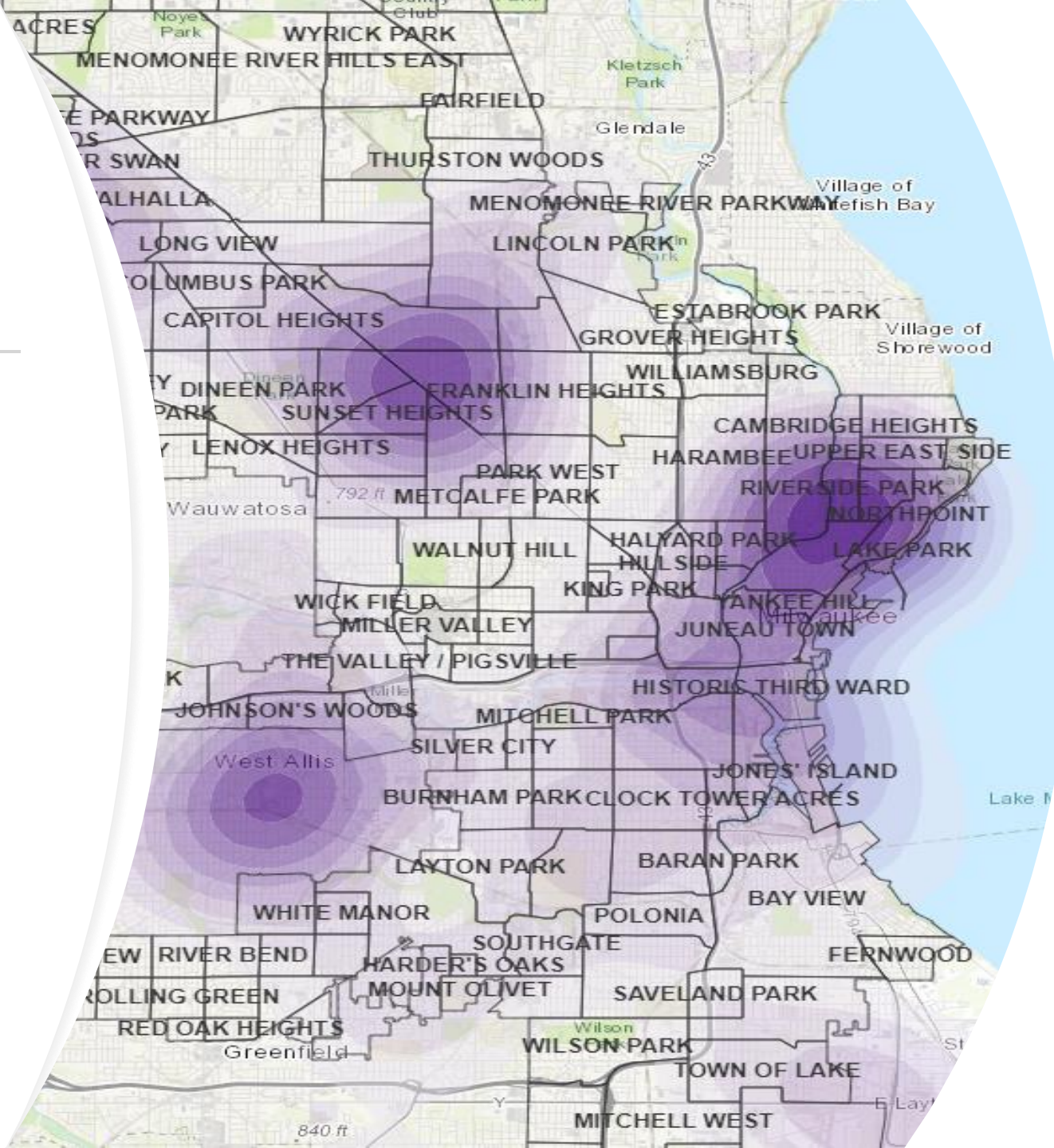
- ❖ Faculty
- ❖ Social Work
- ❖ Physicians
- ❖ Nurse Practitioners
- ❖ Psychologists
- ❖ Data analyst
- ❖ Trauma Quality of Life Clinic (Nov 2020)



Comprehensive Injury Center Strategy and Analysis Collaboration

Analyze other types of injury/non-natural death data to inform prevention and intervention

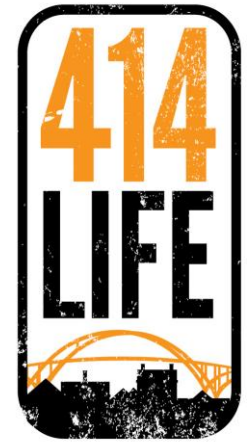
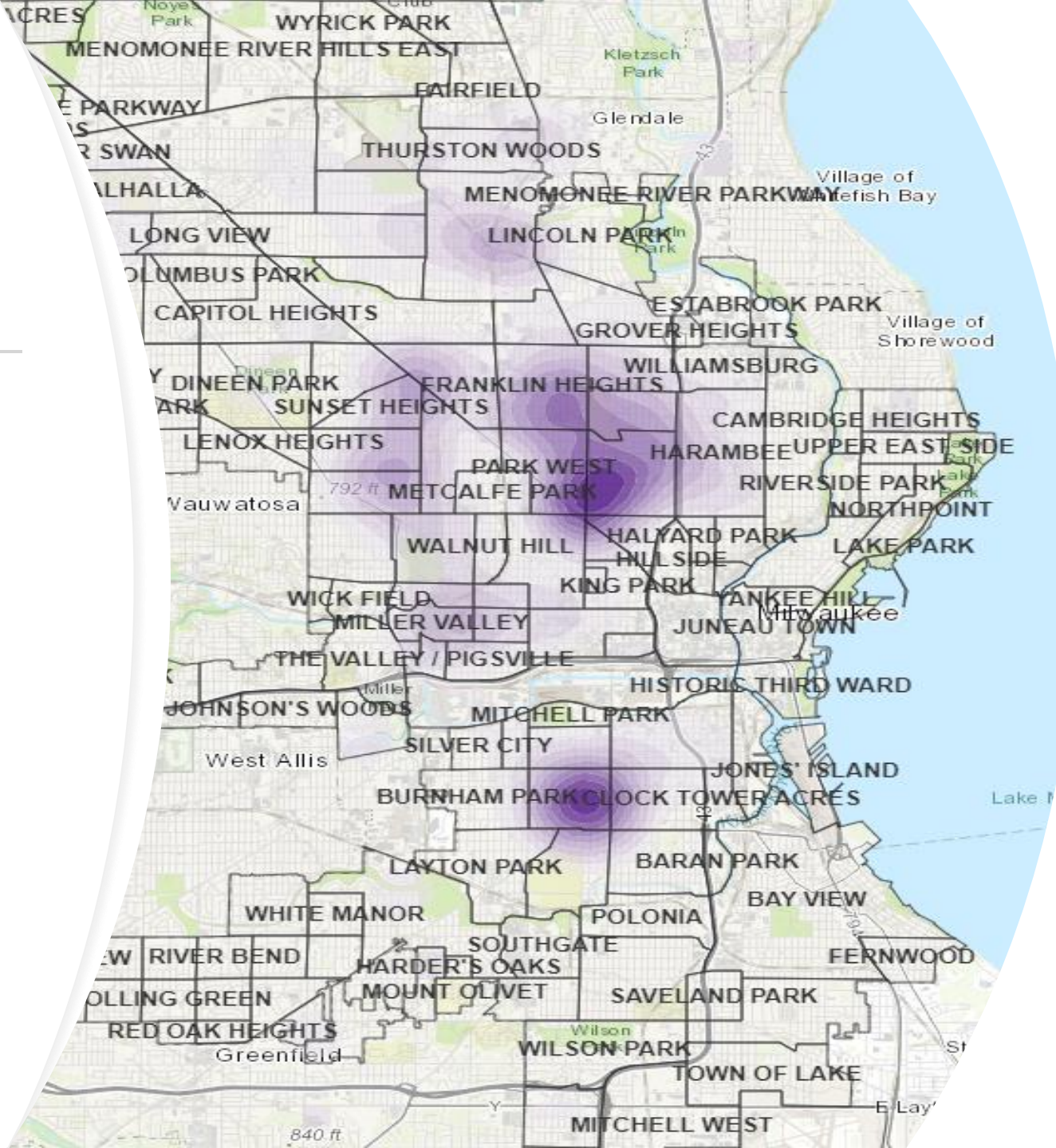
- Location
- Trends
- Asset and deficit mapping



Comprehensive Injury Center Strategy and Analysis Collaboration

Analyze other types of injury/non-natural death data to inform prevention and intervention

- Location
- Trends
- Asset and deficit mapping



The background is a solid green color. In the lower half, there is a stylized rainbow graphic composed of several overlapping, semi-transparent, curved bands of varying shades of green, creating a layered, arch-like effect.

QUESTIONS