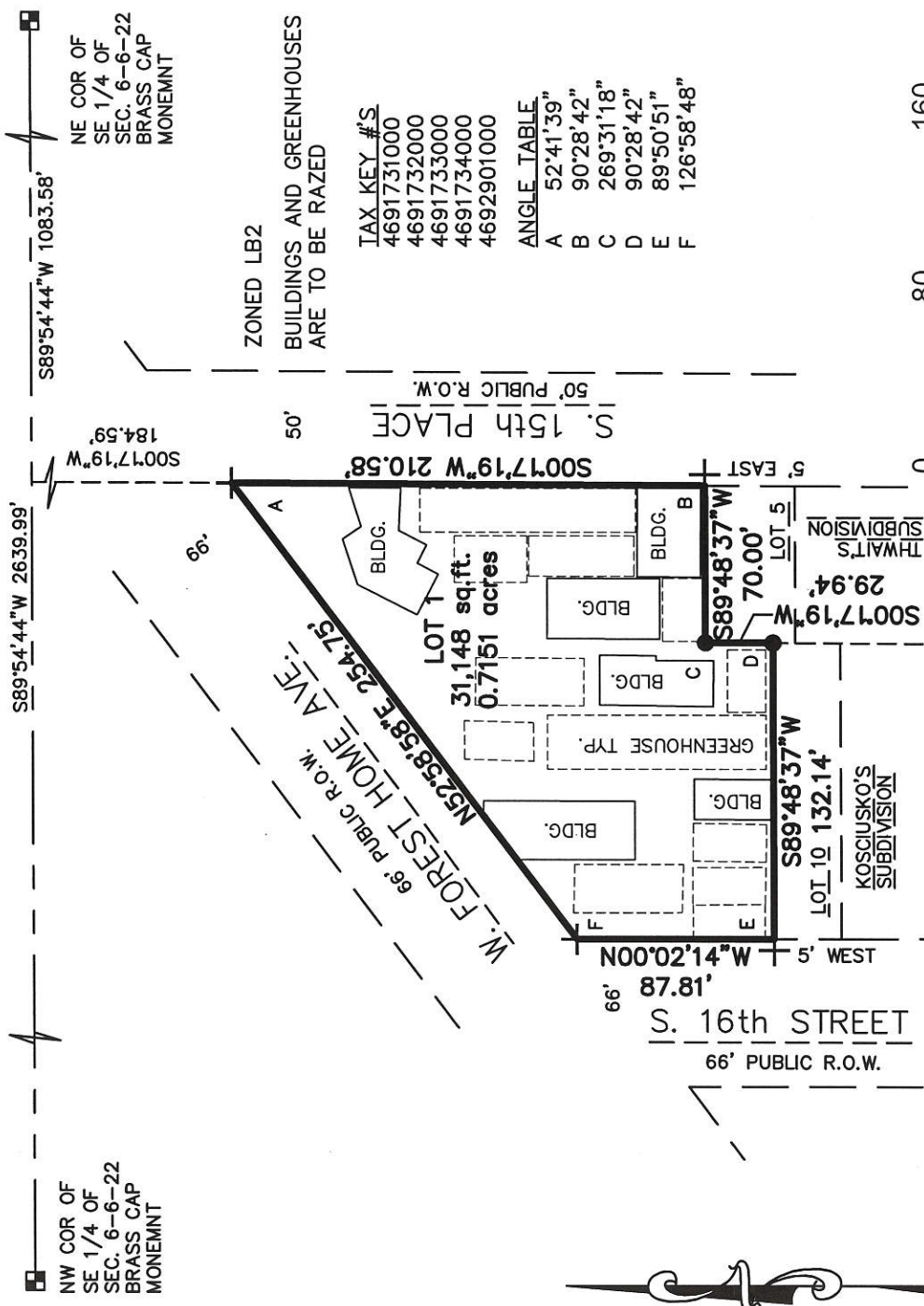


CERTIFIED SURVEY MAP NO. _____

A division of Lots 11, 12, 13, and 14, in Block 24, in Kosciusko's Subdivision and Lots 1, 2, 3 and 4 and vacated alley adjoining, in Thwait's Subdivision, all being a part of the Northeast 1/4 of the Southeast 1/4 of Section 6, Township 6 North, Range 22 East, in the City of Milwaukee, Milwaukee County, Wisconsin.

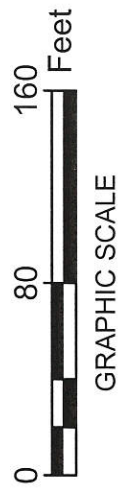
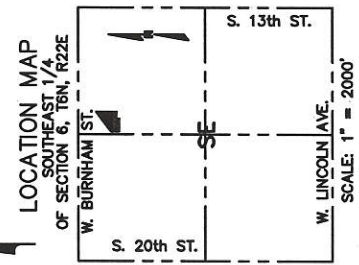
- INDICATES FOUND 1" IRON PIPE
- + INDICATES FOUND CHISELED CROSS

ALL DIMENSIONS SHOWN ARE MEASURED TO THE NEAREST HUNDREDTH OF A FOOT. ALL BEARINGS ARE REFERENCED TO THE NORTH LINE OF THE SE 1/4 OF SECTION 6, T 6 N, R 22 E, WHICH BEARS S89°54'44"W. WISCONSIN STATE PLANE COORDINATE SYSTEM, SOUTH ZONE (2016).



NW COR OF SECTION 6, T6N, R22E
 SE 1/4 OF SECTION 6-6-22
 BRASS CAP MONUMENT
 S89°54'44"W 2639.99'
 S89°54'44"W 1083.58'
 NE COR OF SECTION 6-6-22
 BRASS CAP MONUMENT
 S00°17'19"W 184.59'
 S00°17'19"W 210.58'
 S00°17'19"W 70.00'
 S89°48'37"W 132.14'
 S89°48'37"W 70.00'
 S89°48'37"W 29.94'
 S00°17'19"W 210.58'
 S00°17'19"W 70.00'
 S00°17'19"W 29.94'
 S00°17'19"W 70.00'
 S00°17'19"W 29.94'

TAX KEY #S	ANGLE TABLE
4691731000	A 52°41'39"
4691732000	B 90°28'42"
4691733000	C 269°31'18"
4691734000	D 90°28'42"
4692901000	E 89°50'51"
	F 126°58'48"



R.A. Smith National, Inc.
Beyond Surveying and Engineering

16745 W. Bluemound Road, Brookfield WI 53005
262-781-1000 Fax 262-797-7373 www.rasmithnational.com
Appleton, WI Irvine, CA Pittsburgh, PA

John P. Casucci
REV 4-28-17

S:\1669270\wg\CS101\LEWS\SHEET 1

SHEET 1 OF 4 SHEETS

INFRASTRUCTURE SERVICES DIVISION
John P. Casucci 5/3/17
 CENTRAL DRAFTING & RECORDS MANAGER
Zy Nady 5/3/2017
 ENGR. IN CHARGE ENVIRON. ENGR.
 CORRECT
[Signature]
 CITY ENGINEER APPROVED
 5/3/17

DEPARTMENT OF CITY DEVELOPMENT
CITY OF MILWAUKEE



APR 17 2017
[Signature]
 STAFF APPROVED

CERTIFIED SURVEY MAP NO. _____

A division of Lots 11, 12, 13, and 14, in Block 24, in Kosciusko's Subdivision and Lots 1, 2, 3 and 4 and vacated alley adjoining, in Thwait's Subdivision, all being a part of the Northeast 1/4 of the Southeast 1/4 of Section 6, Township 6 North, Range 22 East, in the City of Milwaukee, Milwaukee County, Wisconsin.

COMMON COUNCIL CERTIFICATE OF APPROVAL

I certify that this Certified Survey Map was approved under Resolution File No. 170273, adopted by the Common Council of the City of Milwaukee on May 31, 2017.


JAMES OWCZARSKI, CITY CLERK

TOM BARRETT, MAYOR

CERTIFICATE OF CITY TREASURER

STATE OF WISCONSIN }
 :SS
MILWAUKEE COUNTY }

I, SPENCER COGGS, being the duly elected, qualified and acting City Treasurer of the City of Milwaukee, certify that in accordance with the records in the office of the City Treasurer of the City of Milwaukee there are no unpaid taxes or unpaid special assessments on the land included in this Certified Survey Map.

6/5/17
DATE

SPENCER COGGS, CITY TREASURER

