

2025-7-15

# MCTS Proposed Bus Stop Locations City of Milwaukee July 2025

Recommended by the Transit Stop Technical Advisory Committee



**Tom Bertrand**  
Transit Planner  
414-343-4550 ext. 1726  
[tbertrand@mcts.org](mailto:tbertrand@mcts.org)

|                   |   |
|-------------------|---|
| Bus Stop ID #9735 | 17 <sup>th</sup> & Wisconsin farside (43.038131410085185, -87.93424420636218) |
|-------------------|---|



|                             |  |
|-----------------------------|--|
| Routes                      | 14   |
| Reason for New Location     | New layover location for 14 which has been extended west.          |
| Distance from previous stop | 577 ft from 16 <sup>th</sup> & Wisconsin WB                        |
| Distance to following stop  | 2,617 ft to 16 <sup>th</sup> & Wisconsin EB                        |
| Parking Impacts             | No. MCTS will use existing space.                                  |
| Mobility/Accessibility      | ADA pad exists at this proposed stop.                              |
| Pedestrian Safety           | Sidewalk access. Traffic lights and crosswalks near Wisconsin Ave. |
| County Supervisor           | Dist. 10 – Marcelia Nicholson                                      |
| City Alderperson            | Dist. 4 – Robert Bauman  |

|                   |   |
|-------------------|---|
| Bus Stop ID #4394 | Prospect & Mason northbound (43.040804, -87.899176) |
|-------------------|---|



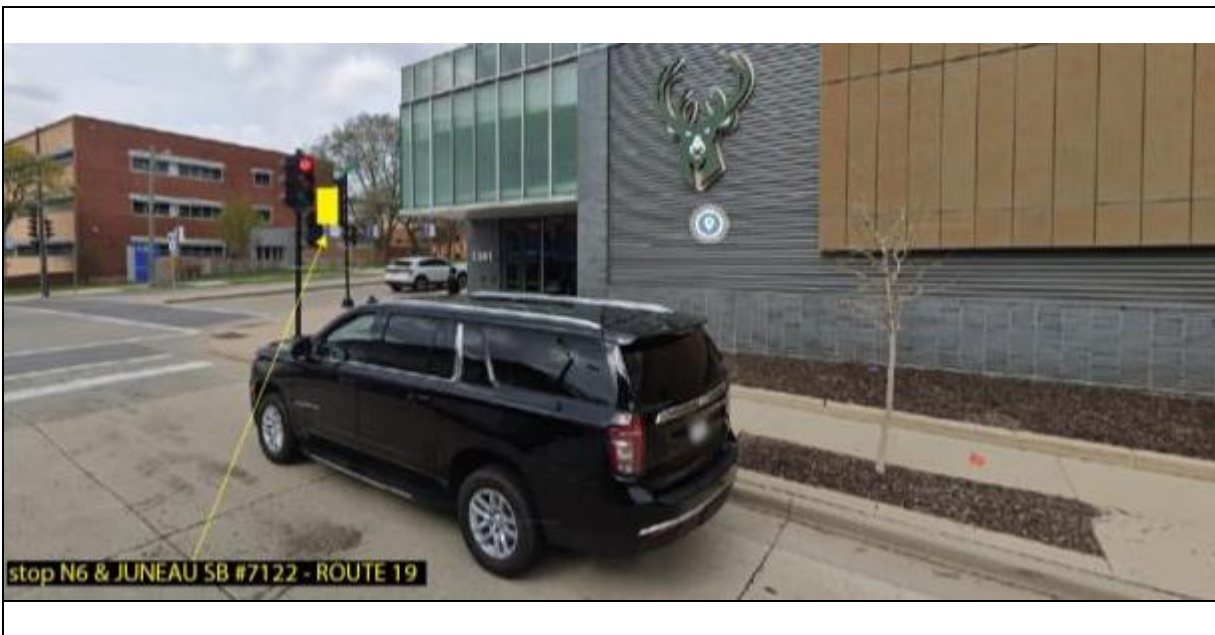
|                             |  |
|-----------------------------|--|
| Routes                      | 14   |
| Reason for New Location     | New routing for Route 14 uses Prospect Ave northbound. |
| Distance from previous stop | 1,476 feet from Wisconsin and Cass.                    |
| Distance to following stop  | 1,149 ft to Prospect and State.                        |
| Parking Impacts             | No. MCTS will use existing space.                      |
| Mobility/Accessibility      | ADA pad exists at this stop.                           |
| Pedestrian Safety           | Sidewalk access. Traffic lights and crosswalks nearby. |
| County Supervisor           | Dist. 3 – Sheldon A. Wasserman                         |
| City Alderperson            | Dist. 4 – Robert Bauman                                |

|                   |  |
|-------------------|--|
| Bus Stop ID #7721 | 6 <sup>th</sup> & Juneau northbound nearside (43.045523, -87.918750) |
|-------------------|--|



|                             |   |
|-----------------------------|---|
| Routes                      | 19, RR1   |
| Reason for New Location     | New stop for Routes 19 & RR1, which will now use McKinley to travel between 6 <sup>th</sup> & MLK. Northbound stop provides access to arena and surrounding area. |
| Distance from previous stop | 400 feet from 6 <sup>th</sup> & Highland.   |
| Distance to following stop  | 1,400 ft to MLK & Juneau.   |
| Parking Impacts             | NO PARKING bus stop sign needed.  |
| Mobility/Accessibility      | Curb ramp and ADA pads exist.   |
| Pedestrian Safety           | Crosswalks on all nearby intersections and immediate sidewalk access. Traffic lights exist.   |
| County Supervisor           | Dist. 3 – Sheldon A. Wasserman  |
| City Alderperson            | Dist. 4 – Robert Bauman   |

|                   |  |
|-------------------|--|
| Bus Stop ID #7122 | 6 <sup>th</sup> & Juneau Southbound nearside (43.045930, -87.919067) |
|-------------------|--|



|                             |   |
|-----------------------------|---|
| Routes                      | 19, RR1   |
| Reason for New Location     | New stop for Routes 19 & RR1, which will now use McKinley to travel between 6 <sup>th</sup> & MLK. Southbound stop provides access to arena and surrounding area. |
| Distance from previous stop | 1,610 feet from Prospect and Mason.   |
| Distance to following stop  | 550 ft to 6 <sup>th</sup> & Highland.   |
| Parking Impacts             | NO PARKING bus stop sign needed.  |
| Mobility/Accessibility      | Curb ramp and ADA pad exists.   |
| Pedestrian Safety           | Crosswalks on all nearby intersections and immediate sidewalk access. Traffic lights nearby.  |
| County Supervisor           | Dist. 13 – Priscilla E. Coggs-Jones   |
| City Alderperson            | Dist. 4 – Milele A. Coggs   |

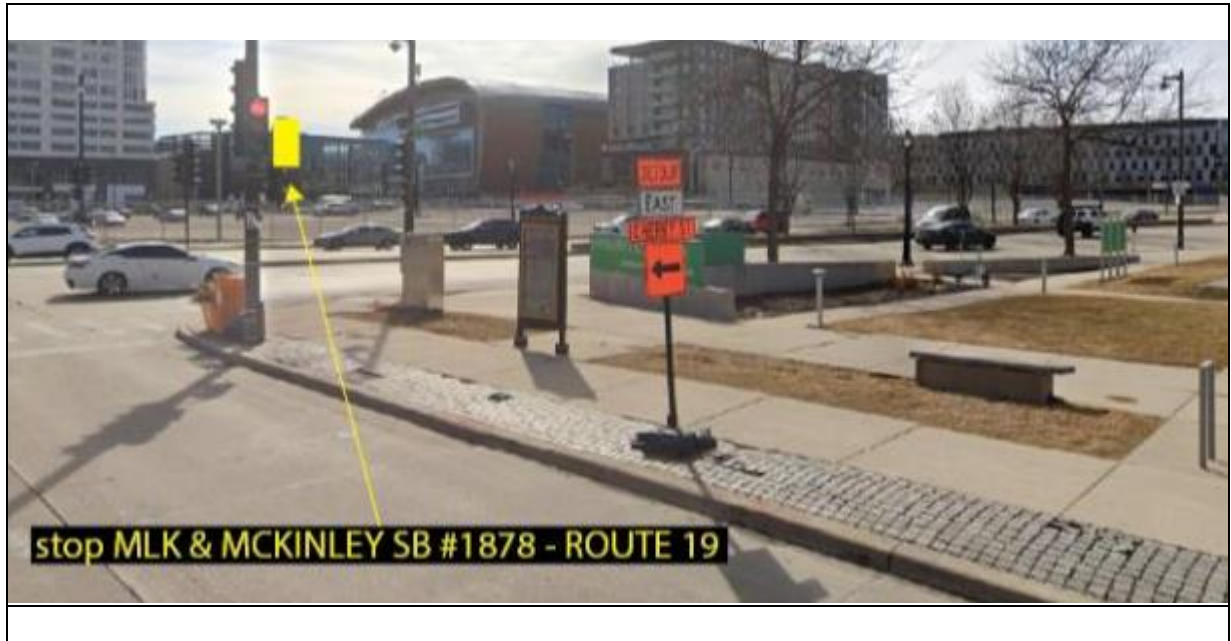


|                   |   |
|-------------------|---|
| Bus Stop ID #2246 | MLK & McKinley Northbound farside (43.047019, -87.914304) |
|-------------------|---|



|                             |   |
|-----------------------------|---|
| Routes                      | 19, RR1   |
| Reason for New Location     | New stop for Routes 19 & RR1, which will now use McKinley to travel between 6th & MLK. Northbound stop provides increased access to this intersection and surrounding area. |
| Distance from previous stop | 1,861 feet from 6th & Juneau  |
| Distance to following stop  | 450 feet to MLK & Vliet   |
| Parking Impacts             | NO PARKING bus stop sign needed.  |
| Mobility/Accessibility      | Curb ramps at intersections nearby. ADA landing pads exists.  |
| Pedestrian Safety           | Crosswalks on all nearby intersections and immediate sidewalk access. Traffic lights nearby.  |
| County Supervisor           | Dist. 13 – Priscilla E. Coggs-Jones   |
| City Alderperson            | Dist. 4 – Milele A. Coggs   |

|                   |  |
|-------------------|--|
| Bus Stop ID #1878 | MLK & McKinley Southbound nearside (43.046913, -87.914506) |
|-------------------|--|



|                             |   |
|-----------------------------|---|
| Routes                      | 19, RR1   |
| Reason for New Location     | New stop for Routes 19 & RR1, which will now use McKinley to travel between 6 <sup>th</sup> & MLK. Southbound stop provides increased access to this intersection and surrounding area. |
| Distance from previous stop | 608 feet from MLK & Vliet.  |
| Distance to following stop  | 1,673 feet to 6 <sup>th</sup> & Juneau.   |
| Parking Impacts             | NO PARKING bus stop sign already exists.  |
| Mobility/Accessibility      | Curb ramp and ADA pad exists. Pavers at bus boarding location.  |
| Pedestrian Safety           | Crosswalks on all nearby intersections and immediate sidewalk access. Traffic lights nearby.  |
| County Supervisor           | Dist. 13 – Priscilla E. Coggs-Jones   |
| City Alderperson            | Dist. 6 – Milele A. Coggs   |

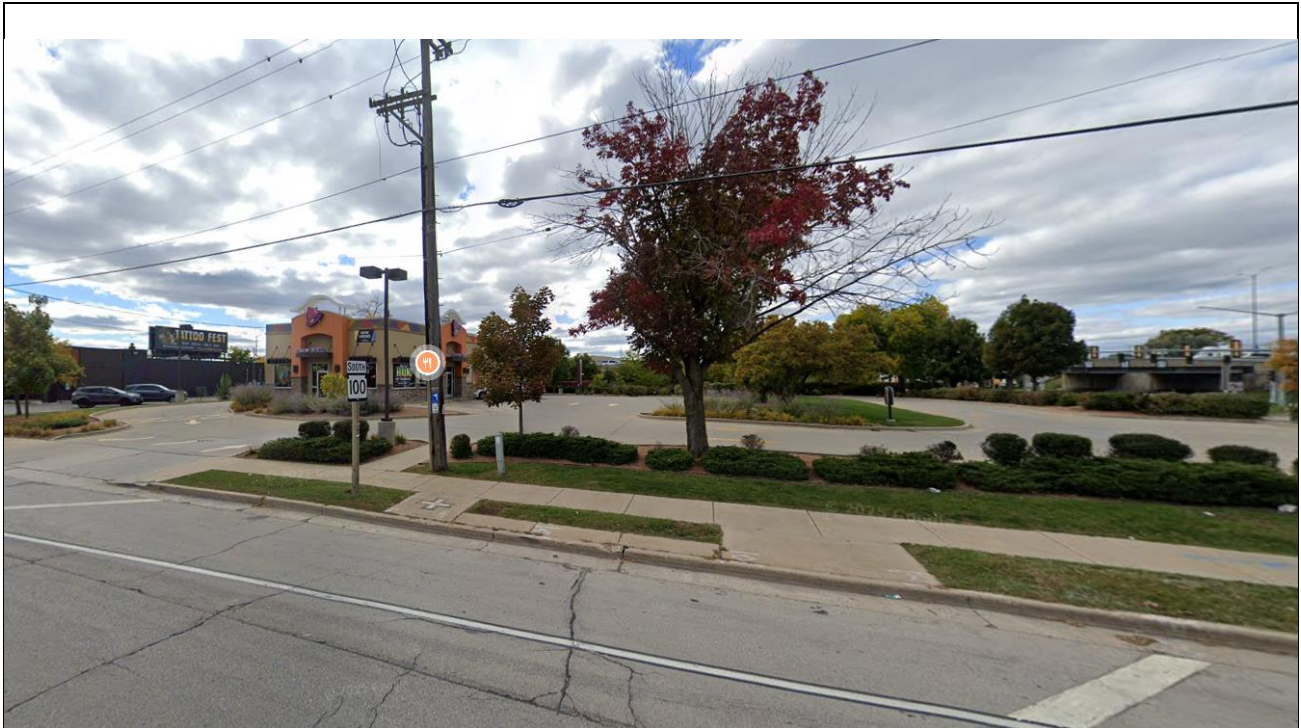
|                   |   |
|-------------------|---|
| Bus Stop ID #9736 | Edgerton & S. 27 <sup>th</sup> nearside (42.952060, -87.948362) |
|-------------------|---|



|                             |   |
|-----------------------------|---|
| Routes                      | 20  |
| Reason for New Location     | New Route 20 lays over at this location, which also allows for restroom access for drivers. |
| Distance from previous stop | 2,028 feet from 27 <sup>th</sup> & Barnard.   |
| Distance to following stop  | 3,440 feet to 20 <sup>th</sup> & Halsey.  |
| Parking Impacts             | No parking sign exists. No parking bus stop sign needed.                                    |
| Mobility/Accessibility      | Curb ramp and ADA pad exists.   |
| Pedestrian Safety           | Crosswalks on all nearby intersections. Traffic lights nearby.                              |
| County Supervisor           | Dist. 4 – Jack Eckblad  |
| City Alderperson            | Dist. 13 – Scott Spiker   |

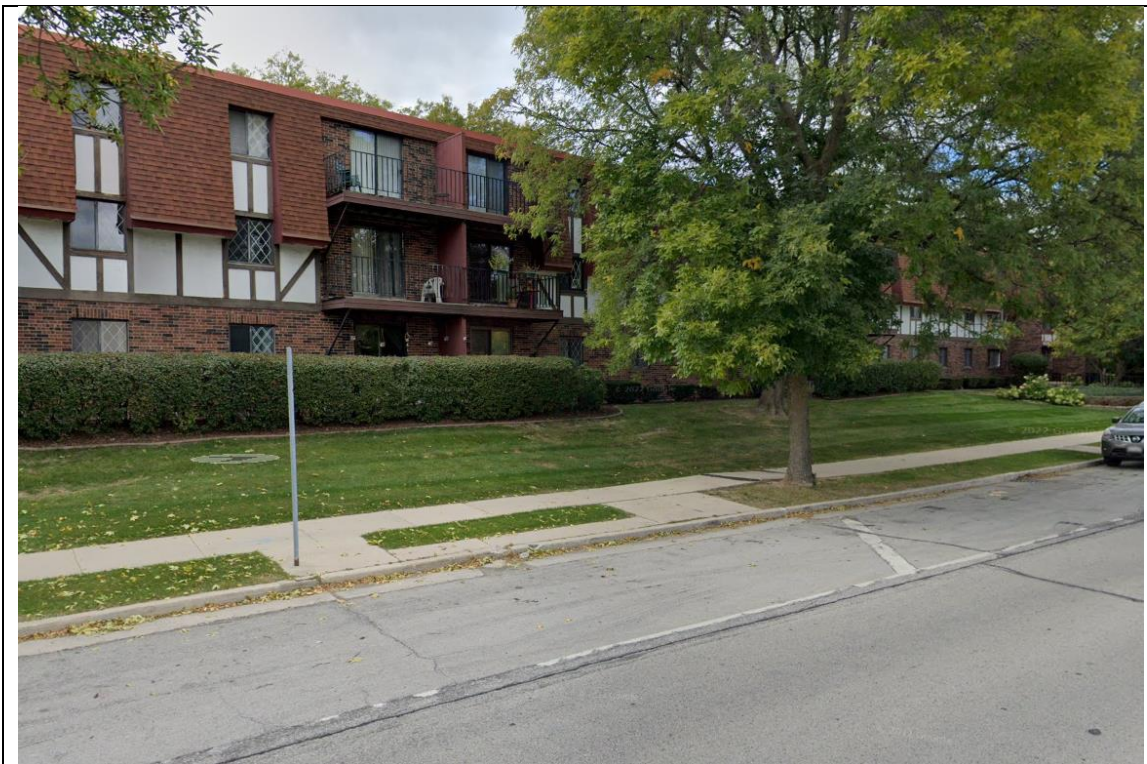


|                   |  |
|-------------------|--|
| Bus Stop ID #9743 | Lovers Lane & Silver Spring Southbound farside (43.116626, -88.055897) |
|-------------------|--|



|                             |  |
|-----------------------------|--|
| Routes                      | 28   |
| Reason for New Location     | New southbound routing for Route 28 travels through this intersection, requiring a new stop farside at a former stop location. |
| Distance from previous stop | 806 feet from the previous nearside stop.  |
| Distance to following stop  | 1,512 feet to the next stop at 5200 N. Lovers Lane.  |
| Parking Impacts             | NO PARKING bus stop sign needed.   |
| Mobility/Accessibility      | ADA pads present.  |
| Pedestrian Safety           | Crosswalks on all nearby intersections and immediate sidewalk access. Traffic lights nearby.                                   |
| County Supervisor           | Dist. 18 – Deanna Alexander  |
| City Alderperson            | Dist. 5 – Lamont Westmoreland  |

|                   |  |
|-------------------|--|
| Bus Stop ID #9744 | Lovers Lane & N5200 Southbound mid-block (43.112490, -88.055913) |
|-------------------|--|



|                             |  |
|-----------------------------|--|
| Routes                      | 28   |
| Reason for New Location     | New southbound routing for Route 28 from Silver Spring to Hampton, requiring a stop halfway between the two to capture ridership from the local residents. |
| Distance from previous stop | 1,494 feet from Lovers Lane and Silver Spring.   |
| Distance to following stop  | 2,855 ft to Lovers Lane & Highland.  |
| Parking Impacts             | NO PARKING bus stop sign needed.   |
| Mobility/Accessibility      | ADA pads exist   |
| Pedestrian Safety           | Immediate sidewalk access.   |
| County Supervisor           | Dist. 18 – Deanna Alexander  |
| City Alderperson            | Dist. 5 – Lamont Westmoreland  |

|                   |   |
|-------------------|---|
| Bus Stop ID #9742 | Florist & 3300 W. mid-block (43.126442, -87.953252) |
|-------------------|---|



|                             |   |
|-----------------------------|---|
| Routes                      | 30  |
| Reason for New Location     | Route 30 has been re-routed to lay over at this location, providing more adequate restroom access to bus drivers at the nearby Citgo gas station. |
| Distance from previous stop | 700 feet from Florist & 35 <sup>th</sup> .  |
| Distance to following stop  | 300 feet to Florist & Teutonia.   |
| Parking Impacts             | NO PARKING bus stop sign needed.  |
| Mobility/Accessibility      | No ADA Pad. Sidewalk does exist.  |
| Pedestrian Safety           | Crosswalks and traffic lights at Florist & Teutonia and immediate sidewalk access.  |
| County Supervisor           | Dist. 2 – Willie Johnson, Jr  |
| City Alderperson            | Dist. 1 – Andrea M. Pratt   |



|                  |   |
|------------------|---|
| Bus Stop ID #911 | 35 <sup>th</sup> & Florist Eastbound nearside (43.126536, -87.961080) |
|------------------|---|



|                             |   |
|-----------------------------|---|
| Routes                      | 30  |
| Reason for New Location     | New Route 30 routing uses Florist between Sherman and Teutonia, necessitating a stop at this intersection to capture local ridership and negate a gap in stops. |
| Distance from previous stop | 2,193 feet from Teutonia & Oriole.  |
| Distance to following stop  | 1,330 feet to Florist & 39 <sup>th</sup> .  |
| Parking Impacts             | NO PARKING bus stop sign needed.  |
| Mobility/Accessibility      | Curb ramp exists.   |
| Pedestrian Safety           | Sidewalk access   |
| County Supervisor           | Dist. 2 – Willie Johnson, Jr  |
| City Alderperson            | Dist. 1 – Andrea M. Pratt   |





|                  |   |
|------------------|---|
| Bus Stop ID #909 | Florist & 39th Westbound nearside (43.126537, -87.961101) |
|------------------|---|



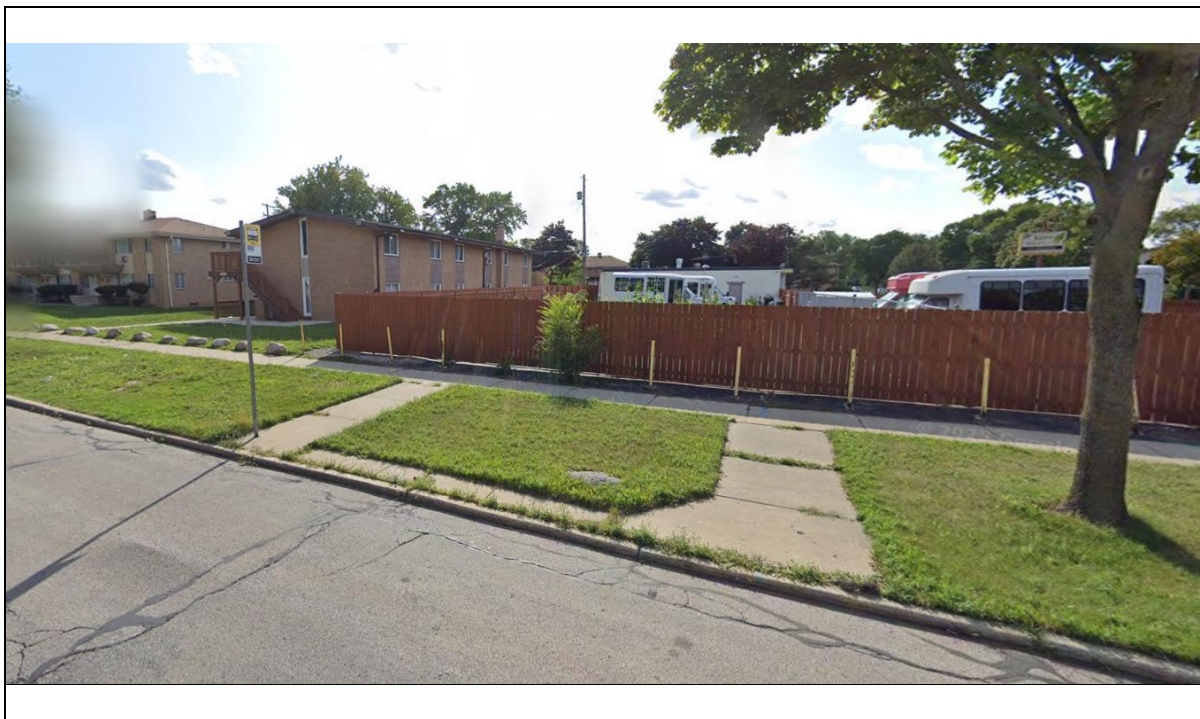
|                             |   |
|-----------------------------|---|
| Routes                      | 30  |
| Reason for New Location     | New Route 30 routing uses Florist between Sherman and Teutonia, necessitating a stop at this intersection to capture local ridership and negate a gap in stops. |
| Distance from previous stop | 1,312 feet from Sherman & Florist.  |
| Distance to following stop  | 1,456 feet to Florist & 35 <sup>th</sup> .  |
| Parking Impacts             | NO PARKING bus stop sign needed.  |
| Mobility/Accessibility      | Curb ramp exists.   |
| Pedestrian Safety           | Sidewalk access. Yield Signs in place.  |
| County Supervisor           | Dist. 2 – Willie Johnson, Jr  |
| City Alderperson            | Dist. 1 – Andrea M. Pratt   |

|                  |  |
|------------------|--|
| Bus Stop ID #827 | Florist & Sherman Eastbound nearside (43.126675, -87.965833) |
|------------------|--|



|                             |  |
|-----------------------------|--|
| Routes                      | 30, 73   |
| Reason for New Location     | New stop for Route 19, which will now use McKinley to travel between 6 <sup>th</sup> & MLK. Southbound stop provides access to arena and surrounding area. |
| Distance from previous stop | 1,456 feet from Florist & 35 <sup>th</sup> .   |
| Distance to following stop  | 2,059 feet to 43 <sup>rd</sup> & Thurston.   |
| Parking Impacts             | NO PARKING bus stop sign needed.   |
| Mobility/Accessibility      | Curb ramp and ADA pad exists.  |
| Pedestrian Safety           | Crosswalks at Florist & Sherman and sidewalk access. Traffic lights nearby.  |
| County Supervisor           | Dist. 2 – Willie Johnson, Jr   |
| City Alderperson            | Dist. 1 – Andrea M. Pratt  |

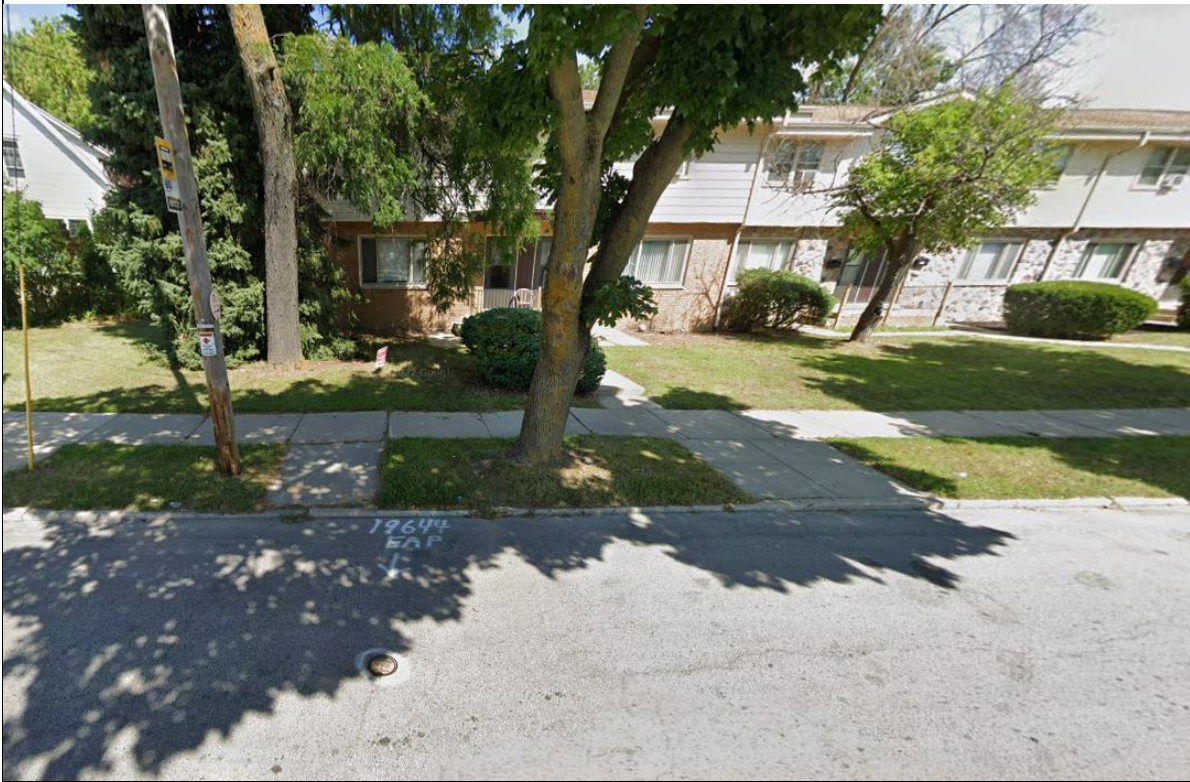
|                   |  |
|-------------------|--|
| Bus Stop ID #5691 | 84 <sup>th</sup> & Villard Westbound farside (43.111894, -88.015895) |
|-------------------|--|



|                             |   |
|-----------------------------|---|
| Routes                      | 58  |
| Reason for New Location     | Route 58 will now end at Appleton Ave, using 84 <sup>th</sup> St and Lancaster Ave to make a loop. Former bus stop. |
| Distance from previous stop | 485 feet from 83 <sup>rd</sup> & Villard  |
| Distance to following stop  | 466 feet to 84 <sup>th</sup> & Lancaster  |
| Parking Impacts             | No parking bus stop sign needed.  |
| Mobility/Accessibility      | ADA pad exists.   |
| Pedestrian Safety           | Sidewalks and crosswalks nearby.  |
| County Supervisor           | Dist. 5 – Sequanna Taylor   |
| City Alderperson            | Dist. 2 – Mark Chambers, Jr   |

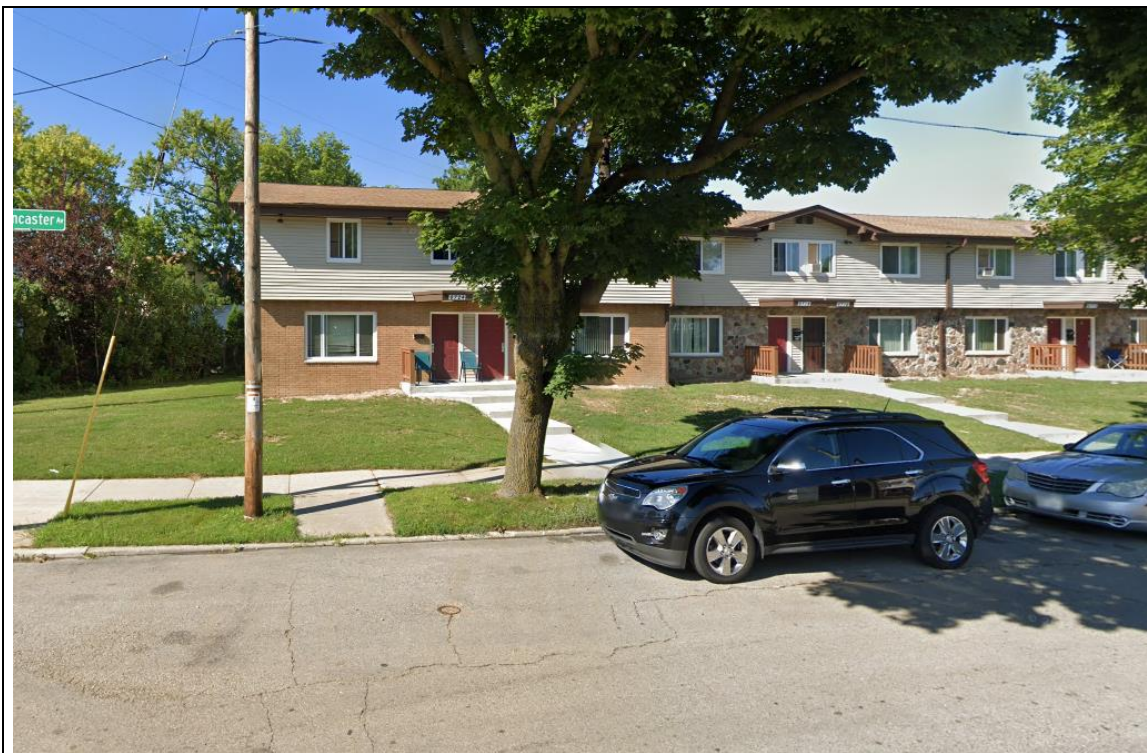


|                   |   |
|-------------------|---|
| Bus Stop ID #5692 | 84 <sup>th</sup> & Lancaster Westbound nearside (43.110628, -88.016029) |
|-------------------|---|



|                             |   |
|-----------------------------|---|
| Routes                      | 58  |
| Reason for New Location     | Route 58 will now end at Appleton Ave, using 84 <sup>th</sup> St and Lancaster Ave to make a loop. Former bus stop. |
| Distance from previous stop | 466 feet from 84 <sup>th</sup> & Villard.   |
| Distance to following stop  | 1,719 feet to Lancaster & Appleton.   |
| Parking Impacts             | No parking bus stop sign needed.  |
| Mobility/Accessibility      | ADA pad exists.   |
| Pedestrian Safety           | Sidewalks and crosswalks nearby.  |
| County Supervisor           | Dist. 5 – Sequanna Taylor   |
| City Alderperson            | Dist. 2 – Mark Chambers, Jr   |

|                   |   |
|-------------------|---|
| Bus Stop ID #5694 | Lancaster & Appleton Westbound nearside (43.110199, -88.022365) |
|-------------------|---|



|                             |   |
|-----------------------------|---|
| Routes                      | 58  |
| Reason for New Location     | Route 58 will now end at Appleton Ave, using 84 <sup>th</sup> St and Lancaster Ave to make a loop. Former bus stop. |
| Distance from previous stop | 1,719 feet from 84 <sup>th</sup> & Lancaster.   |
| Distance to following stop  | 914 feet to Villard & Appleton.   |
| Parking Impacts             | NO PARKING bus stop sign needed.  |
| Mobility/Accessibility      | ADA pad exists.   |
| Pedestrian Safety           | Sidewalk access.  |
| County Supervisor           | Dist. 5 – Sequanna Taylor   |
| City Alderperson            | Dist. 2 – Mark Chambers, Jr   |



|                   |   |
|-------------------|---|
| Bus Stop ID #8511 | Ramsey & 28 <sup>th</sup> westbound farside (42.93769506603048, -87.95045925185534) |
|-------------------|---|



|                             |  |
|-----------------------------|--|
| Routes                      | 59   |
| Reason for New Location     | New stop for Route 59 on the western end provides access to residents and senior living facilities nearby. |
| Distance from previous stop | 1,700 feet from 27 <sup>th</sup> & Kimberly  |
| Distance to following stop  | 500 ft to Ramsey & Green   |
| Parking Impacts             | NO PARKING bus stop sign needed.   |
| Mobility/Accessibility      | Curb ramp and ADA pad exists.  |
| Pedestrian Safety           | Crosswalks on all nearby intersections and immediate sidewalk access. Traffic lights nearby.               |
| County Supervisor           | Dist. 4 – Jack Eckblad   |
| City Alderperson            | Dist. 13 – Scott Spiker  |

|                   |  |
|-------------------|--|
| Bus Stop ID #3996 | Ramsey & Green westbound nearside (42.93768754705745, -87.9523840615439) |
|-------------------|--|



|                             |  |
|-----------------------------|--|
| Routes                      | 59   |
| Reason for New Location     | New stop for Route 59 on the western end provides access to residents and senior living facilities nearby. |
| Distance from previous stop | 500 feet from Ramsey & 28 <sup>th</sup>  |
| Distance to following stop  | 800 ft to Ramsey & Marilyn.  |
| Parking Impacts             | NO PARKING bus stop sign needed.   |
| Mobility/Accessibility      | Curb ramp and ADA pad exists.  |
| Pedestrian Safety           | Crosswalks on all nearby intersections and immediate sidewalk access.                                      |
| County Supervisor           | Dist. 4 – Jack Eckblad   |
| City Alderperson            | Dist. 13 – Scott Spiker  |

|                   |   |
|-------------------|---|
| Bus Stop ID #3997 | Ramsey & Marilyn westbound nearside (42.93769093876214, -87.95533173732925) |
|-------------------|---|



|                             |  |
|-----------------------------|--|
| Routes                      | 59   |
| Reason for New Location     | New stop for Route 59 on the western end provides access to residents and senior living facilities nearby. |
| Distance from previous stop | 800 ft to Ramsey & Green.  |
| Distance to following stop  | 950 ft to Ramsey & Honey Creek.  |
| Parking Impacts             | NO PARKING bus stop sign needed.   |
| Mobility/Accessibility      | Curb ramp and ADA pad exists.  |
| Pedestrian Safety           | No adjacent sidewalk present.  |
| County Supervisor           | Dist. 4 – Jack Eckblad   |
| City Alderperson            | Dist. 13 – Scott Spiker  |

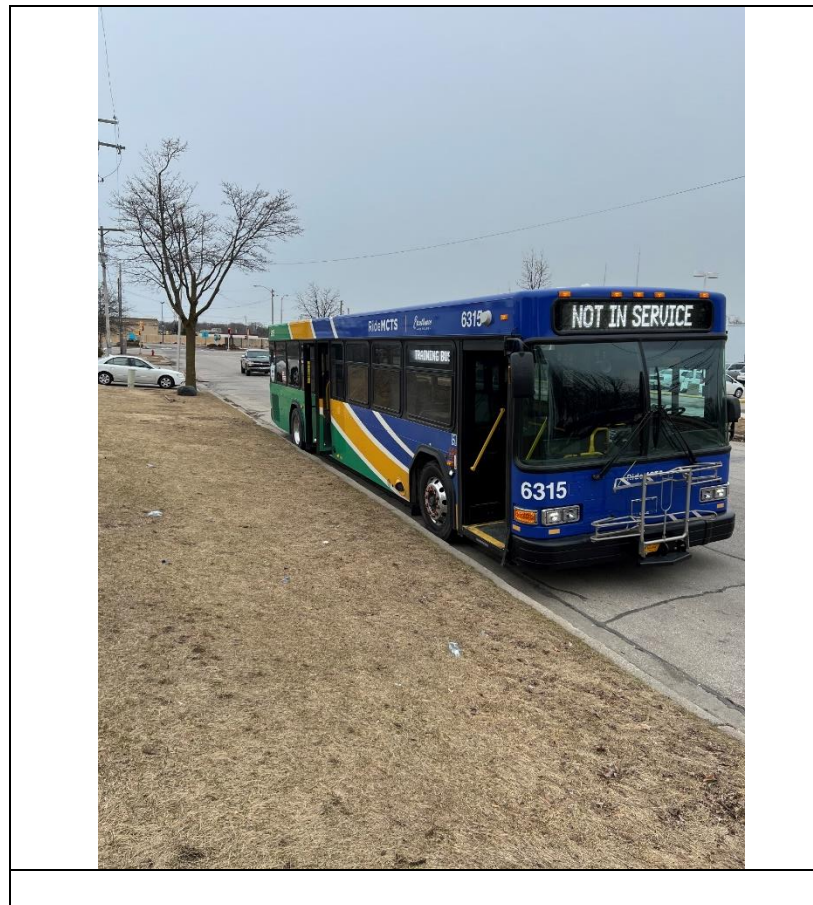
|                   |   |
|-------------------|---|
| Bus Stop ID #3998 | Ramsey & Honey Creek westbound nearside (42.93768942015928, -87.95889788278284) |
|-------------------|---|



|                             |  |
|-----------------------------|--|
| Routes                      | 59   |
| Reason for New Location     | New stop for Route 59 on the western end provides access to residents and senior living facilities nearby. |
| Distance from previous stop | 950 feet from Ramsey & Marilyn   |
| Distance to following stop  | ½ mile to 35 <sup>th</sup> & College   |
| Parking Impacts             | NO PARKING bus stop sign needed.   |
| Mobility/Accessibility      | Curb ramp and ADA pad exists.  |
| Pedestrian Safety           | Immediate sidewalk access.   |
| County Supervisor           | Dist. 4 – Jack Eckblad   |
| City Alderperson            | Dist. 13 – Scott Spiker  |



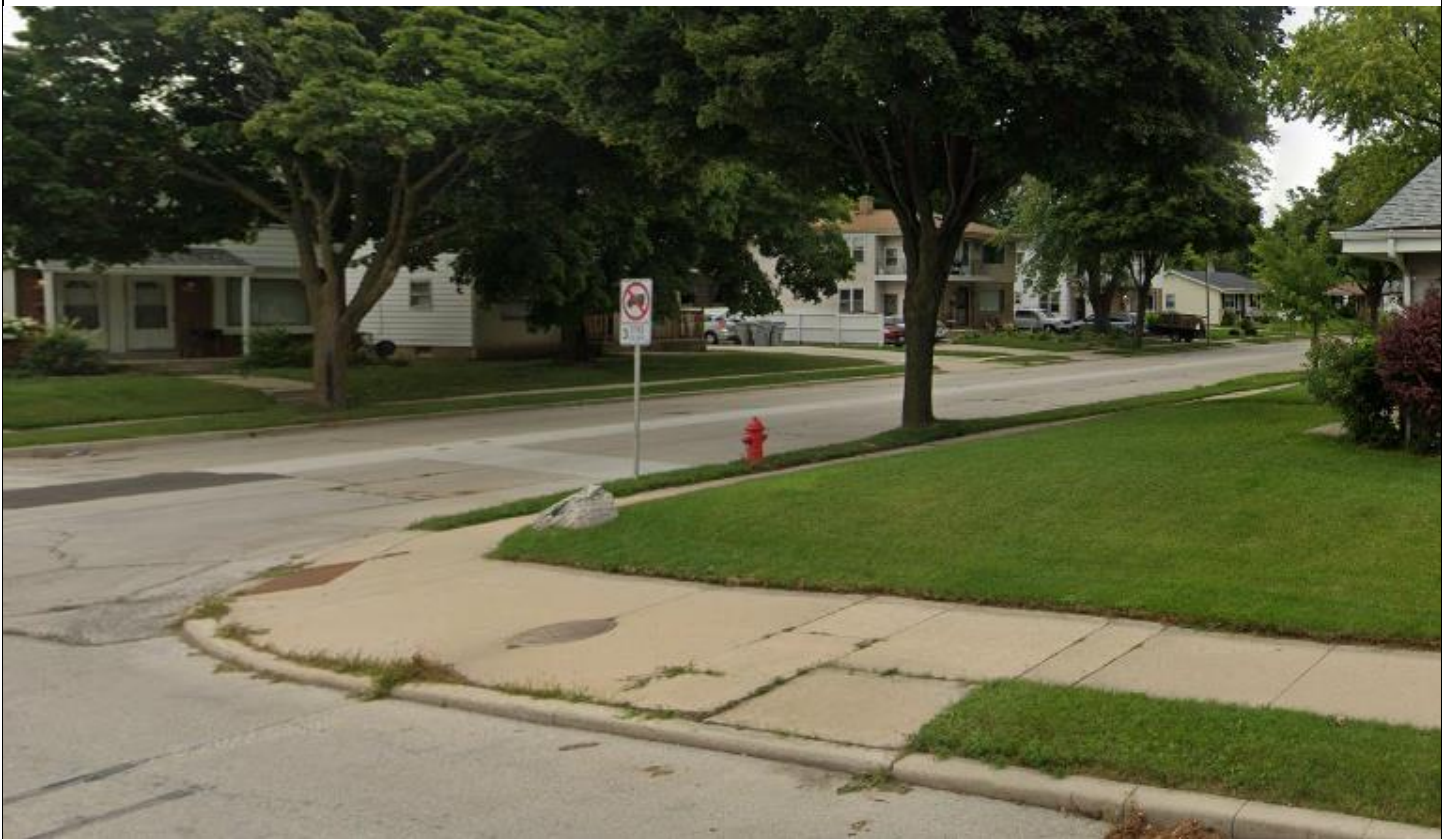
|                  |   |
|------------------|---|
| Bus Stop ID #822 | Florist & Teutonia westbound Mid-Block (43.126574406065416, -87.95300176975442) |
|------------------|---|



|                             |  |
|-----------------------------|--|
| Routes                      | 73   |
| Reason for New Location     | New layover stop for Route 73 on Florist just west of Teutonia. New stop provides nearby bathroom for drivers and transfer opportunities to Route 12, 19 and 30. |
| Distance from previous stop | 300 feet from Teutonia and Florist   |
| Distance to following stop  | 2,000 ft to Florist & 39 <sup>th</sup> Street  |
| Parking Impacts             | NO PARKING bus stop sign needed.   |
| Mobility/Accessibility      | Curb ramp and ADA pad exists.  |
| Pedestrian Safety           | Crosswalks on all nearby intersections and immediate sidewalk access. Traffic lights nearby.   |
| County Supervisor           | Dist. 2 – Willie Johnson Jr.   |
| City Alderperson            | Dist. 1 – Ashanti Hamilton   |



|                   |  |
|-------------------|--|
| Bus Stop ID #5761 | Mill & 51 <sup>st</sup> St. westbound nearside (43.13408406411843, -87.97567723951033) |
|-------------------|--|



|                             |   |
|-----------------------------|---|
| Routes                      | 73  |
| Reason for New Location     | New stop for Route 73 on the eastern end to provide access to residents nearby. |
| Distance from previous stop | ¾-miles from Sherman & Douglas  |
| Distance to following stop  | 1,600 ft to Mill & 56 <sup>th</sup> Street                                      |
| Parking Impacts             | NO PARKING bus stop sign needed.  |
| Mobility/Accessibility      | Curb ramp and ADA pad exists.   |
| Pedestrian Safety           | Immediate sidewalk access.  |
| County Supervisor           | Dist. 2 – Willie Johnson Jr.  |
| City Alderperson            | Dist. 9 – Larresa Taylor  |

|                   |  |
|-------------------|--|
| Bus Stop ID #5763 | Mill & 56 <sup>th</sup> St. westbound nearside (43.13407123851235, -87.98191343804396) |
|-------------------|--|



|                             |   |
|-----------------------------|---|
| Routes                      | 73  |
| Reason for New Location     | New stop for Route 73 on the eastern end to provide access to residents nearby. |
| Distance from previous stop | 1,600 ft from Mill & 51 <sup>st</sup> St.                                       |
| Distance to following stop  | 1,075 ft to Mill & 60 <sup>th</sup> St.   |
| Parking Impacts             | NO PARKING bus stop sign needed.  |
| Mobility/Accessibility      | Curb ramp and ADA pad exists.   |
| Pedestrian Safety           | Immediate sidewalk access.  |
| County Supervisor           | Dist. 2 – Willie Johnson Jr.  |
| City Alderperson            | Dist. 9 – Larresa Taylor  |

|                   |  |
|-------------------|--|
| Bus Stop ID #7469 | Mill & 60 <sup>th</sup> St. westbound nearside (43.13407584862144, -87.985948357531) |
|-------------------|--|



|                             |   |
|-----------------------------|---|
| Routes                      | 73  |
| Reason for New Location     | New stop for Route 73 on the eastern end to provide access to residents nearby.           |
| Distance from previous stop | 1,075 ft from Mill & 60 <sup>th</sup> St.   |
| Distance to following stop  | 1,525 ft to Mill & 64 <sup>th</sup> St.   |
| Parking Impacts             | No parking exists.  |
| Mobility/Accessibility      | Curb ramp and ADA pad exists.   |
| Pedestrian Safety           | Immediate sidewalk access. Traffic lights and crosswalks are present at the intersection. |
| County Supervisor           | Dist. 18 – Deanna Alexander   |
| City Alderperson            | Dist. 9 – Larresa Taylor  |



|                   |  |
|-------------------|--|
| Bus Stop ID #7506 | Mill & 60 <sup>th</sup> St. eastbound nearside (43.13381195415579, -87.98651362475573) |
|-------------------|--|



|                             |   |
|-----------------------------|---|
| Routes                      | 73  |
| Reason for New Location     | New stop for Route 73 on the eastern end to provide access to residents nearby.           |
| Distance from previous stop | 1,200 ft from Mill & 64 <sup>th</sup> St.   |
| Distance to following stop  | 1,200 ft to Mill & 60 <sup>th</sup> St.   |
| Parking Impacts             | No parking exists.  |
| Mobility/Accessibility      | Curb ramp and ADA pad exists.   |
| Pedestrian Safety           | Immediate sidewalk access. Traffic lights and crosswalks are present at the intersection. |
| County Supervisor           | Dist. 18 – Deanna Alexander   |
| City Alderperson            | Dist. 9 – Larresa Taylor  |

|                   |   |
|-------------------|---|
| Bus Stop ID #5752 | Mill & 56 <sup>th</sup> St. eastbound nearside (43.133814754678305, -87.98223963699333) |
|-------------------|---|



|                             |   |
|-----------------------------|---|
| Routes                      | 73  |
| Reason for New Location     | New stop for Route 73 on the eastern end to provide access to residents nearby. |
| Distance from previous stop | 1,200 ft from Mill & 60 <sup>th</sup> St.                                       |
| Distance to following stop  | 1,655 ft to Mill & 51 <sup>st</sup> St.   |
| Parking Impacts             | NO PARKING bus stop sign needed.  |
| Mobility/Accessibility      | Curb ramp and ADA pad exists.   |
| Pedestrian Safety           | Immediate sidewalk access.  |
| County Supervisor           | Dist. 2 – Willie Johnson Jr.  |
| City Alderperson            | Dist. 9 – Larresa Taylor  |



|                   |   |
|-------------------|---|
| Bus Stop ID #5754 | Mill & N. 51 <sup>st</sup> Eastbound nearside (43.133846, -87.976009) |
|-------------------|---|



|                             |  |
|-----------------------------|--|
| Routes                      | 73   |
| Reason for New Location     | New stop for Route 73, which will travel East/West down Mill road. This stop provides access to the local industrial area and residents nearby |
| Distance from previous stop | 1,678 ft from 56 <sup>th</sup> & Mill.   |
| Distance to following stop  | 2,610 feet to Mill & Sherman.  |
| Parking Impacts             | NO PARKING bus stop sign needed.   |
| Mobility/Accessibility      | Curb ramp and ADA pad exists.  |
| Pedestrian Safety           | Immediate sidewalk access.   |
| County Supervisor           | Dist. 2 – Willie Johnson, Jr.  |
| City Alderperson            | Dist. 9 – Laressa Taylor   |

|                   |   |
|-------------------|---|
| Bus Stop ID #5740 | Mill & Sherman Eastbound nearside (43.133846, -87.966258) |
|-------------------|---|



|                             |   |
|-----------------------------|---|
| Routes                      | 73  |
| Reason for New Location     | New stop for Route 73, which will travel East/West down Mill road. This stop provides a transfer opportunity to Route 35. |
| Distance from previous stop | 2,610 feet from Mill & 51 <sup>st</sup> .   |
| Distance to following stop  | 3,535 ft to Mill & Teutonia.  |
| Parking Impacts             | N/A, pedestrian island used.  |
| Mobility/Accessibility      | Ramp in place to assist with boarding.  |
| Pedestrian Safety           | Crosswalks and traffic lights at intersection to aid those accessing the pedestrian island.                               |
| County Supervisor           | Dist. 2 – Willie Johnson, Jr.   |
| City Alderperson            | Dist. 9 – Laressa Taylor  |

|                   |  |
|-------------------|--|
| Bus Stop ID #5742 | Mill & Teutonia Eastbound nearside (43.135338, -87.953669) |
|-------------------|--|



|                             |   |
|-----------------------------|---|
| Routes                      | 73  |
| Reason for New Location     | New stop for Route 73, which will travel East/West down Mill road. This stop provides a transfer opportunity to Route 12. |
| Distance from previous stop | 3,535 feet from Mill & Sherman.   |
| Distance to following stop  | 2,020 feet to Teutonia & Silver Mill.   |
| Parking Impacts             | NO PARKING bus stop sign needed.  |
| Mobility/Accessibility      | Curb ramp exists.   |
| Pedestrian Safety           | Crosswalk, traffic lights, and sidewalk access at this intersection.  |
| County Supervisor           | Dist. 2 – Willie Johnson, Jr.   |
| City Alderperson            | Dist. 1 – Andrea M. Pratt   |



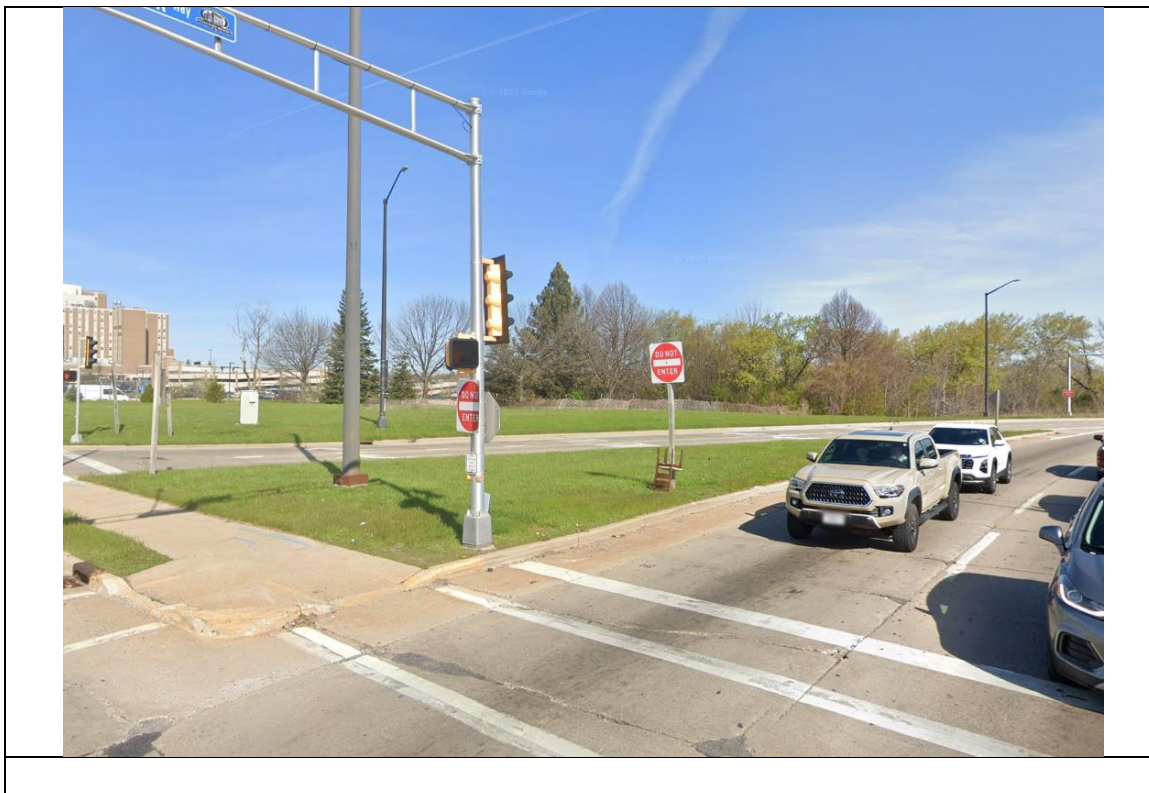
|                   |   |
|-------------------|---|
| Bus Stop ID #2325 | Wells & N. 35 <sup>th</sup> Northbound nearside (43.040240, -87.957955) |
|-------------------|---|



|                             |   |
|-----------------------------|---|
| Routes                      | 74  |
| Reason for New Location     | Route 74 will serve S. 43 <sup>rd</sup> St from Morgan to Wisconsin Ave. It will then travel east and loop around 37 <sup>th</sup> , Wells and 35 <sup>th</sup> Street before heading west on Wisconsin. This stop will provide access to the area. |
| Distance from previous stop | 3,807 feet from 45 <sup>th</sup> & Wisconsin  |
| Distance to following stop  | 489 feet to 35 <sup>th</sup> & Wisconsin.   |
| Parking Impacts             | NO PARKING bus stop sign needed.  |
| Mobility/Accessibility      | Curb ramp and ADA pad exists.   |
| Pedestrian Safety           | Crosswalks and traffic lights at this intersection and immediate sidewalk access.   |
| County Supervisor           | Dist. 15 – Sky Z. Capriolo  |
| City Alderperson            | Dist. 15 – Russell W. Stamper, II   |



|                   |  |
|-------------------|--|
| Bus Stop ID #9759 | Miller Park Way & National Southbound nearside (43.020779, -87.970302) |
|-------------------|--|



|                             |   |
|-----------------------------|---|
| Routes                      | 74  |
| Reason for New Location     | New Route 74 service uses Miller Park Way North/South. This stop allows for a transfer opportunity to Route 18. |
| Distance from previous stop | 1.4 miles from 45 <sup>th</sup> & Wisconsin   |
| Distance to following stop  | 1,580 ft to Miller Park Way & Greenfield  |
| Parking Impacts             | N/A   |
| Mobility/Accessibility      | ADA Boarding Pad to be installed in the near future. Adjacent curb ramps exist.                                 |
| Pedestrian Safety           | Crosswalk and traffic lights at this intersection.  |
| County Supervisor           | Dist. 15 – Sky Z. Capriolo  |
| City Alderperson            | Dist. 10 – Sharlen P. Moore   |

|                   |   |
|-------------------|---|
| Bus Stop ID #9734 | Winfield & N. 76 <sup>th</sup> Northbound nearside ( <a href="#">43.133233</a> , <a href="#">-88.006499</a> ) |
|-------------------|---|



|                             |  |
|-----------------------------|--|
| Routes                      | BLU  |
| Reason for New Location     | New Blueline Layover stop and northern terminus with restroom access nearby. |
| Distance from previous stop | 1,429 feet from 73 <sup>rd</sup> & Mill Rd.                                  |
| Distance to following stop  | 867 feet to Mill & 76 <sup>th</sup> .  |
| Parking Impacts             | NO PARKING bus stop sign needed.   |
| Mobility/Accessibility      | Curb ramps at intersection.  |
| Pedestrian Safety           | Sidewalk access.   |
| County Supervisor           | Dist. 18 – Deanna Alexander  |
| City Alderperson            | Dist. 9 – Larresa Taylor   |

|                   |  |
|-------------------|--|
| Bus Stop ID #5157 | Oklahoma & Nevada Eastbound nearside (42.988207, -87.891997) |
|-------------------|--|



|                             |   |
|-----------------------------|---|
| Routes                      | 51  |
| Reason for New Location     | Former Stop requested by local residents. |
| Distance from previous stop | 659 ft from S. Clement Ave.               |
| Distance to following stop  | 704 ft to S. Brust Ave.                   |
| Parking Impacts             | NO PARKING bus stop sign needed.          |
| Mobility/Accessibility      | ADA pad at stop, curb ramp at corner.     |
| Pedestrian Safety           | Sidewalk access.                          |
| County Supervisor           | Dist. 4 – Jack Eckblad                    |
| City Alderperson            | Dist. 14 – Marina Dimitrijevic            |



|                    |  |
|--------------------|--|
| Bus Stop ID # 5063 | Oklahoma & Nevada Westbound nearside (42.988314, -87.891890) |
|--------------------|--|



|                             |   |
|-----------------------------|---|
| Routes                      | 51  |
| Reason for New Location     | Former Stop requested by local residents. |
| Distance from previous stop | 744 feet from Oklahoma & Brust            |
| Distance to following stop  | 608 feet to Oklahoma & Clement            |
| Parking Impacts             | NO PARKING bus stop sign needed.          |
| Mobility/Accessibility      | ADA pad at stop, curb ramp at corner.     |
| Pedestrian Safety           | Sidewalk access.                          |
| County Supervisor           | Dist. 4 – Jack Eckblad                    |
| City Alderperson            | Dist. 14 – Marina Dimitrijevic            |

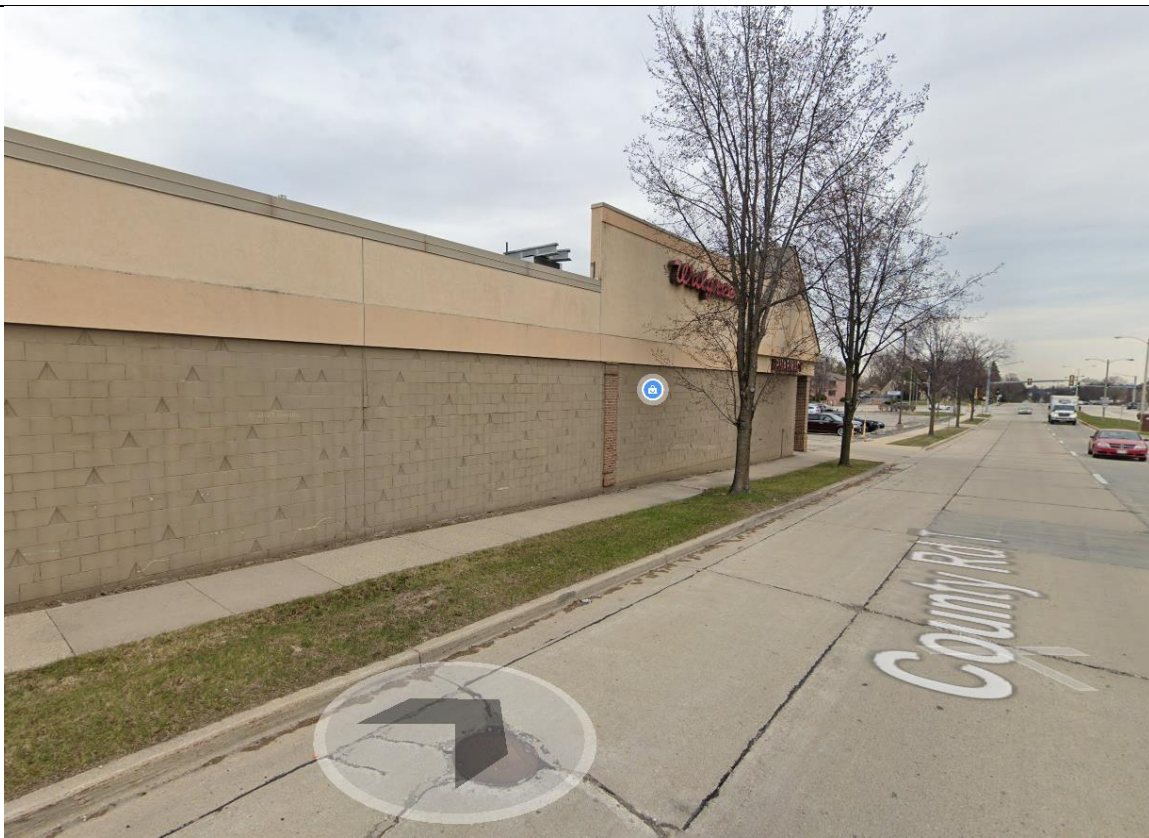


|                    |  |
|--------------------|--|
| Bus Stop ID # 9776 | N. 76th & Good Hope Northbound farside (43.149312, -88.005178) |
|--------------------|--|



|                             |   |
|-----------------------------|---|
| Routes                      | 76  |
| Reason for New Location     | New stop to better serve businesses and nearby high school.                     |
| Distance from previous stop | 350 ft from 76 <sup>th</sup> & Good Hope nearside stop                          |
| Distance to following stop  | 825 ft to 76 <sup>th</sup> & Clinton  |
| Parking Impacts             | N/A   |
| Mobility/Accessibility      | ADA Boarding Pad to be installed in the near future. Adjacent curb ramps exist. |
| Pedestrian Safety           | Crosswalk and traffic lights at this intersection.                              |
| County Supervisor           | Dist. 18 – Deanna Alexander   |
| City Alderperson            | Dist. 9 – Larresa Taylor  |

|                   |  |
|-------------------|--|
| Bus Stop ID #9741 | Beloit Rd & S. 92 <sup>nd</sup> St (42.987268, -88.026325) |
|-------------------|--|



|                             |   |
|-----------------------------|---|
| Routes                      | 56  |
| Reason for New Location     | Route 56 will be re-routed to travel down Beloit Rd east-west, with this stop being the layover on the western end. Restroom access for bus drivers at Walgreens. |
| Distance from previous stop | 730 ft from Beloit & Oklahoma.  |
| Distance to following stop  | 802 ft to 92 <sup>nd</sup> & Oklahoma.  |
| Parking Impacts             | NO PARKING bus stop sign needed.  |
| Mobility/Accessibility      | Curb ramps at intersections nearby.   |
| Pedestrian Safety           | Sidewalk access.  |
| County Supervisor           | Dist. 9 – Patti Logsdon   |
| City Alderperson            | Dist. 11 – Peter Burgelis   |