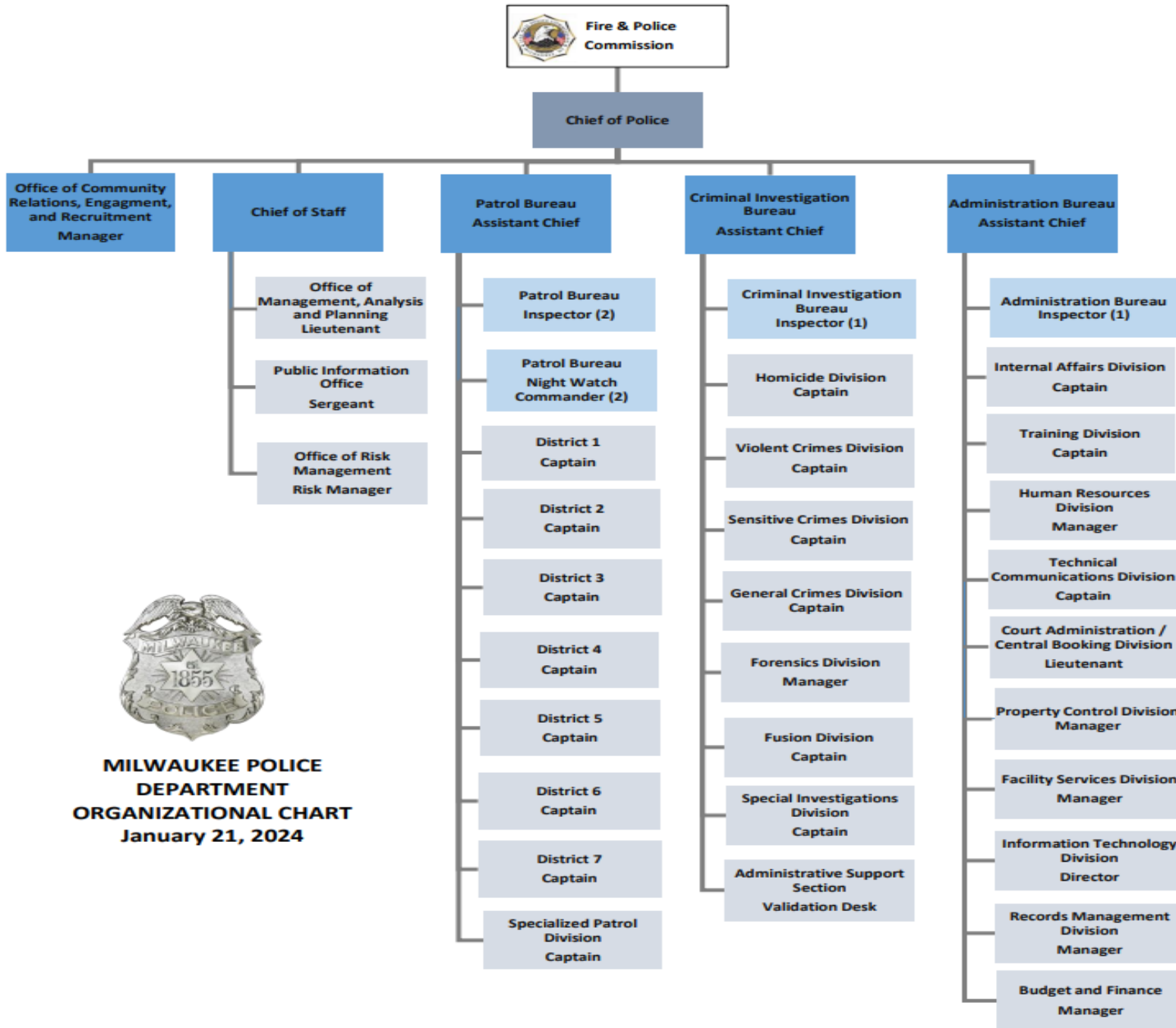




The Milwaukee Police Department

Deployment of Sworn Officers: Common Council File 240886




MILWAUKEE POLICE
DEPARTMENT
ORGANIZATIONAL CHART
January 21, 2024

Executive Command Staff	Sworn Number	Limited Duty
Police Officer	12	
Sergeant	1	
Admin Lieutenant	2	
Captain	2	
Inspector	4	
Assistant Chief	3	
Chief	1	
TOTAL	25	

**All numbers and assignments are as of August of 2024
Also does not include recruits that are graduating this week**

**Chief of Staff
16 Sworn**

OMAP	Sworn Number	Limited Duty
Police Officer	5	1
Lieutenant	1	
TOTAL	6	1

Compliance	Sworn Number	Limited Duty
Police Officer	8	4
Sergeant	1	
Lieutenant	1	1
TOTAL	10	5

Admin Bureau

167 Sworn

HR	Sworn	LD
Police Officer	7	5
Sergeant	1	1
TOTAL	8	6

IT	Sworn	LD
Police Officer	3	1
Lieutenant	1	
TOTAL	4	1

Internal Affairs	Sworn	LD
Police Officer	4	3
Detective	4	
Sergeant	10	
Lieutenant	3	
Captain	1	
TOTAL	22	3

Property	Sworn	LD
Police Officer	9	1
Sergeant	1	
Lieutenant	1	
TOTAL	11	1

Facilities	Sworn	LD
Police Officer	1	
TOTAL	1	

CART	Sworn	LD
Police Officer	5	
Police Sergeant	1	
TOTAL	6	

Court Admin	Sworn	LD
Police Officer	18	2
Detective	2	
Police Sergeant	2	2
Court Liaison Officer	1	
TOTAL	23	4

TechComm	Sworn	LD
Sergeant	5	1
Lieutenant	2	
Captain	1	
TOTAL	8	1

Academy	Sworn	LD
Police Officer	19	11
Detective	1	
Sergeant	6	
Lieutenant	1	
TOTAL	26	1

Open Records	Sworn	LD
Police Officer	15	11
Sergeant	1	
Lieutenant	1	
TOTAL	17	11

Central Booking	Sworn	LD
Police Officer	33	3
Sergeant	7	1
Lieutenant	1	
TOTAL	41	4

D1 (includes RNC team)	Sworn	LD
Police Officer	70	9
Detective	1	
Detective (Z)	1	
Sergeant	14	
Lieutenant	5	
Captain	2	
Total	93	9
D2	Sworn	LD
Police Officer	118	3
Sergeant	14	1
Lieutenant	2	
Captain	1	
TOTAL	135	4

D3	Sworn	LD
Police Officer	128	9
Sergeant	18	
Lieutenant	3	
Captain	1	
TOTAL	150	9

D4	Sworn	LD
Police Officer	112	4
Sergeant	15	
Lieutenant	3	
Captain	1	
TOTAL	131	4

D5	Sworn	LD
Police Officer	122	3
Sergeant	18	
Lieutenant	3	
Captain	1	
TOTAL	144	3

D6	Sworn	LD
Police Officer	67	2
Sergeant	13	
Lieutenant	3	
Captain	1	
TOTAL	84	2

D7	Sworn	LD
Police Officer	124	2
Sergeant	17	2
Lieutenant	3	1
Captain	1	
TOTAL	145	5

SPD	Sworn	LD
Police Officer	127	4
Sergeant	14	
Lieutenant	4	
Captain	1	
TOTAL	146	4

Patrol Bureau

1,028 Sworn (868 Police Officers - 741 Patrol, 127 SPD)

Criminal Investigation Bureau

274 Sworn

Sensitive Crimes	Sworn	LD
Police Officer	5	
Detective	19	
Sergeant	4	
Lieutenant	2	
Captain	1	
TOTAL	31	

Fusion	Sworn	LD
Police Officer	20	6
Detective	11	
Sergeant	2	
Lieutenant	2	
Captain	1	
TOTAL	36	6

HIDTA	Sworn	LD
Police Officer	17	
Detective	1	
Sergeant	2	
Lieutenant	1	
TOTAL	21	

Forensics	Sworn	LD
Police Officer	6	4
Sergeant	2	
Latent Print Ex	3	
Chief Latent	1	
FI	16	
TOTAL	28	4

Gun Violence	Sworn	LD
Police Officer	1	1
Detective	33	
Sergeant	5	
Lieutenant	2	
Captain	1	
TOTAL	42	1

Homicide	Sworn	LD
Police Officer	1	1
Detective	34	
Sergeant	4	
Lieutenant	3	
Captain	1	
TOTAL	43	1

SID	Sworn	LD
Police Officer	31	1
Detective	7	
Sergeant	4	
Lieutenant	1	
Captain	1	
TOTAL	44	1

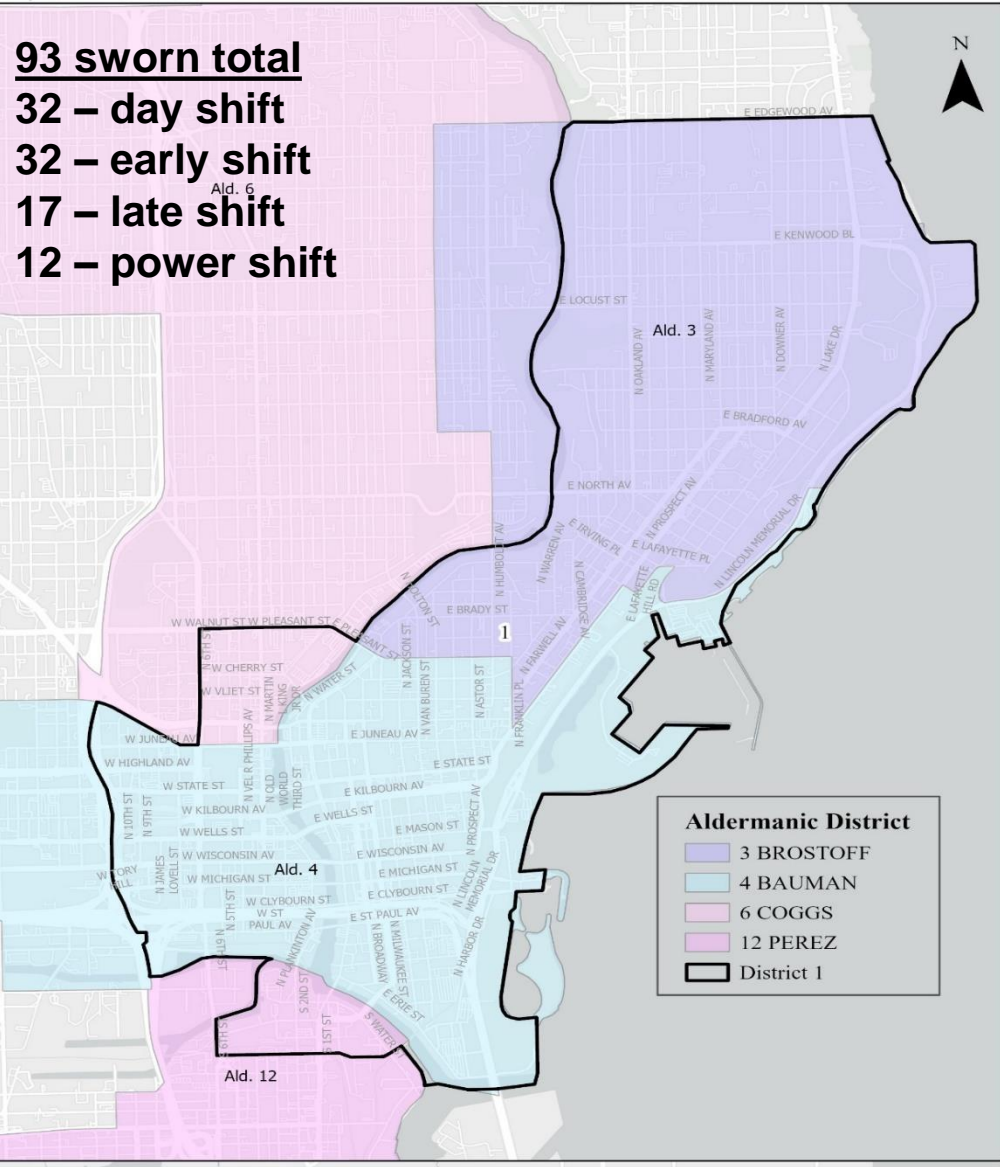
Major Crimes	Sworn	LD
Detective	24	2
Sergeant	5	
Lieutenant	3	
Captain	1	
TOTAL	33	2



Milwaukee Police Department
Aldermanic Districts - District 1



93 sworn total
32 – day shift
32 – early shift
17 – late shift
12 – power shift



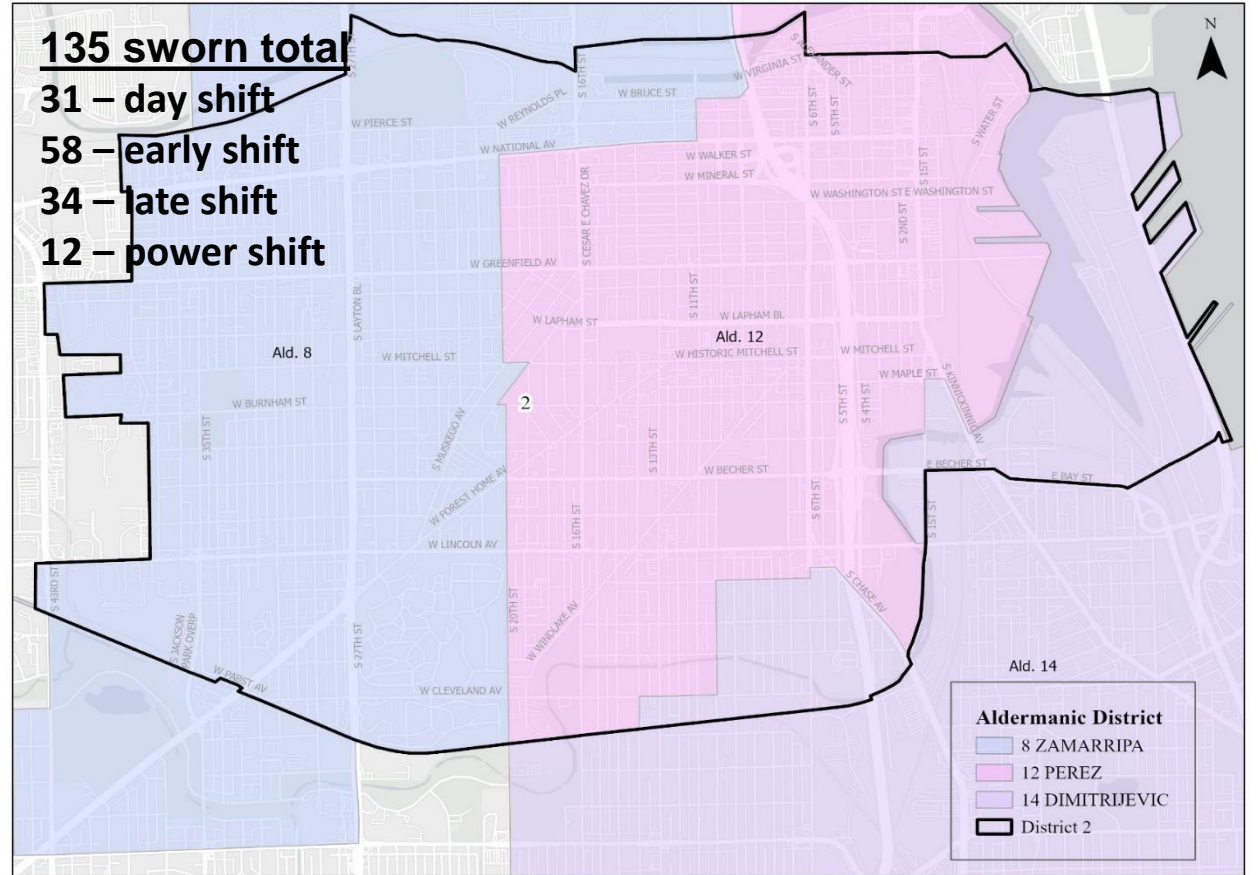
Aldermanic district boundaries redrawn on April 17, 2024 due to U.S Census redistricting.



Milwaukee Police Department
Aldermanic Districts - District 2



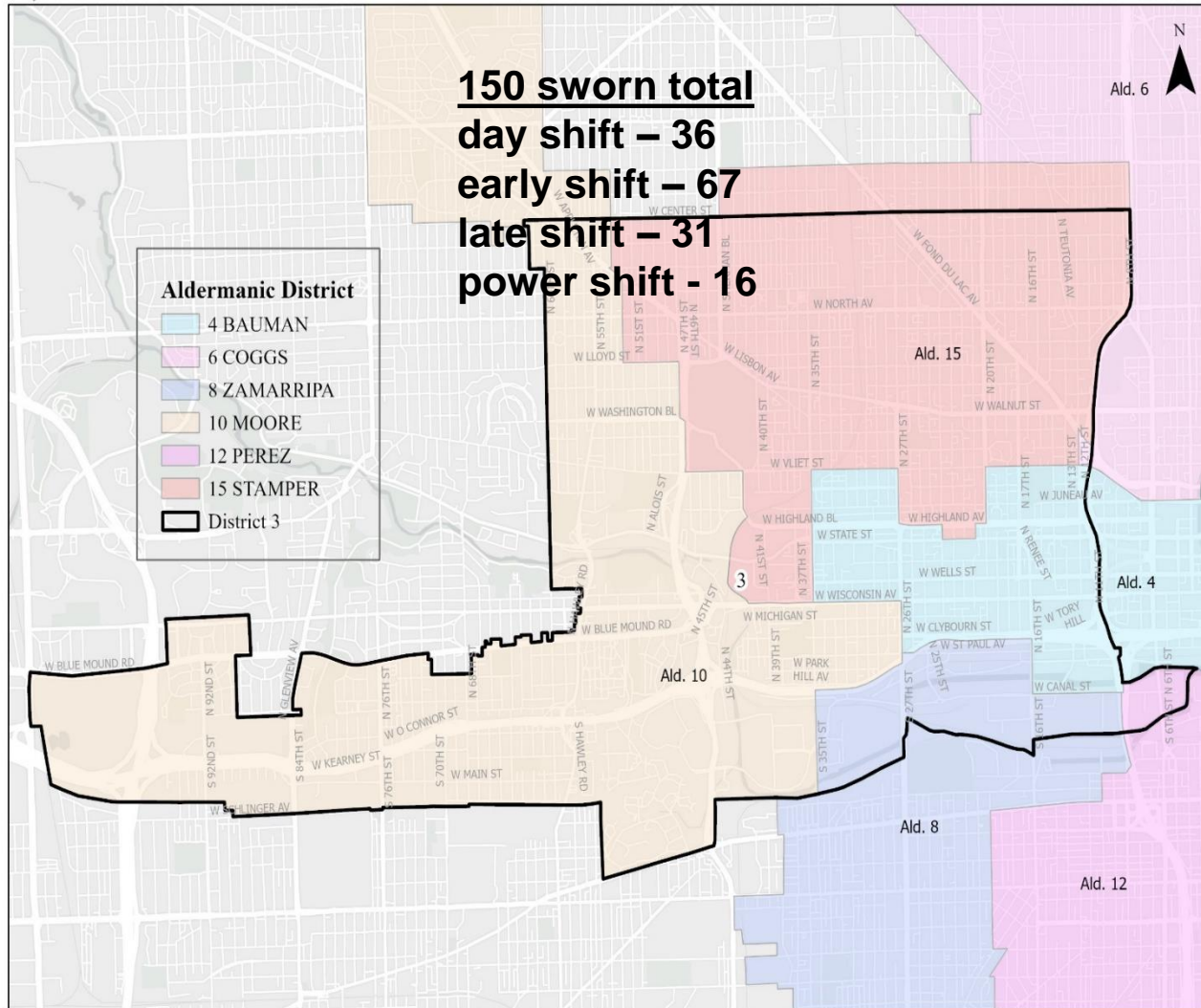
135 sworn total
31 – day shift
58 – early shift
34 – late shift
12 – power shift



Aldermanic district boundaries redrawn on April 17, 2024 due to U.S Census redistricting.



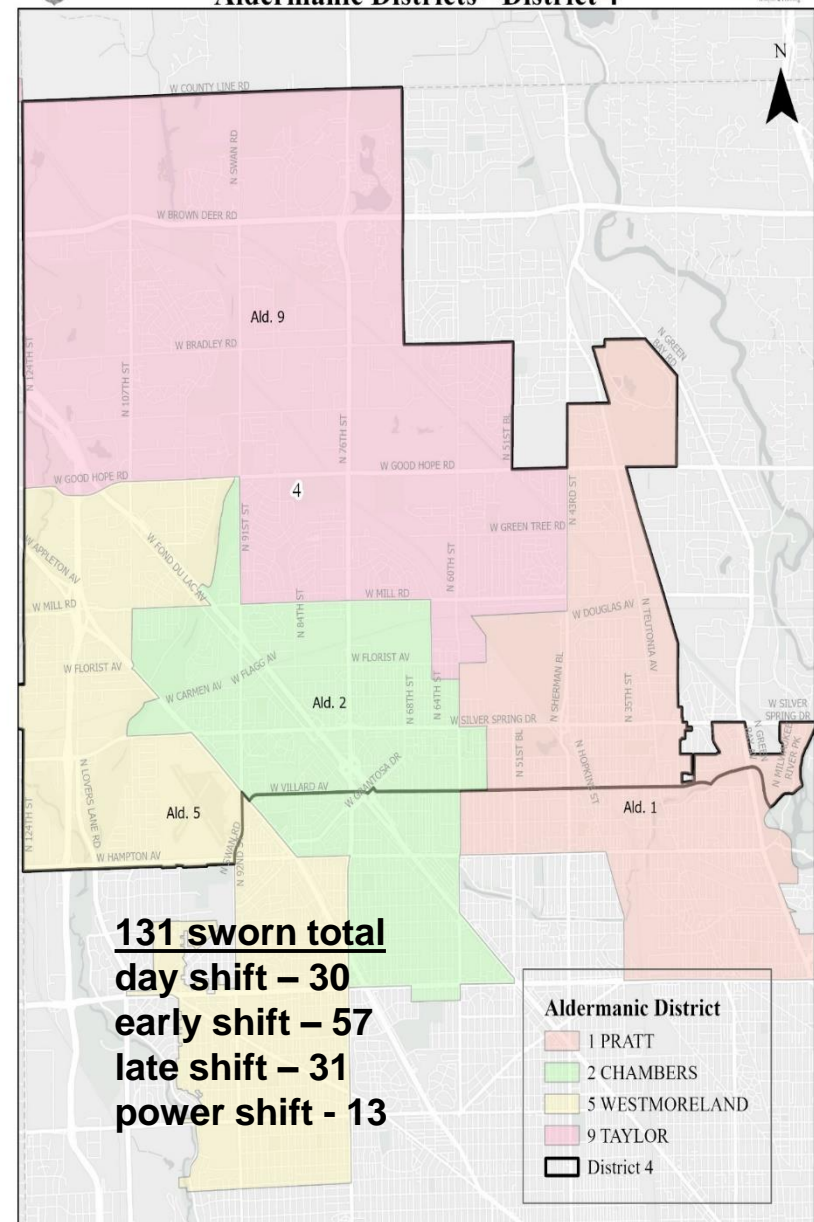
Milwaukee Police Department
Aldermanic Districts - District 3



Aldermanic district boundaries redrawn on April 17, 2024 due to U.S Census redistricting.



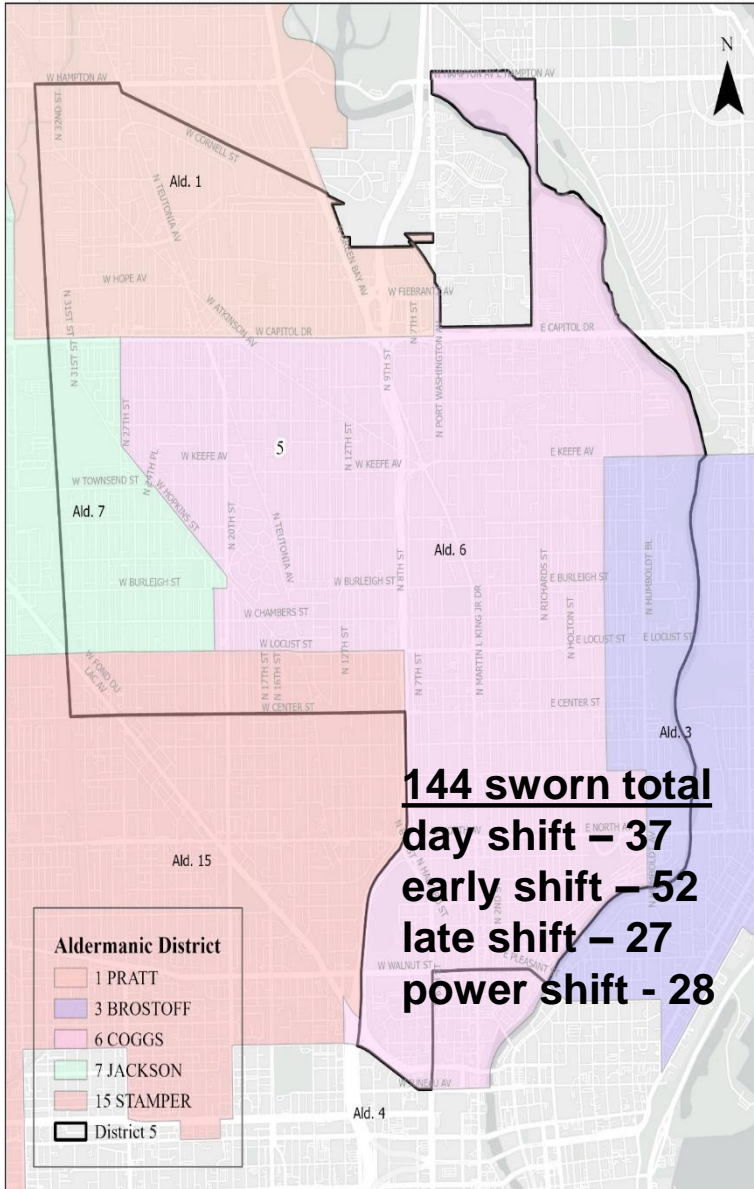
Milwaukee Police Department
Aldermanic Districts - District 4



Aldermanic district boundaries redrawn on April 17, 2024 due to U.S Census redistricting.



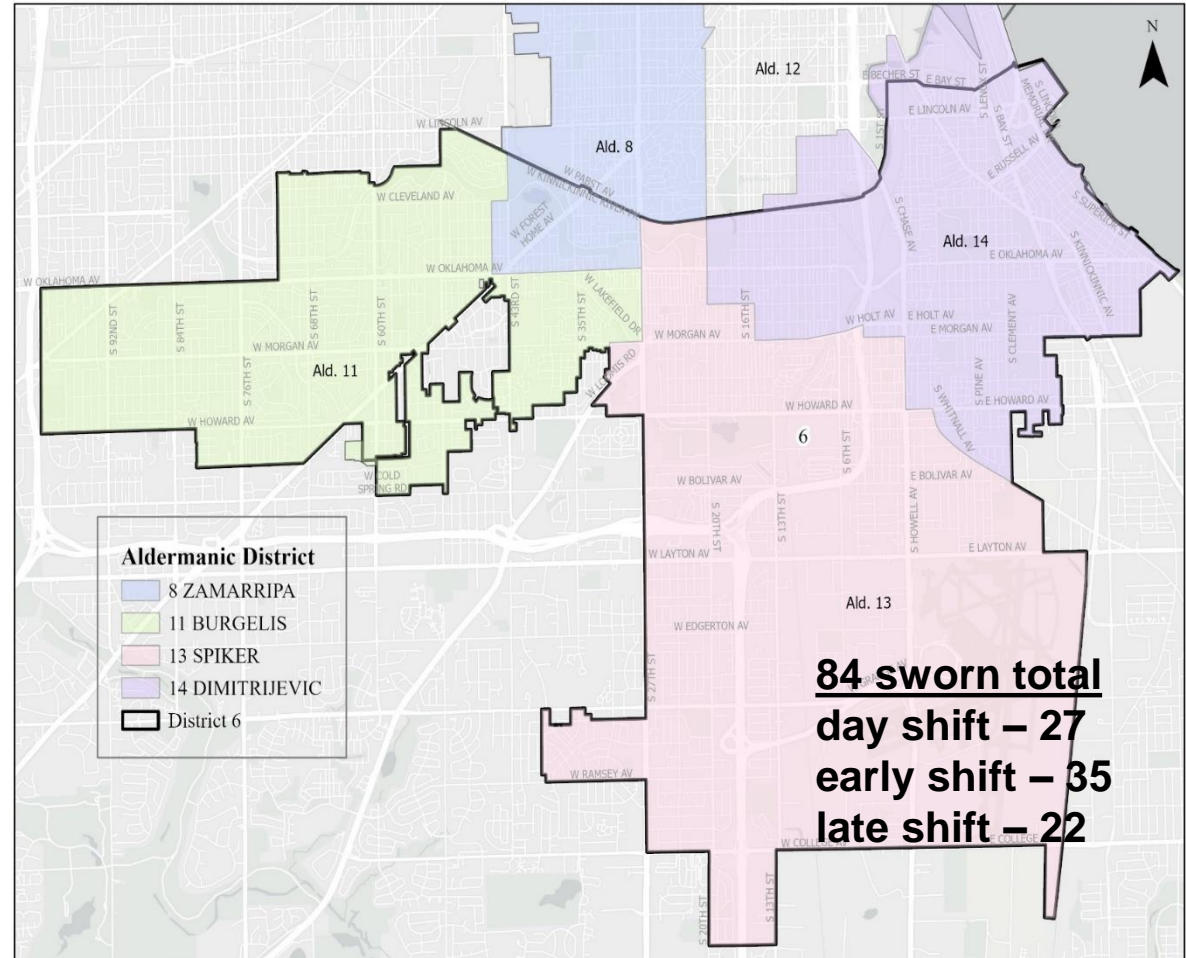
Milwaukee Police Department
Aldermanic Districts - District 5



Aldermanic district boundaries redrawn on April 17, 2024 due to U.S Census redistricting.



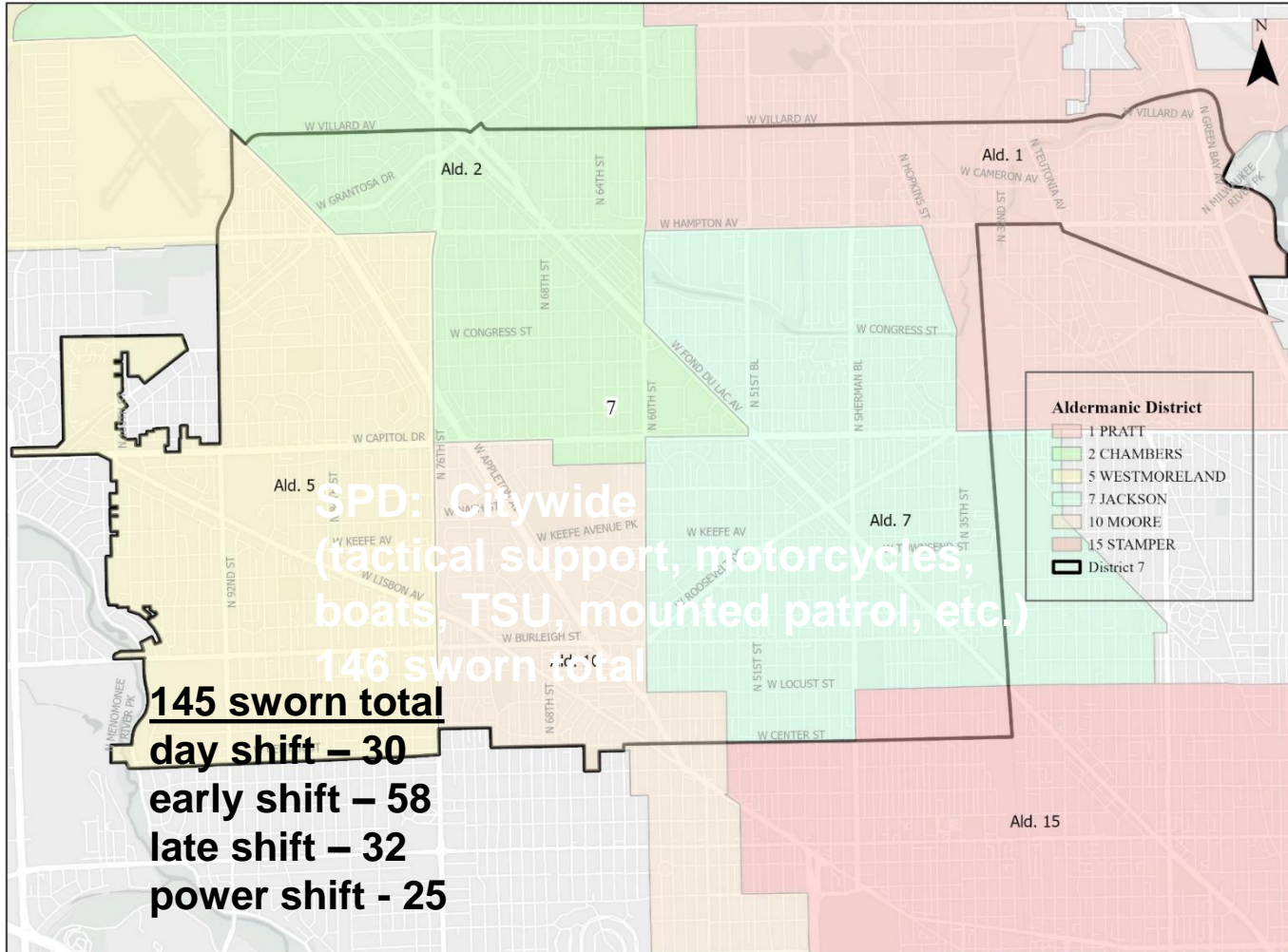
Milwaukee Police Department
Aldermanic Districts - District 6



Aldermanic district boundaries redrawn on April 17, 2024 due to U.S Census redistricting.



Milwaukee Police Department
Aldermanic Districts - District 7



SPD: Citywide
(tactical support, motorcycles, boats, TSU, mounted patrol, etc.)
146 sworn total

145 sworn total
day shift – 30
early shift – 58
late shift – 32
power shift - 25

Aldermanic district boundaries redrawn on April 17, 2024 due to U.S Census redistricting.



MPD currently has a total of **59 sworn members** on limited duty for injuries that occurred while **off-duty**.

Off-Duty Limited Duty Breakdown per Bureau (total officers/%):

Patrol=20, 33% (All 7 districts and SPD)

CIB=10, 17% (CIB, Fusion, IMD)

Admin=23, 40% (Court Admin, Central Booking, HR, IT, IAD, Property Control and Open Records)

Office of the Chief=6, 10% (OMAP and Compliance Management Section)

Total: 59/100%

We currently have a total of **37 sworn members** on limited duty for injuries that occurred while **on duty** and of those 37; **12 are permanent limited duty**.

MPD currently has a total of **37 sworn members** on limited duty for injuries that occurred while **on duty** and of those 37; **12 are permanent limited duty.**

On-Duty Limited Duty Breakdown per Division (total officers/%):

Patrol=21, 33% (All 7 districts and SPD)

CIB=5, 17% (CIB, Fusion, SID)

Admin=9, 40% (Academy, IAD, Open Records and TCD)

Office of the Chief=2, 10% (Compliance Management Section)

Total: 37/100%

NOTE: Regarding the 12 members (11 officers, 1 supervisor) that are permanent limited duty, the breakdown of where they are assigned by bureau is as follows:

CIB=3, 25%

Admin=7, 58%

Office of the Chief=2, 17%

Summary:

Total number of limited duty=96

Total number of sworn strength as of August 2024=1485

Percentage of total sworn that are limited duty status=6.4%