

**SYMBOLS KEY:**

- |  |   |  |                                      |  |                                    |
|--|---|--|--------------------------------------|--|------------------------------------|
|  | RECESSED DOWNLIGHT FIXTURE                    |  | IN-GRADE UPLIGHT                     |  | WALL BOX DIMMER                    |
|  | RECESSED ADJUSTABLE FIXTURE                   |  | LANDSCAPE ACCENT                     |  | (3) 3-WAY                          |
|  | SURFACE MOUNTED PENDANT OR CHANDELIER         |  | FREE-STANDING LAMP                   |  | (ELV) ELECTRONIC LOW VOLTAGE       |
|  | SURFACE MOUNTED WALL SCONCE                   |  | FAN / MOTOR                          |  | (MLV) MAGNETIC LOW VOLTAGE         |
|  | LINEAR LINE VOLTAGE FIXTURE                   |  | TRANSFORMER - 120V/12V OR 120V/24V   |  | SINGLE POLE SWITCH                 |
|  | LINEAR LOW VOLTAGE FIXTURE                    |  | SWITCHED CLOCK RECEPTACLE            |  | (3) 3-WAY                          |
|  | VERTICALLY MOUNTED LINEAR LOW VOLTAGE FIXTURE |  | DUPLEX RECEPTACLE (WP) WEATHER PROOF |  | (4) 4-WAY                          |
|  | RECESSED CEILING LINEAR LIGHT FIXTURE         |  | CEILING FAN                          |  | (J) JAMB                           |
|  | RECESSED WALL MOUNTED FIXTURE                 |  |                                      |  | MOTION SENSOR SWITCH               |
|  | RECESSED WALL MOUNTED FIXTURE                 |  |                                      |  | SMART DIMMER ON LIGHTING SYSTEM    |
|  | CEILING MOUNTED MONOPOINT                     |  |                                      |  | SMART SWITCH ON LIGHTING SYSTEM    |
|  | WALL OR BEAM MOUNTED MONOPOINT                |  |                                      |  | LIGHTING CONTROL KEYPAD            |
|  |   |  |                                      |  | 000A CONTROL SYSTEM LOAD ID NUMBER |

**GENERAL NOTES:**

- REFER TO ARCHITECTURAL AND MILLWORK DRAWINGS FOR ADDITIONAL LIGHTING INFORMATION.

**KEY NOTES:**

- TBD.
- TBD.

**HOILAND STUDIOS**  
DESIGNED LIGHTING

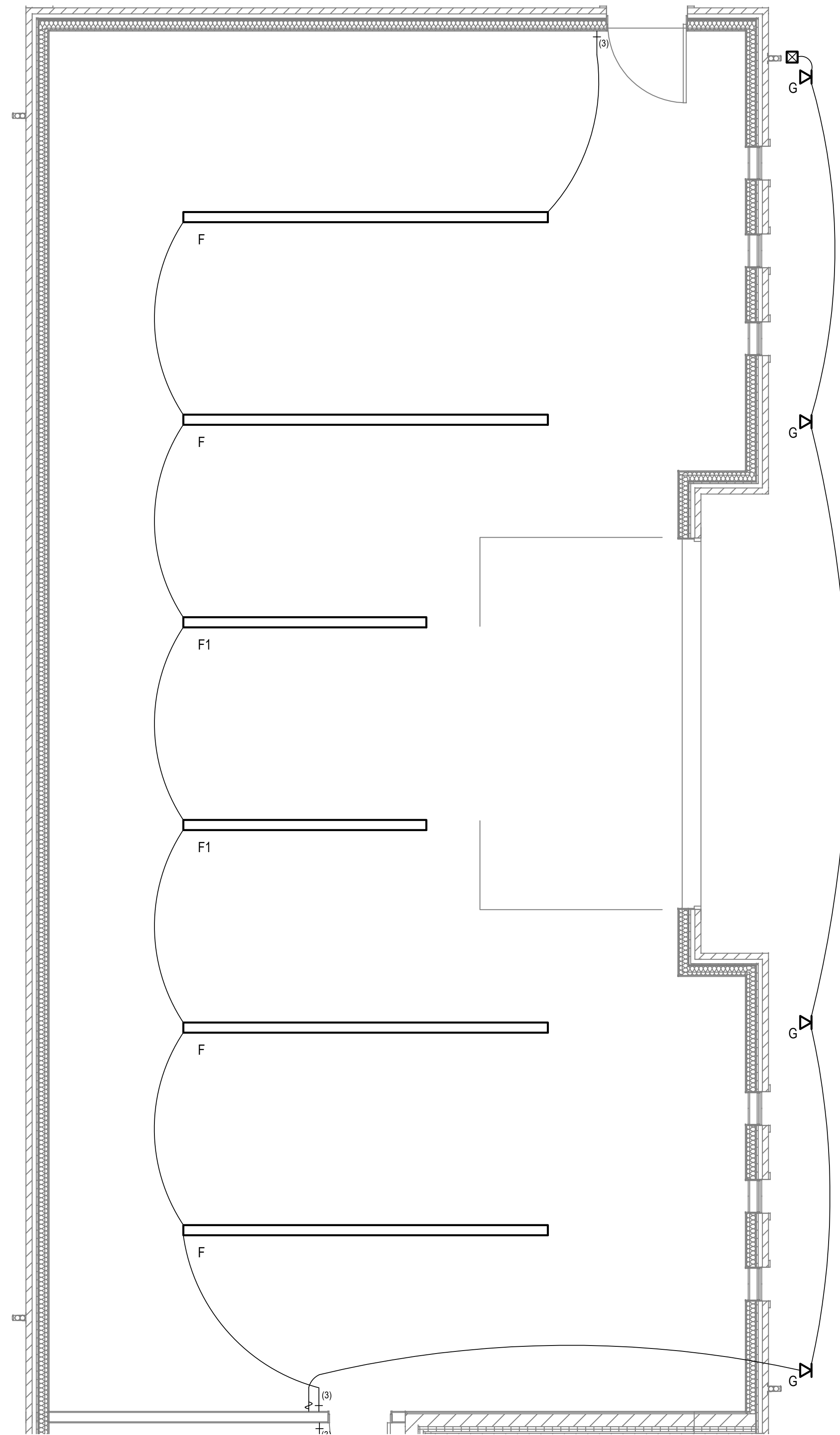
www.hoilandstudios.com  
info@hoilandstudios.com  
847-989-2362

OUTBUILDING  
3319 North Lake Drive,  
Milwaukee, WI, 53211

POOL AREA & LIVING SPACES

Scale: 1/4" = 1' - 0"  
Date: 06/14/2022

**L1.1**



**SYMBOLS KEY:**

- |  |   |  |                                      |  |                                 |
|--|---|--|--------------------------------------|--|---------------------------------|
|  | RECESSED DOWNLIGHT FIXTURE                    |  | IN-GRADE UPLIGHT                     |  | WALL BOX DIMMER                 |
|  | RECESSED ADJUSTABLE FIXTURE                   |  | LANDSCAPE ACCENT                     |  | (3) 3-WAY                       |
|  | SURFACE MOUNTED PENDANT OR CHANDELIER         |  | FREE-STANDING LAMP                   |  | (ELV) ELECTRONIC LOW VOLTAGE    |
|  | SURFACE MOUNTED WALL SCONCE                   |  | FAN / MOTOR                          |  | (MLV) MAGNETIC LOW VOLTAGE      |
|  | LINEAR LINE VOLTAGE FIXTURE                   |  | TRANSFORMER - 120V/12V OR 120V/24V   |  | SINGLE POLE SWITCH              |
|  | LINEAR LOW VOLTAGE FIXTURE                    |  | SWITCHED CLOCK RECEPTACLE            |  | (3) 3-WAY                       |
|  | VERTICALLY MOUNTED LINEAR LOW VOLTAGE FIXTURE |  | DUPLEX RECEPTACLE                    |  | (4) 4-WAY                       |
|  | RECESSED CEILING LINEAR LIGHT FIXTURE         |  | DUPLEX RECEPTACLE (WP) WEATHER PROOF |  | (J) JAMB                        |
|  | RECESSED WALL MOUNTED FIXTURE                 |  | CEILING FAN                          |  | MOTION SENSOR SWITCH            |
|  | CEILING MOUNTED MONOPOINT                     |  |                                      |  | SMART DIMMER ON LIGHTING SYSTEM |
|  | WALL OR BEAM MOUNTED MONOPOINT                |  |                                      |  | SMART SWITCH ON LIGHTING SYSTEM |
|  |   |  |                                      |  | LIGHTING CONTROL KEYPAD         |
|  |   |  |                                      |  | CONTROL SYSTEM LOAD ID NUMBER   |

**GENERAL NOTES:**

- REFER TO ARCHITECTURAL AND MILLWORK DRAWINGS FOR ADDITIONAL LIGHTING INFORMATION.

**KEY NOTES:**

- TBD.
- TBD.

**HOILAND STUDIOS**  
DESIGNED LIGHTING

www.hoilandstudios.com  
info@hoilandstudios.com  
847-989-2362

**OUTBUILDING**

3319 North Lake Drive,  
Milwaukee, WI, 53211

**GARAGE**

Scale: 1/4" = 1' - 0"

Date: 06/14/2022

**L1.2**