



CERTIFICATE OF APPROPRIATENESS APPLICATION FORM

Incomplete applications will not be processed for Commission review.
Please print legibly.

1. HISTORIC NAME OF PROPERTY OR HISTORIC DISTRICT: (if known)

Sherman Park Historic District - Townsend Elementary

ADDRESS OF PROPERTY:

3360 N. Sherman Blvd, Milwaukee, WI 53216-3559

2. NAME AND ADDRESS OF OWNER:

Name(s): Milwaukee Public Schools (Attn: Director Travis Luzney)

Address: 1124 N. 11th Street

City: Milwaukee

State: WI

ZIP: 53233

Email:

Telephone number (area code & number) Daytime: 414 283 4605

Evening:

3. APPLICANT, AGENT OR CONTRACTOR: (if different from owner)

Name(s): Milwaukee Public Schools (Project Manager - Juliana Pascucci)

Address:

City:

State:

ZIP Code:

Email: springj@milwaukee.k12.wi.us

Telephone number (area code & number) Daytime: 414 940 3927

Evening:

4. ATTACHMENTS: (Because projects can vary in size and scope, please call the HPC Office at 414-286-5712 for submittal requirements)

A. REQUIRED FOR MAJOR PROJECTS:

Photographs of affected areas & all sides of the building (annotated photos recommended)

Sketches and Elevation Drawings (1 full size and 1 reduced to 11" x 17" or 8 1/2" x 11")
A digital copy of the photos and drawings is also requested.

Material and Design Specifications (see next page)

B. NEW CONSTRUCTION ALSO REQUIRES:

Floor Plans (1 full size and 1 reduced to a maximum of 11" x 17")

Site Plan showing location of project and adjoining structures and fences

**PLEASE NOTE: YOUR APPLICATION CANNOT BE PROCESSED UNLESS
BOTH PAGES OF THIS FORM ARE PROPERLY COMPLETED
AND SIGNED.**

5. DESCRIPTION OF PROJECT:

Tell us what you want to do. Describe all proposed work including materials, design, and dimensions. Additional pages may be attached.


Townsend Elementary was constructed in 1927-28.
 Townsend Elementary wood window restoration and window replacement project.
 Sherman Side (west elevation) windows to be salvaged and restored - proposed scope of work for restoration:

1. proper handling of windows and window sashes for ACM joint sealant and glazing,
2. remove 4 washer bolts per window, wood plug holes,
3. remove all failed paint and joint sealant,
4. replace all Lexan with new 1/8" clear glass,
5. re-glaze all window lites,
6. replace all missing or rotted wood, sashes to be repaired, re-glued, resin filled where possible, or replaced with custom made white pine sash to match all existing profiles and sizes,
7. prime all bare wood and apply 2 coats finish to match existing color,
8. install new sash cords, reuse existing weights, install new weatherstripping and fix upper sash closed.

Townsend Street, 42nd St and W. Bernhard Place (North, east & south elevations) windows proposed to be replaced - proposed scope of work:

1. glass block to remain untouched,
2. replace double hung wood sash windows, frames and exterior brick mold trim with new single hung metal sash windows and frames, same size, configuration, muntin configuration and panning to match,
3. window to be a Graham 2200 Single hung with side load sash or approved equal from 4 approved manufactures (Graham Arch Prod Corp, EFCO Corp, Peerless Prod Inc or Traco)
4. muntin grids to be Graham model 6700 or approved equal, exterior and interior color to match exterior window color and interior glass muntin divider to be a dark and not aluminum color,
5. exterior metal panning to be Graham Waverly or approved equal to match existing brick mold profile,
6. exterior sill panning to be Graham Boylan or approved equal to match existing sill profile,
7. provide security screens on playground side windows (east elevation) and on south elevation windows that currently have security screens to protect glass from breakage from playground balls.

6. SIGNATURE OF APPLICANT:



 Signature

John A. Linn

 Please print or type name

4/21/17

 Date

This form and all supporting documentation **MUST** arrive by 12:00 noon on the deadline date established to be considered at the next Historic Preservation Commission Meeting. Any information not provided to staff in advance of the meeting will not be considered by the Commission during their deliberation. Please call if you have any questions and staff will assist you.

Hand Deliver or Mail Form to:
 Historic Preservation Commission
 City Clerk's Office
 200 E. Wells St. Room B-4
 Milwaukee, WI 53202

PHONE: (414) 286-5722

FAX: (414) 286-3004

www.milwaukee.gov/hpc

Or click the **SUBMIT** button to automatically email this form for submission.

SUBMIT

COA APPLICATION – TOWNSEND EXTERIOR WINDOW REPLACEMENT





W. Bernhard Place – South Elevation



W. Bernhard Place – South Elevation



W. Bernhard Place – South Elevation



W. Bernhard Place – South Elevation



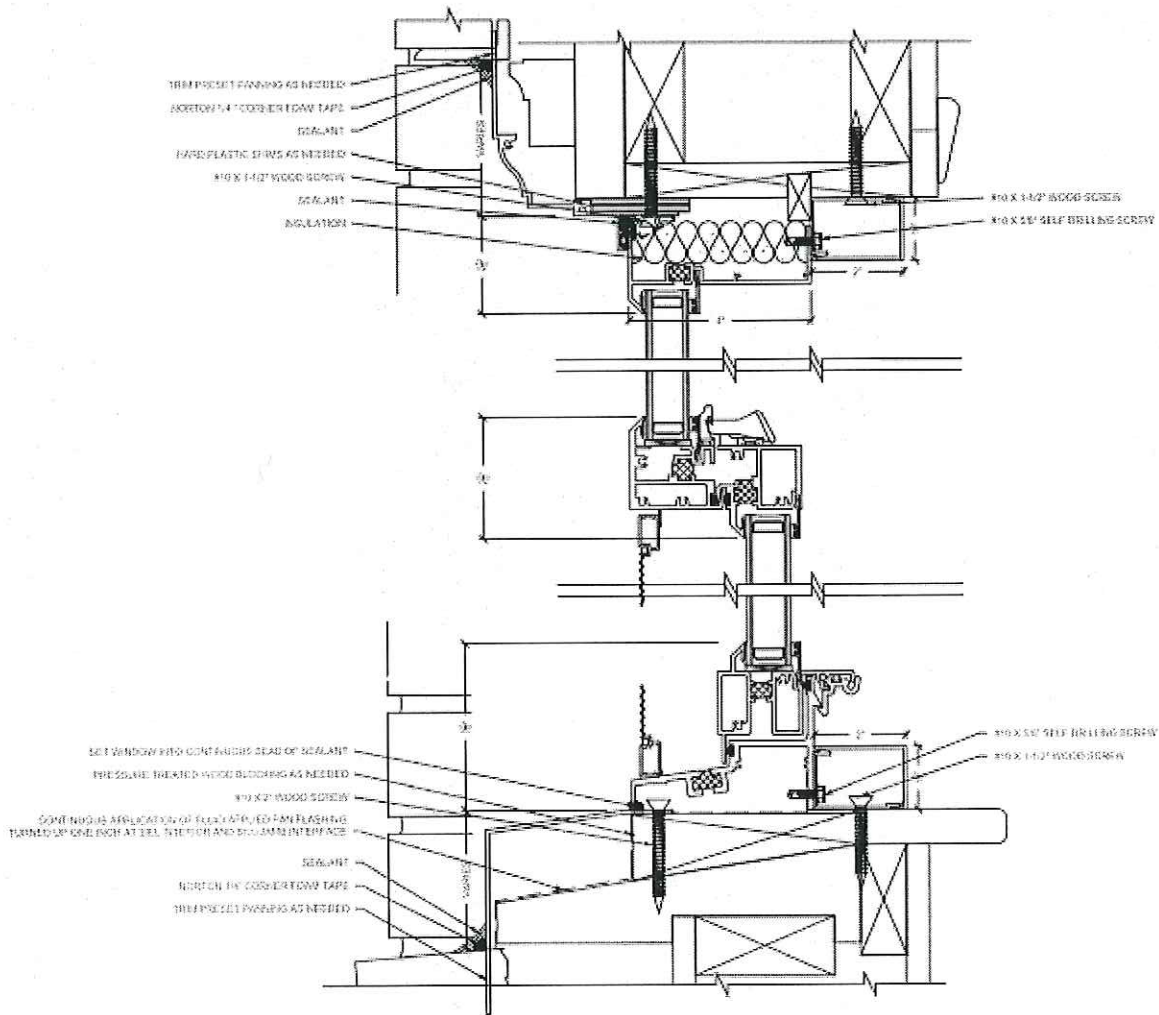
N. 42nd Street – Playground, East Elevation side



W. Townsend Street – North Elevation

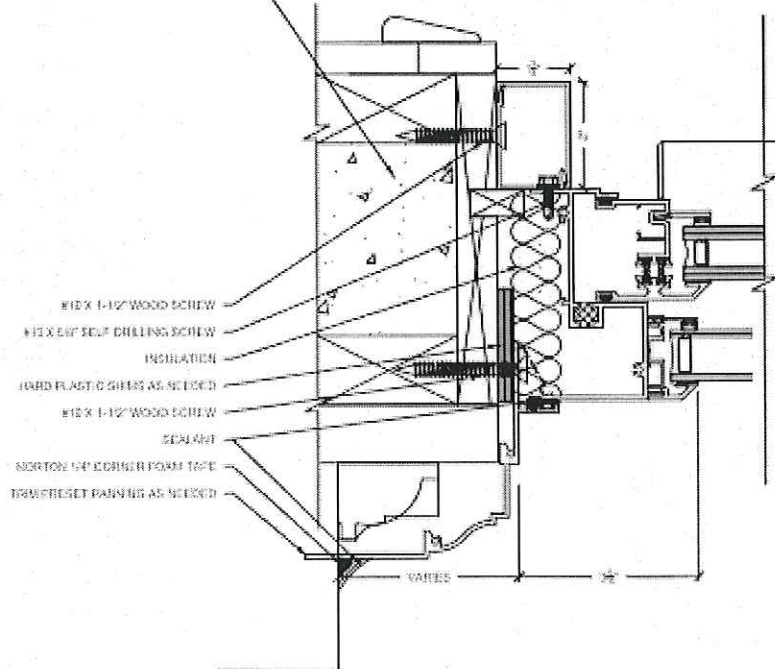


W. Townsend Street – North Elevation

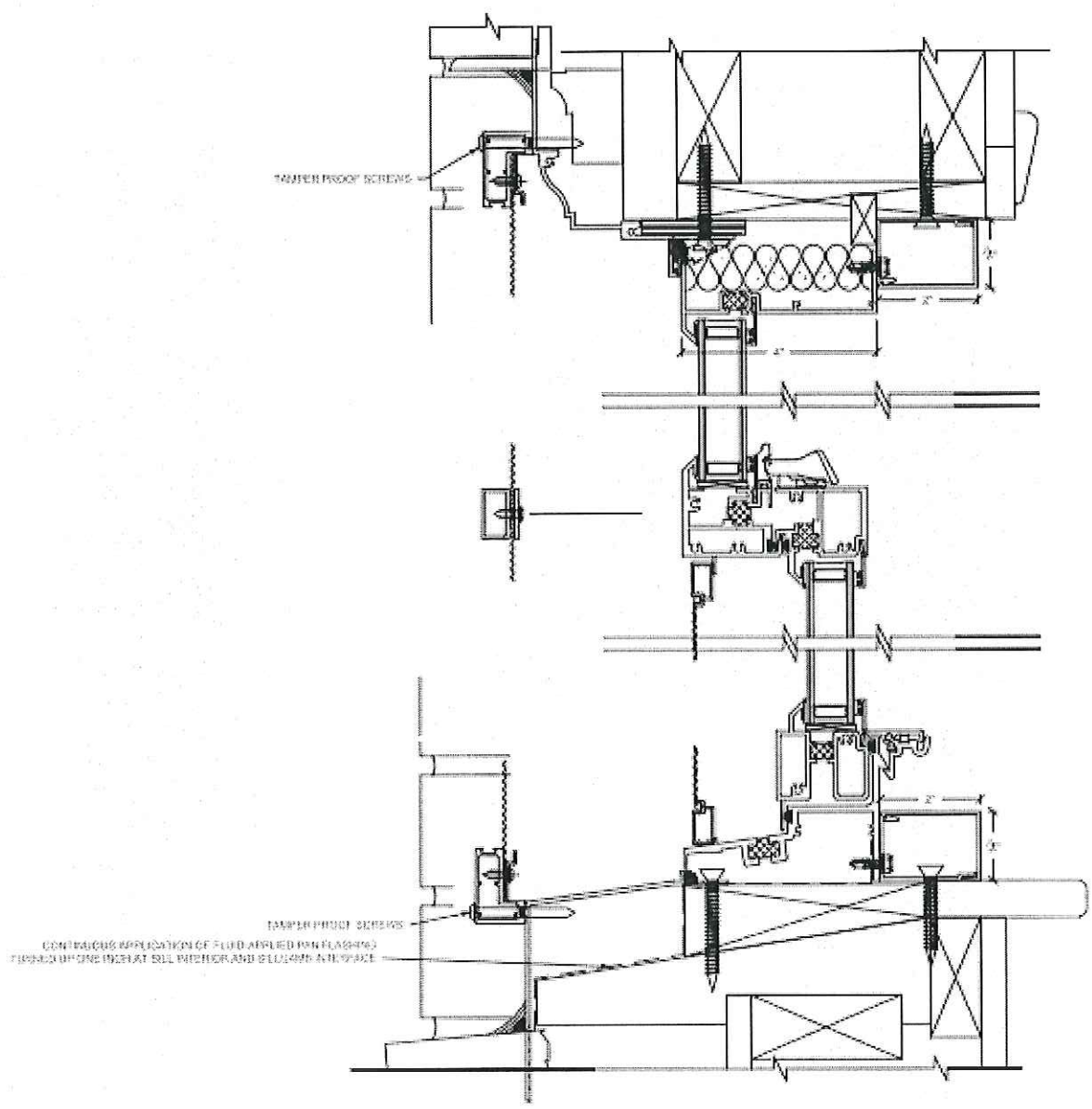


| | |
|-------------|--------------------|
| Detail Mark | 1 |
| Window | 2200 HSH |
| Window Type | Single Hung |
| Detail | Typical Head, Sill |

ALL CORNER WEIGHT JOINTS WITH LOW PRESSURE SPRAY
POLYURETHANE FOAM INSULATION SEALER

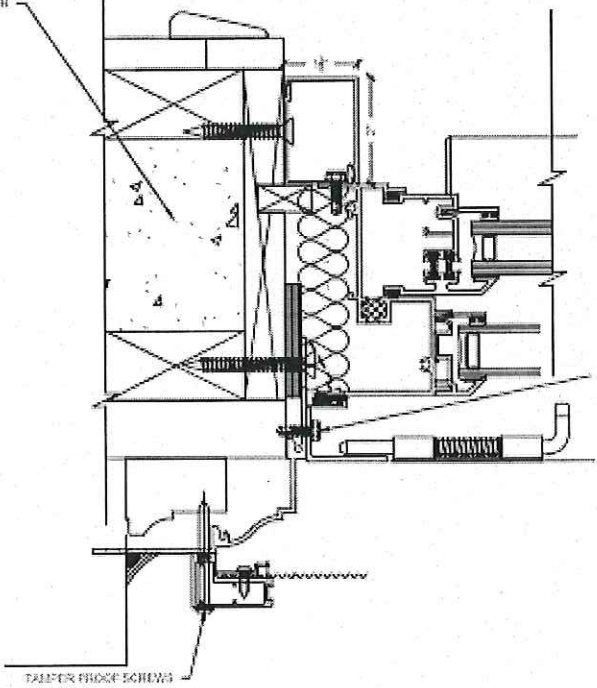


| | |
|--------------------|---------------------|
| Detail Mark | 1 |
| Window | 2200 HSH |
| Window Type | Single Hung |
| Detail | Typical Jamb |



| | |
|-------------|------------------------------------|
| Detail Mark | 1 |
| Window | 2200 HSH |
| Window Type | Single Hung |
| Detail | Typical Security Screen Head, Sill |

FIL COULTERS WEIGHT POCKET WITH LOW PRESSURE SPRAY
 POLYURETHANE FOAM INSULATION SPANER



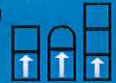
WITH A 5/8\"/>

DETAIL FOR THOSE SCREENS

| | |
|-------------|------------------------------|
| Detail Mark | 2 |
| Window | 2200 HSH |
| Window Type | Single Hung |
| Detail | Typical Security Screen Jamb |

2200 SERIES DATA SHEET

OPERATION



| TYPE | AAMA RATING & TEST SIZE | AIR (cfm/ft ²) at 50 mph | WATER (psf) | DESIGN PRESSURE (psf) | STRUCTURAL OVERLOAD (psf) | U-VALUE (BTU/hr/ft ² /°F) ¹ | CRF | STC |
|--------------------------|-------------------------|--------------------------------------|-------------|-----------------------|---------------------------|---|-----|---------|
| SINGLE HUNG SIDE LOAD | AW-PG65 60 x 99 | 0.12 | 12.11 | 65.16 | 97.74 | 0.38 – 0.44 | 44 | 31 - 36 |
| | AW-PG100 60 x 99 | | | 100.25 | 150.38 | 0.38 – 0.44 | 44 | 31 - 36 |

¹U-values will vary depending upon glazing selected

2200 SERIES QUICK VIEW:

A single-hung window with side-load sash that mulls to 4" frame products. Sash easily removes from frame for cleaning.

STANDARD FEATURES

- Block & tackle balances for superior operation
- Mulls to 4" frame fixed and operable products
- Sash easily removes from frame for maintenance & cleaning
- Removable take-out clips to prevent unauthorized sash removal
- Full-length extruded lift handles

OPTIONAL FEATURES

- Applied-profile muntin grids
- Dual-glazed split sash to permit high-performance glazing combinations
- Dual window available in some configurations
- Extruded automatic sill latches
- High-performance balances up to 120 lbs. per sash (larger sightlines at jamba)
- Exterior-beveled (putty) glazing leg on historic models
- True colonial muntins
- White bronze hardware



Window series: 2200 Single Hung – General Specifications & Details

- Nominal Frame/Sill Wall Thickness: 0.080/0.125"
- Applications: Industrial, Educational, Hospitals, Acoustical, and Historic
- Mulls to operable and fixed units with 4" frame depth
- Max. Test size: 5'0" x 8'3"
- Glazing thickness: Single lite to 1/4"; insulating to 1"; bead and marine-glazed options available
- Glazing Options:
 - Single Glazed: Available
 - Insulating: 1" IG available; also dual glazed options
- Dual-Glazed Option:
 - Guardian™ option with interior access panels for cleaning and maintenance
- Muntins: Grids between lites of IG or dual-glazed unit or exterior applied in conjunction with 1/2" IG unit or 1" IG. True colonial muntins with contour bead or flat bead with 1" IG

- Curved Shapes: Radius tops and arches available with mullied fixed units (Series 1400)
- Maximum Sash Weight: Standard balancing of both sash to 80 lbs. Optional heavy-duty system to 120 lbs. Depends on height-to-width ratio (please contact factory)
- Finish Options:
 - AAMA 2603 – Standard acrylic or polyester
 - AAMA 2604 – 2 coat 50% fluoropolymer
 - AAMA 2605 – 2 coat fluoropolymer 70% kynar
 - Powder Coat
 - Anodized
- Hardware:
 - White bronze hardware
- Accessories:
 - Frame Family: 4"
 - Fixed Lite Option System: 1400
 - Mullions:
 - Stacking: Integral & fixed-stack mull
 - Side: 3-piece-mull
 - Panning/Trims: Available
 - Receptor Systems: Available
 - Screen: Security/vandal screen available

Our products are tested to the standards of and certified by the American Architectural Manufacturer's Association and the National Fenestration Rating Council.



Check website for most current information including other installation and hardware options: www.grahamwindows.com
 1551 Mt. Rose Avenue, York, Pennsylvania 17403-2909 (800) 755-6274 (717) 849-8100

Muntin Grids – Historic Applications

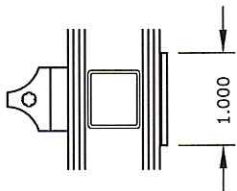


Series: Accessories Manufacturing Code: GR04

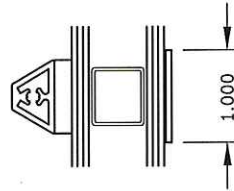
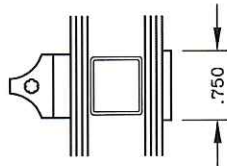
Drawing 1/2 Scale – For Custom Size Drawing Contact Graham

Note: Sealant Not Shown On Details. Consult Technical Services At Factory For Sealing Procedures.

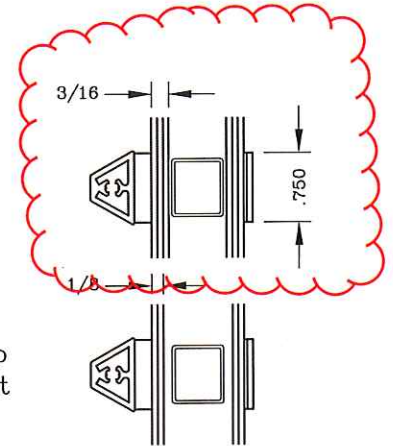
Model 6700



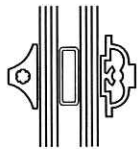
Triple
With Concave
1" IG Unit



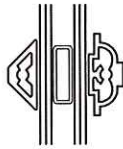
Triple
With Trap
1" IG Unit



Model 2575H & 2275H

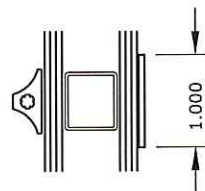


Triple With
Concave Exterior
Profile Interior
5/8" IG Unit

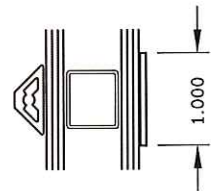


Triple With
Trap Exterior
Profile Interior
1/2" IG Unit
1/8" Glass Min.

Model 2575H, 2275H, 1450H, & 1550H

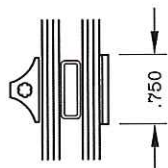


Triple
With Concave
1" IG Unit

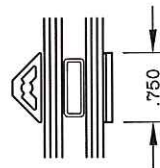


Triple
With Trap
1" IG Unit

Model 2075H



Triple
With Concave
5/8" IG Unit



Triple
With Trap
5/8" IG Unit

Preset Contoured Panning Contoured

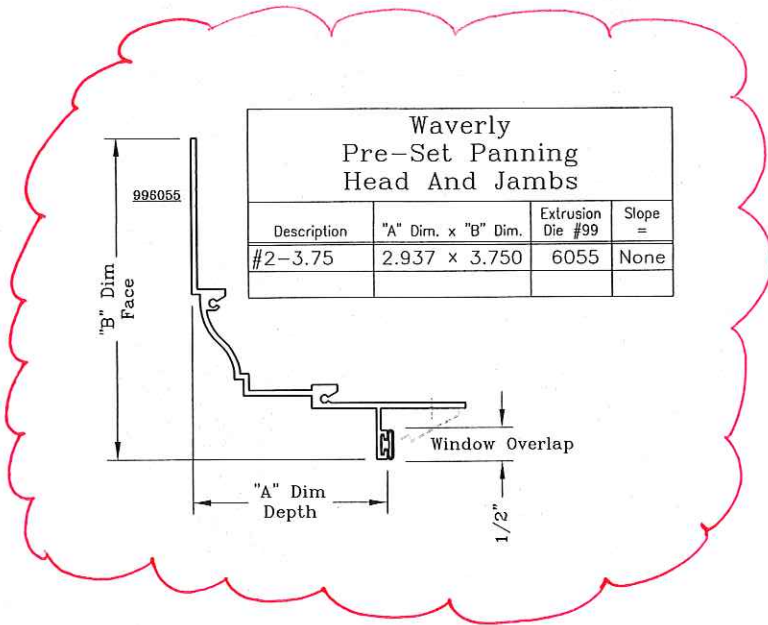


Series: Accessories Manufacturing Code: PPN04

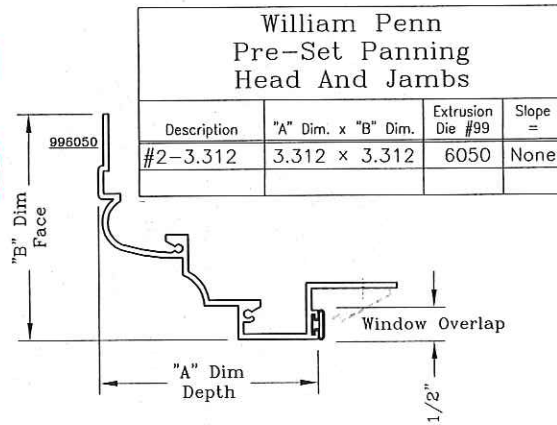
Drawing 3/8 Scale - For Custom Size Drawing Contact Graham

Note: Sealant Not Shown On Details. Consult Technical Services At Factory For Sealing Procedures.

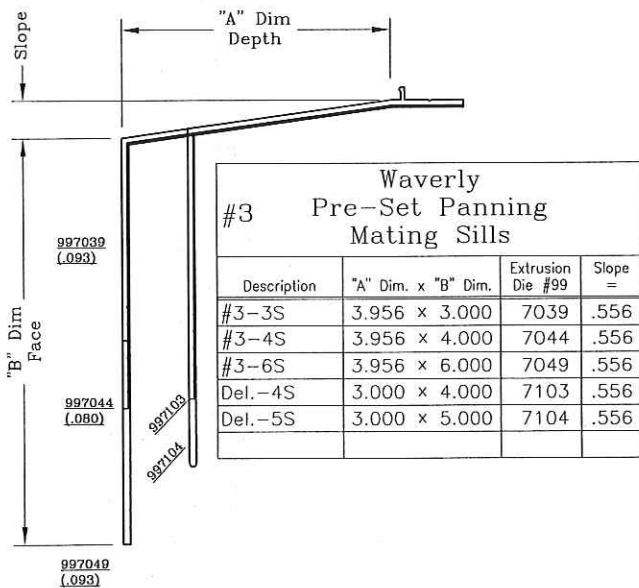
Note: Pre-Set Panning Requires The Use Of Equal Leg Sill On Window



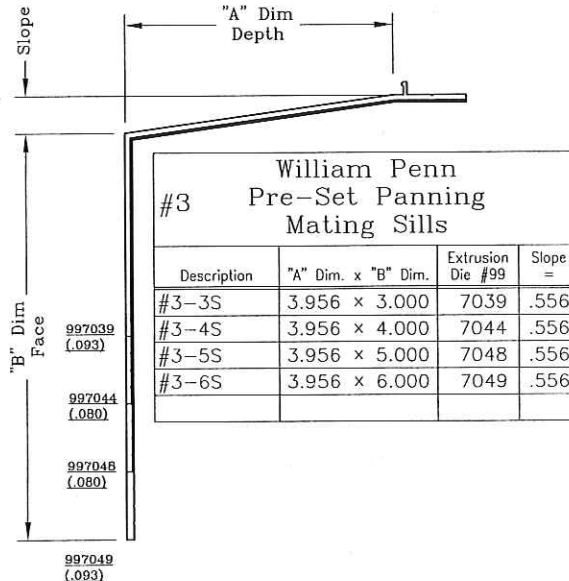
| Waverly Pre-Set Panning Head And Jamb | | | |
|---|---------------------|-------------------|---------|
| Description | "A" Dim. x "B" Dim. | Extrusion Die #99 | Slope = |
| #2-3.75 | 2.937 x 3.750 | 6055 | None |



| William Penn Pre-Set Panning Head And Jamb | | | |
|--|---------------------|-------------------|---------|
| Description | "A" Dim. x "B" Dim. | Extrusion Die #99 | Slope = |
| #2-3.312 | 3.312 x 3.312 | 6050 | None |



| #3 Waverly Pre-Set Panning Mating Sills | | | |
|---|---------------------|-------------------|---------|
| Description | "A" Dim. x "B" Dim. | Extrusion Die #99 | Slope = |
| #3-3S | 3.956 x 3.000 | 7039 | .556 |
| #3-4S | 3.956 x 4.000 | 7044 | .556 |
| #3-6S | 3.956 x 6.000 | 7049 | .556 |
| Del.-4S | 3.000 x 4.000 | 7103 | .556 |
| Del.-5S | 3.000 x 5.000 | 7104 | .556 |



| #3 William Penn Pre-Set Panning Mating Sills | | | |
|--|---------------------|-------------------|---------|
| Description | "A" Dim. x "B" Dim. | Extrusion Die #99 | Slope = |
| #3-3S | 3.956 x 3.000 | 7039 | .556 |
| #3-4S | 3.956 x 4.000 | 7044 | .556 |
| #3-5S | 3.956 x 5.000 | 7048 | .556 |
| #3-6S | 3.956 x 6.000 | 7049 | .556 |

Preset Contoured Panning Contoured



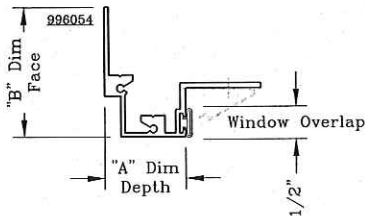
Series: Accessories Manufacturing Code: PPN06

Drawing 3/8 Scale - For Custom-Size Drawing Contact Graham

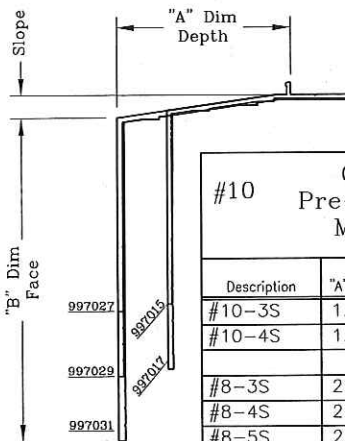
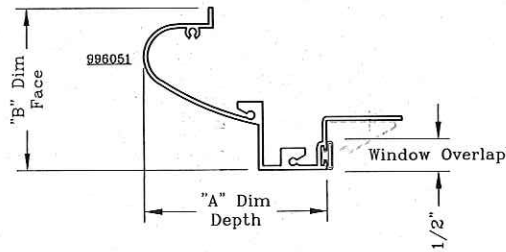
Note: Sealant Not Shown On Details. Consult Technical Services At Factory For Sealing Procedures.

Note: Pre-Set Panning Requires The Use Of Equal Leg Sill On Window

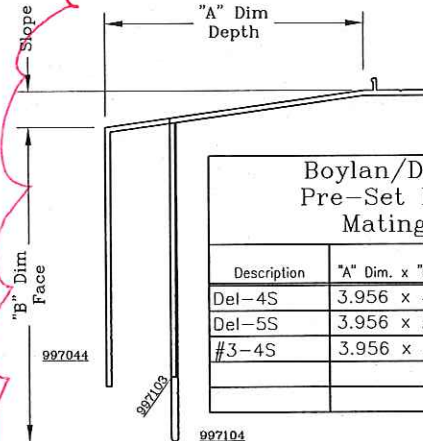
| Centennial Pre-Set Panning Head And Jamb | | | |
|--|---------------------|----------------------|------------|
| Description | "A" Dim. x "B" Dim. | Extrusion Die #99 | Slope = |
| Centennial | 1.312 x 2.000 | 6054 | None |



| Charlestown Pre-Set Panning Head And Jamb | | | |
|---|---------------------|----------------------|------------|
| Description | "A" Dim. x "B" Dim. | Extrusion Die #99 | Slope = |
| Charlestown | 2.875 x 2.500 | 6051 | None |



| #10 Centennial Pre-Set Panning Mating Sills | | | |
|---|---------------------|----------------------|------------|
| Description | "A" Dim. x "B" Dim. | Extrusion Die #99 | Slope = |
| #10-3S | 1.698 x 3.000 | 7015 | .239 |
| #10-4S | 1.698 x 4.000 | 7017 | .239 |
| #8-3S | 2.475 x 3.000 | 7027 | .348 |
| #8-4S | 2.475 x 4.000 | 7029 | .348 |
| #8-5S | 2.475 x 5.000 | 7031 | .348 |



| Boylan/Delaware Pre-Set Panning Mating Sill | | | |
|---|---------------------|----------------------|------------|
| Description | "A" Dim. x "B" Dim. | Extrusion Die #99 | Slope = |
| Del-4S | 3.956 x 4.000 | 7103 | .415 |
| Del-5S | 3.956 x 5.000 | 7104 | .415 |
| #3-4S | 3.956 x 4.000 | 7044 | .559 |