

16'-11" 4'-8" 16'-8" 21'-2" 19'-4"



32'-0"

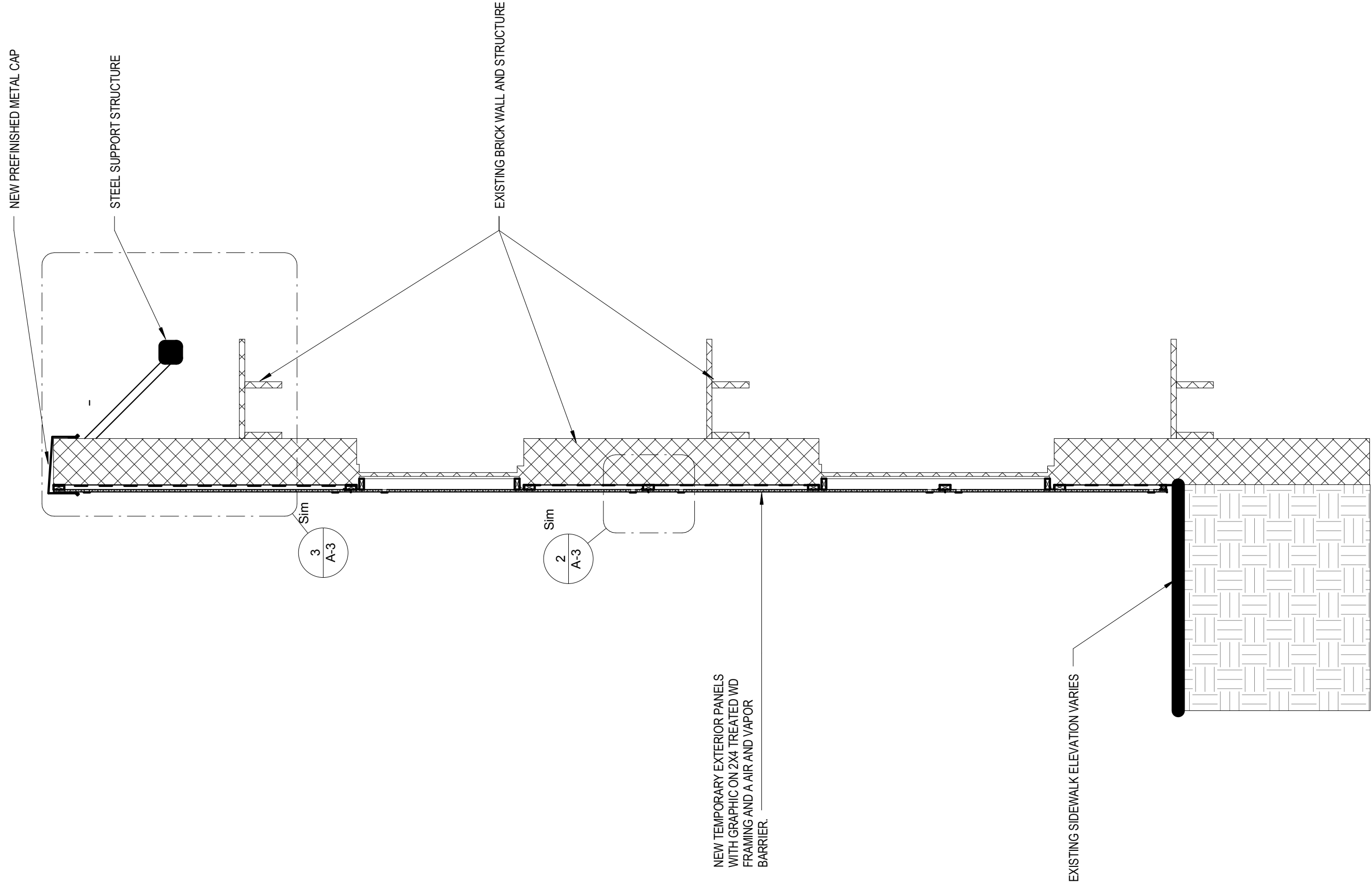


1 BROADWAY ELEVATION
2.0 SCALE 3/16"=1'-0"

Broadway Facade
North Broadway
Milwaukee, WI
| October 17, 2016

2.0





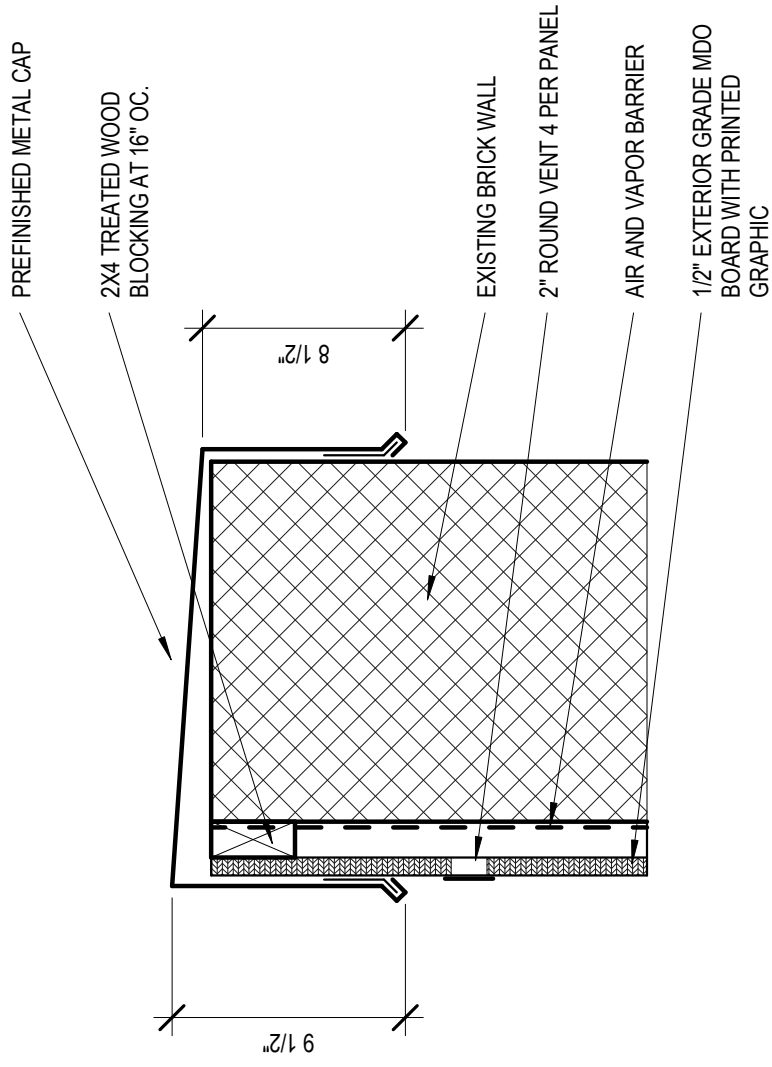
Title WALL SECTION

Project WISCONSIN & BROADWAY
 Project Number 13-103
 Date 10/17/16
 Drawn by Author

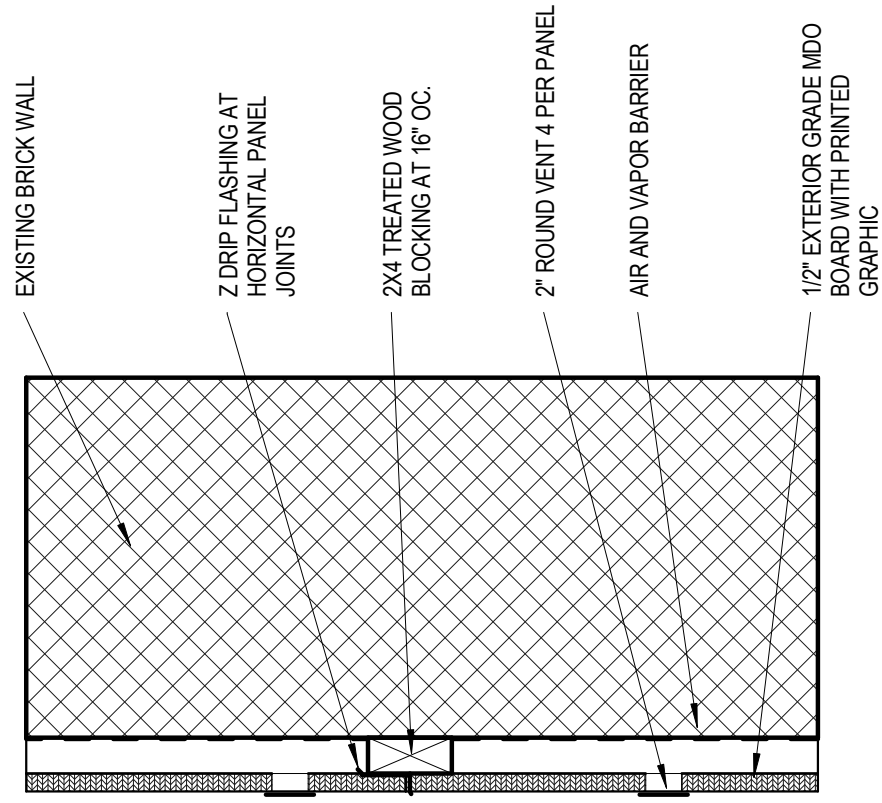
Scale 3/8" = 1'-0"

Drawing No.

A-2



2 PARAPET CAP DETAIL
1 1/2" = 1'-0"



3 WALL SECTION @ NEW TEMPORARY
FACADE1 - Callout 3
1 1/2" = 1'-0"