

SITE PLAN

Scale 1" = 100'-0"



HNBG
HNEDAK BOBO GROUP
 Architecture Interiors
 104 South Forest St., Memphis, TN 38103-2906
 phone 901.525.2557 fax 901.526.0869 www.hnbg.com

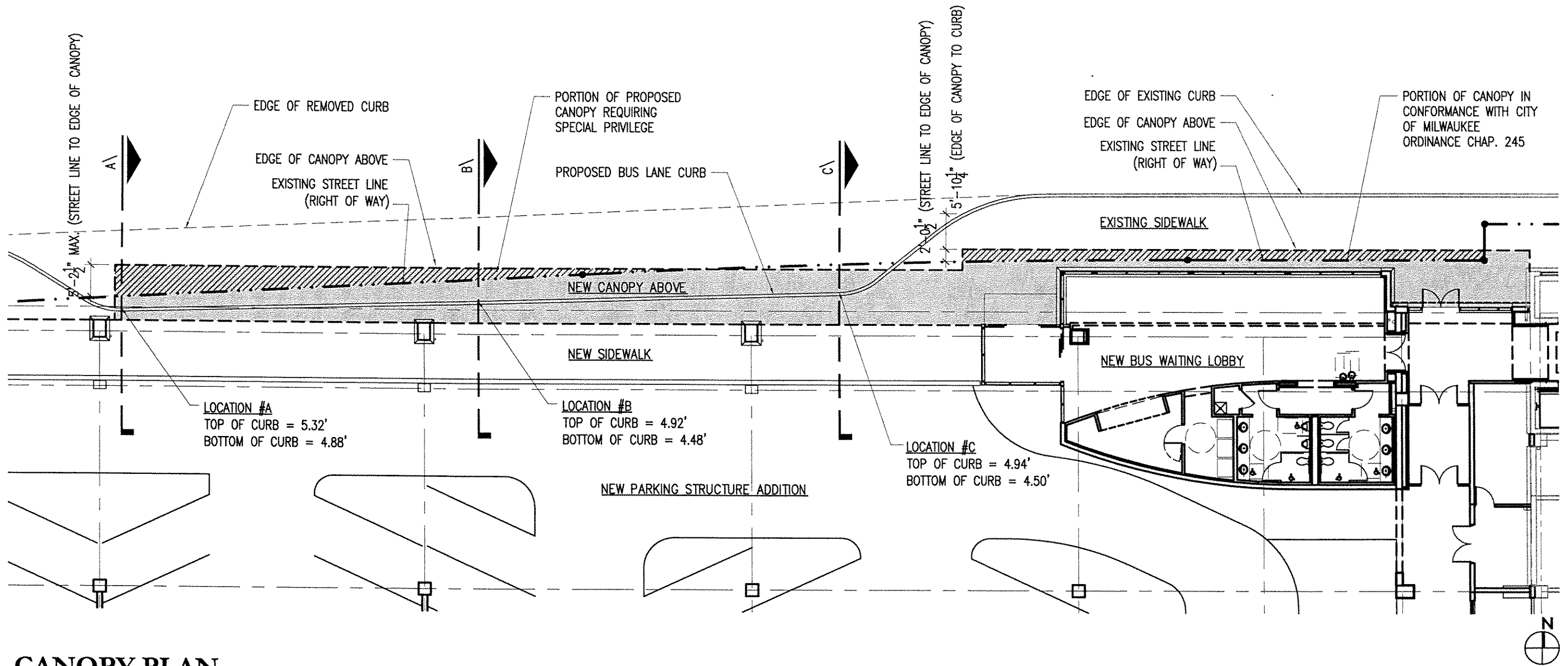
in association with:
 Engberg Anderson
 611 North Broadway
 Milwaukee, Wisconsin 53202
 www.eadp.com
 Ph 414.944.9000 Fax 414.944.9100

Project Name :
Potawatomi Bingo Casino - Parking Structure Addition
Forest County Potawatomi Community of Wisconsin
 1721 West Canal Street
 Milwaukee, WI, 53233

PETITION FOR SPECIAL PRIVILEGE AMENDMENT

Project Number : 031318.08
 Latest Revision Date :
 Date : 03-07-07
 Drawing Number : 1

WEST POTAWATOMI CIRCLE



CANOPY PLAN

Scale 1/16" = 1'-0"

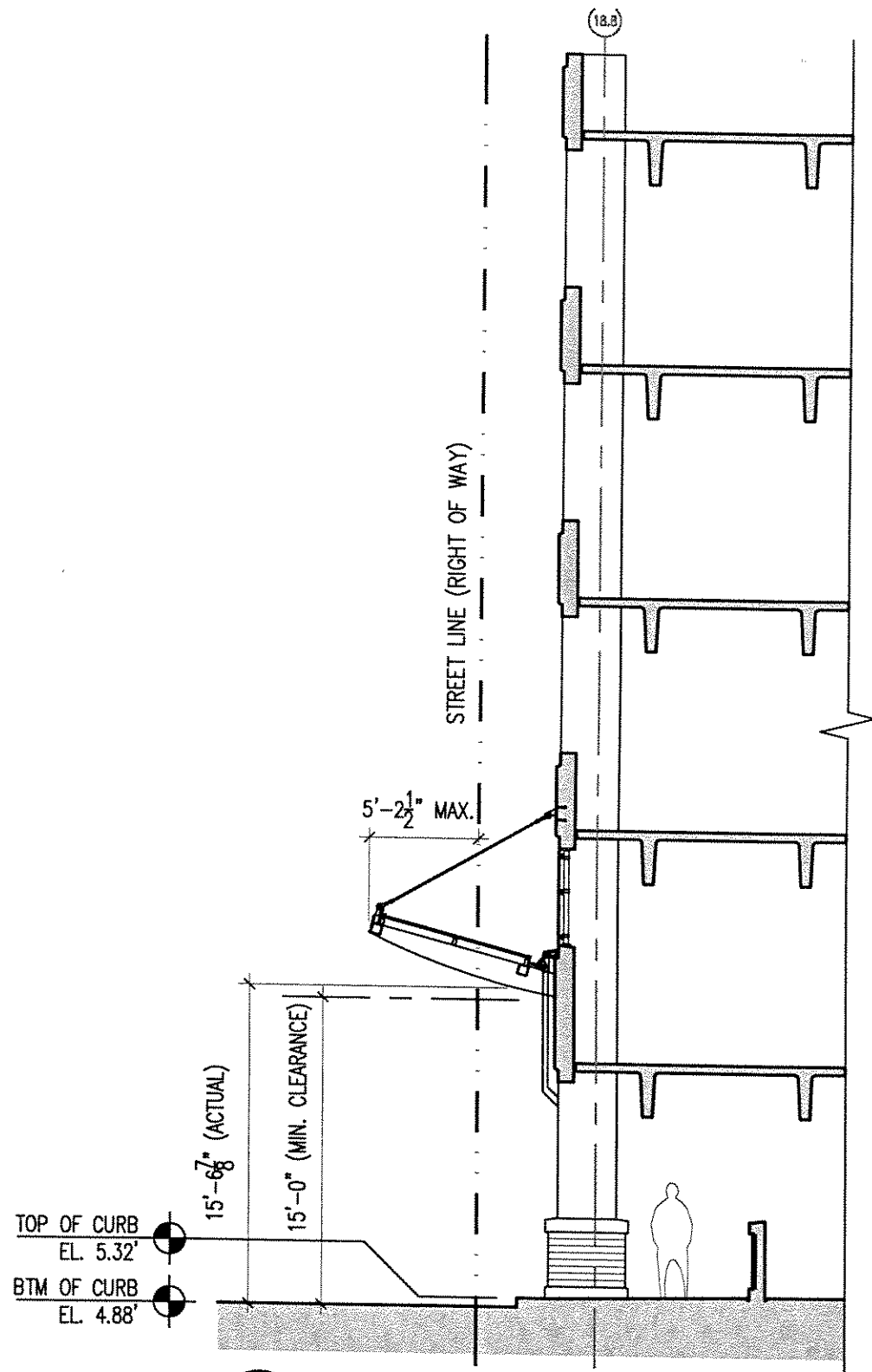
Hnedak Bobo Group
Architecture Interiors
104 South Front St., Memphis, TN 38103-2906
phone 901.525.2557 fax 901.525.9889 www.hbg.com

in association with:
Engberg Anderson
Design Partnership, Inc.
611 North Broadway
Milwaukee, Wisconsin 53202
www.eadp.com
Ph 414.944.9000 Fax 414.944.9100

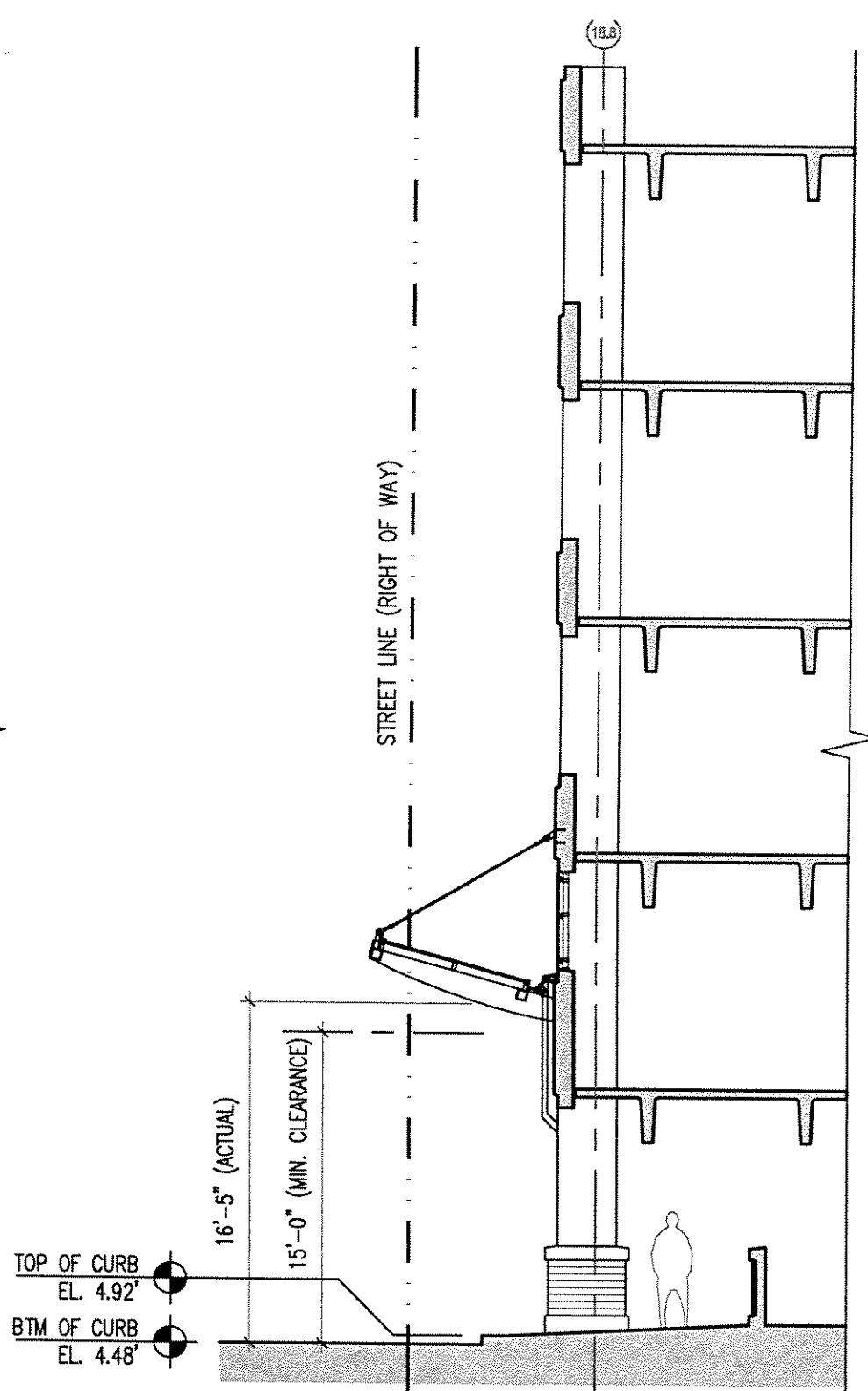
Project Name:
Potawatomi Bingo Casino - Parking Structure Addition
Forest County Potawatomi Community of Wisconsin
1721 West Canal Street
Milwaukee, WI, 53233

PETITION FOR SPECIAL PRIVILEGE AMENDMENT

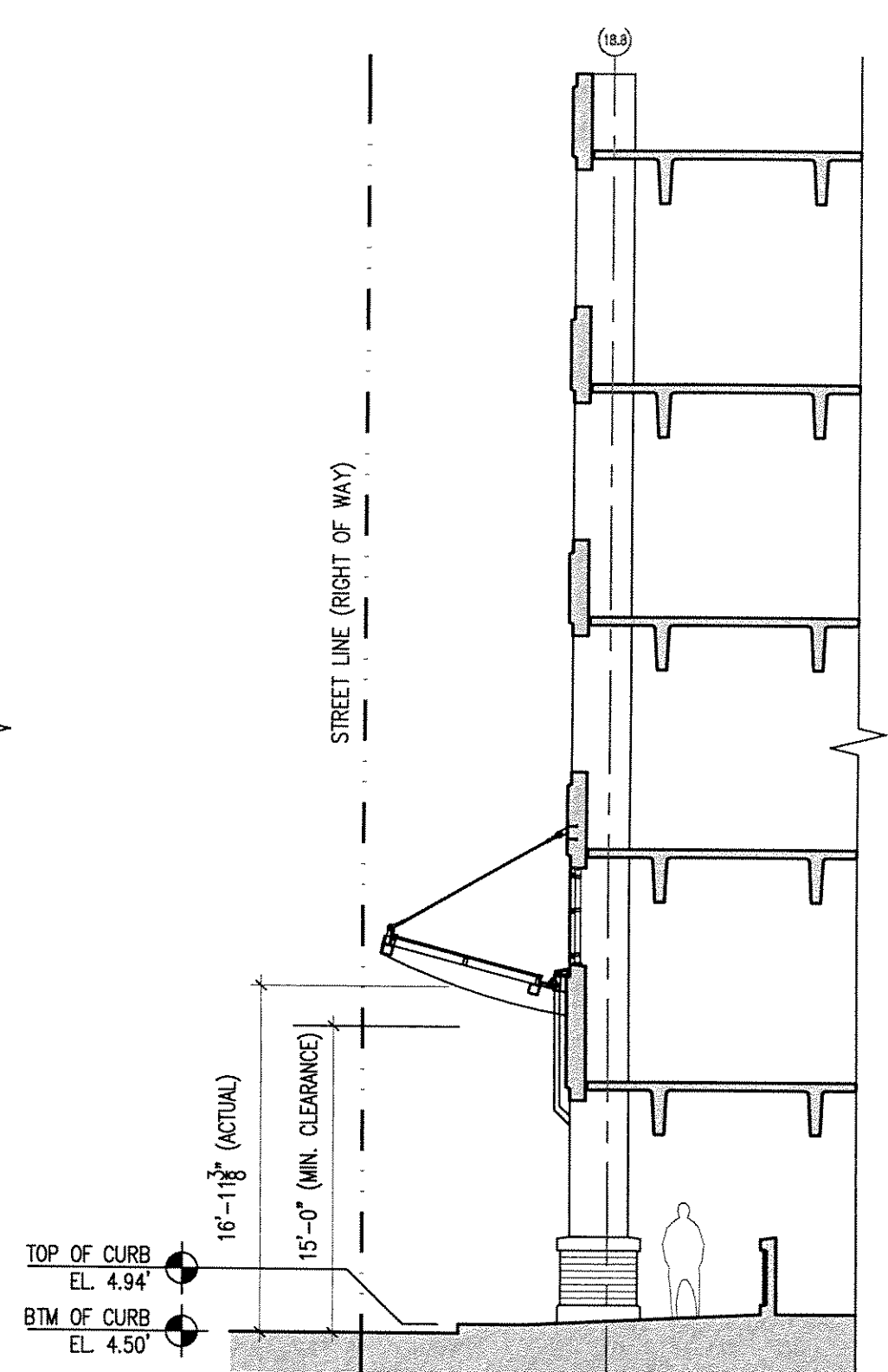
Project Number : 031318.08
Latest Revision Date :
Date : 03-07-07
Drawing Number : 2



A Canopy Section
SCALE: 1/8" = 1'-0"



B Canopy Section
SCALE: 1/8" = 1'-0"



C Canopy Section
SCALE: 1/8" = 1'-0"

CANOPY SECTIONS

HNBG
HNEDAK BOBO GROUP
Architecture Interiors
104 South Front St. Memphis, TN 38103-2936
phone 901.525.2537 fax 901.529.8889 www.hnbgo.com

in association with:
Engberg Anderson
611 North Broadway
Milwaukee, Wisconsin 53202
www.eadp.com
PH 414 944 9000 FX 414 944 9100

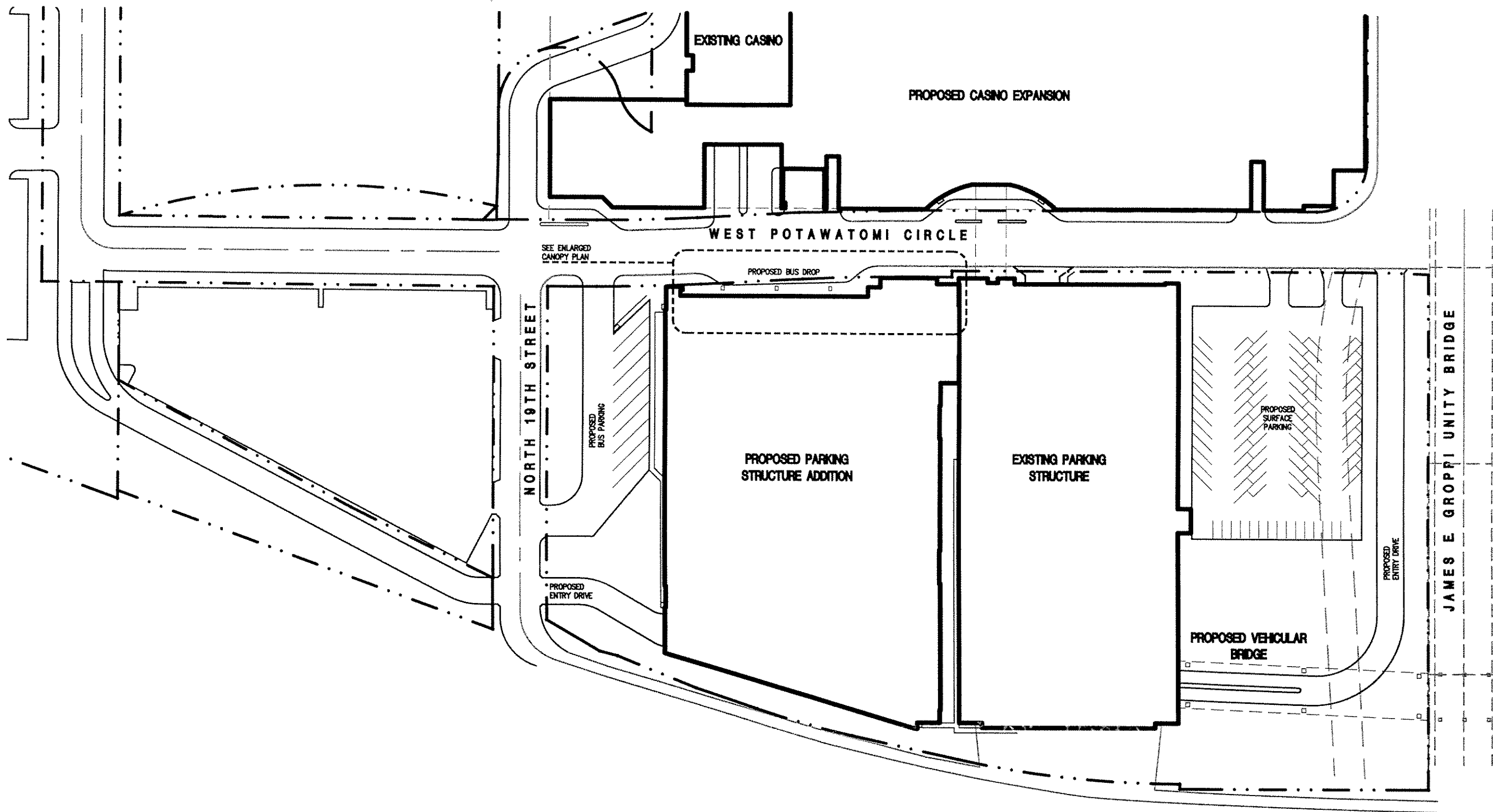
Project Name :
Potawatomi Bingo Casino - Parking Structure Addition
Forest County Potawatomi Community of Wisconsin
1721 West Canal Street
Milwaukee, WI, 53233

PETITION FOR SPECIAL PRIVILEGE AMENDMENT

Scale 1/8" = 1'-0"

Project Number : 031318.08
Latest Revision Date :
Date :
Drawing Number :

03-07-07



SITE PLAN



Scale 1" = 100'-0"

HNBG
HNEDAK BOBO GROUP
 Architecture Interiors
 104 South Front St. Memphis, TN 38103-2896
 phone 901.525.2557 fax 901.529.0889 www.hnbg.com

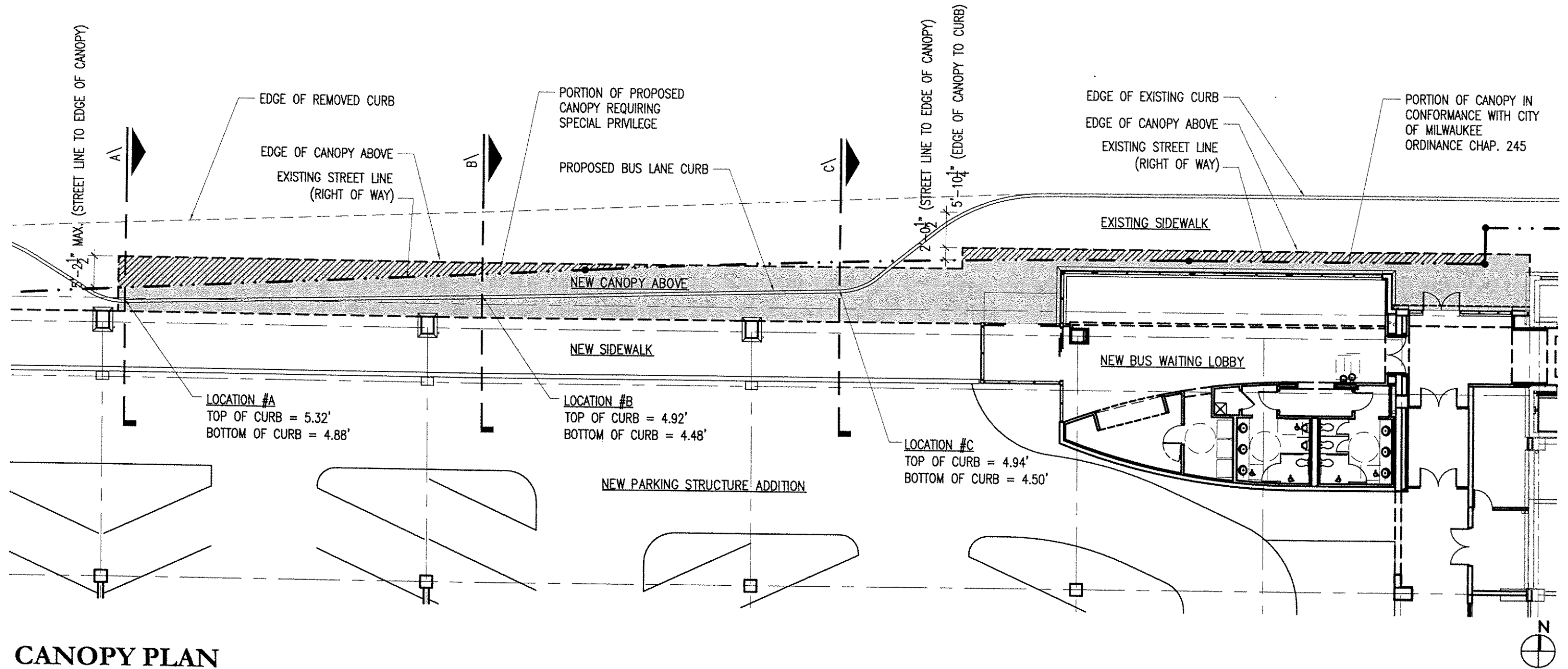
in association with:
 Engherg Anderson
 Design Partnership, Inc.
 611 North Broadway
 Milwaukee, Wisconsin 53202
 www.eadp.com
 Ph 414.944.9000 Fax 414.944.9100

Project Name :
Potawatomi Bingo Casino - Parking Structure Addition
Forest County Potawatomi Community of Wisconsin
 1721 West Canal Street
 Milwaukee, WI, 53233

PETITION FOR SPECIAL PRIVILEGE AMENDMENT

Project Number : 031318.08
 Latest Revision Date :
 Date : 03-07-07
 Drawing Number : 1

WEST POTAWATOMI CIRCLE



CANOPY PLAN

HBC
HNEDEK BOBO GROUP
 Architecture Interiors
 104 South First St. Memphis, TN 38103-2906
 phone 901.525.2517 fax 901.529.0889 www.hbc.com

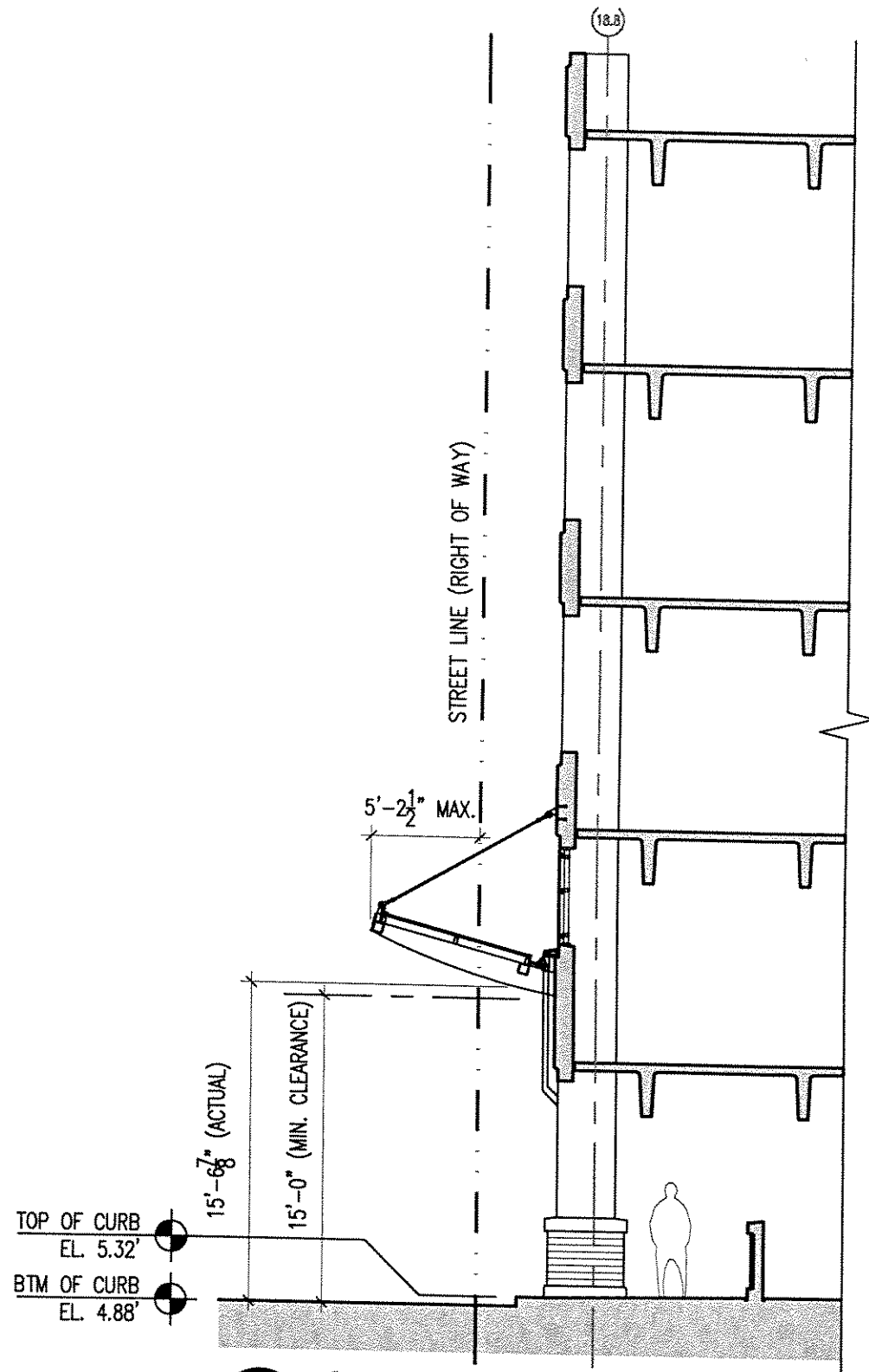
in association with:
Engberg Anderson Design Partnership, Inc.
 611 North Broadway
 Milwaukee, Wisconsin 53202
 www.eadp.com
 Ph 414 944 9000 Fx 414 944 9100

Project Name:
Potawatomi Bingo Casino - Parking Structure Addition
Forest County Potawatomi Community of Wisconsin
 1721 West Canal Street
 Milwaukee, WI, 53233

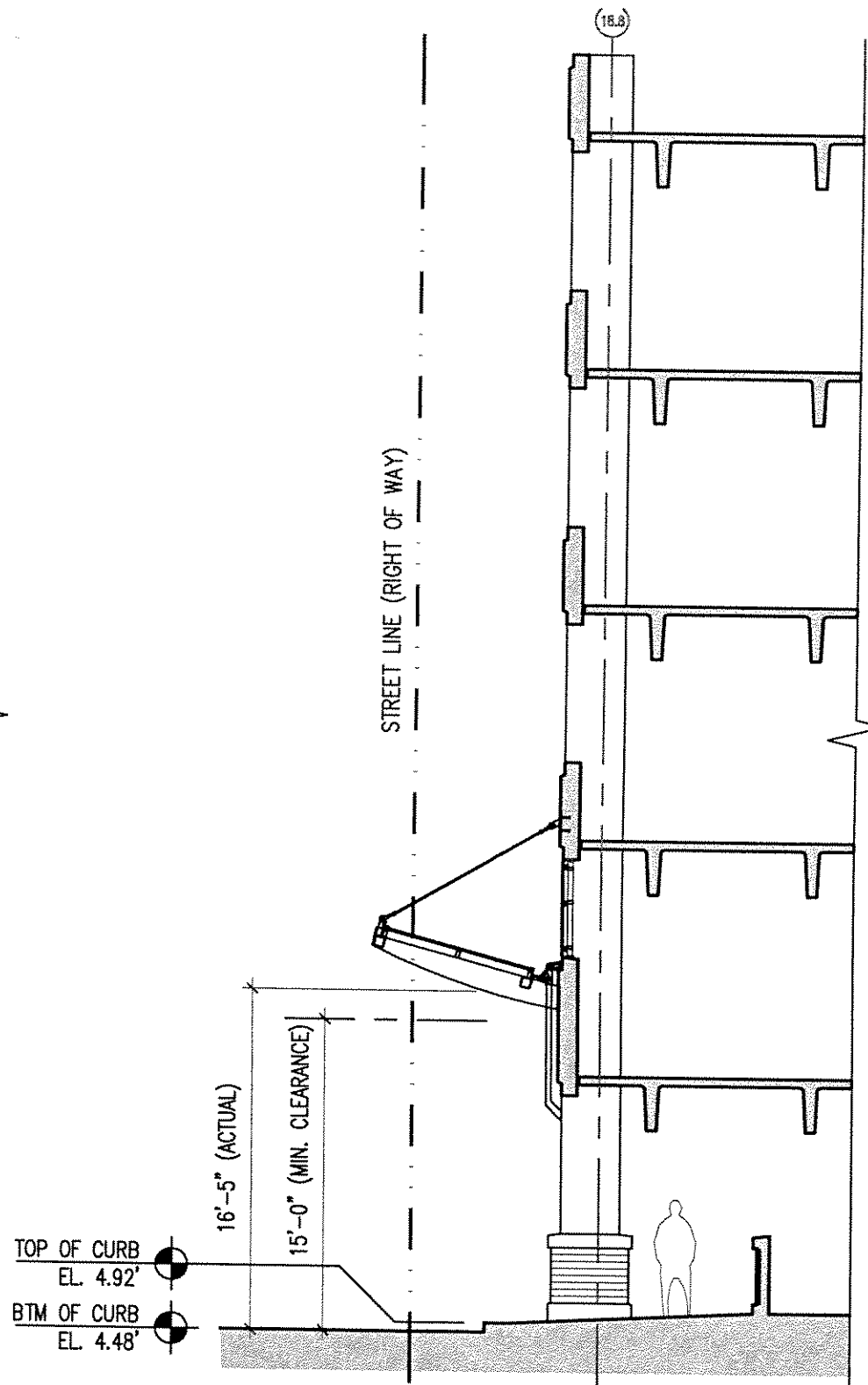
PETITION FOR SPECIAL PRIVILEGE AMENDMENT

Scale 1/16" = 1'-0"

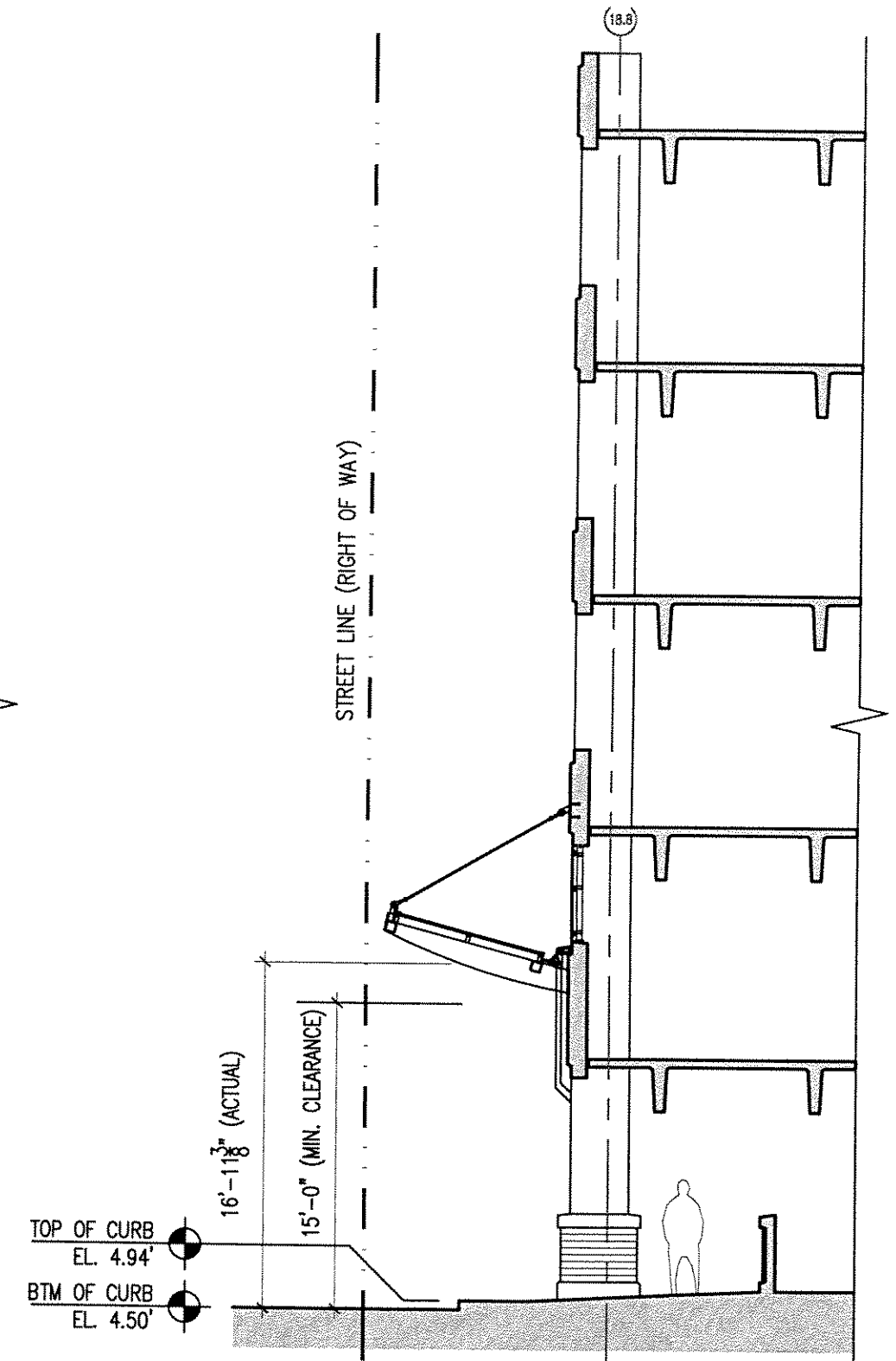
Project Number : 031318.08
 Latest Revision Date :
 Date : 03-07-07
 Drawing Number : 2



A Canopy Section
SCALE: 1/8" = 1'-0"



B Canopy Section
SCALE: 1/8" = 1'-0"



C Canopy Section
SCALE: 1/8" = 1'-0"

CANOPY SECTIONS

HNBG
HNEDAK BOBO GROUP
Architecture Interiors
104 South Front St. Memphis, TN 38103-2066
phone 901.525.2557 fax 901.525.0889 www.hnbg.com

in association with:
Engberg Anderson
Design Partnership, Inc.
611 North Broadway
Milwaukee, Wisconsin 53202
www.eadp.com
Ph 414.944.9300 Fax 414.944.9100

Project Name:
Potawatomi Bingo Casino - Parking Structure Addition
Forest County Potawatomi Community of Wisconsin
1721 West Canal Street
Milwaukee, WI, 53233

PETITION FOR SPECIAL PRIVILEGE AMENDMENT

Scale 1/8" = 1'-0"
Project Number: 031318.08
Latest Revision Date:
Date: 03-07-07
Drawing Number: 3