

NW 18-7-22

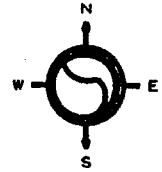
ATLAS P. 310

310

310-09

SCALE 1" = 80'

FLORENCE INV. CO'S. SUBD. NO. 1



W BURLEIGH ST

N 23RD ST

N 22ND ST

	2229	2225	2221	31.06	2211	
	32.38	125.06	125.07	32.34	32.34	3079
	30 100	20	32	15	60	3075
	30 0862	9	125.09	30 0865	125.07	3071
	62	8	125.11	30 0865	32.34	3067
	17	310-0860-100-6	125.12	310-0846	125.11	3063
	16	125.13	310-0847	125.12	125.13	3059
	15	310-0858-100	125.15	310-0848-100-6	125.13	3055
	14	125.16	310-0850	125.15	125.15	3051
	13	310-0856	125.18	310-0851	125.16	3047
	12	310-0855	125.19	310-0852	125.18	3043
	11	310-0854	125.21	310-0853	125.19	3039
	20	125.21	125.23	30 30	125.21	3035
	19	310-0159	125.24	310-0142	125.23	3031
	18	310-0158	125.26	310-0143	125.24	3027
	17	310-0157	125.28	310-0144	125.26	3023
	16	310-0156	125.29	310-0145	125.28	3019
	15	310-0155	125.31	310-0146	125.29	3015
	14	310-0154	125.33	125.33	125.31	3011
	13	125.34	310-0147-100-X	125.34	125.33	3007
	12	310-0153-100-2	125.36	310-0149	125.34	3005
	11	310-0151-100-1	125.38	125.36	125.36	3001
	36.63	36.66	36.66	36.66	36.66	6.69
	3002	3000	3000	3000	3000	3001

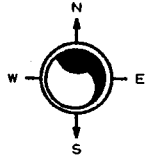
W CHAMBERS ST

BADGER STATE PARK

NW 18-7-22
ATLAS P. 310

310

310-17
SCALE 1" = 80'

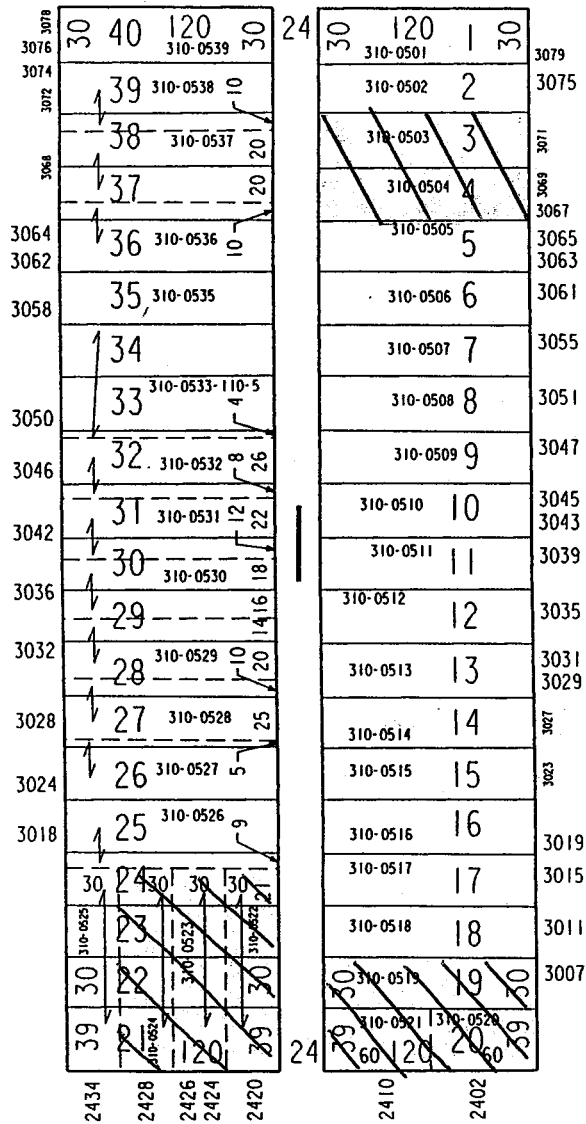


CAWKER'S SUBDIVISION "B"

W BURLEIGH ST

N 24TH PL

N 24TH ST



W CHAMBERS ST

N. W. 18-7-22
ATLAS P. 310

CAWKER'S SUBD. "B"

310-23

W. CHAMBERS

2477 2471A
2475 30

2465 2461 2457 2453
2463 2459 2455 2451

ST.



ST.

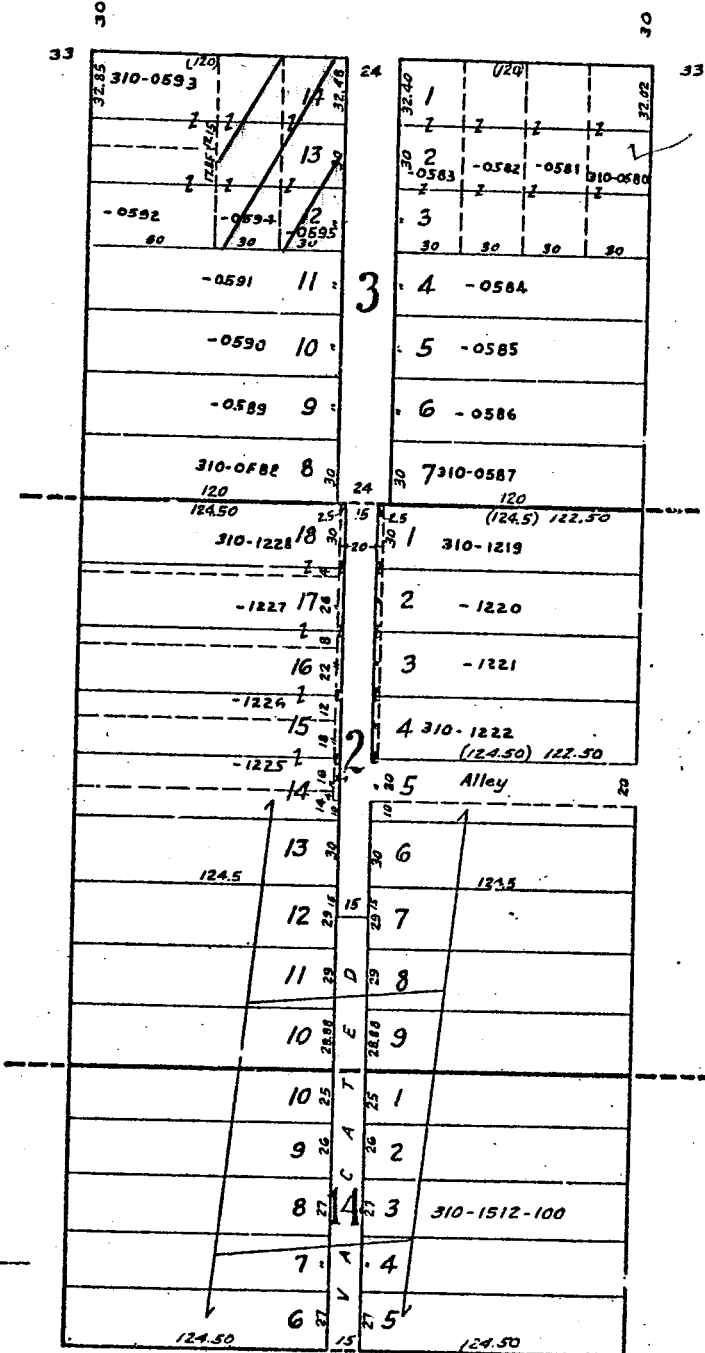
PL.

2978
2972
2968
2966
2964
2962
2960
2958
2954
2952
2950
2946
2942
2938
2932

2969
2963
2961
2959
2955
2953
2951
2947
2943
2939

N. 25TH

N. 24TH



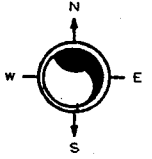
MICROFILMED 11-18-70

W. LOCUST ST.
A. K. MAYHEW'S SUBD. NO 2

NW 18-7-22
ATLAS P. 310

310

310-24
SCALE 1"=80'

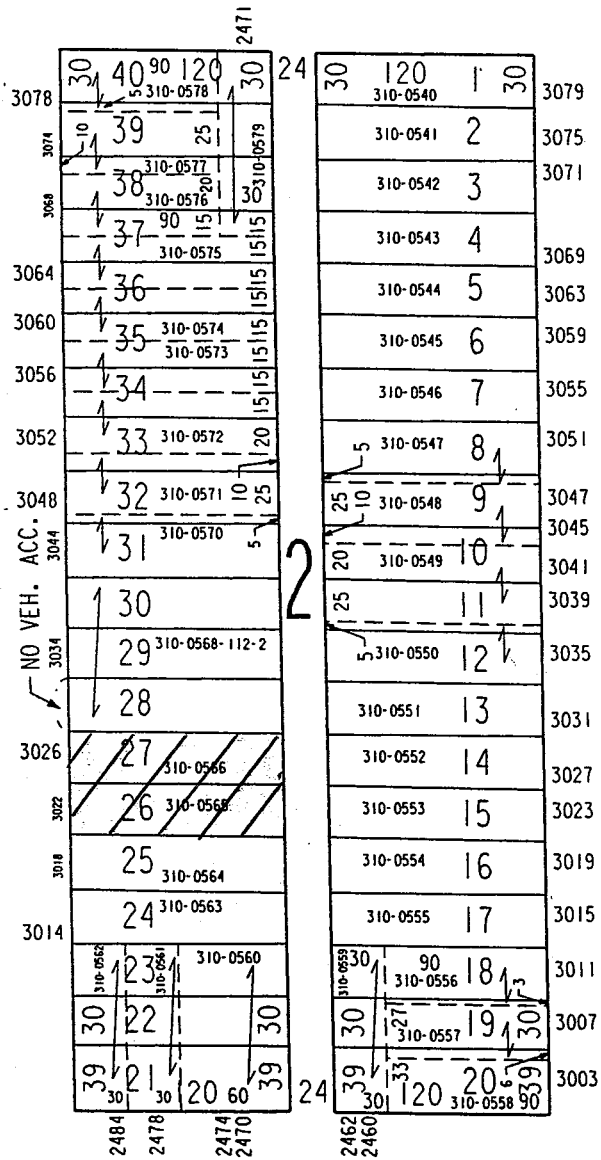


CAWKER'S SUBDIVISION "B"

W BURLEIGH ST

N 25TH ST

N 24TH PL



W CHAMBERS ST