



**PORT OF
MILWAUKEE**

2017 Capital Request
Capital Improvements Committee
April 18, 2016

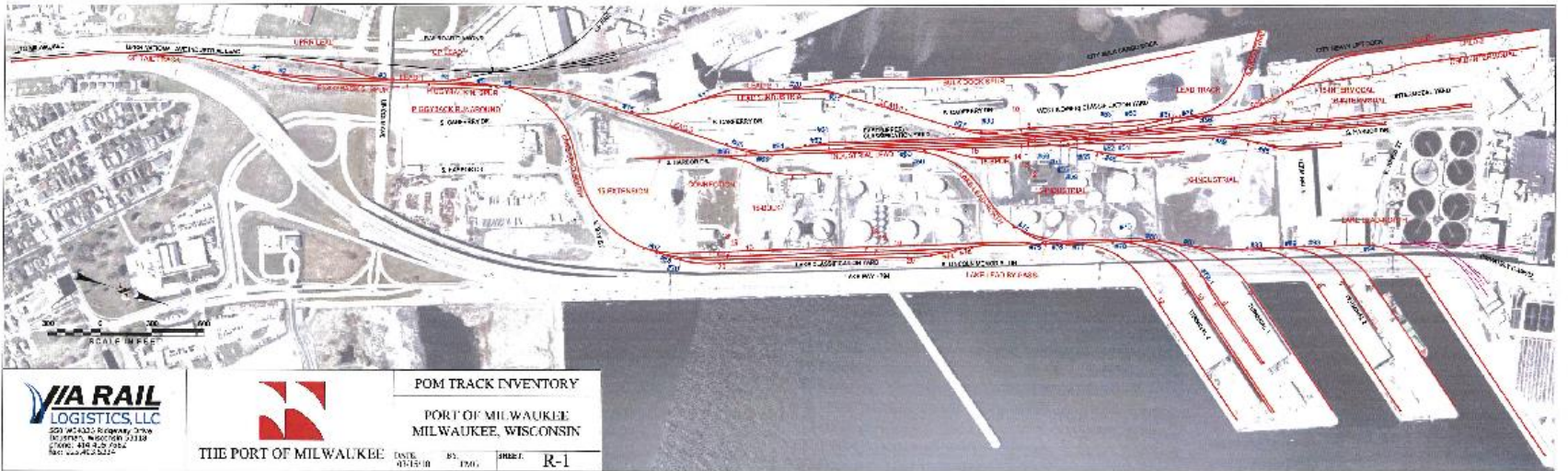
The Commercial Port's Mission

The Mission of the Port is to enhance the overall economic and social environment of our region by stimulating trade, business and employment.

Consistent with the Port's water-related location, the Port shall strive to be a premier provider of transportation and distribution services for its commercial customers and support public recreation, leisure and other uses the Port deems to be in the public interest.

Shipping through the Port of Milwaukee saves area consumers over \$60 million annually on transportation costs.





VIA RAIL
LOGISTICS, LLC
 201 W. LASSI, SECOND FLOOR
 100 WEST WASHINGTON STREET
 MILWAUKEE, WI 53201
 TEL: 414.224.2522



THE PORT OF MILWAUKEE

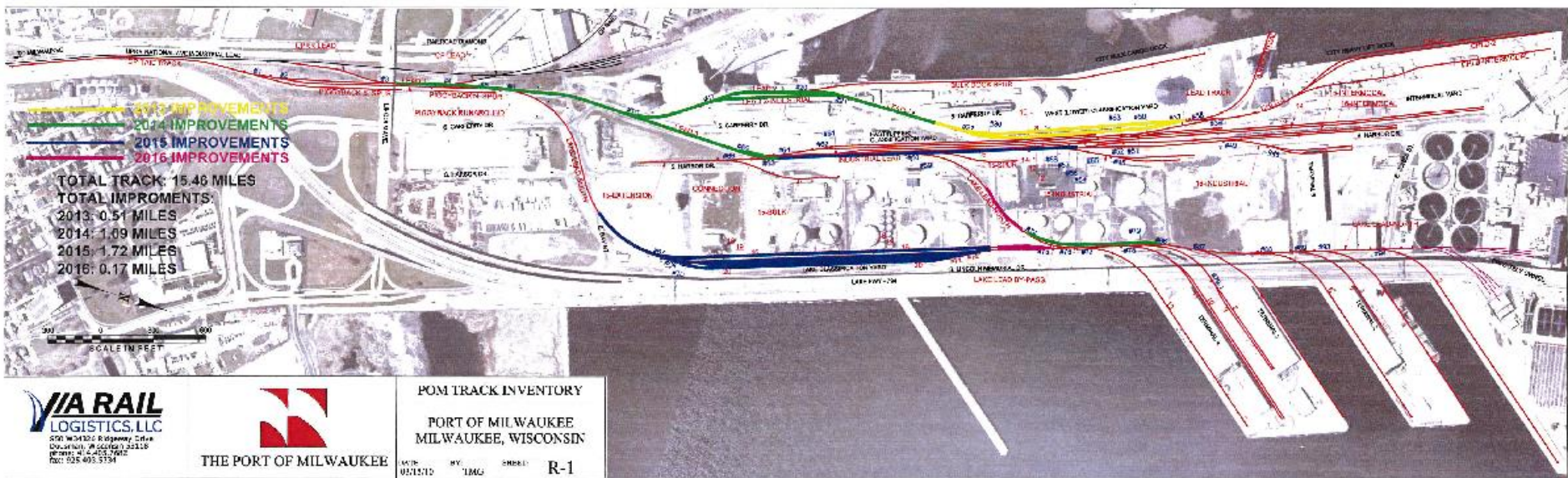
POM TRACK INVENTORY

PORT OF MILWAUKEE
 MILWAUKEE, WISCONSIN

| | | | |
|----------|------|----------|-----|
| DATE: | BY: | ISSUE #: | R-1 |
| 03-13-08 | 1700 | | |

Type of Dock Loading





The Port of Milwaukee owns and maintains over six miles (32,000 feet) of dockwall and breakwater structures.



Condition Summary



— Good

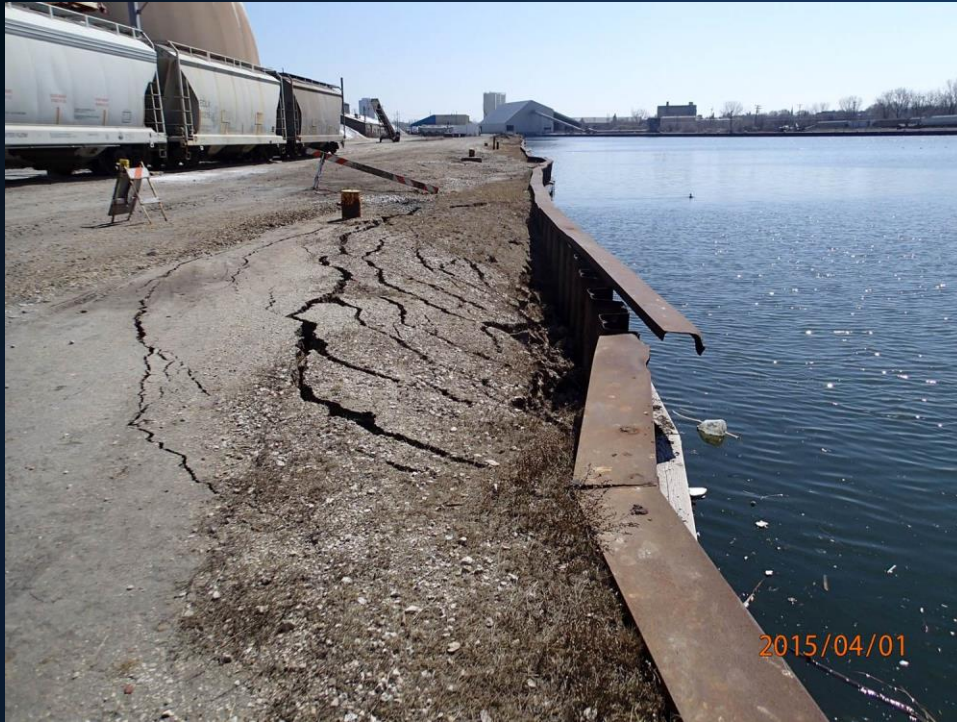
— Fair

— Poor

Loading on South Pier No. 1 – Type “B” & Type “D” Docks

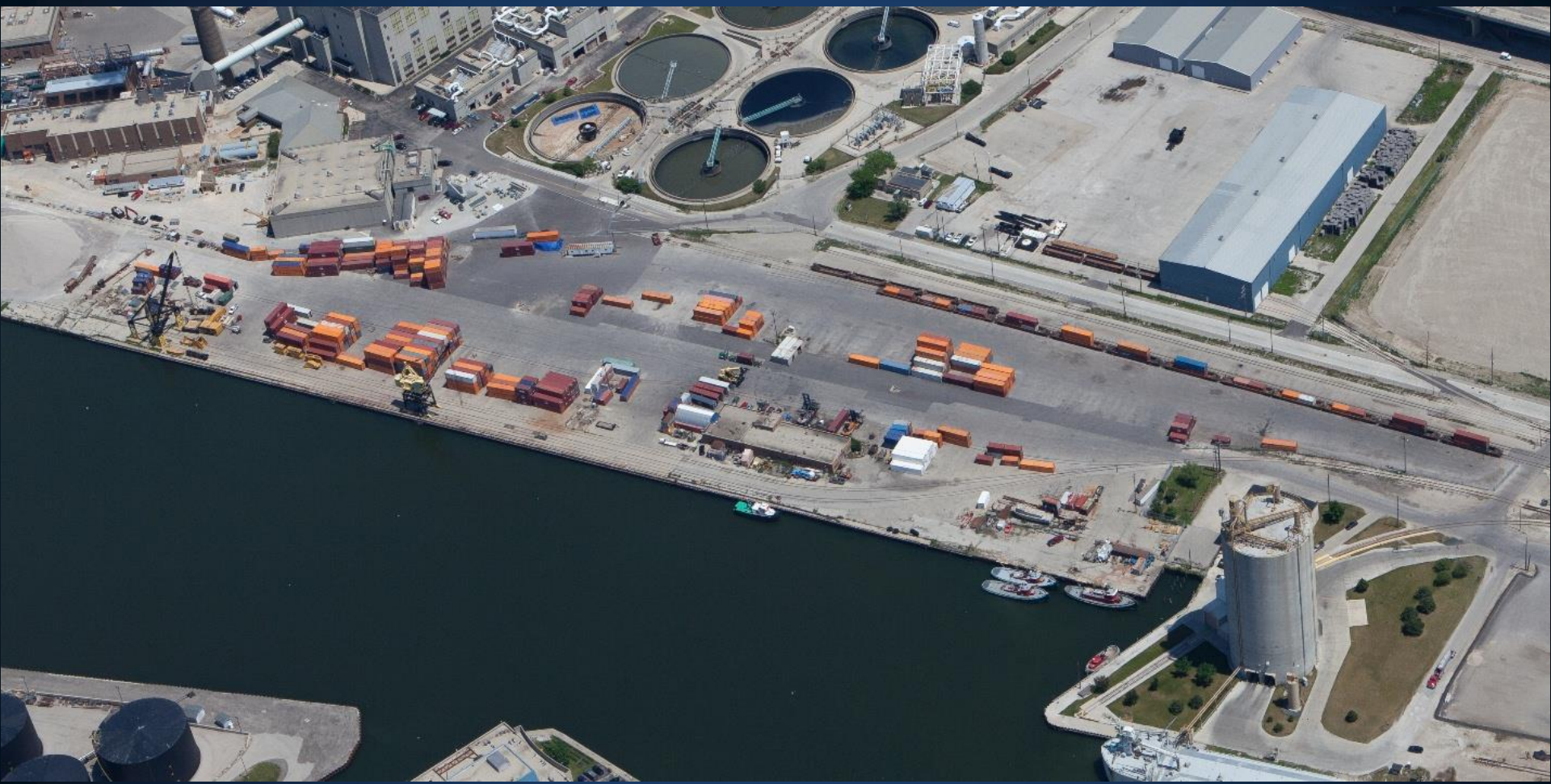


Failures & Spot Repairs











KAYE E. BARKER
LAKES SHIPPING
COMPANY



PORT OF MILWAUKEE



Questions?
Comments?

THANK YOU!