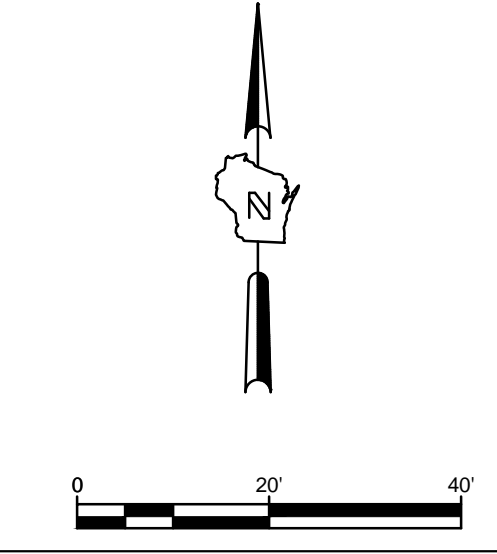


LEGEND

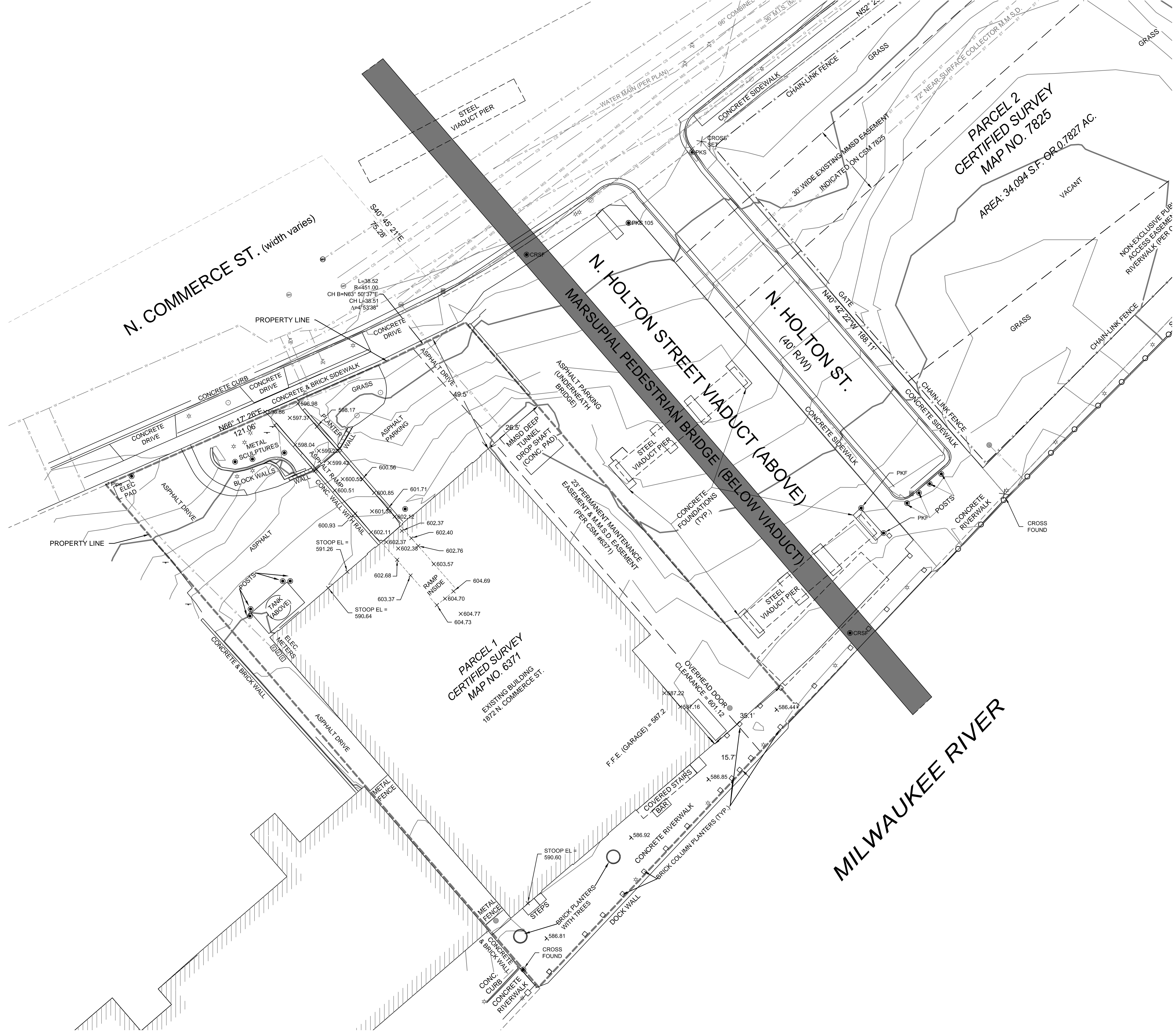
---	SECTION 14 SECTION LINE
---	PROPERTY LINE
---	EASEMENT
---	CHAIN LINK FENCE
---	GUARD RAIL
---	METAL FENCE
---	WOOD FENCE
---	TREE LINE
---	OVERHEAD UTILITY LINE
---	ELECTRIC
---	TELEPHONE
---	CABLE TV
---	FIBER OPTIC
---	FORSE MAIN
---	SANITARY SEWER
---	STORM SEWER
---	WATER MAIN
---	GAS
---	EXISTING MAJOR CONTOUR
---	EXISTING MINOR CONTOUR
○	MONUMENT FOUNDSET
○	REBAR FOUNDSET
○	CHEELED CROSS FOUNDSET
○	PK NAIL FOUNDSET
○	SPRING
○	MONUMENT
○	BENCHMARK
○	SONG
○	DECIDUOUS TREE (Diameter)
○	CONIFEROUS TREE (Diameter)
○	BUSH
○	POST
○	SOL BORING
○	ELECTRIC METER
○	MONITORING WELL
○	CUVVERT END
○	LIGHT POLE
○	MANHOLE
○	CATCH BASIN
○	CATCH BASIN (ROUND)
○	ROOF DRAIN
○	HYDRANT
○	WATER VALVE
○	GAS VALVE
○	UTILITY POLE
○	GUY WIRE
○	GAS METER
○	ELECTRIC METER
○	UTILITY PEDESTAL
○	HANDHOLE
○	TRAFFIC SIGNAL

LAKEFRONT BREWERY
 1872 E. COMMERCE STREET
 MILWAUKEE, WISCONSIN

TOPOGRAPHIC SURVEY



NO. REVISION	DATE	BY
DRWG NO.	15360-V-010.dwg	
DRAWN BY:	B.M.R.	
DATE:	3-23-2015	
PROJECT NO:	15360	
CHECKED BY:		
APPROVED BY:		
SHEET NO.:		



- GENERAL SURVEY NOTES:**
1. THE UNDERGROUND UTILITY INFORMATION SHOWN ON THIS DRAWING IS BASED ON FIELD LOCATIONS AND/OR RECORDS FURNISHED BY MUNICIPALITIES AND UTILITY COMPANIES. THE LOCATION AND ACCURACY OF WHICH CANNOT BE GUARANTEED. THERE MAY BE ADDITIONAL UNDERGROUND UTILITY INSTALLATIONS WITHIN THE PROJECT AREA THAT ARE NOT SHOWN.
 2. VERIFY ACTUAL LOCATIONS AND INVERTS IN THE FIELD. ANY POTENTIAL ERRORS, OMISSIONS, OR DISCREPANCIES SHALL BE BROUGHT TO THE ATTENTION OF THE ENGINEER PRIOR TO PROCEEDING WITH CONSTRUCTION.
 3. DRAWING IS BASED ON FIELD SURVEY COMPLETED BY B. ROZITE ON MARCH 17, 2015.
 4. VERTICAL DATUM FOR THE PROJECT SURVEY IS NGVD 1929. BENCHMARK FOR THE PROJECT SURVEY IS THE CONCRETE MONUMENT WITH BRASS CAP AT THE WEST QUARTER CORNER OF SECTION 21-7-22 WITH AN ELEVATION OF 595.77, AS PUBLISHED BY SEWRPC.

THE UNDERGROUND UTILITY INFORMATION SHOWN ON THIS MAP IS BASED ON FIELD MARKINGS AND INFORMATION FURNISHED BY UTILITY COMPANIES AND THE LOCAL MUNICIPALITY. WHILE THIS INFORMATION IS BELIEVED TO BE RELIABLE, ITS ACCURACY AND COMPLETENESS CANNOT BE GUARANTEED.





COLD BEER HERE

BEER. FOOD. BEER.

BEER HALL THIS WAY

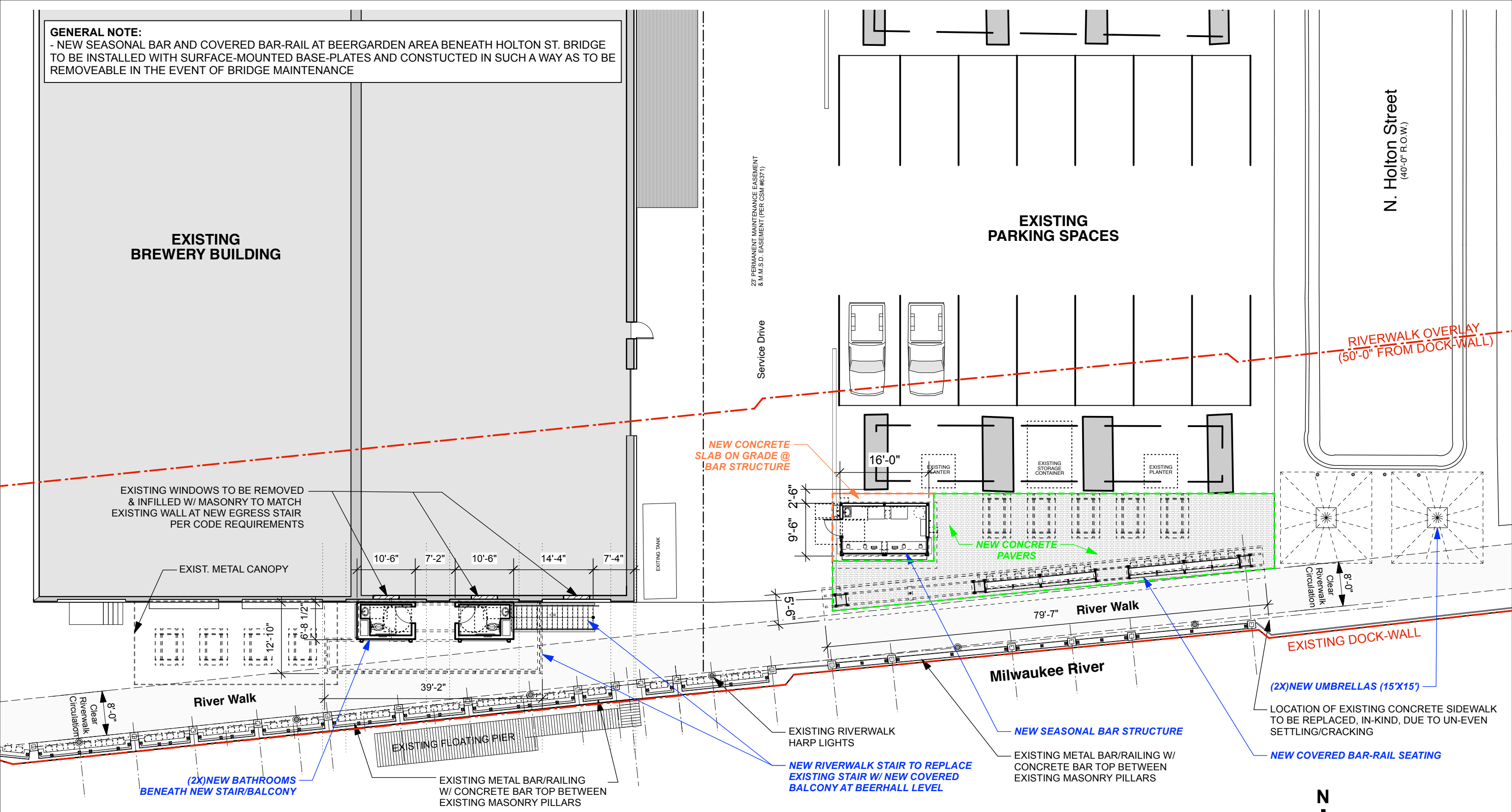




LAKEFRONT BEER HALL
BEER, FOOD, DRINK
HERE

mobile mail
1-800-80-MAIL
mail.com

GENERAL NOTE:
 - NEW SEASONAL BAR AND COVERED BAR-RAIL AT BEERGARDEN AREA BENEATH HOLTON ST. BRIDGE TO BE INSTALLED WITH SURFACE-MOUNTED BASE-PLATES AND CONSTRUCTED IN SUCH A WAY AS TO BE REMOVEABLE IN THE EVENT OF BRIDGE MAINTENANCE



1 Site Plan
A0.0 Scale 1/16"=1'-0"



THE KUBALA WASHATKO ARCHITECTS, INC.
 W61 N617 Mequon Avenue
 Cedarburg, WI 53012
 262-377-6039

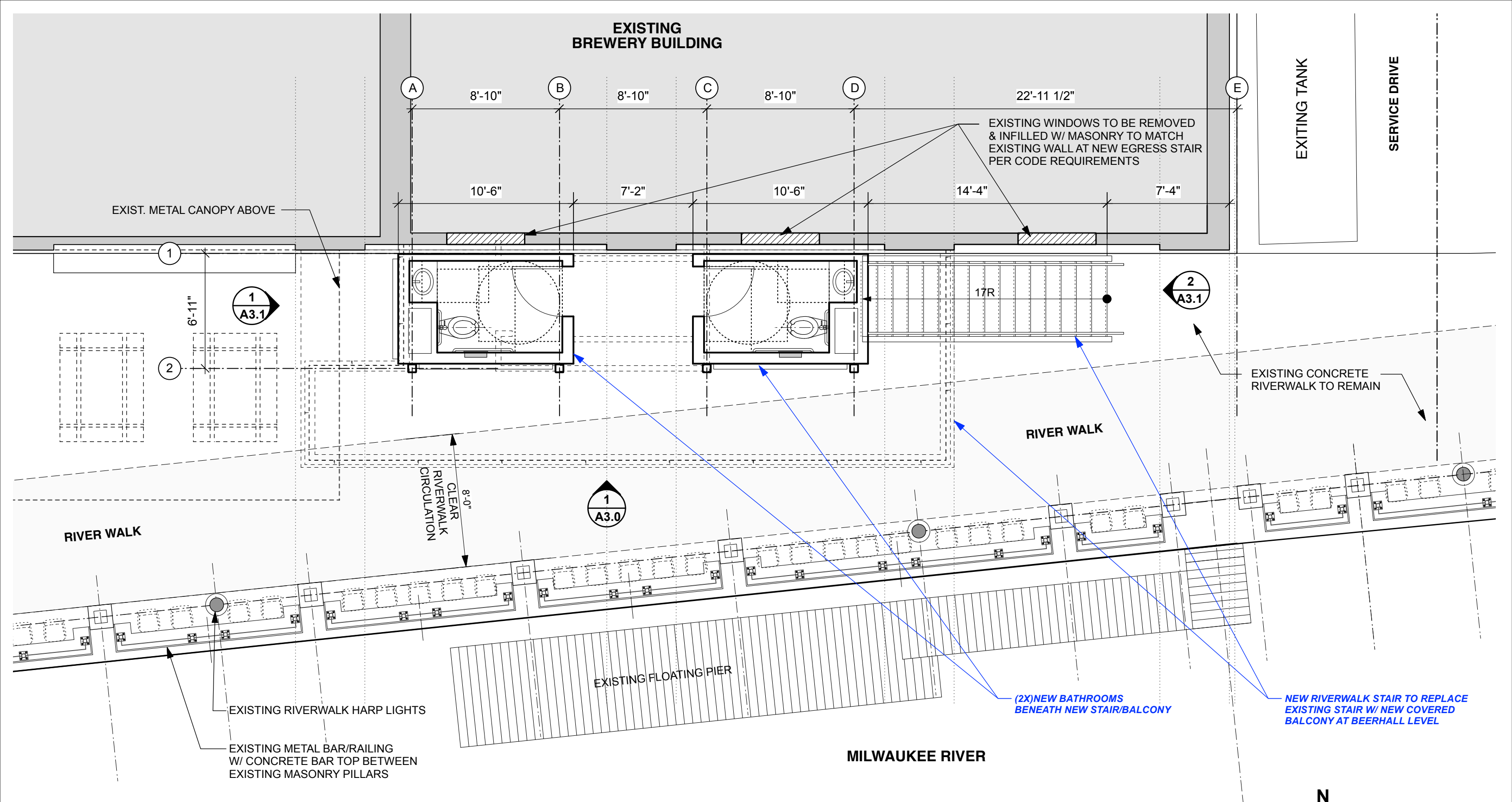
Lakefront Brewery - Riverwalk Stair & Beergarden

1872 N. Commerce St.
 Milwaukee, WI 53212

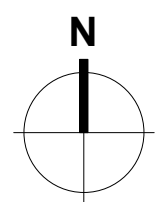
Plan Commission

DATE: 03.21.2022 REVISION
 PROJECT NO: 237821

A0.0



1 Riverwalk Plan - New Stair/Balcony
 A1.0 Scale 3/16"=1'-0"



THE KUBALA WASHATKO ARCHITECTS, INC.
 W61 N617 Mequon Avenue
 Cedarburg, WI 53012
 262-377-6039

Lakefront Brewery - Riverwalk Stair & Beergarden

1872 N. Commerce St.
 Milwaukee, WI 53212

Plan Commission

DATE: 03.21.2022 REVISION
 PROJECT NO: 237821

A1.0

NEW CONCRETE SLAB @ BAR STRUCTURE

EXISTING PLANTER

EXISTING STORAGE CONTAINER

EXISTING PLANTER

SERVICE DRIVE/EASEMENT

16'-0"

2'-6"

9'-6"

PICKNIC TABLE (ADA)

PICKNIC TABLE

PICKNIC TABLE

PICKNIC TABLE

PICKNIC TABLE

NEW CONCRETE PAVERS

PAVER INSTALLATION TO HAVE NOT MORE THAN 1/4" HEIGHT VARIANCE

1 A3.3

3 A3.3

3 A3.2

ADA (34")

CLEAR RIVERWALK CIRCULATION 8'-0"

EXISTING CONCRETE RIVERWALK TO REMAIN

RIVER WALK

EXISTING CONCRETE RIVERWALK TO REMAIN

1 A3.2

2 A3.2

LOCATION OF EXISTING CONCRETE RIVERWALK TO BE REPLACED, IN-KIND, DUE TO UN-EVEN SETTLING/CRACKING

EXISTING RIVERWALK HARP LIGHTS

EXISTING METAL BAR/RAILING W/ CONCRETE BAR TOP BETWEEN EXISTING MASONRY PILLARS

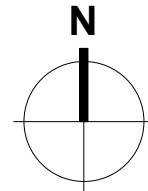
NEW SEASONAL BAR STRUCTURE

NEW COVERED BAR-RAIL SEATING *NO SEATING ON RIVERWALK SIDE OF BAR-RAIL, TO MAINTAIN 8'-0" CLEAR PATH

MILWAUKEE RIVER

GENERAL NOTE:
- NEW SEASONAL BAR AND COVERED BAR-RAIL AT BEERGARDEN AREA BENEATH HOLTON ST. BRIDGE TO BE INSTALLED WITH SURFACE-MOUNTED BASE-PLATES AND CONSTRUCTED IN SUCH A WAY AS TO BE REMOVEABLE IN THE EVENT OF BRIDGE MAINTENANCE

1 Riverwalk Plan - New Beergarden
A1.1 Scale 3/16"=1'-0"



THE KUBALA WASHATKO ARCHITECTS, INC.
W61 N617 Mequon Avenue
Cedarburg, WI 53012
262-377-6039

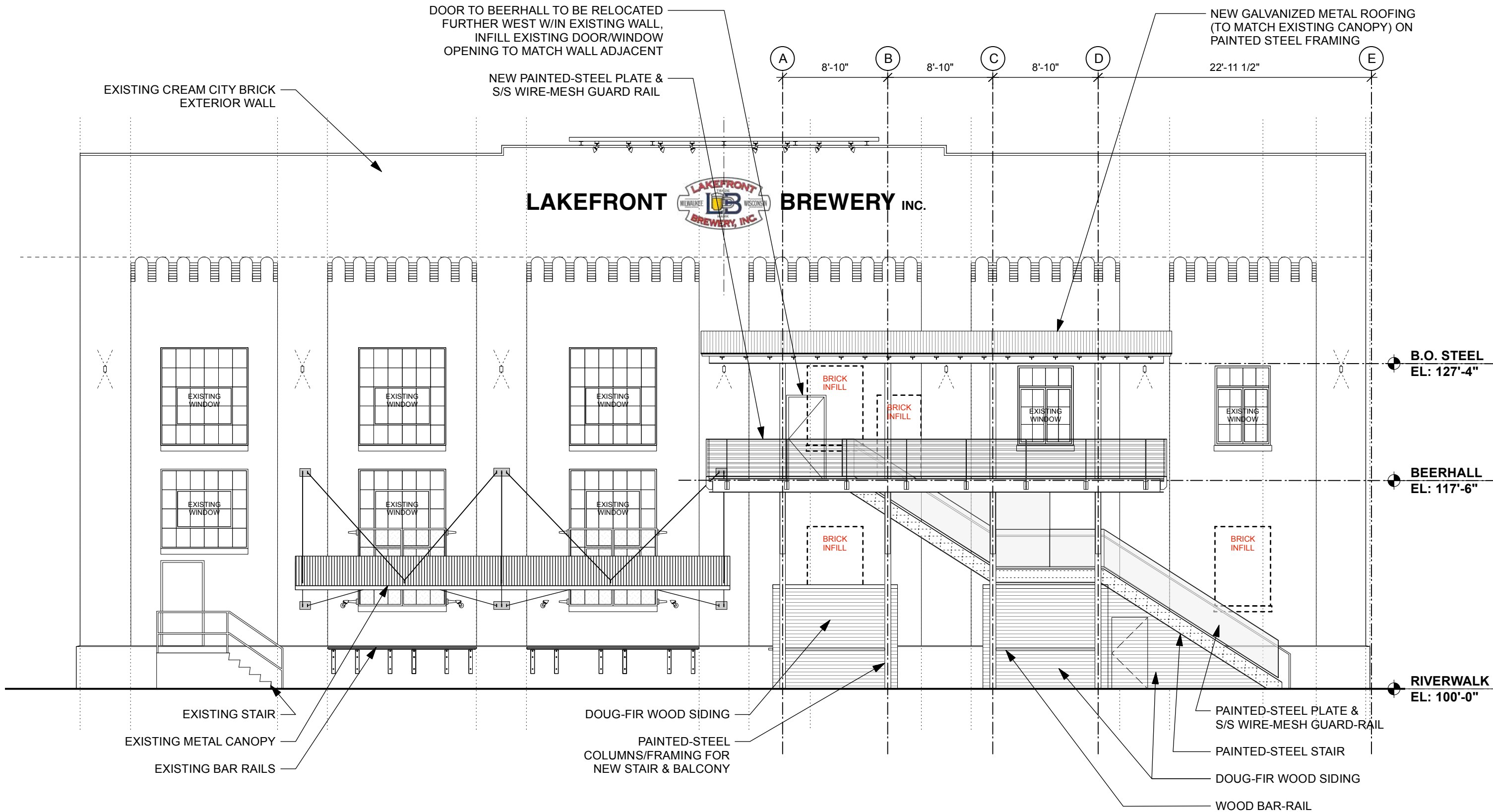
Lakefront Brewery - Riverwalk Stair & Beergarden

1872 N. Commerce St.
Milwaukee, WI 53212

Plan Commission

DATE: 03.21.2022 REVISION
PROJECT NO: 237821

A1.1



1 Riverwalk Elevation - New Stair/Balcony: South Elevation
A3.0 Scale 1/8"=1'-0"



THE KUBALA WASHATKO
 ARCHITECTS, INC.
 W61 N617 Mequon Avenue
 Cedarburg, WI 53012
 262-377-6039

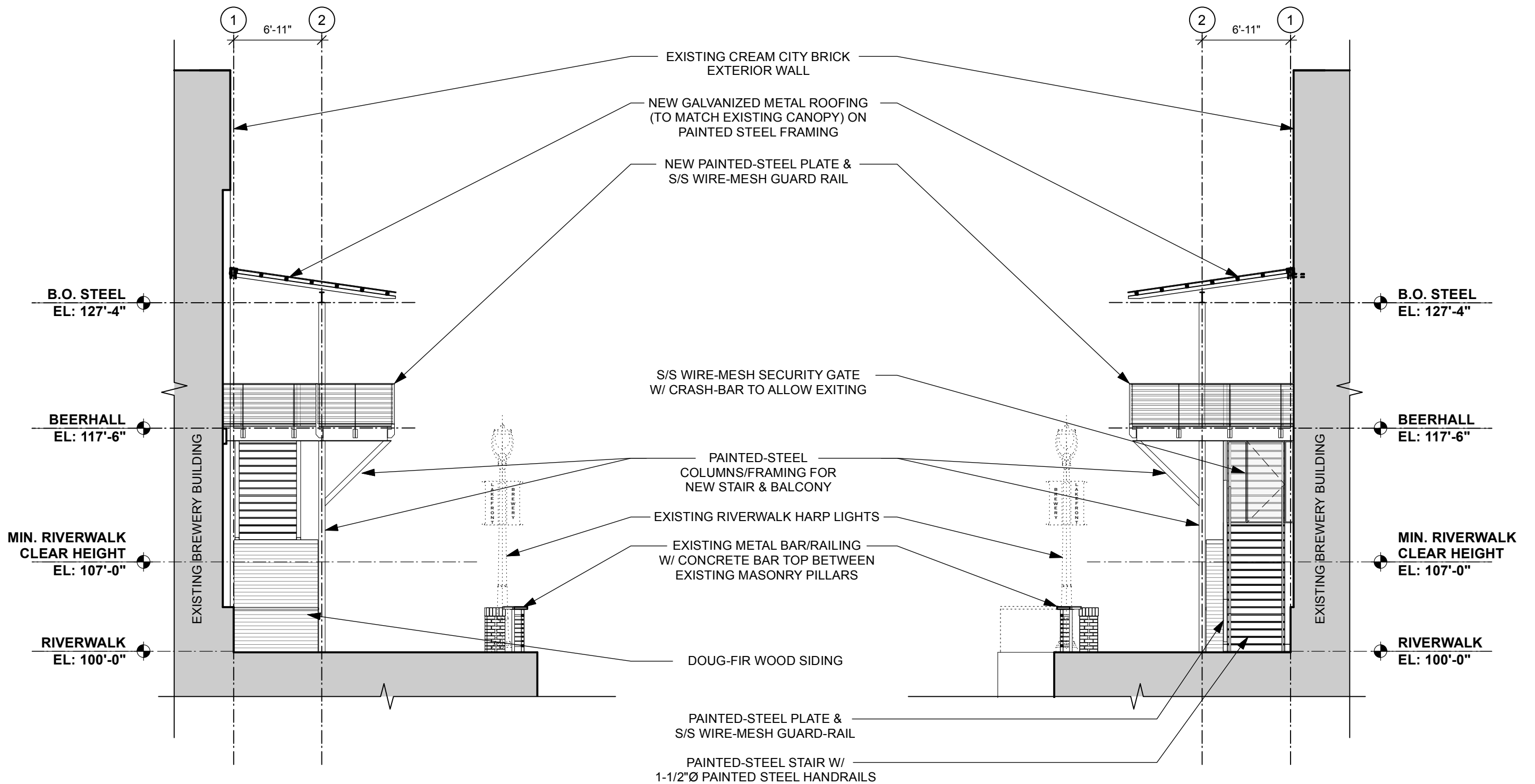
Lakefront Brewery - Riverwalk Stair & Beergarden

1872 N. Commerce St.
 Milwaukee, WI 53212

Plan
 Commission

DATE:
 03.21.2022 REVISION
 PROJECT NO:
 237821

A3.0



1 Riverwalk Elevation - New Stair/Balcony: West Elevation
A3.1 Scale 1/8"=1'-0"

2 Riverwalk Elevation - New Stair/Balcony: East Elevation
A3.1 Scale 1/8"=1'-0"



THE KUBALA WASHATKO
 ARCHITECTS, INC.
 W61 N617 Mequon Avenue
 Cedarburg, WI 53012
 262-377-6039

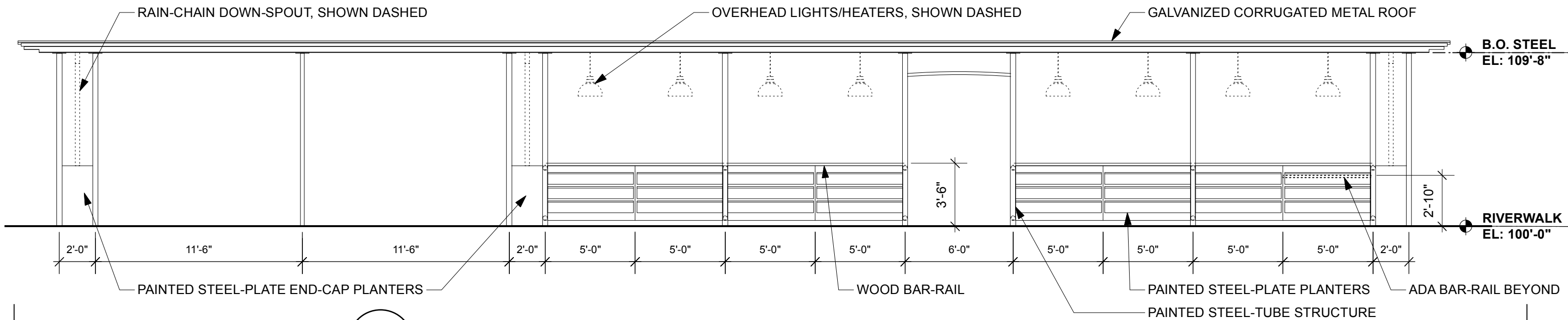
Lakefront Brewery - Riverwalk Stair & Beergarden

1872 N. Commerce St.
 Milwaukee, WI 53212

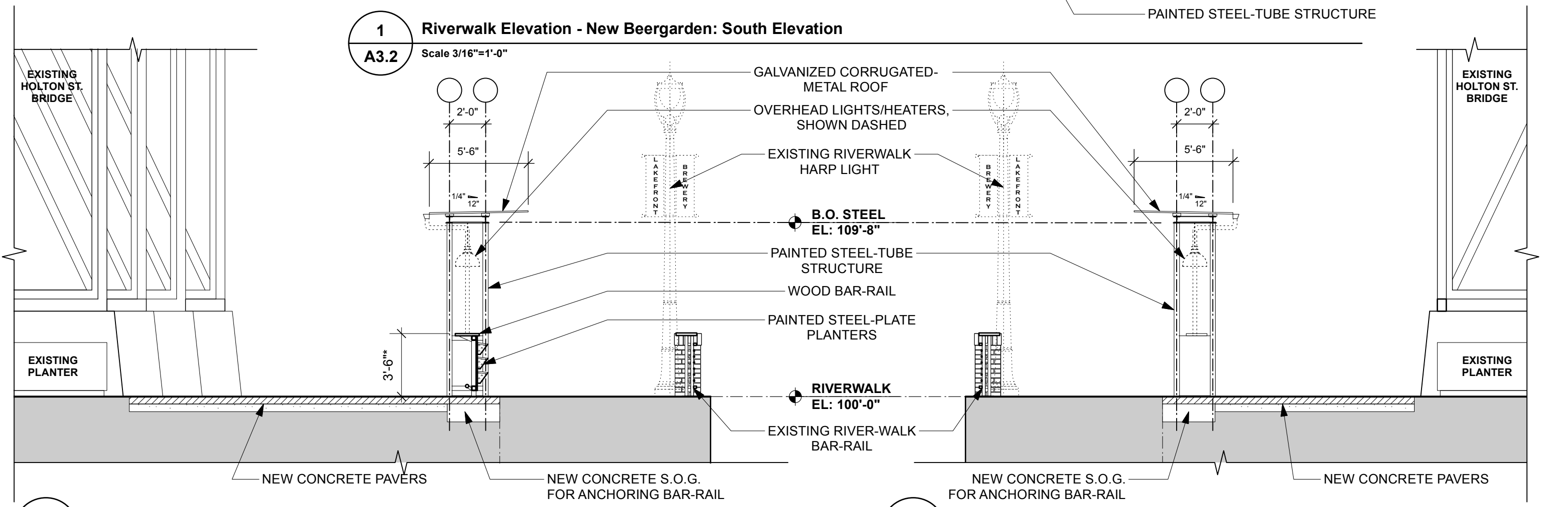
Plan
 Commission

DATE:
 03.21.2022 REVISION
 PROJECT NO:
 237821

A3.1



1 Riverwalk Elevation - New Beergarden: South Elevation
A3.2 Scale 3/16"=1'-0"

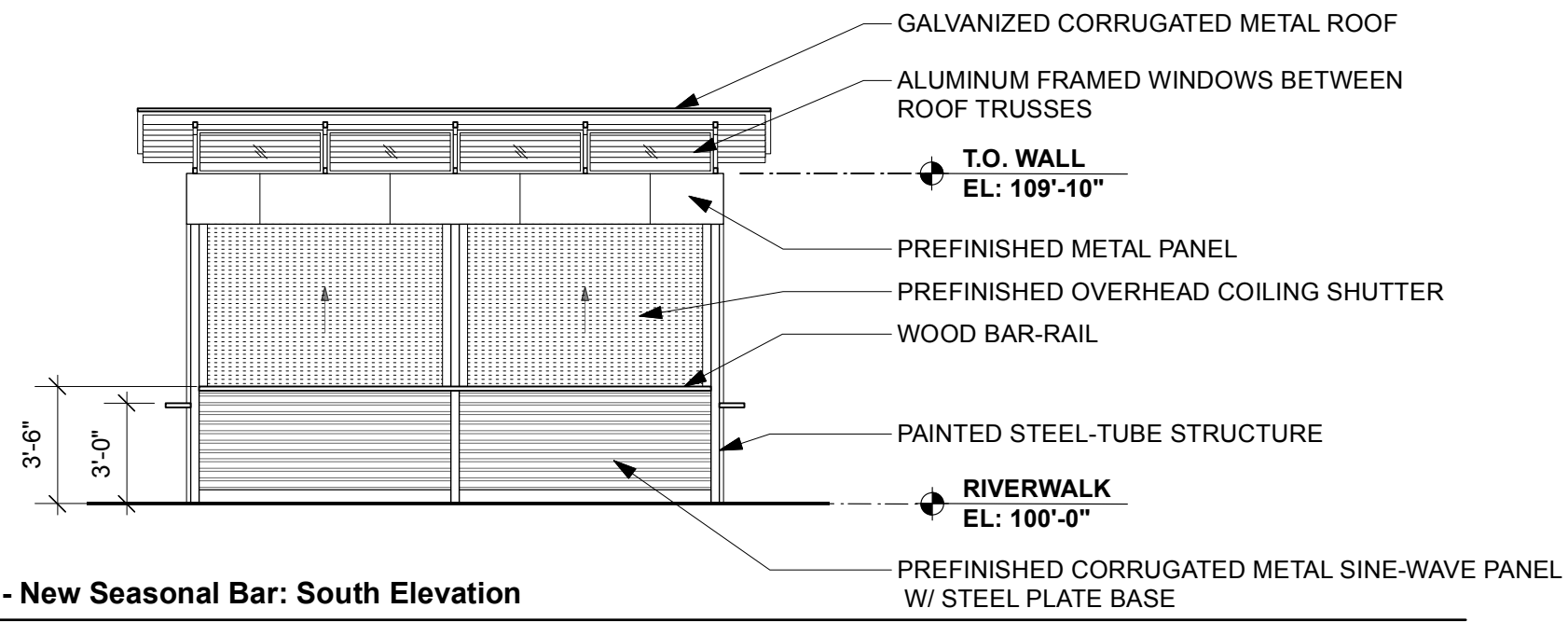


2 Riverwalk Elevation - New Beergarden: West Elevation
A3.2 Scale 3/16"=1'-0"

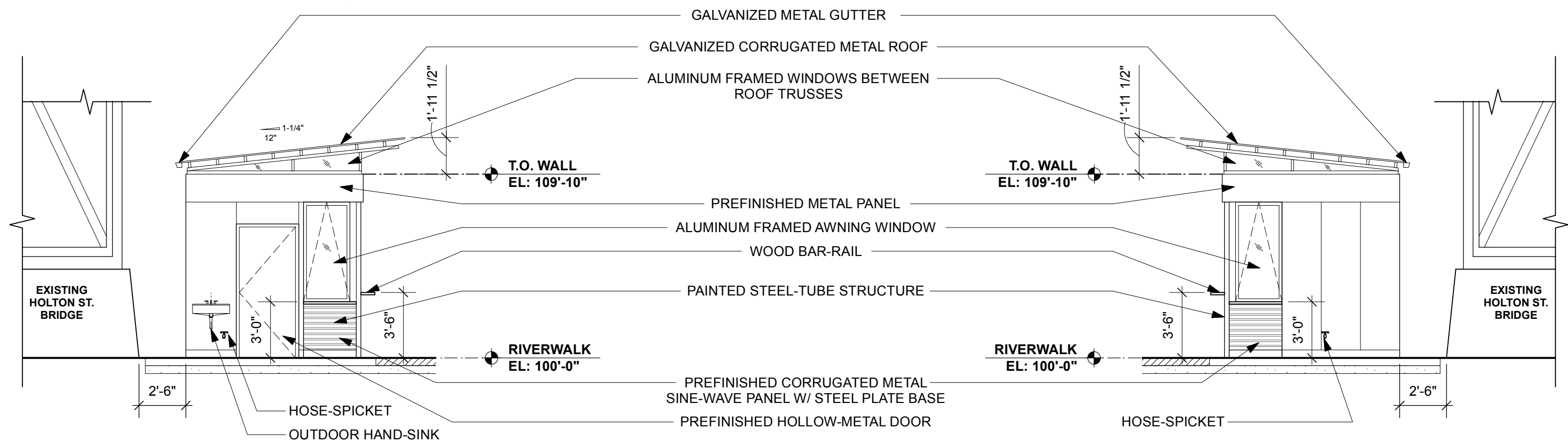
3 Riverwalk Elevation - New Beergarden: East Elevation
A3.2 Scale 3/16"=1'-0"

*MIN. 5% (2'-0") OF BAR-RAIL TO BE ADA COMPLIANT (+32")

GENERAL NOTE:
 - NEW SEASONAL BAR AND COVERED BAR-RAIL AT BEERGARDEN AREA BENEATH HOLTON ST. BRIDGE TO BE INSTALLED WITH SURFACE-MOUNTED BASE-PLATES AND CONSTRUCTED IN SUCH A WAY AS TO BE REMOVEABLE IN THE EVENT OF BRIDGE MAINTENANCE



1 Riverwalk Elevation - New Seasonal Bar: South Elevation
A3.3 Scale 3/16"=1'-0"



2 Riverwalk Elevation - New Seasonal Bar: West Elevation
A3.3 Scale 3/16"=1'-0"

3 Riverwalk Elevation - New Seasonal Bar: East Elevation
A3.3 Scale 3/16"=1'-0"

GENERAL NOTE:
 - NEW SEASONAL BAR AND COVERED BAR-RAIL AT BEERGARDEN AREA BENEATH HOLTON ST. BRIDGE TO BE INSTALLED WITH SURFACE-MOUNTED BASE-PLATES AND CONSTRUCTED IN SUCH A WAY AS TO BE REMOVEABLE IN THE EVENT OF BRIDGE MAINTENANCE



THE KUBALA WASHATKO ARCHITECTS, INC.
 W61 N617 Mequon Avenue
 Cedarburg, WI 53012
 262-377-6039

Lakefront Brewery - Riverwalk Stair & Beergarden

1872 N. Commerce St.
 Milwaukee, WI 53212

Plan
 Commission

DATE:
 03.21.2022 REVISION
 PROJECT NO:
 237821

A3.3



1 3D Model View - New Stair/Balcony
 A4.0 Not to Scale



THE KUBALA WASHATKO
 ARCHITECTS, INC.
 W61 N617 Mequon Avenue
 Cedarburg, WI 53012
 262-377-6039

Lakefront Brewery - Riverwalk Stair & Beergarden

1872 N. Commerce St.
 Milwaukee, WI 53212

Plan
 Commission

DATE:
 03.21.2022 REVISION
 PROJECT NO:
 237821

A4.0



1 3D Model View - New Stair/Balcony
A4.1 Not to Scale



THE KUBALA WASHATKO
ARCHITECTS, INC.
W61 N617 Mequon Avenue
Cedarburg, WI 53012
262-377-6039

Lakefront Brewery - Riverwalk Stair & Beergarden

1872 N. Commerce St.
Milwaukee, WI 53212

Plan
Commission

DATE:
03.21.2022 REVISION
PROJECT NO:
237821

A4.1



1 3D Model View - New Stair/Balcony
A4.2 Not to Scale



THE KUBALA WASHATKO
ARCHITECTS, INC.
W61 N617 Mequon Avenue
Cedarburg, WI 53012
262-377-6039

Lakefront Brewery - Riverwalk Stair & Beergarden

1872 N. Commerce St.
Milwaukee, WI 53212

Plan
Commission

DATE:
03.21.2022 REVISION
PROJECT NO:
237821

A4.2



1 3D Model View - New Stair/Balcony
A4.3 Not to Scale



THE KUBALA WASHATKO
ARCHITECTS, INC.
W61 N617 Mequon Avenue
Cedarburg, WI 53012
262-377-6039

Lakefront Brewery - Riverwalk Stair & Beergarden

1872 N. Commerce St.
Milwaukee, WI 53212

Plan
Commission

DATE:
03.21.2022 REVISION
PROJECT NO:
237821

A4.3



1 3D Model View - New Stair/Balcony
 A4.4 Not to Scale



THE KUBALA WASHATKO
 ARCHITECTS, INC.
 W61 N617 Mequon Avenue
 Cedarburg, WI 53012
 262-377-6039

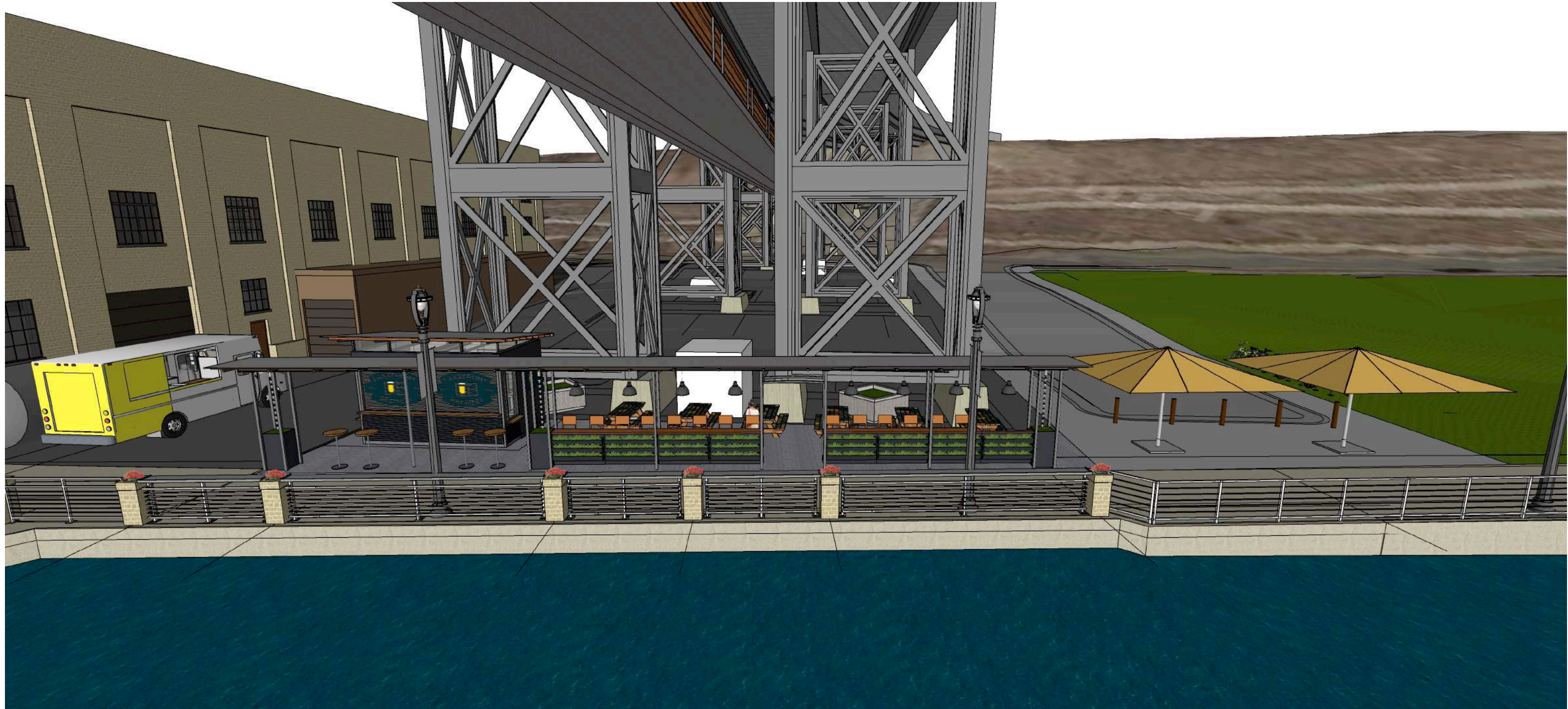
Lakefront Brewery - Riverwalk Stair & Beergarden

1872 N. Commerce St.
 Milwaukee, WI 53212

Plan
 Commission

DATE:
 03.21.2022 REVISION
 PROJECT NO:
 237821

A4.4



1 3D Model View - New Beergarden (Closed Bar Structure)
A5.0 Not to Scale



THE KUBALA WASHATKO
ARCHITECTS, INC.
W61 N617 Mequon Avenue
Cedarburg, WI 53012
262-377-6039

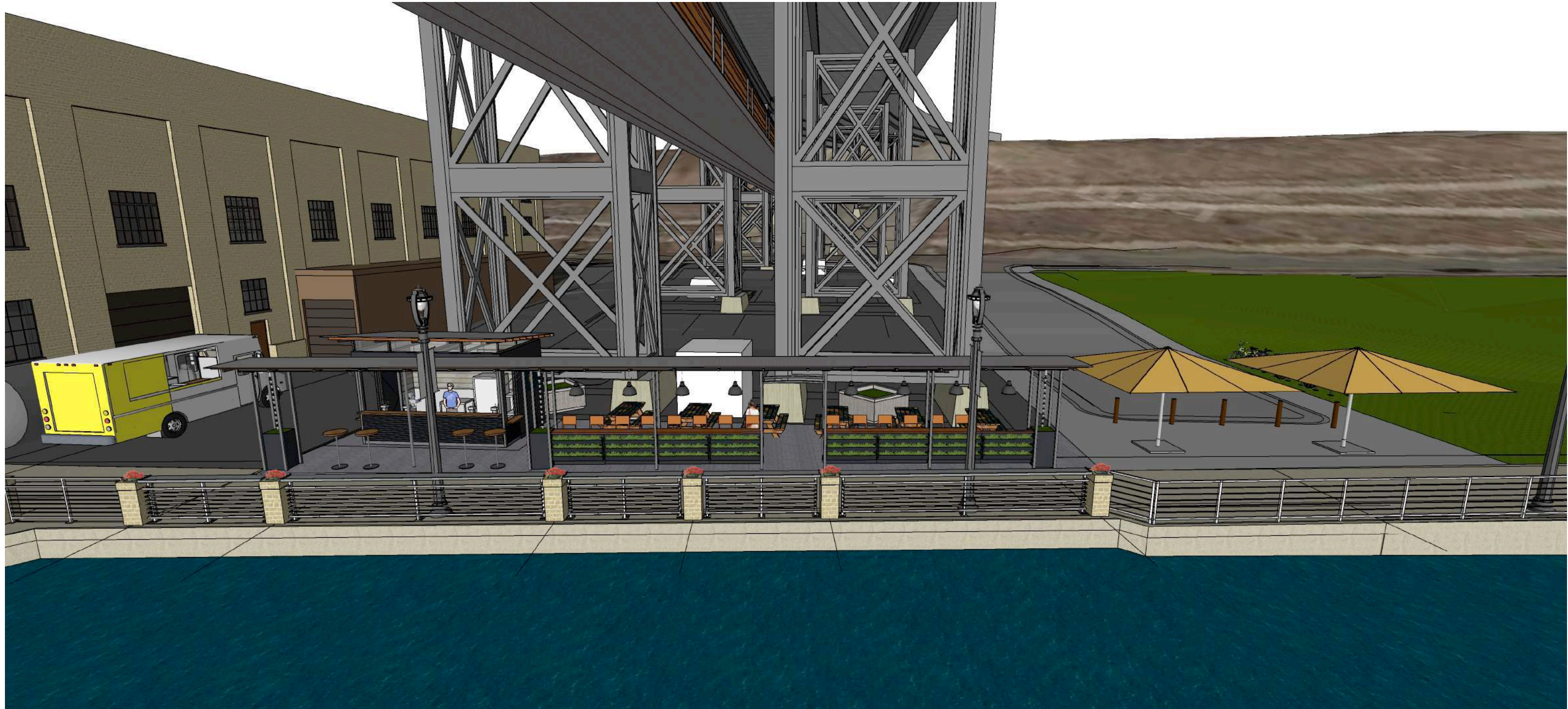
Lakefront Brewery - Riverwalk Stair & Beergarden

1872 N. Commerce St.
Milwaukee, WI 53212

Plan
Commission

DATE:
03.21.2022 REVISION
PROJECT NO:
237821

A5.0



1 3D Model View - New Beer Garden (Open Bar Structure)
A5.1 Not to Scale



THE KUBALA WASHATKO
ARCHITECTS, INC.
W61 N617 Mequon Avenue
Cedarburg, WI 53012
262-377-6039

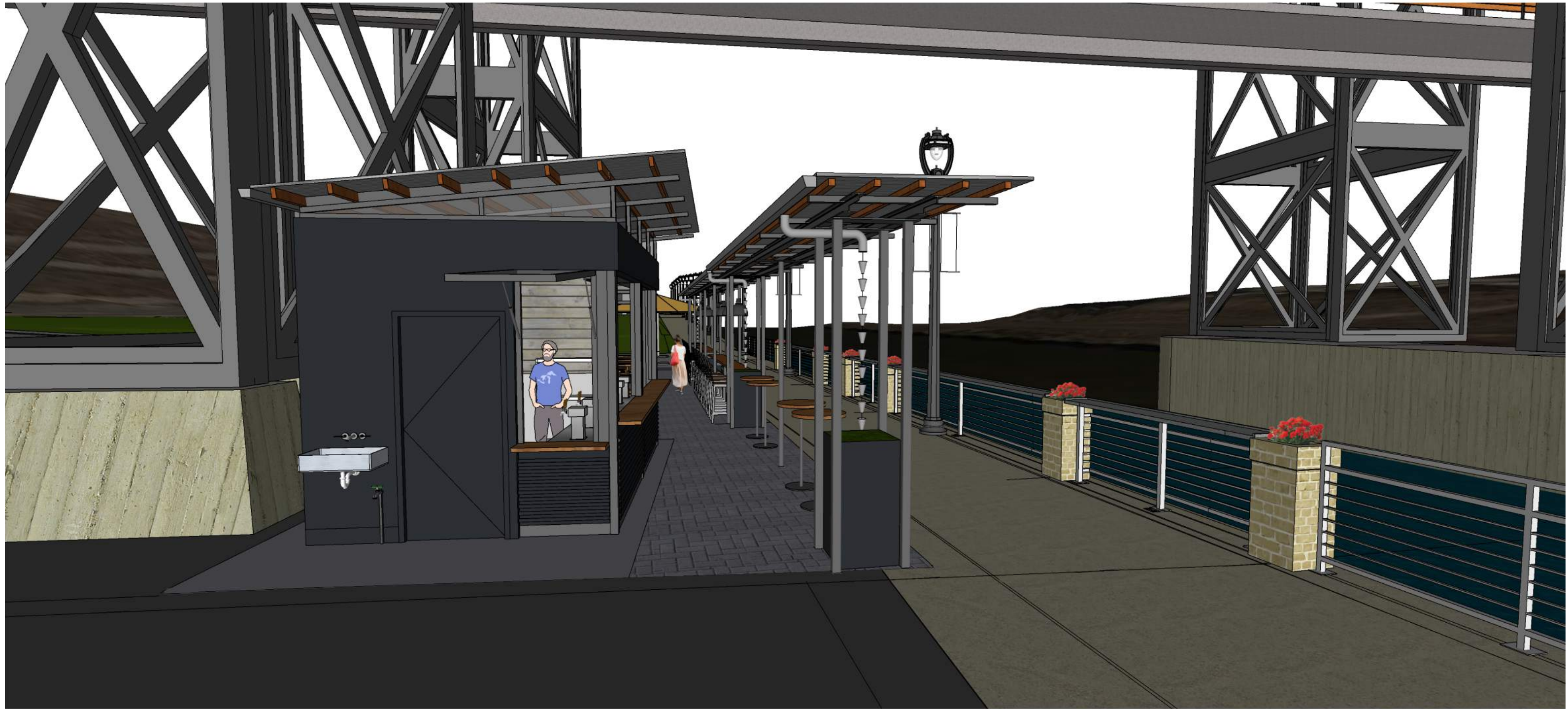
Lakefront Brewery - Riverwalk Stair & Beergarden

1872 N. Commerce St.
Milwaukee, WI 53212

Plan
Commission

DATE:
03.21.2022 REVISION
PROJECT NO:
237821

A5.1



1 3D Model View - New Beer Garden
 A5.2 Not to Scale

NOTE: CONCRETE PAVERS @ BEERGARDEN TO BE FLUSH WITH ADJACENT CONCRETE RIVERWALK



THE KUBALA WASHATKO
 ARCHITECTS, INC.
 W61 N617 Mequon Avenue
 Cedarburg, WI 53012
 262-377-6039

Lakefront Brewery - Riverwalk Stair & Beergarden

1872 N. Commerce St.
 Milwaukee, WI 53212

Plan
 Commission

DATE:
 03.21.2022 REVISION
 PROJECT NO:
 237821

A5.2



1 3D Model View - New Beer Garden
 A5.3 Not to Scale

NOTE: CONCRETE PAVERS @ BEERGARDEN TO BE FLUSH WITH ADJACENT CONCRETE RIVERWALK



THE KUBALA WASHATKO
 ARCHITECTS, INC.
 W61 N617 Mequon Avenue
 Cedarburg, WI 53012
 262-377-6039

Lakefront Brewery - Riverwalk Stair & Beergarden

1872 N. Commerce St.
 Milwaukee, WI 53212

Plan
 Commission

DATE:
 03.21.2022 REVISION
 PROJECT NO:
 237821

A5.3



1 3D Model View - New Beer Garden
A5.4 Not to Scale



THE KUBALA WASHATKO
ARCHITECTS, INC.
W61 N617 Mequon Avenue
Cedarburg, WI 53012
262-377-6039

Lakefront Brewery - Riverwalk Stair & Beergarden

1872 N. Commerce St.
Milwaukee, WI 53212

Plan
Commission

DATE:
03.21.2022 REVISION
PROJECT NO:
237821

A5.4