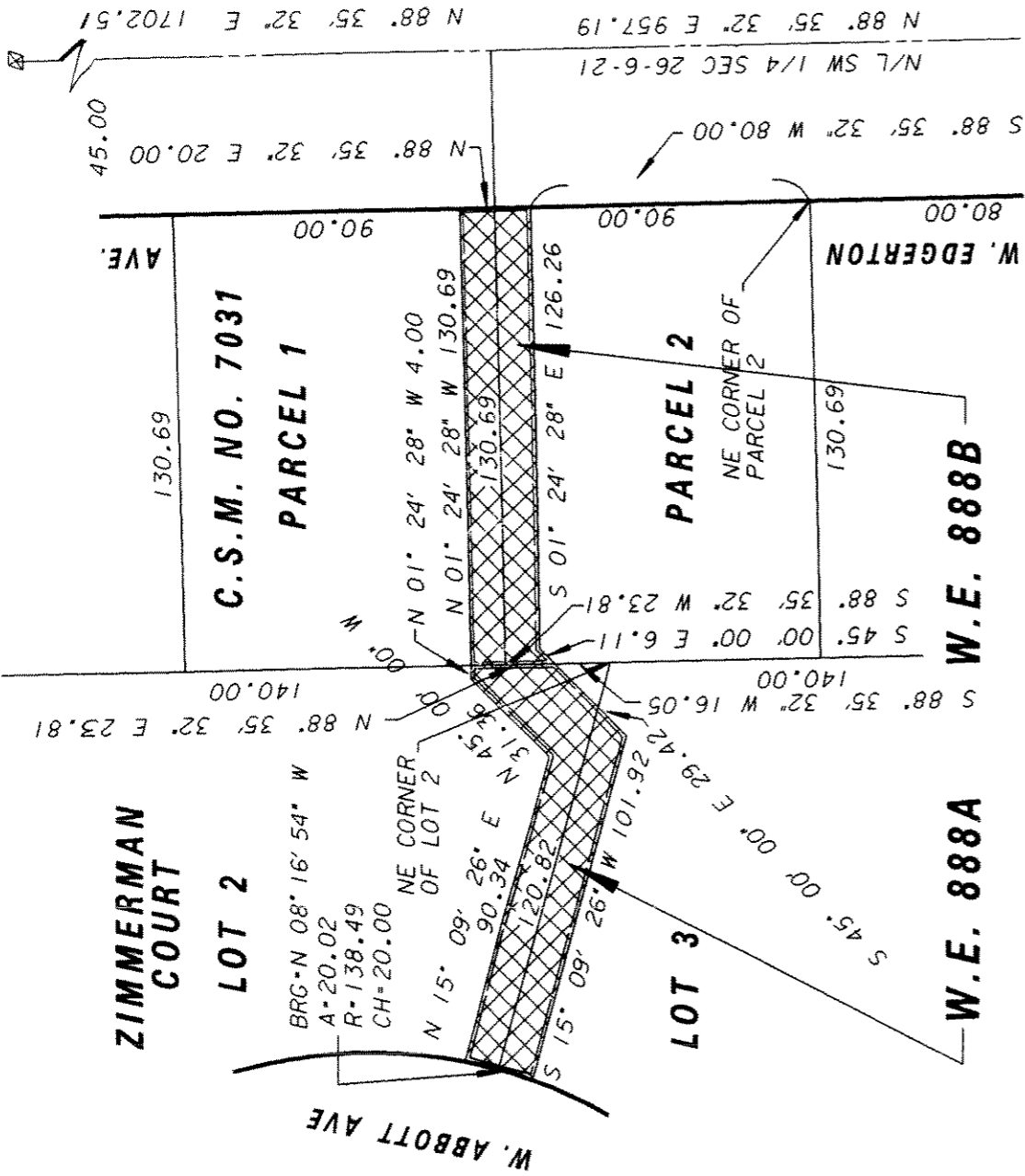


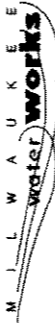
S.W. 1/4 OF SEC. 26, T.6N., R.21E.

NW CORNER SW
1/4 SEC 26-6-21



WATER EASEMENTS

W.E. 888A AND W.E. 888B



Water Engineering
Department of Public Works
Milwaukee, Wisconsin

WATER EASEMENT

IN **C.S.M. NO. 7031, PARCELS 1 AND 2**
AND **ZIMMERMAN COURT, LOTS 2 AND 3**
FROM **W. EDGERTON AVE.**
TO **W. ABBOTT AVE.**



SCALE	1" = 50'
IN SEC. NO.	648
PLAN DATE	2-14-02
DRAWN BY	MET. ENG.
CHECKED BY	PWP
REVIEWED BY	
WORK ORDER	WT410016405

APPROVED	DATE
<i>M.J. Hall</i>	4-3-02
<i>Amelia J. Ford</i>	4-8-02
<i>Jim Lewis</i>	4-8-02
MAINS DESIGN ENGINEER	CHIEF DESIGN ENGINEER
SPECIAL DEPUTY COMMISSIONER OF PUBLIC WORKS	

SHEET NO. 1 OF 1 PLAN FILE NO. **WE888**

MICROFILMED