

1 BASEMENT
 Scale: 3/32" = 1'-0"

- BATHROOM & UTILITY
- CONFERENCE/TRAINING/BREAKRM
- OPEN OFFICE
- PRIVATE OFFICE
- RECEPTION & DESK
- STORAGE & GARAGE

DATE: 09/20/2018

CITY OF MILWAUKEE - OFFICE OF AFRICAN AMERICAN AFFAIRS

4830 W. FOND DU LAC AVE
MILWAUKEE, WI 53216

DAN BEYER ARCHITECTS

Copyright 2018, Dan Beyer Architects



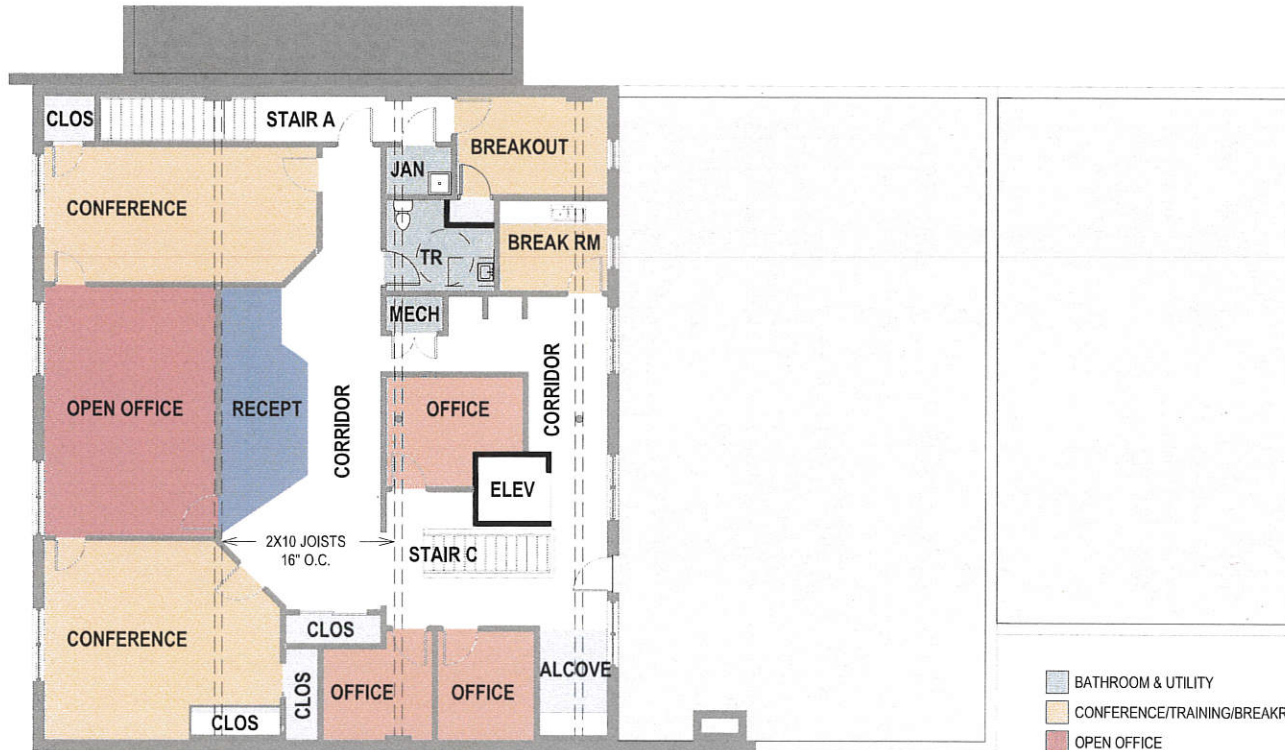
DATE: 09/20/2018

CITY OF MILWAUKEE - OFFICE OF AFRICAN AMERICAN AFFAIRS

4830 W. FOND DU LAC AVE
MILWAUKEE, WI 53216

DAN BEYER ARCHITECTS

Copyright 2018, Dan Beyer Architects



1 LEVEL 02
Scale: 3/32" = 1'-0"



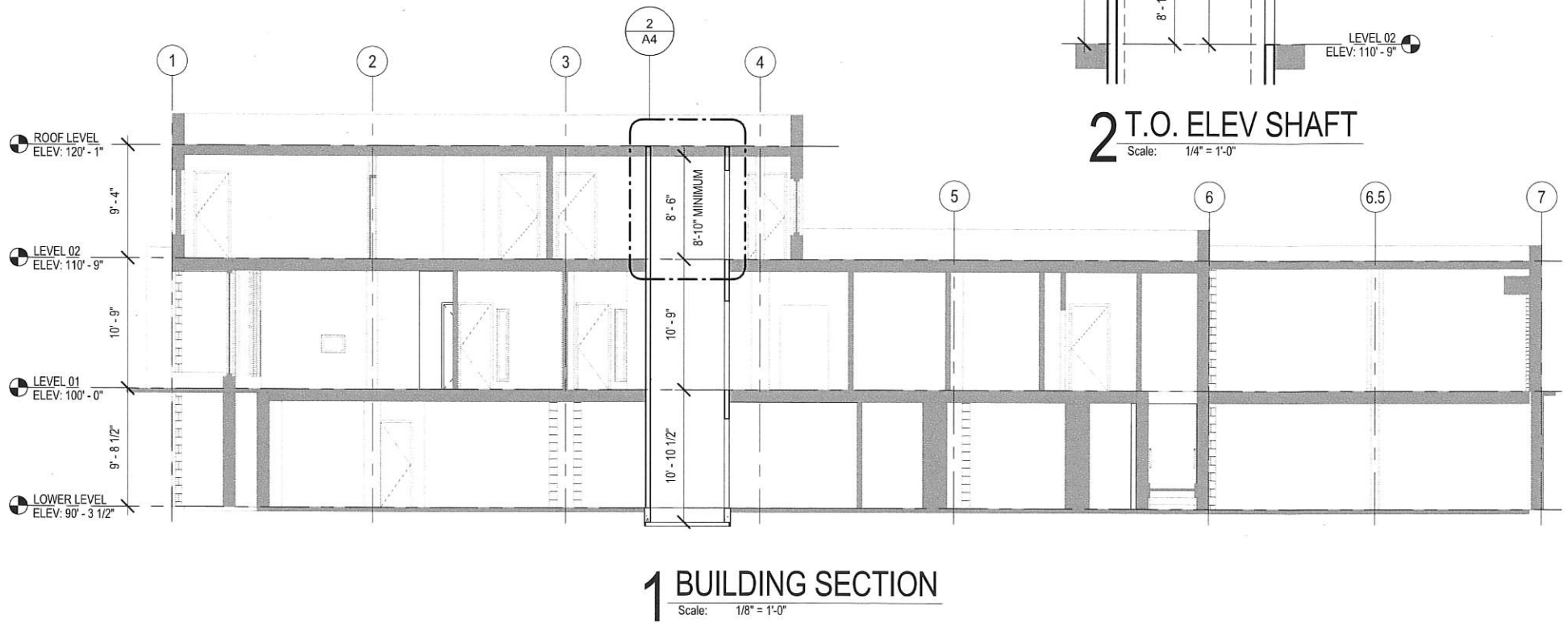
DATE: 09/20/2018

CITY OF MILWAUKEE - OFFICE OF AFRICAN AMERICAN AFFAIRS

4830 W. FOND DU LAC AVE
MILWAUKEE, WI 53216

DAN BEYER ARCHITECTS

Copyright 2018, Dan Beyer Architects



DATE: 09/20/2018

**CITY OF MILWAUKEE - OFFICE OF
AFRICAN AMERICAN AFFAIRS**

4830 W. FOND DU LAC AVE
MILWAUKEE, WI 53216

DAN BEYER ARCHITECTS

Copyright 2018, Dan Beyer Architects