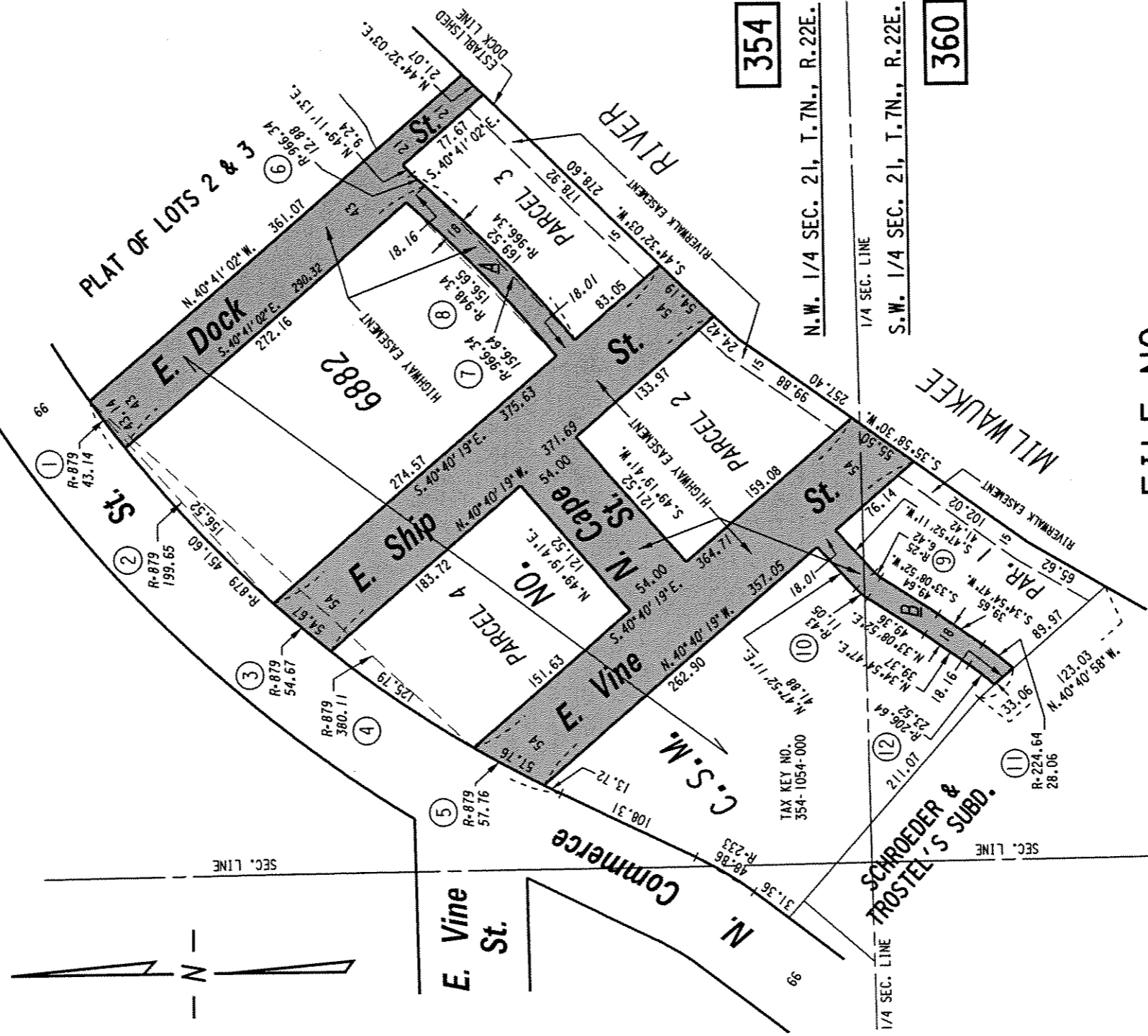


CURVE	RADIUS	ARC	CHORD	CHD. BRG.	CENT. ANG.	DEFL. ANG.
1	879.00'	43.14'	43.13'	S.53°48'32"W.	02°48'42"	01°24'21"
2	879.00'	199.65'	199.22'	S.48°42'28"W.	13°00'50"	06°30'25"
3	879.00'	54.67'	54.66'	N.40°25'08.5"E.	03°33'49"	01°46'54.5"
4	879.00'	380.11'	377.16'	S.42°49'34.5"W.	24°46'37"	12°23'18.5"
5	879.00'	57.76'	57.75'	N.28°33'18.5"E.	03°45'55"	01°52'57.5"
6	966.34'	12.88'	12.88'	N.41°27'0"E.	00°45'50"	00°22'55"
7	966.34'	156.64'	156.47'	N.46°28'39"E.	09°17'14"	04°38'37"
8	948.34'	156.65'	156.47'	S.46°25'22.5"W.	09°27'51"	04°43'55.5"
9	25.00'	6.42'	6.41'	S.40°30'31.5"W.	14°43'19"	07°21'39.5"
10	43.00'	11.05'	11.02'	N.40°30'31.5"E.	14°43'19"	07°21'39.5"
11	224.64'	28.06'	28.04'	S.38°29'27.5"W.	07°09'21"	03°34'40.5"
12	206.64'	23.52'	23.51'	N.38°10'25"E.	06°31'16"	03°15'38"



354

N.W. 1/4 SEC. 21, T.7N., R.22E.

360

S.W. 1/4 SEC. 21, T.7N., R.22E.

FILE NO.
INFRASTRUCTURE SERVICES DIVISION
MILWAUKEE, WISCONSIN

ASSIGNED TO: W.E. FUCHS
DRAWN BY: W.E.F.
PROJECT/GRANT NO.: WK52360060
APPROVED BY:

CH'K'D. BY: W.E. FUCHS
DATE: DEC. 7, 2005
SCALE: 1" = 100'

PROPERTY TO BE
ACQUIRED FOR PUBLIC
STREET AND
ALLEY PURPOSES

maia Lindlich
CENTRAL DRAFTING & RECORDS MANAGER / *AM* CITY ENGINEER