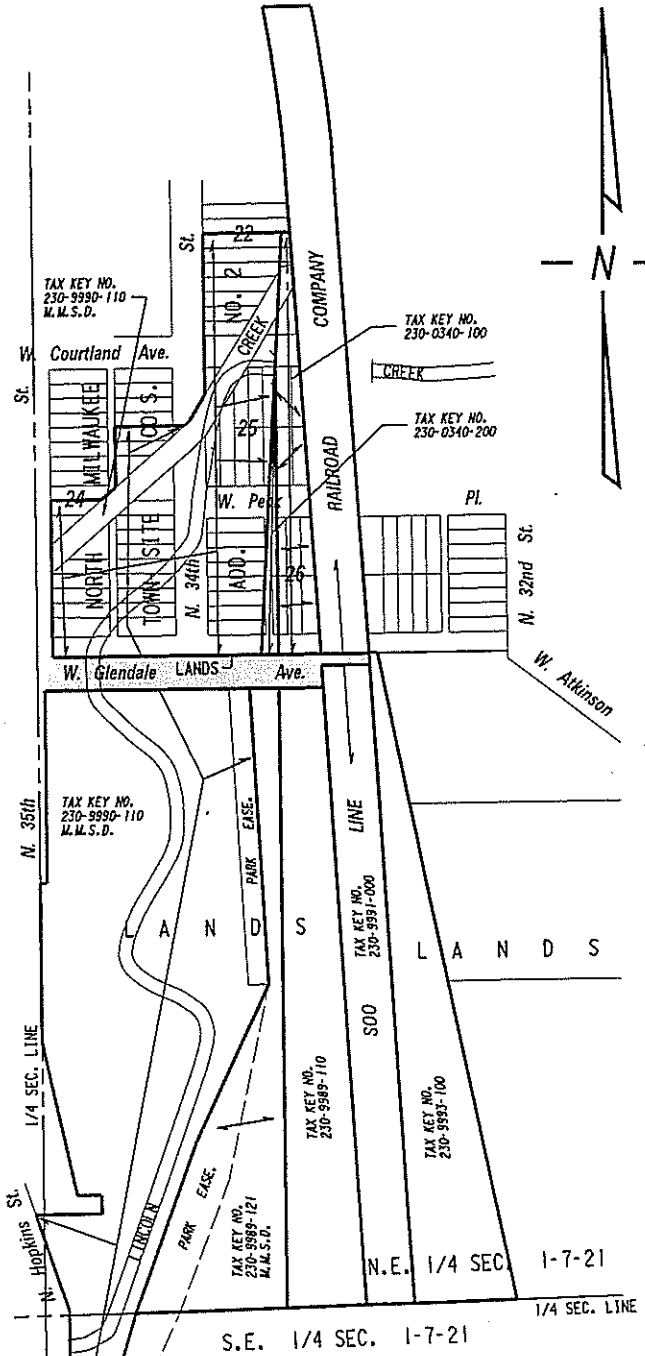


W. Hampton Ave.

N.E. 1/4 SEC. 1, T.7N., R.21E. **230**



 PUBLIC STREET PROPOSED TO BE VACATED

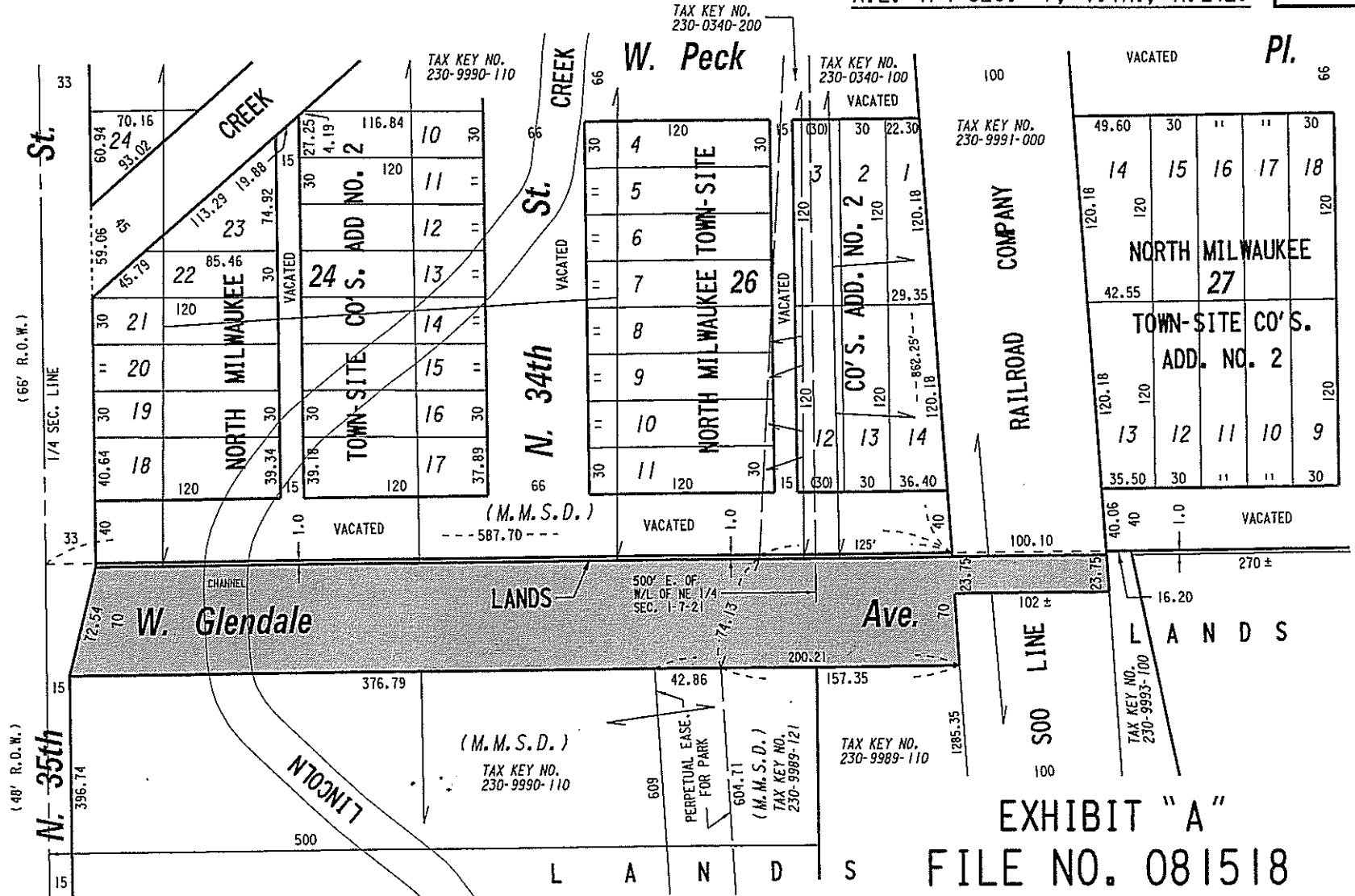


EXHIBIT "A"
FILE NO. 081518
INFRASTRUCTURE SERVICES DIVISION
MILWAUKEE, WISCONSIN

ASSIGNED TO: W.E. FUCHS
 DRAWN BY: W.E.F.
 PROJECT/GRANT NO.: WK52337275
 APPROVED BY:

CH'K'D. BY: W.E. FUCHS
 DATE: JUNE 5, 2009
 SCALE: 1" = 100'

Marcia Lindholm
 CENTRAL DRAFTING & RECORDS MANAGER

[Signature]
 CITY ENGINEER