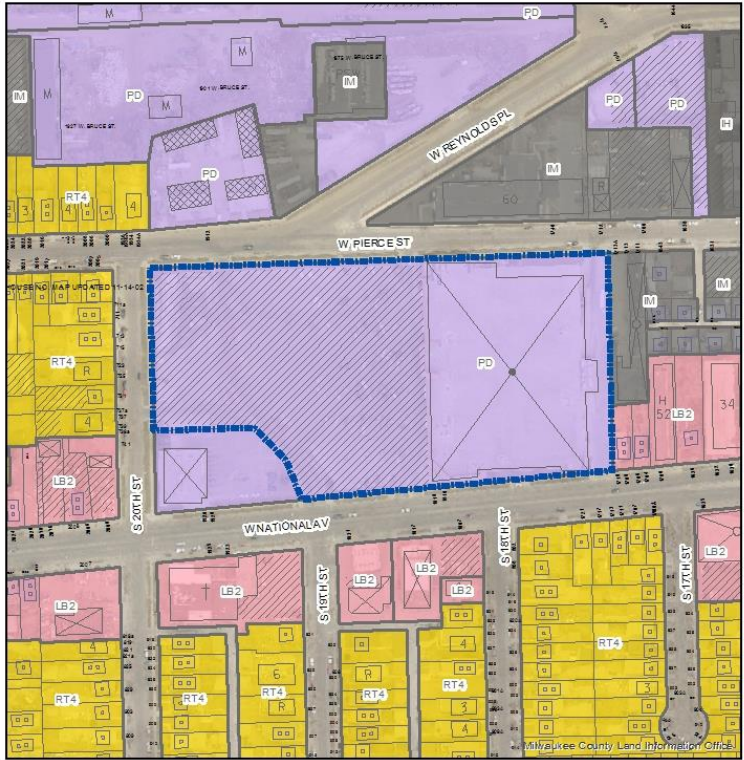


File No. 171212. A substitute ordinance relating to the change in zoning from a Detailed Planned Development, DPD, known as Clarke Square to Institutional, TL, to accommodate the redevelopment of 1818 West National Avenue into a school, located on the north side of West National Avenue, east of South 20th Street, in the 12th Aldermanic District.



FN 171212
 1818 W. National Av.
 DPD (Clarke Square) to TL
 January 2018

- Legend**
- Zoning Change Boundary
- Zoning**
- Commercial - Commercial Service
 - Commercial - Neighborhood Shopping
 - Commercial - Local Business
 - Commercial - Regional Business



File No. 171212. Site Context Photos



View southeast from West Pierce Street



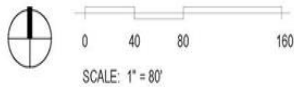
Arial view east from South 20th Street



View northeast from South 19th Street



For Informational Purposes Only



 EXISTING BUILDING :	93,546 sqft
 NEW CONSTRUCTION :	18,158 sqft

© 2017 Plunkett Raysich Architects, LLP - 10-25-2017 - #160039-03

For Informational Purposes Only



© Plunkett Raysich Architects, LLP - 10-25-2017 - #160039-03

EXTERIOR PERSPECTIVE FROM CORNER