

Historic Preservation Commission Meeting January 10, 2012



- Good Afternoon!
Please sign in at the door
- If you wish to speak on an issue or have your opinion noted by the commission, please fill out a form at the door and hand it to us

611 N. Broadway

Exterior alterations

**East Side Commercial
Historic District**



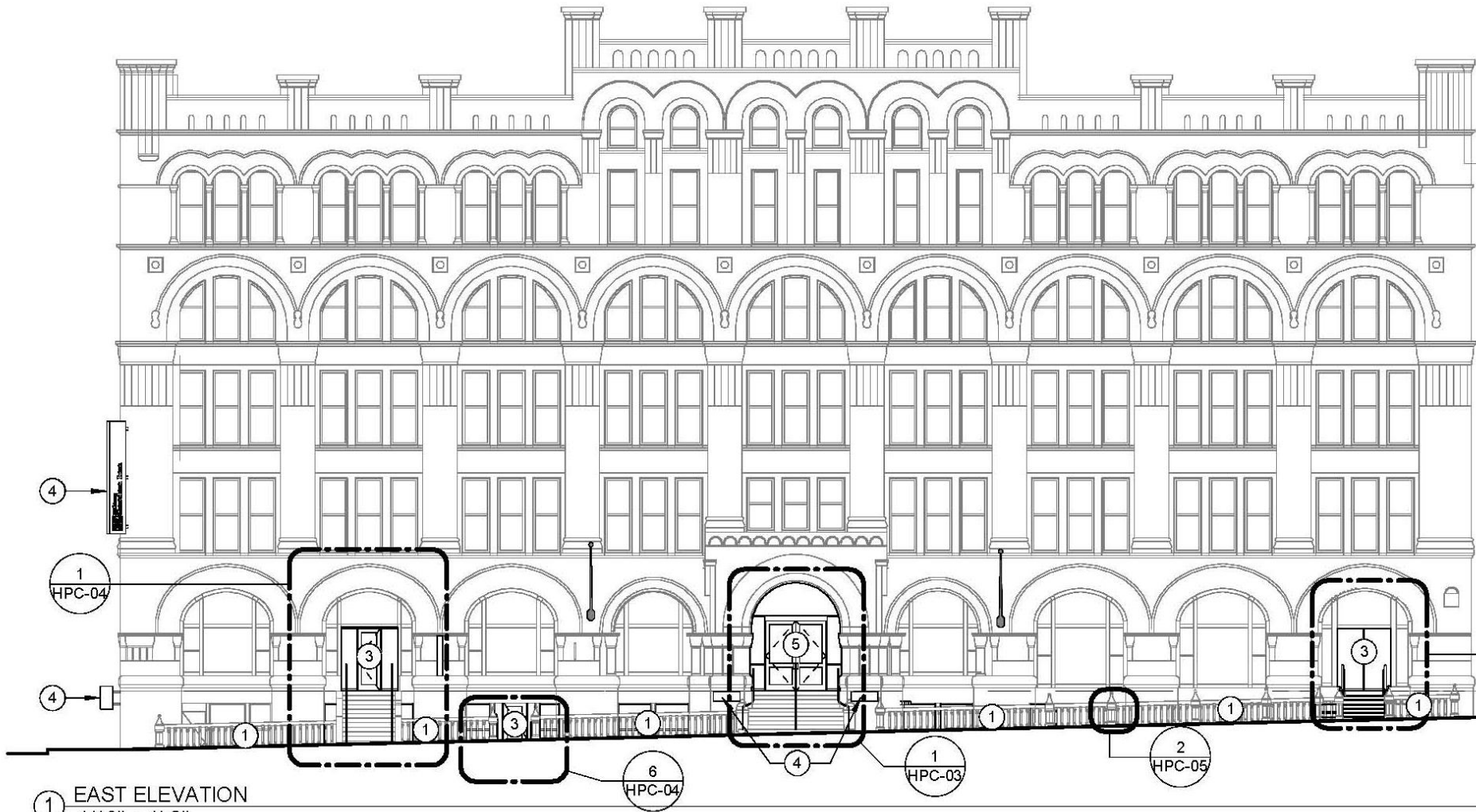


P
A
R
K

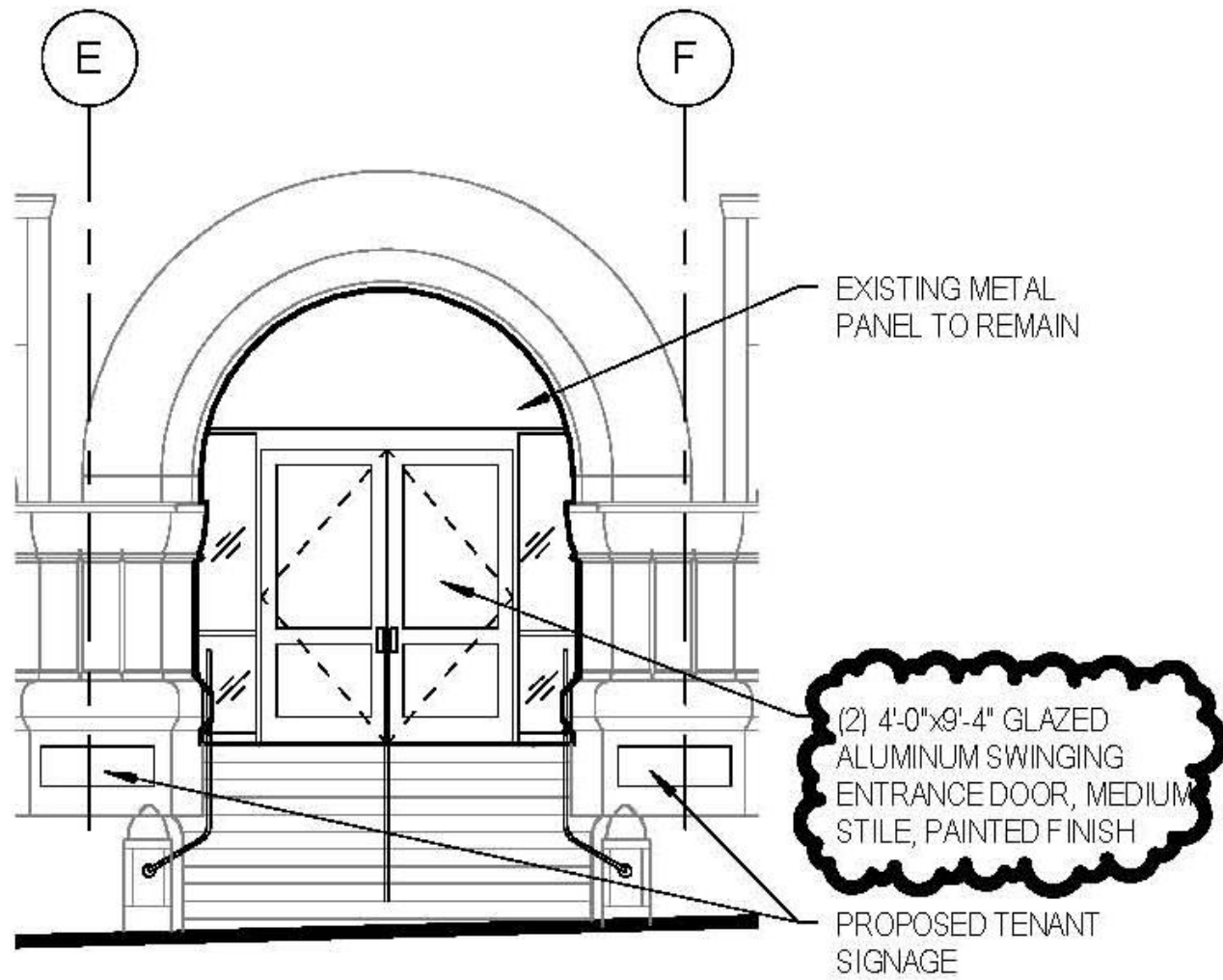
LEFT LANE
MUST
TURN LEFT

TO
EAST
79th

ARDOR

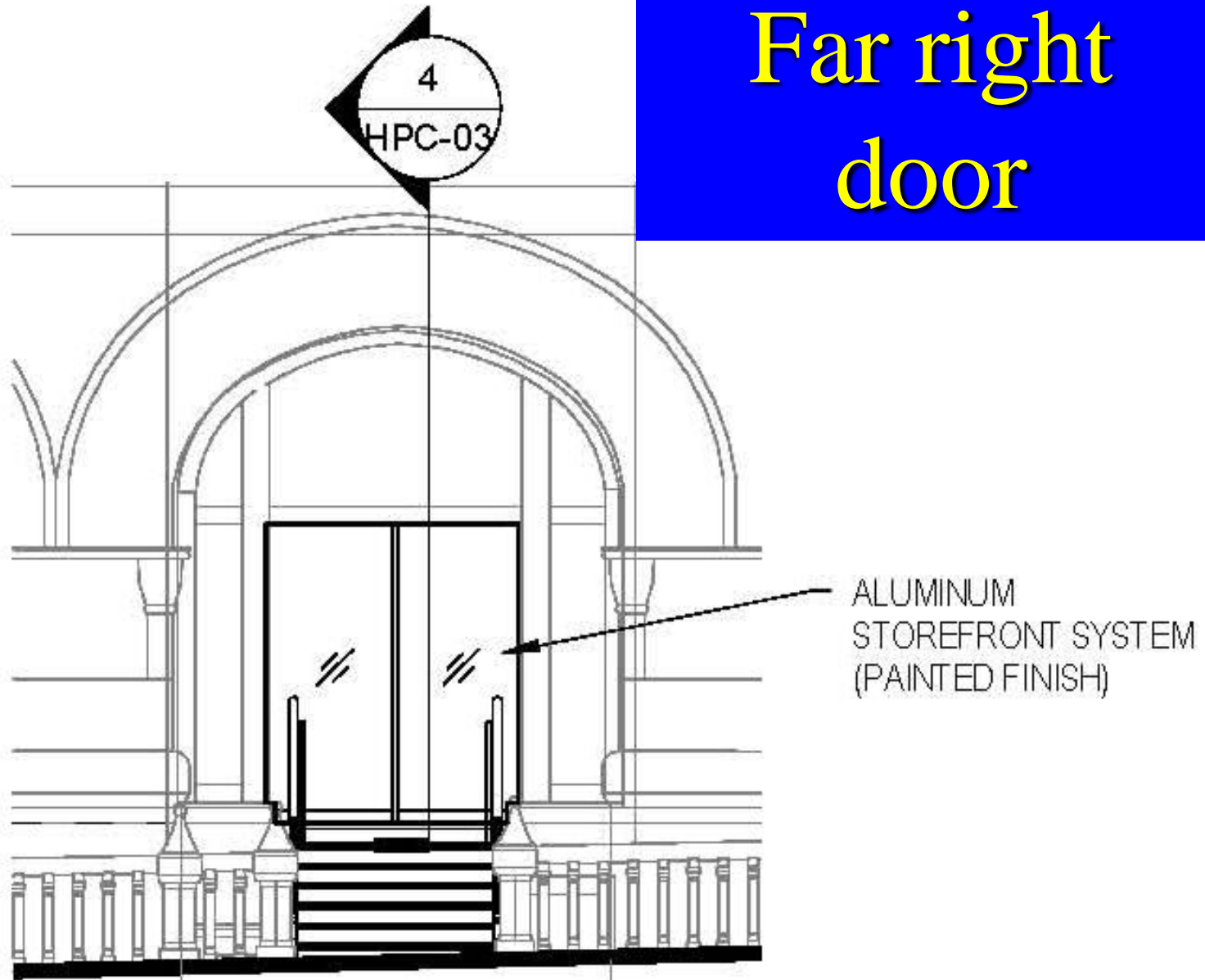


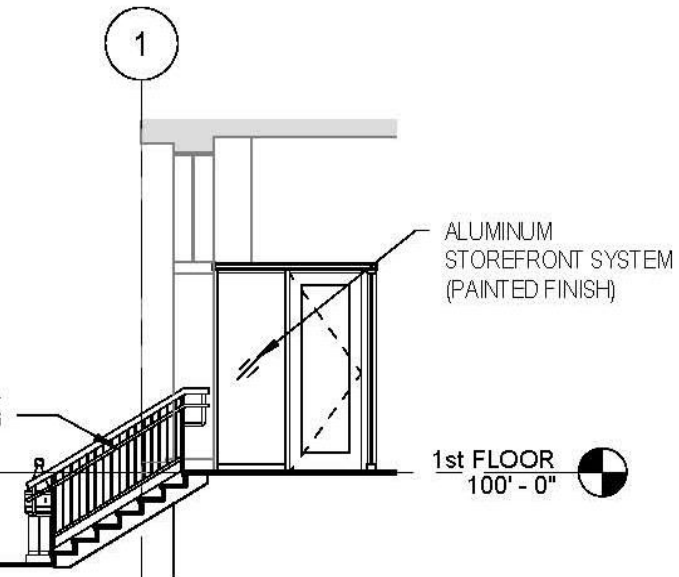




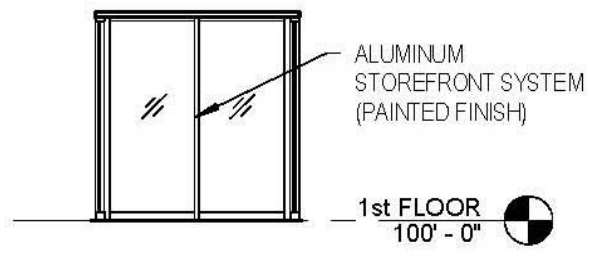
① PARTIAL EAST ELEVATION
 1/8" = 1'-0"

Far right door

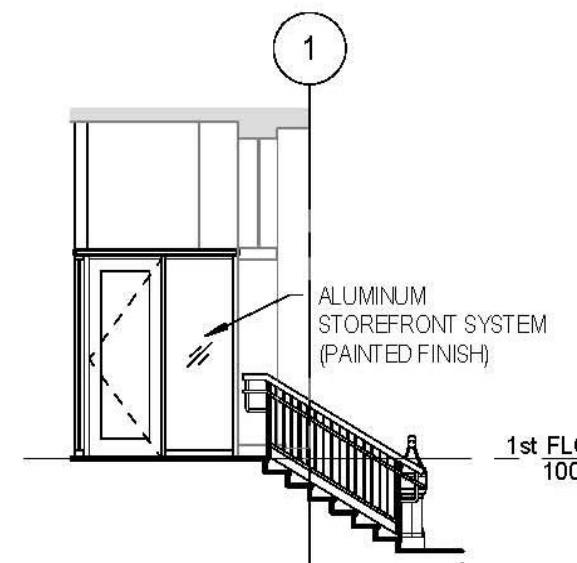




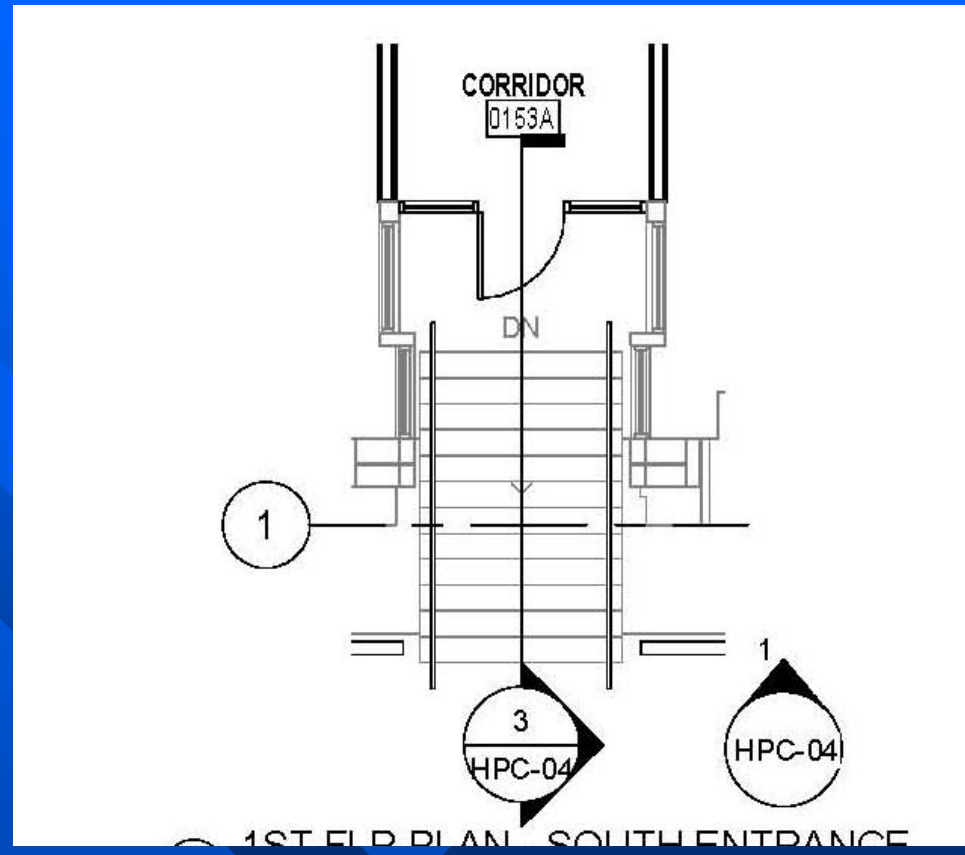
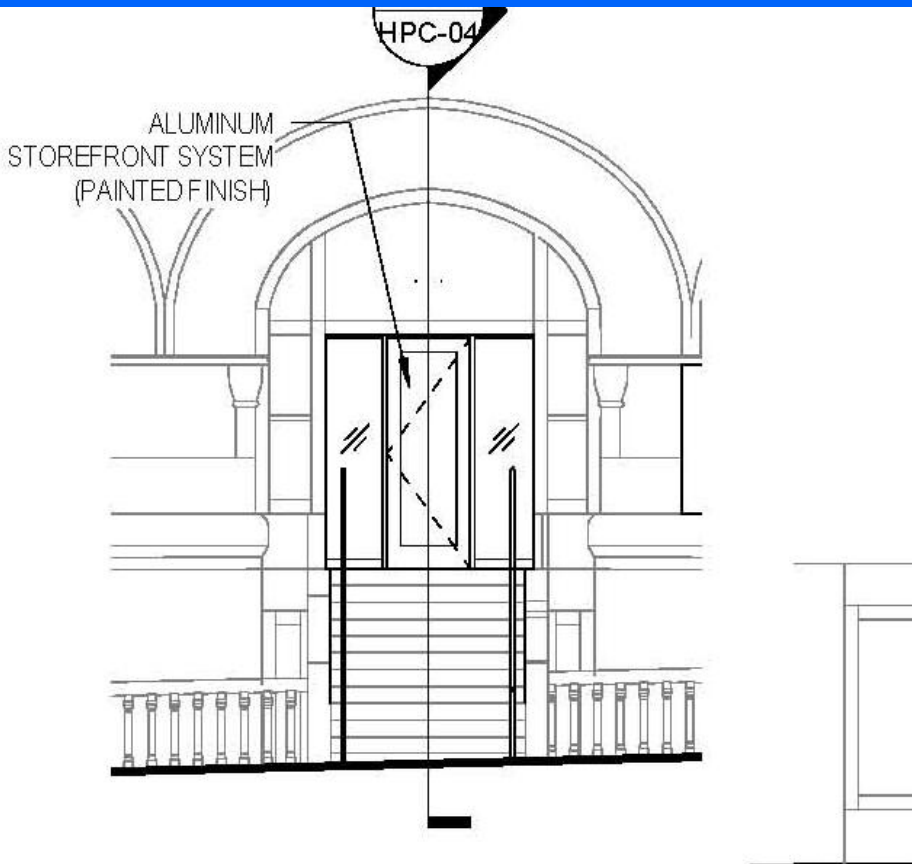
④ STAIR SECTION
1/8" = 1'-0"



⑤ VESTIBULE ELEVATION
1/8" = 1'-0"

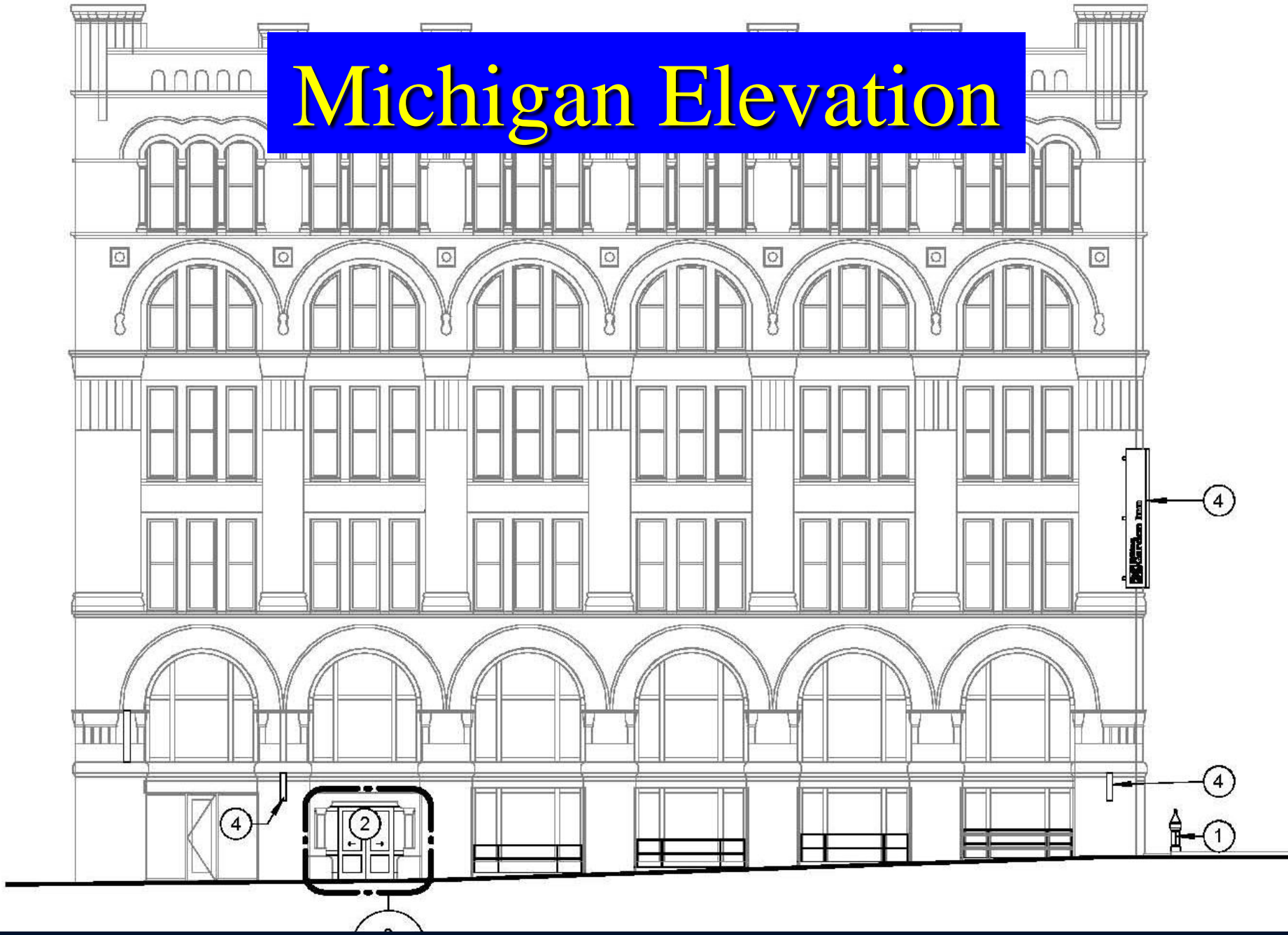


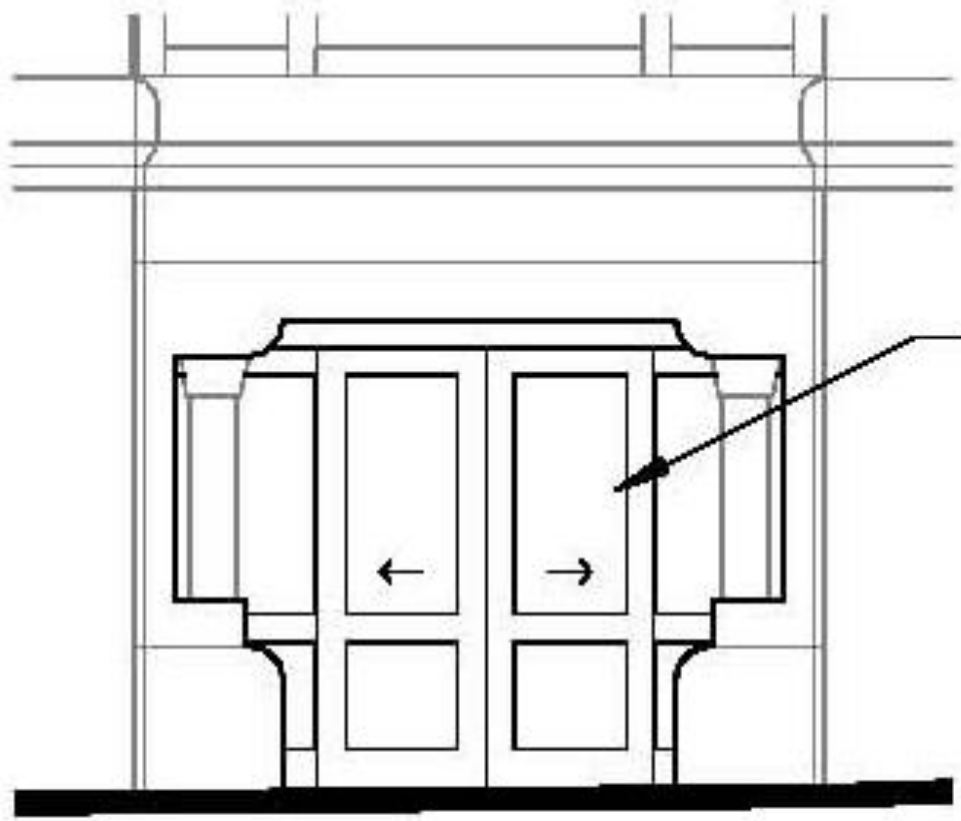
⑥ VESTIBULE ELEVATION
1/8" = 1'-0"



Far left door

Michigan Elevation



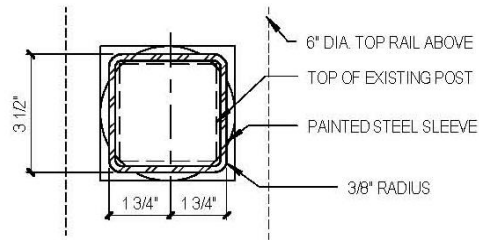


AUTOMATIC SLIDING
ALUMINUM DOOR SYSTEM
(PAINTED FINISH)

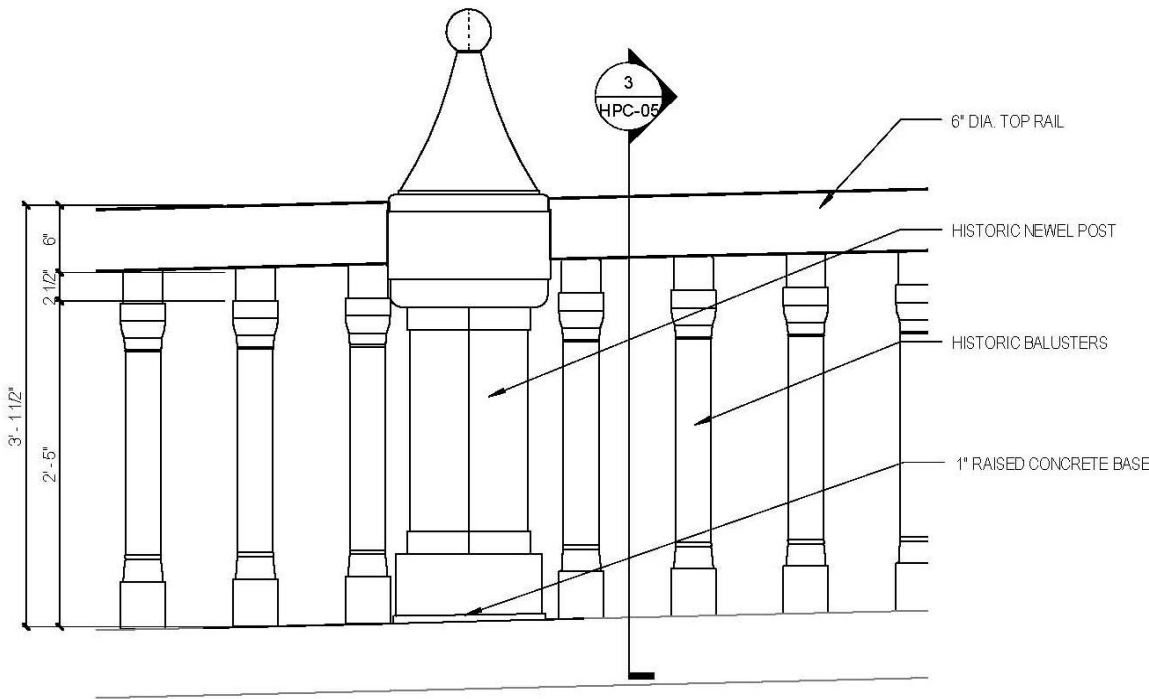


CO
[

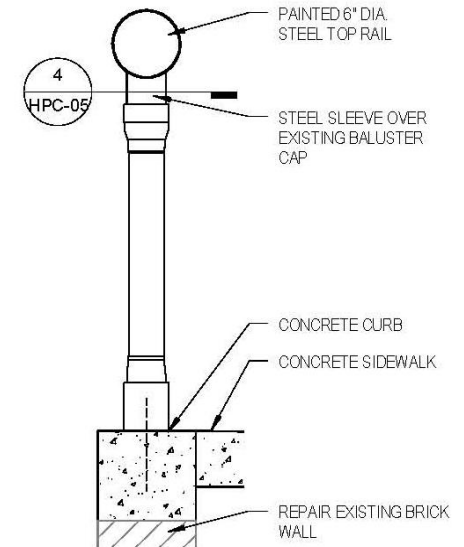
■ Balustrade Restoration



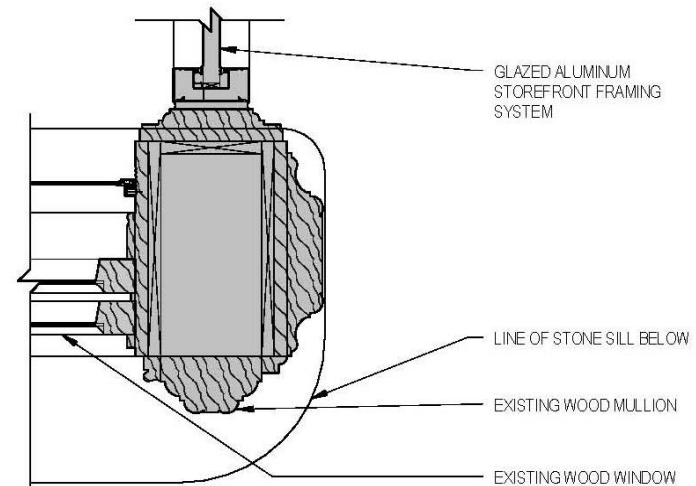
④ POST CUFF DETAIL
3" = 1'-0"



② RAILING ELEVATION
1" = 1'-0"



③ RAILING SECTION
1" = 1'-0"



① NEW VESTIBULE AT EXISTING EXTERIOR OPENING - EAST
1 1/2" = 1'-0"

