

W. Walnut

(130' R.O.W.)

St.

S.W. 1/4 SEC. 19, T.7N., R.22E.

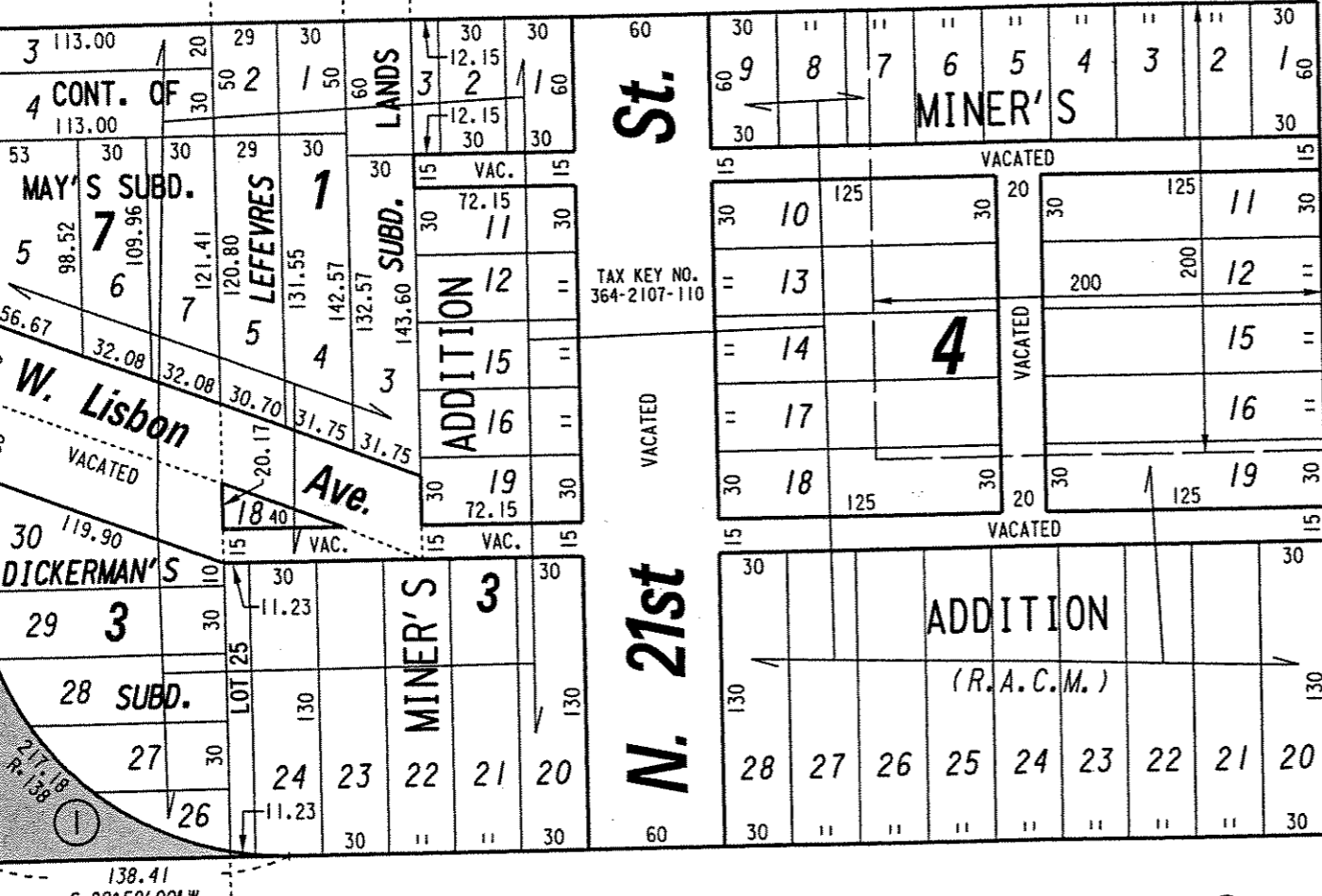
364

St.

(60' R.O.W.)

N. 22nd

N. 00° 09' 10" E.  
138.41



138.41  
S. 89° 59' 00" W.

W. Galena

(60' R.O.W.)

St.

St.

1/4 SEC. LINE  
(60' R.O.W.)

N. 20th

①  
 R= 138.00'  
 A= 217.18'  
 C= 195.45'  
 I < = 90° 10' 10"  
 D < = 45° 05' 05"  
 C.B. = S. 44° 55' 55" E.

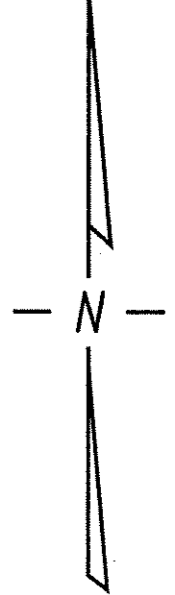


EXHIBIT "A"  
 FILE NO. 061392  
 INFRASTRUCTURE SERVICES DIVISION  
 MILWAUKEE, WISCONSIN

ASSIGNED TO: P.A. VELLA  
 DRAWN BY: P.A.V.  
 PROJECT/GRANT NO.: WK52337241  
 APPROVED BY:  
 CH'K'D. BY: W.E. FUCHS  
 DATE: MARCH 23, 2007  
 SCALE: 1" = 80'

*Maria Lindholm*  
 CENTRAL DRAFTING & RECORDS MANAGER  
*Jeffrey Polenske*  
 CITY ENGINEER