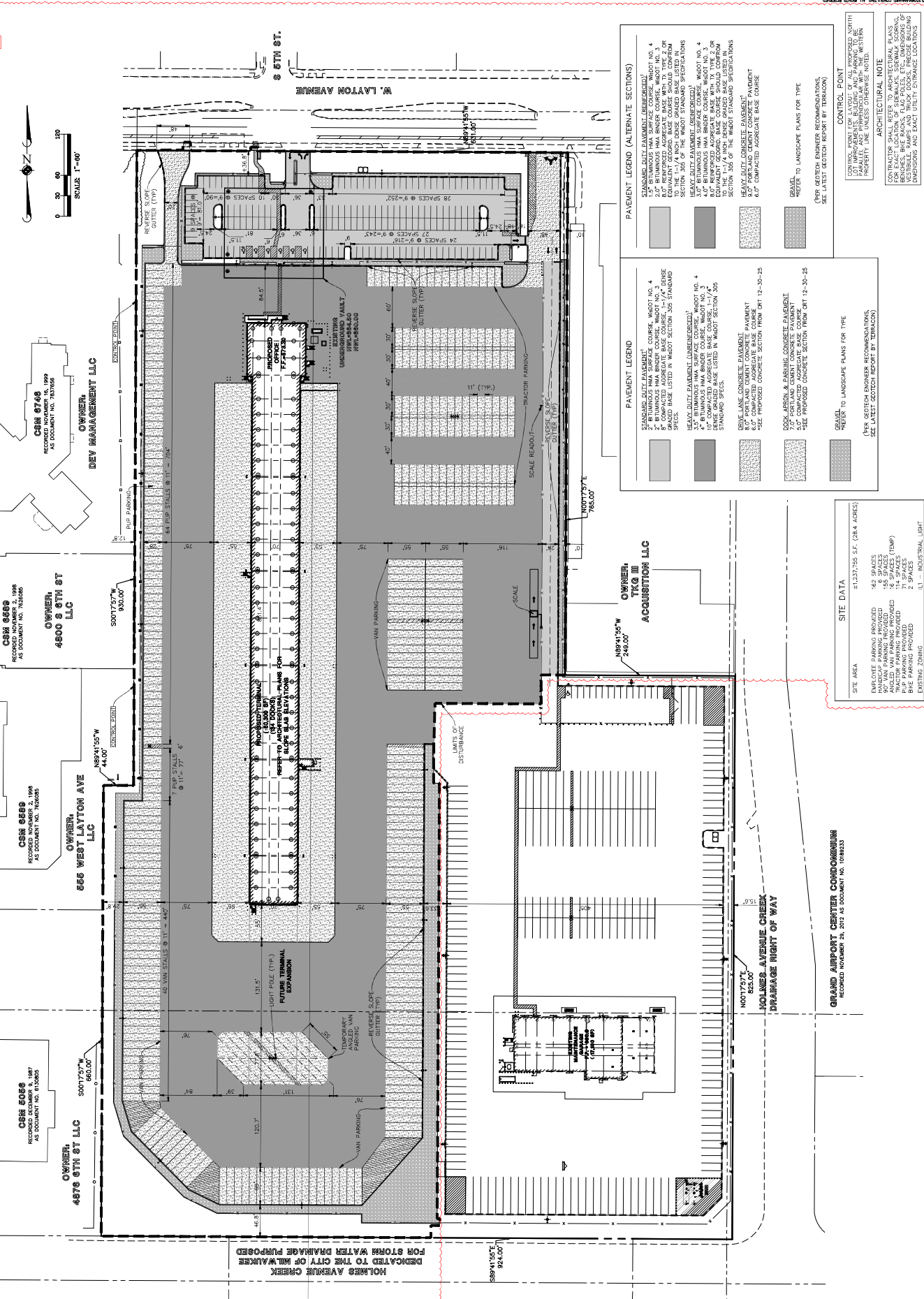


LDL DOMINION FREIGHT LANE - MILWAUKEE (PHASE 2A)
 CITY OF MILWAUKEE, WISCONSIN
 OVERALL SITE DIMENSIONAL AND PAVING PLAN



DATE	REVISION	DESCRIPTION
5/9/2024	REVISED PER CITY COMMENTS	



PAVEMENT LEGEND (ALTERNATE SECTIONS)

- STANDARD DUTY PAVEMENT (UNEMBEDDED)
 - 1.5" BITUMINOUS HMA SURFACE COURSE, WIDTH NO. 4
 - 5" COMPACTED AGGREGATE BASE WITH 1% TYPE 2 OR 3 FINE AGGREGATE, WIDTH NO. 4
 - TO THE 1-1/4" INCH DENSE GRADED BASE LISTED IN SECTION 306 OF THE WISCONSIN STANDARD SPECIFICATIONS
- HEAVY DUTY PAVEMENT (UNEMBEDDED)
 - 1.5" BITUMINOUS HMA SURFACE COURSE, WIDTH NO. 4
 - 5" COMPACTED AGGREGATE BASE WITH 1% TYPE 2 OR 3 FINE AGGREGATE, WIDTH NO. 4
 - EQUIVALENT GRADED BASE COURSE SHOULD CONFORM TO SECTION 306 OF THE WISCONSIN STANDARD SPECIFICATIONS
- DRIVE LANE CONCRETE PAVEMENT (UNEMBEDDED)
 - 6" COMPACTED AGGREGATE BASE COURSE
 - 6" COMPACTED AGGREGATE BASE COURSE
 - 6" COMPACTED AGGREGATE BASE COURSE

SEE LATEST GEOTECH REPORT BY TERRACON

CONTROL POINT
 (SEE GEOTECH ENGINEER RECOMMENDATIONS, SEE LATEST GEOTECH REPORT BY TERRACON)

ARCHITECTURAL NOTE
 CONTRACTOR SHALL REFER TO ARCHITECTURAL PLANS FOR EACH LOCATION OF SEWERALS, SEWERWAY SCOURING, VENTILABLE, PUMPS AND TRUCK DOCKS. PRECISE BUILDING DIMENSIONS AND EXACT UTILITY ENTRANCE LOCATIONS

PAVEMENT LEGEND

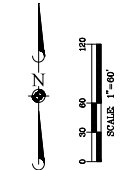
- STANDARD DUTY PAVEMENT (UNEMBEDDED)
 - 1.5" BITUMINOUS HMA SURFACE COURSE, WIDTH NO. 4
 - 5" COMPACTED AGGREGATE BASE WITH 1-1/4" DENSE GRADED BASE LISTED IN WISCONSIN SECTION 306 STANDING
- HEAVY DUTY PAVEMENT (UNEMBEDDED)
 - 1.5" BITUMINOUS HMA SURFACE COURSE, WIDTH NO. 4
 - 5" COMPACTED AGGREGATE BASE WITH 1-1/4" DENSE GRADED BASE LISTED IN WISCONSIN SECTION 306 STANDING
- DRIVE LANE CONCRETE PAVEMENT (UNEMBEDDED)
 - 6" COMPACTED AGGREGATE BASE COURSE
 - 6" COMPACTED AGGREGATE BASE COURSE
 - 6" COMPACTED AGGREGATE BASE COURSE

SEE LATEST GEOTECH REPORT BY TERRACON

CONTROL POINT
 (SEE GEOTECH ENGINEER RECOMMENDATIONS, SEE LATEST GEOTECH REPORT BY TERRACON)

SITE DATA

SITE AREA	1,137,735 S.F. (26.4 ACRES)
EMPLOYEE PARKING PROVIDED	42 SPACES
90° VAN PARKING PROVIDED	135 SPACES
TRACTOR PARKING PROVIDED	14 SPACES (TEMP)
BIKE PARKING PROVIDED	2 SPACES
EXISTING ZONING	LI - INDUSTRIAL LIGHT



CSM 8746
 RECORDED NOVEMBER 2, 1998
 AS DOCUMENT NO. 70328
 OWNER:
 DEV MANAGEMENT LLC

CSM 8888
 RECORDED NOVEMBER 2, 1998
 AS DOCUMENT NO. 70300
 OWNER:
 4800 S 6TH ST
 LLC

CSM 8585
 RECORDED NOVEMBER 2, 1998
 AS DOCUMENT NO. 70285
 OWNER:
 606 WEST LAYTON AVE
 LLC

CSM 8088
 RECORDED DECEMBER 8, 1987
 AS DOCUMENT NO. 613025
 OWNER:
 4876 6TH ST LLC

CSM 8455
 RECORDED NOVEMBER 2, 1998
 AS DOCUMENT NO. 70285
 OWNER:
 TRG III
 ACQUISITION LLC

HOLMES AVENUE CREEK DEDICATED TO THE CITY OF MILWAUKEE FOR STORM WATER DRAINAGE PURPOSES

GRAND AIRPORT CENTER CONDOMINIUM
 RECORDED NOVEMBER 29, 2012 AS DOCUMENT NO. 1018933