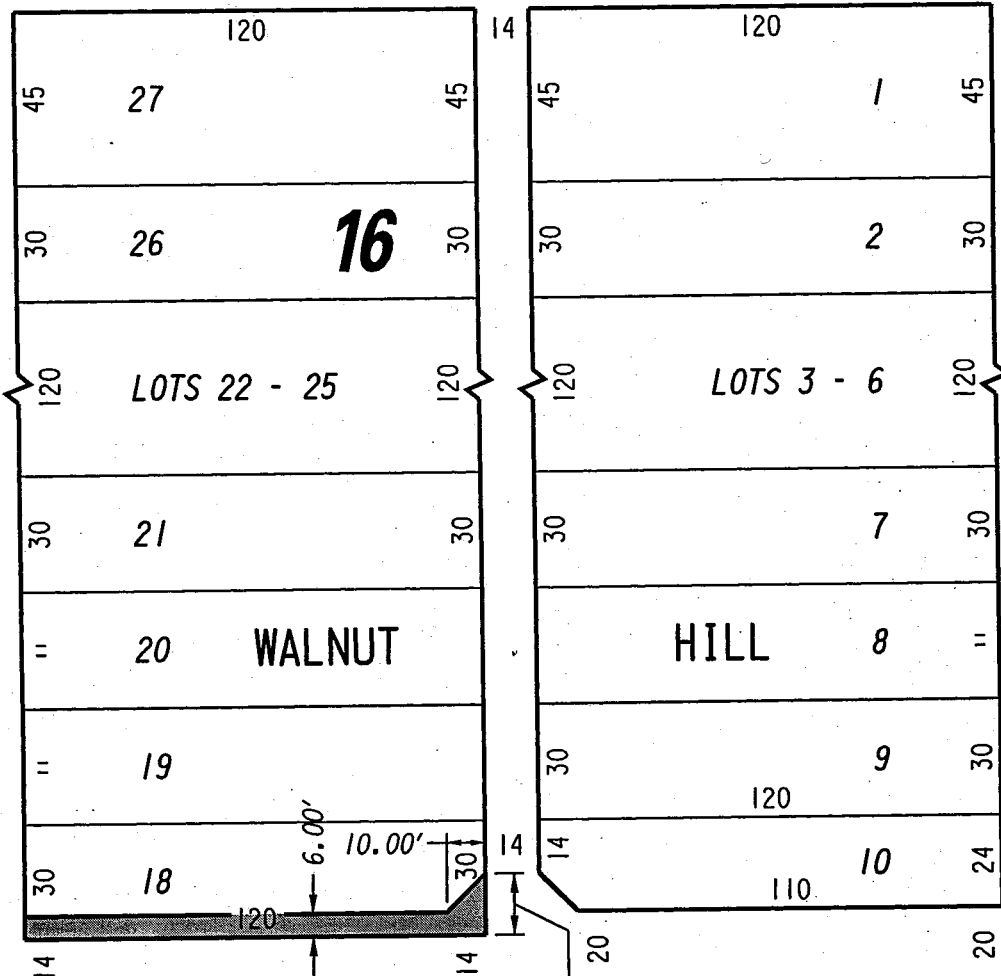


S.E. 1/4 SEC. 24, T.7N., R.21E.

365

W. Cherry St. (60' R.O.W.)



N. 34th

N. 33rd

W. Vliet St. (65' R.O.W.)

500 LINE ROALROAD CO.

HIGHWAY EASEMENT

FILE NO.

INFRASTRUCTURE SERVICES DIVISION

MILWAUKEE, WISCONSIN

ASSIGNED TO: W.E. FUCHS

DRAWN BY: W.E.F.

PROJECT/GRANT NO.: WK52360043

APPROVED BY:

CH'K'D. BY: M.C. WILLIAMS

DATE: DEC. 11, 2002

SCALE: 1" = 50'



PORTION OF CITY PROPERTY TO BE DEDICATED FOR PUBLIC ALLEY PURPOSES

Marcia Lindholm CENTRAL DRAFTING & RECORDS MANAGER

[Signature] CITY ENGINEER