



Wheaton Franciscan Healthcare
St. Joseph

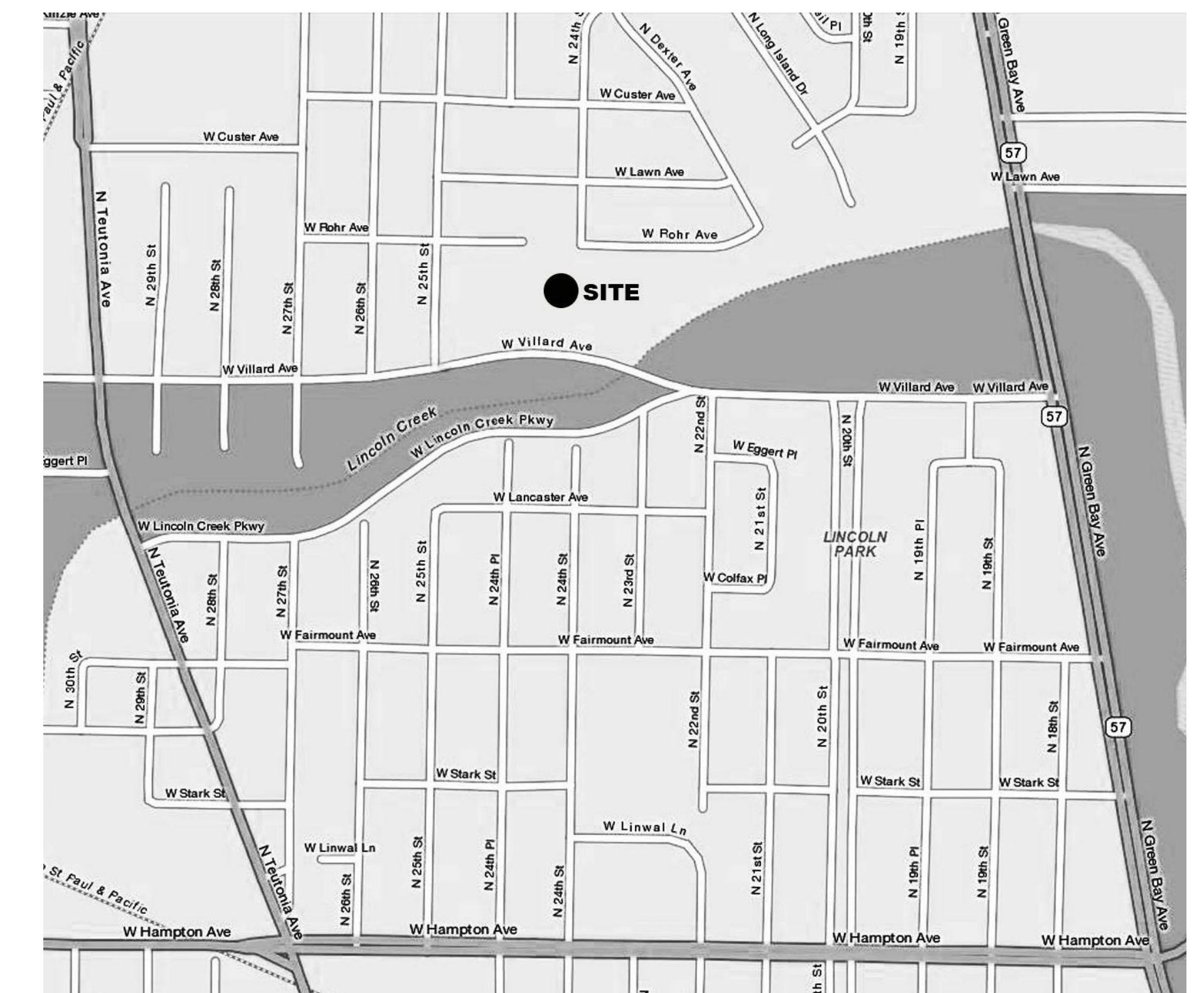
Family Care Center

In Partnership with the Medical College of Wisconsin

WHEATON FRANCISCAN HEALTHCARE FAMILY CARE CENTER

2400 W. VILLARD AVE.
MILWAUKEE, WI 53209

Project Location



Vicinity Key Plan

Client Logo

Flad Project Number
11022-00

Description of Package
DETAILED PLAN DEVELOPMENT
CITY OF MILWAUKEE

Date
05/16/2011



Project Image - Rendering

Architect

Flad Architects

644 Science Drive
Madison, WI 53711
608-238-2661
608-238-6727 FAX
www.flad.com

Structural Engineer

**Flad Structural
ENGINEERS**

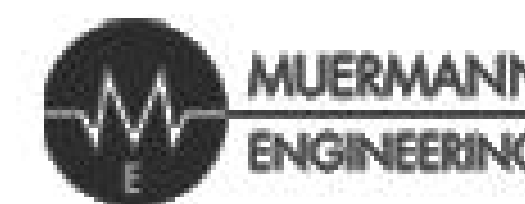
644 Science Drive
Madison, WI 53711
608-238-2661
608-238-6727 FAX
www.flad.com

Civil & Mechanical Engineer



4125 N. 124TH STREET
BROOKFIELD, WI 53005
262-783-6130
www.arnoldandosheridan.com

Plumbing Engineer



W227 N16867 TILLIE LAKE COURT
SUITE 202
JACKSON, WI 53037
262-677-4588
www.me-pe.com

Electrical Engineer



316 N. MILWAUKEE STREET
SUITE 202
MILWAUKEE, WI 53202
414-273-1432
www.geigereng.com

Construction Manager



241 N. BROADWAY
SUITE 302
MILWAUKEE, WI 53202
414-225-5305
www.concordmilwaukee.com

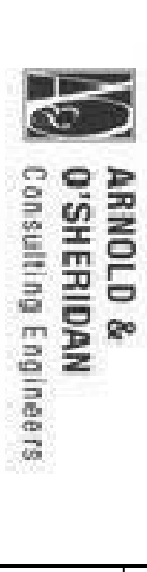
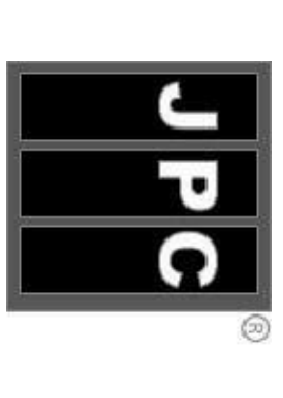
Volume Index

FULL SIZE SHEETS		8 1/2"x11" SHEETS	
SHEET 000	TITLE SHEET/VICINITY MAP	SHEET 000	MISC. SITE PHOTOS (SHTS 001-013)
SHEET 001	PLAT OF SURVEY (SHT. SV-1)	SHEET 001	SITE LIGHTING PRODUCT DATA
SHEET 002	DPD BOUNDARY PLAN (SHT. C-000)	SHEET 002	SITE AND BUILDING SIGNAGE INFORMATION
SHEET 003	NOTES & LEGEND (C-001)		
SHEET 004	SITE PLAN (SHT. C-100)		
SHEET 005	SITE GRADING PLAN (SHT. C-200)		
SHEET 006	SITE UTILITY PLAN (SHT. C-300)		
SHEET 007	LANDSCAPE PLAN (SHT. L-101)		
SHEET 008	BUILDING ELEVATIONS (SHT. A-201)		
SHEET 009	3D BUILDING IMAGES (SHT. A-202)		
SHEET 010	ELECTRICAL SITE PLAN - PHOTOMETRICS (SHT. ES100A)		

- MASTER PLAN KEY NOTES:
- ① PROPOSED FACILITY
 - ② PROPOSED PARKING

Flad Architects

**Flad Structural
ENGINEERS**



engineering-management
facility support



Stamps & Approvals

Project Key Plan

**NOT FOR
CONSTRUCTION**

REV	DATE	DESCRIPTION

Project Title: **Wheaton Franciscan Healthcare Family Care Center**
 As Prepared by the Author/Designer/Engineer

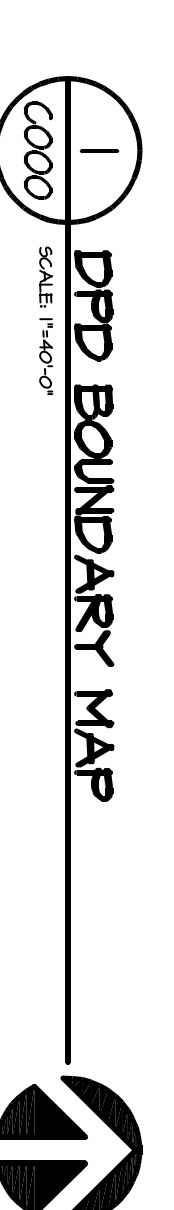
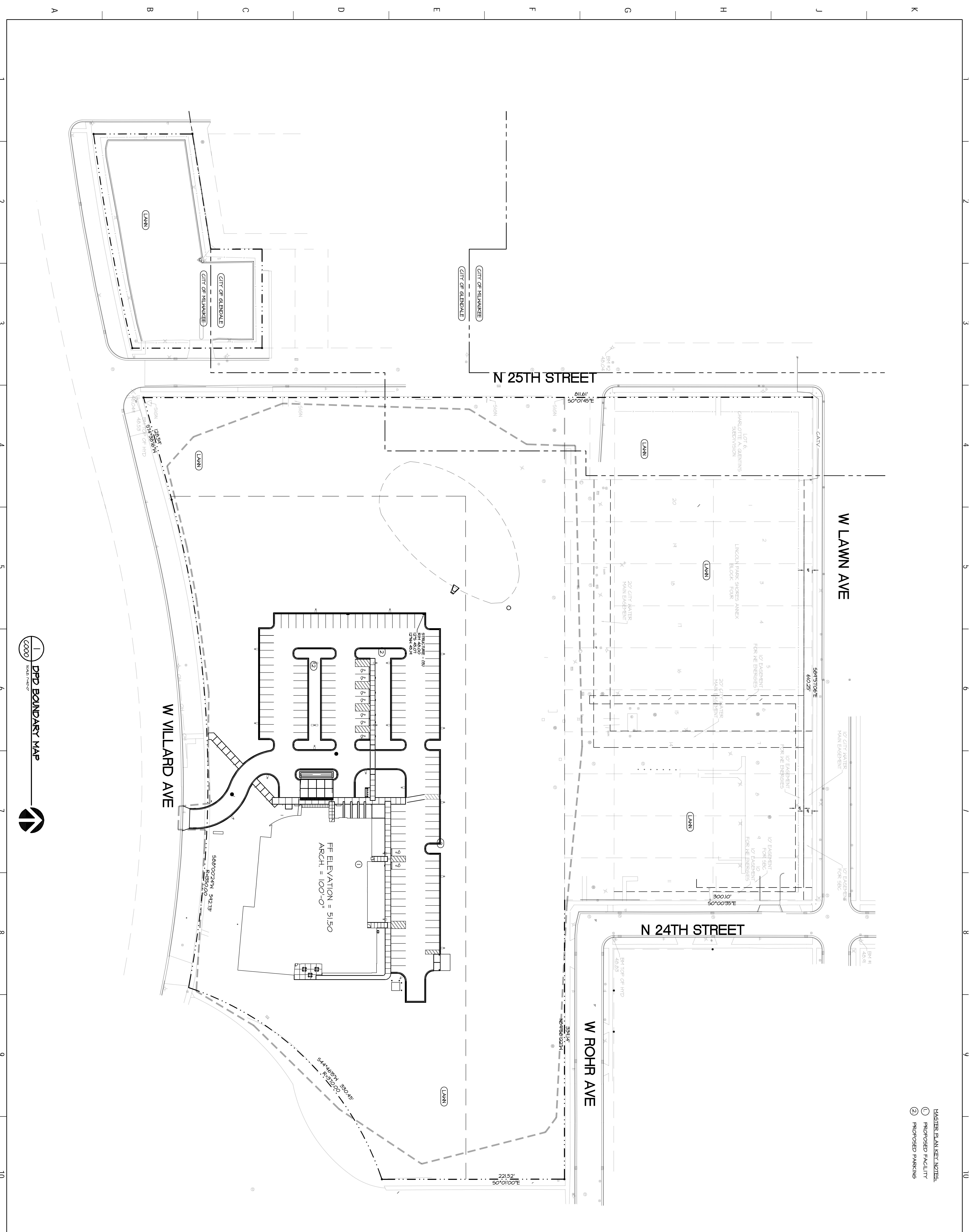
**WHEATON
FRANCISCAN
HEALTHCARE**
FAMILY CARE
CLINIC

2400 W. WILLARD AVE.
MILWAUKEE, WI 53209

Project Phase: **DETAILED PLAN DEVELOPMENT**

Title:	05/16/11	Drawn by:	AAO
Project Number:	1022-00	Checked by:	AAO
Sheet Title:	DPD BOUNDARY MAP		

Street Number: **C-000**



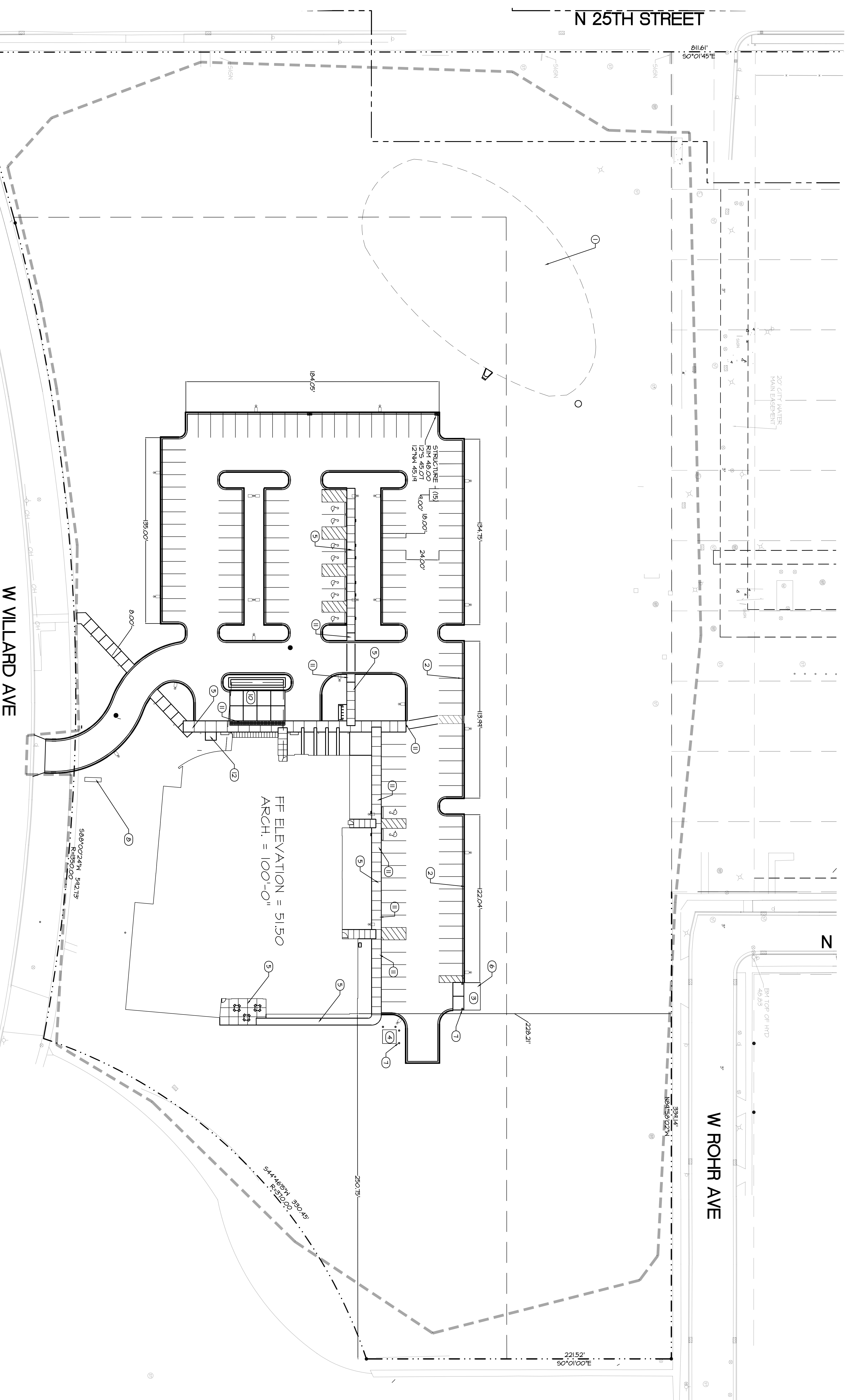
A B C D E F G H J K

1 2 3 4 5 6 7 8 9 10

A B C D E F G H J K

- SITE INFORMATION:**
- TOTAL CAMPUS AREA = 13.37 ACRES
 - TOTAL DISTURBED/PROJECT AREA = 7.36 ACRES
 - TOTAL WALK AND PAVEMENT AREA (INCLUDING FUTURE) = 1.44 ACRES, 118'
 - TOTAL GREEN SPACE = 1111 ACRES, 5248'
 - TOTAL OPEN SPACE = 9.89 ACRES, 798'
 - PARKING STALLS = 127
 - ADA STALLS = 4
 - TOTAL PARKING COUNT = 136
 - GROSS BUILDING SQUARE FOOTAGE = 21,000 SF
 - 5.03 STALLS/1,000 SF
1. ALL DIMENSIONS ARE TO FACE OF CURB OR BUILDING UNLESS NOTED

- SITE KEY NOTES:**
- BIO-FILTRATION BASIN 2' DEPTH
 - FLUME
 - TRASH ENCLOSURE
 - TRANSFER PAVEMENT PAD
 - CONCRETE
 - CONCRETE DIMESTER PAD 4" CONCRETE
 - CONCRETE BOLLARDS
 - MONUMENT SIGN 32 SF MAX.
 - ASPHALTIC CONCRETE PAVEMENT
 - 6" CONCRETE PAVEMENT
 - DETECTABLE MARKING SURFACE
 - BIKE RACK



SITE PLAN
 SCALE: 1/8" = 1'-0"
 SHEET NO. C-100

Flad Architects

Flad Structural ENGINEERS

The Concord Group
 CONSULTING ENGINEERS



ARNOLD & SHERIDAN
 CONSULTING ENGINEERS

G E I
 engineering-management
 facility support



Stamps & Approvals

NOT FOR CONSTRUCTION

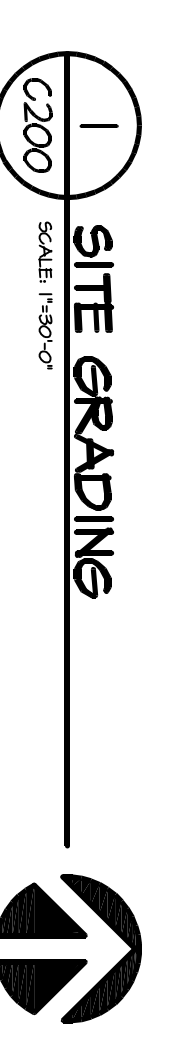
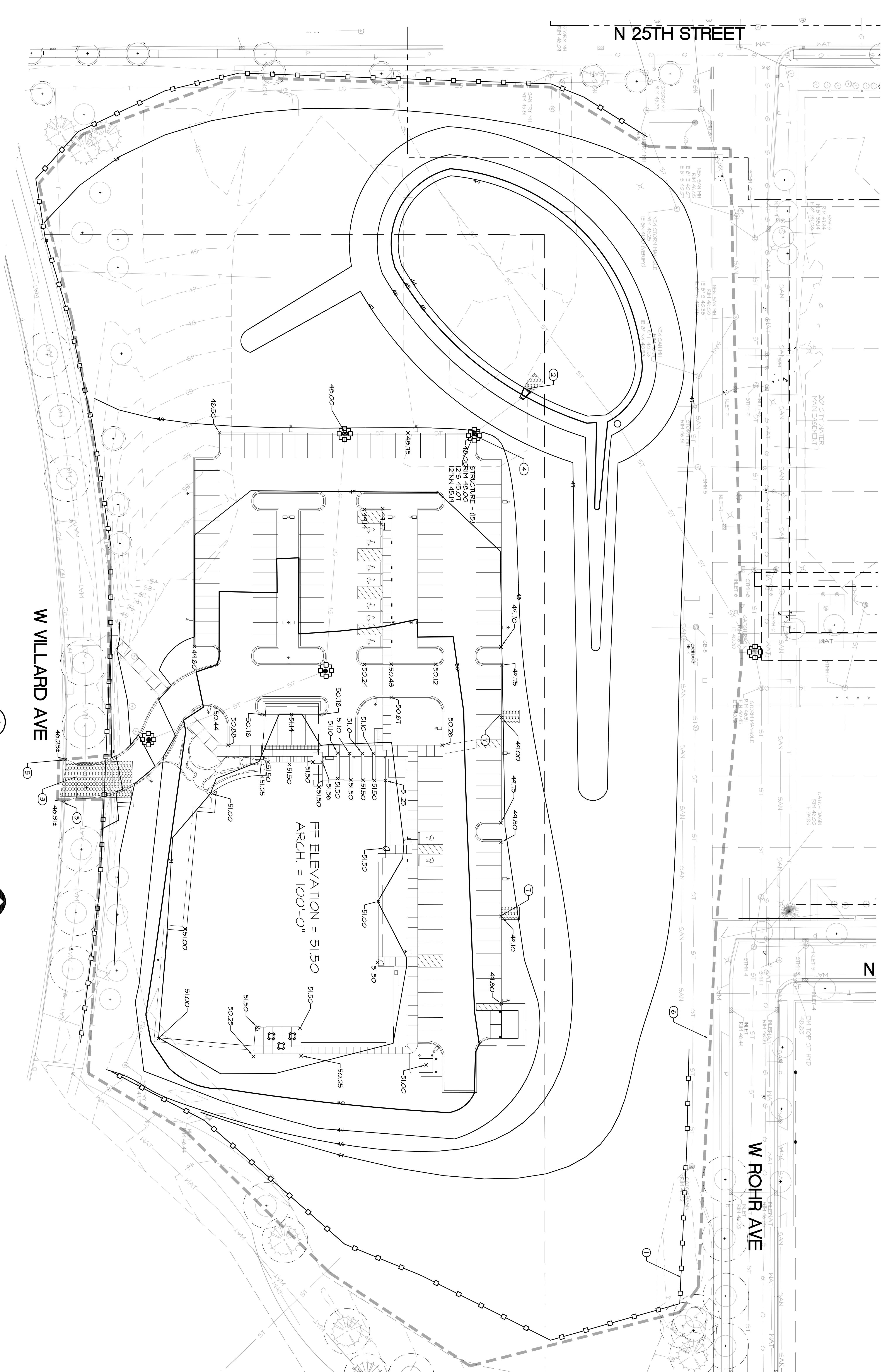
Wheaton Franciscan Healthcare
 Family Care Center
 A Partnership with Wheaton Franciscan Health Services

WHEATON FRANCISCAN HEALTHCARE
 2400 W. VILLARD AVE.
 MILWAUKEE, WI 53209
 FAMILY CARE CLINIC

Project Name		DETAILED PLAN DEVELOPMENT	
Date	05/16/11	Drawn By	A&O
Project Number	11022-00	Checked By	A&O
Sheet Title	SITE PLAN		
Sheet Number	C-100	Rev. No.	

- GRADING NOTES:
- 500 YEAR FLOOD ELEVATION 628.5 NGVD21 = 419 FROM FIRM #507COCOTTE
 - ALL ELEVATIONS ARE PAVEMENT FLOW LINE GRADES UNLESS NOTED.

- GRADING KEY NOTES:
- SILT FENCE
 - RIPRAP OUTLET
 - CONSTRUCTION ENTRANCE
 - INLET PROTECTION
 - HATCH EXISTING GRADE
 - PROJECT LIMITS
 - FLUME



Flad Architects

Flad Structural Engineers



G E I
engineering-management
facility support



Stamps & Approvals

NOT FOR CONSTRUCTION

Project Title: **Wheaton Franciscan Healthcare Family Care Center**
 Project No: **St. Joseph**
 Location: **At the intersection with the Medical Center at the corner of Villard Ave.**

WHEATON FRANCISCAN HEALTHCARE
 2400 W. VILLARD AVE
 MILWAUKEE, WI 53209
FAMILY CARE CLINIC

Project Phase: **DETAILED PLAN DEVELOPMENT**
 Date: **05/16/11**
 Drawn by: **AAO**
 Project Number: **11022-00**
 Checked by: **AAO**
 Street Title: **SITE GRADING**
 Sheet Number: **C-200**

Flad Architects

Flad Structural
ENGINEERS



engineering-management
facility support



Stamps & Approvals

NOT FOR
CONSTRUCTION

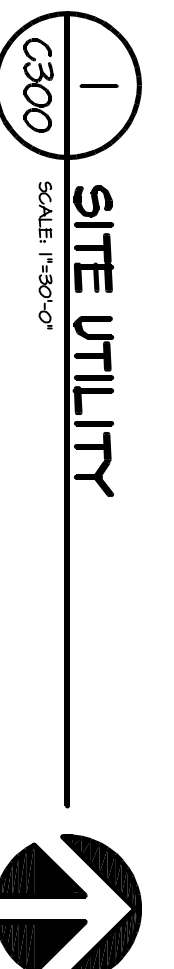
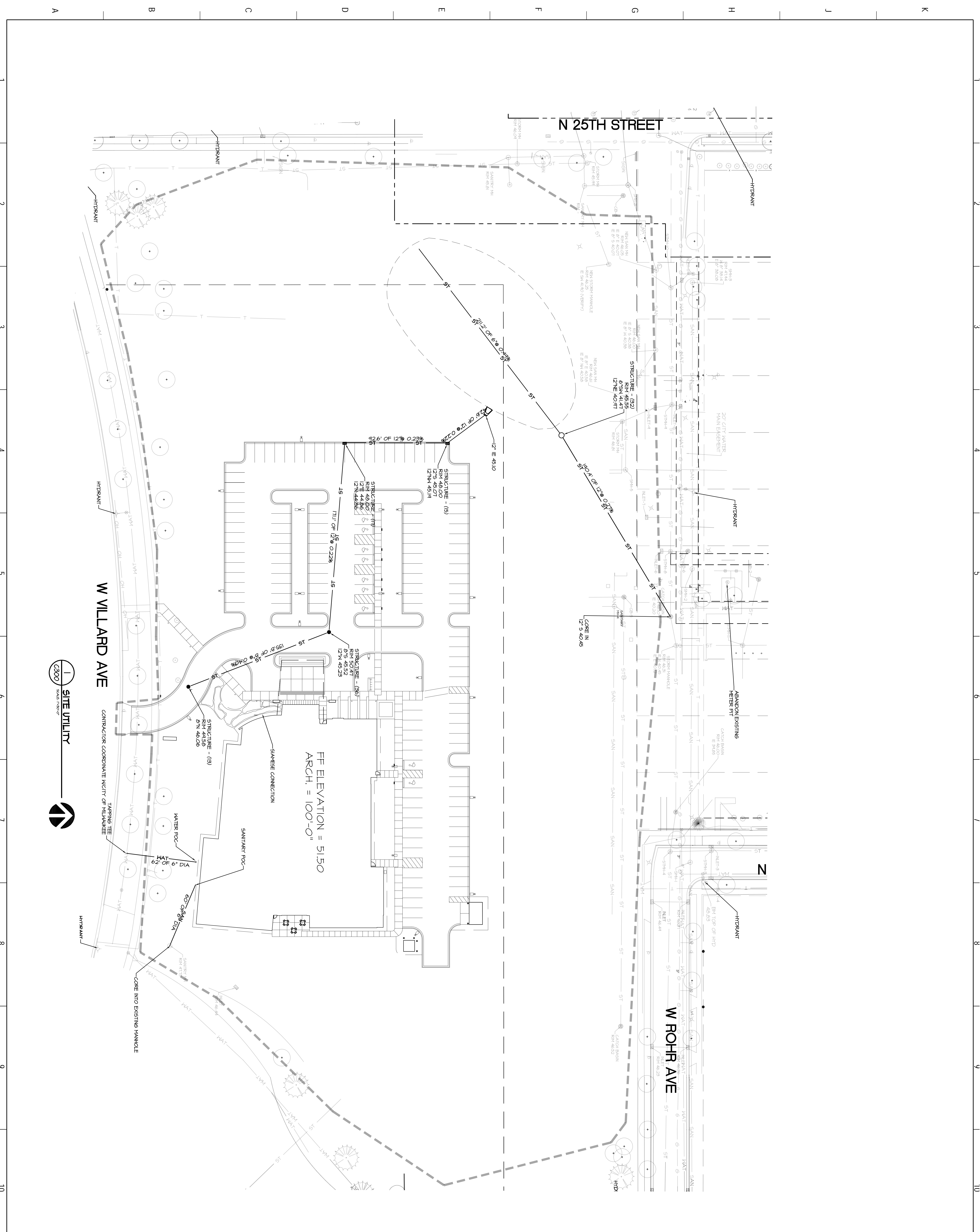
Project Title
Wheaton Franciscan Healthcare
Family Care Center
A Division of Wheaton Franciscan Healthcare

WHEATON
FRANCISCAN
HEALTHCARE
FAMILY CARE
CLINIC
2400 W. VILLARD AVE.
MILWAUKEE, WI 53209

Project Phase
DETAILED PLAN DEVELOPMENT

Date
05/16/11
Drawn by
R&O
Project Number
11022-00
Checked by
R&O

Sheet Number
C-300
Rev. No.



Stamps & Approvals

Project Key Plan

NOT FOR CONSTRUCTION

Rev Date Description

Project Title

Wheaton Franciscan Healthcare
St. Joseph
Family Care Center
In Partnership with the Medical College of Wisconsin

WHEATON FRANCISCAN HEALTHCARE

2400 W. VILLARD AVE.
MILWAUKEE, WI 53209

FAMILY CARE CLINIC

Project Phase

DETAILED PLAN DEVELOPMENT

Date

05/16/11

Project Number

11022-00

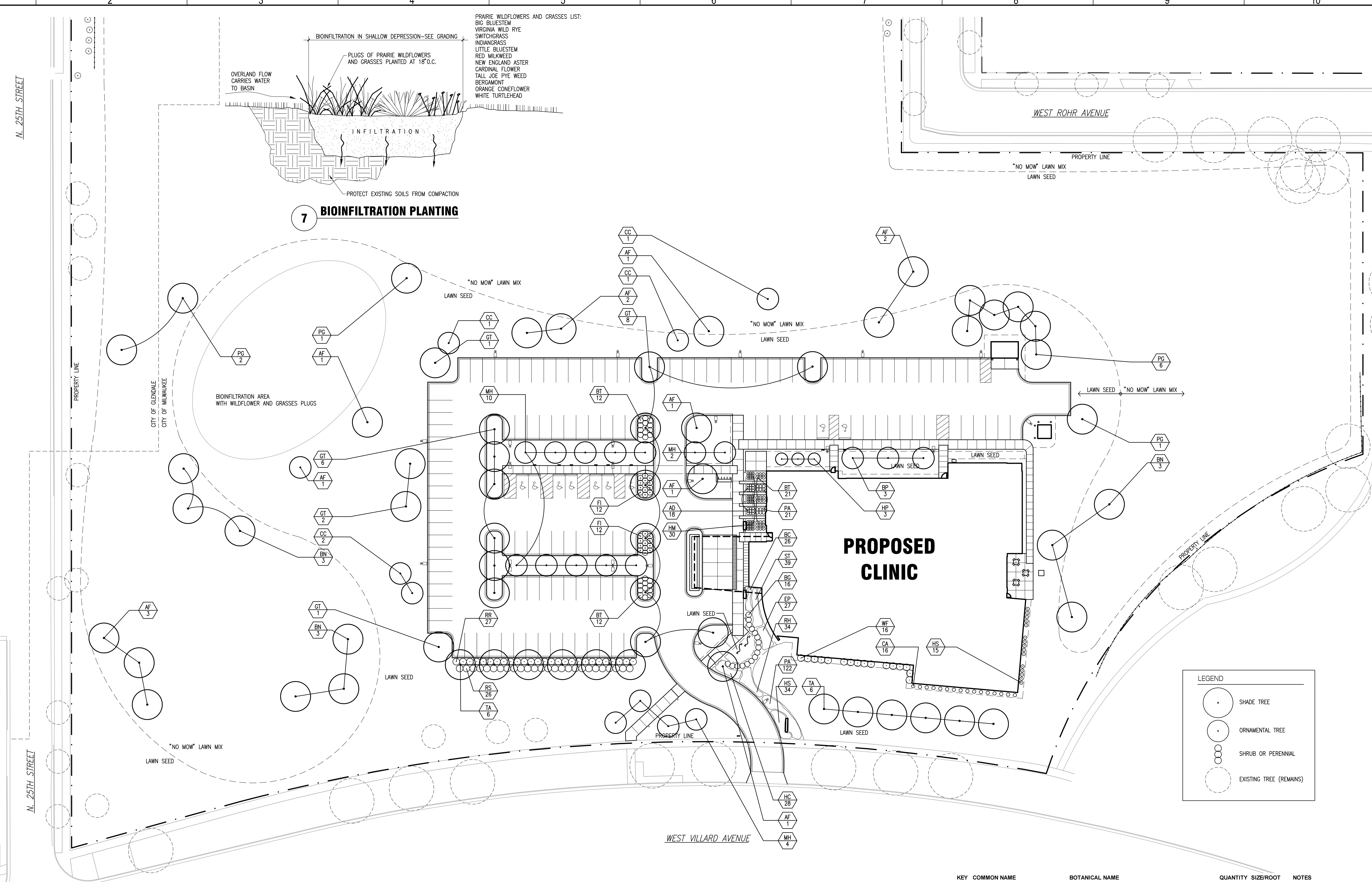
Sheet Title

LANDSCAPE PLAN AND DETAILS

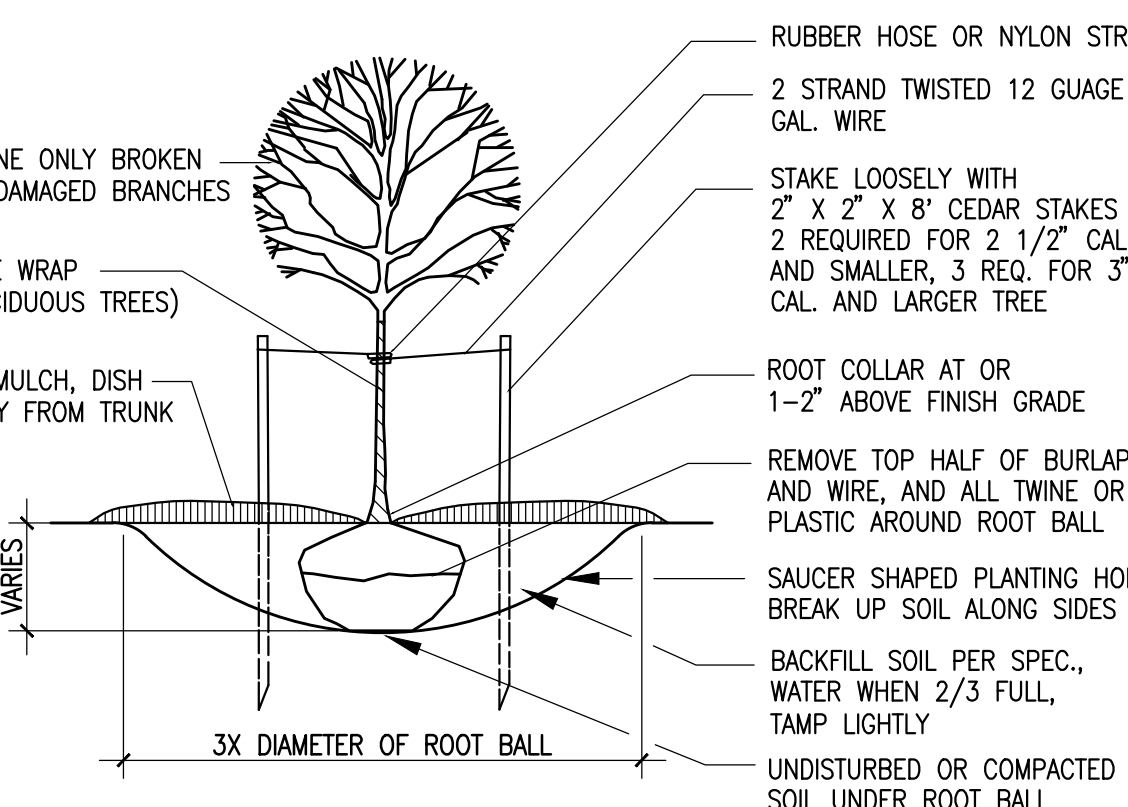
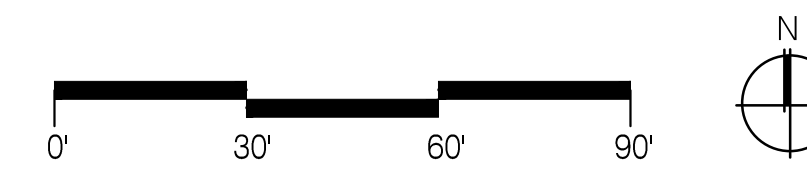
Sheet Number

L-101

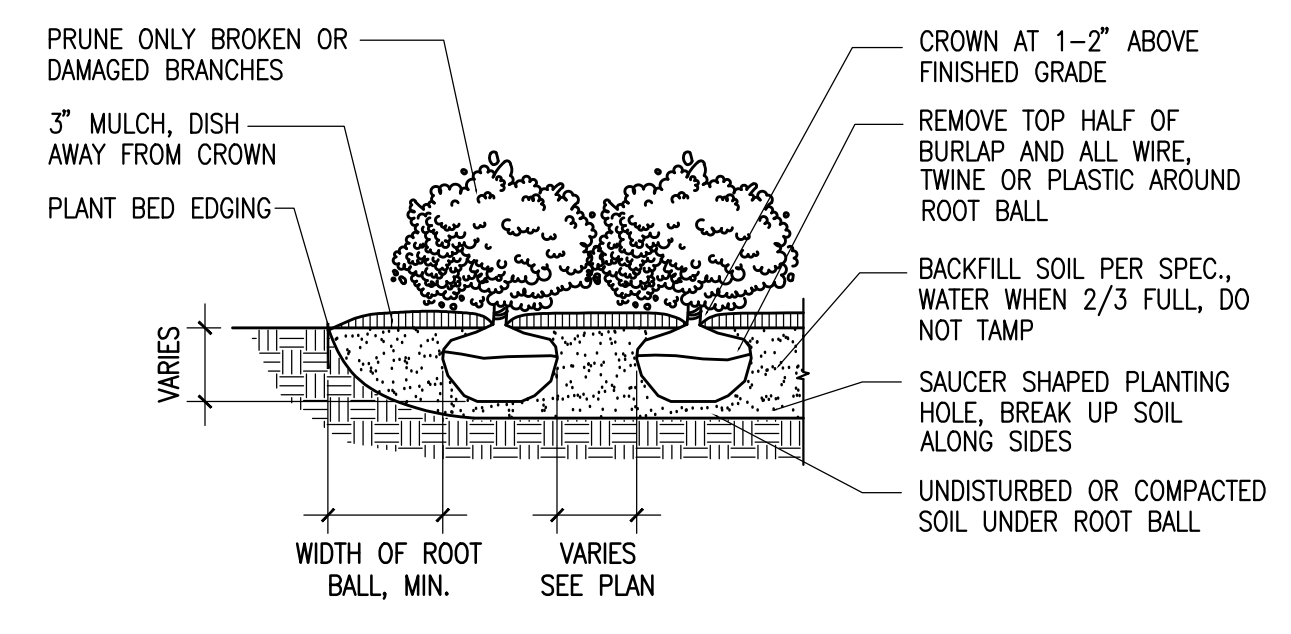
Rev. No.



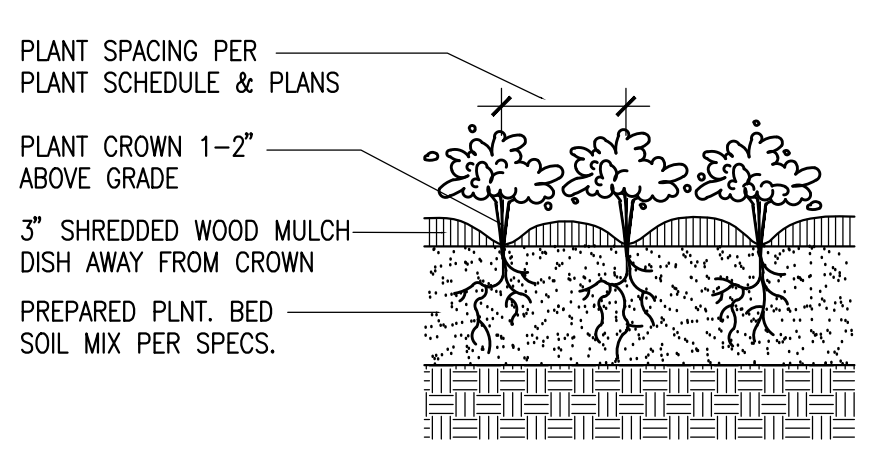
1 LANDSCAPE PLAN
1" = 30'-0"



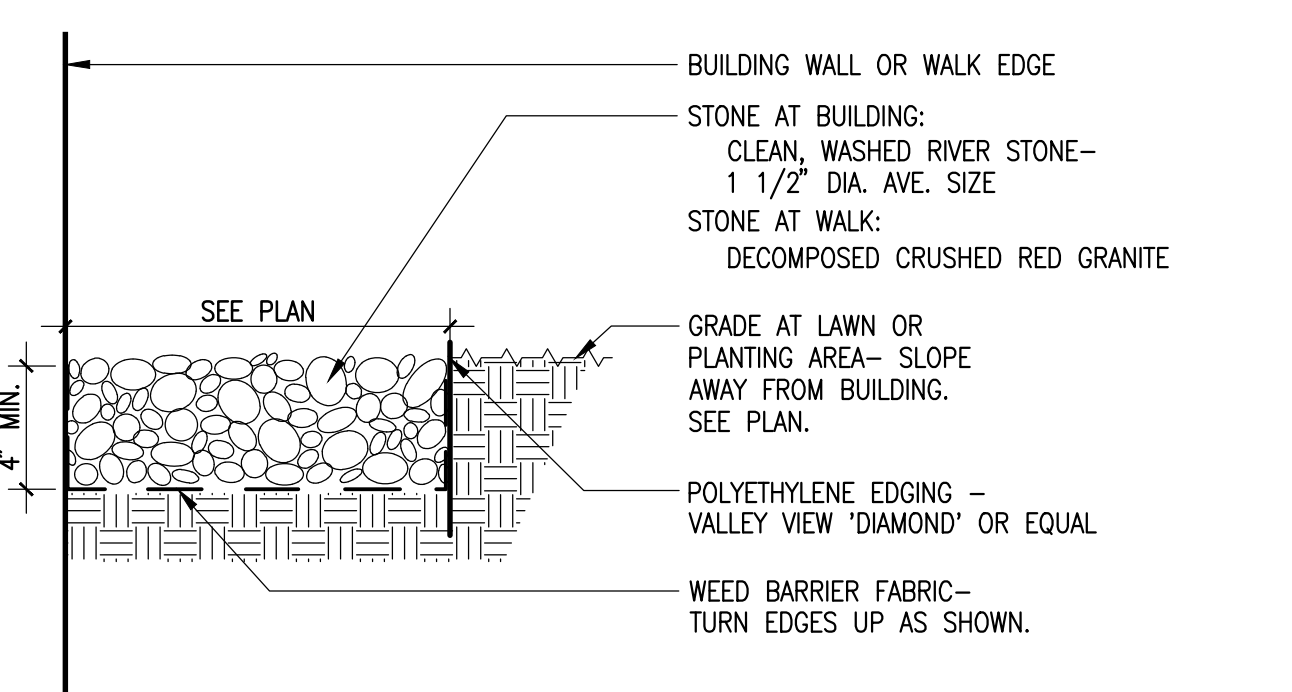
2 TREE PLANTING
NTS



3 SHRUB PLANTING
NTS



4 PERENNIAL PLANTING
NTS



5 WASHED STONE AT BUILDING OR PAVEMENT EDGE
NTS

KEY	COMMON NAME	BOTANICAL NAME	QUANTITY	SIZE/ROOT	NOTES
TREES					
AF	Jeffers Freeman Maple	<i>Acer freemanii</i> 'Jeffers'	13	2.5' cal. - b&b	
BN	River Birch	<i>Betula nigra</i>	9	2.5' cal. - b&b	Select trees with 2-3 leaders
BP	Whitespire Birch	<i>Betula populifolia</i> 'Whitespire'	3	2.5' cal. - b&b	
CC	Thornless Crusader Hawthorn	<i>Crataegus crusgalli</i> var. <i>inermis</i> 'Crusader'	5	2.5' cal. - b&b	
GT	Shademaster Honeylocust	<i>Gleditsia triacanthos</i> var. <i>inermis</i> 'Shademaster'	18	2.5' cal. - b&b	
HP	Tardiva Hydrangea	<i>Hydrangea paniculata</i> 'Tardiva'	3	2 gal. cont.	
MH	Harvest Gold Crabapple	<i>Malus</i> 'Harvest Gold'	16	2.5' cal. - b&b	
PG	Black Hills Spruce	<i>Picea glauca</i>	10	8' height	
TA	Redmond Linden	<i>Tilia americana</i> 'Redmond'	12	2.5' cal. - b&b	
SHRUBS					
BT	Crimson Pygmy Japanese Barberry	<i>Barberis thunbergii</i> 'Crimson Pygmy' ('Atropurea Nana')	45	2 gal.	Cultivar ensures hardiness and size
BU	Green Gem Boxwood	<i>Buxus</i> 'Green Gem'	16	2 gal.	
FI	Happy Centennial Forsythia	<i>Forsythia</i> 'Happy Centennial'	24	2 gal.	Cultivar ensures hardiness and size
RA	Alpine Currant	<i>Ribes alpinum</i>	34	2 gal.	
RR	Frau Dagmar Hastrup	<i>Rosa rugosa</i> 'Frau Dagmar Hastrup'	27	2 gal.	
RS	Snow Pavement Rose	<i>Rosa</i> 'Sneekoppe'	26	2 gal.	
WF	Wine & Roses® Weigela	<i>Weigela florida</i> 'Alexandra'	16		
GROUNDCOVER/PERENNIALS					
AD	Deutschland Astilbe	<i>Astilbe</i> 'Deutschland'	452	1 gal. @ 12" o.c.	
BC	Heartleaf Bergenia	<i>Bergenia cordifolia</i>	26	1 gal. @ 18" o.c.	
CA	Karl Foerster Feather Reed Grass	<i>Calamagrostis x acutiflora</i> 'Karl Foerster'	16	1 gal. @ 24" o.c.	
EP	Purple Coneflower	<i>Echinacea purpurea</i>	27	1 gal. @ 24" o.c.	
HC	Mary Todd Daylily	<i>Hemerocallis</i> 'Mary Todd'	28	1 gal. @ 24" o.c.	
HS	Stella de Oro Daylily	<i>Hemerocallis</i> 'Stella de Oro'	49	1 gal. @ 24" o.c.	
HM	Purple Palace Coralbells	<i>Heuchera micrantha</i> 'Purple Palace'	30	1 gal. @ 18" o.c.	
PA	Dwarf Fountain Grass	<i>Pennisetum alopecuroides</i> 'Haineri'	143	1 gal. @ 18" o.c.	
RH	Black-eyed Susan	<i>Rudbeckia hirta</i>	34	1 gal. @ 24" o.c.	
ST	Autumn Joy Sedum	<i>Sedum telephium</i> 'Autumn Joy'	39	1 gal. @ 24" o.c.	

6 PLANT SPECIES LIST

Stamps & Approvals

Project Key Plan

NOT FOR CONSTRUCTION

Rev Date Description

Project Title

Wheaton Franciscan Healthcare St. Joseph Family Care Center

WHEATON FRANCISCAN HEALTHCARE

2400 W. VILLARD AVE. MILWAUKEE, WI 53209

FAMILY CARE CENTER

Project Phase DETAILED PLAN DEVELOPMENT

Date 05/16/11

Drawn By FLAD

Project Number 11022-00

Checked By FLAD

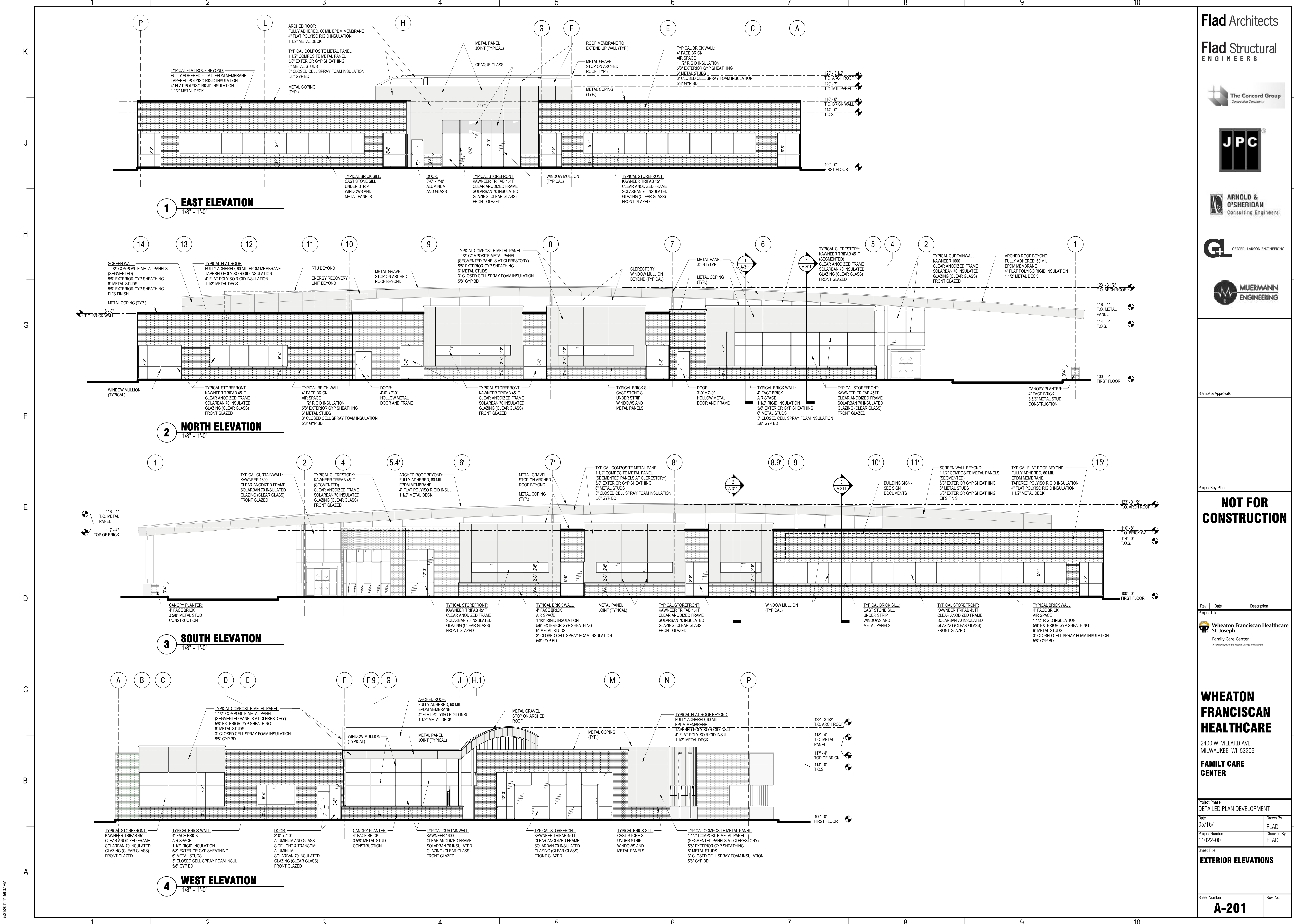
Sheet Title

EXTERIOR ELEVATIONS

Sheet Number

Rev. No.

A-201



1 EAST ELEVATION 1/8" = 1'-0"

2 NORTH ELEVATION 1/8" = 1'-0"

3 SOUTH ELEVATION 1/8" = 1'-0"

4 WEST ELEVATION 1/8" = 1'-0"

5/31/2011 11:38:37 AM



VIEW OF ENTRY LOOKING EAST



VIEW FROM PARKING LOOKING SOUTHEAST



VIEW FROM VILLARD LOOKING WEST

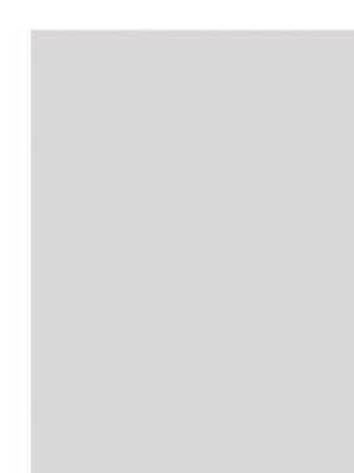


BIRDS EYE VIEW LOOKING NORTHEAST

MATERIALS



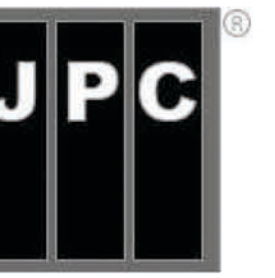
BRICK
COLOR: NUTMEG VELOUR



METAL PANEL
COLOR: LIGHT WARM GREY

Flad Architects

Flad Structural
ENGINEERS



Stamps & Approvals

Project Key Plan

**NOT FOR
CONSTRUCTION**

Rev	Date	Description
Project Title		
 Wheaton Franciscan Healthcare St. Joseph Family Care Center <small>In Partnership with the Medical College of Wisconsin</small>		

**WHEATON
FRANCISCAN
HEALTHCARE**

2400 W. VILLARD AVE.
MILWAUKEE, WI 53209

**FAMILY CARE
CENTER**

Project Phase	
DETAILED PLAN DEVELOPMENT	
Date	Drawn By
05/16/11	FLAD
Project Number	Checked By
11022-00	FLAD

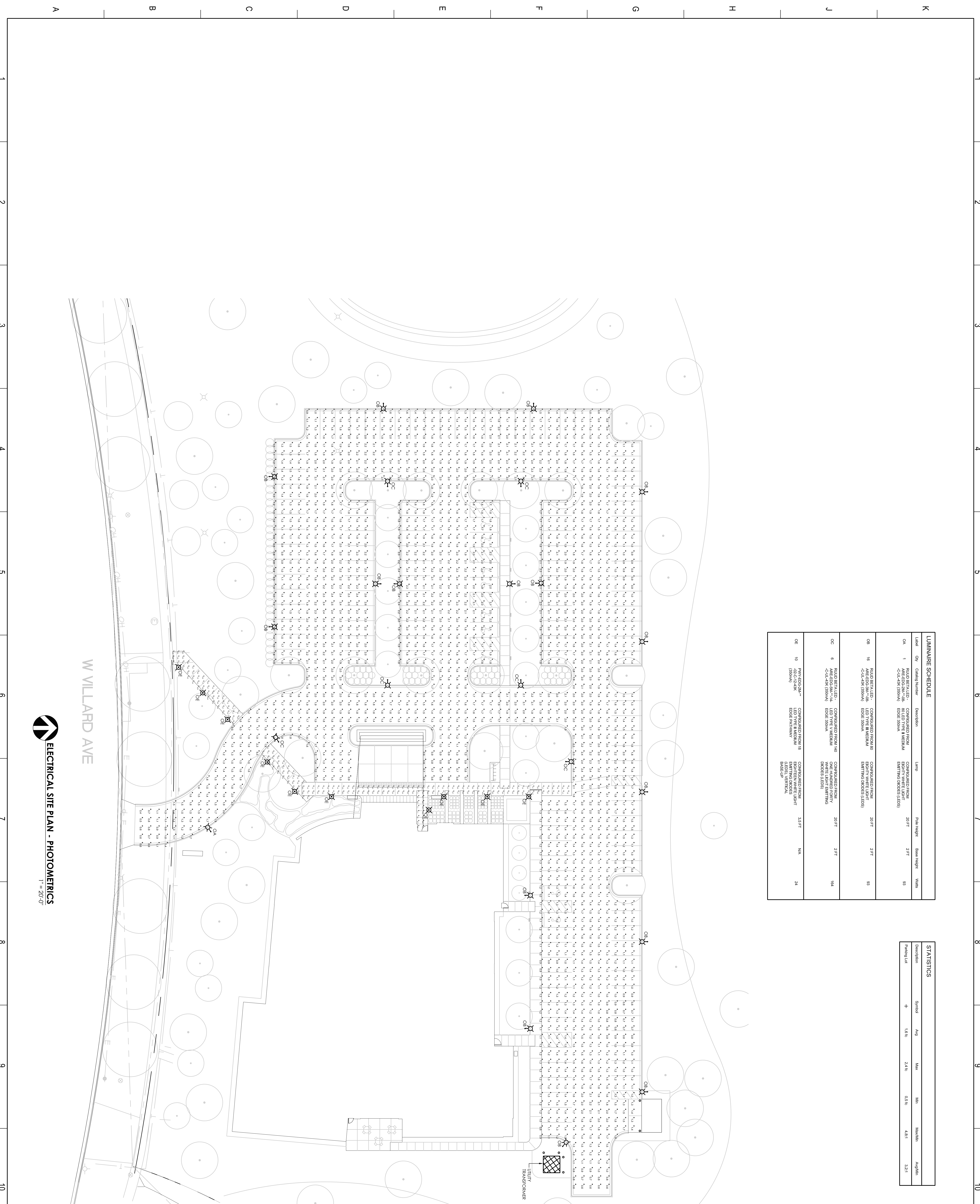
Sheet Title

3D BUILDING IMAGES

Sheet Number	Rev. No.
A-202	

Sheet Number

Rev. No.



Label	Qty	Category Number	Description	Lamp	Room Height	Beam Height	Watts
OA	1	RLUD BETA LED- ABE020A-706	CONFIGURED FROM EIGHT WHITE LED- CUL-DCR (850MA)	80 LED TYPE M MEDIUM EIGHT (8) BUCK (L250)	20 FT	2 FT	93
OB	16	RLUD BETA LED- ABE020A-706	CONFIGURED FROM EIGHT WHITE LED- CUL-DCR (850MA)	80 LED TYPE M MEDIUM EIGHT (8) BUCK (L250)	20 FT	2 FT	93
OC	6	RLUD BETA LED- CUL-DCR (850MA)	CONFIGURED FROM EIGHT WHITE LED- CUL-DCR (850MA)	80 LED TYPE M MEDIUM EIGHT (8) BUCK (L250)	20 FT	2 FT	164
OE	10	PROFESIONALED-DC-CUL-DCR (850MA)	CONFIGURED FROM EIGHT WHITE LED- CUL-DCR (850MA)	80 LED TYPE M MEDIUM EIGHT (8) BUCK (L250)	3.5 FT	N/A	24

STATISTICS						
Description	Symbol	Avg	Max	Min	Max/min	Avg/min
Parking Lot	+	1.6%	24.6%	0.0%	4.8%	3.2%

W WILLARD AVE

ELECTRICAL SITE PLAN - PHOTOMETRICS
1" = 20'-0"

Flad Architects

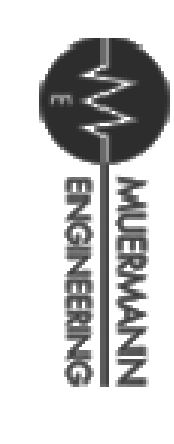
Flad Structural ENGINEERS

The Concord Group
Construction Consultant



ARNOLD & OSHERIDAN
Consulting Engineers

GL
GERBER-LARSON ENGINEERING



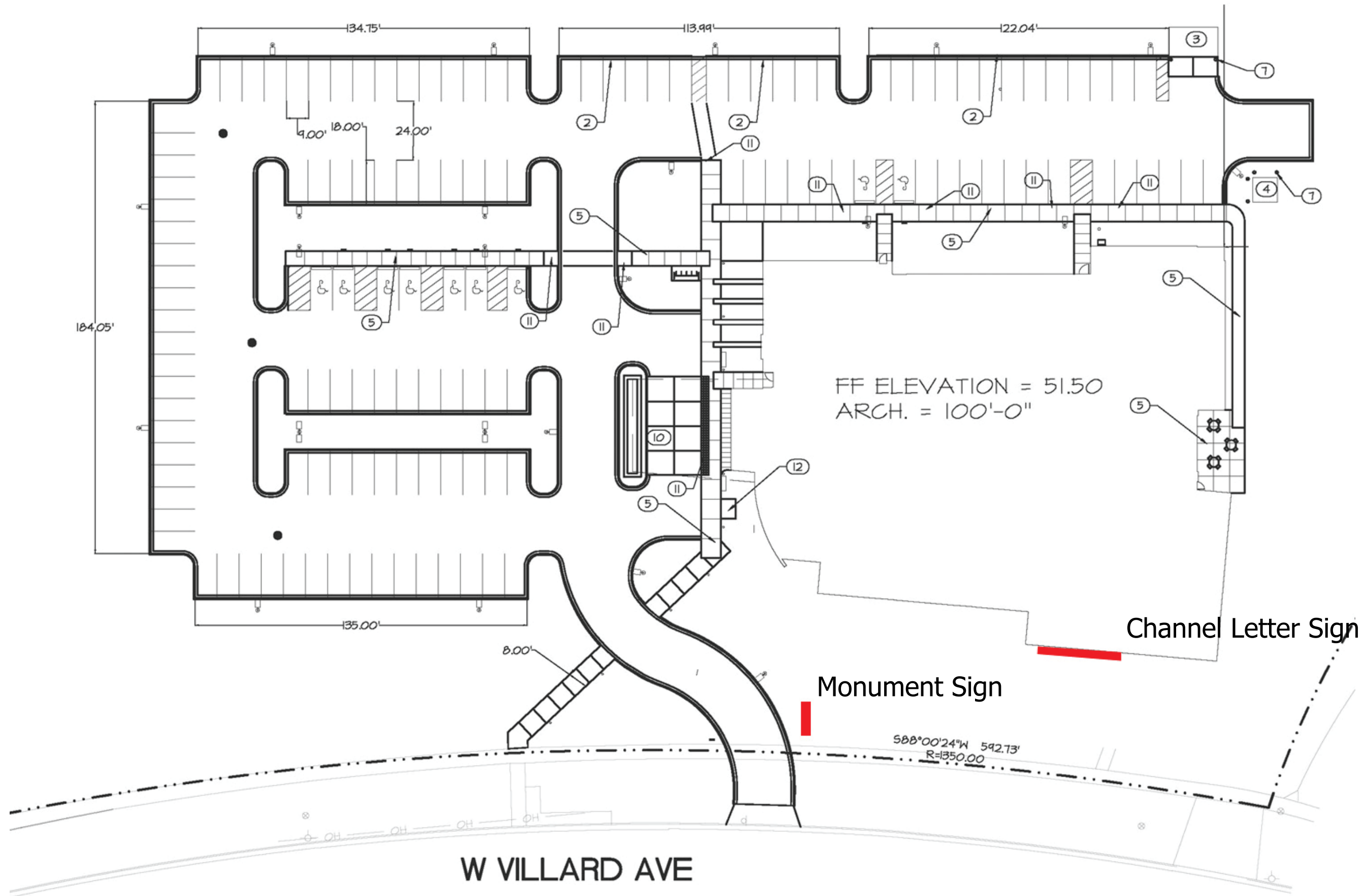
Sheets & Approvals

NOT FOR CONSTRUCTION

Wheaton Franciscan Healthcare
St. Joseph
Family Care Center
A Division of Wheaton Franciscan Healthcare

WHEATON FRANCISCAN HEALTHCARE
2400 W. WILLARD AVE
MILWAUKEE, WI 53209
FAMILY CARE CENTER

Project Phase: DETAILED PLAN DEVELOPMENT
 Date: 05/09/2011
 Drawn By: G+L
 Project Number: 11022-00
 Checked By:
 Sheet Title: ELECTRICAL SITE PLAN - PHOTOMETRICS
 Sheet Number: ES100A



W VILLARD AVE

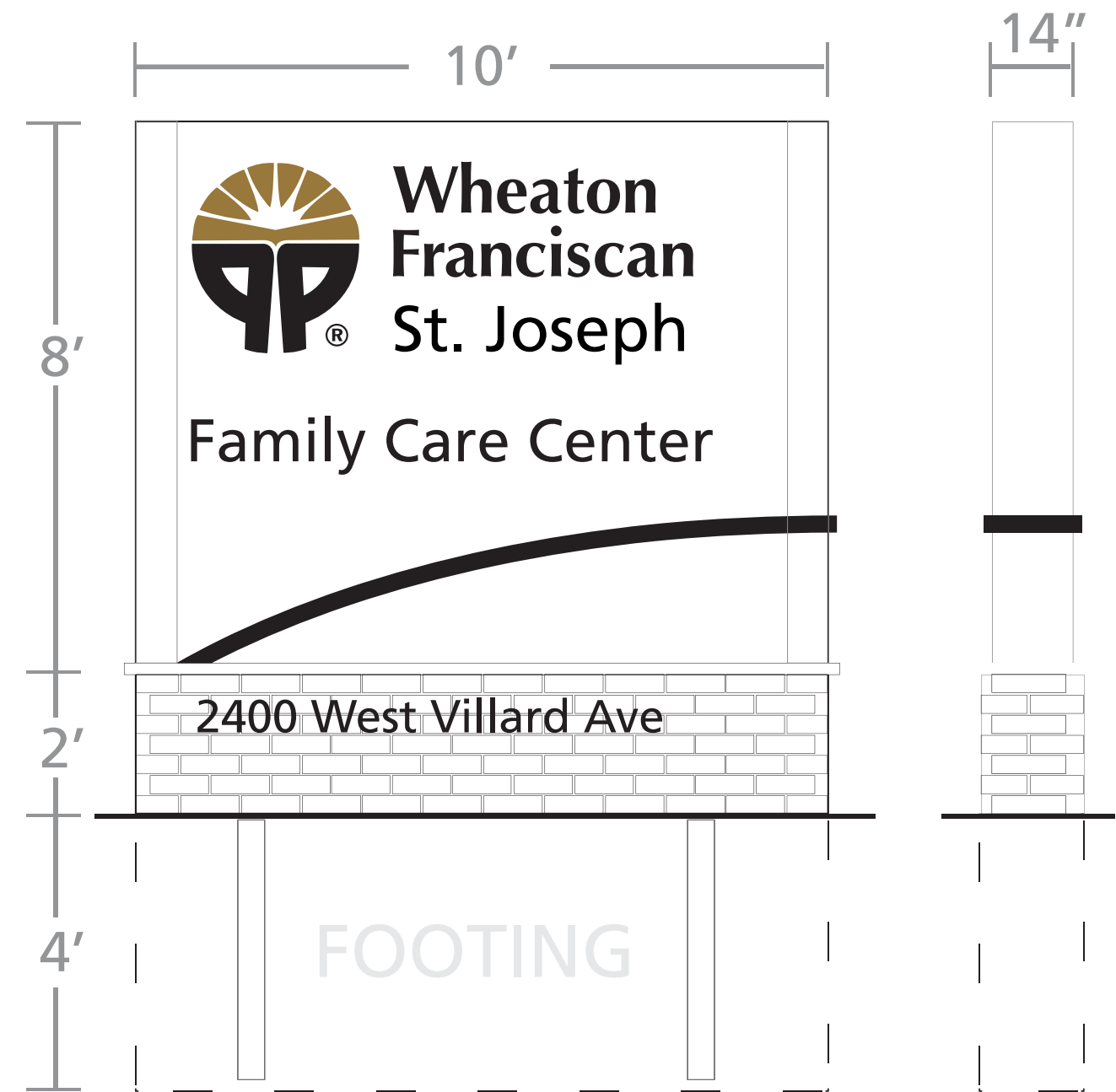
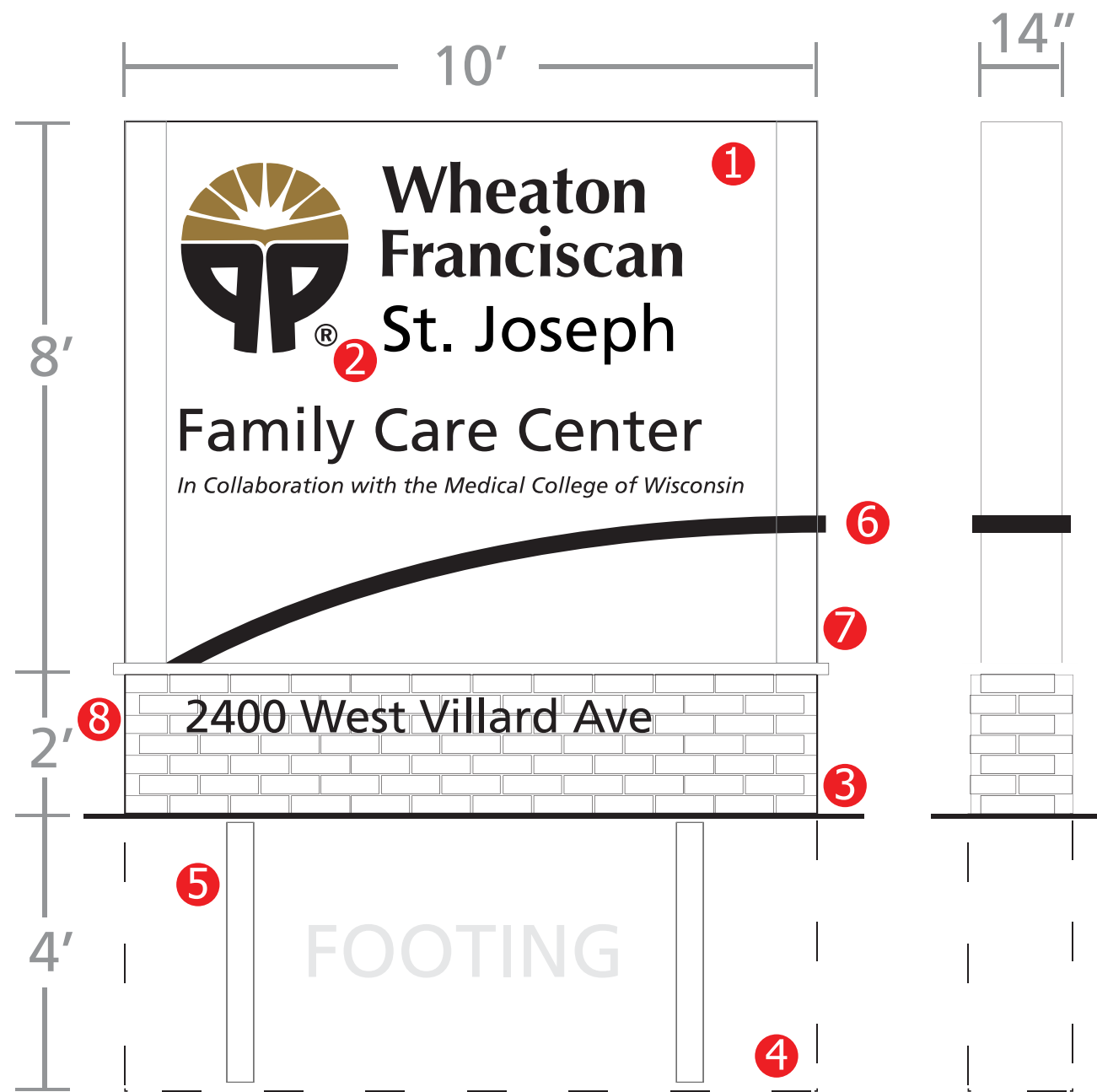
Wheaton Franciscan St. Joseph
 Family Care Center
 Sign Placement

Modifications to signage will not be made without DCD staff approval

Wheaton Franciscan
 St. Joseph
 2400 W. Villard Ave



272 N. 12th Street
 Milwaukee, WI 53233
 414-273-7446
 fax 414-273-7447
 chris@milwaukee-signs.com
 www.milwaukee-signs.com



- ① Internally illuminated aluminum sign cabinet-opaque faces
- ② Push through clear acrylic letters and logo with vinyl faces
- ③ Brick base with trim cap to match building
- ④ Concrete footing
- ⑤ Double pole anchor
- ⑥ Decorative trim detail - removable for service
- ⑦ Rounded side caps - removable for service
- ⑧ Aluminum formed address letters - non illuminated

Modifications to signage will not be made without DCD staff approval

120 volt
photo cell
UL listed
HO florescent bulbs

Wheaton Franciscan
St. Joseph
2400 W. Villard Ave



272 N. 12th Street
Milwaukee, WI 53233
414-273-7446
fax 414-273-7447
chris@milwaukee-signs.com
www.milwaukee-signs.com



Wheaton Franciscan
St. Joseph
Family Care Center
Monument Sign Visual

Wheaton Franciscan
St. Joseph
2400 W. Villard Ave



272 N. 12th Street
Milwaukee, WI 53233
414-273-7446
fax 414-273-7447
chris@milwaukee-signs.com
www.milwaukee-signs.com

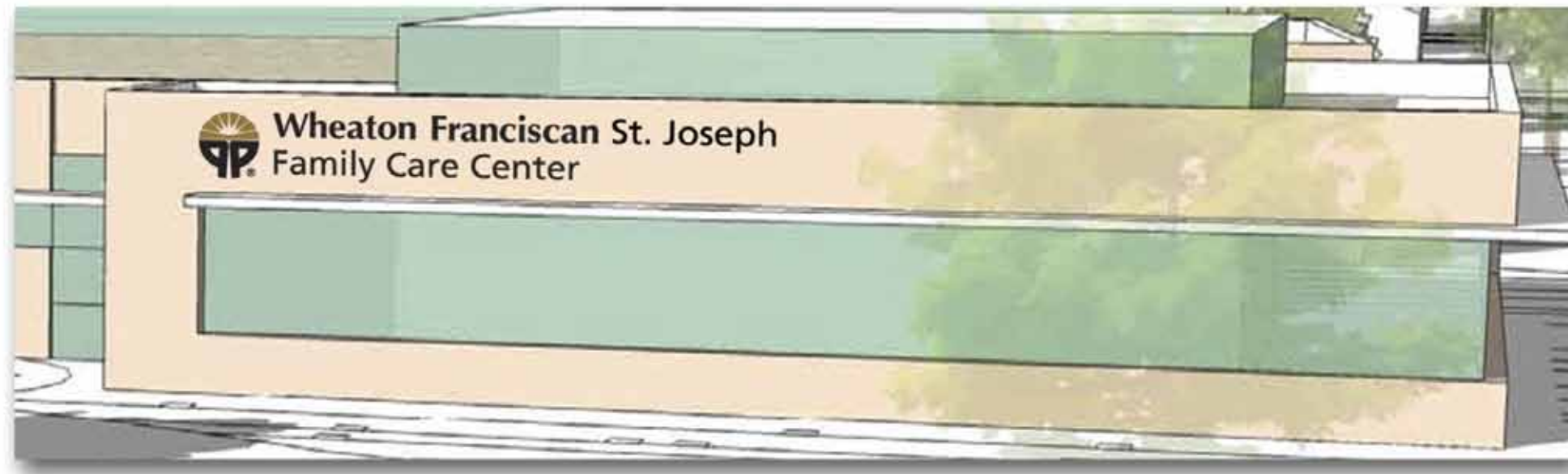
Modifications to signage will not be made without DCD staff approval

77"



Wheaton Franciscan St. Joseph Family Care Center

29.5"



- 1 Painted aluminum returns-Black
- 2 Black trim caps
- 3 LED internal illumination
- 4 Individually mounted letters
- 5 Formed lightbox logo with translucent color vinyl for top
- 6 Day night faces. Day is black, night is white



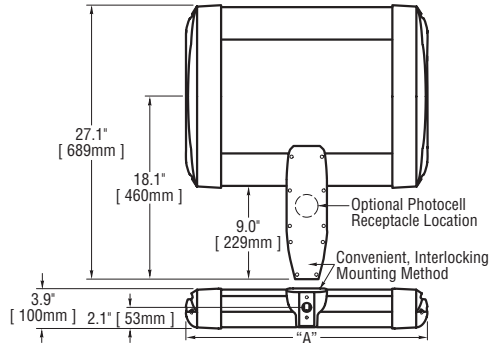
120 volt
photo cell
UL listed
LED Illumination

Wheaton Franciscan
St. Joseph
2400 W. Villard Ave



272 N. 12th Street
Milwaukee, WI 53233
414-273-7446
fax 414-273-7447
chris@milwaukee-signs.com
www.milwaukee-signs.com

Modifications to signage will not be made with DCD staff approval



# of LEDs	Dim. "A"
20	12.06"
40	12.06"
60	14.06"
80	16.06"
100	18.06"
120	20.06"
140	22.06"
160	24.06"
180	26.06"
200	28.06"
220	30.06"
240	32.06"

Notes:

Product	Family	Optic	Mounting	# of LEDs (x 10)	LED Series	Voltage	Color Options	Factory-Installed Options
ARE	EDG	2M ¹ 2MB ²	DA ³	02 04 06 08 10 12 14 16 18 20 22 24	C	UL Universal 120-277V UH Universal 347-480V 12 120V 24 240V 27 277V 34 347V	SV Silver BK Black BZ Bronze PB Platinum Bronze WH White	43K 4300K Color Temperature ⁴ 525 525mA Drive Current ^{5,6} DIM5 0-10V Dimming (525mA maximum) ^{7,8} F Fuse ^{9,10} HL Hi/Low (175/350/525, dual circuit input) ¹¹ P Photocell ^{12,13} R NEMA Photocell Receptacle ¹³ TL Two-Level (175/525 w/ integrated sensor control) ¹¹ TL2 Two-Level (0/350 w/ integrated sensor control) ¹¹ TL3 Two-Level (0/525 w/ integrated sensor control) ¹¹

Footnotes

- IESNA Type II Medium distribution
- IESNA Type II Medium distribution with backlight control
- Direct mounting arm for use with 3-6" square or round pole
- Color temperature per fixture; minimum 70 CRI
- Driver operates at 525mA instead of the standard 350mA providing a higher lumen output and a shorter life
- Available on fixtures with 20-120 LEDs
- Control by others
- Refer to dimming spec sheet for availability and additional information
- When code dictates fusing use time delay fuse
- Not available when UH voltage is selected
- Refer to multi level spec sheet for availability and additional information
- Must specify voltage other than UL or UH
- This option not available with all multi-level options. Refer to multi-level spec sheet for more information

LED PERFORMANCE SPECS

# of LEDs	Initial Delivered Lumens – Type II Medium @ 6000K	Initial Delivered Lumens – Type II Medium w/ Backlight Control @ 6000K			Initial Delivered Lumens – Type II Medium @ 4300K			Initial Delivered Lumens – Type II Medium w/ Backlight Control @ 4300K			System Watts 120-277V	Total Current @ 120V	Total Current @ 230V	Total Current @ 277V	System Watts 347-480V	Total Current @ 347V	Total Current @ 480V	L ₇₀ Hours** @ 25° C (77° F)						
		B	U	G	B	U	G	B	U	G									B	U	G			
350mA (Standard) Fixture Operating at 25° C (77° F)																								
20	1,711 (02)	1	1	1	1,278 (02)	0	1	1	1,500 (02)	1	1	1	1,121 (02)	0	1	1	25	0.23	0.11	0.10	30	0.09	0.08	105,000
40	3,421 (04)	1	1	1	2,556 (04)	0	1	1	3,001 (04)	1	1	1	2,242 (04)	0	1	1	49	0.41	0.23	0.20	51	0.15	0.12	105,000
60	5,132 (06)	2	2	1	3,833 (06)	1	1	1	4,501 (06)	1	1	1	3,362 (06)	1	1	1	71	0.60	0.32	0.28	74	0.22	0.17	105,000
80	6,842 (08)	2	2	2	5,111 (08)	1	2	1	6,002 (08)	2	2	2	4,483 (08)	1	2	1	93	0.78	0.41	0.35	96	0.28	0.21	105,000
100	8,553 (10)	2	2	2	6,389 (10)	1	2	2	7,502 (10)	2	2	2	5,604 (10)	1	2	1	116	0.98	0.52	0.43	119	0.35	0.26	105,000
120	10,263 (12)	2	3	2	7,667 (12)	1	2	2	9,002 (12)	2	2	2	6,725 (12)	1	2	2	139	1.17	0.61	0.52	141	0.41	0.30	105,000
140	11,974 (14)	3	3	3	8,944 (14)	1	3	2	10,503 (14)	2	3	2	7,845 (14)	1	3	2	164	1.39	0.74	0.63	170	0.49	0.35	105,000
160	13,685 (16)	3	3	3	10,222 (16)	1	3	2	12,003 (16)	3	3	3	8,966 (16)	1	3	2	186	1.58	0.83	0.71	192	0.55	0.40	105,000
180	15,395 (18)	3	3	3	11,500 (18)	1	3	2	13,503 (18)	3	3	3	10,087 (18)	1	3	2	211	1.77	0.93	0.79	215	0.62	0.45	105,000
200	17,106 (20)	3	3	3	12,778 (20)	1	3	2	15,004 (20)	3	3	3	11,208 (20)	1	3	2	233	1.97	1.03	0.87	237	0.68	0.49	105,000
220	18,816 (22)	3	3	3	14,056 (22)	2	3	2	16,504 (22)	3	3	3	12,328 (22)	1	3	2	256	2.16	1.13	0.95	259	0.75	0.54	105,000
240	20,527 (24)	3	3	3	15,333 (24)	2	3	2	18,005 (24)	3	3	3	13,449 (24)	1	3	2	279	2.35	1.23	1.03	282	0.81	0.59	105,000
525mA Fixture Operating at 25° C (77° F)																								
20	2,224 (02)	1	1	1	1,661 (02)	0	1	1	1,950 (02)	1	1	1	1,457 (02)	0	1	1	37	0.31	0.18	0.17	43	0.13	0.15	61,000
40	4,448 (04)	1	1	1	3,322 (04)	1	1	1	3,901 (04)	1	1	1	2,914 (04)	0	1	1	69	0.58	0.31	0.27	75	0.22	0.19	61,000
60	6,671 (06)	2	2	2	4,983 (06)	1	2	1	5,851 (06)	2	2	2	4,371 (06)	1	2	1	110	0.92	0.49	0.41	116	0.33	0.27	61,000
80	8,895 (08)	2	2	2	6,644 (08)	1	2	2	7,802 (08)	2	2	2	5,828 (08)	1	2	2	138	1.16	0.62	0.54	145	0.42	0.32	61,000
100	11,119 (10)	3	3	3	8,306 (10)	1	3	2	9,752 (10)	2	2	2	7,285 (10)	1	2	2	177	1.49	0.79	0.68	186	0.53	0.40	61,000
120	13,343 (12)	3	3	3	9,967 (12)	1	3	2	11,703 (12)	3	3	3	8,742 (12)	1	3	2	217	1.82	0.96	0.81	226	0.65	0.48	61,000

* Utilizes magnetic step-down transformer when 525mA drive current or multi-level options are selected ** For recommended lumen depreciation data see TD-13 *** For more information on the IES BUG (Backlight-Uplight-Glare) Rating visit www.iesna.org/PDF/Erratas/TM-15-07BugRatingsAddendum.pdf

NOTE: All data subject to change without notice.

© 2010 BetaLED®, a division of Ruud Lighting • 1200 92nd Street • Sturtevant, WI 53177 • 800-236-6800 • www.betaLED.com



Made in the U.S.A. of U.S. and imported parts.
Meets Buy American requirements within the ARRA.



General Description

Slim, low profile design minimizes wind load requirements. Fixture sides are rugged cast aluminum with integral, weather-tight LED driver compartments and high performance aluminum heatsinks. Convenient, interlocking mounting method. Mounting housing is rugged die cast aluminum and mounts to 3 – 6" square or round pole. Fixture is secured by two (2) 5/16-18 UNC bolts spaced on 2" centers. Includes leaf/debris guard. Five year limited warranty on fixture.

Electrical

Modular design accommodates varied lighting output from high power, white, 6000K (+/- 500K per full fixture), minimum 70 CRI, long life LED sources. 120–277V 50/60 Hz, Class 1 LED drivers are standard. 347–480V 50/60 Hz driver is optional. LED drivers have power factor >90% and THD <20% of full load. Units provided with integral 10kV surge suppression protection standard. Integral weather-tight electrical box with terminal strips (12Ga - 20Ga) for easy power hook-up. Surge protection tested in accordance with IEEE C62.41.2 and ANSI standard 62.41.2.

Testing & Compliance

UL listed in the U.S. and Canada for wet locations and enclosure classified IP66 per IEC 529 when ordered without P or R options. Consult factory for CE Certified products. RoHS compliant. International Dark-Sky Association approved.

Finish

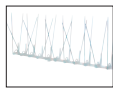
Exclusive Colorfast DeltaGuard® finish features an E-Coat epoxy primer with an ultra-durable silver powder topcoat, providing excellent resistance to corrosion, ultraviolet degradation and abrasion. Bronze, black, white and platinum bronze powder topcoats are also available. The finish is covered by our 10 year limited warranty.

Fixture and finish are endurance tested to withstand 5,000 hours of elevated ambient salt fog conditions as defined in ASTM Standard B 117.

Patents

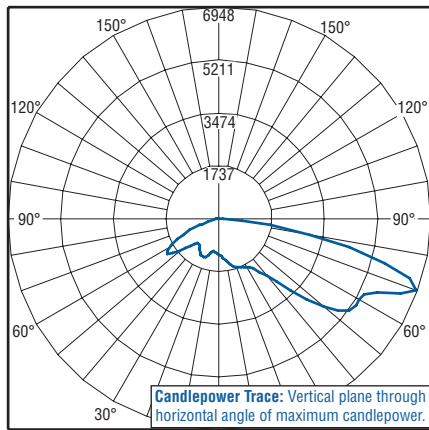
U.S. and international patents granted and pending. BetaLED is a division of Ruud Lighting, Inc. For a listing of Ruud Lighting, Inc. patents, visit www.uspto.gov.

Field-Installed Accessories

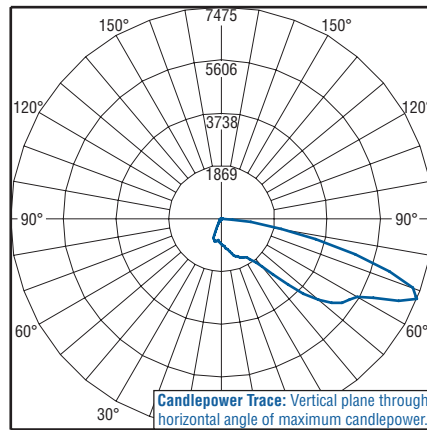


Bird Spikes
XA-BRDSPK

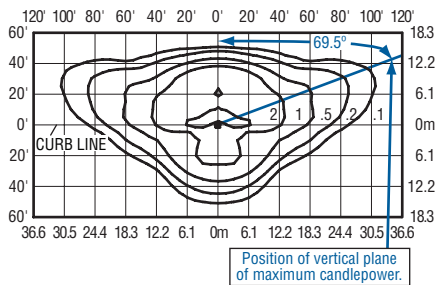
Photometrics



Independent Testing Laboratories certified test. Report No. ITL63821. Candlepower trace of 6000K, 120 LED Type II Medium area luminaire with 10,355 initial delivered lumens operating at 350mA. All published luminaire photometric testing performed to IESNA LM-79-08 standards.



Independent Testing Laboratories certified test. Report No. ITL64423. Candlepower trace of 6000K, 120 LED Type II Medium area luminaire with backlight control and 7,710 initial delivered lumens operating at 350mA. All published luminaire photometric testing performed to IESNA LM-79-08 standards.



Isofootcandle plot of 6000K, 120 LED Type II Medium area luminaire at 25' A.F.G. Luminaire with 10,263 initial delivered lumens operating at 350mA. Initial FC at grade.

THE EDGE® EPA & Weight Calculations

# of LEDs	Approximate		Single	2@ 180°	2@ 90°	3@ 90°	4@ 90°
	Weight	120-277V ¹					
			■	■-■	■-■	■-■	■-■
Fixed Arm Mount							
20	21.0 lbs.		0.60	1.20	0.87	1.47	1.75
40	23.7 lbs.		0.60	1.20	0.87	1.47	1.75
60	27.0 lbs.		0.60	1.20	0.92	1.51	1.83
80	28.1 lbs.		0.60	1.20	0.96	1.55	1.91
100	32.3 lbs.		0.60	1.20	1.00	1.60	2.00
120	33.5 lbs.		0.60	1.20	1.04	1.64	2.08
140	36.9 lbs.		0.60	1.20	1.08	1.68	2.16
160	41.4 lbs.		0.60	1.20	1.12	1.72	2.24
180	42.1 lbs.		0.60	1.20	n/a ²	n/a ²	n/a ²
200	43.3 lbs.		0.61	1.21	n/a ²	n/a ²	n/a ²
220	46.6 lbs.		0.65	1.29	n/a ²	n/a ²	n/a ²
240	47.8 lbs.		0.69	1.38	n/a ²	n/a ²	n/a ²

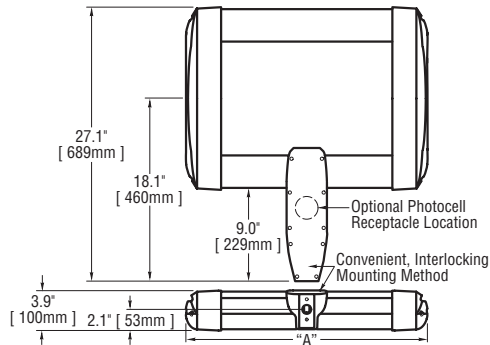
- Add 5 lbs. for transformer in 347–480V fixtures when 525mA drive current or multi-level options are selected
- For applications requiring 180 or more LEDs at 90 degrees refer to the DL mount version of our spec sheet.

NOTE: All data subject to change without notice.

© 2010 BetaLED®, a division of Ruud Lighting • 1200 92nd Street • Sturtevant, WI 53177 • 800-236-6800 • www.betaLED.com

Made in the U.S.A. of U.S. and imported parts.
Meets Buy American requirements within the ARRA.





# of LEDs	Dim. "A"
20	12.06"
40	12.06"
60	14.06"
80	16.06"
100	18.06"
120	20.06"
140	22.06"
160	24.06"
180	26.06"
200	28.06"
220	30.06"
240	32.06"

Notes:

Product	Family	Optic	Mounting	# of LEDs (x 10)	LED Series	Voltage	Color Options	Factory-Installed Options
ARE	EDG	3M ¹ 3MB ²	DA ³	02 04 06 08 10 12 14 16 18 20 22 24	C	UL Universal 120-277V UH Universal 347-480V 12 24 240V 27 277V 34 347V	SV Silver BK Black BZ Bronze PB Platinum Bronze WH White	43K 4300K Color Temperature ⁴ 525 525mA Drive Current ^{5,6} DIM5 0-10V Dimming (525mA maximum) ^{7,8} F Fuse ^{9,10} HL Hi/Low (175/350/525, dual circuit input) ¹¹ P Photocell ^{12,13} R NEMA Photocell Receptacle ¹³ TL Two-Level (175/525 w/ integrated sensor control) ¹¹ TL2 Two-Level (0/350 w/ integrated sensor control) ¹¹ TL3 Two-Level (0/525 w/ integrated sensor control) ¹¹

Footnotes

- IESNA Type III Medium distribution
- IESNA Type III Medium distribution with backlight control
- Direct mounting arm for use with 3-6" square or round pole
- Color temperature per fixture; minimum 70 CRI
- Driver operates at 525mA instead of the standard 350mA providing a higher lumen output and a shorter life
- Available on fixtures with 20-120 LEDs
- Control by others
- Refer to dimming spec sheet for availability and additional information
- When code dictates fusing use time delay fuse
- Not available when UH voltage is selected
- Refer to multi-level spec sheet for availability and additional information
- Must specify voltage other than UL or UH
- This option not available with all multi-level options. Refer to multi-level spec sheet for more information

LED PERFORMANCE SPECS

# of LEDs	Initial Delivered Lumens – Type III Medium @ 6000K			Initial Delivered Lumens – Type III Medium w/ Backlight Control @ 6000K			Initial Delivered Lumens – Type III Medium @ 4300K			Initial Delivered Lumens – Type III Medium w/ Backlight Control @ 4300K			System Watts 120-277V	Total Current @ 120V	Total Current @ 230V	Total Current @ 277V	System Watts 347-480V	Total Current @ 347V	Total Current @ 480V	L ₇₀ Hours** @ 25° C (77° F)				
	B	U	G	B	U	G	B	U	G	B	U	G									Rating***	Rating***	Rating***	Rating***
350mA (Standard) Fixture Operating at 25° C (77° F)																								
20	1,649 (02)	1	1	1	1,237 (02)	0	1	1	1,446 (02)	1	1	1	1,085 (02)	0	1	1	25	0.23	0.11	0.10	30	0.09	0.08	105,000
40	3,298 (04)	1	1	1	2,473 (04)	0	1	1	2,892 (04)	1	1	1	2,169 (04)	0	1	1	49	0.41	0.23	0.20	51	0.15	0.12	105,000
60	4,946 (06)	2	2	2	3,710 (06)	0	1	1	4,338 (06)	2	2	2	3,254 (06)	0	1	1	71	0.60	0.32	0.28	74	0.22	0.17	105,000
80	6,595 (08)	2	2	2	4,946 (08)	1	2	2	5,785 (08)	2	2	2	4,338 (08)	1	2	1	93	0.78	0.41	0.35	96	0.28	0.21	105,000
100	8,244 (10)	3	3	3	6,183 (10)	1	3	2	7,231 (10)	2	2	2	5,423 (10)	1	2	2	116	0.98	0.52	0.43	119	0.35	0.26	105,000
120	9,893 (12)	3	3	3	7,419 (12)	1	3	2	8,677 (12)	3	3	3	6,508 (12)	1	3	2	139	1.17	0.61	0.52	141	0.41	0.30	105,000
140	11,541 (14)	3	3	3	8,656 (14)	1	3	2	10,123 (14)	3	3	3	7,592 (14)	1	3	2	164	1.39	0.74	0.63	170	0.49	0.35	105,000
160	13,190 (16)	3	3	3	9,893 (16)	1	3	2	11,569 (16)	3	3	3	8,677 (16)	1	3	2	186	1.58	0.83	0.71	192	0.55	0.40	105,000
180	14,839 (18)	3	3	3	11,129 (18)	1	3	2	13,015 (18)	3	3	3	9,762 (18)	1	3	2	211	1.77	0.93	0.79	215	0.62	0.45	105,000
200	16,488 (20)	3	3	3	12,366 (20)	2	3	2	14,462 (20)	3	3	3	10,846 (20)	1	3	2	233	1.97	1.03	0.87	237	0.68	0.49	105,000
220	18,136 (22)	3	3	3	13,602 (22)	2	3	2	15,908 (22)	3	3	3	11,931 (22)	1	3	2	256	2.16	1.13	0.95	259	0.75	0.54	105,000
240	19,785 (24)	3	3	3	14,839 (24)	2	3	3	17,354 (24)	3	3	3	13,015 (24)	2	3	2	279	2.35	1.23	1.03	282	0.81	0.59	105,000
525mA Fixture Operating at 25° C (77° F)																								
20	2,143 (02)	1	1	1	1,608 (02)	0	1	1	1,880 (02)	1	1	1	1,410 (02)	0	1	1	37	0.31	0.18	0.17	43	0.13	0.15	61,000
40	4,287 (04)	2	2	2	3,215 (04)	0	1	1	3,760 (04)	1	1	1	2,820 (04)	0	1	1	69	0.58	0.31	0.27	75	0.22	0.19	61,000
60	6,430 (06)	2	2	2	4,823 (06)	1	2	2	5,640 (06)	2	2	2	4,230 (06)	1	2	1	110	0.92	0.49	0.41	116	0.33	0.27	61,000
80	8,574 (08)	3	3	3	6,430 (08)	1	3	2	7,520 (08)	2	2	2	5,640 (08)	1	2	2	138	1.16	0.62	0.54	145	0.42	0.32	61,000
100	10,717 (10)	3	3	3	8,038 (10)	1	3	2	9,400 (10)	3	3	3	7,050 (10)	1	3	2	177	1.49	0.79	0.68	186	0.53	0.40	61,000
120	12,860 (12)	3	3	3	9,645 (12)	1	3	2	11,280 (12)	3	3	3	8,460 (12)	1	3	2	217	1.82	0.96	0.81	226	0.65	0.48	61,000

* Utilizes magnetic step-down transformer when 525mA drive current or multi-level options are selected

** For recommended lumen depreciation data see TD-13

*** For more information on the IES BUG (Backlight-Uplight-Glare) Rating visit www.iesna.org/PDF/Erratas/TM-15-07BugRatingsAddendum.pdf

NOTE: All data subject to change without notice.

© 2010 BetaLED®, a division of Ruud Lighting • 1200 92nd Street • Sturtevant, WI 53177 • 800-236-6800 • www.betaLED.com



Made in the U.S.A. of U.S. and imported parts.
Meets Buy American requirements within the ARRA.



General Description

Slim, low profile design minimizes wind load requirements. Fixture sides are rugged cast aluminum with integral, weather-tight LED driver compartments and high performance aluminum heatsinks. Convenient, interlocking mounting method. Mounting housing is rugged die cast aluminum and mounts to 3 – 6" square or round pole. Fixture is secured by two (2) 5/16-18 UNC bolts spaced on 2" centers. Includes leaf/debris guard. Five year limited warranty on fixture.

Electrical

Modular design accommodates varied lighting output from high power, white, 6000K (+/- 500K per full fixture), minimum 70 CRI, long life LED sources. 120–277V 50/60 Hz, Class 1 LED drivers are standard. 347–480V 50/60 Hz driver is optional. LED drivers have power factor >90% and THD <20% of full load. Units provided with integral 10kV surge suppression protection standard. Integral weather-tight electrical box with terminal strip for easy power hook-up. Surge protection tested in accordance with IEEE C62.41.2 and ANSI standard 62.41.2.

Testing & Compliance

UL listed in the U.S. and Canada for wet locations and enclosure classified IP66 per IEC 529 when ordered without P or R options. Consult factory for CE Certified products. RoHS compliant. International Dark-Sky Association approved.

Finish

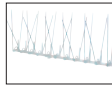
Exclusive Colorfast DeltaGuard® finish features an E-Coat epoxy primer with an ultra-durable silver powder topcoat, providing excellent resistance to corrosion, ultraviolet degradation and abrasion. Bronze, black, white and platinum bronze powder topcoats are also available. The finish is covered by our 10 year limited warranty.

Fixture and finish are endurance tested to withstand 5,000 hours of elevated ambient salt fog conditions as defined in ASTM Standard B 117.

Patents

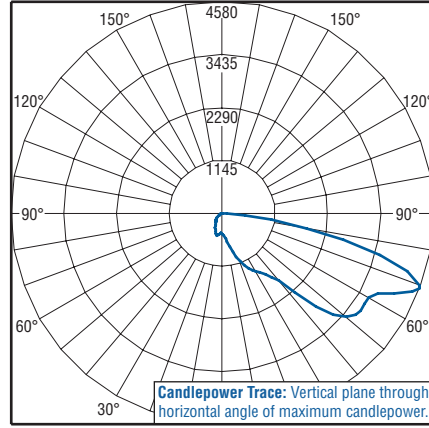
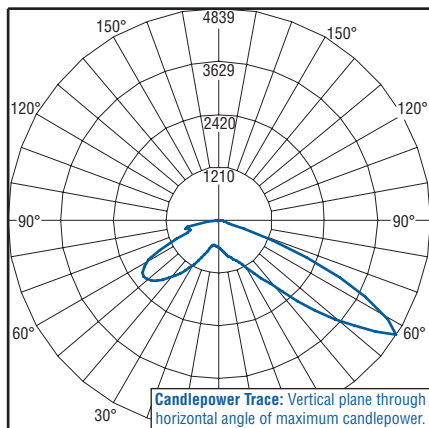
U.S. and international patents granted and pending. BetaLED is a division of Ruud Lighting, Inc. For a listing of Ruud Lighting, Inc. patents, visit www.uspto.gov.

Field-Installed Accessories



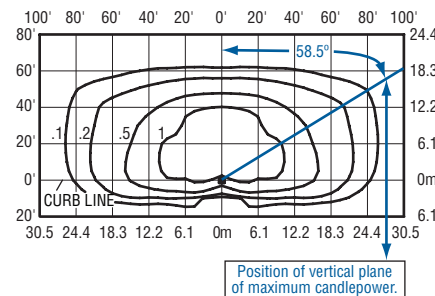
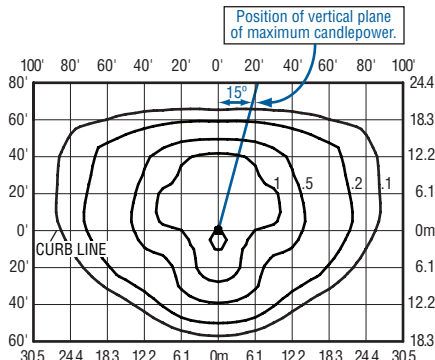
Bird Spikes
XA-BRDSPK

Photometrics



Independent Testing Laboratories certified test. Report No. ITL63574. Candlepower trace of 6000K, 120 LED Type III Medium area luminaire with 9,914 initial delivered lumens operating at 350mA. **All published luminaire photometric testing performed to IESNA LM-79-08 standards.**

Independent Testing Laboratories certified test. Report No. ITL64565. Candlepower trace of 6000K, 120 LED Type III Medium area luminaire with backlight control and 7,023 initial delivered lumens operating at 350mA. **All published luminaire photometric testing performed to IESNA LM-79-08 standards.**



Isofootcandle plot of 6000K, 120 LED Type III Medium area luminaire at 25' A.F.G. Luminaire with 9,893 initial delivered lumens operating at 350mA. Initial FC at grade.

Isofootcandle plot of 6000K, 120 LED Type III Medium area luminaire with backlight control at 25' A.F.G. Luminaire with 7,419 initial delivered lumens operating at 350mA. Initial FC at grade.

THE EDGE® EPA & Weight Calculations

# of LEDs	Approximate		Single	2@ 180°	2@ 90°	3@ 90°	4@ 90°
	Weight	120-277V ¹					
Fixed Arm Mount							
20	21.0 lbs.	0.60	1.20	0.87	1.47	1.75	
40	23.7 lbs.	0.60	1.20	0.87	1.47	1.75	
60	27.0 lbs.	0.60	1.20	0.92	1.51	1.83	
80	28.1 lbs.	0.60	1.20	0.96	1.55	1.91	
100	32.3 lbs.	0.60	1.20	1.00	1.60	2.00	
120	33.5 lbs.	0.60	1.20	1.04	1.64	2.08	
140	36.9 lbs.	0.60	1.20	1.08	1.68	2.16	
160	41.4 lbs.	0.60	1.20	1.12	1.72	2.24	
180	42.1 lbs.	0.60	1.20	n/a ²	n/a ²	n/a ²	
200	43.3 lbs.	0.61	1.21	n/a ²	n/a ²	n/a ²	
220	46.6 lbs.	0.65	1.29	n/a ²	n/a ²	n/a ²	
240	47.8 lbs.	0.69	1.38	n/a ²	n/a ²	n/a ²	

1. Add 5 lbs. for transformer in 347-480V fixtures when 525mA drive current or multi-level options are selected
2. For applications requiring 180 or more LEDs at 90 degrees refer to the DL mount version of our spec sheet.

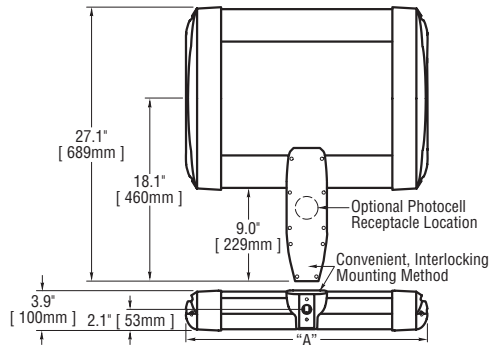


© 2010 BetaLED®, a division of Ruud Lighting • 1200 92nd Street • Sturtevant, WI 53177 • 800-236-6800 • www.betaLED.com



Made in the U.S.A. of U.S. and imported parts.
Meets Buy American requirements within the ARRA.

NOTE: All data subject to change without notice.



# of LEDs	Dim. "A"
20	12.06"
40	12.06"
60	14.06"
80	16.06"
100	18.06"
120	20.06"
140	22.06"
160	24.06"
180	26.06"
200	28.06"
220	30.06"
240	32.06"

Notes:

Product	Family	Optic	Mounting	# of LEDs (x 10)	LED Series	Voltage	Color Options	Factory-Installed Options
ARE	EDG	5M ¹	DA ²	02	C	UL	SV	43K 4300K Color Temperature ³
				04		Universal	Silver	525 525mA Drive Current ^{4,5}
				06		120-277V	BK	DIM5 0-10V Dimming (525mA maximum) ^{6,7}
				08			Black	F Fuse ^{8,9}
				10		Universal	BZ	HL Hi/Low (175/350/525, dual circuit input) ¹⁰
				12		347-480V	Bronze	P Photocell ^{11,12}
				14		12	PB	R NEMA Photocell Receptacle ¹²
				16		120V	Platinum	TL Two-Level (175/525 w/ integrated sensor control) ¹⁰
				18		24	Bronze	TL2 Two-Level (0/350 w/ integrated sensor control) ¹⁰
				20		240V	WH	TL3 Two-Level (0/525 w/ integrated sensor control) ¹⁰
				22		27	White	
				24		277V		
						34		
						347V		

Footnotes

1. IESNA Type V Medium distribution
2. Direct mounting arm for use with 3-6" square or round pole
3. Color temperature per fixture; minimum 70 CRI
4. Driver operates at 525mA instead of the standard 350mA providing a higher lumen output and a shorter life
5. Available on fixtures with 20-120 LEDs
6. Control by others
7. Refer to dimming spec sheet for availability and additional information
8. When code dictates fusing use time delay fuse
9. Not available when UH voltage is selected
10. Refer to multi-level spec sheet for availability and additional information
11. Must specify voltage other than UL or UH
12. This option not available with all multi-level options. Refer to multi-level spec sheet for more information

LED PERFORMANCE SPECS

# of LEDs	Initial Delivered Lumens – Type V Medium @ 6000K	B U G			Initial Delivered Lumens – Type V Medium @ 4300K	B U G			System Watts 120-277V	Total Current @ 120V	Total Current @ 230V	Total Current @ 277V	System Watts 347-480V*	Total Current @ 347V	Total Current @ 480V	L ₇₀ Hours** @ 25° C (77° F)
		Rating***				Rating***										
350mA (Standard) Fixture Operating at 25° C (77° F)																
20	1,793 (02)	1	1	1	1,573 (02)	1	1	1	25	0.23	0.11	0.10	30	0.09	0.08	105,000
40	3,586 (04)	2	1	1	3,145 (04)	2	1	1	49	0.41	0.23	0.20	51	0.15	0.12	105,000
60	5,379 (06)	3	1	1	4,718 (06)	3	1	1	71	0.60	0.32	0.28	74	0.22	0.17	105,000
80	7,172 (08)	3	1	2	6,291 (08)	3	1	1	93	0.78	0.41	0.35	96	0.28	0.21	105,000
100	8,965 (10)	3	2	2	7,863 (10)	3	2	2	116	0.98	0.52	0.43	119	0.35	0.26	105,000
120	10,758 (12)	4	2	2	9,436 (12)	4	2	2	139	1.17	0.61	0.52	141	0.41	0.30	105,000
140	12,551 (14)	4	2	2	11,009 (14)	4	2	2	164	1.39	0.74	0.63	170	0.49	0.35	105,000
160	14,344 (16)	4	2	2	12,582 (16)	4	2	2	186	1.58	0.83	0.71	192	0.55	0.40	105,000
180	16,137 (18)	4	3	2	14,154 (18)	4	2	2	211	1.77	0.93	0.79	215	0.62	0.45	105,000
200	17,930 (20)	4	3	2	15,727 (20)	4	3	2	233	1.97	1.03	0.87	237	0.68	0.49	105,000
220	19,723 (22)	5	3	3	17,300 (22)	4	3	2	256	2.16	1.13	0.95	259	0.75	0.54	105,000
240	21,516 (24)	5	3	3	18,872 (24)	5	3	3	279	2.35	1.23	1.03	282	0.81	0.59	105,000
525mA Fixture Operating at 25° C (77° F)																
20	2,331 (02)	2	1	1	2,044 (02)	2	1	1	37	0.31	0.18	0.17	43	0.13	0.15	61,000
40	4,662 (04)	3	1	1	4,089 (04)	3	1	1	69	0.58	0.31	0.27	75	0.22	0.19	61,000
60	6,993 (06)	3	1	2	6,133 (06)	3	1	1	110	0.92	0.49	0.41	116	0.33	0.27	61,000
80	9,324 (08)	4	2	2	8,178 (08)	3	2	2	138	1.16	0.62	0.54	145	0.42	0.32	61,000
100	11,655 (10)	4	2	2	10,222 (10)	4	2	2	177	1.49	0.79	0.68	186	0.53	0.40	61,000
120	13,986 (12)	4	2	2	12,267 (12)	4	2	2	217	1.82	0.96	0.81	226	0.65	0.48	61,000

* Utilizes magnetic step-down transformer when 525mA drive current or multi-level options are selected
 ** For recommended lumen depreciation data see TD-13
 *** For more information on the IES BUG (Backlight-Uplight-Glare) Rating visit www.iesna.org/PDF/Erratas/TM-15-07BugRatingsAddendum.pdf

NOTE: All data subject to change without notice.

© 2010 BetaLED®, a division of Ruud Lighting • 1200 92nd Street • Sturtevant, WI 53177 • 800-236-6800 • www.betaLED.com



Made in the U.S.A. of U.S. and imported parts.
 Meets Buy American requirements within the ARRA.



General Description

Slim, low profile design minimizes wind load requirements. Fixture sides are rugged cast aluminum with integral, weather-tight LED driver compartments and high performance aluminum heatsinks. Convenient, interlocking mounting method. Mounting housing is rugged die cast aluminum and mounts to 3 – 6” square or round pole. Fixture is secured by two (2) 5/16-18 UNC bolts spaced on 2” centers. Includes leaf/debris guard. Five year limited warranty on fixture.

Electrical

Modular design accommodates varied lighting output from high power, white, 6000K (+/- 500K per full fixture), minimum 70 CRI, long life LED sources. 120–277V 50/60 Hz, Class 1 LED drivers are standard. 347–480V 50/60 Hz driver is optional. LED drivers have power factor >90% and THD <20% of full load. Units provided with integral 10kV surge suppression protection standard. Integral weather-tight electrical box with terminal strip for easy power hook-up. Surge protection tested in accordance with IEEE C62.41.2 and ANSI standard 62.41.2.

Testing & Compliance

UL listed in the U.S. and Canada for wet locations and enclosure classified IP66 per IEC 529 when ordered without P or R options. Consult factory for CE Certified products. RoHS compliant. International Dark-Sky Association approved.

Finish

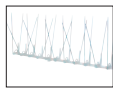
Exclusive Colorfast DeltaGuard® finish features an E-Coat epoxy primer with an ultra-durable silver powder topcoat, providing excellent resistance to corrosion, ultraviolet degradation and abrasion. Bronze, black, white and platinum bronze powder topcoats are also available. The finish is covered by our 10 year limited warranty.

Fixture and finish are endurance tested to withstand 5,000 hours of elevated ambient salt fog conditions as defined in ASTM Standard B 117.

Patents

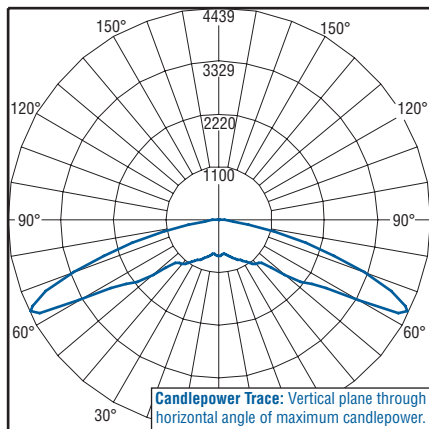
U.S. and international patents granted and pending. BetaLED is a division of Ruud Lighting, Inc. For a listing of Ruud Lighting, Inc. patents, visit www.uspto.gov.

Field-Installed Accessories

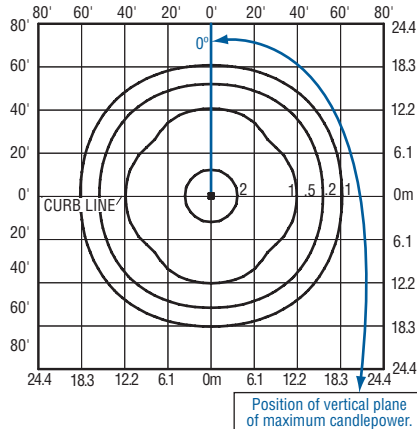


Bird Spikes
XA-BRDSPK

Photometrics



Candlepower Trace: Vertical plane through horizontal angle of maximum candlepower.



Position of vertical plane of maximum candlepower.

Isofootcandle plot of 6000K, 120 LED Type V Medium area luminaire at 25' A.F.G. Luminaire with 10,758 initial delivered lumens operating at 350mA. Initial FC at grade.

Independent Testing Laboratories certified test. Report No. ITL63746. Candlepower trace of 6000K, 120 LED Type V Medium area luminaire with 11,013 initial delivered lumens operating at 350mA. All published luminaire photometric testing performed to IESNA LM-79-08 standards.

THE EDGE® EPA & Weight Calculations

# of LEDs	Approximate Weight		2@			
	120-277V ¹	Single	180°	90°	3@ 90°	4@ 90°
Fixed Arm Mount						
20	21.0 lbs.	0.60	1.20	0.87	1.47	1.75
40	23.7 lbs.	0.60	1.20	0.87	1.47	1.75
60	27.0 lbs.	0.60	1.20	0.92	1.51	1.83
80	28.1 lbs.	0.60	1.20	0.96	1.55	1.91
100	32.3 lbs.	0.60	1.20	1.00	1.60	2.00
120	33.5 lbs.	0.60	1.20	1.04	1.64	2.08
140	36.9 lbs.	0.60	1.20	1.08	1.68	2.16
160	41.4 lbs.	0.60	1.20	1.12	1.72	2.24
180	42.1 lbs.	0.60	1.20	n/a ²	n/a ²	n/a ²
200	43.3 lbs.	0.61	1.21	n/a ²	n/a ²	n/a ²
220	46.6 lbs.	0.65	1.29	n/a ²	n/a ²	n/a ²
240	47.8 lbs.	0.69	1.38	n/a ²	n/a ²	n/a ²

1. Add 5 lbs. for transformer in 347-480V fixtures when 525mA drive current or multi-level options are selected
 2. For applications requiring 180 or more LEDs at 90 degrees refer to the DL mount version of our spec sheet.

NOTE: All data subject to change without notice.

© 2010 BetaLED®, a division of Ruud Lighting • 1200 92nd Street • Sturtevant, WI 53177 • 800-236-6800 • www.betaLED.com

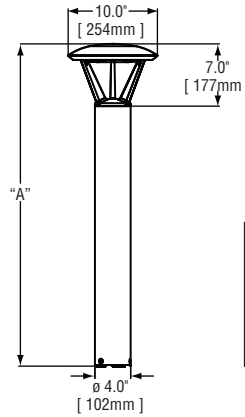


Made in the U.S.A. of U.S. and imported parts.
Meets Buy American requirements within the ARRA.





Notes:



Model	Dim. "A"
Landscape-12	13"
Landscape-18	18"
Pathway	36"
Pathway	42"
Pedestrian	96"

Product	Family	Optic	Mounting	# of LEDs (x 10)	LED Series	Voltage	Color Options	Factory-Installed Options
PWY	EDG Pathway Light	2M ¹ Type II Medium	P0 ² P1 ³ P3 ⁴ P4 ⁵ P8 ⁶	02 ⁷	C	UL Universal 120–277V UH ⁸ Universal 347–480V 12 27 277V 34 ⁹ 347V	SV Silver BK Black WH White BZ Bronze PB Platinum Bronze	Please type additional options in manually on the lines provided above. 43K 4300K Color Temperature ⁹ 525 525mA Drive Current ¹⁰ F Fuse ^{11,12} HL Hi/Low (175/350/525, dual circuit input) ^{13,14} TL Two-Level (175/525 w/ integrated sensor control) ^{13,14} TL2 Two-Level (0/350 w/ integrated sensor control) ^{13,14} TL3 Two-Level (0/525 w/ integrated sensor control) ^{13,14}

Footnotes

- 1. IESNA Type II Medium distribution
- 2. 13" landscape fixture
- 3. 18" landscape fixture
- 4. 3' pathway fixture (bollard)
- 5. 42" pathway fixture (bollard)
- 6. 8' pedestrian fixture
- 7. Actual number of LEDs provided is 18
- 8. Available with 3, 4 and 8 mounting options
- 9. Color temperature per fixture; minimum 70 CRI
- 10. Driver operates at 525mA instead of the standard 350mA providing a higher lumen output and a shorter life
- 11. Not available when UH voltage is selected
- 12. When code dictates fusing use time delay fuse
- 13. Refer to multi-level spec sheet for availability and additional information
- 14. Available with 1, 3, 4 and 8 mounting options

LED PERFORMANCE SPECS																
# of LEDs	Initial Delivered Lumens – Type II Medium @ 6000K	Rating***			Initial Delivered Lumens – Type II Medium @ 4300K	Rating***			System Watts 120–277V	Total Current @ 120V	Total Current @ 230V	Total Current @ 277V	System Watts 347–480V*	Total Current @ 347V	Total Current @ 480V	L ₇₀ Hours** @ 25° C (77° F)
		B	U	G		B	U	G								
350mA (Standard) Fixture Operating at 25° C (77° F)																
18	1,383 (02)	1	2	1	1,213 (02)	0	2	1	24	0.20	0.11	0.10	30	0.10	0.14	150,000
525mA Fixture Operating at 25° C (77° F)																
18	1,798 (02)	1	2	1	1,577 (02)	1	2	1	38	0.32	0.18	0.16	44	0.13	0.15	92,000

* Utilizes magnetic step-down transformer when 525mA drive current or multi-level options are selected ** For recommended lumen depreciation data see TD-13 *** For more information on the IES BUG (Backlight-Uplight-Glare) Rating visit www.iesna.org/PDF/Erratas/TM-15-07BugRatingsAddendum.pdf

NOTE: All data subject to change without notice.



General Description

Slim, low profile design. Fixture is constructed from rugged extruded aluminum, die cast aluminum and stamped metal components. LED driver is mounted in extruded aluminum fixture ends and sealed for weather-tight operation. High performance aluminum heatsinks specifically designed for LED parking structure application. Pendant mount includes 36" cord of fixture. Five year limited warranty on fixture.

Electrical

Modular design accommodates varied lighting output from high power, white, 6000K (+/- 500K per full fixture), minimum 70 CRI, long life LED sources. 120-277V 50/60 Hz, Class 1 LED drivers are standard. LED drivers have power factor >90% and THD <20% of full load. Units provided with integral 10kV surge suppression protection standard. Surge protection tested in accordance with IEEE C62.41.2 and ANSI standard 62.41.2.

Testing & Compliance

UL listed in the U.S. and Canada for wet locations. Consult factory for CE Certified products. Fixture also available with CE listing. RoHS compliant. International Dark-Sky Association approved.

Finish

Exclusive Colorfast DeltaGuard® finish features an E-Coat epoxy primer with an ultra-durable silver powder topcoat, providing excellent resistance to corrosion, ultraviolet degradation and abrasion. Bronze, black, white and platinum bronze powder topcoats are also available. The finish is covered by our 10 year limited warranty.

Fixture and finish are endurance tested to withstand 5,000 hours of elevated ambient salt fog conditions as defined in ASTM Standard B 117.

Patents

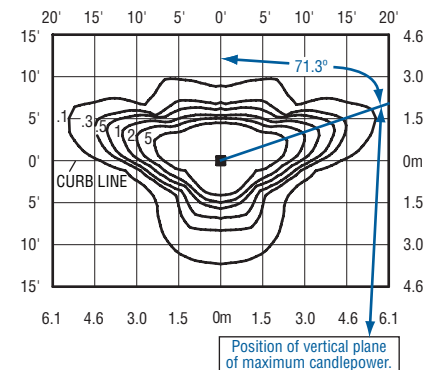
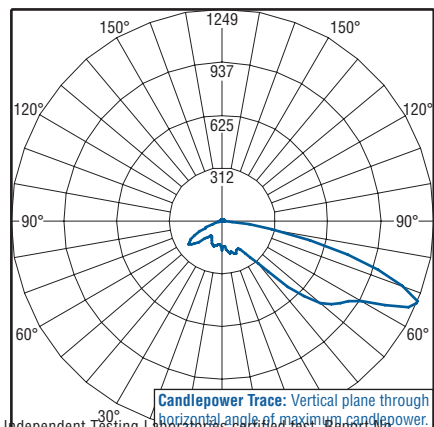
U.S. and international patents granted and pending. BetaLED is a division of Ruud Lighting, Inc. For a listing of Ruud Lighting, Inc. patents, visit www.uspto.gov.

Field-Installed Accessories



Retro-Fit Kit
Used for replacement of existing bollards.
XA-XBPRSV
XA-XBP8RBK
XA-XBP8RWH
XA-XBP8RBZ
XA-XBP8RPB

Photometrics



Independent Testing Laboratories published test report No. ITL64981. Candlepower trace of 6000K, 18 LED Type II Medium pathway luminaire with 1,383 initial delivered lumens operating at 350mA. All published luminaire photometric testing performed to IESNA LM-79-08 standards.

Isofootcandle plot of 6000K, 18 LED Type II Medium pathway luminaire at 3' A.F.G. Luminaire with 1,383 initial delivered lumens operating at 350mA. Initial FC at grade.

NOTE: All data subject to change without notice.

© 2010 BetaLED®, a division of Ruud Lighting • 1200 92nd Street • Sturtevant, WI 53177 • 800-236-6800 • www.betaLED.com

Made in the U.S.A. of U.S. and imported parts.
Meets Buy American requirements within the ARRA.

