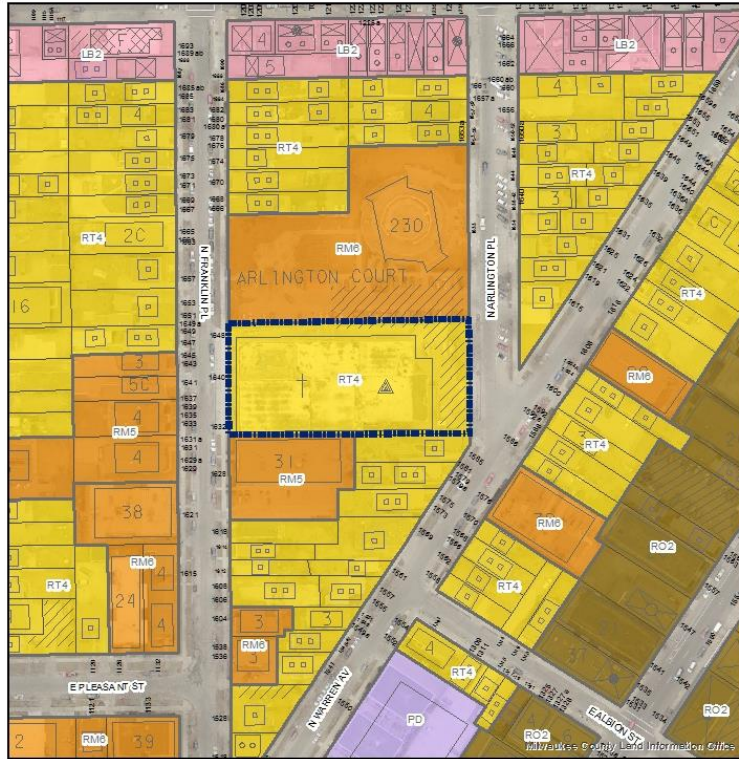



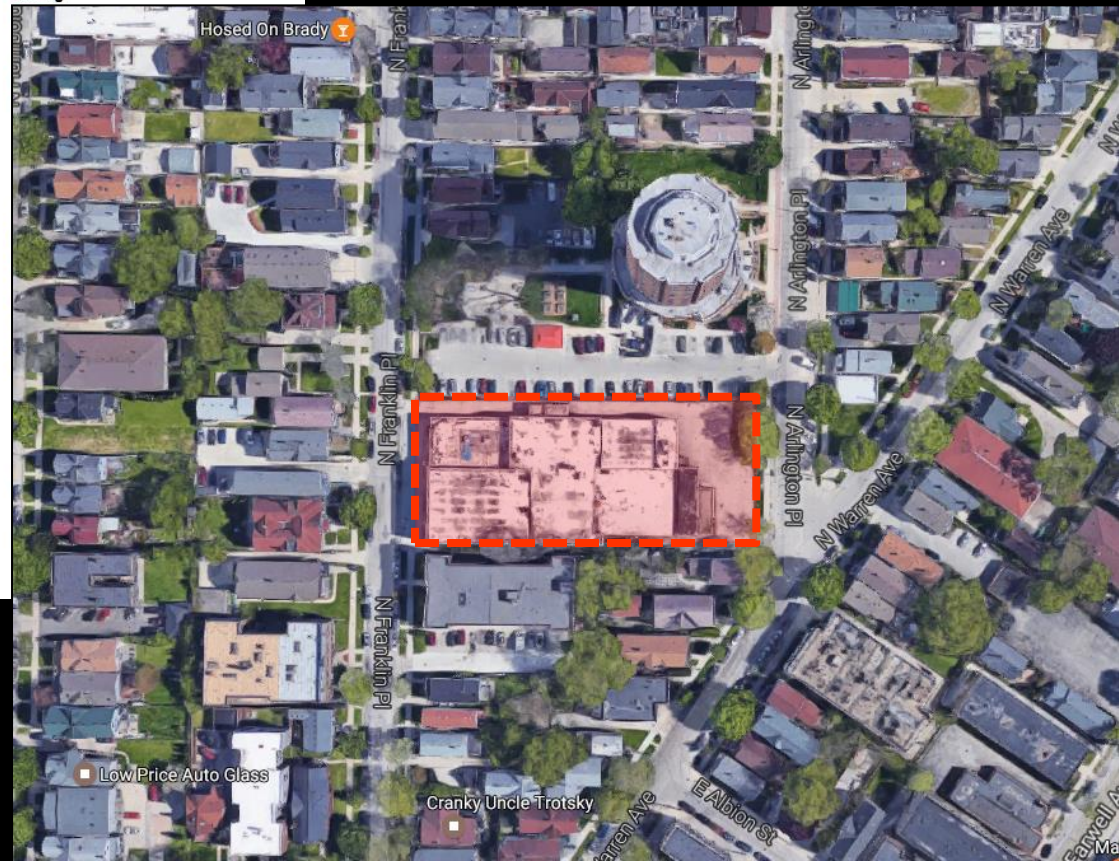
File No. 161590. A substitute ordinance relating to the change in zoning from Two-Family Residential, RT4, to a Detailed Planned Development for multi-family residential development at 1632-1648 North Franklin Place, located on the east side of North Franklin Place, south of East Brady Street, in the 3rd Aldermanic District.



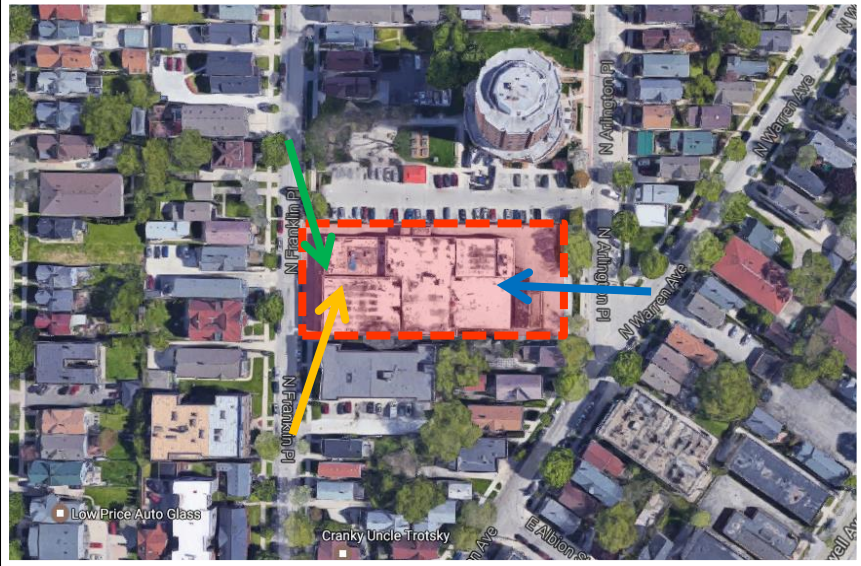
File No. 161590
RT4 to DPD
1632 N. Franklin Pl.
April 2017

Legend

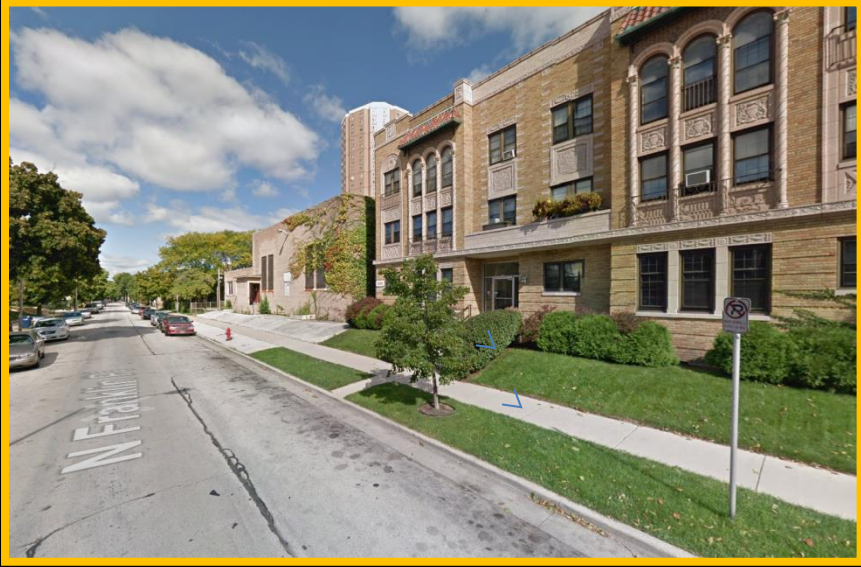
-  Zoning Change Boundary
- Zoning**



File No. 161590. Site Context Photos



View from North Warren Avenue and North Arlington Place



View from North Franklin Place, looking northeast



View from North Franklin Place, looking southeast

FRANKLIN PLACE REDEVELOPMENT

1632 N. FRANKLIN PL
MILWAUKEE, WI

SHEET INDEX

SHEET ID	SHEET TITLE
A1	GROUND FLOOR
A2	LOWER LEVEL
A3	LEVEL 2
A4	LEVEL 3-5
A5	BUILDING ELEVATIONS
A6	BUILDING ELEVATIONS
A7	PERSPECTIVE LOOKING SOUTH
A8	PERSPECTIVE LOOKING NORTH
A9	PERSPECTIVE LOOKING NORTH
A10	PERSPECTIVE LOOKING SOUTH
A11	BUILDING DATA
A12	UNIT MIX
S-1	ALTA/ACSM LAND TITLE SURVEY
C101	SITE DEMOLITION PLAN
C102	SITE PLAN
C103	SITE GEOMETRIC PLAN
C104	SITE GRADING PLAN
C105	SITE UTILITY PLAN
C106	SITE EROSION CONTROL PLAN
C107	SITE DETAILS
L101	SITE LANDSCAPE PLAN
L102	SITE LANDSCAPE DETAILS
ES100	LIGHTING POINT-BY-POINT CALCULATIONS
ES101	OA FIXTURE CUT SHEETS
ES102	OB FIXTURE CUT SHEETS
ES103	OC FIXTURE CUT SHEETS



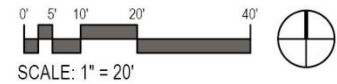
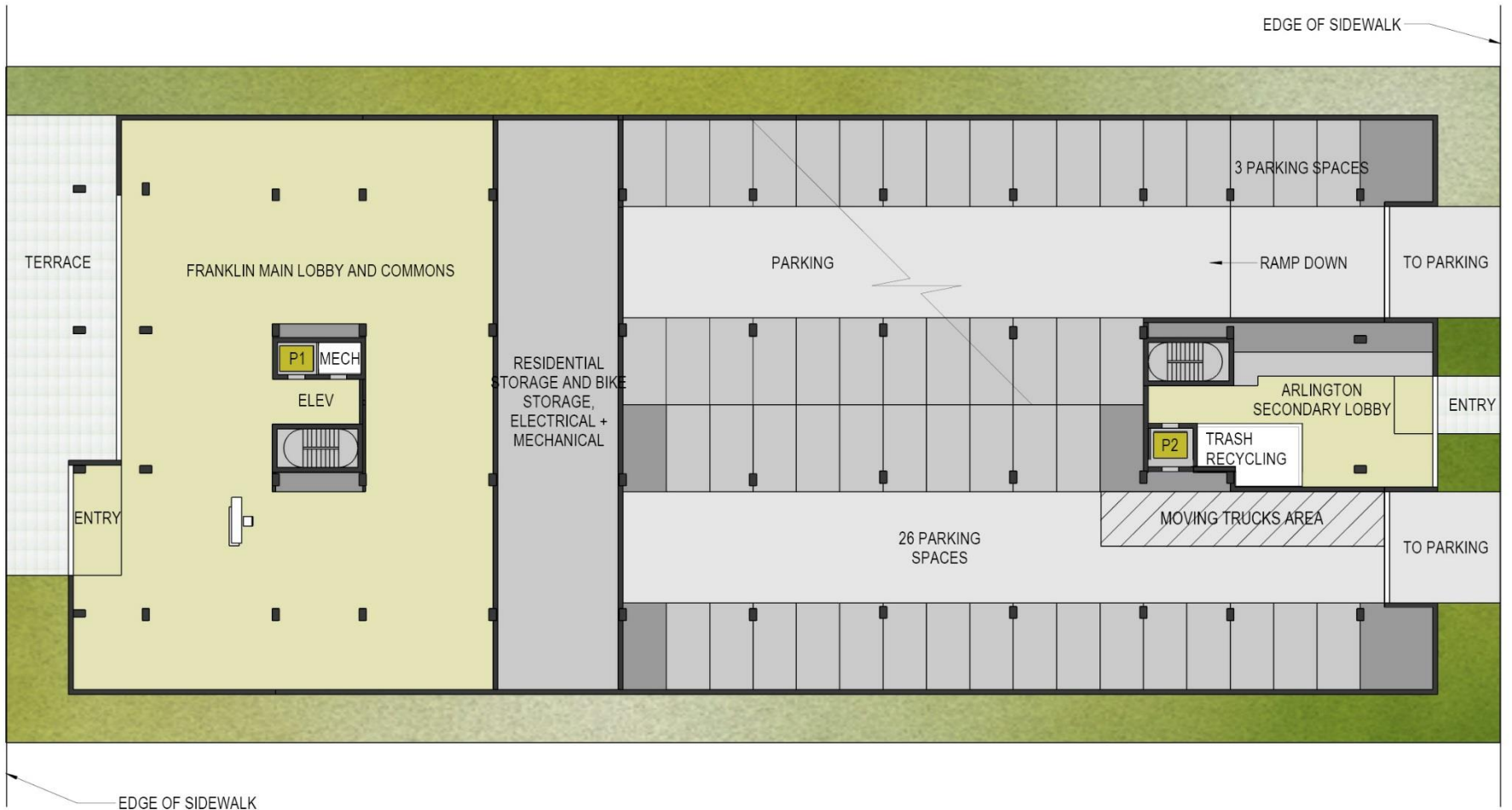
eppstein uhen : architects

DPD SUBMITTAL

FILE NUMBER: 161590

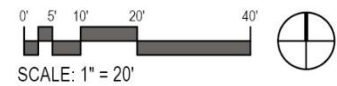
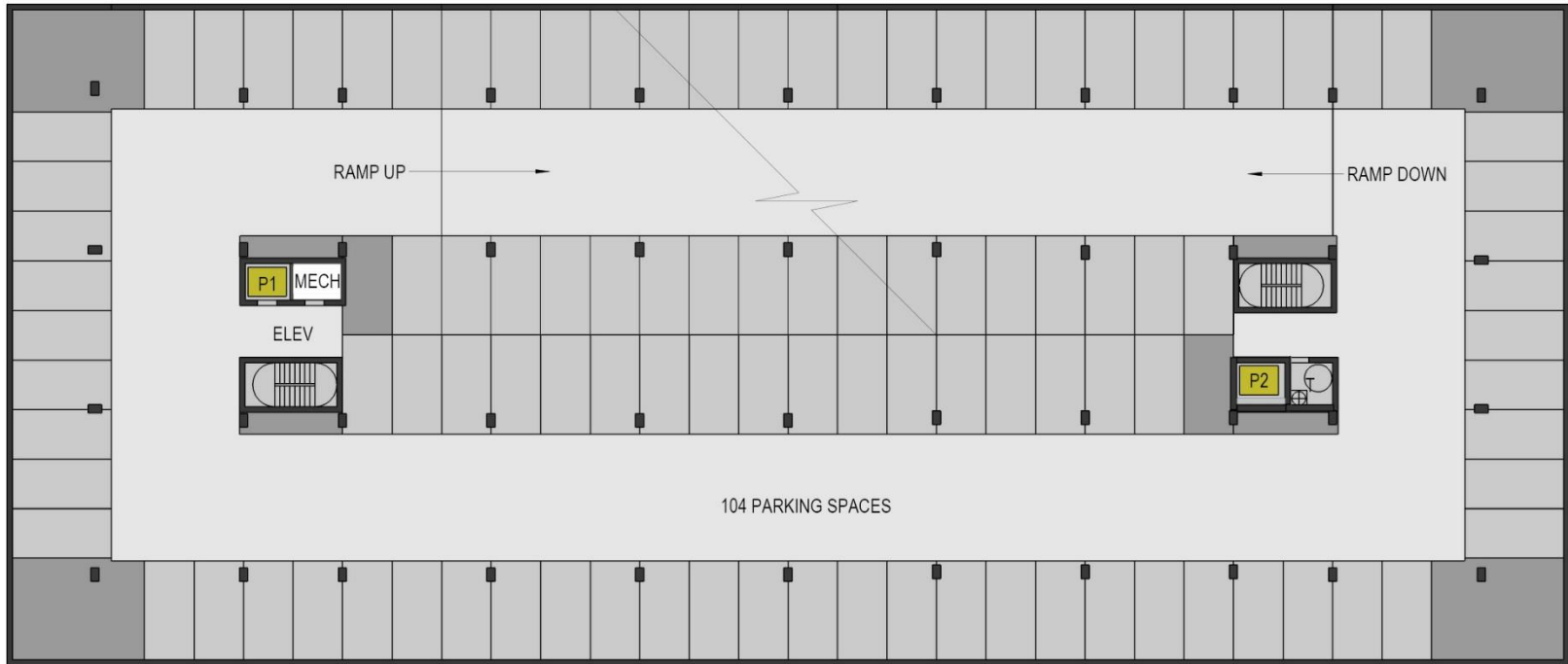
03/23/2017

PROJECT NUMBER: 115316



FRANKLIN PLACE REDEVELOPMENT

A1 - GROUND FLOOR



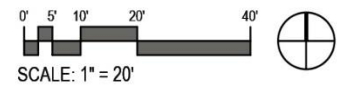
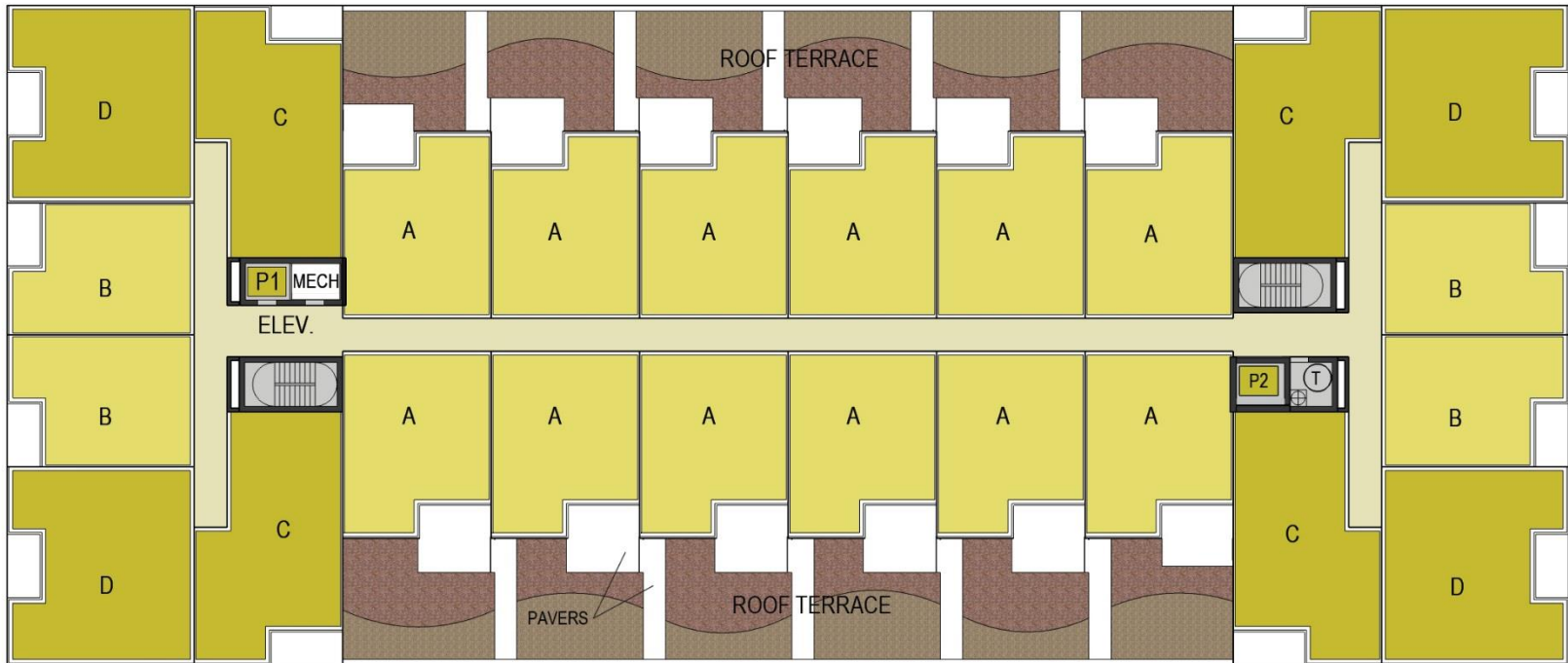
FRANKLIN PLACE REDEVELOPMENT

A2 - LOWER LEVEL



epstein uhen : architects

03/23/17 15316
© Epstein Uhen Architects, Inc.

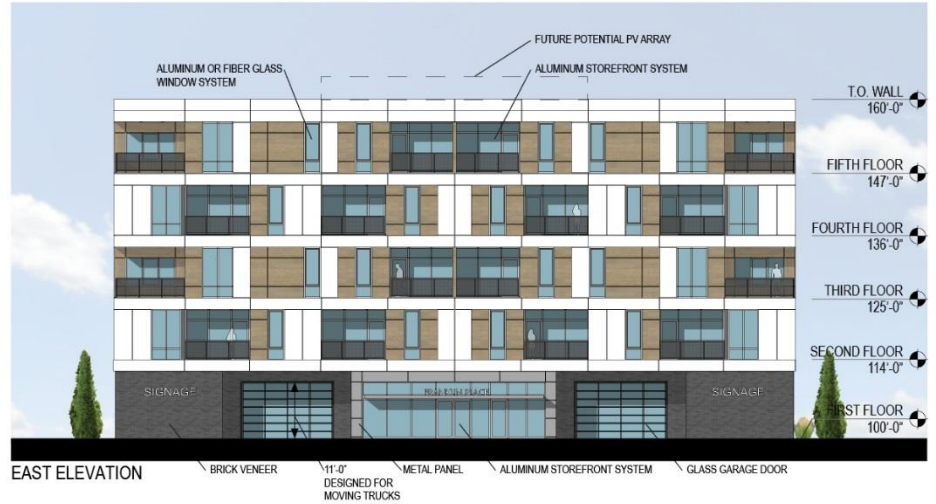


FRANKLIN PLACE REDEVELOPMENT

A3 - LEVEL 2



epstein uhen : architects
 03/23/17 15316
 © Epstein Uhen Architects, Inc.

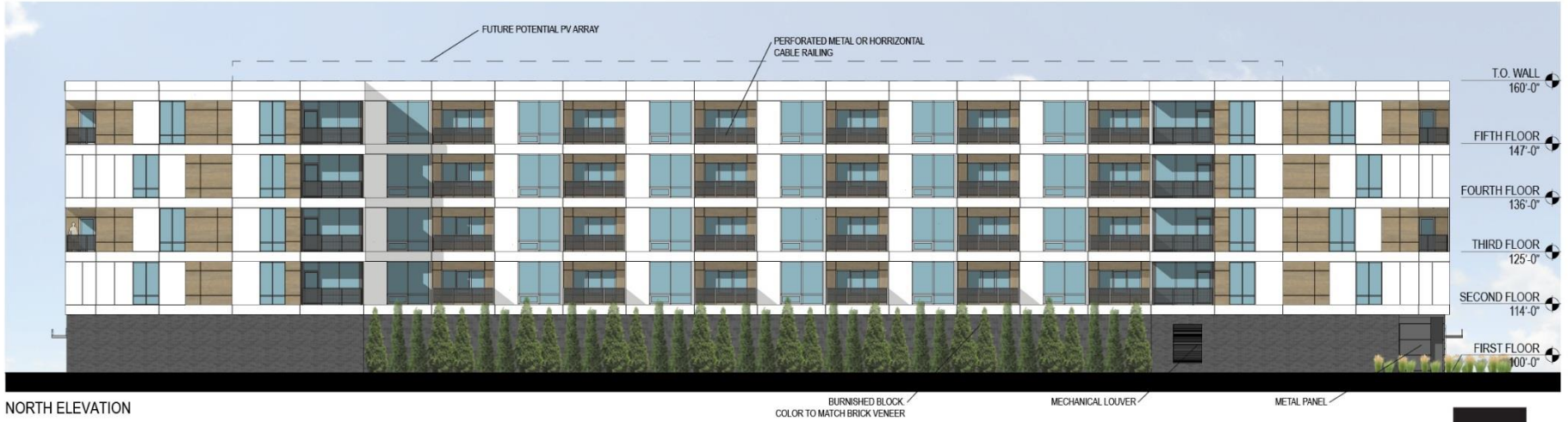


FRANKLIN PLACE REDEVELOPMENT

A5 - BUILDING ELEVATIONS



WEST ELEVATION



NORTH ELEVATION

FRANKLIN PLACE REDEVELOPMENT

A6 - BUILDING ELEVATIONS



epstein uhen : architects



FRANKLIN PLACE REDEVELOPMENT

A7 - PERSPECTIVE LOOKING SOUTH



epstein uhen : architects

03/23/17 15316
© Epstein Uhen Architects, Inc.



FRANKLIN PLACE REDEVELOPMENT

A8 - PERSPECTIVE LOOKING NORTH



epstein uhen : architects



FRANKLIN PLACE REDEVELOPMENT

A9 - PERSPECTIVE LOOKING NORTH



epstein uhen : architects

03/23/17 15316
© Epstein Uhen Architects, Inc.



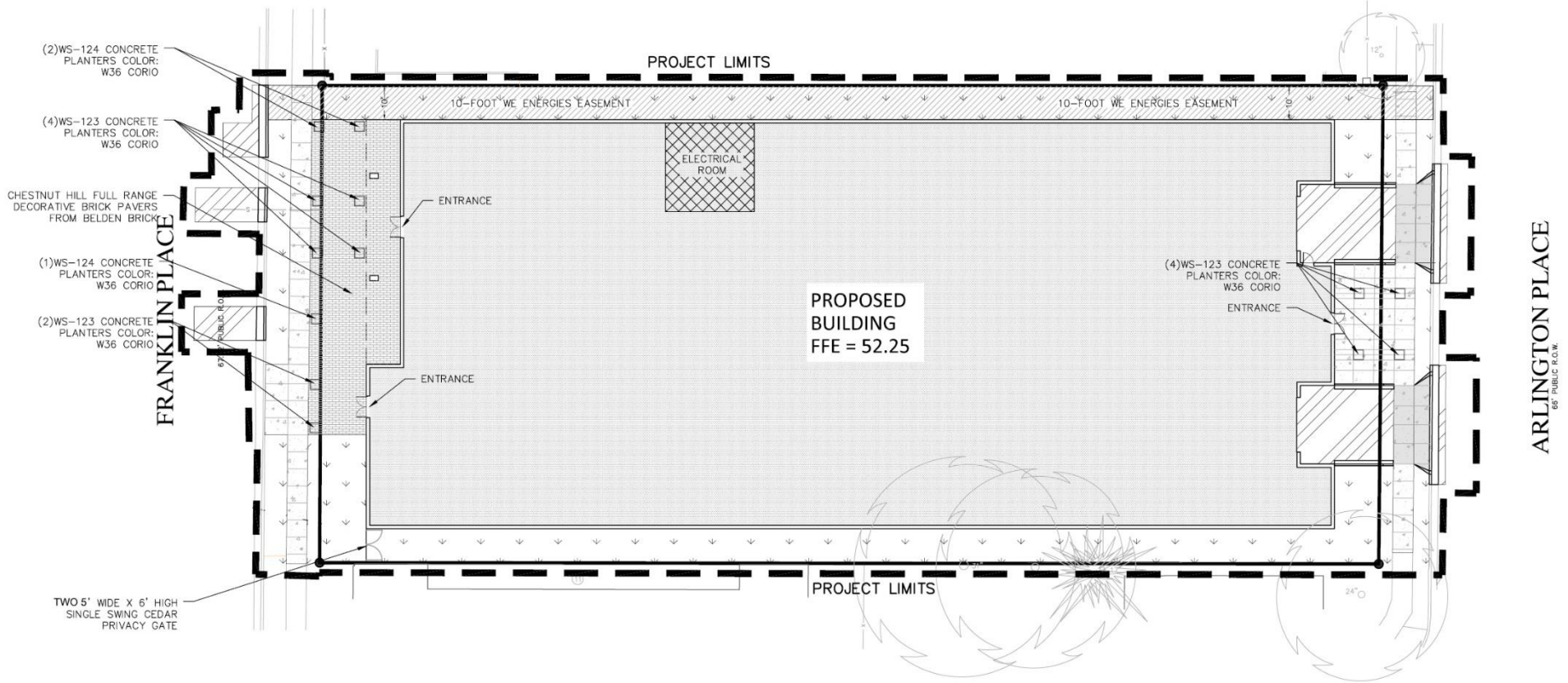
FRANKLIN PLACE REDEVELOPMENT

A10 - PERSPECTIVE LOOKING SOUTH



epstein uhen : architects

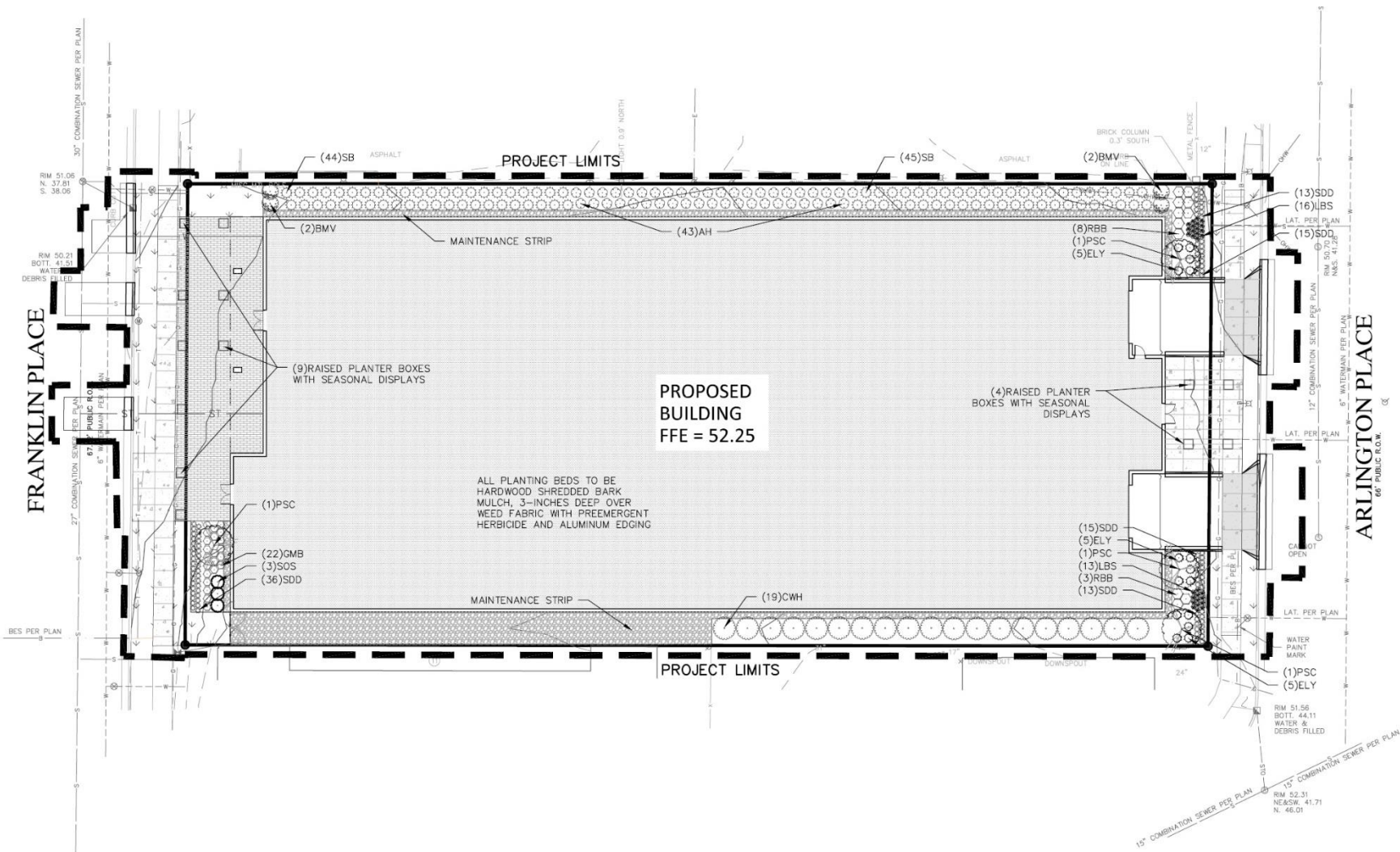
03/23/17 15316
© Epstein Uhen Architects, Inc.



FRANKLIN PLACE REDEVELOPMENT

C102 - SITE PLAN





FRANKLIN PLACE REDEVELOPMENT

L101 - SITE LANDSCAPE PLAN



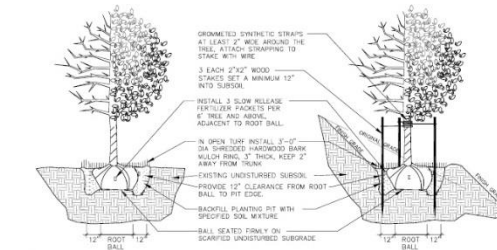
Plant Schedule						
Scientific Name	Common Name	Quantity	Spacing	Install Size	Size Maturity in ft. (Height/Spread)	
Deciduous Trees						
SOS	<i>Amelanchier alnifolia</i> 'Obelisk'	3	Per Plan	5' tall B&B	15'4"	
PSC	Mauis 'Pink Sparkles'	4	Per Plan	1.5' caliper B&B	15'12"	
Deciduous Shrubs						
AH	<i>Hydrangea arborescens</i> 'Annabelle'	43	Per Plan	#3 cont.	4'4"-5'	
CWH	<i>Hamamelis virginiana</i>	19	Per Plan	#5 cont.	12-20'/12-15'	
RBB	<i>Euonymus alata</i> 'Rudy Haag'	11	Per Plan	#3 cont.		
SB	<i>Symphoricarpos albus</i>	99	Per Plan	#3 cont.		
BMV	<i>Viburnum dentatum</i> 'Christom'	4	Per Plan	#3 cont.	8-10'/8-10'	
Evergreen Shrubs						
ELY	<i>Taxus x media</i> 'Everlow'	15	Per Plan	#3 cont.	2-3/4-5'	
GMB	<i>Buxus x Green Mound</i>	22	Per Plan	#5 cont.	3'3"	
Perennials						
LBS	<i>Schizachyrium scoparium</i>	29	Per Plan	1 gal.		
SDD	<i>Hemerocallis</i> 'Stella D'Oro'	92	Per Plan	1 gal.		

NOTE: Installation contractor is responsible for verifying plant count from plan. Plant quantities take precedence over list.

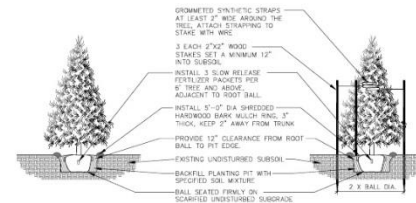
1 LANDSCAPE SCHEDULE
REFER TO SPECIFICATIONS FOR ADDITIONAL INFORMATION

- ALL PLANT MATERIAL SHALL BE OBTAINED FROM A NURSERY LOCATED IN ZONE 3, CONFORM TO APPLICABLE REQUIREMENTS OF THE CURRENT EDITION OF THE AMERICAN STANDARD FOR NURSERY STOCK, AND BOTANICAL NAMES SHALL BE ACCORDING TO THE CURRENT EDITION OF "STANDARDIZED PLANT NAMES PREPARED BY THE AMERICAN JOINT COMMITTEE ON HORTICULTURE NOMENCLATURE."
- CONTRACTOR TO PROVIDE TO THE LANDSCAPE ARCHITECT SAMPLES OF ALL BARK AND MINERAL/STONE MULCHES, DECORATIVE GRAVELS, MAINTENANCE STRIP STONE, OR OTHER GROUND COVER MATERIALS FOR APPROVAL PRIOR TO INSTALLATION.
- BARK MULCH TO BE FRESHLY ACQUIRED HARDWOOD SHREDDED BARK MULCH. NOT DOUBLE MULCH, EXCESSIVE DIRT AND DUST LIKE MATERIAL OR OLD MATERIAL IS NOT ACCEPTABLE.
- LANDSCAPE EDGING TO BE ALUMINUM EDGING. REFER TO SPECIFICATION 32 93 00 PLANTS FOR ADDITIONAL INFORMATION.
- ALL PLANTING AREAS TO RECEIVE A 3-INCH THICK LAYER OF HARDWOOD SHREDDED BARK MULCH OVER TYPAR WEED FABRIC WITH EDGING. EDGING TO BE INSTALLED BETWEEN DIFFERENT TYPES OF MULCHES, BETWEEN MULCHES AND TURF, AND/OR WHERE SPECIFICALLY NOTED ON THE PLAN. REFER TO SPECIFICATION 32 93 00 PLANTS FOR ADDITIONAL INFORMATION.
- INSTALL SHOVEL CUT EDGE AROUND ALL INDIVIDUAL TREES AND SHRUBS IN LAWN AREAS AND ALONG PAVEMENT WHERE PLANTING AREAS ADJUT TO PREVENT HARDWOOD SHREDDED BARK MULCH FROM SPILLING OUT OF PLANTING AREA.
- CONTRACTOR RESPONSIBLE FOR MAINTENANCE OF PLANT MATERIAL FOR 90 DAYS FROM INSTALLATION, INCLUDING WATERING, WEEDING, ETC. CONTRACTOR IS RESPONSIBLE FOR MAINTENANCE OF SEEDER AREAS FOR 90 DAYS FROM INSTALLATION, INCLUDING WATERING, WEEDING, ETC. CONTRACTOR TO PROVIDE AND REVEAL MAINTENANCE INSTRUCTIONS WITH THE ORDER PRIOR TO THE COMPLETION OF THESE MAINTENANCE PERIODS. REFER TO SPECIFICATIONS FOR ADDITIONAL REQUIREMENTS.
- CLEARLY PRUNE AND REMOVE DAMAGED BRANCHES, DEAD WOOD, AND ROOTS IMMEDIATELY PRIOR TO PLANTING. DO NOT CUT LEADERS OR LEAVE "Y" CRITCHES OR DOUBLE LEADERS UNLESS A MULTI-STEM TREE IS SPECIFIED.
- REMOVE BURLAP, WIRE BASKET, ROPE, TWINE, AND ALL SYNTHETIC MATERIAL FROM THE ROOTS, TRUNK, OR CROWN OF PLANT.
- REMOVE EXCESS SOIL ABOVE ROOT COLLAR.
- PLANT TREES AND SHRUBS SO THAT THE ROOT COLLAR IS 2" ABOVE FINISHED GRADE OR SEVERAL INCHES ABOVE GRADE IF PLANT IS INSTALLED IN POOR SOILS.
- PLANT TREES AND SHRUBS WITH SAME ORIENTATION AS WHEN HARVESTED FROM THE NURSERY OR TO SHOWCASE THE MOST AESTHETIC VIEW.
- PLANT ALL TREES WITH THREE SLOW RELEASE FERTILIZER PACKETS, SPACED EQUIDISTANT AROUND THE EDGE OF THE ROOT BALL.
- PLANT ALL SHRUBS WITH ONE SLOW RELEASE FERTILIZER PACKET, PLACED BELOW THE ROOTING SYSTEM.
- WATER AND TAMP BACKFILL AND ROOTS OF ALL NEWLY SET PLANT MATERIAL SO THE SOIL AND ROOTS ARE THOROUGHLY SOAKED AND AIR POCKETS ARE REMOVED.
- FOR INDIVIDUAL TREES & SHRUBS PLANTED IN TURF AREAS PROVIDE CONTINUOUS 3" SOIL SAUCER TO CONTAIN WATER & MULCH. TREES ON SLOPES SHALL BE SAUCERED ON THE DOWNHILL SIDE.
- INSTALL 3" THICK SHREDDED HARDWOOD BARK MULCH RING 3'-0" DIA. FOR DECIDUOUS TREES AND ALL INDIVIDUAL SHRUBS IN LAWN AREAS, 5'-0" DIA. FOR EVERGREEN TREES. KEEP MULCH 2" AWAY FROM TRUNKS.
- STAKING - ONLY STAKE EVERGREEN TREES 5'-0" OR GREATER IN HEIGHT OR TREES THAT ARE UNABLE TO REMAIN UPRIGHT AFTER PLANTING. TREES WILL BECOME STRONGER FASTER WHEN THE TOP 2/3 OF THE TREE IS FREE TO SWAY - DO NOT ATTACH WIRE DIRECTLY TO BRANCHES OR THROUGH HOSES - UTILIZE GROMMETTED SYNTHETIC STRAPS AT LEAST 2" WIDE AROUND THE TREE, ATTACH STRAPPING TO STAKE WITH WIRE. STAKE ONLY WHEN NECESSARY. STRAPS SHOULD BE CHECKED DURING VISITS TO THE GROUND TO PREVENT DISEASING. CHECK AT LEAST EVERY THREE MONTHS FOR BINDING OR OTHER PROBLEMS. STAKES AND TIES SHOULD BE REMOVED SIX MONTHS TO ONE YEAR AFTER PLANTING.
- REFER TO SPECIFICATIONS 32 93 00 PLANTS AND 32 92 00 TURF AND GRASSES FOR ADDITIONAL INFORMATION.

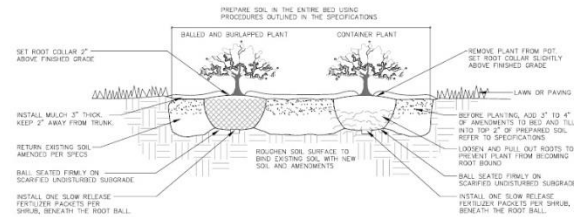
2 LANDSCAPE NOTES
REFER TO SPECIFICATIONS FOR ADDITIONAL INFORMATION



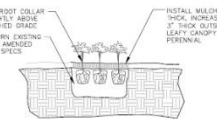
3 DECIDUOUS TREE PLANTING, STAKING, & PLANTING ON A SLOPE
R.T.S.



4 EVERGREEN TREE PLANTING & STAKING
R.T.S.



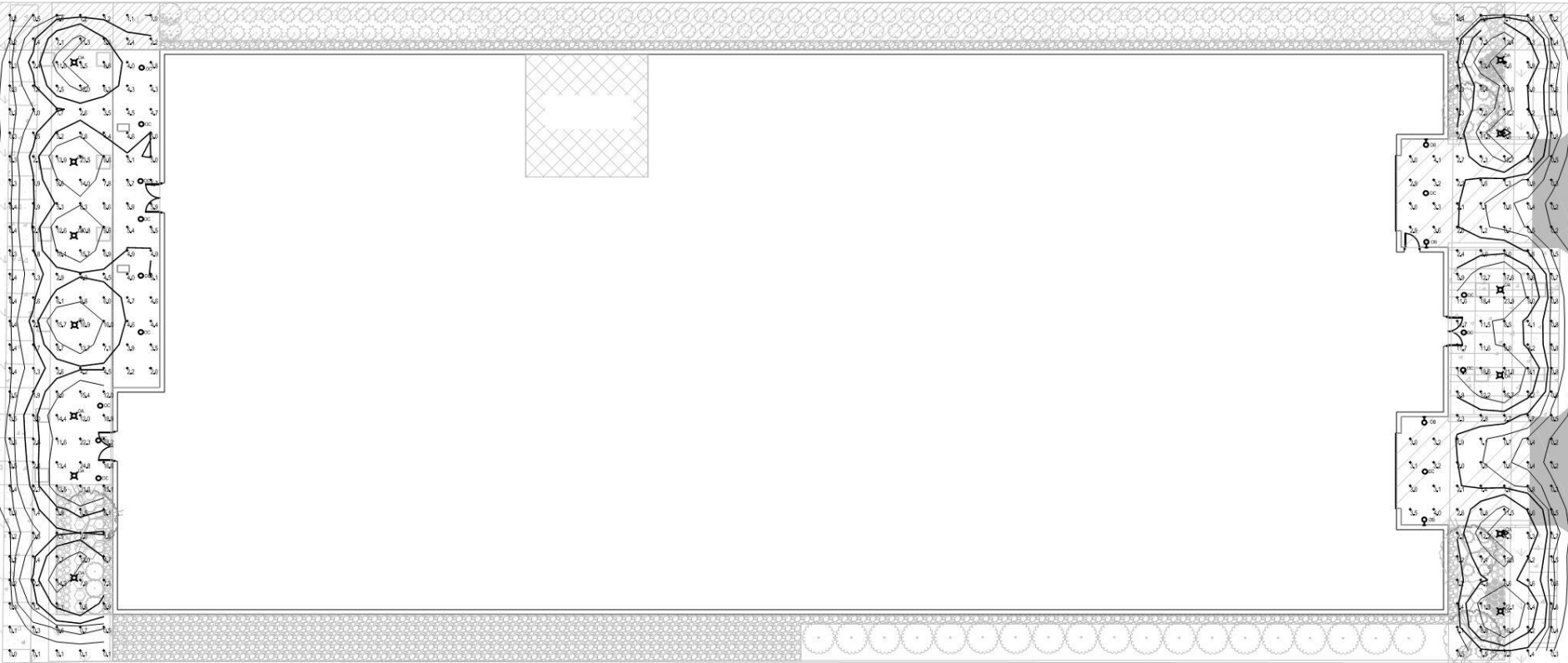
5 DECIDUOUS & EVERGREEN SHRUB PLANTING
R.T.S.



6 PERENNIAL PLANTING
R.T.S.

FRANKLIN PLACE REDEVELOPMENT

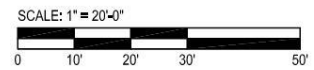
L102 - SITE LANDSCAPE DETAILS



Calculation Summary							
Level	Calc Type	Units	Area	Max	Min	Avg/Mean	Min/Max
Franklin	Reference	FC	2,488	31.0	0.0	N/A	N/A
Franklin	Reference	FC	2,487	25.0	0.0	N/A	N/A

Lighting Schedule						
Symbol	Qty	Label	Description	Tag	Total Watts	
○	13	OSCON_12x14_100_40_40_0/170	OSCON	OS	264	
□	4	OLLWD	WFS Source	OS	264	
○	14	WFS_LED_40K	WFS LED 40K	OC	188	

Foot Candles	
Color	Value
Black	0.0
Dark Grey	1
Medium Grey	2
Light Grey	5
White	10



FRANKLIN PLACE REDEVELOPMENT

LIGHTING POINT-BY-POINT CALCULATIONS



D-Series LED Bollard



d-series

Specifications

Diameter: 6" Round (90.3 cm)
Height: 42" (106.7 cm)
Weight (max): 27 lbs (12.2 kg)



Ordering Number	
Finish	
Type	OA

Introduction

The D-Series LED Bollard is a stylish, energy-saving, long-life solution designed to perform the way a bollard should—with zero uplift. An optical lens forward, this full cut-off luminaire will meet the most stringent of lighting codes. The D-Series LED Bollard's rugged construction, durable finish and long-lasting LEDs will provide years of maintenance-free service.

Ordering Information EXAMPLE: DSXB LED 16C 700 40K 5YM MYOLT DBBX

DSXB LED		Color temperature	Regulation	Voltage	Control options	Power factor	Finish options
ASB LED	Asymmetric TBC 12.15deg	350 350mA	AGY Symmetric 1	120V	None	0.99	White
		400 400mA	AGY Symmetric 1	120V			
Symmetric 10C 19.5deg	350 350mA	350 350mA	AGY Symmetric 1	120V	None	0.99	White
		400 400mA	AGY Symmetric 1	120V			

Accessories

- 1. Ony available in the 120 VAC system.
- 2. Ony available in the 120 VAC system.
- 3. Ony available with 400 mA input current.
- 4. Not available with EOCV.
- 5. WPCV dimmer system on an AC voltage from 100 VAC to 277 VAC.
- 6. Ony available with 400 mA input current and EOCV dimmer system.
- 7. Ony available with 400 mA input current and EOCV dimmer system.
- 8. WPCV dimmer system on an AC voltage from 100 VAC to 277 VAC.

LITHONIA LIGHTING One Lithonia Way • Conyers, Georgia 30621 • Phone: 800-227-5041 • www.lithonia.com
 ©2014-2017 Lithonia Lighting, Inc. All rights reserved.

Performance Data

Lumens per watt as first photometric test performed in accordance with IESNA LM-79-06. Data is provided for measurements of the collimators shown, which the tolerance allowed by lighting facts. Actual performance may differ due to actual system environmental application. Actual wattage may differ by +/- 5% of rated wattage between 100-277V AC.

Type	Beam Angle	Beam Diameter	C-Beam		D-Beam		E-Beam		F-Beam		G-Beam		Beam Spread	Beam Spread	Beam Spread	Beam Spread
			1	2	1	2	1	2	1	2	1	2				
Asymmetric 11.6deg	120	12	1.36	25	1	1	1.28	28	1	1	1.26	31	1	0	1	0
	120	12	1.43	25	1	1	1.36	28	1	1	1.34	31	1	0	1	0
	120	12	2.37	25	1	1	2.25	25	1	1	2.24	25	1	0	1	0
Symmetric 19.5deg	120	12	1.36	25	1	1	1.28	28	1	1	1.26	31	1	0	1	0
	120	12	1.43	25	1	1	1.36	28	1	1	1.34	31	1	0	1	0
	120	12	2.37	25	1	1	2.25	25	1	1	2.24	25	1	0	1	0

Note: Available with photometric correction sensor LEDs from lithium AMEPO. These LEDs produce light with 774K >350 nm. Output can be calculated by applying a 0.7 factor to 1000 K lumen values and photometric facts.

Projected LED Lumen Maintenance

Lumen maintenance is a key performance indicator for the lifetime value of a lighting solution. This table shows the projected lumen maintenance performance of the DSXB LED 16C at 700 mA.

Operating Hours	0	10,000	50,000	100,000
Factor (lumen loss)	1.00	0.98	0.97	0.95

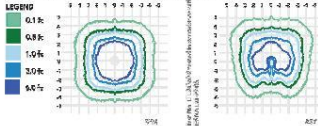
Electrical Load

Light Output	Power Consumption	Current	120	208	277	347
120	25W	0.18	0.18	0.18	0.18	0.18
120	25W	0.18	0.18	0.18	0.18	0.18
120	25W	0.18	0.18	0.18	0.18	0.18
120	25W	0.18	0.18	0.18	0.18	0.18

Photometric Diagrams

To see complete photometric reports or download .dat files for this product, visit Lithonia Lighting's D-Series Bollard homepage.

Refer to the photos for the DSXB LED 700 40K. Distances are in units of mounting height (M).



FEATURES & SPECIFICATIONS

INTENDED USE: The rugged construction and maintenance-free performance of the D-Series LED Bollard is ideal for illuminating both indoor and outdoor parking areas and pedestrian areas, as well as any other location requiring a low-maintenance lighting solution.

CONSTRUCTION: One-piece 8-inch round, extruded aluminum shaft with 4-inch wide rim for ultimate durability and ease of installation. The one-piece aluminum mounting ring allows for easy leveling, even in uneven areas and for 360-degree rotation for precise alignment during installation. The 4.5" x 1.1" end nut bolts provide secure and adjustable 3-3/4" mounting bracket with secure stability. Overall height is 42" standard.

FINISH: Powder coat finish that provides superior resistance to corrosion and weathering for maximum retention of gloss and color. A tightly controlled multi-stage process ensures a minimum 3-mil thickness for a long, stain-free and long-lasting finish without cracking or peeling. Available in both standard and custom finishes.

OPTICS: Two DM 4020 120° optical collimators are available: symmetric and asymmetric. The 11.6° collimator provides a narrow beam angle, while the 19.5° collimator provides a wider beam angle. Light engines are available in standard 4000 K (>90 CRI) or optional 3000 K (>90 CRI) or 5000 K (>90 CRI). Limited-wavelength amber LEDs are also available.

ELECTRICAL: Light engines consist of high efficiency LEDs mounted to metal cores to heat sink to maximize heat dissipation and promote long life (L70/10,000 hours at 700mA at 23°C). Class 2 electronic drivers are designed for an expected life of 100,000 hours with a 1% failure rate. Electrical components are mounted on a PCB with 2mm pitch.

LISTINGS: CSA certified to U.S. and Canadian standards. Light engines are IEC60601 certified for 40°C minimum ambient. On-off memory emergency battery backup for 2-24 hours minimum ambient.

WARRANTY: Five-year limited warranty. Complete warranty terms located at: www.lithonia.com/consumers/warranty/terms_and_conditions.aspx

Note: Actual performance may differ as a result of end-user environment and application. All values are design or typical values measured under laboratory conditions at 25°C. Specifications subject to change without notice.

LITHONIA LIGHTING One Lithonia Way • Conyers, Georgia 30621 • Phone: 800-227-5041 • www.lithonia.com
 ©2014-2017 Lithonia Lighting, Inc. All rights reserved.

DSXB-14SD Rev. 2/6/17

FRANKLIN PLACE REDEVELOPMENT

"OA" LIGHTING CUT SHEET



epstein when : architects

03/23/17 15316

© Epstein When Architects, Inc.



FEATURES & SPECIFICATIONS

INTENDED USE

Provides years of maintenance-free illumination for outdoor use in residential & commercial applications. Ideal for applications such as lighting walkways and stairways for safety and security.

CONSTRUCTION

Cast aluminum housing with corrosion-resistant polycarbonate lens cover or etched lens.

OPTICS

4000 CCT LED.

ELECTRICAL

IP67 rated, offers on any line voltage from 120-277V.

Operating temperature: -30°C to 40°C.

INSTALLATION

Surface mounts to universal junction box (provided by others).

LISTINGS

UL listed in U.S. and Canada safety standards for wet locations.

Noted in accordance with IESNA LM-79 and LM-80 standards.

WARRANTY — 5-year limited warranty. Complete warranty terms located at www.lithonia.com/specifications/resources/terms_and_conditions.aspx

Actual performance may differ as a result of load, ambient temperature and application.

All values are in % unless noted. Measurements taken under laboratory conditions at 25 °C.

Note: Specifications subject to change without notice.

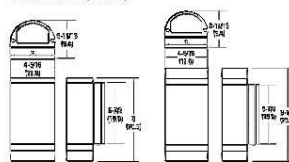
Order Number	
Note	
Type	OB

Outdoor General Purpose OLLWD & OLLWU LED WALL CYLINDER LIGHT



Specifications

All dimensions are inches (millimeters)



PERFORMING INFORMATION For standard head sizes, configure products using ballhead options.

Example: OLLWD LED P1 40K M VOLT DDB

Series	Color Temperature (CCT)	Voltage	Finish
OLLWD LED Downlight	40K 400K	MVOLT 120V-277V	DRB Cast bronze
OLLWU LED Up-light		120V 120V	WH White

Note
1 Only available with OLLWD and DDB

DECORATIVE: INDOOR & OUTDOOR

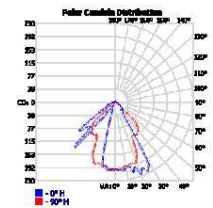
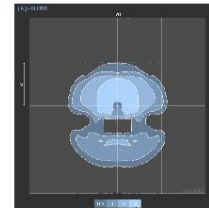
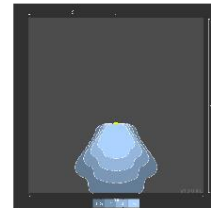
OLLWD-OLLWU

OLLWD & OLLWU LED Wall Cylinder Light

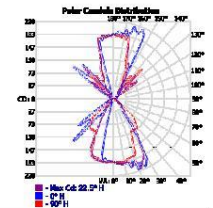
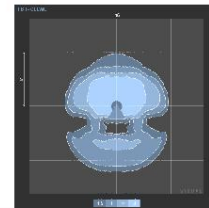
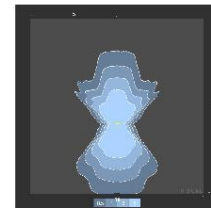
PHOTOMETRICS

To see complete photometric reports or download .ies files for this product, visit Lithonia Lighting's Outdoor LED homepage. Tested in accordance with IESNA LM-79 and LM-80 standards.

OLLWD



OLLWU



OLLWD lighting facts

Light Output (Lumens)	533
Watts	9.1
Lumens per Watt (Efficacy)	58.63
Color Accuracy (CRI/Color Rendition)	70

Light Color: 4000 (Bright White)

OLLWU lighting facts

Light Output (Lumens)	947
Watts	14.6
Lumens per Watt (Efficacy)	67.64
Color Accuracy (CRI/Color Rendition)	70

Light Color: 4000 (Bright White)



DECORATIVE: INDOOR & OUTDOOR One Lithonia Way, Cary, NC 27513 Phone: 1-800-959-5001 www.lithonia.com

© 2012-2017 Acuity Brands Lighting Inc. All rights reserved. P/N: 009297

OLLWD-OLLWU

FRANKLIN PLACE REDEVELOPMENT

"OB" LIGHTING CUT SHEET



epstein when : architects

03/23/17

15316

© Epstein When Architects, Inc.



FEATURES & SPECIFICATIONS

INTENDED USE — The 6" Wafer Thin LED recessed downlight with wafer driver has excellent high quality light output and efficiency. It is ideal for use in applications for your positive affectivity. This innovative wafer thin Type K design allows easy installation for recessed installation or mounted from below making without the requirement for light housing. The LED module maintains at least 25% light output for 50,000 hours. These LED modules are designed for direct, accent, ambient, ballroom, ballroom, kitchen, bathroom, office, entry, garage, garage, gymnasium, mall, office, corridor, parking, restaurant, bar, casino, restaurant, spa, and any other area.

CONSTRUCTION — Ideal for shallow ceiling applications a wafer housing is not required. IC rated driver and wafer - approved for direct contact with insulation. Aluminum die cast extrusion. Durable, powder coat paint process. Heat flux with integral edge-to-LED. Snapping clip for easy installation. Precision rated cable connector to connect from remote to wafer driver unit. Isolated driver integrated inside steel remote box w/ 1 foot 25ft. (maximum) x 1/2 inch for power. Isolation for safety.

INSTALLATION — Ideal for shallow ceiling applications no housing required. Steel snap clip for easy installation. 6" cut out template is provided to ensure correct sized hole is cut into ceiling for proper installation of the trim. Size of hole should not exceed 6" inches for this product.

OPTICS — Wafer thin downlight edge-to-LED technology uses light-painted plate to distribute light. Polycarbonate lens provides even illumination throughout the space. Unlimited 3000K and 4000K color temperature LEDs.

FUNCTIONAL — Designed directly to DMX protocol via 3-wire 24V dimmer driver. High-recessed driver with power factor > 0.95. Ambient lighting temperature -40°F (-40°C) to +147°F (+40°C). Dimming color to 70%. Use page 2 for recommended dimensions. Standard output wattage is 12W, 17W lumens per watt.

LISTINGS — UL certified for US and Canada for standard use. ENERGY STAR certified product. Wet location. Air Trap certified in accordance with IFC550.6-09/14.

WARRANTY — 3-year limited warranty. Complete warranty terms located at: www.lithonia.com/customer-service/terms_and_conditions.aspx

Note: Actual performance may differ as a result of end-user environment and application. All values are design or typical values, measure in your laboratory conditions at 25 °C. Specifications subject to change without notice.

Color	Wafer
Note	
Type	OC

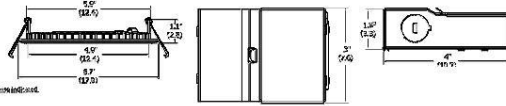
Wafer LED Recessed Downlight
WF6
6" LED Module

IC/Non-IC
Prem Construction/Remodel



Specifications

Aperture	4.5 (12.4)
Ceiling opening	6 (15.2)
Overlap trim:	6.7 (17)
Height:	1.1 (2.8)



All dimensions are inches for illustration unless otherwise noted.

ORDERING INFORMATION For shorter lead times, our gas product using standard options (shown in bold).

Example: WF6 LED 30K MW

WF6	Lamp	CCX/Color/W/Lumens	Finish
WF6 6" wafer thin LED downlight	LED LED	30K 3000K/2500LM/2.6W/2500L	MW Matte white
		40K 4000K/2500LM/2.6W/2500L	BN Brushed nickel
	LL LED .ccw Lumina LED	30K 3000K/3000LM/2.6W/3000L	DB Oil-rubbed bronze
		40K 4000K/3000LM/2.6W/3000L	

Accessories: lithonia.com/customer-service

WF6-WH-2	07 pin cable at the back, retail pack of 12
WF6-BA	Removal joint bar, retail pack of 6
WF6-KA-1	6' FM cable
WF6-KO-1	10' FM cable
WF6-KB-1	20' FM cable



Note: 1. Trimless design.

DOWNLIGHTING

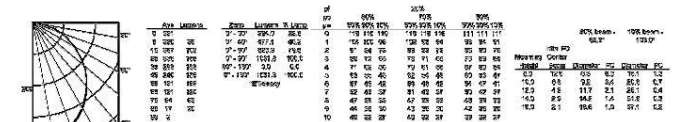
WF6

WF6 6" LED Wafer Module

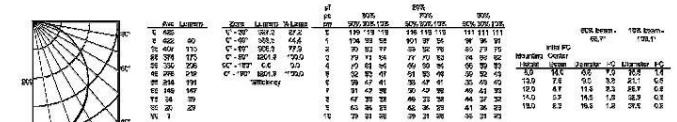
PHOTOMETRICS

Distribution Curve	Distribution Data	Output Data	Coefficient of Utilization	Illuminance Data at 30° Above Floor for a Single Luminaire
--------------------	-------------------	-------------	----------------------------	--

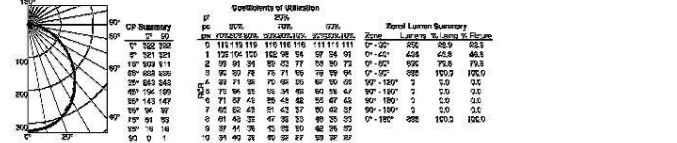
WF6 LED 30K, 3000 K LEDs, Input watts: 10.2, delivered lumens: 1020, LM/W=100, test no. ISF 30024



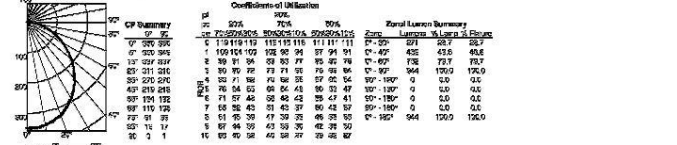
WF6 LED 40K, 4000 K LEDs, Input watts: 13.6, delivered lumens: 1200, LM/W=88.2, test no. ISF 30295



WF6 LL LED 30K, 3000 K LEDs, Input watts: 12.6, delivered lumens: 965, LM/W=68.7, test no. ISF 32781



WF6 LL LED 40K, 4000 K LEDs, Input watts: 12.9, delivered lumens: 944, LM/W=73.2, test no. ISF 32780



DOWNLIGHTING 6" Lithonia Way, Conroe, TX 77385-7507 Phone: 800-315-4933 Fax: 770-860-3129 www.lithonia.com

©2017 Acuity Brands Lighting, Inc. All rights reserved. Rev. 02/15/17

FRANKLIN PLACE REDEVELOPMENT

"OC" LIGHTING CUT SHEET



ppstein when : architects

03/23/17 15316

© Eppstein Uhen Architects, Inc.