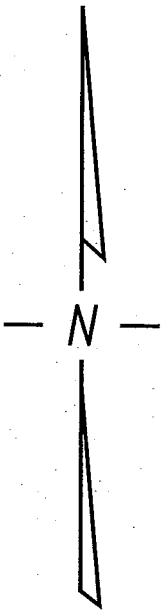


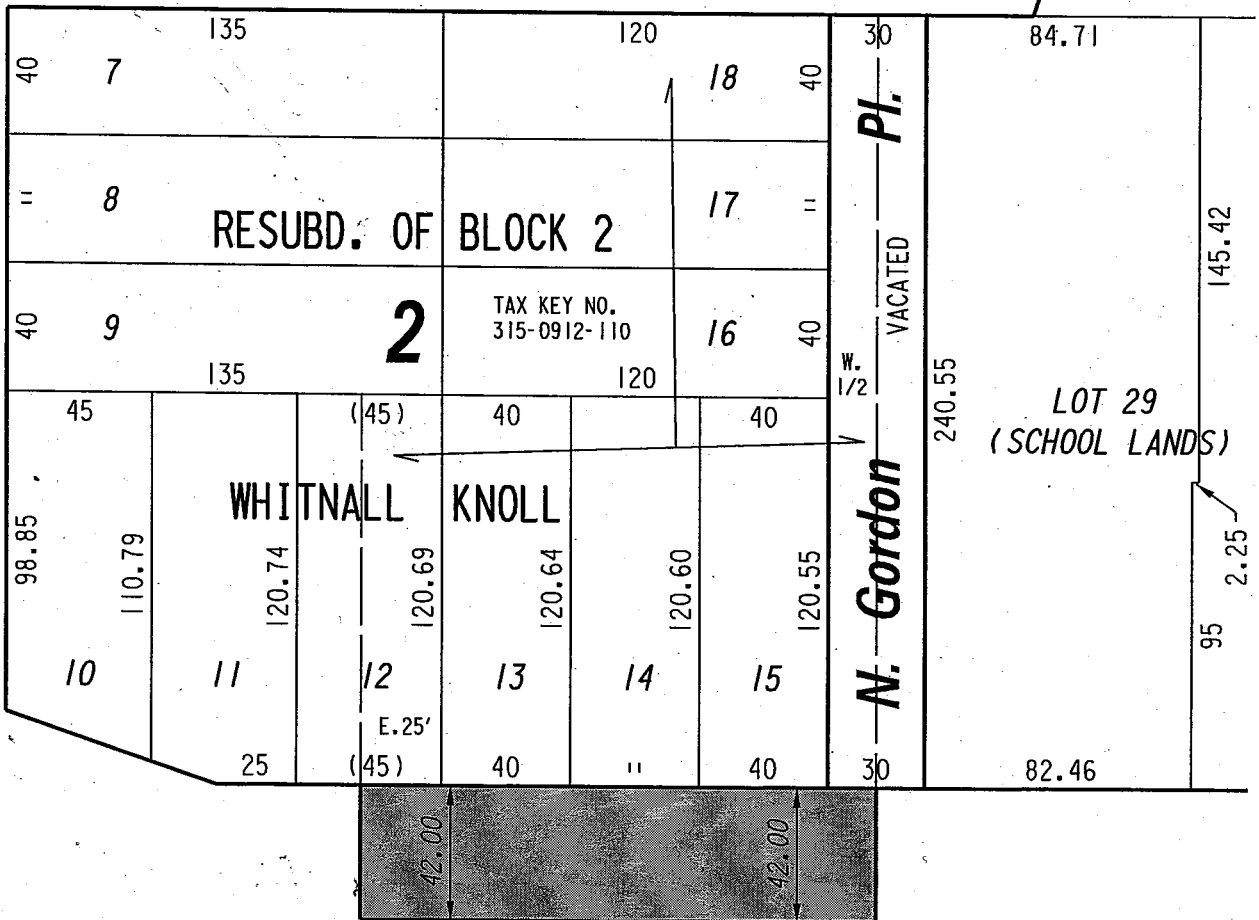
N.E. 1/4 SEC. 16, T.7N., R.22E.

315



**E. Roadmeet St.** (40' R.O.W.)

**N. Dousman St.** (60' R.O.W.)



**E. Locust St.** (120' R.O.W.)

 PORTION OF PUBLIC STREET PROPOSED TO BE VACATED

**EXHIBIT "A"**  
**FILE NO. 010546**

**INFRASTRUCTURE SERVICES DIVISION**

MILWAUKEE, WISCONSIN

ASSIGNED TO: W.E. FUCHS

CH'K'D. BY: M.C. WILLIAMS

DRAWN BY: W.E.F.

DATE: SEPT. 4, 2001

PROJECT/GRANT NO.: WK52337139

SCALE: 1" = 60'

APPROVED BY:

*Marcia Lindholm*

*Jeffrey Blumke*

CENTRAL DRAFTING & RECORDS MANAGER

CITY ENGINEER