

## TDI ASSOCIATES, INC.

ARCHITECTS • ENGINEERS • PLANNERS

EMPLOYEE OWNED

---

NB W22350 JOHNSON DR. SUITE B4 WAUKESHA, WISCONSIN 53186 PHONE 262/437-0400 FAX 262/437-0401

---

October 22, 2004

City of Milwaukee  
Attn.: John Hyslop  
809 N. Broadway, 2<sup>nd</sup> Floor  
Dept. of City Development  
Milwaukee, WI 53202

Re: The Sterling  
1801 N. Farwell  
TDI Project #98340

Dear John Hyslop,

We are requesting a minor modification to our planned development at The Sterling.

As the project is progressing, we are working on some of the smaller issues that haven't been addressed as of yet. The issue at hand is the placement of two WEPCO transformers and a generator.

Per City of Milwaukee, District Standards - 295-811 UTILITIES; we initially attempted to locate the equipment within the building. If we had done so, the equipment would have reduced the number of available public parking spaces. The city has required that this project provide seventy public parking stalls. Therefore, not to reduce the public or private parking, the next available option is to place the equipment on the exterior of the building.

With the city's approval, we would like to place the two transformers, and a generator along the West elevation. The West elevation is set back from the property line four feet. This four foot wide "exterior zone", is adjacent to an alley. The equipment is wider than four feet, and will not fit within the "exterior zone". As a result, we would like to recess a small area along the West elevation. This will allow the clearances to keep all the equipment within the property boundaries.

The two transformers will be sitting on a concrete pad, flush with grade, at the Southwest corner of the building. The transformers will be screened from view with a decorative metal or vinyl fence, per 295-811 SCREENING.

North of the transformers, the generator will be also sitting on a concrete pad, but will be elevated from grade approximately five feet. Directly beneath the elevated pad is an inclining pre-cast beam supporting the interior-parking ramp. So the generator pad does not interfere with the pre-cast beam, the pad will be raised to a height just above the beam. The generator will also be screened from view with a decorative metal or vinyl fence to match the transformer screening.

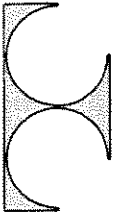
Attached are original drawings, and proposed drawings showing our intentions. Also attached are pictures showing the alley as it is today.

Thank You,

A handwritten signature in black ink, appearing to read "Jerry Mortier", with a long horizontal flourish extending to the right.

Jerry Mortier  
TDI Associates.





**TDL ASSOCIATES, INC.**  
ARCHITECTS, ENGINEERS, PLANNERS

18 W22500 JOHNSON DRIVE, SUITE 114  
MILWAUKEE, WISCONSIN 53227  
PHONE 362-437-8488 FAX 362-437-0481

**THE STERLING**  
FARWELL & ROYAL  
MILWAUKEE, WISCONSIN

**TDL ASSOCIATES, INC.**  
All Rights Reserved  
**OWNERSHIP OF DOCUMENTS**  
This document, and the ideas and design incorporated herein, are an instrument of professional service, a work product of TDL Associates, Inc. and shall remain the property of TDL Associates, Inc. for any other project or purpose without the expressed written authorization of TDL Associates, Inc.

Sheet Title  
**PROPOSED  
PLAN**

Issued For: \_\_\_\_\_ Date: \_\_\_\_\_

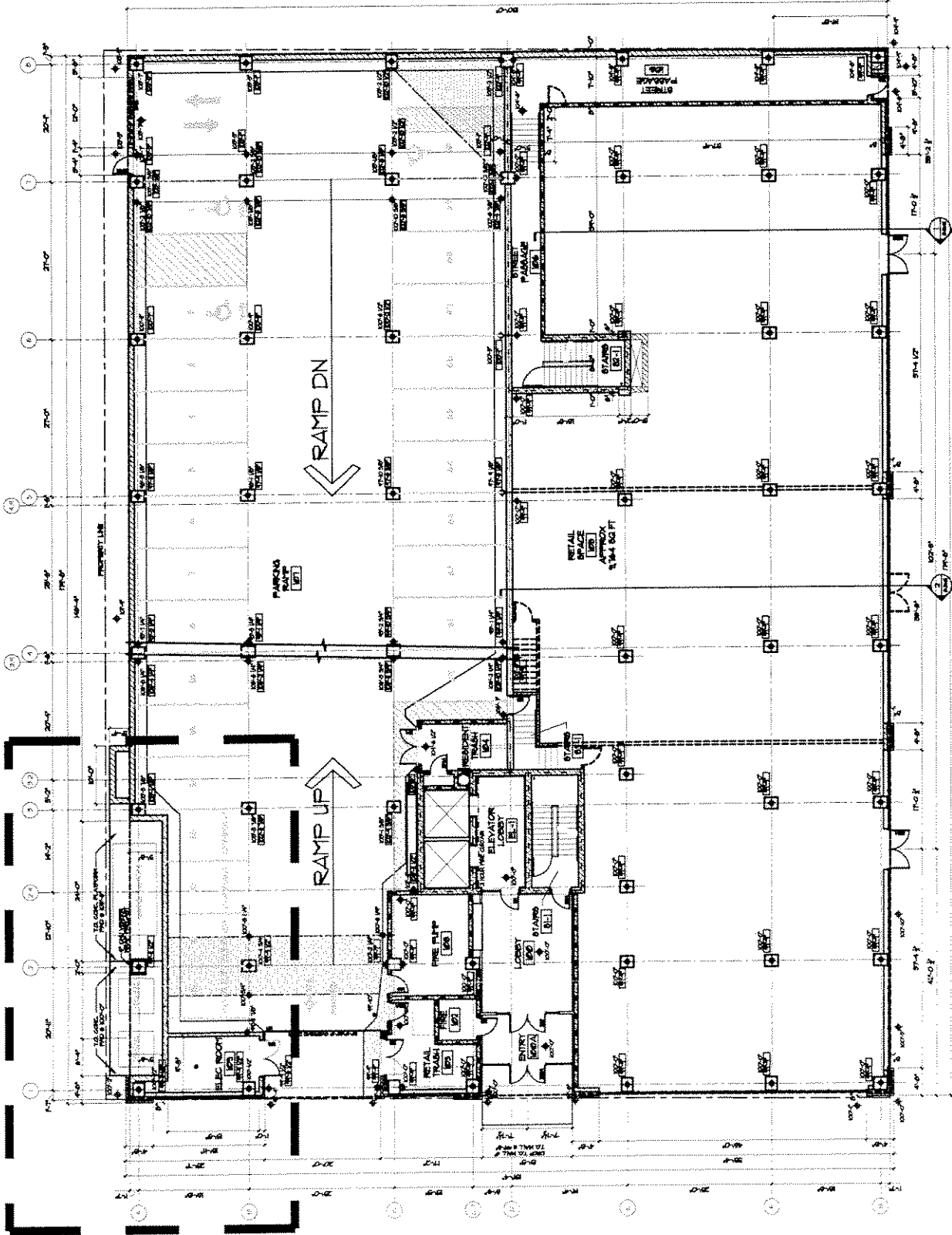
Date: 11/1/08

Job No.: 08-340

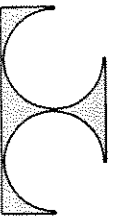
Drawn By: JPT

Sheet No.

**A103**



1 FIRST FLOOR PLAN  
1/8" = 1'-0"



**TDI ASSOCIATES, INC.**  
ARCHITECTS, ENGINEERS, PLANNERS

NR W22140 JOHNSON DRIVE, SUITE 104  
WALKERSHA, WISCONSIN 53186  
PHONE: 262.437.0000 FAX: 262.437.0001

**THE STERLING**  
**FARWELL & ROYAL**  
MILWAUKEE, WISCONSIN

**TDI ASSOCIATES, INC.**  
All Rights Reserved

**OWNERSHIP OF DOCUMENTS**  
This document, and the ideas and  
design incorporated herein, are the  
property of TDI Associates, Inc. and  
shall remain the property of TDI Associates,  
Inc. and is not to be used in whole or  
in part for any other project or purpose  
without the expressed written  
authorization of TDI Associates, Inc.

Sheet Title  
**GROUND  
FLOOR**

Issued For: \_\_\_\_\_ Date: \_\_\_\_\_

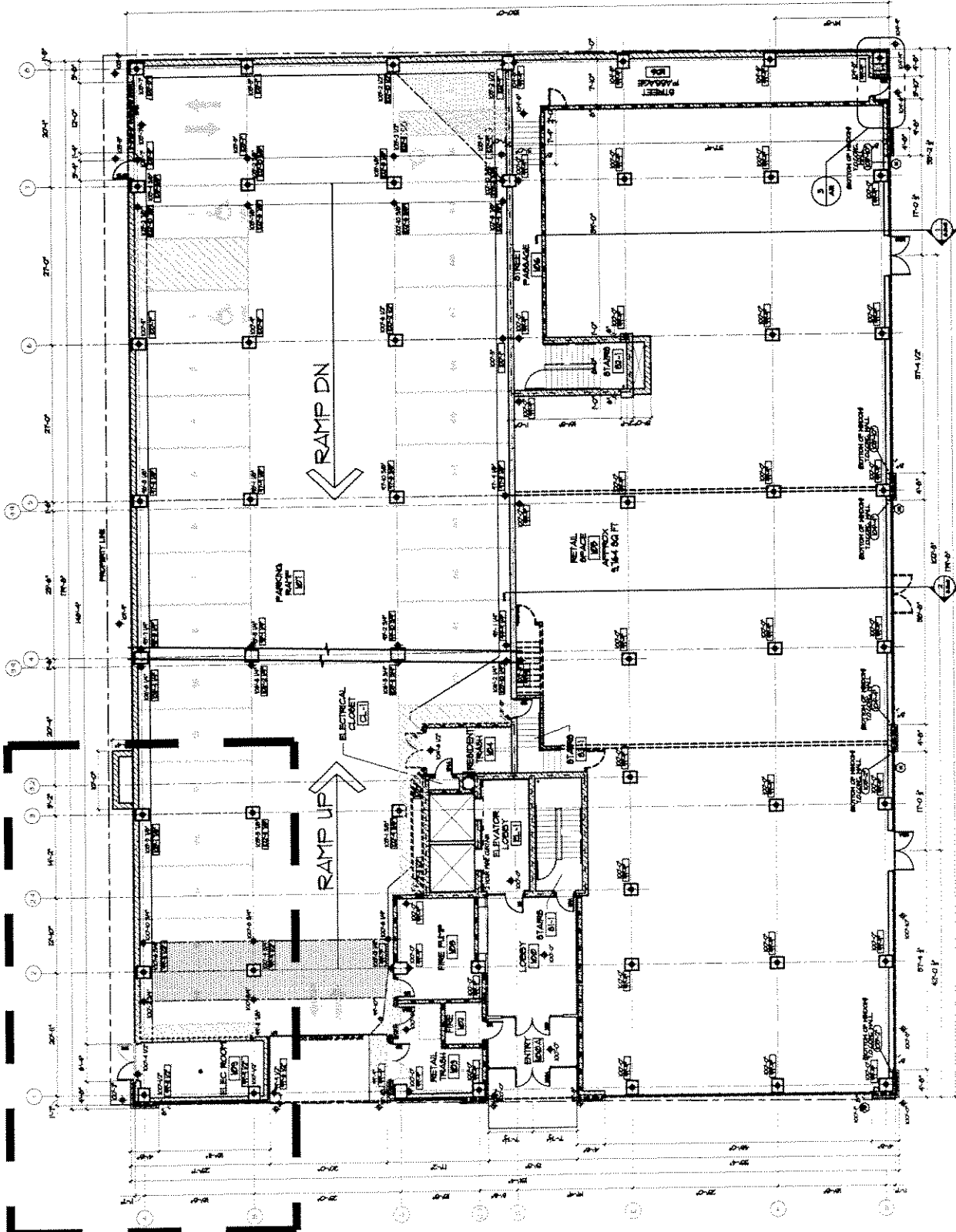
Date: 1/10/06

Job No.: 08-340

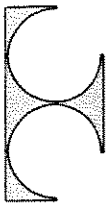
Drawn By: JM

Sheet No.

**A103**



**1 FIRST FLOOR PLAN**  
1/8" = 1'-0"



**TDI ASSOCIATES, INC.**  
ARCHITECTS, ENGINEERS, PLANNERS

58 W2150 JOHNSON DRIVE, SUITE 104  
WALKAESHA, WISCONSIN 53191  
PHONE: 262-437-0400 FAX: 262-437-0401

**THE STERLING**  
FARMELL & ROYAL  
MILWAUKEE, WISCONSIN

**TDI ASSOCIATES, INC.**  
All Rights Reserved

**OWNERSHIP OF DOCUMENTS**  
This document, and the ideas and design incorporated herein, as an instrument of professional service, is the property of TDI Associates, Inc., and is not to be used in whole or in part for any other project or purpose without the expressed written authorization of TDI Associates, Inc.

Sheet Title  
**ORIGINAL ELEVATION**

Issued For: \_\_\_\_\_ Date: \_\_\_\_\_

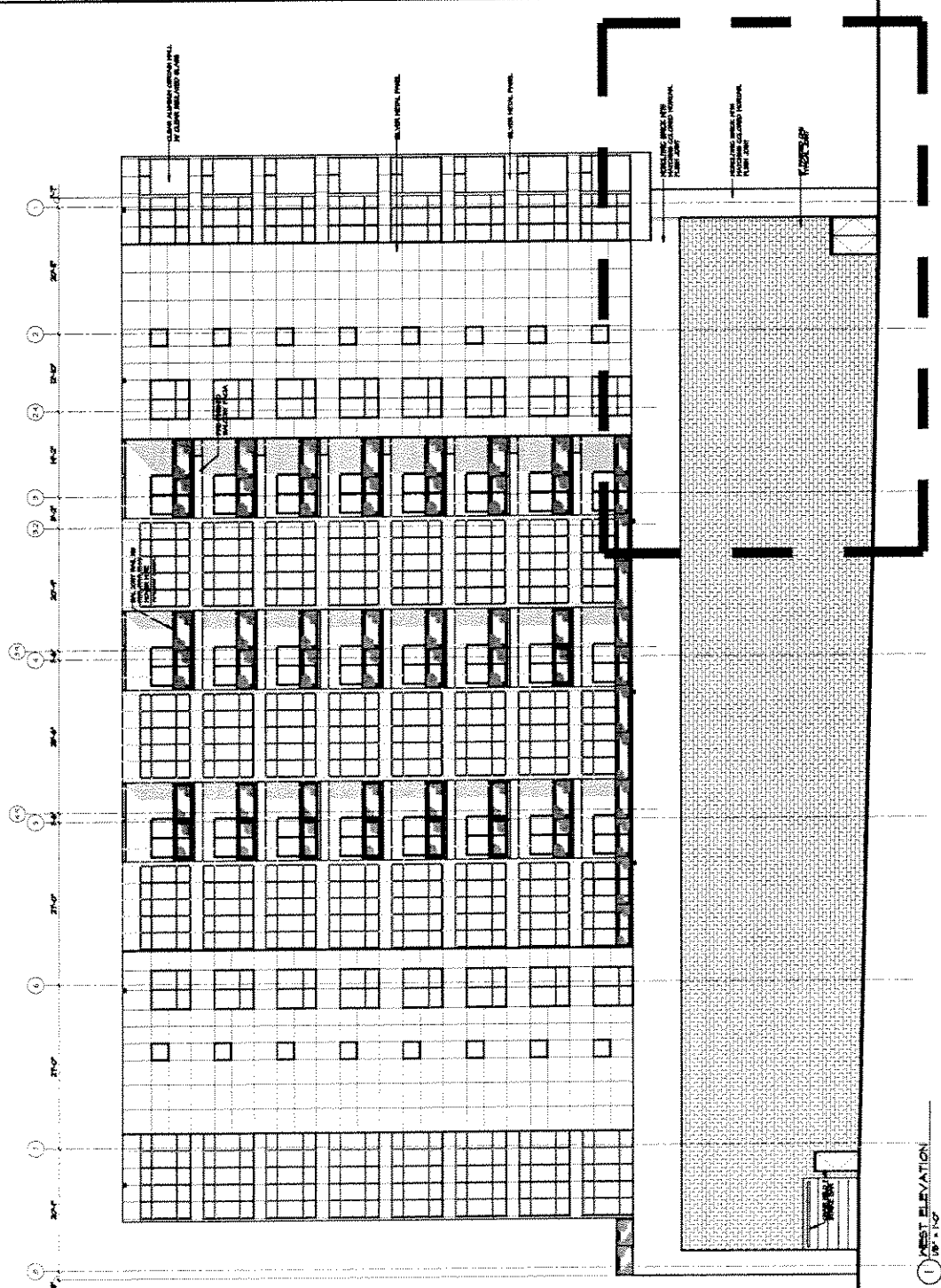
Date: **12/28/08**

Job No.: **98-340**

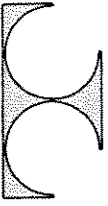
Drawn By: **JM**

Sheet No.

**A203**



1 WEST ELEVATION  
1/8" = 1'-0"



**TDI ASSOCIATES, INC.**  
ARCHITECTS, ENGINEERS, PLANNERS

58 W2150 JOHNSON DRIVE, SUITE 04  
MILWAUKEE, WISCONSIN 53225  
PHONE: 762-437-0400 FAX: 762-437-0401

**THE STERLING**

**FARMWELL & ROYAL**  
MILWAUKEE, WISCONSIN

**TDI ASSOCIATES, INC.**  
All Rights Reserved

**OWNERSHIP OF DOCUMENTS**  
This document, and the ideas and design incorporated herein, is the sole property of TDI Associates, Inc. and is not to be used, in whole or in part for any other project or purpose without the expressed written authorization of TDI Associates, Inc.

Sheet Title  
**PROPOSED  
ELEVATION**

Issued For: \_\_\_\_\_ Date: \_\_\_\_\_

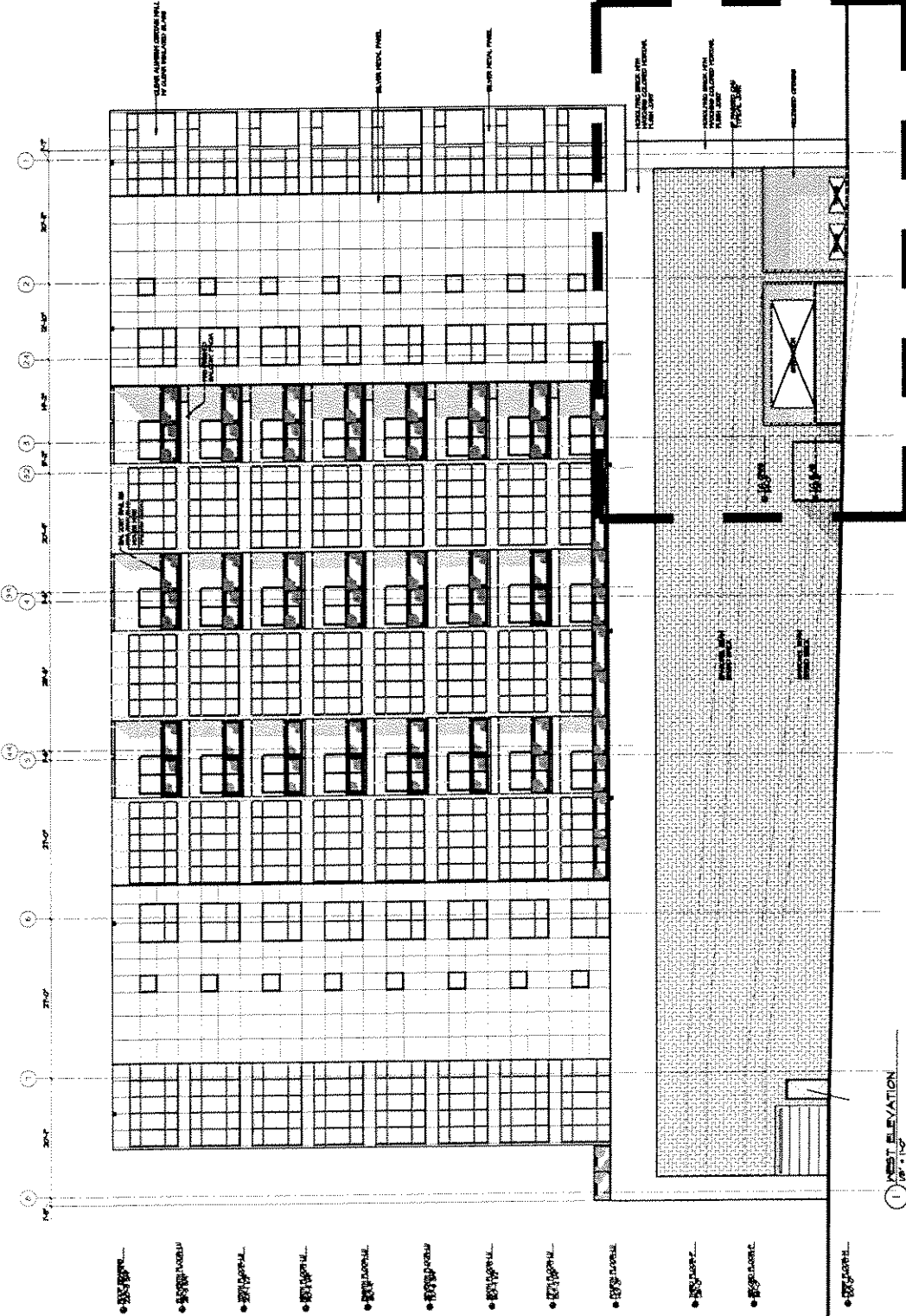
Date: **12/25/08**

Job No.: **98-540**

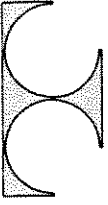
Drawn By: **JM**

Sheet No.

**A203**



- 100% COMPLETE
- 90% COMPLETE
- 80% COMPLETE
- 70% COMPLETE
- 60% COMPLETE
- 50% COMPLETE
- 40% COMPLETE
- 30% COMPLETE
- 20% COMPLETE
- 10% COMPLETE
- 0% COMPLETE



**TDI ASSOCIATES, INC.**  
ARCHITECTS, ENGINEERS, PLANNERS

88 W2159 JOHNSON DRIVE, SUITE B4  
WALKESHA, WISCONSIN 53188  
PHONE: 262-437-0487 FAX: 262-437-0481

**THE STERLING**

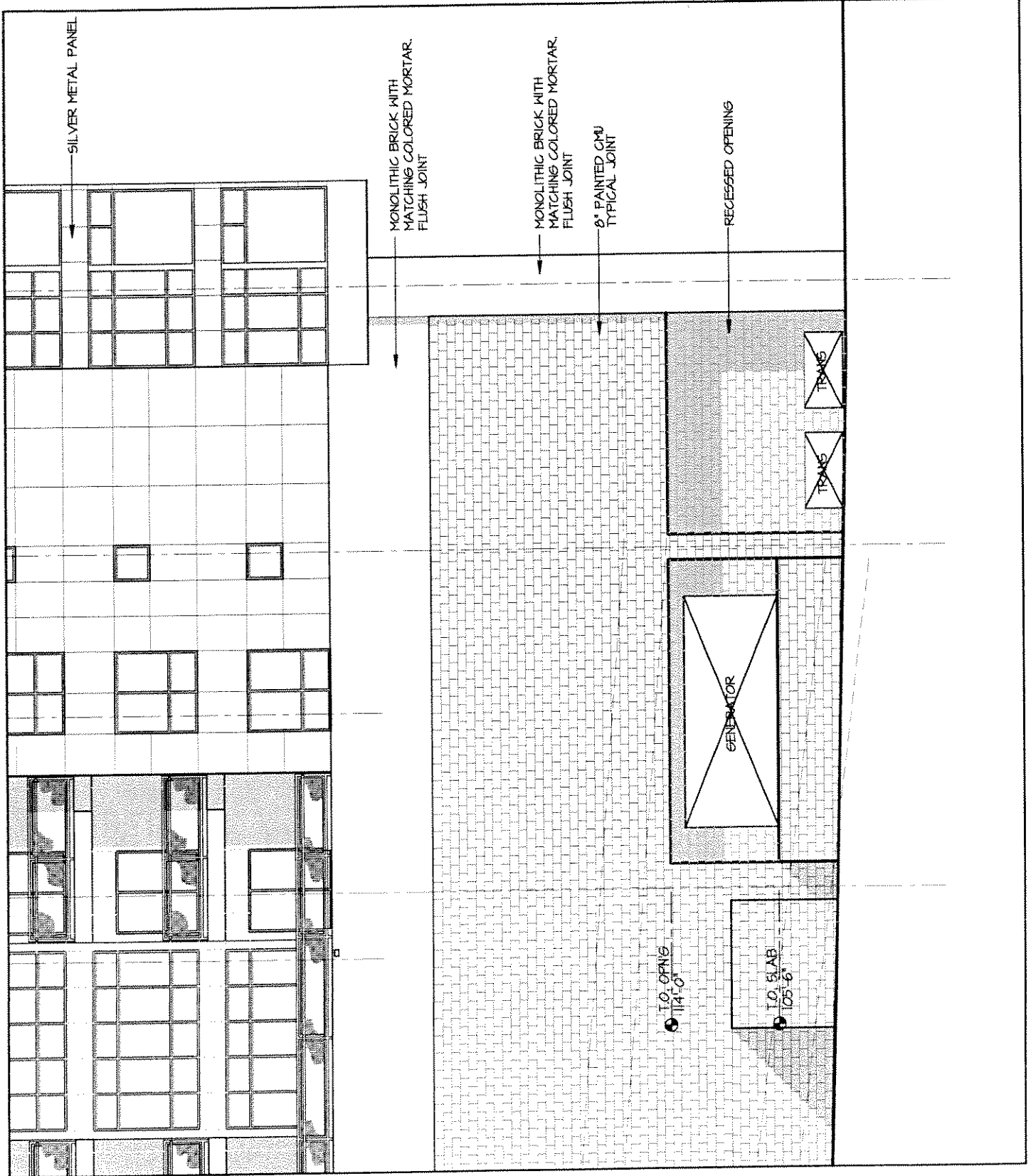
THARWELL & ROYAL  
MILWAUKEE, WISCONSIN

TDI ASSOCIATES, INC.  
All Rights Reserved

**OWNERSHIP OF DOCUMENTS**  
This document, and the ideas and design incorporated herein, as an instrument of professional service, is the sole property of TDI Associates, Inc. and shall remain the property of TDI Associates, Inc. in part for any other project or purpose without the expressed written authorization of TDI Associates, Inc.

Sheet Title  
**ENLARGED  
ELEVATION**  
Issued For: \_\_\_\_\_ Date: \_\_\_\_\_

Date: 12/28/08  
Job NO.: 08-340  
Drawn By: JFJ  
Sheet No. A203







**TDI ASSOCIATES, INC.**  
ARCHITECTS, ENGINEERS, PLANNERS

5812250 DORNSON LORDE, SUITE 104  
WAUKESHA, WISCONSIN 53186  
PHONE 262-437-0400 FAX 262-437-0401

FARMWELL & ROYAL  
MILWAUKEE, WISCONSIN

**THE STERLING**

TDI ASSOCIATES, INC.  
All Rights Reserved

**OWNERSHIP OF DOCUMENTS**  
This document and the ideas and design concepts contained herein are the sole property of TDI Associates, Inc., and it is not to be used in whole or in part for any other project or purpose without the expressed written authorization of TDI Associates, Inc.

Sheet Title  
**SITE**

Issued For: \_\_\_\_\_ Date: \_\_\_\_\_

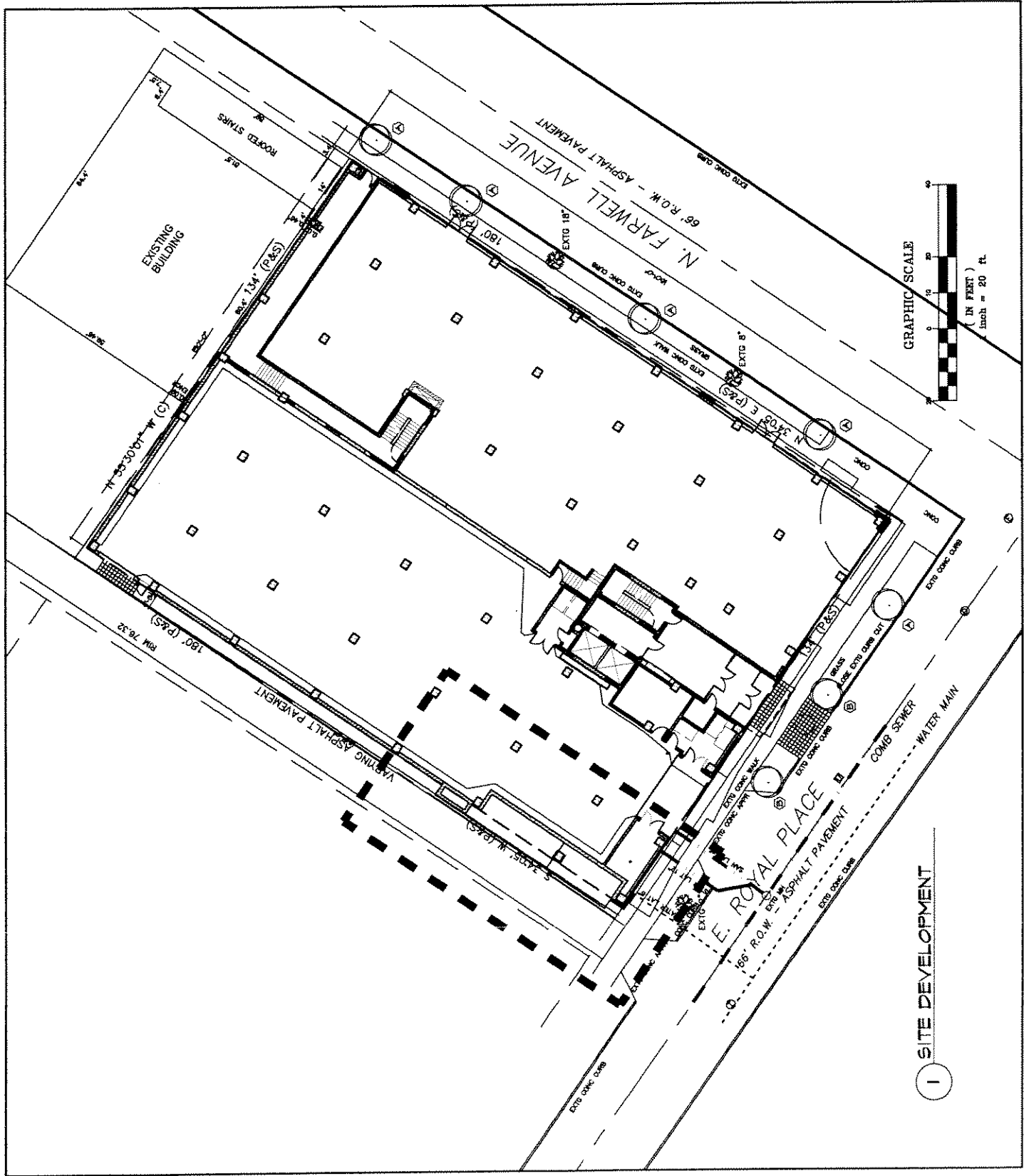
Date: 12/28/08

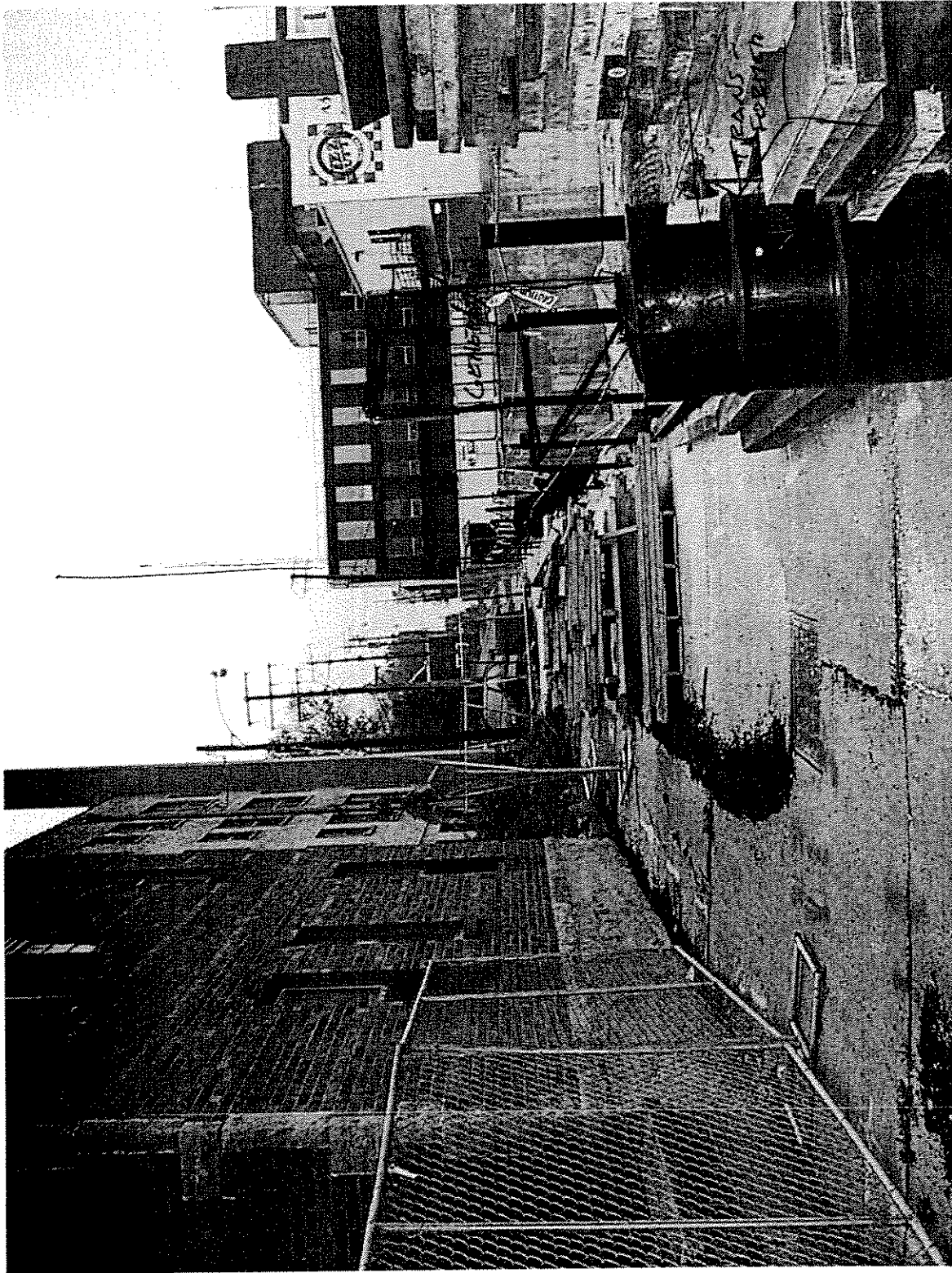
Job No.: 08-040

Drawn By: JH

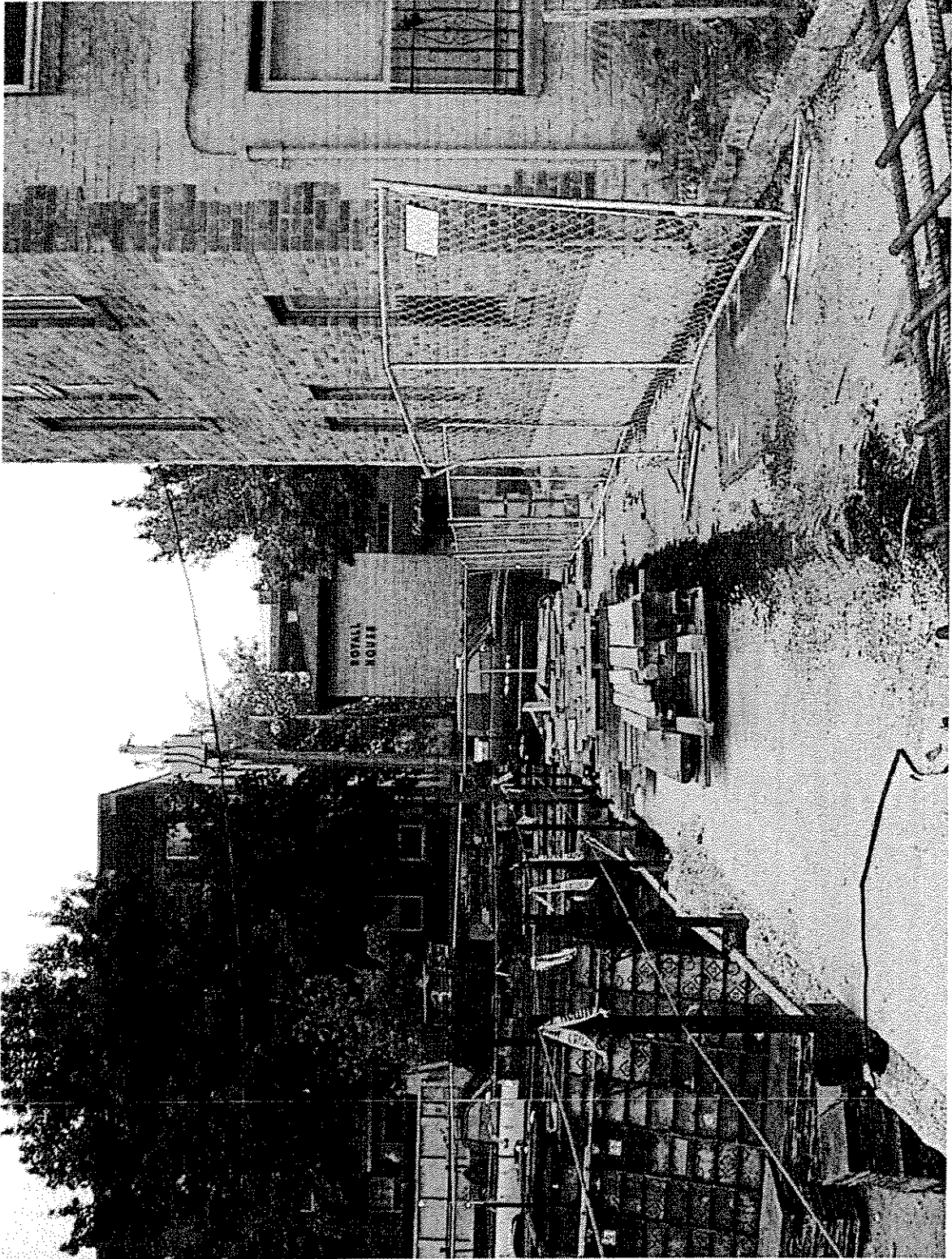
Sheet No.

**C-1**





ALLEY LOOKING NORTH



ALLEY LOOKING SOUTH



LOOKING WEST FROM SITE