

353

354

N.W. 1/4 SEC. 21, T.7N., R.22E.

N.E. 1/4 SEC. 20, T.7N., R.22E.

E. Lloyd St.

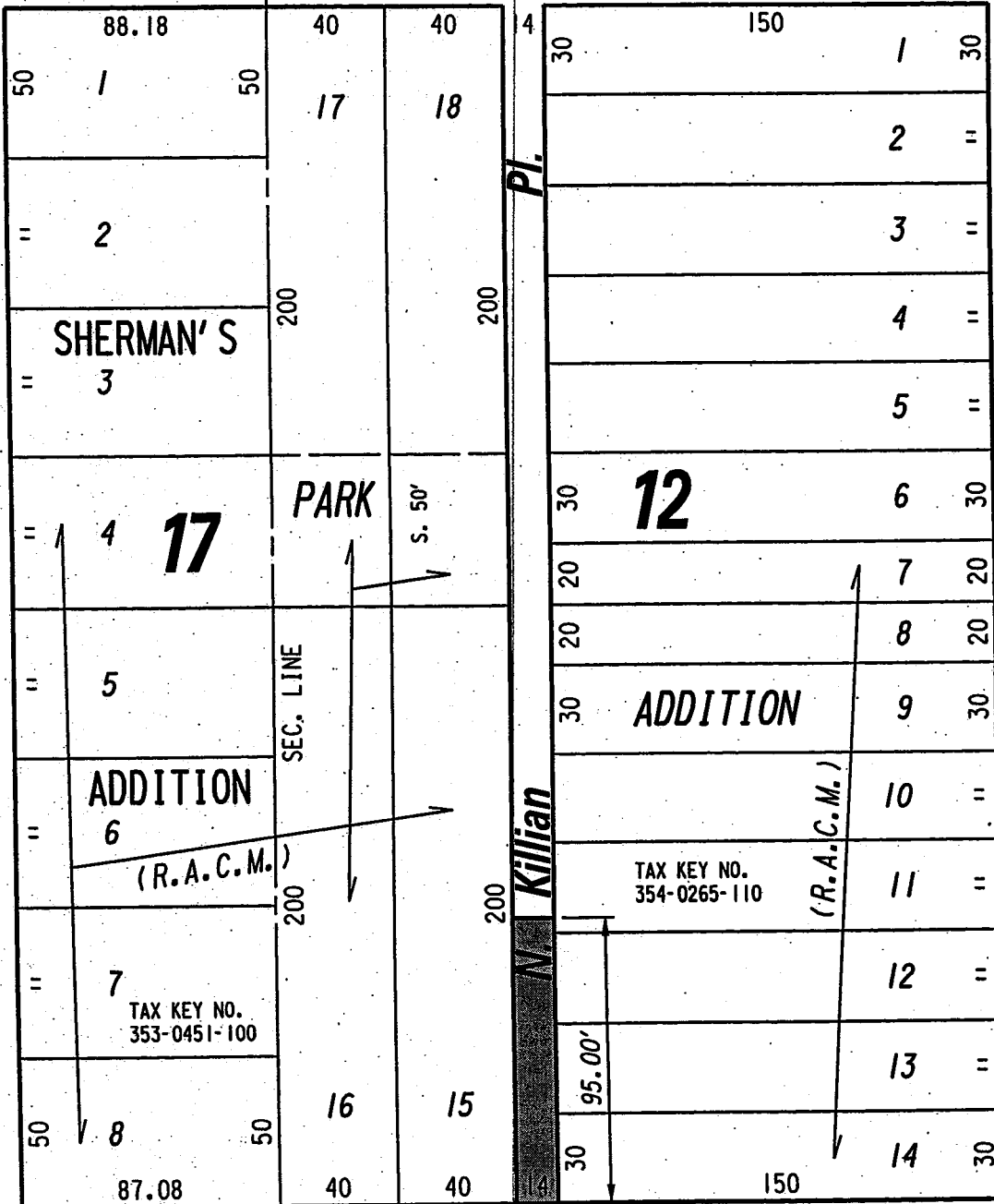
(80' R.O.W.)

St.

St.

(70' R.O.W.)

N. Hubbard



E. Brown St.

(80' R.O.W.)

St.

St.

(70' R.O.W.)

N. Buffum



PORTION OF PUBLIC STREET PROPOSED TO BE VACATED

EXHIBIT "A"

FILE NO. 010063

INFRASTRUCTURE SERVICES DIVISION

MILWAUKEE, WISCONSIN

ASSIGNED TO: W.E. FUCHS

CH'K'D. BY: M.C. WILLIAMS

DRAWN BY: W.E.F.

DATE: MAY 22, 2001

PROJECT/GRANT NO.: WK52337130

SCALE: 1" = 60'

APPROVED BY:

*Maria Lindholm*  
CENTRAL DRAFTING & RECORDS MANAGER

*Jeffrey Blumke*  
CITY ENGINEER