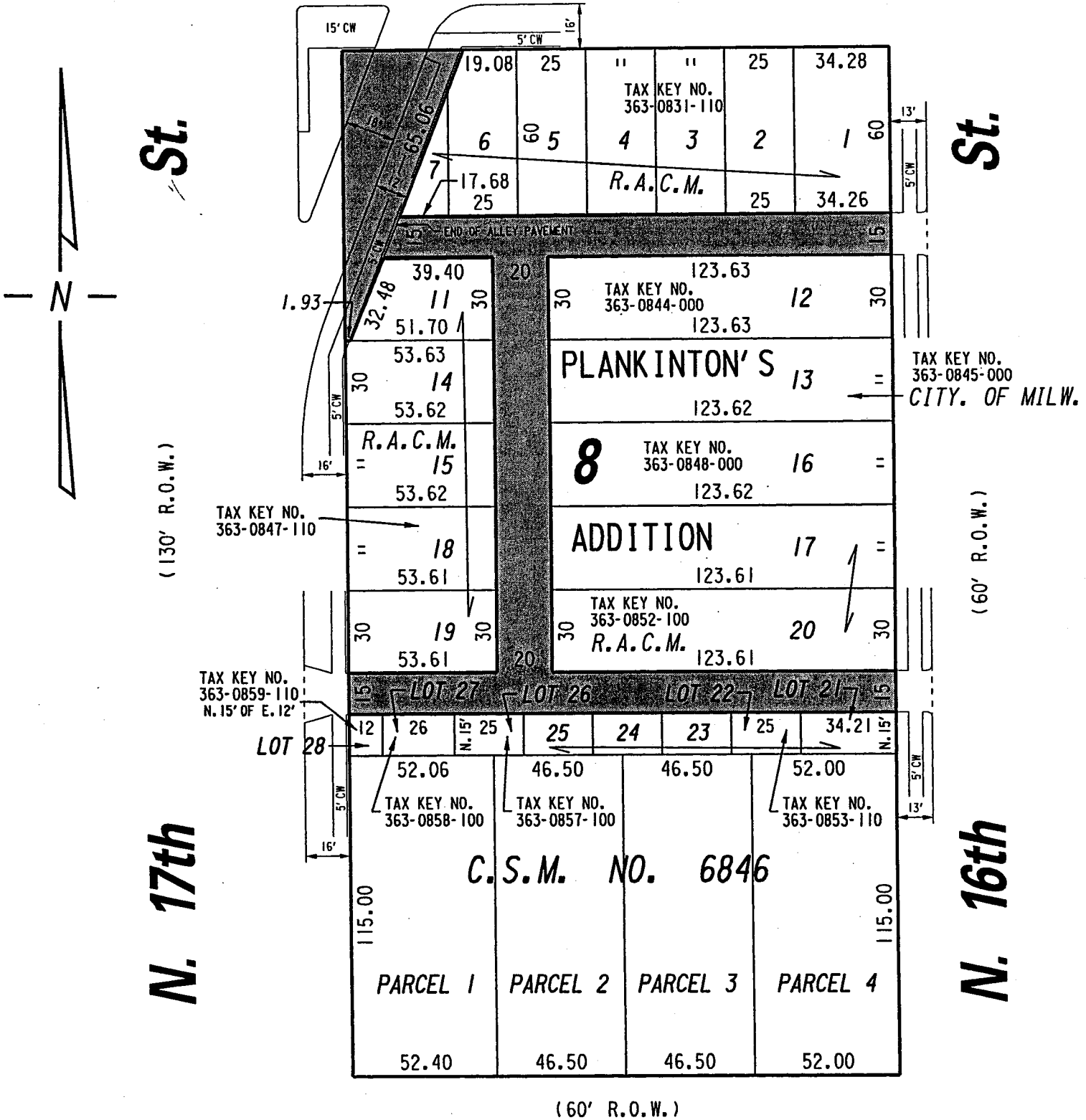


W. Walnut St.

(130' R.O.W.)



W. Galena St.

EXHIBIT "A" FILE NO. 030134

INFRASTRUCTURE SERVICES DIVISION MILWAUKEE, WISCONSIN

ASSIGNED TO: W.E. FUCHS
 DRAWN BY: W.E.F.
 PROJECT/GRANT NO.: WK52337181
 APPROVED BY:

CH'K'D. BY: M.C. WILLIAMS
 DATE: MAY 30, 2003
 SCALE: 1" = 50'

Marcia Lindholm
 CENTRAL DRAFTING & RECORDS MANAGER

John Plunk
 CITY ENGINEER



PORTIONS OF PUBLIC
 STREET AND ALLEYS
 PROPOSED TO BE
 VACATED