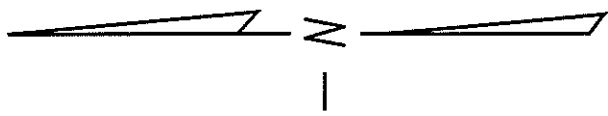


363

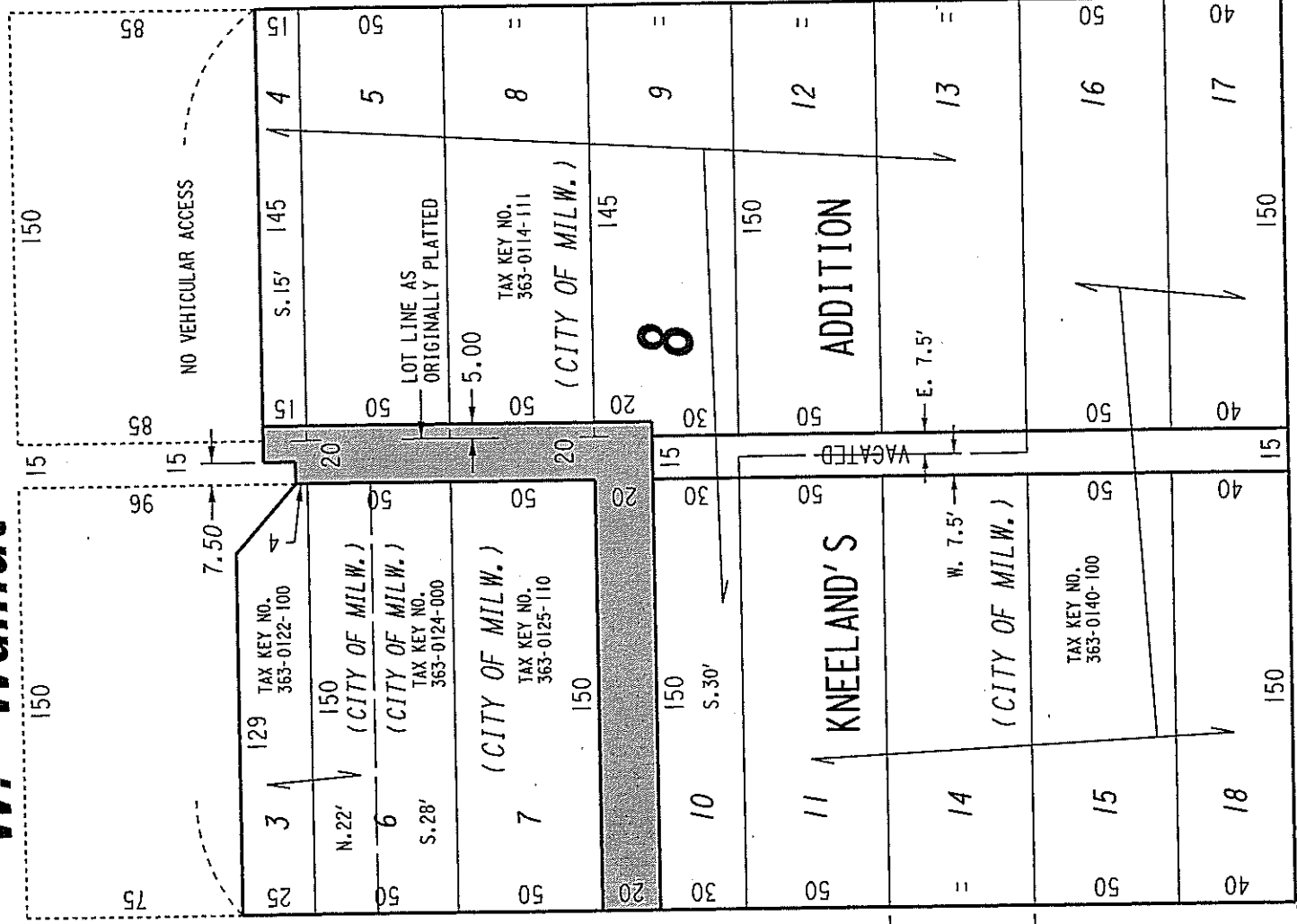
S.E. 1/4 SEC. 19, T.7N., R.22E.



W. Walnut St.

St.

(R.O.W. VARIES)



St.

St.

(60' R.O.W.)

(60' R.O.W.)

NO VEHICULAR ACCESS

N. 14th

N. 13th

W. Galena St.

St.

(60' R.O.W.)

PUBLIC ALLEYS PROPOSED TO BE VACATED

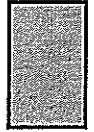


EXHIBIT "A"
 FILE NO. 071678
 INFRASTRUCTURE SERVICES DIVISION
 MILWAUKEE, WISCONSIN

ASSIGNED TO: W.E. FUCHS
 DRAWN BY: W.E.F.
 PROJECT/GRANT NO.: WK52337263
 APPROVED BY:

CH'K'D. BY: W.E. FUCHS
 DATE: APRIL 23, 2008
 SCALE: 1" = 60'

maria Lindholm
 CENTRAL DRAFTING & RECORDS MANAGER

W.E. Fuchs
 CIVIL ENGINEER