

**Project Application for 2008-2011 HIGHWAY SAFETY IMPROVEMENT PROGRAM**

DESIGN ID:	TIED PROJECT IDs:
RELATED ID(s): (R/W) (CONST)	

**Project Description**

1. NAME OF ROAD/INTERSECTION <i>13 Intersections Citywide</i>		HWY NO.
COUNTY <i>Milwaukee</i>	CITY OF <i>Milwaukee</i>	TOWN OF
NAME OF THE MPO THE PROJECT IS REPRESENTED BY <i>SEWRPC</i>		

Is the estimated cost of the project less than \$25,000?  Yes  No  
 If YES, be sure to complete Box 6 in addition to the rest of this form.

2A. SEGMENT Current Average Daily Traffic	Project Length Miles
Roadway Width	Crash Rate Shoulder Width

2B. INTERSECTIONS	Crash Rate	Entering Vehicle Volume
<i>W. Burleigh St. and N. 27<sup>th</sup> St.</i>	<i>1.46</i>	<i>30,695</i>
<i>W. Burnham St. and S. Layton Blvd.</i>	<i>0.83</i>	<i>38,557</i>
<i>W. Center St. and N. 27<sup>th</sup> St.</i>	<i>1.31</i>	<i>32,487</i>
<i>W. Clybourn St. and N. Water St.</i>	<i>1.03</i>	<i>32,579</i>
<i>W. Congress St. and N. 76<sup>th</sup> St. (STH 181)</i>	<i>0.78</i>	<i>30,631</i>
<i>N. Dr. MLK Dr. and W. Locust St.</i>	<i>1.29</i>	<i>41,152</i>
<i>W. Hampton Av. and N. 68<sup>th</sup> St.</i>	<i>1.64</i>	<i>24,573</i>
<i>W. Lapham Blvd. and S. 2<sup>nd</sup> St.</i>	<i>1.46</i>	<i>11,212</i>
<i>W. North Av. and N. Teutonia Av.</i>	<i>1.25</i>	<i>27,427</i>
<i>N. Sherman Blvd. and W. Villard St.</i>	<i>1.03</i>	<i>32,708</i>
<i>W. Vliet St. and N. 27<sup>th</sup> St.</i>	<i>0.91</i>	<i>32,032</i>
<i>W. Wells St. and N. 17<sup>th</sup> St.</i>	<i>0.96</i>	<i>16,368</i>
<i>W. Wells St. and N. 35<sup>th</sup> St. (USH 18)</i>	<i>0.99</i>	<i>26,366</i>

**Identification of Hazard**

2C. Explain identified hazards such as: Visibility Restrictions, Curves, Hills, Intersection Problems, Bike/Ped Conflicts, Narrow Shoulders, Rutting, Etc.

*Thirteen intersections were identified as having a high number of rear-end and disregard of signal crashes. At these intersections, approaches with high numbers of disregards and rear-end crashes were identified for the installation of overhead mast arms, additional near-left housings on median-divided roadways, and larger 12" far right signal housings.*

**Proposed Improvement**

3. In some detail, describe the proposed project and how it will address the identified hazard.

**Burleigh and 27<sup>th</sup>:** *To improve visibility, overhead mast arms will be installed in all four directions and the far right 12" signal housings will be relocated at an estimated cost of \$22,000.*

**Burnham and Layton Blvd.:** *To improve visibility, overhead mast arms with 12" signal housings will be installed in all four directions at an estimated cost of \$27,000.*

**Center and 27<sup>th</sup>:** *To improve visibility, overhead mast arms with 12" signal housings will be installed in*

the westbound and southbound directions at an estimated cost of \$14,000.

**Clybourn and Water:** To improve visibility, an overhead mast arm with a 12" signal housing will be installed in the westbound direction at an estimated cost of \$8,000.

**Congress and 76<sup>th</sup>:** To improve visibility, an overhead mast arm with a 12" signal housing will be installed in the northbound direction and far right 12" signal housings will be installed in the eastbound, westbound, and southbound directions at an estimated cost of \$8,000.

**Dr. MLK Dr. and W. Locust St.:** To improve visibility, overhead mast arms will be installed in all four directions and the far right 12" signal housings will be relocated at an estimated cost of \$16,000.

**Hampton and 68<sup>th</sup>:** To improve visibility, an overhead mast arm will be installed in the eastbound direction with the 12" signal housing relocated and near left 8" signal housings will be installed in eastbound, westbound, and northbound directions at a total estimated cost of \$8,000.

**Lapham and 2<sup>nd</sup>:** To improve visibility, an overhead mast arm with a 12" signal housing will be installed in the westbound direction, and far right 12" signal housings will be installed in the eastbound, northbound, and southbound directions at an estimated cost of \$8,000.

**North and Teutonia:** To improve visibility, overhead mast arms with 12" signal housings will be and painted left turn lanes will be installed in all four directions at an estimated cost of \$15,000.

**Sherman Blvd. and Villard:** To improve visibility, an overhead mast arm will be installed in the southbound direction with the 12" signal housing will be relocated and near left 8" signal housings will be installed in the northbound and southbound directions at a total estimated cost of \$7,000.

**Vliet and 27<sup>th</sup>:** To improve visibility, an overhead mast arm with a 12" signal housing will be installed in the northbound direction and far right 12" signal housings will be installed in the southbound, eastbound, and westbound directions at a total estimated cost of \$8,000.

**Wells and 17<sup>th</sup>:** To improve visibility, an overhead mast arm will be installed in the eastbound direction with the 12" signal housing relocated at an estimated cost of \$8,000.

**Wells and 35<sup>th</sup>:** To improve visibility, an overhead mast arm with a 12" signal housings will be installed in the northbound direction and an overhead mast arm will be installed in the southbound direction with the 12" signal housing relocated at an estimated cost of \$15,000.

### Project Cost

4. Estimate project costs in today's dollars)	FY 2008	FY 2009	FY 2010	FY 2011	HSIP Funds Requested
Preliminary Engineering-Design*: Include state review (-00)	\$8,200	\$8,200			\$16,400
Real Estate *					\$0
Major Construction Items (Include Construction Engineering and Contingencies) (-70)					\$0
Signals, Signs, and Street Lighting (-90)	\$73,800	\$73,800			\$147,600
** TOTAL	\$82,000	\$82,000			\$164,000

\* Ineligible cost for Small Local HSIP Project (less than \$25,000).

\*\* The project sponsors will be responsible for any project costs in excess of the approved project cost.

### Project Checklist

**Complete this box only for projects less than \$25,000:**

5. Will project affect or use land from a property on the National Register of Historic Places?

Yes  No

Will project require the use of any publicly-owned land from a public park, recreation area, or wildlife and waterfowl refuge?

Yes  No

Is your municipality adequately staffed and equipped to do the work?

Yes  No

Does your municipality have prior commitments that would impair your performance of this work?

Yes  No

### Contact Information and Signature

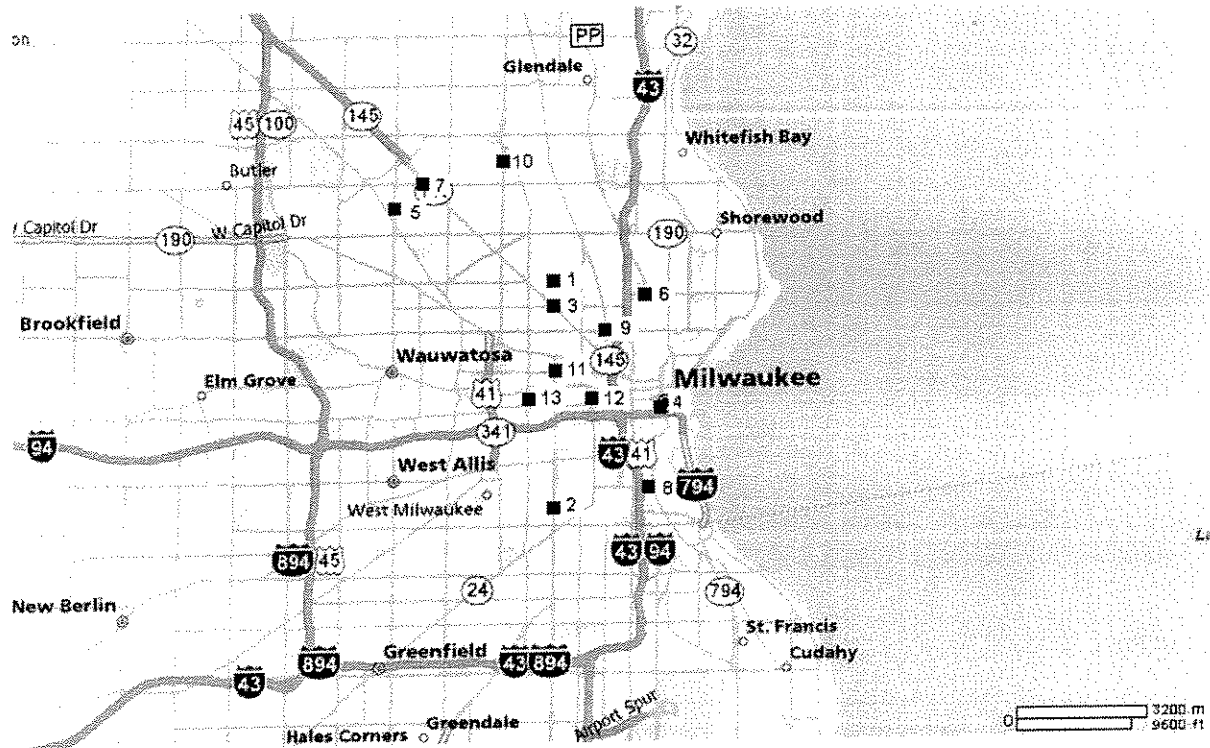
6. PRIMARY CONTACT PERSON or AGENCY		
NAME <i>Jeffrey S. Polenske, P.E.</i>	TITLE <i>City Engineer</i>	
ADDRESS <i>841 N. Broadway, Room 701</i>	TELEPHONE <i>(414) 286-2400</i>	
MUNICIPALITY <i>City of Milwaukee</i>	STATE <i>WI</i>	ZIP <i>53202</i>
7. SIGNATURE OF LOCAL APPROVING AUTHORITY		DATE

### WisDOT Information – Shaded areas to be completed by WisDOT staff only.

A. Environmental Documentation Type		B. Hazard Elimination Type	
C. PMSID	D. Functional Class	E. PEF	
REGION APPROVAL Project Supervisor		Date	
Planning Supervisor		Date	
C.O. Concurrence		Approved _____ Disapproved _____	
Approving Authority		Date	

REVISED 12/12/06

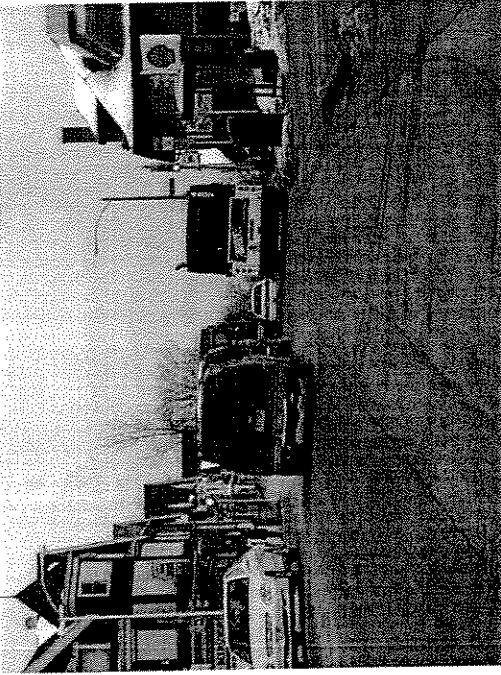
## PROJECT LOCATION MAP



1. W. Burleigh St. and N. 27<sup>th</sup> St.
2. W. Burnham St. and S. Layton Blvd.
3. W. Center St. and N. 27<sup>th</sup> St.
4. W. Clybourn St. and N. Water St.
5. W. Congress St. and N. 76<sup>th</sup> St. (STH 181)
6. N. Dr. MLK Dr. and W. Locust St.
7. W. Hampton Av. and N. 68<sup>th</sup> St.
8. W. Lapham Blvd. and S. 2<sup>nd</sup> St.
9. W. North Av. and N. Teutonia Av.
10. N. Sherman Blvd. and W. Villard Av.
11. W. Vliet St. and N. 27<sup>th</sup> St.
12. W. Wells St. and N. 17<sup>th</sup> St.
13. W. Wells St. and N. 35<sup>th</sup> St. (USH 18)

**INTERSECTION PICTURES  
13 INTERSECTIONS CITYWIDE**

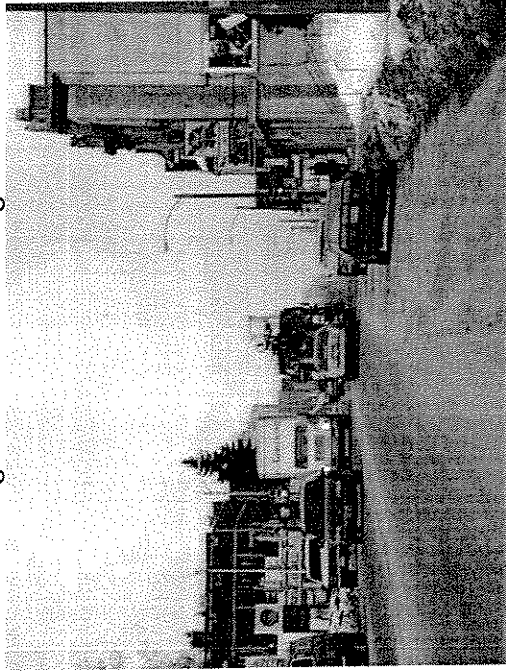
Burleigh and 27<sup>th</sup> – Facing East



Burleigh and 27<sup>th</sup> – Facing West



Burleigh and 27<sup>th</sup> – Facing North

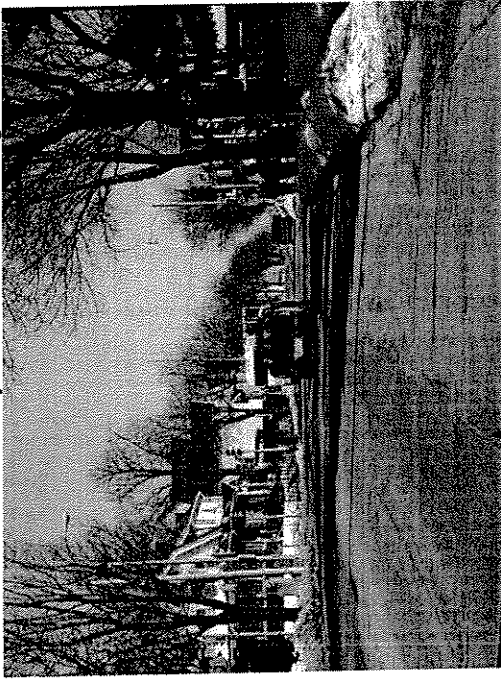


Burleigh and 27<sup>th</sup> – Facing South



**INTERSECTION PICTURES  
13 INTERSECTIONS CITYWIDE**

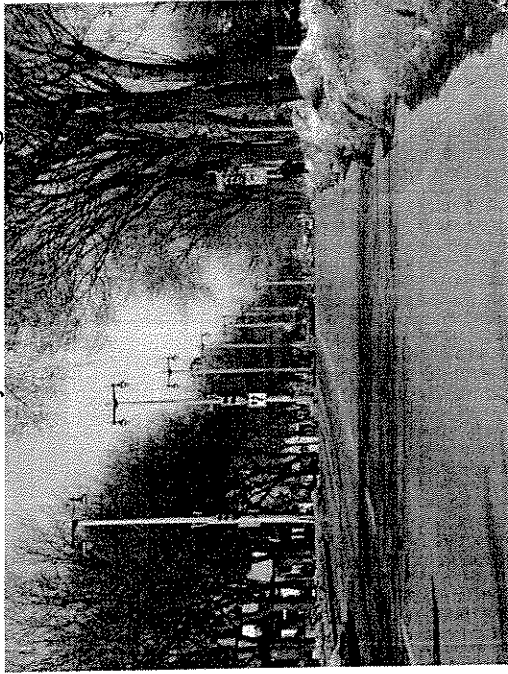
Burnham and Layton Blvd. – Facing East



Burnham and Layton Blvd. – Facing West



Burnham and Layton Blvd. – Facing North



Burnham and Layton Blvd. – Facing South

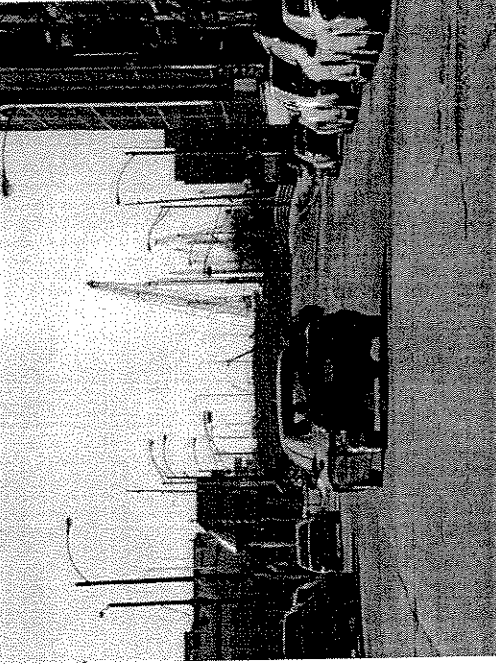


**INTERSECTION PICTURES  
13 INTERSECTIONS CITYWIDE**

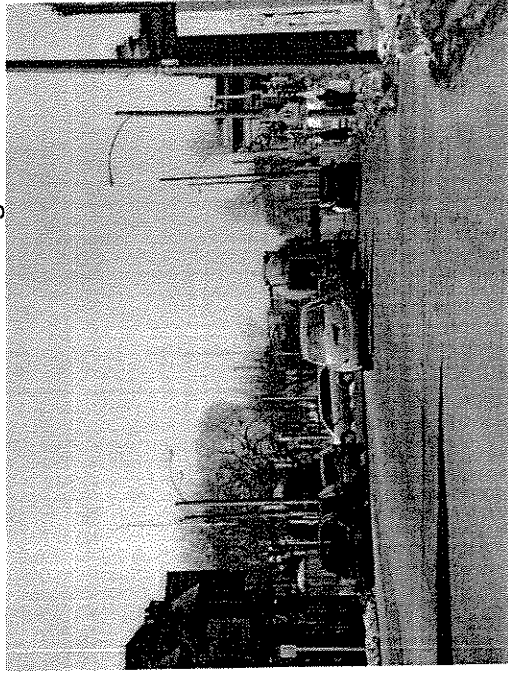
Center and 27<sup>th</sup> – Facing South



Clybourn and Water – Facing West

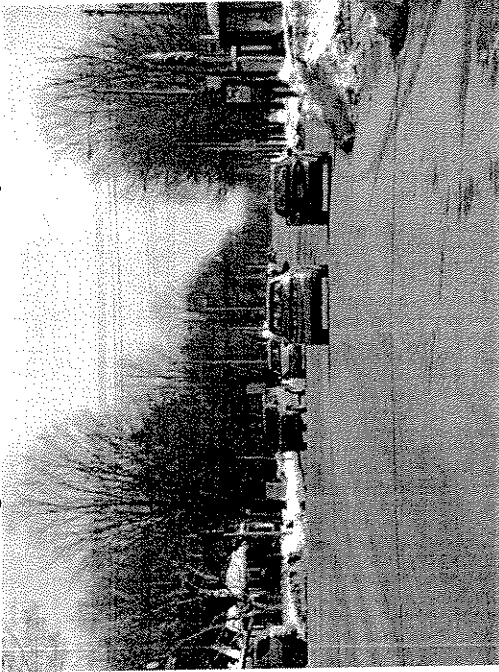


Center and 27<sup>th</sup> – Facing West

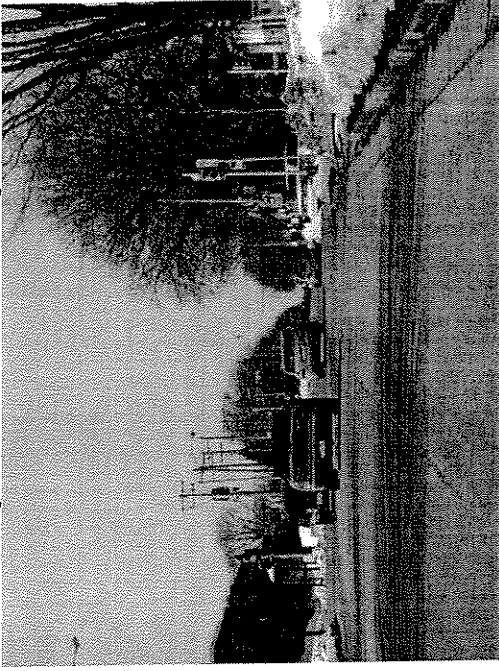


**INTERSECTION PICTURES  
13 INTERSECTIONS CITYWIDE**

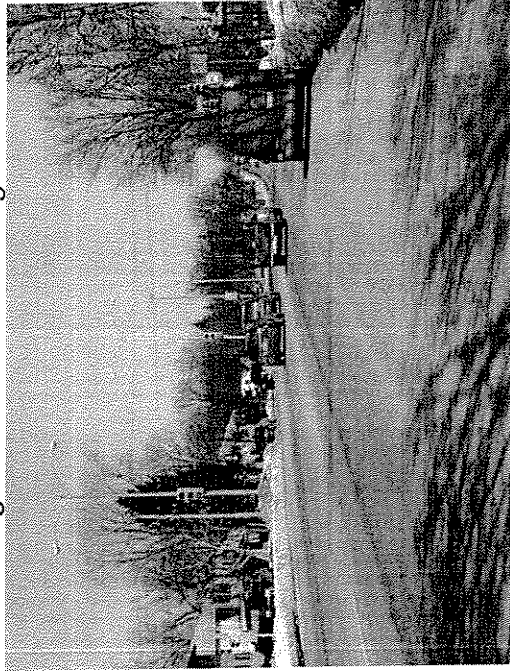
Congress and 76<sup>th</sup> – Facing East



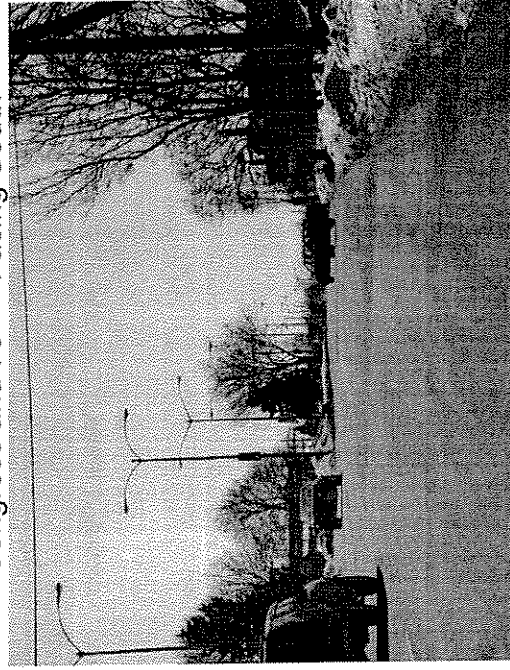
Congress and 76<sup>th</sup> – Facing West



Congress and 76<sup>th</sup> – Facing North



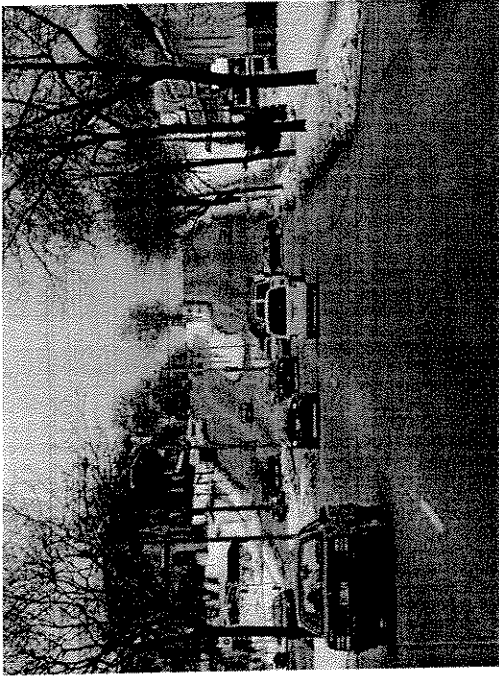
Congress and 76<sup>th</sup> – Facing South



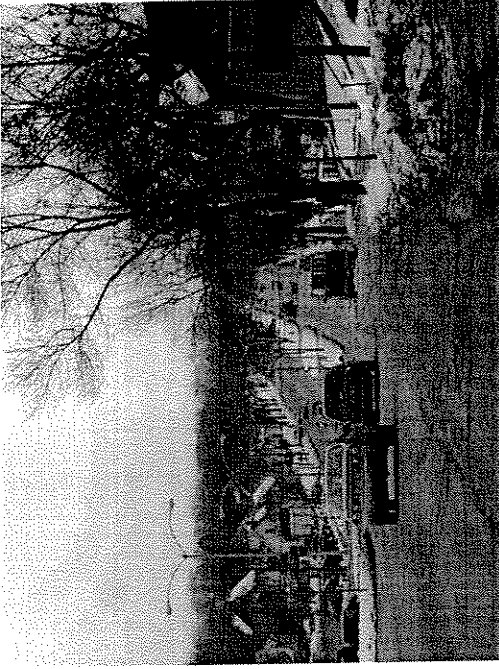


**INTERSECTION PICTURES  
13 INTERSECTIONS CITYWIDE**

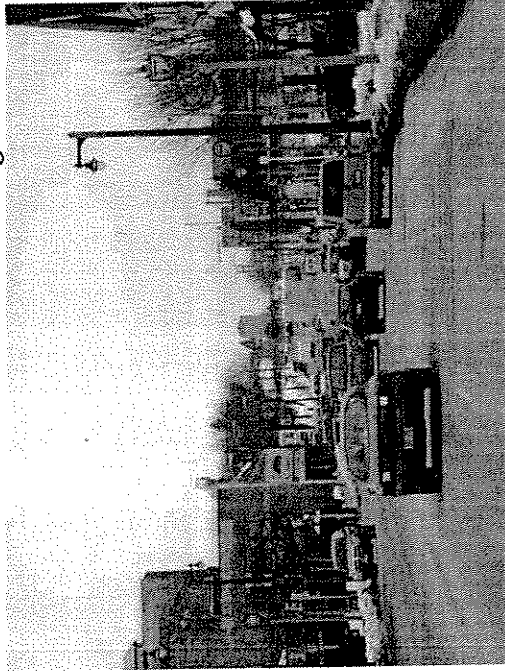
Dr. MLK Dr. and Locust – Facing East



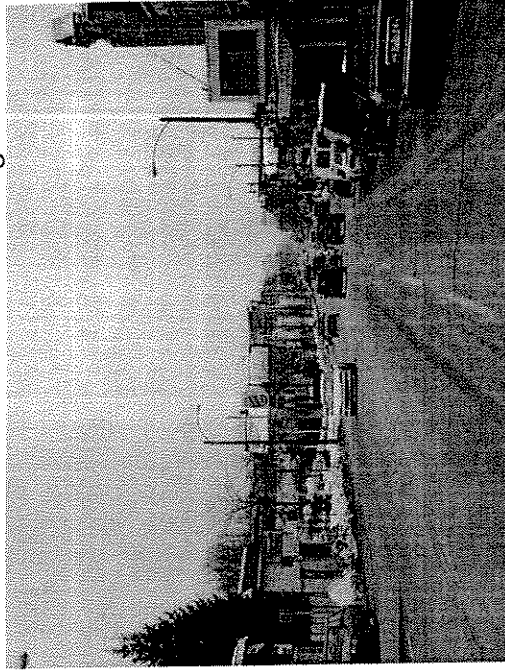
Dr. MLK Dr. and Locust – Facing West



Dr. MLK Dr. and Locust – Facing North

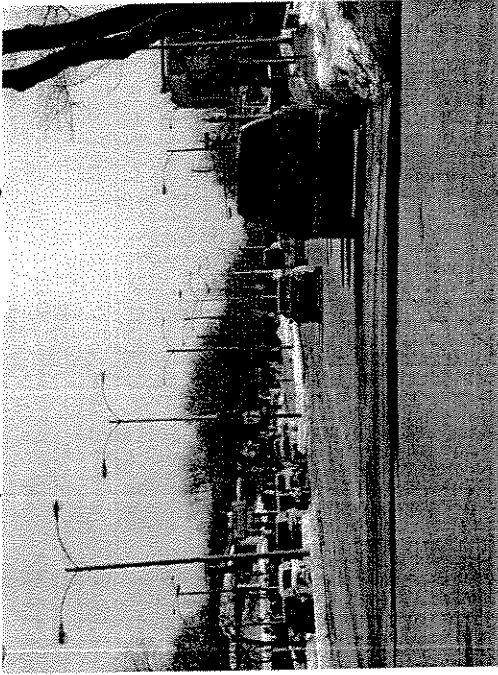


Dr. MLK Dr. and Locust – Facing South

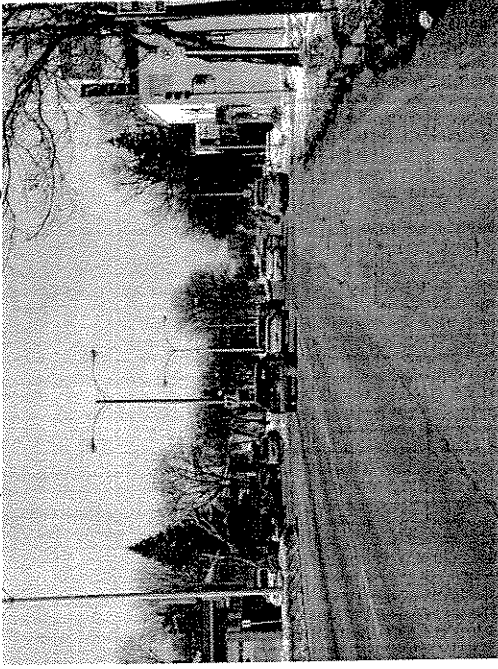


**INTERSECTION PICTURES  
13 INTERSECTIONS CITYWIDE**

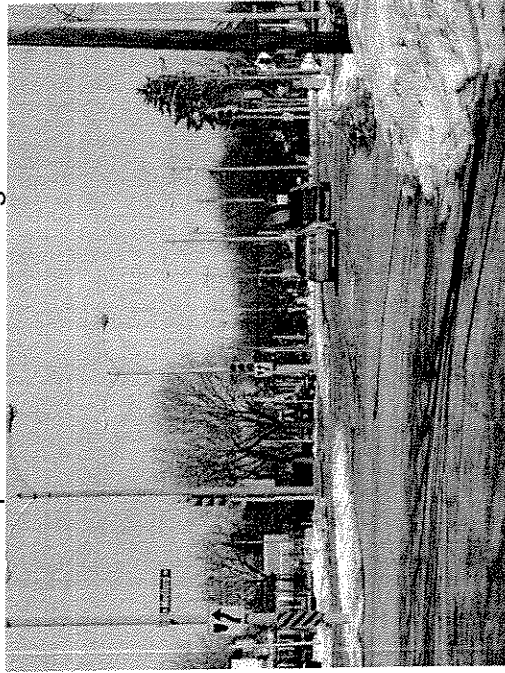
Hampton and 68<sup>th</sup> — Facing East



Hampton and 68<sup>th</sup> — Facing West

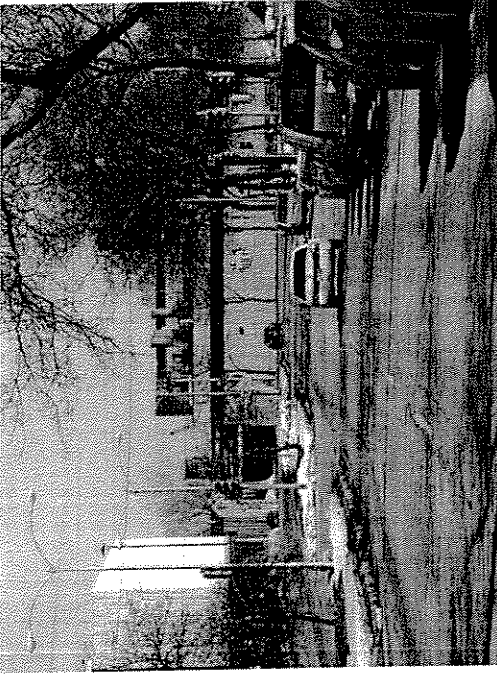


Hampton and 68<sup>th</sup> — Facing North



**INTERSECTION PICTURES  
13 INTERSECTIONS CITYWIDE**

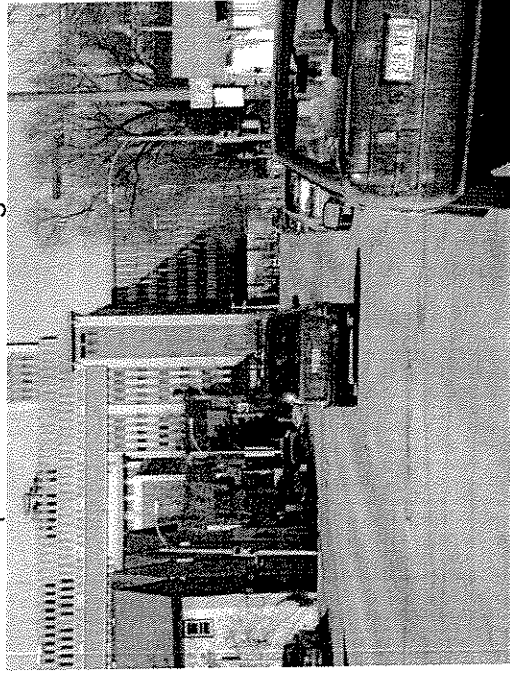
Lapham and 2<sup>nd</sup> – Facing East



Lapham and 2<sup>nd</sup> – Facing West



Lapham and 2<sup>nd</sup> – Facing North



Lapham and 2<sup>nd</sup> – Facing South

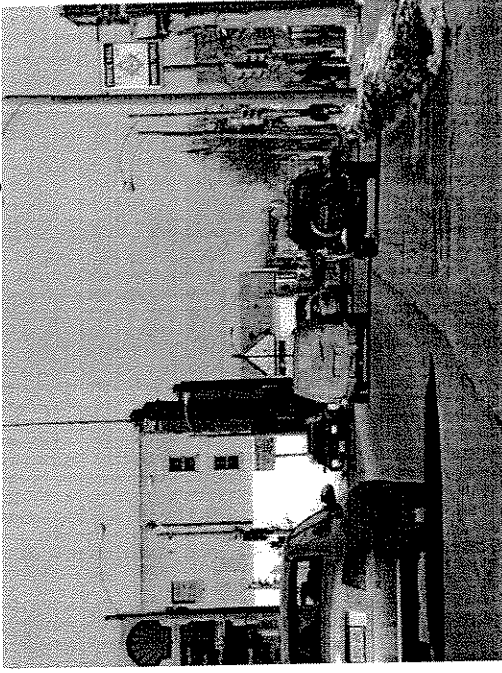


**INTERSECTION PICTURES  
13 INTERSECTIONS CITYWIDE**

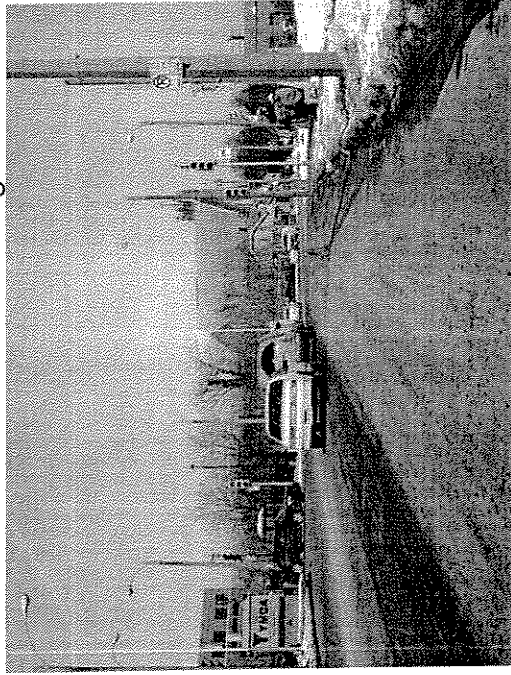
North and Teutonia – Facing East



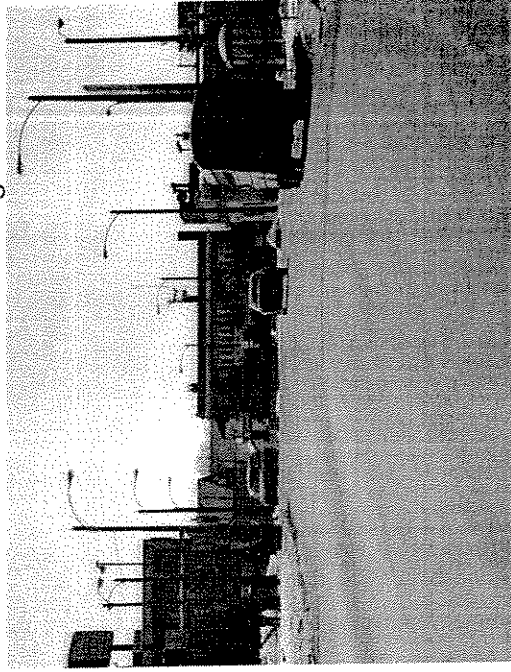
North and Teutonia – Facing West



North and Teutonia – Facing North

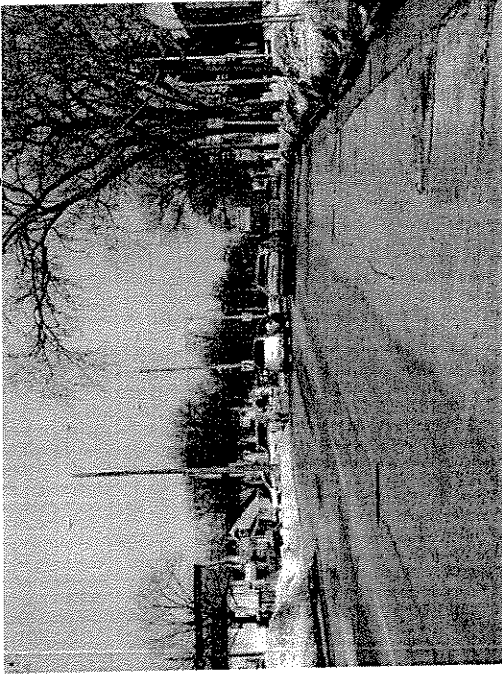


North and Teutonia – Facing South

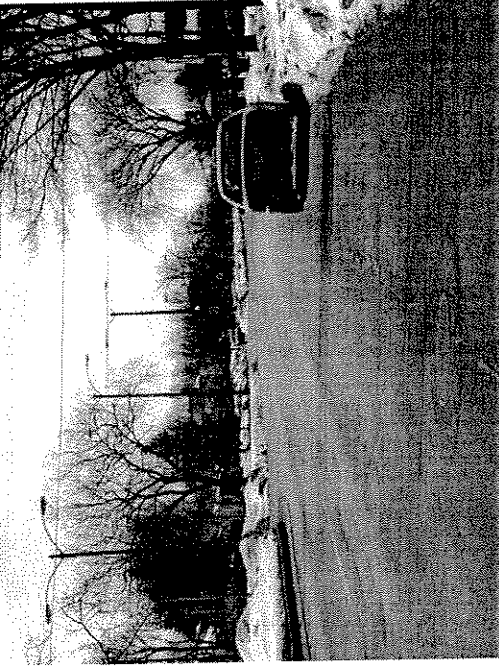


**INTERSECTION PICTURES  
13 INTERSECTIONS CITYWIDE**

Sherman and Villard – Facing North

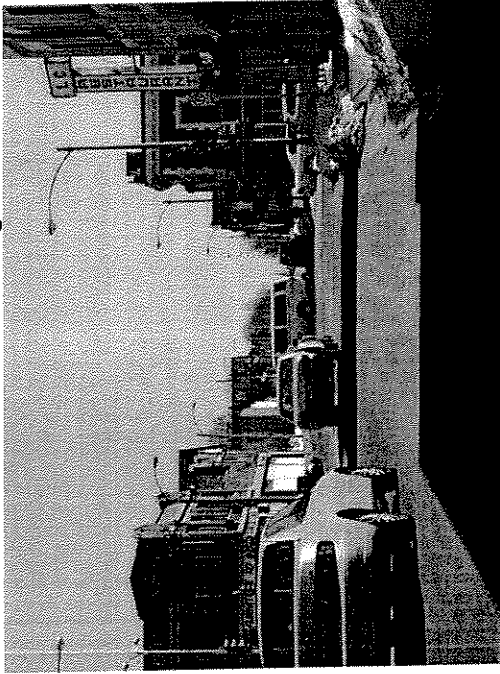


Sherman and Villard – Facing South

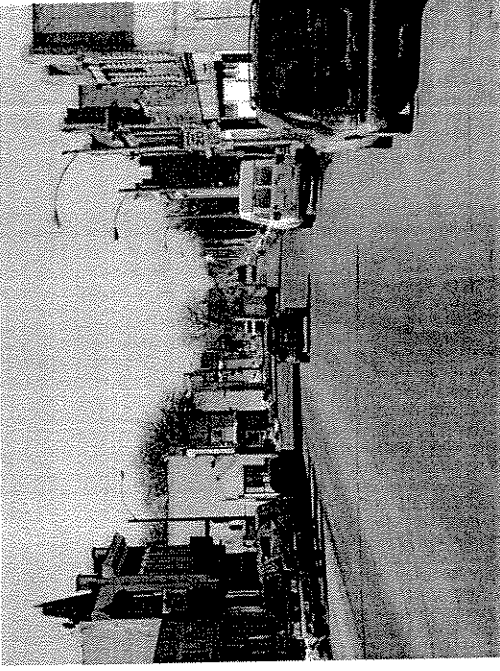


**INTERSECTION PICTURES  
13 INTERSECTIONS CITYWIDE**

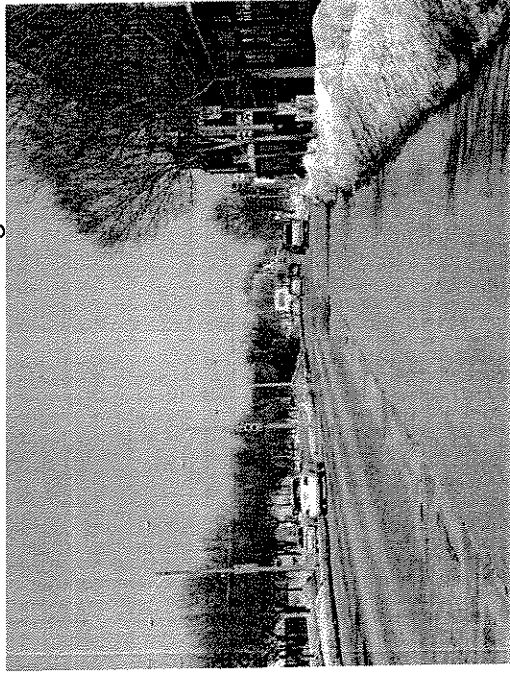
Vliet and 27<sup>th</sup> – Facing East



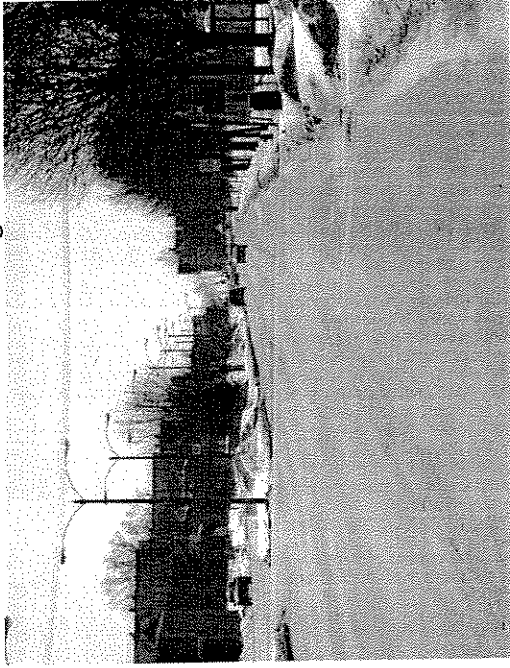
Vliet and 27<sup>th</sup> – Facing West



Vliet and 27<sup>th</sup> – Facing North

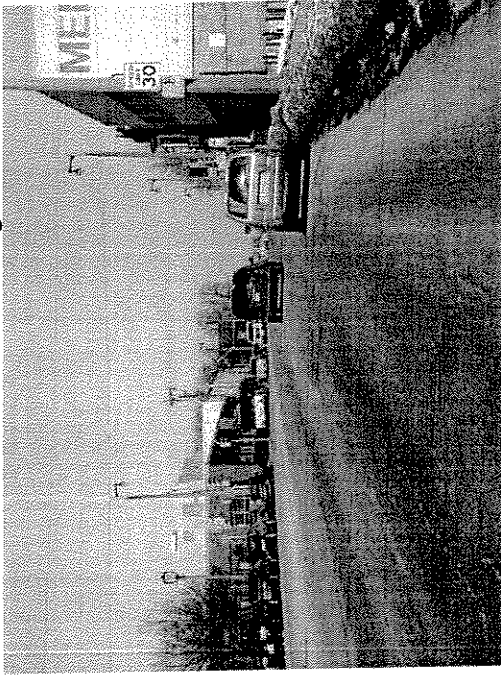


Vliet and 27<sup>th</sup> – Facing South

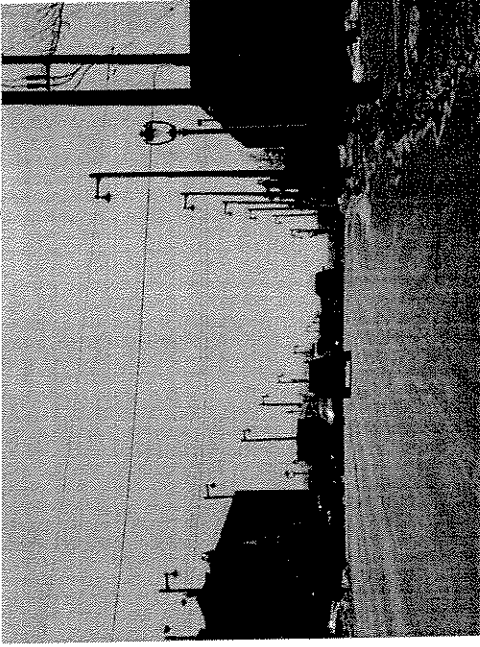


**INTERSECTION PICTURES  
13 INTERSECTIONS CITYWIDE**

Wells and 35<sup>th</sup> – Facing North



Wells and 35<sup>th</sup> – Facing South



Wells and 17<sup>th</sup> – Facing East

