

S.W. 1/4 SEC. 20, T. 7N., R. 22E.

362

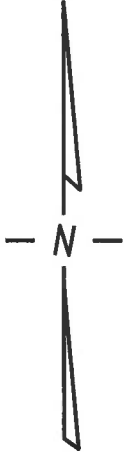
361

S.E. 1/4 SEC. 20, T. 7N., R. 22E.

W. Vliet

(80' R.O.W.)

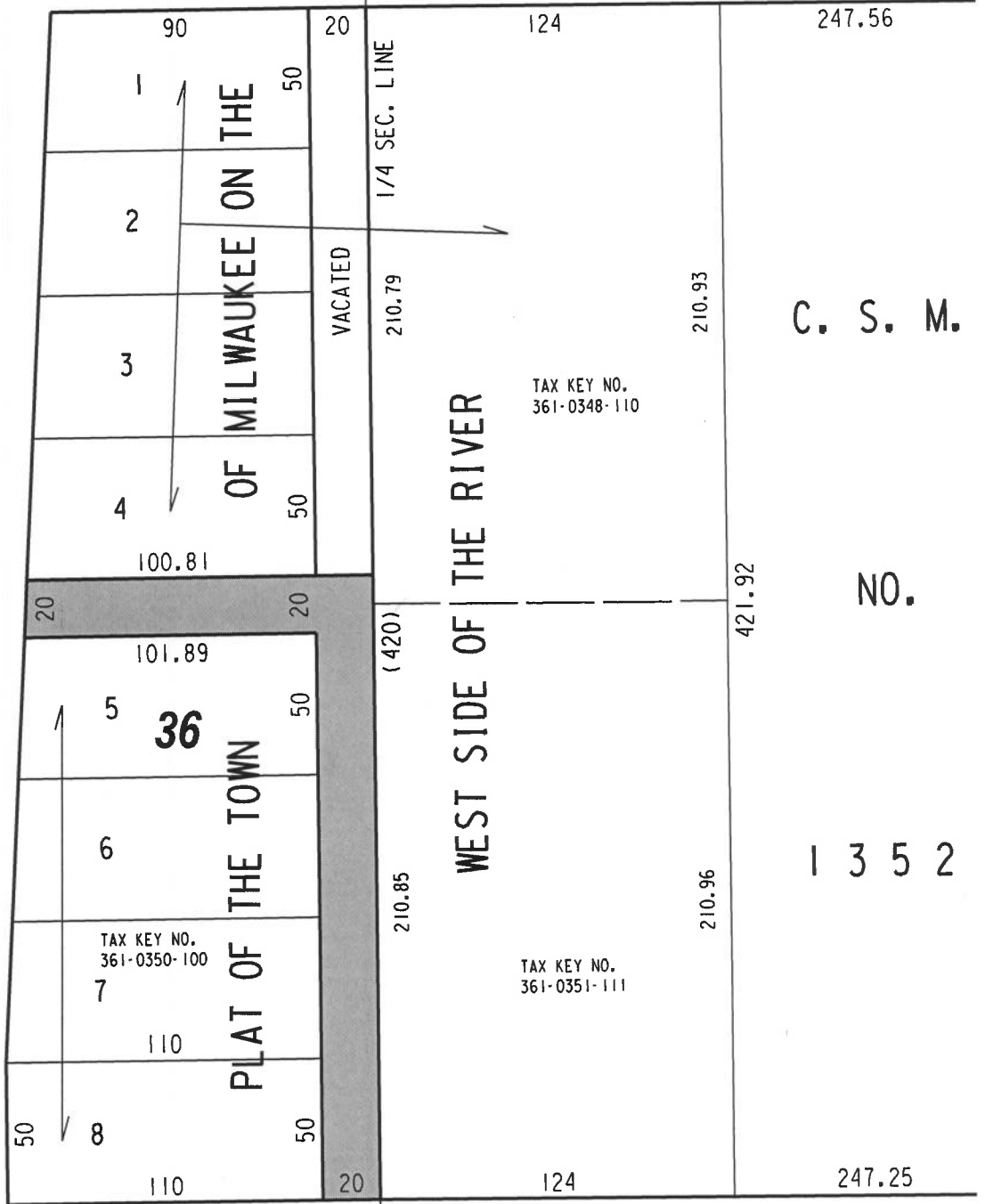
St.



St.

(R.O.W. VARIES)

N. 6th



C. S. M.

NO.

1 3 5 2

W. McKinley

(R.O.W. VARIES)

Ave.



PUBLIC ALLEYS PROPOSED TO BE VACATED

EXHIBIT "A"  
FILE NO. 220168

INFRASTRUCTURE SERVICES DIVISION

MILWAUKEE, WISCONSIN

ASSIGNED TO: W. FUCHS

CH'K'D. BY: W. FUCHS

DRAWN BY: W.F.

DATE: JUNE 27, 2022

PROJECT/GRANT NO.: WK52337440

SCALE: 1" = 60'

APPROVED BY:

*Yuan Utz*

*Jewel Kruschke*

CENTRAL DRAFTING & RECORDS MANAGER

CITY ENGINEER