



181281  
SIGN-GEN-19-00029

## Certificate of Appropriateness--Amended

Milwaukee Historic Preservation Commission/200 E. Wells Street/Milwaukee, WI 53202/phone 414-286-5712/fax 414-286-3004

**Property** 1001 N. OLD WORLD THIRD ST. Old World 3<sup>rd</sup> Street HD  
**Description of work** Remove awnings, signage, and light fixtures from previous tenant. Install two new signs of backlit individual letters on dark background material (no cabinet) per drawings. Dimensions will be the same for the two signs. New awning per mockups on pages 4 & 5  
**Date issued** 11/27/2018; Amd. 2/5/19 PTS ID 114668 COA: Burgerim signs

In accordance with the provisions of Section 320-21 (11) and (12) of the Milwaukee Code of Ordinances, the Milwaukee Historic Preservation Commission has issued a certificate of appropriateness for the work listed above. The work was found to be consistent with preservation guidelines. The following conditions apply to this certificate of appropriateness:

**Construction per notes on page 3.**

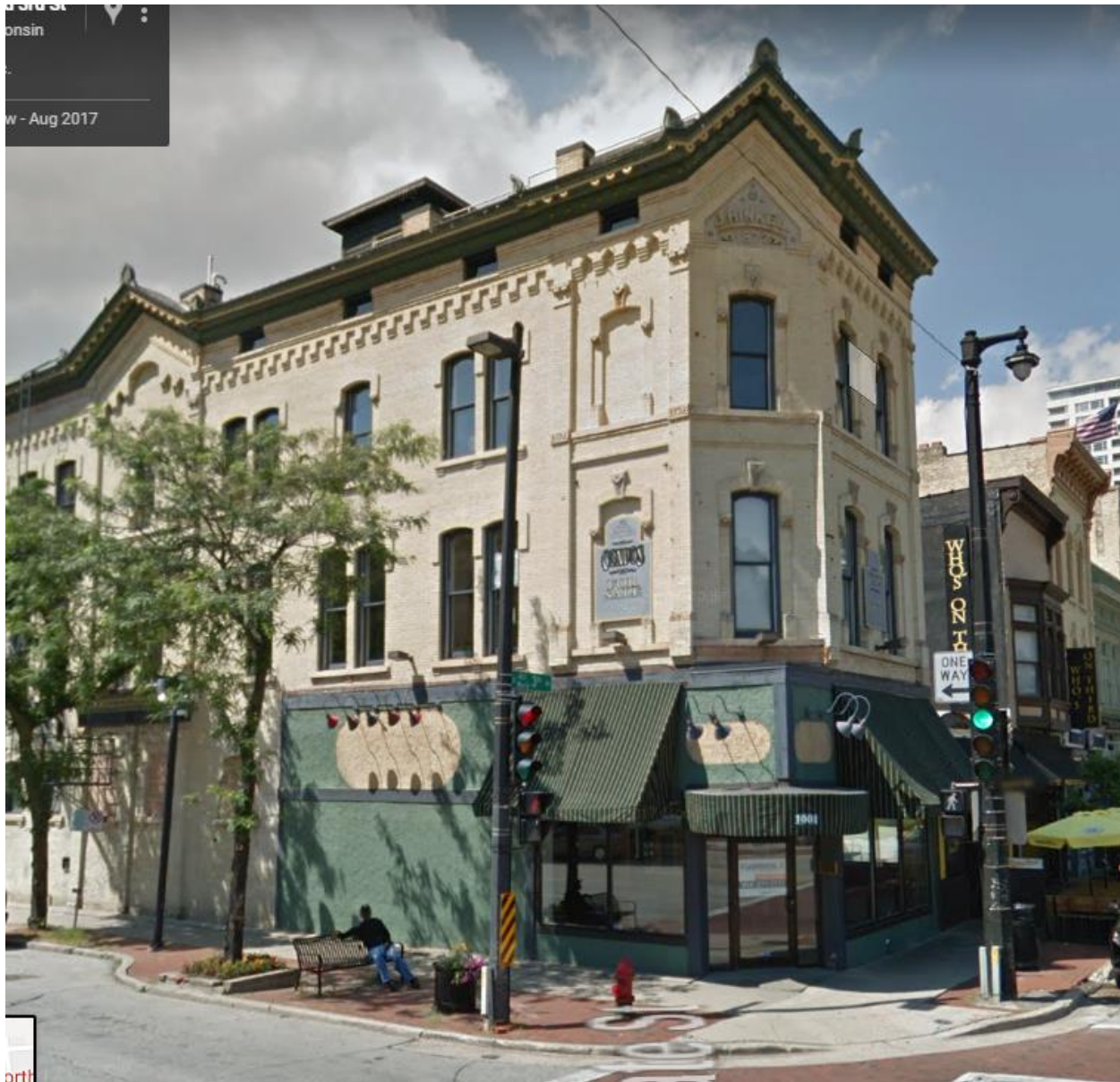
All work must be done in a craftsman-like manner, and must be completed within one year of the date this certificate was issued. Staff must approve any changes or additions to this certificate before work begins. Work that is not completed in accordance with this certificate may be subject to correction orders or citations. If you require technical assistance, please contact Historic Preservation staff as follows: Phone: (414) 286-5712 E-mail: hpc@milwaukee.gov.

If permits are required, you are responsible for obtaining them from the Milwaukee Development Center. If you have questions about permit requirements, please consult the Development Center's web site, [www.milwaukee.gov/build](http://www.milwaukee.gov/build), or call (414) 286-8210.

City of Milwaukee Historic Preservation Staff

Copies to: Development Center, Ald. Robert Bauman, Contractor

1st St  
Winn  
- Aug 2017

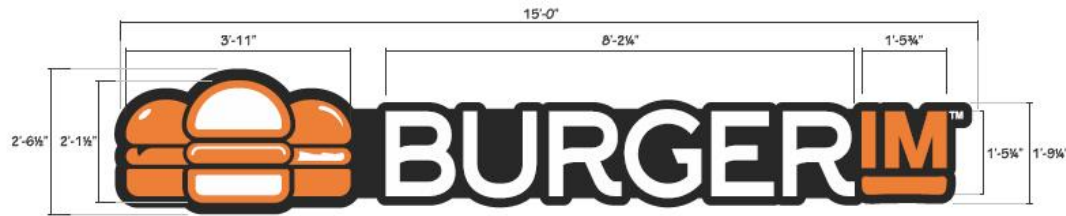


Ground floor awnings and gooseneck fixtures are to be removed.



Construction to be in the style above with individual pieces for each letter and each burger. Sign components will be mounted to a metal panel rather than a cabinet.





END VIEW

**MANUFACTURING SPECIFICATIONS**

FACE: "BURGER" - WHITE ACRYLIC, "LOGO" & "IM" - WHITE ACRYLIC W/ ORANGE TRANSLUCENT VINYL OVERLAY (3M 3630-4815-04)  
 RETURNS:  
 BACKS: .040" BLACK ALUMINUM  
 TRIMCAP: 3/4" BLACK  
 ILLUMINATION: WHITE LED MODULES  
 BACKER: 1/8" BLACK DI-BOND

**A** MANUFACTURE AND INSTALL: AREA: 38.12 SQ. FT.  
 ONE (1) SET FACE ILLUMINATED CHANNEL LETTERS AND BURGER - SCALE: 1/2"=1'-0"

**NOTE:**  
 PHOTO WAS MODIFIED FOR DESIGN PURPOSE ONLY



PROPOSED STOREFRONT ELEVATION - SCALE: 3/16"=1'-0"



NIGHT VIEW

Measurements, specs, and State Street elevation



PROPOSED STOREFRONT ELEVATION - SCALE: 3/16"=1'-0"

Old World 3<sup>rd</sup> Street elevation