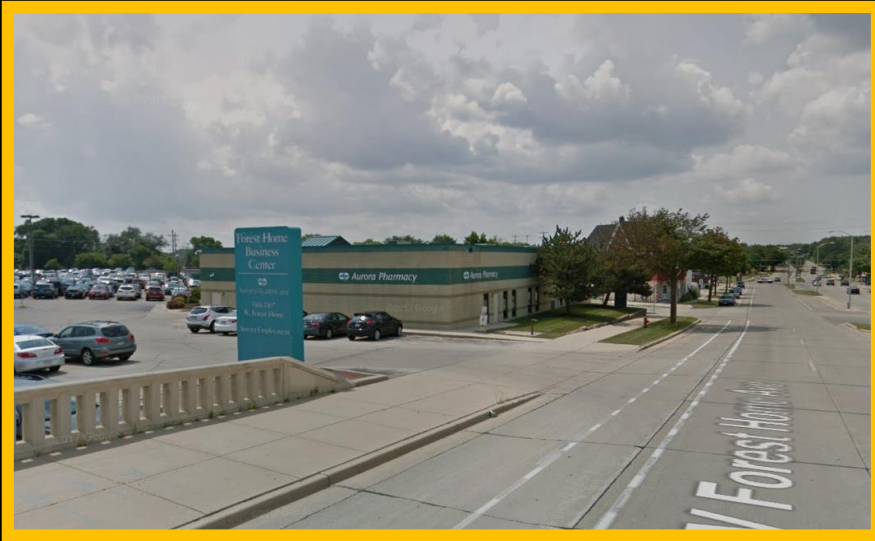


File No. 181487. Substitute resolution relating to a Minor Modification to the Detailed Planned Development known as St. Luke's Medical Center, Phase 2, to allow for additional wall signage on the existing building at 3355 West Forest Home Avenue, located on the south side of West Forest Home Avenue, east of South 34th Street, in the 11th Aldermanic District.

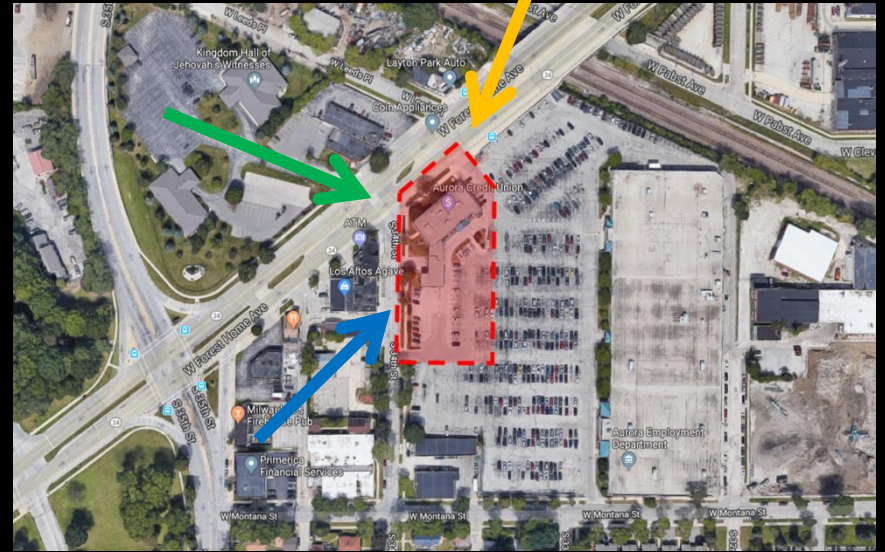




# File No. 181487. Site Context Photos



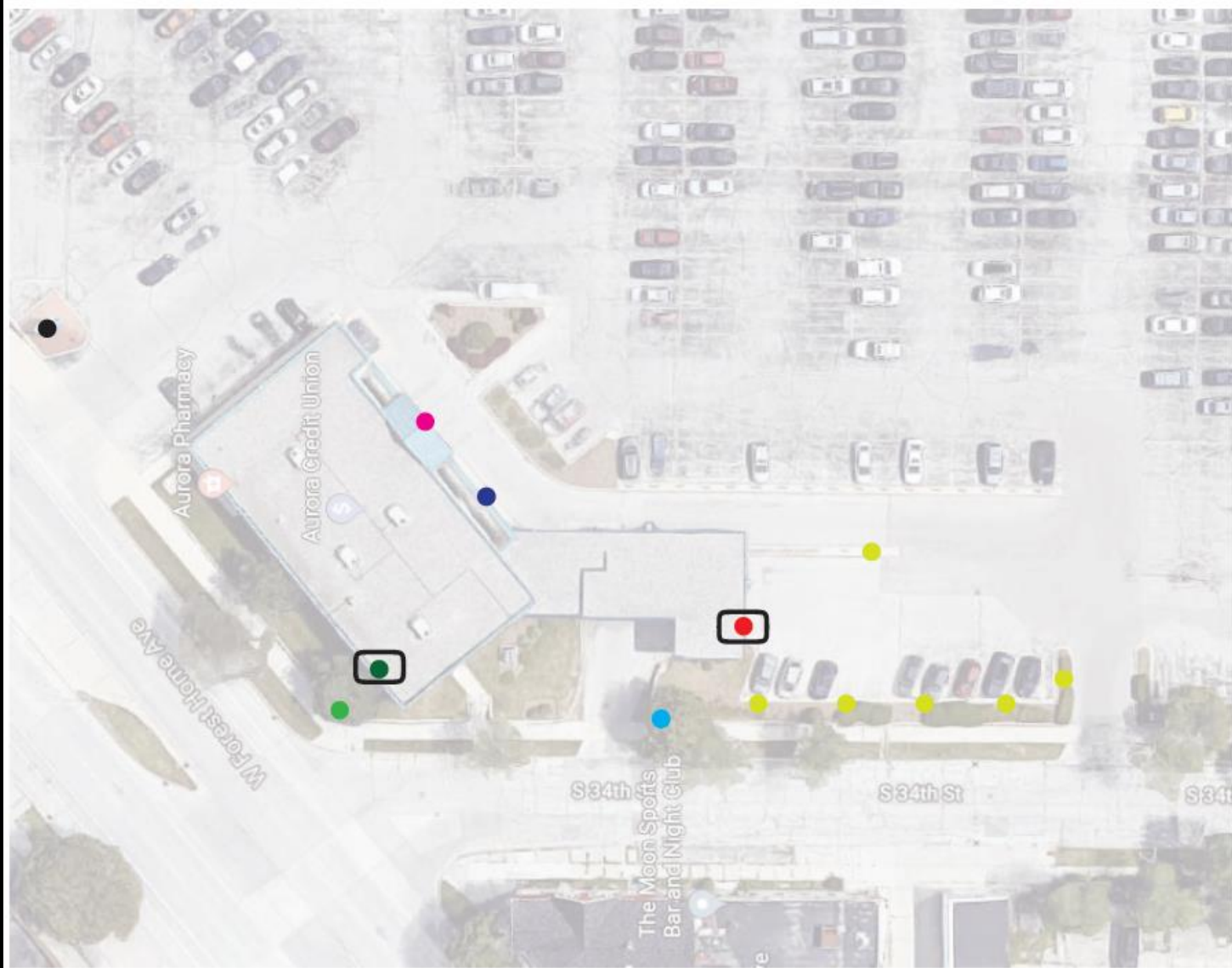
View from West Forest Home Avenue looking south-west



View from Forest Home Ave. & 34<sup>th</sup> St. looking east



View from South 34<sup>th</sup> Street looking north-east



2-4-19 Need Minor Modification to DPD for two sets of lit letters

SIGN TYPE	
●	FP-01 - FLAT PANELS
●	FP-02 - FLAT PANELS
●	FP-03 - FLAT PANELS
●	NL-01 - NON-LIT LETTERS
✓ ●	LL-01-01 - LIT LETTERS
✓ ●	LL-01-02 - LIT LETTERS
●	VIN-01 - EXTERIOR VINYL



# File No. 181487. Proposed Signs

## SIGN SPECIFICATIONS

Lighting: LED  
Voltage: L96 amps @ 120/277 volts

**[A] - ILLUMINATED LOGO CABINET**  
Description: Face-Lit (Acrylic)  
Depth: 3"  
Face Color: White with Rust Brown 3630-63 vinyl  
Return Color: White  
Trimcap Color: White  
Installation: Raceway

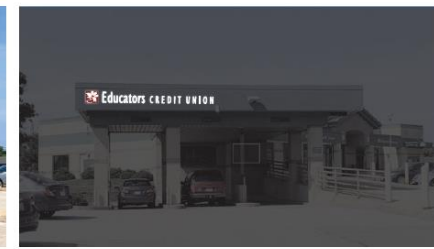
**[B] - ILLUMINATED LETTERS**  
Description: Face-Lit (Acrylic)  
Depth: 3"  
Face Color: White  
Return Color: White  
Trimcap Color: White  
Installation: Raceway

**[C] - RACEWAY**  
Color: Paint to match MP13067 Craneville Green  
Green

**Note\*** Color match is above. Actual paint color for building has been requested.

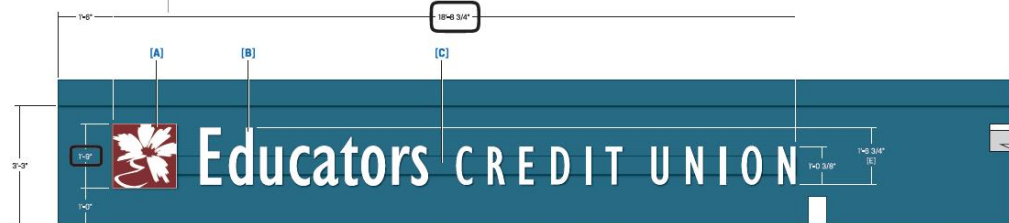


proposed layout - day view



proposed layout - night view

32.78 sq'



## SIGN SPECIFICATIONS

Lighting: LED  
Voltage: L96 amps @ 120/277 volts

**[A] - ILLUMINATED LOGO CABINET**  
Description: Face-Lit (Acrylic)  
Depth: 3"  
Face Color: White with Rust Brown 3630-63 vinyl  
Return Color: White  
Trimcap Color: White  
Installation: Raceway

**[B] - ILLUMINATED LETTERS**  
Description: Face-Lit (Acrylic)  
Depth: 3"  
Face Color: White  
Return Color: White  
Trimcap Color: White  
Installation: Raceway

**[C] - RACEWAY**  
Color: Paint to match MP13067 Craneville Green. Electric on left end of raceways.

**Note\*** Color match is above. Actual paint color for building has been requested.



proposed condition - day view

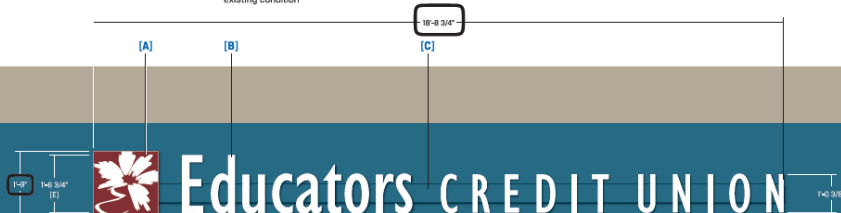


proposed condition - night view



existing condition

32.78 sq'



# File No. 181487. Replacement of Existing Sign (permitted)

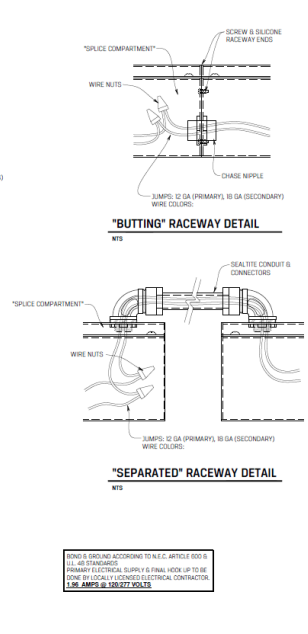
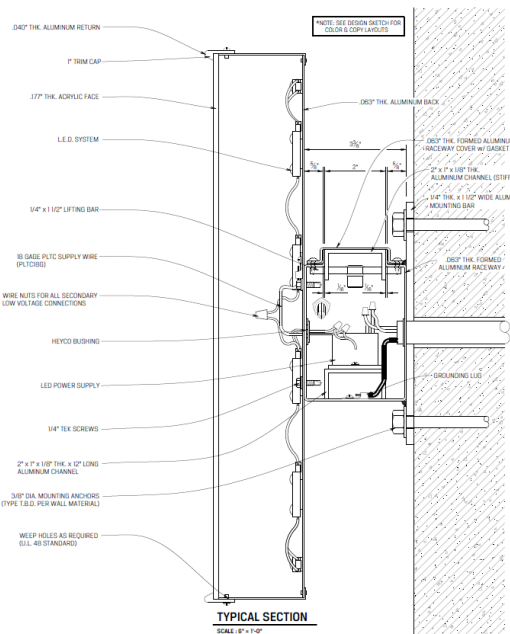


Existing Layout



Proposed Layout

Non lit letters to replace existing 'Aurora Credit Union' letters facing parking area.



**PORLOCKI**  
1025 NORTH WISCONSIN AVENUE  
MILWAUKEE, WI 53212

**Product**  
EDUCATORS CREDIT UNION  
AURORA FOREST HOME  
BUSINESS CENTER  
MILWAUKEE, WI

**Scale:** AS NOTED  
Original Page Size: 11 x 17

**Notes**

REV.	DESCRIPTION	BY	DATE
1		SS	11/18

**Revisions**

REV.	DESCRIPTION	BY	DATE
1		SS	11/18

**Drawn by:** MATT LAMMERS  
**Checked by:** KEVIN TRAPP

**Sign Loc. No.**

**LL-01**  
RACEWAY LETTER  
Sign Type

**83135** 501  
©2017 Project Job No. Sheet