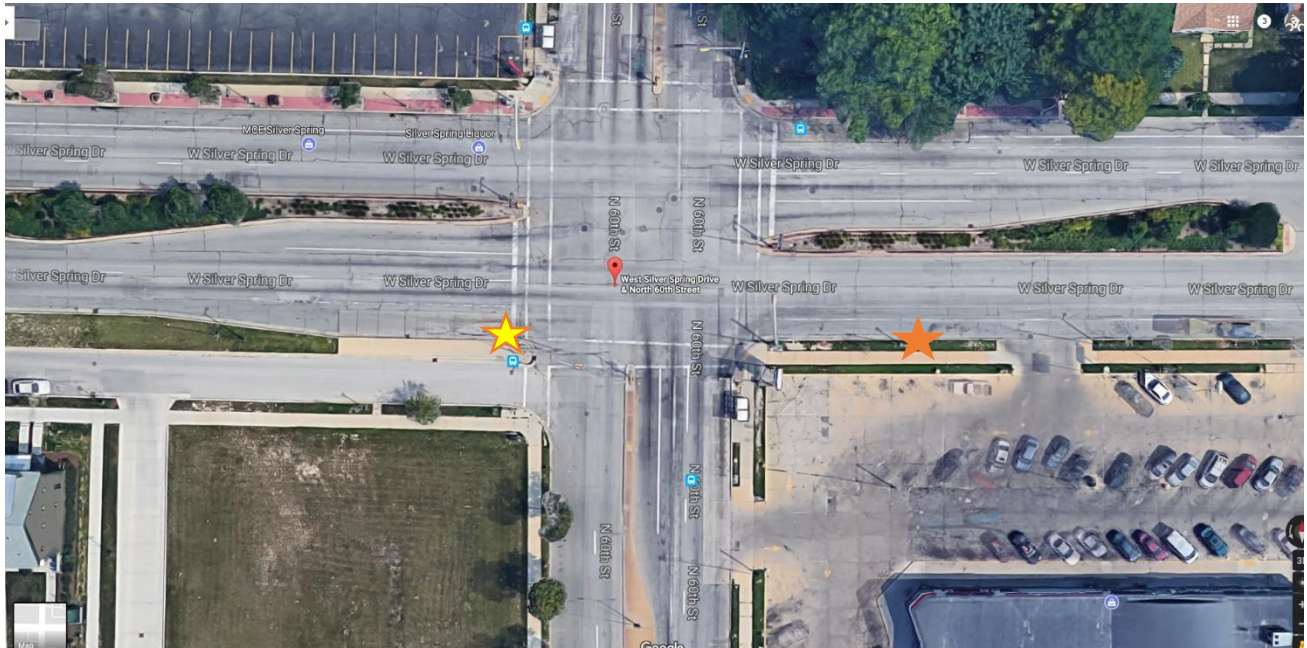
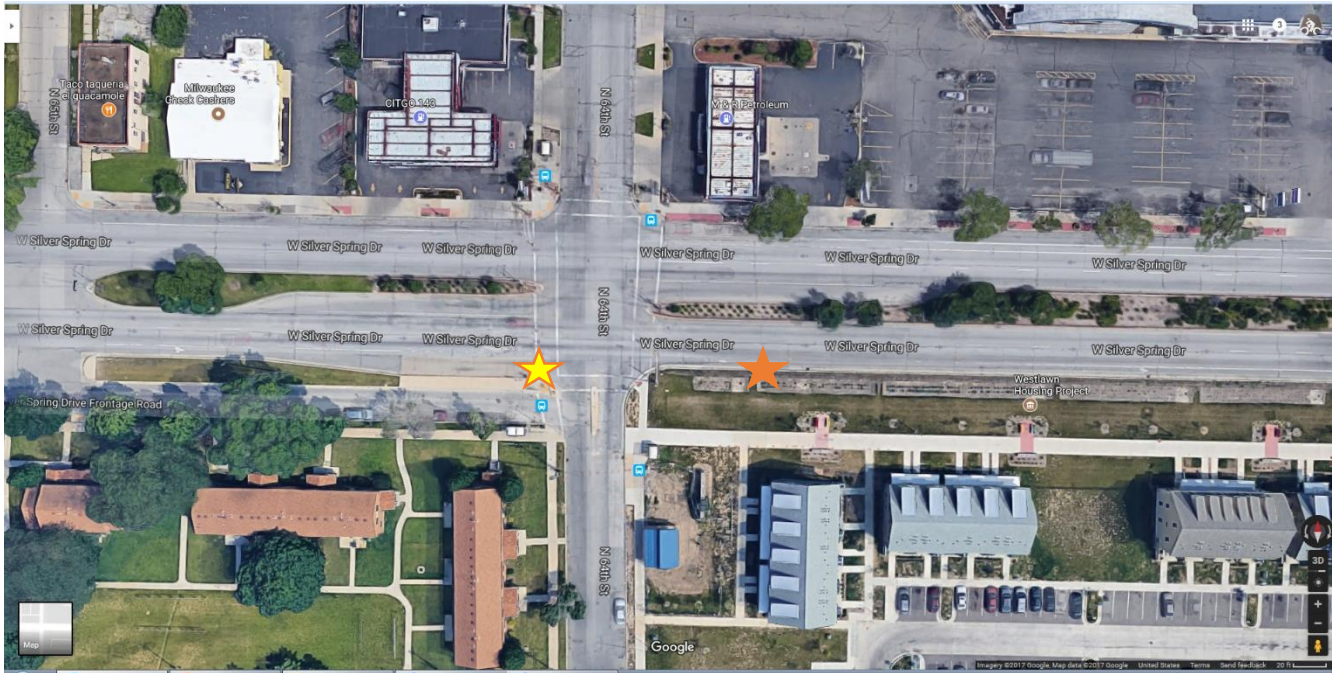


## Silver Spring & 60<sup>th</sup> - Eastbound – Stop 6156



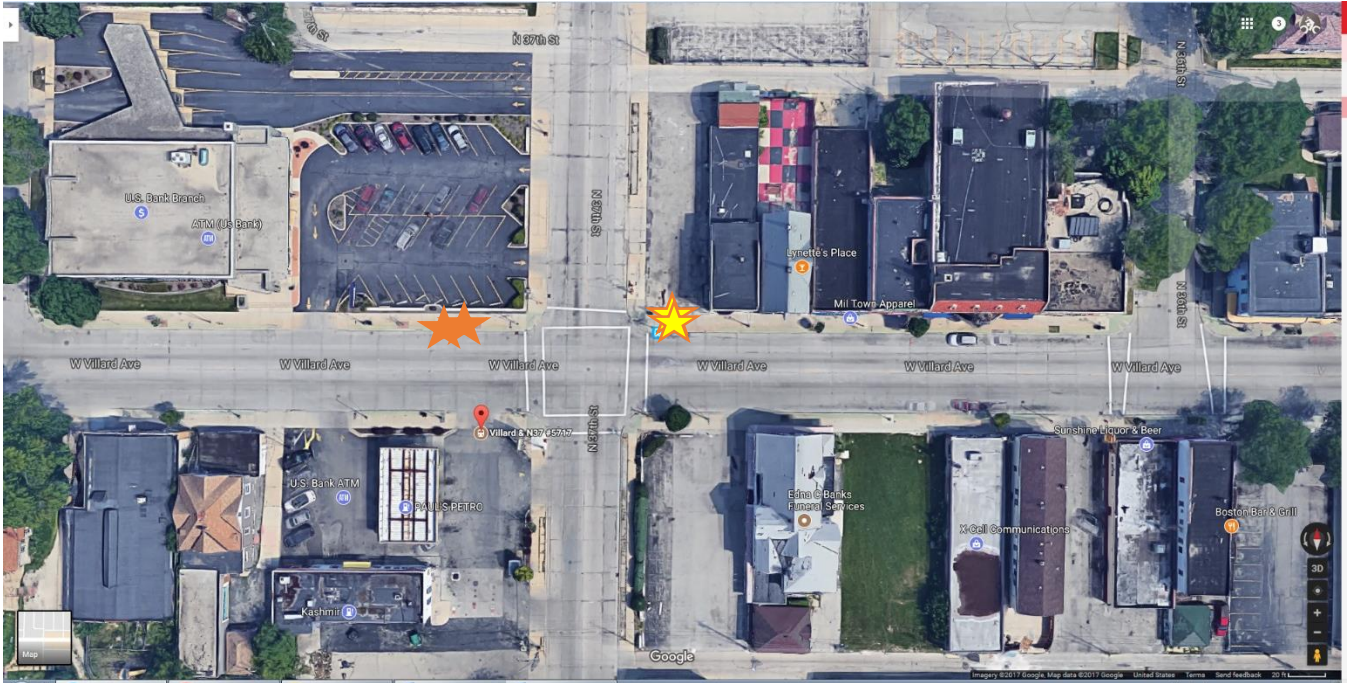
- Orange = proposed stop
- Yellow = current stop
- Ridership: 110 on / 70 off
- Proximity to adjacent stops: 500 ft from last stop - 500 ft to the next
- Aldermanic District: 9<sup>th</sup> - Chantia Lewis (on border of 2<sup>nd</sup> Cavalier Johnson)
- Supervisor District: 2<sup>nd</sup> - Sequanna Taylor
- Currently ADA Compliant: No
- Pedestrian Safety: Farside has sidewalk, more area to stand
- Parking Spaces effected: None
- Stop history: Current stop can't be fixed without significant street reconstruction.
- Notes: **Recommend Approval pending boarding pad.**

## Silver Spring & 64<sup>th</sup> – Eastbound – Stop 6154



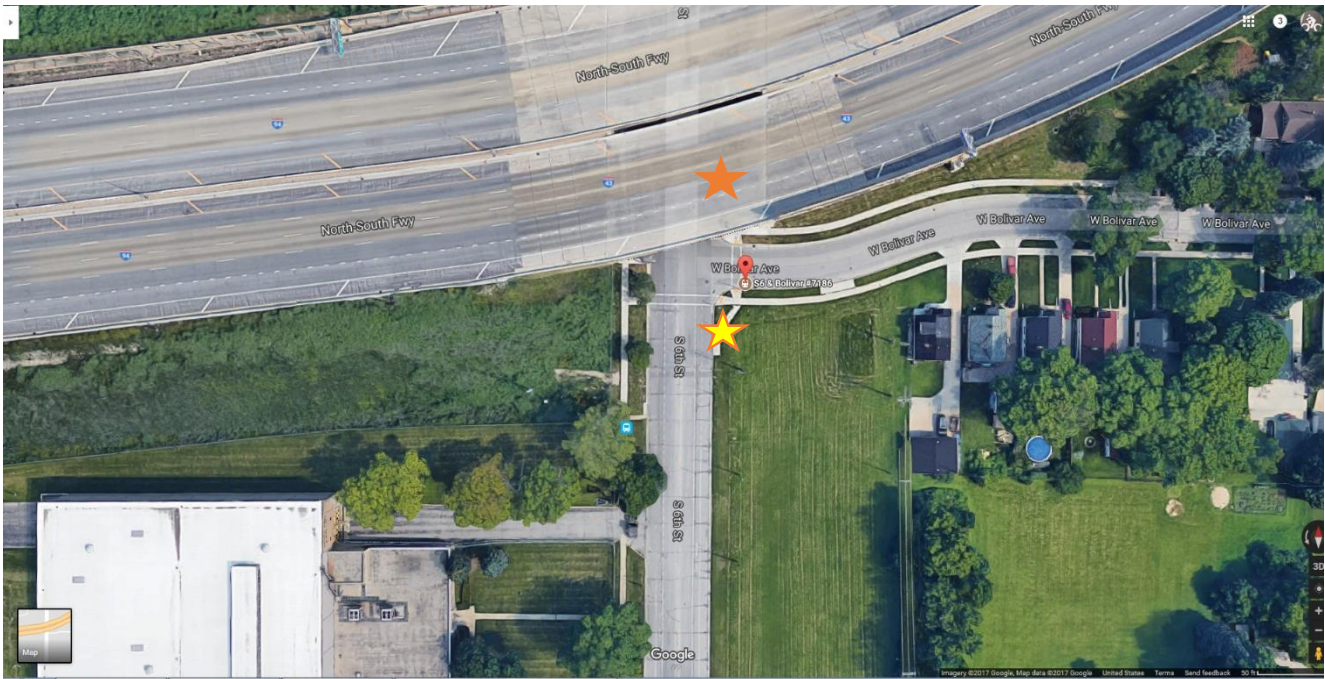
- Orange = proposed stop
- Yellow = current stop
- Ridership: 89 on / 47 off
- Proximity to adjacent stops: about 780 feet from last stop – 626 to next stop
- Aldermanic District: From 2<sup>nd</sup> Cavalier Johnson to 9<sup>th</sup> Chantia Lewis
- Supervisor District: 2<sup>nd</sup> - Sequanna Taylor
- Currently ADA Compliant: No
- Pedestrian Safety: Sidewalks
- Parking Spaces effected: None
- Stop history: Current stop can't be fixed without significant street reconstruction.
- Notes: **This location is on hold for further research by the City.**

## Villard & 37<sup>th</sup> – Westbound – Stop 5671



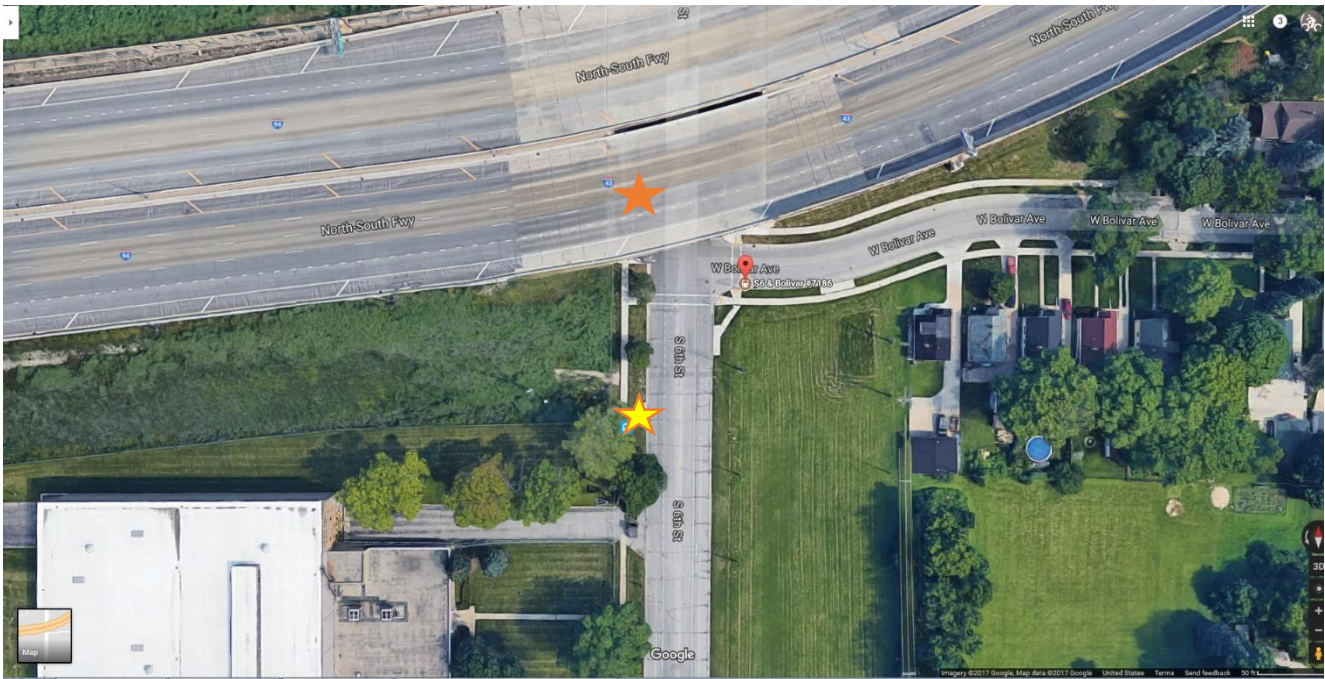
- Orange = proposed stop
- Yellow = current stop
- Ridership: 5 on / 9 off
- Proximity to adjacent stops: ~ 770 from last stop - ~ 506 to next
- Aldermanic District: 1<sup>st</sup> - Ashanti Hamilton
- Supervisor District: 1<sup>st</sup> Theodore Lipscomb
- Currently ADA Compliant: No
- Pedestrian Safety: Sidewalks, will be ADA compliant if approved
- Parking Spaces effected: None
- Stop history:
- Notes: **This location is on hold for further research by the City.**

## S. 6<sup>th</sup> & Bolivar – Northbound – Stop 7186



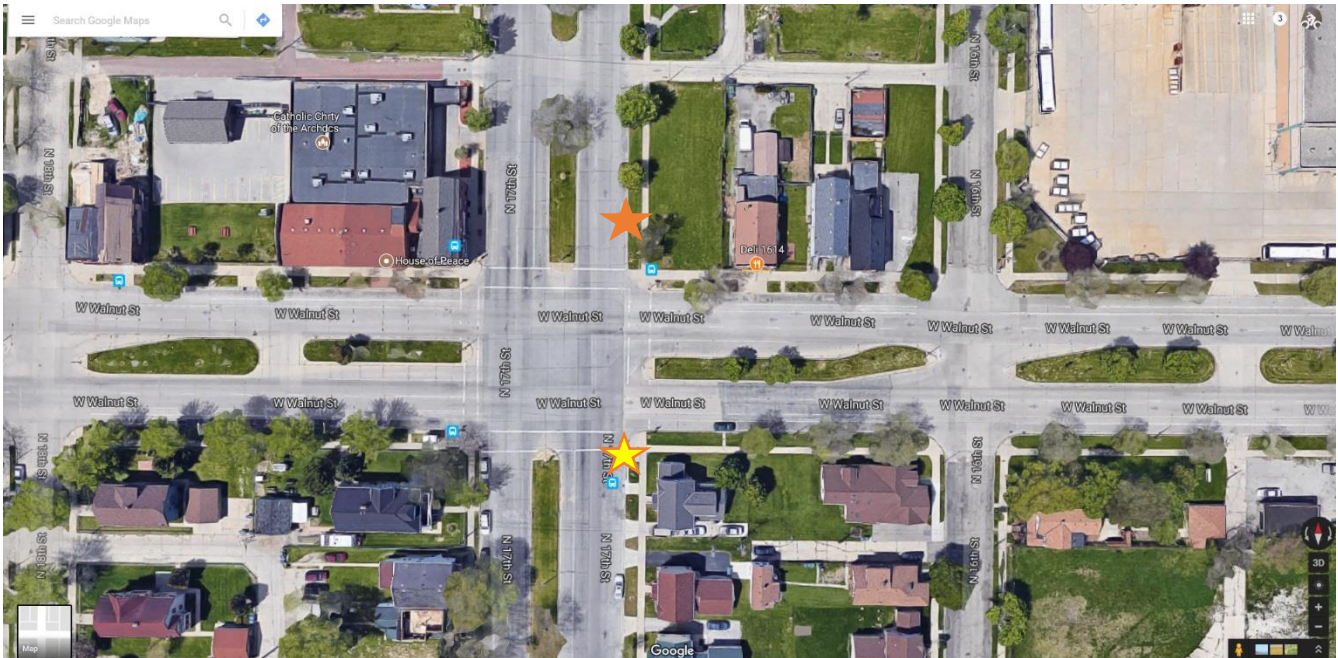
- Orange = proposed stop
- Yellow = current stop
- Ridership: 7 on / 2 off
- Proximity to adjacent stops:
- Aldermanic District: 13<sup>th</sup> - Terry L. Witkowski
- Supervisor District: 14<sup>th</sup> Jason Haas
- Currently ADA Compliant: No
- Pedestrian Safety: Sidewalks, protection from the elements from Bridge, well lit at night
- Parking Spaces effected: None
- Stop history:
- Notes: **The committee recommends approval of the move farside. (under the bridge)**

## S. 6<sup>th</sup> & Bolivar – Southbound – Stop 7159



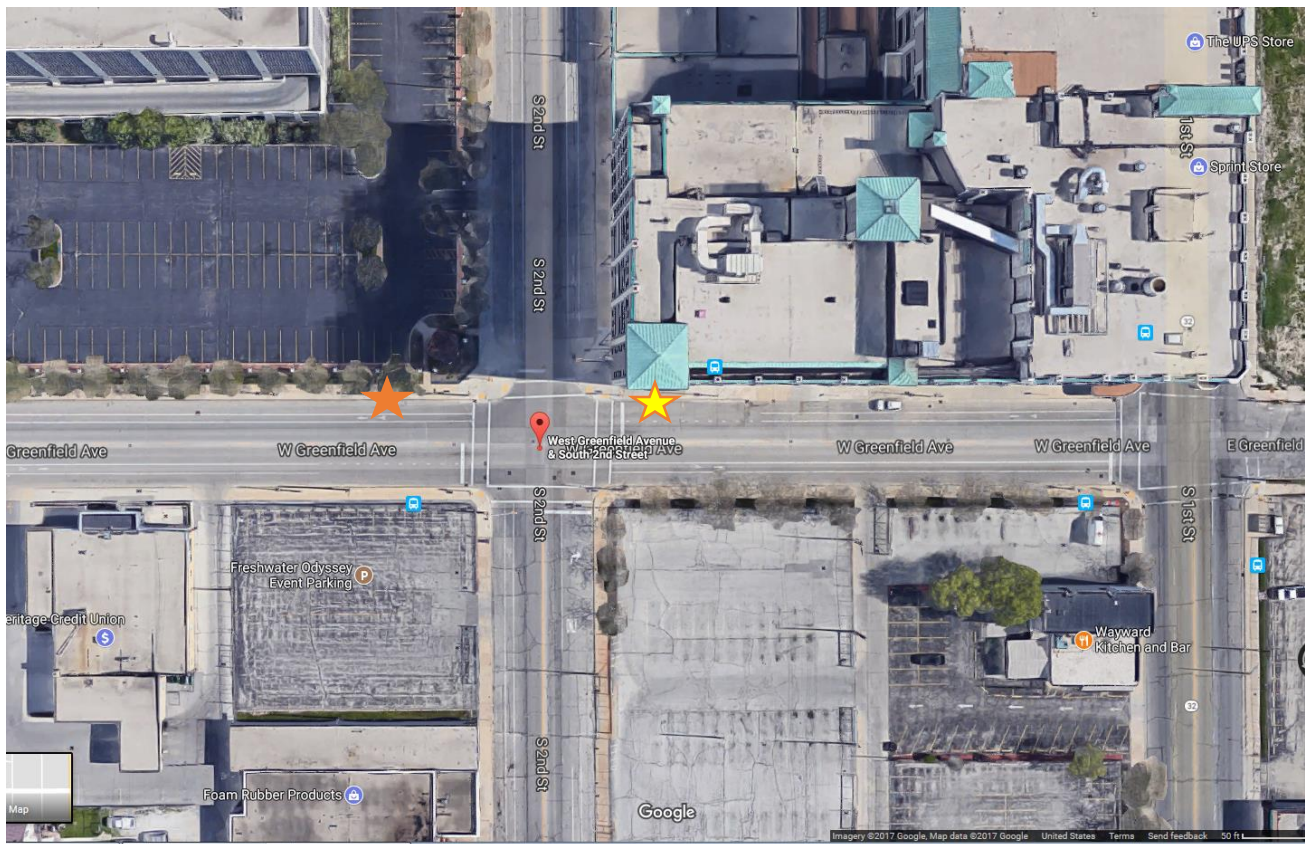
- Orange = proposed stop
- Yellow = current stop
- Ridership: 1 on / 3 off
- Proximity to adjacent stops:
- Aldermanic District: 13<sup>th</sup> - Terry L. Witkowski
- Supervisor District: 14<sup>th</sup> Jason Haas
- Currently ADA Compliant: No
- Pedestrian Safety: Sidewalks, protection from the elements from Bridge, well lit at night
- Parking Spaces effected: None
- Stop history:
- Notes: **The committee recommends approval of the move nearside. (Under the bridge)**

## N. 17th & Walnut – Northbound – Stop 3834



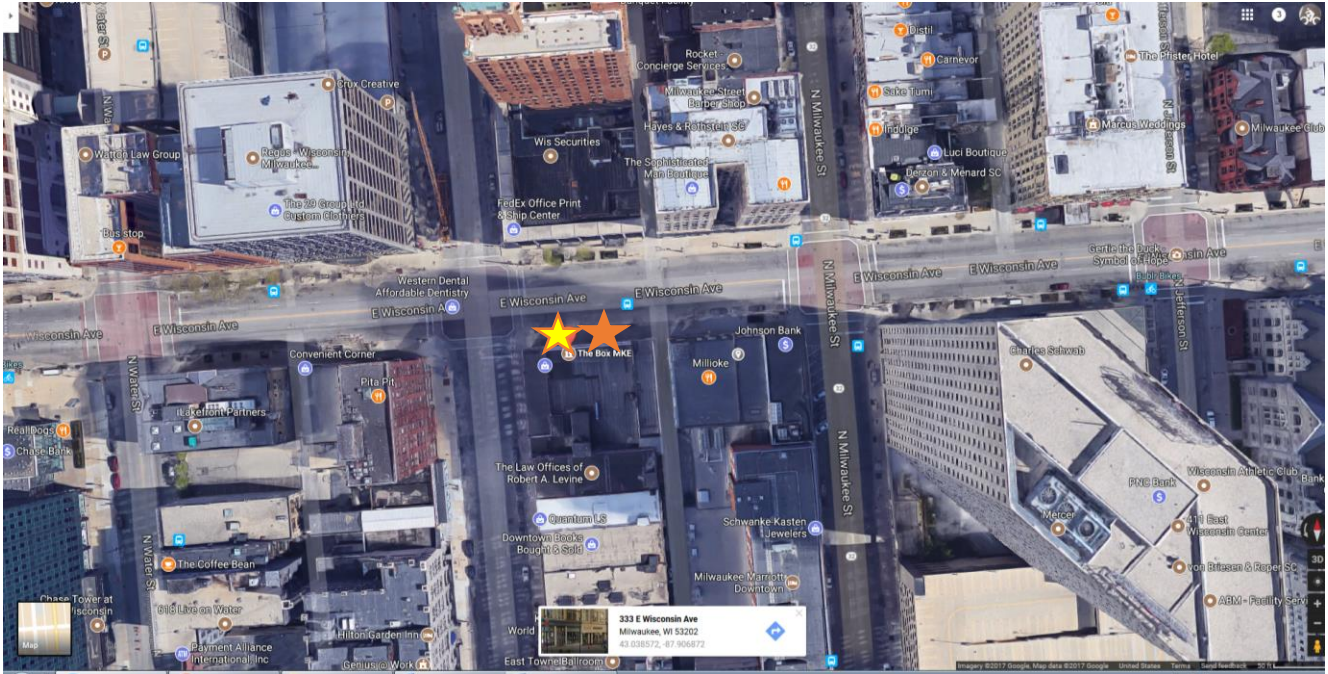
- Orange = proposed stop
- Yellow = current stop
- Ridership: Blue line 42 on / 43 off & Rt 23 33 on / 38 off *Total 75 on / 76 off.*
- Proximity to adjacent stops:
- Aldermanic District: 15<sup>th</sup> - Russell W. Stamper, II
- Supervisor District: 10<sup>th</sup> – Supreme Moore Omokunde
- Currently ADA Compliant: Yes
- Pedestrian Safety: Sidewalks
- Parking Spaces effected:
- Stop history: Request to move farside denied in 2012.
- Notes: Operator relief point, transfer corner
- **The committee recommends approval of the move farside pending a concrete pad is in-place at the new location.**

## Greenfield & S. 2nd – Westbound – Stop 367



- Orange = proposed stop
- Yellow = current stop
- Ridership: 39 on / 2 off
- Proximity to adjacent stops:
- Aldermanic District: 12<sup>th</sup> - José G. Pérez
- Supervisor District: 12<sup>th</sup> - Peggy West
- Currently ADA Compliant:
- Pedestrian Safety: Sidewalks
- Parking Spaces effected:
- Stop history:
- Notes: **The committee recommends moving the stop farside. Parking the in area has changed, reconstruction is ending.**

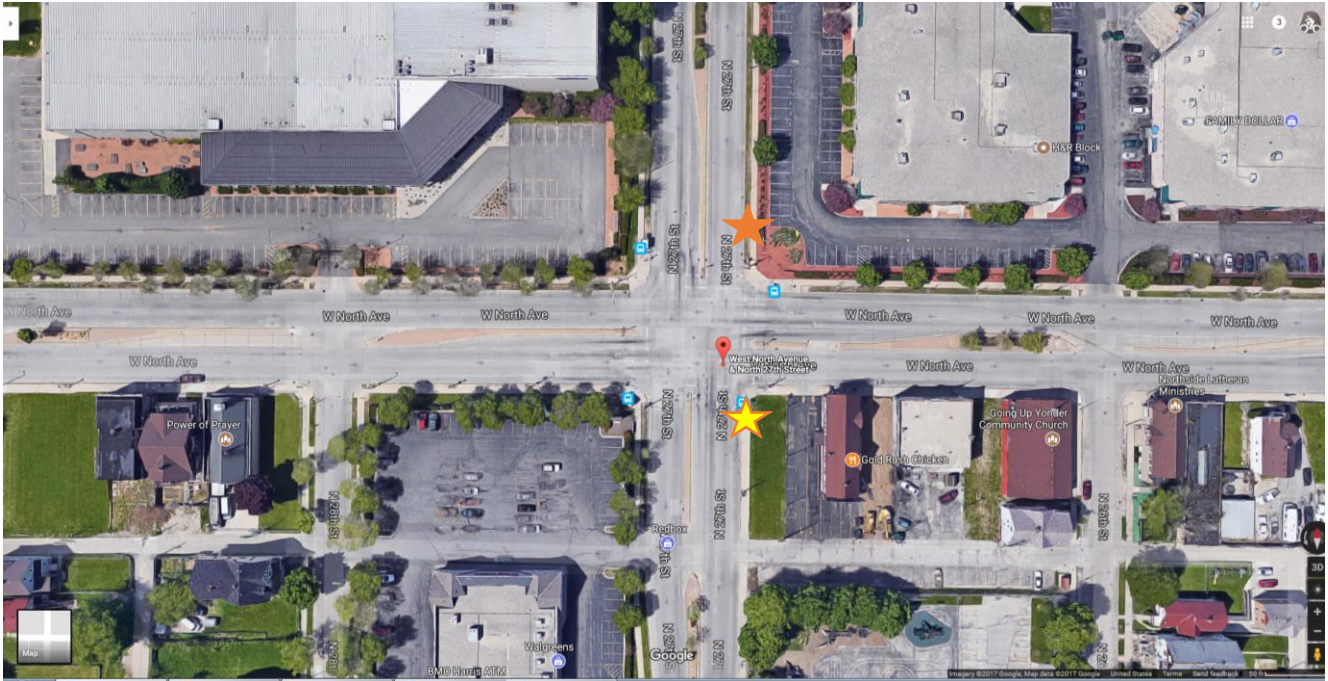
## Wisconsin & Milwaukee (mid-block) – Eastbound - Stop 65



- Orange = proposed stop
- Yellow = current stop
- Ridership: multiple routes = 29 ons / 2 off. Stop includes Summerfest shuttle stop.
- Proximity to adjacent stops:
- Aldermanic District: 4<sup>th</sup> - Robert Bauman
- Supervisor District: 5<sup>th</sup> - Marcelia Nicholson
- Currently ADA Compliant:
- Pedestrian Safety: Sidewalks
- Parking Spaces effected:
- Stop history:
- Notes: **The bus stop committee recommends denial of this request.**

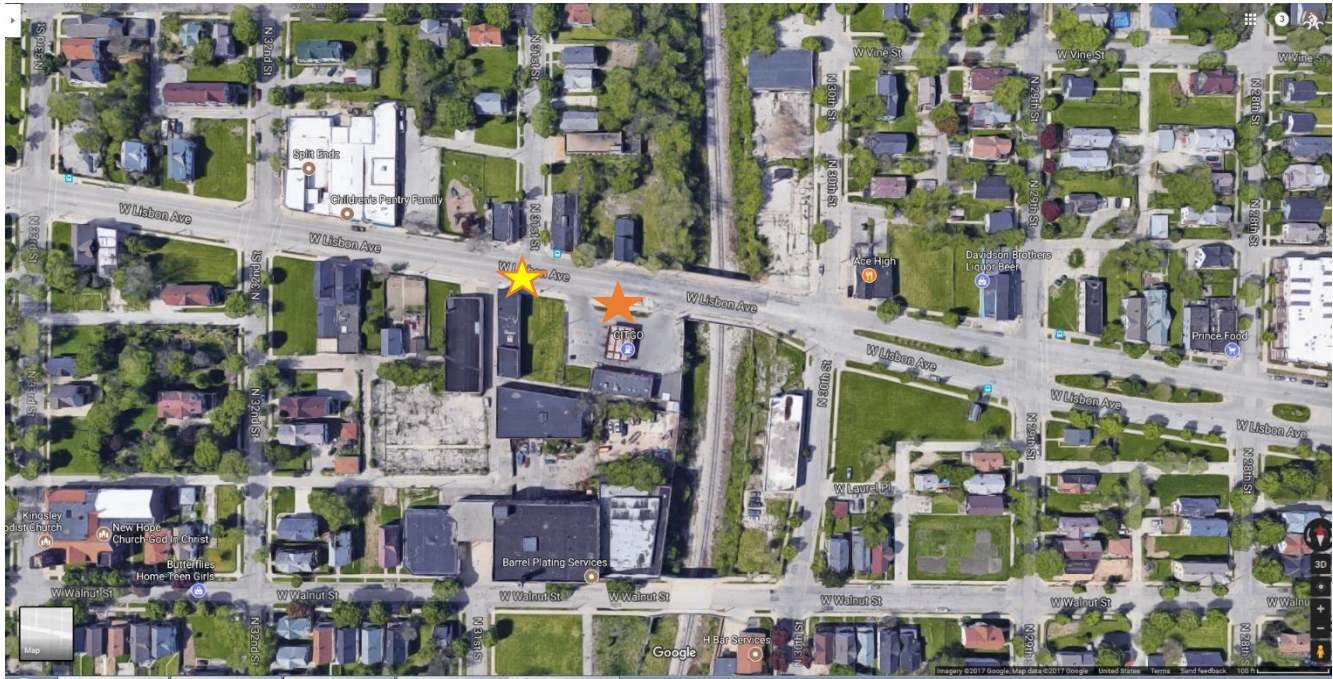


## N. 27th & North – Northbound - Stop 4064



- Orange = proposed stop
- Yellow = current stop
- Ridership: Purple Line 88 on / 132 off & RT 27 72 on / 90 off *Total: 160 on / 222 off*
- Proximity to adjacent stops:
- Aldermanic District: 15<sup>th</sup> - Russell W. Stamper, II
- Supervisor District: 10<sup>th</sup> - Supreme Moore Omokunde (on the border with 5<sup>th</sup> Marcelia Nicholson)
- Currently ADA Compliant: Yes
- Pedestrian Safety: Sidewalks, potentially use the shelter installed in 2016.
- Parking Spaces effected:
- Stop history:
- Notes: The committee recommends approval to move the stop farside pending a concrete pad is in-place at the new location.

## N. 31<sup>st</sup> & Lisbon – Eastbound - Stop 5541



- Orange = proposed stop
- Yellow = current stop
- Ridership: 8 on / 9 off
- Proximity to adjacent stops:
- Aldermanic District: 15<sup>th</sup> - Russell W. Stamper, II
- Supervisor District: 5<sup>th</sup> – Marcelia Nicholson
- Currently ADA Compliant: No
- Pedestrian Safety: Sidewalk
- Parking Spaces effected:
- Stop history:
- Notes: **The bus stop committee recommends moving the stop from a T-intersection to the gas station.**