

PROJECT

Proposed New
Parking Lot
For El Rey
Grocery Store
1540-42-46
West Mineral St.
Milwaukee, WI

PROJECT NO. 04-24

DATE 5/4/09

REVISIONS

NO.	DESCRIPTION

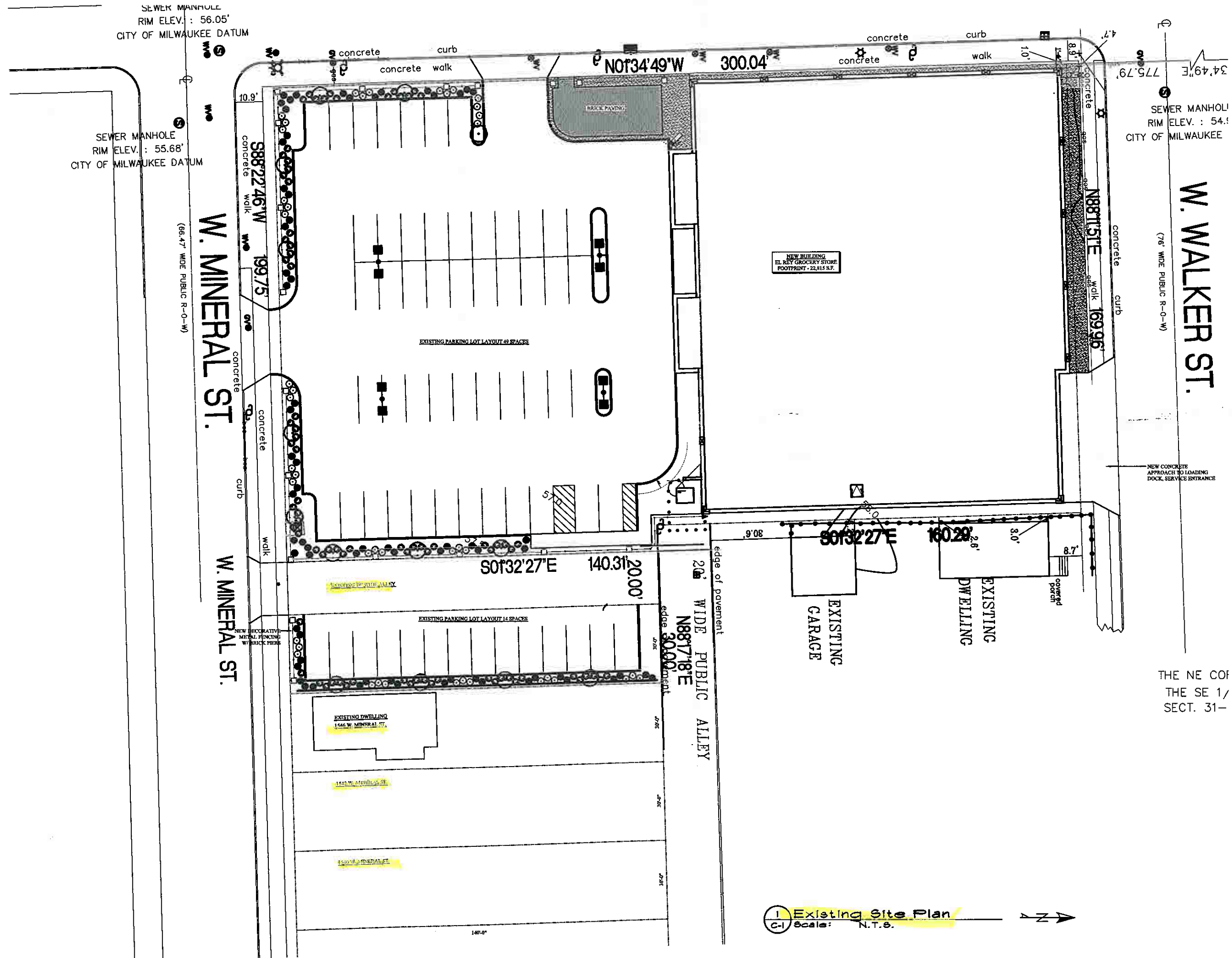
CHECKED BY L.B.

DRAWN BY M.N.

SCALE as noted

SHEET NO. C-1

SHEET TITLE



1 Existing Site Plan
Scale: N.T.S.

THE NE COR
THE SE 1/
SECT. 31-

SEWER MANHOLE
RIM ELEV. : 56.05'
CITY OF MILWAUKEE DATUM

SEWER MANHOLE
RIM ELEV. : 55.68'
CITY OF MILWAUKEE DATUM

SEWER MANHOLE
RIM ELEV. : 54.1'
CITY OF MILWAUKEE

W. MINERAL ST.
(66.47' WIDE PUBLIC R-0-W)

W. MINERAL ST.

W. WALKER ST.
(76' WIDE PUBLIC R-0-W)

NEW BUILDING
EL REY GROCERY STORE
FOOTPRINT - 22,814 S.F.

EXISTING PARKING LOT LAYOUT 49 SPACES

EXISTING PARKING LOT LAYOUT 14 SPACES

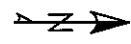
EXISTING DWELLING
1546 W. MINERAL ST.

1542 W. MINERAL ST.

1540 W. MINERAL ST.

edge of pavement
20' WIDE PUBLIC ALLEY

NEW CONCRETE
APPROACH TO LOADING
DOCK, SERVICE ENTRANCE



PROJECT
 Proposed New
 Parking Lot
 For El Rey
 Grocery Store
 1540-42-46
 West Mineral St.
 Milwaukee, WI

PROJECT NO. 04-24

DATE 5/8/09

REVISIONS

NO.	DESCRIPTION

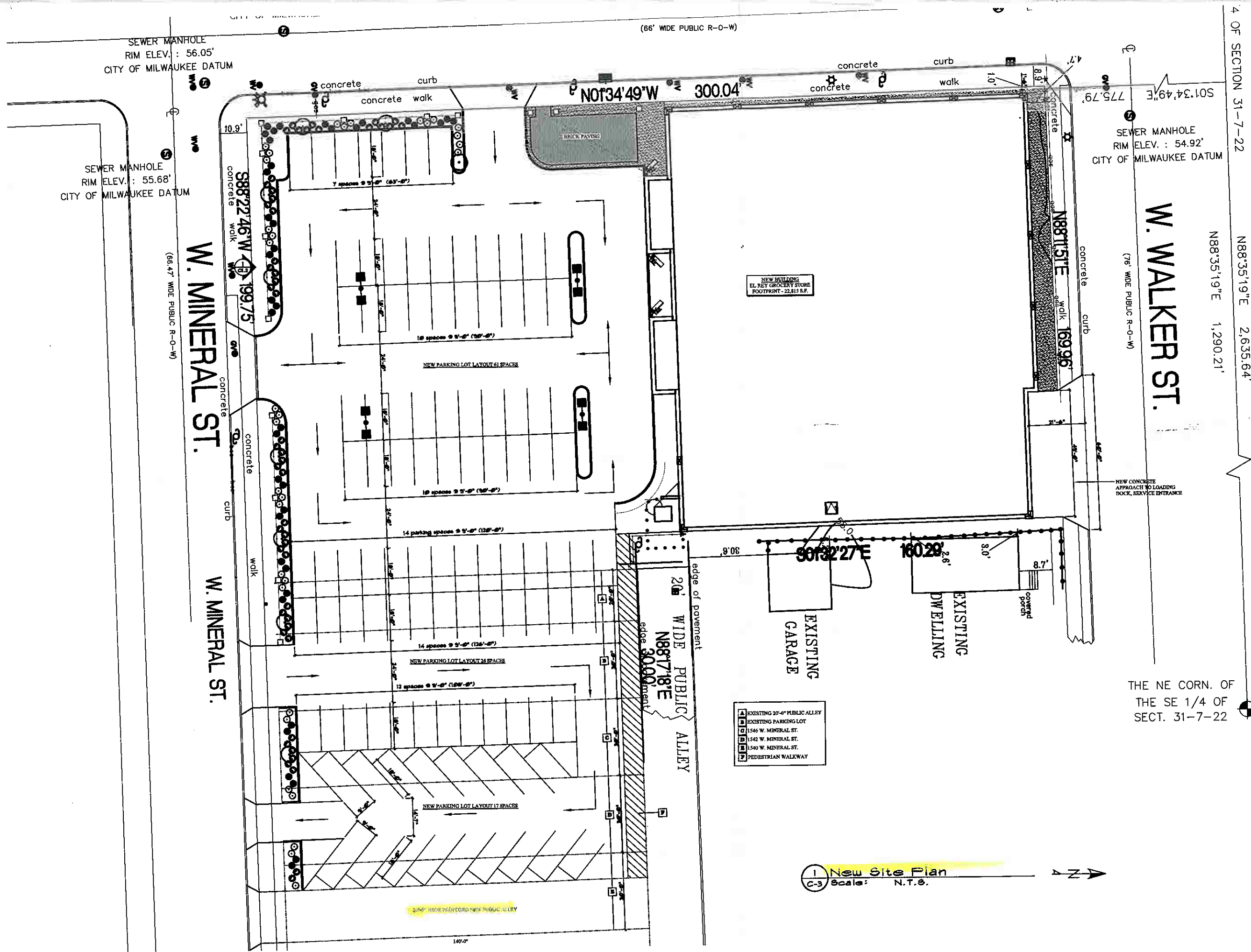
CHECKED BY L.B.

DRAWN BY M.N.

SCALE as noted

SHEET NO. C-3

SHEET TITLE



1 New Site Plan
 C-3 Scale: N.T.S.