

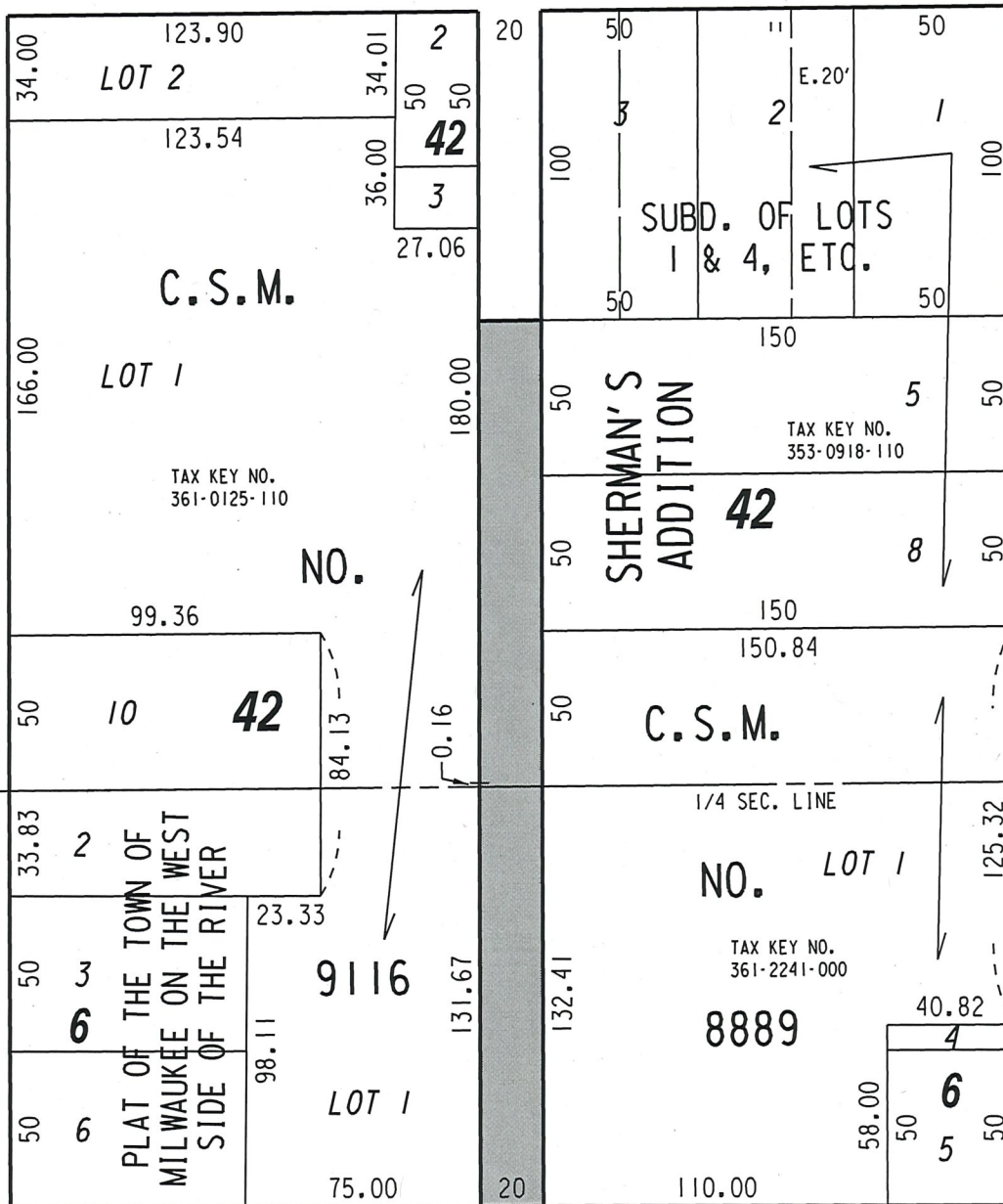
W. Vine

(80' R.O.W.)

St.

St.

(70' R.O.W.)



W. Walnut

(100' R.O.W.)

St.



PORTION OF PUBLIC ALLEY PROPOSED TO BE VACATED

EXHIBIT "A"

FILE NO. 190652

INFRASTRUCTURE SERVICES DIVISION

MILWAUKEE, WISCONSIN

ASSIGNED TO: W. FUCHS

CH'K'D. BY: W. FUCHS

DRAWN BY: W.F.

DATE: AUGUST 29, 2019

PROJECT/GRANT NO.: WK52337426

SCALE: 1" = 60'

APPROVED BY:

*John Hart*

*[Signature]*

CENTRAL DRAFTING & RECORDS MANAGER

CITY ENGINEER