

2021-09-21



MCTS Proposed Bus Stop Locations City of Milwaukee September 2021



David Locher
Transportation Manager
414-343-1727
dlocher@mcts.org

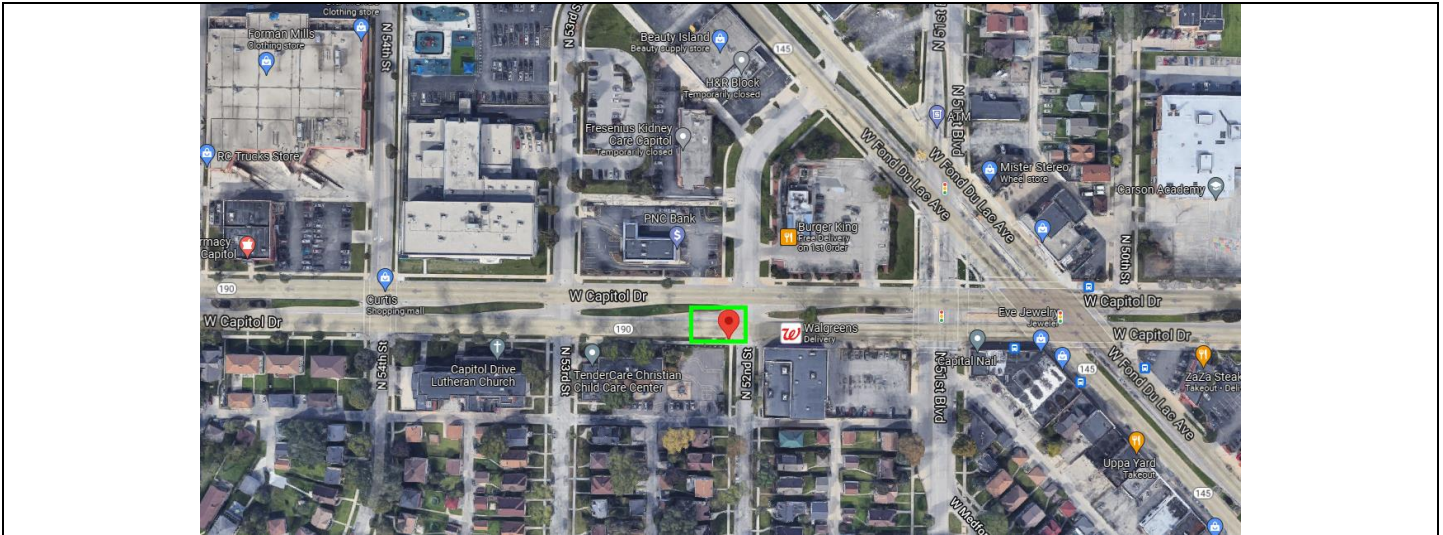
BUS STOP ID #9575	NORTHBOUND PARK PLACE & 11414 W (NEAR SIDE) #9575 (43.152464, -88.054014)
-------------------	---



Route(s)	BlueLine
Reason for New Location	New routing for MCTS Next (MCTS NEXT MAP)
Distance from previous stop	0.4 miles, NB N110 & PARK PLACE #7586 (43.149191, -88.049520)
Distance to following stop	0.1 miles, NB PARK PLACE & 11600 W #7582 (43.154151, -88.055107)
Parking Impacts	NO PARKING BUS STOP signage not required at this time
Mobility/Accessibility	Mobility standards met
Pedestrian Safety	Access to sidewalk
County Supervisor	Russell Antonio Goodwin, Sr., Dist. 18
City Alderperson	Nikiya Dodd, Dist. 5

Additional Information/Comments

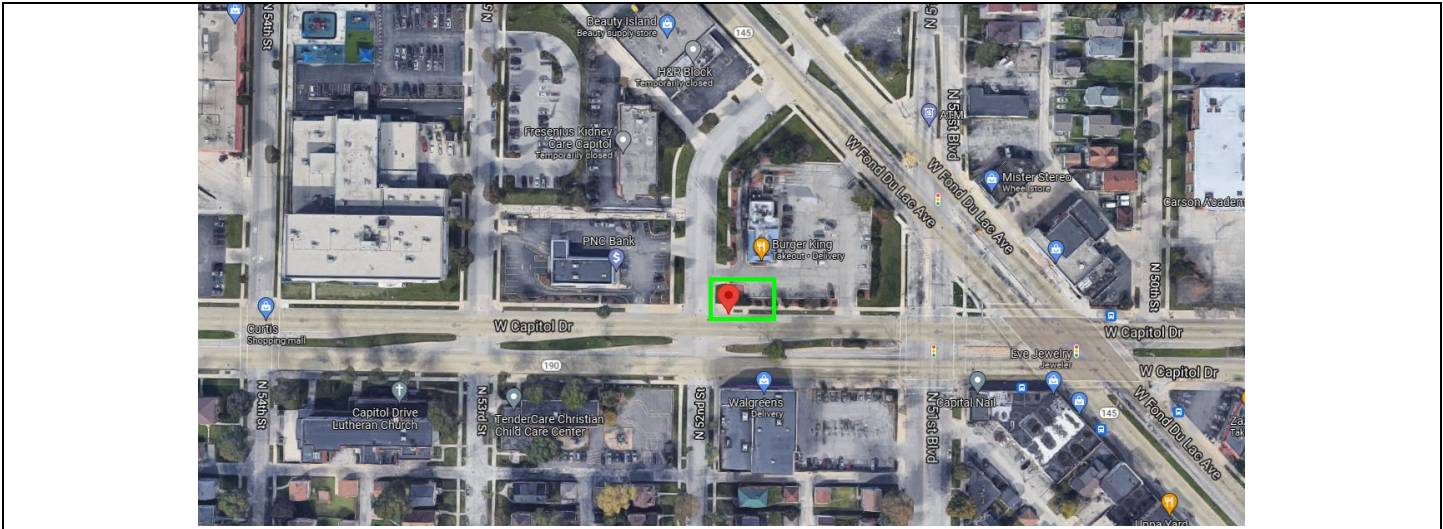
BUS STOP ID #6029	EASTBOUND CAPITOL & N52 (NEAR SIDE) #6029 (43.089774, -87.978449)
-------------------	---



Route(s)	RedLine
Reason for New Location	Public request, reinstate previously active bus stop
Distance from previous stop	0.3 miles, EB CAPITOL & N56 #6027 (43.089817, -87.983444)
Distance to following stop	0.1 miles, EB CAPITOL & FOND DU LAC #6030 (43.089756, -87.976539)
Parking Impacts	Currently signed NO PARKING BUS STOP: S/S W Capitol Dr from N 52 nd St to west 80'
Mobility/Accessibility	Mobility standards met
Pedestrian Safety	
County Supervisor	Sequanna Taylor, Dist. 2
City Alderperson	Khalif J. Rainey, Dist. 7

Additional Information/Comments
 Active Route 62 stop until December 2017. NO PARKING BUS STOP remains posted.

BUS STOP ID #6089	WESTBOUND CAPITOL & N52 (NEAR SIDE) #6089 (43.090031, -87.978172)
-------------------	---

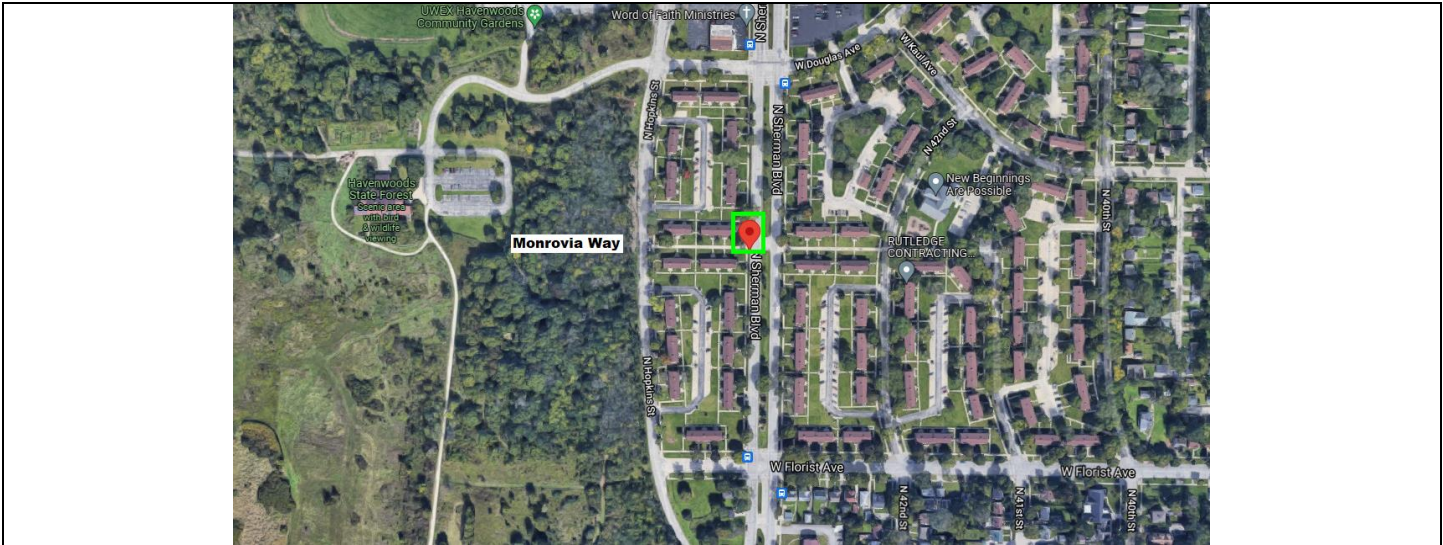


Route(s)	RedLine
Reason for New Location	New routing for MCTS Next (MCTS NEXT MAP)
Distance from previous stop	0.1 miles, WB CAPITOL & FOND DU LAC #6088 (43.090016, -87.976176)
Distance to following stop	0.3 miles, WB CAPITOL & 56TH STREET #6091 (43.090077, -87.982981)
Parking Impacts	None
Mobility/Accessibility	Mobility standards met
Pedestrian Safety	
County Supervisor	Sequanna Taylor, Dist. 2
City Alderperson	Cavalier Johnson, Dist. 2

Additional Information/Comments

Active Route 62 stop until December 2017. Bench on site (owned by others).

BUS STOP ID #905 SOUTHBOUND SHERMAN & MONROVIA (MIDBLOCK) #905 (43.128340, -87.966286)

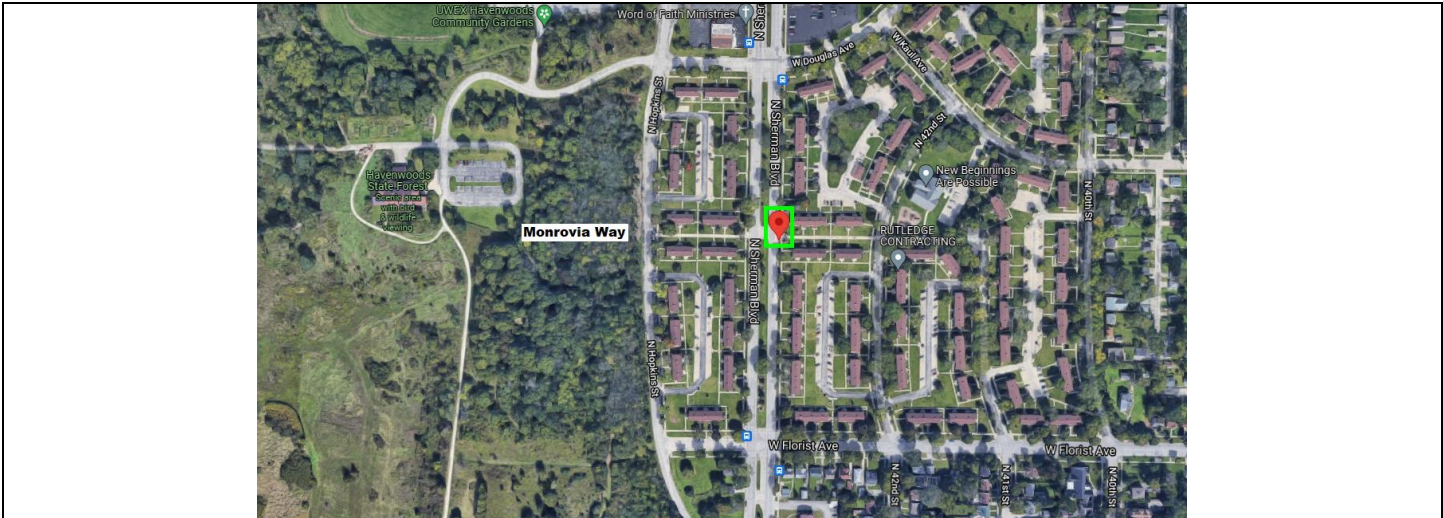


Route(s)	Routes 30 & 35
Reason for New Location	Public request, reinstatement of retired bus stop
Distance from previous stop	400-ft, SB SHERMAN & DOUGLAS (FARSIDE) #906 (43.129509, -87.966260)
Distance to following stop	0.1 miles (528-ft), SB SHERMAN & FLORIST #4284 (43.126759, -87.966318)
Parking Impacts	Mid-block stop: 120' (Traffic Code 101-23-7-c-2) or as currently posted.
Mobility/Accessibility	Mobility standards met
Pedestrian Safety	
County Supervisor	Liz Sumner, Dist. 1
City Alder	Ashanti Hamilton, Dist. 1

Additional Information/Comments

NO PARKING BUS STOP remains posted, confirmed by MCTS.

BUS STOP ID #4283	NORTHBOUND SHERMAN & MONROVIA (MID-BLOCK) #4283 (43.128332, -87.965930)
-------------------	---

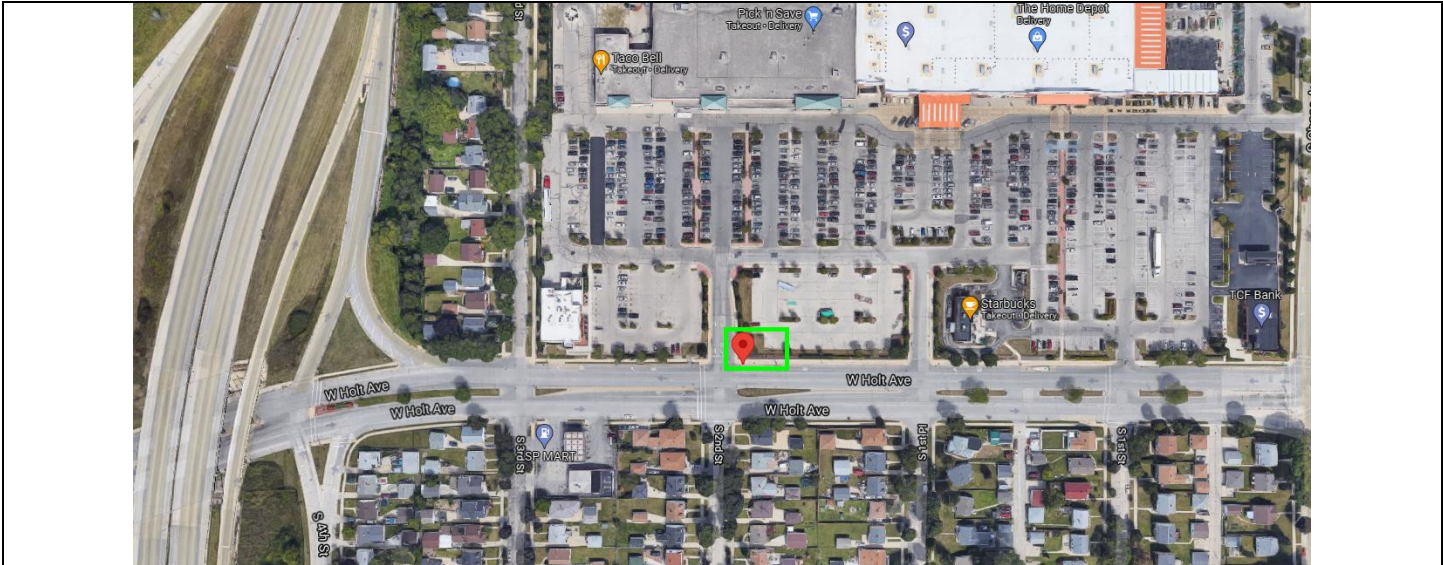


Route(s)	Routes 30 & 35
Reason for New Location	Public request, reinstatement of retired bus stop
Distance from previous stop	0.1 miles (528-ft), NB SHERMAN & FLORIST #304 (43.126545, -87.965958)
Distance to following stop	479-ft, NB SHERMAN & DOUGLAS #5756 (43.129650, -87.965901)
Parking Impacts	Mid-block stop: 120' (Traffic Code 101-23-7-c-2) or as currently posted.
Mobility/Accessibility	Mobility standards met
Pedestrian Safety	
County Supervisor	Liz Sumner, Dist. 1
City Alders	Ashanti Hamilton, Dist. 1

Additional Information

NO PARKING BUS STOP remains posted, confirmed by MCTS.

BUS STOP ID #2781	WESTBOUND HOLT & S2 (NEAR SIDE) #2781 (42.982559, -87.913035)
-------------------	---



PREVIOUSLY ACTIVE UNTIL JUNE 2019

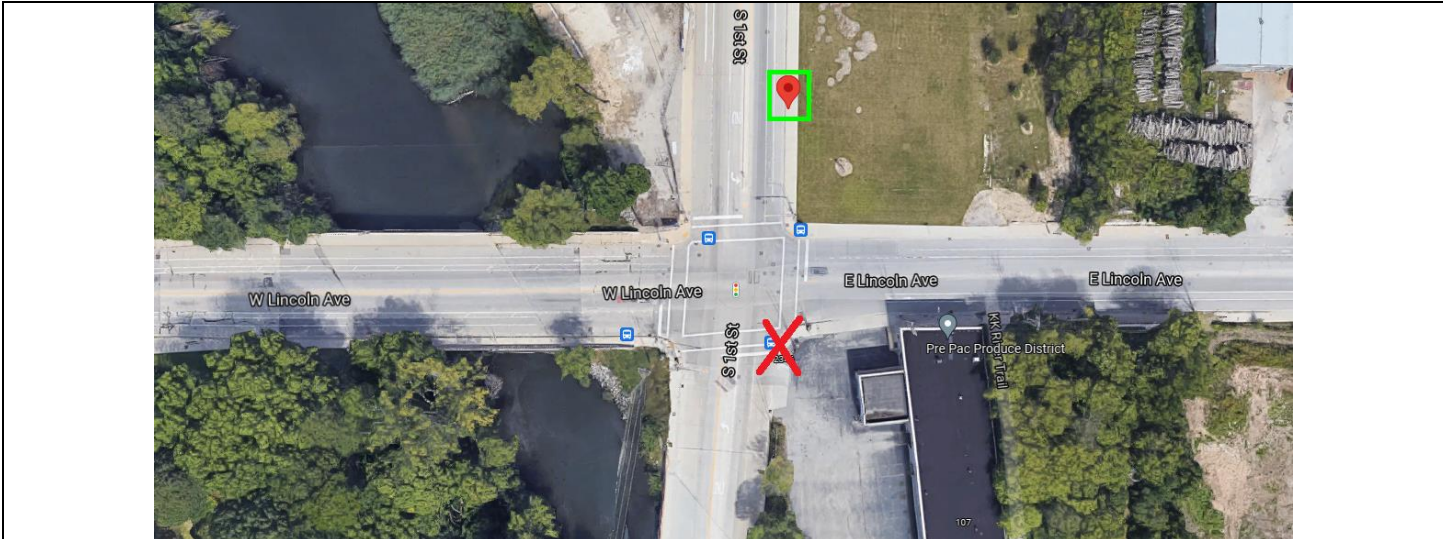


Route(s)	Route 54
Reason for New Location	New routing for MCTS Next (MCTS NEXT MAP)
Distance from previous stop	450-ft, WB HOLT & S1 (LAYOVER) #4959 (42.982553, -87.911337)
Distance to following stop	0.3 miles, WB HOLT & S6 #9570 (42.981863, -87.918762)
Parking Impacts	No impacts
Mobility/Accessibility	Mobility standards met
Pedestrian Safety	Signalized crosswalk
County Supervisor	Jason Haas, Dist. 14
City Alderperson	Marina Dimitrijevic, Dist. 14

Additional Information/Comments

Former Route 50 stop. Route 50 was retired Summer of 2019; AM/PM school tripper that did not return for the Fall 2019 school year.

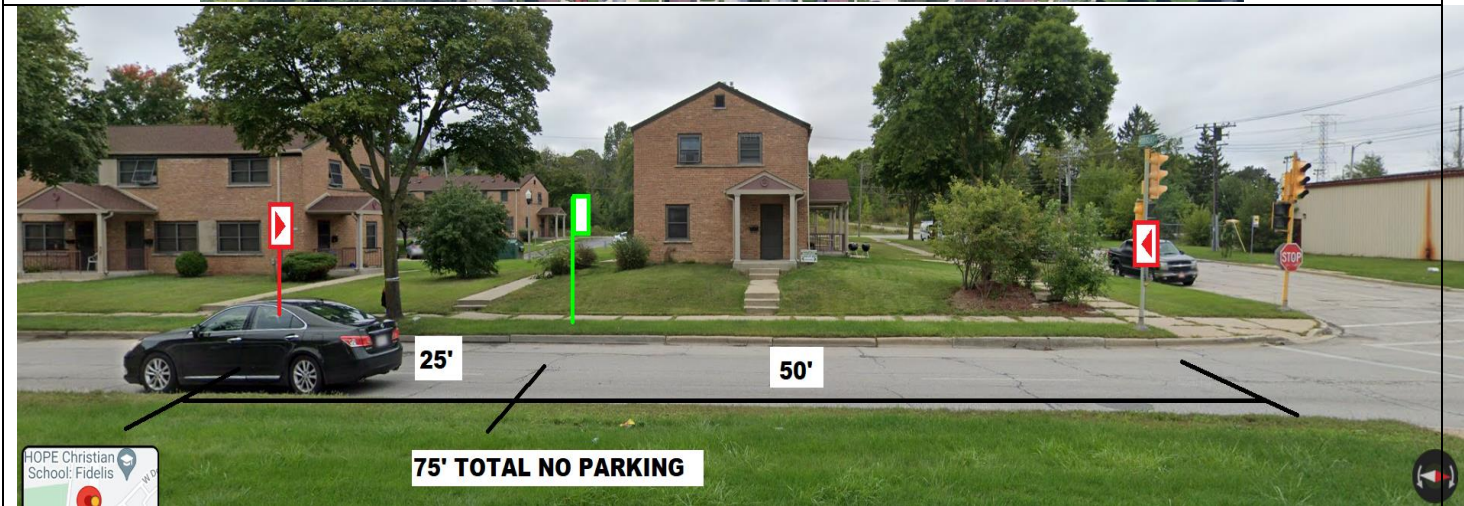
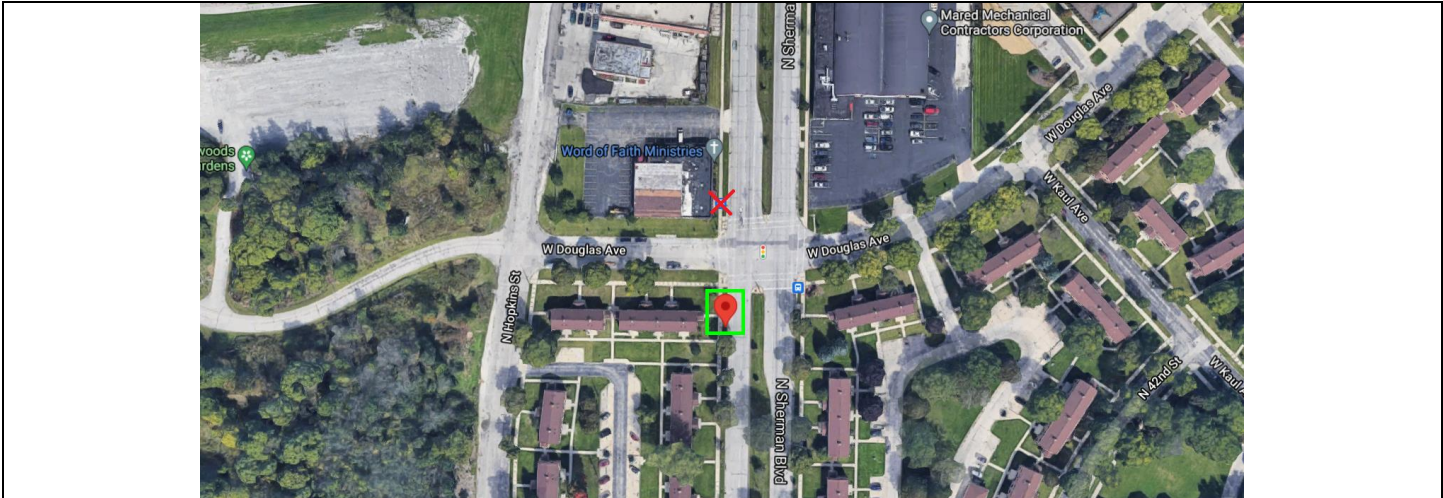
BUS STOP ID #8019	NORTHBOUND 1ST STREET & LINCOLN (FARSIDE) #8019 (43.003190, -87.911191)
-------------------	---



Route(s)	Route 54
Reason for New Location	Currently a nearside stop. Relocate to farside to improve mobility/accessibility.
Distance from previous stop	0.5 miles, NB CHASE & ROSEDALE #254 (42.995902, -87.911818)
Distance to following stop	0.2 miles, NB 1ST & BECHER #5332 (43.006427, -87.911114)
Parking Impacts	Request NO PARKING BUS STOP: E/S S 1 st St from E Lincoln Ave to north 105'
Mobility/Accessibility	Mobility standards met
Pedestrian Safety	Signalized intersection & crosswalk
County Supervisor	Ryan Clancy, Dist. 4
City Alderperson	Marina Dimitrijevic, Dist. 14

Additional Information/Comments

BUS STOP ID #906	SOUTHBOUND SHERMAN + DOUGLAS (FARSIDE) #906 (43.129509, -87.966260)
------------------	---



Route(s)	Routes 30, 35
Reason for New Location	Business owner request. 5161 N Sherman Blvd Grace Funeral Home
Distance from previous stop	0.3 miles, EB SHERMAN & MILL (R TURN SLIP LANE) (43.133724, -87.966285)
Distance to following stop	400-ft SB SHERMAN & MONROVIA WAY (43.128339, -87.966284)
Parking Impacts	W/S N Sherman Blvd from W Douglas Ave radius traffic regulator to south 75'
Mobility/Accessibility	Currently no boarding pad, passengers board in grass terrace. Coordinate future upgrade if possible.
Pedestrian Safety	Near signalized intersection and crosswalk
County Supervisor	Sequanna Taylor, Dist. 2 (original location); Liz Sumner, Dist. 1 (proposed location)
City Alders	Chantia Lewis, Dist. 9 (original location); Ashanti Hamilton, Dist. 1 (proposed location)

Additional Information/Comments