

2024 MHD ANNUAL REPORT

DEPARTMENT HIGHLIGHTS

PUBLIC SAFETY & HEALTH | 07/03/2025



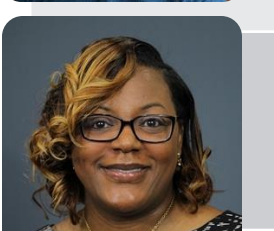
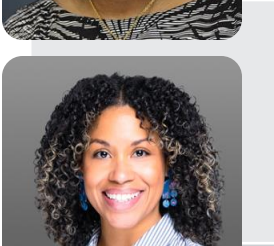
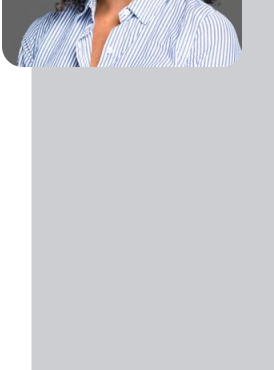


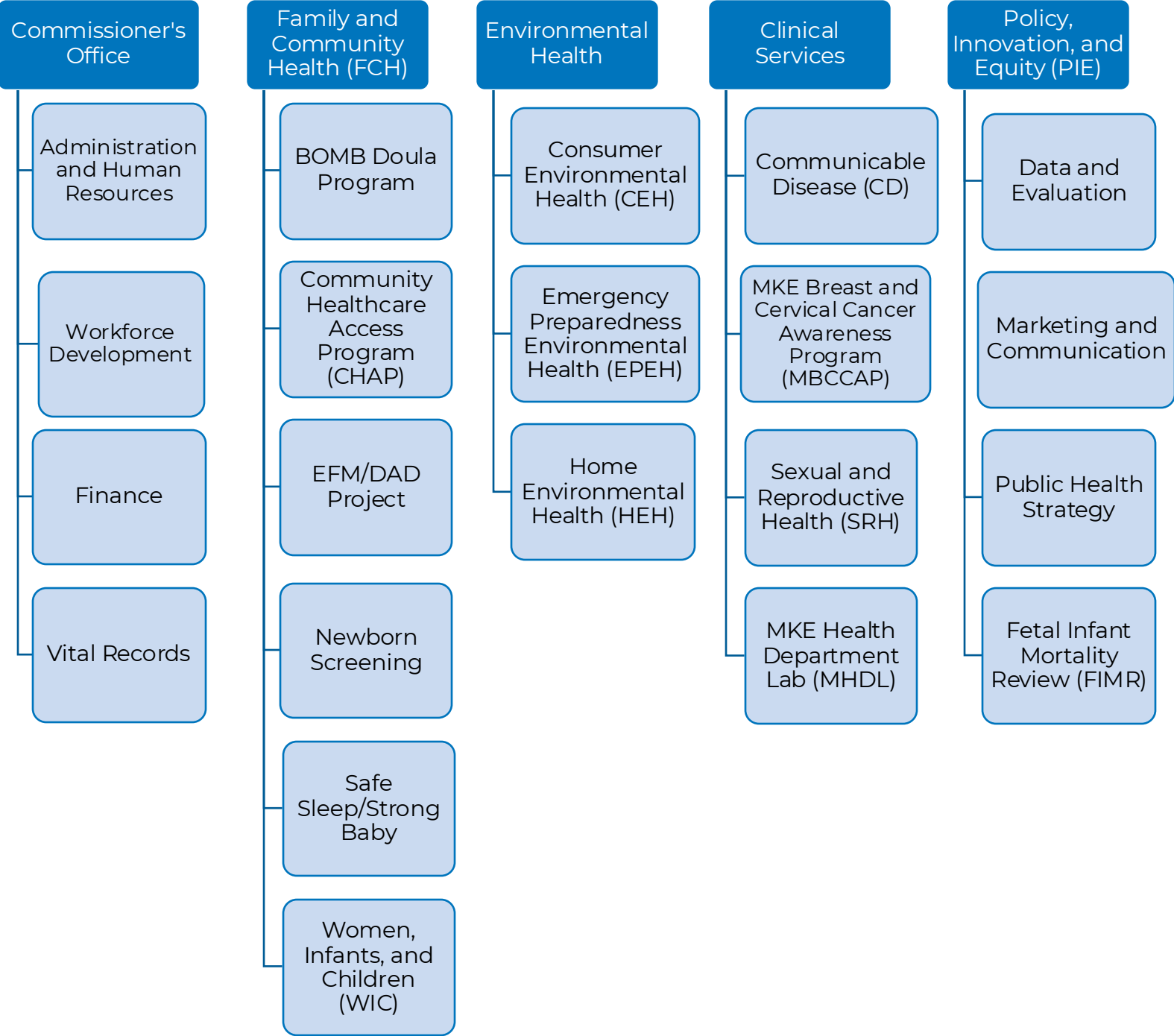
DEPARTMENT OVERVIEW

KEY ACCOMPLISHMENTS

- Supported the **Republican National Convention** with key food safety, emergency preparedness, epidemiologic, surveillance, and communications services
- Published MHD's **First Racial Equity Report**
- Transitioned to a **new Electronic Health Record** (EHR), OCHIN Epic
- Joined the Milwaukee Healthcare Partnership in **formally aligning** community needs & health assessments of MHD, the health systems, and Milwaukee County DHHS
- Celebrated the **150th Anniversary** of the Milwaukee Health Department Laboratory (MHDL)



	Department/Branch Lead	Branch/Office	Programs and Divisions	
	Dr. Mike Totoraitis Commissioner of Health	Office of the COMMISSIONER	<ul style="list-style-type: none"> Human Resources and Compliance Budget and Finance Administration Executive Leadership and Health Officer 	
	Tyler Weber Deputy Commissioner of Environmental Health	ENVIRONMENTAL HEALTH (EH)	<ul style="list-style-type: none"> Home Environmental Health (Lead) Emergency Response Consumer Environmental Health 	
	Jefflyn Brown Deputy Commissioner of Clinical Services	CLINICAL SERVICES	<ul style="list-style-type: none"> Sexual and Reproductive Health Infectious Disease (TB/Imms/CD) Well Woman Public Health Laboratory 	
	Dominique Hyatt-Oates Deputy Commissioner of Policy, Innovation, and Equity	POLICY, INNOVATION AND EQUITY (PIE)	<ul style="list-style-type: none"> Data & Evaluation Epidemiology Public Health Strategy Communications, Media, and Marketing 	
	Vacant Deputy Commissioner of Family and Community Health	FAMILY AND COMMUNITY HEALTH (FCH)	<ul style="list-style-type: none"> EFM/DAD Project (Home Visiting) BOMB Doula Strong Baby Newborn Screening 	<ul style="list-style-type: none"> Safe Sleep WIC CHAP Customer Service/Health Center Ops



DEPARTMENT STRUCTURE

MATERNAL & CHILD HEALTH

KEY HIGHLIGHTS

BOMB Doula Program

- Hired a **second program coordinator** to support expansion and client demand
- Awarded the Maternal Innovation Grant to design a **DAD Doula program** focused on increasing father engagement during pregnancy, birth, and beyond

Strong Baby and Safe Sleep Programs

- Transitioned the Cribs for Kids program to the **Safe Sleep Milwaukee** program, which employs **harm-reduction model** for those in need of a Pack 'n Play
 - 493 clients served, a 30% increase from 2023



ENVIRONMENTAL HEALTH

KEY HIGHLIGHTS

Emergency Preparedness Environmental Health (EPEH)

- Enhanced data tracking by updating existing platforms to improve incident reporting and epidemiological monitoring
- Led department-wide **mass dispensing trainings** to ensure RNC readiness

Home Environmental Health (HEH)

- Strengthened enforcement through multi-agency collaboration, increasing reinspection fees and citations upheld in favor of MHD
- Expanded contractor capacity, finalizing agreements with **seven new lead abatement contractors** through the RFP process



CLINICAL SERVICES

KEY HIGHLIGHTS

Communicable Disease (CD)

- Responded to a significant increase in pertussis cases, completing follow-up on **88 confirmed cases**
- Rapidly responded to a case of Hepatitis A in a food handler, launching vaccination clinics for potentially exposed individuals

Sexual and Reproductive Health (SRH)

- Expanded services to include Hepatitis C screening and Doxycycline Post-Exposure Prophylaxis (DoxyPEP)
- Stabilized Disease Intervention Specialist (DIS) staffing **linked 92% of individuals newly diagnosed with HIV to care within one month**

Milwaukee Health Department Laboratory

- Hosted the National Biowatch Program during the RNC
- Expanded the lab's testing capacity by **adding Flu and RSV** to the MHD Wastewater Dashboard as well as providing **new Hepatitis C testing** at Keenan Sexual Health Clinic



POLICY, INNOVATION, & ENGAGEMENT (PIE)

KEY HIGHLIGHTS

- Led the **Public Health Surveillance Workgroup** for the Republican National Convention, developing a Surveillance Concept of Operations Plan in partnership with local, county, and state stakeholders
- Introduced MHD's **inaugural Racial Equity Report** to the Board of Health in October 2024, aligning with broader efforts to advance equity in public health practice
- Advanced departmental performance management by working with divisions to establish **Key Performance Indicators (KPIs)** aligned with program goals and community outcomes

