

928 N. 29TH STREET RENOVATION

928 N. 29th Street
Milwaukee, Wisconsin 53208

HPC SUBMISSION



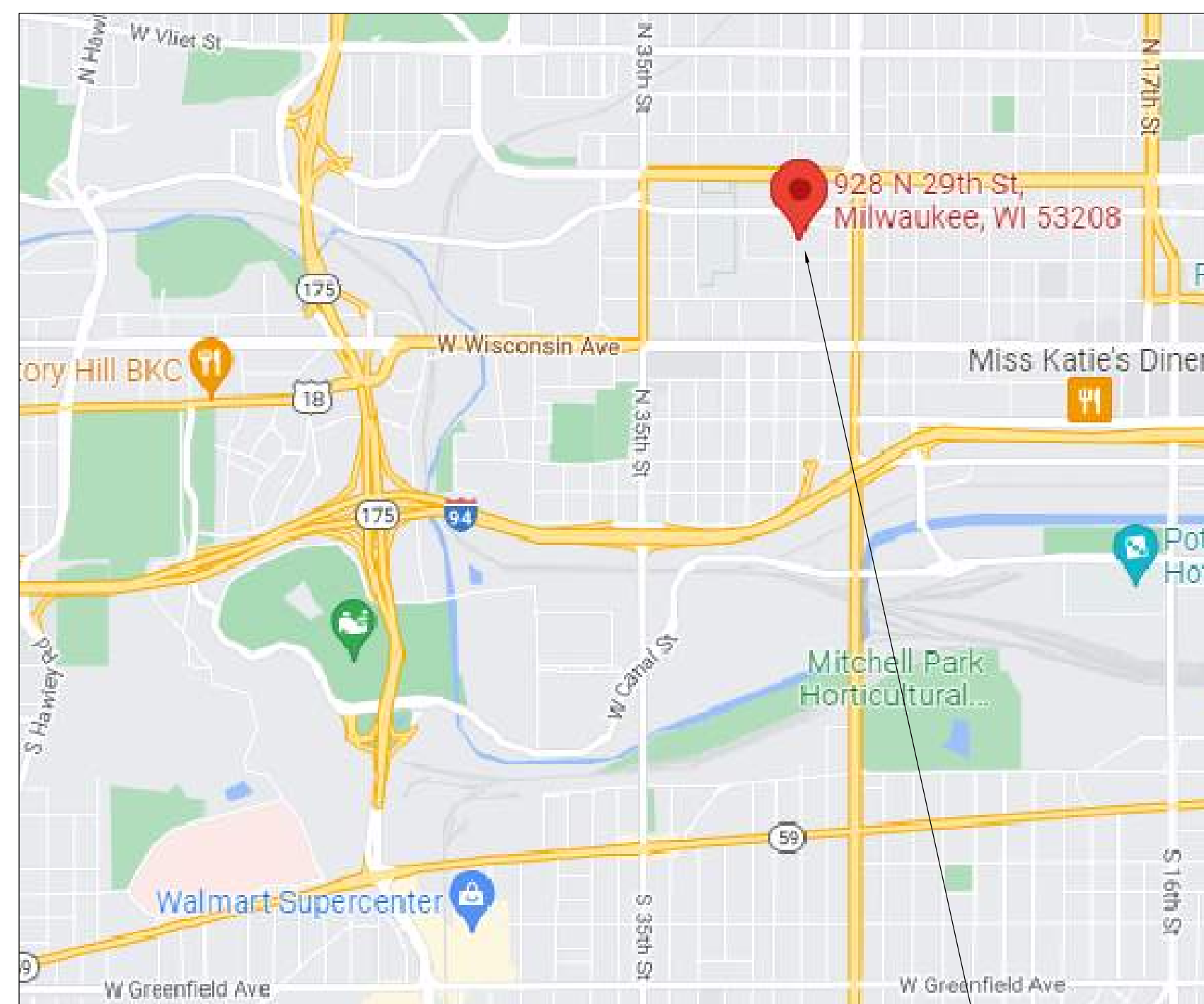
Quorum Architects, Inc.
3112 West Highland Boulevard
Milwaukee, Wisconsin 53208
Phone: 414.265.9265
Fax: 414.265.9465
www.quorumarchitects.com

DRAFT
PRELIMINARY
NOT FOR
CONSTRUCTION
QUORUM ARCHITECTS, INC.

DATE: MARCH 08, 2022

PROJECT NUMBER: 22008.00

LOCATION MAP:



CONTACT INFORMATION:

ARCHITECTURAL

QUORUM ARCHITECTS, INC.
3112 West Highland Boulevard
Milwaukee, WI 53208
Phone: (414) 265-9265
Fax: (414) 265-9465
Contact: Allyson Nemecek
Email: allyson@quorumarchitects.com

DRAWING INDEX:

CS COVER SHEET

ARCHITECTURAL

D1.1 FIRST FLOOR DEMOLITION PLAN
D3.1 WEST & SOUTH DEMOLITION ELEVATIONS
D3.2 EAST & NORTH DEMOLITION ELEVATIONS
A1.1 FIRST FLOOR PLAN
A3.1 WEST & SOUTH ELEVATIONS
A3.2 EAST & NORTH ELEVATIONS

928 N. 29TH STREET
RENOVATION
HPC SUBMISSION

Project No.: 22008.00 Date: 03/08/2022



Quorum Architects, Inc.
 3112 West Highland Boulevard
 Milwaukee, Wisconsin 53208
 Phone: 414.265.9265
 Fax: 414.265.9465
 www.quorumarchitects.com

DRAFT
PRELIMINARY
 NOT FOR
 CONSTRUCTION
 QUORUM ARCHITECTS, INC.

**928 N. 29TH STREET
 RENOVATION**

928 N. 29th Street
 Milwaukee, Wisconsin 53208

Revisions:

Sheet Name:
 FIRST FLOOR
 DEMOLITION PLAN

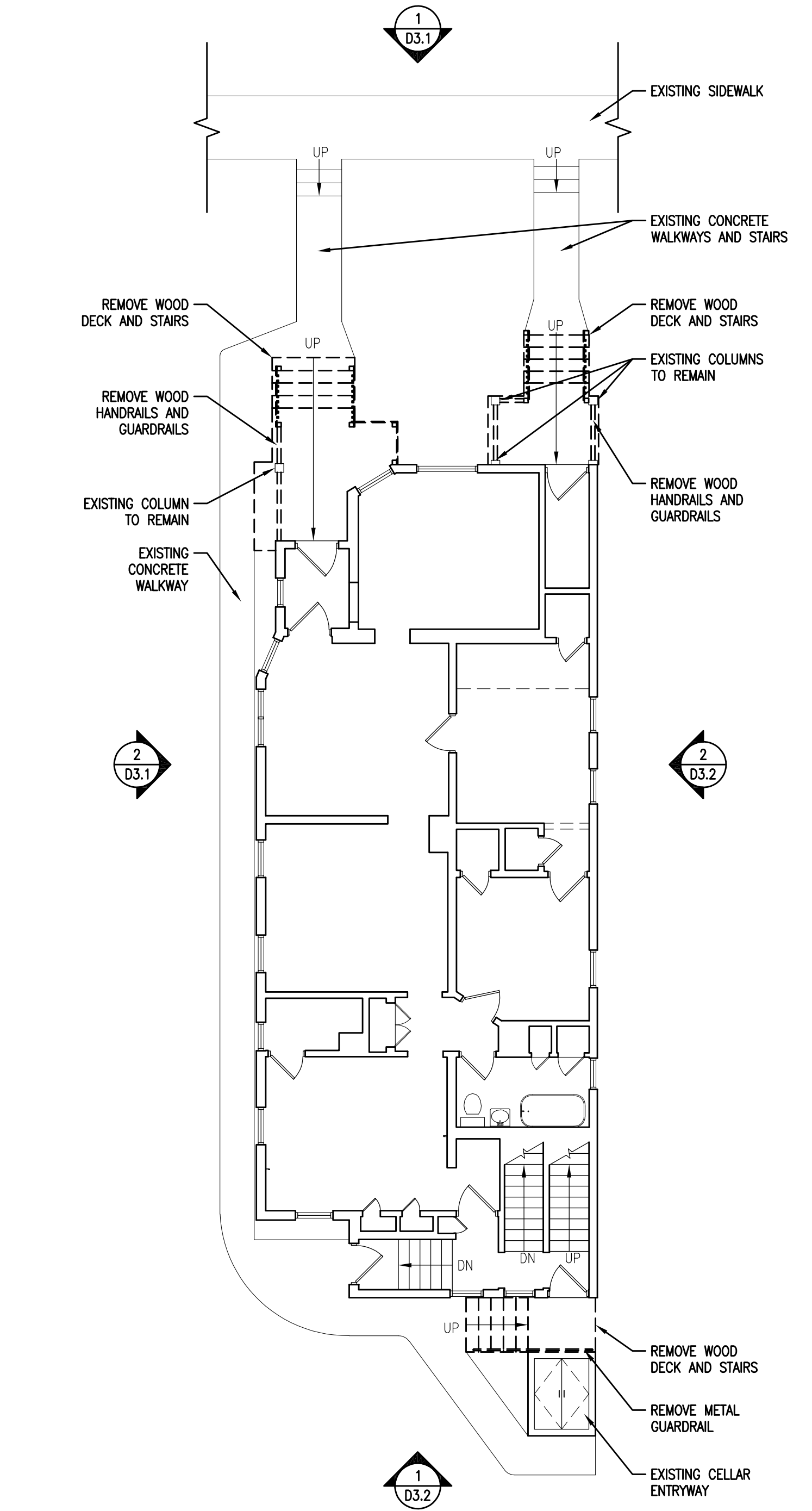
Date: 03/08/2022

Drawn By: ZJT

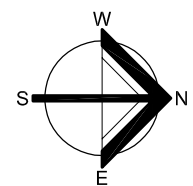
Project No.: 22008.00

Sheet No.

D1.1



1 FIRST FLOOR DEMOLITION PLAN
 SCALE: 1/8" = 1'-0"





Quorum Architects, Inc.
 3112 West Highland Boulevard
 Milwaukee, Wisconsin 53208
 Phone: 414.265.9265
 Fax: 414.265.9465
 www.quorumarchitects.com

DRAFT
PRELIMINARY
 NOT FOR
 CONSTRUCTION
 QUORUM ARCHITECTS, INC.

**928 N. 29TH STREET
 RENOVATION**

928 N. 29th Street
 Milwaukee, Wisconsin 53208

Revisions:

Sheet Name:
 WEST & SOUTH
 DEMOLITION ELEVATIONS

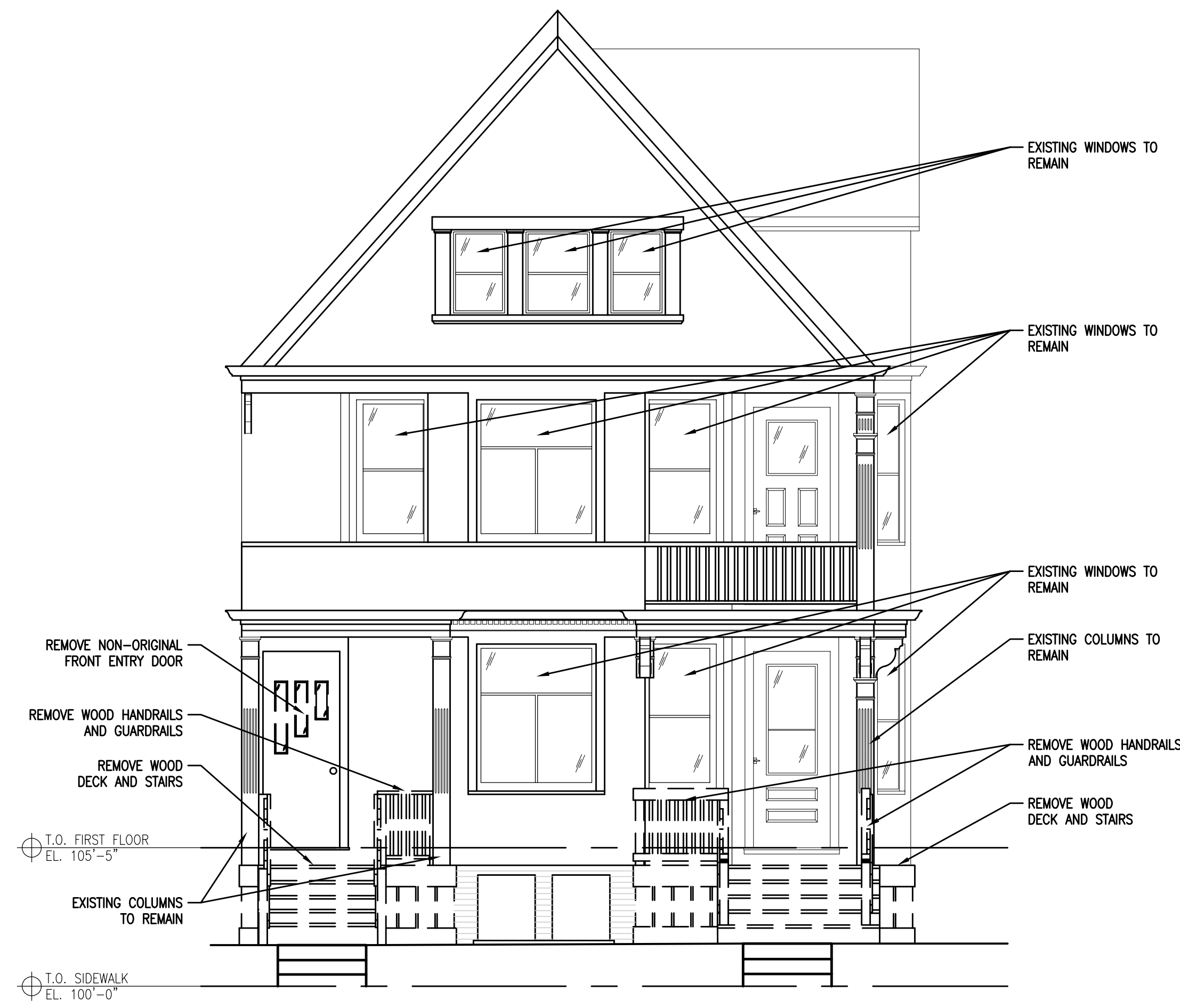
Date: 03/08/2022

Drawn By: ZJT

Project No.: 22008.00

Sheet No.

D3.1



1 WEST ELEVATION
 SCALE: 1/4" = 1'-0"



2 SOUTH ELEVATION
 SCALE: 1/4" = 1'-0"

Mar 08, 2022 - 5:28pm
 O:\22 Projects\22008-00 928 N 29th Street\CD\22008-00-01-1.dwg



Quorum Architects, Inc.
 3112 West Highland Boulevard
 Milwaukee, Wisconsin 53208
 Phone: 414.265.9265
 Fax: 414.265.9465
 www.quorumarchitects.com

DRAFT
PRELIMINARY
 NOT FOR
 CONSTRUCTION
 QUORUM ARCHITECTS, INC.

**928 N. 29TH STREET
 RENOVATION**

928 N. 29th Street
 Milwaukee, Wisconsin 53208

Revisions:

Sheet Name:
 EAST & NORTH
 DEMOLITION ELEVATIONS

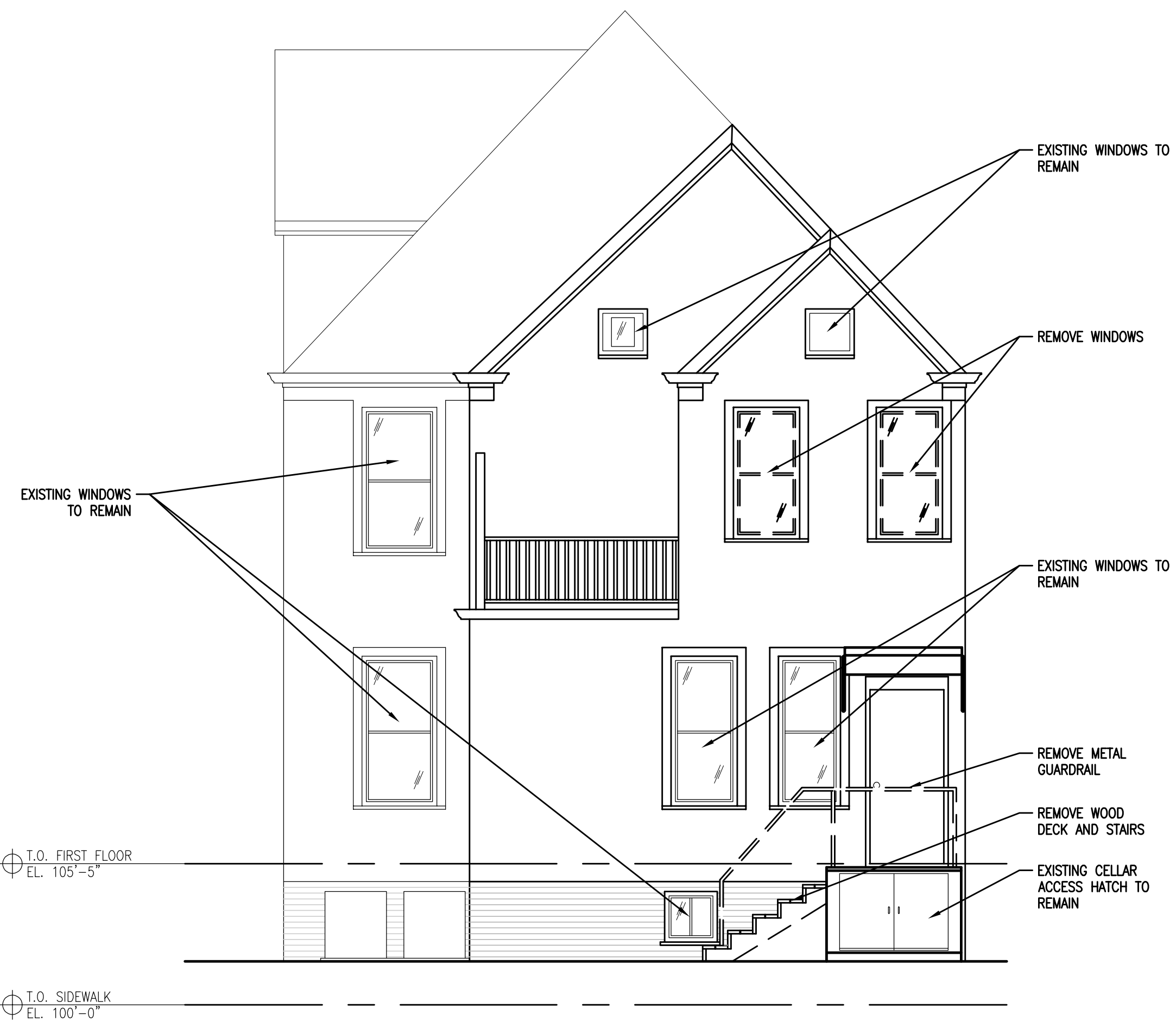
Date: 03/08/2022

Drawn By: ZJT

Project No.: 22008.00

Sheet No.

D3.2

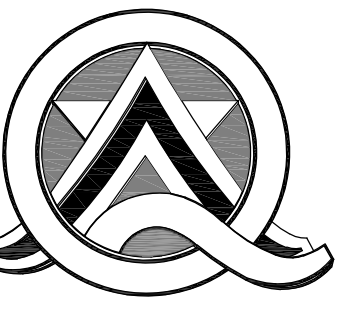


1 EAST ELEVATION
 SCALE: 1/4" = 1'-0"



2 NORTH ELEVATION
 SCALE: 1/4" = 1'-0"

Mar 08, 2022 - 5:29pm
 C:\22 Projects\22008-00 928 N 29th Street\CD\22008-00-D1-1.dwg



Quorum Architects, Inc.
 3112 West Highland Boulevard
 Milwaukee, Wisconsin 53208
 Phone: 414.265.9265
 Fax: 414.265.9465
 www.quorumarchitects.com

DRAFT
PRELIMINARY
 NOT FOR
 CONSTRUCTION
 QUORUM ARCHITECTS, INC.

**928 N. 29TH STREET
 RENOVATION**

928 N. 29th Street
 Milwaukee, Wisconsin 53208

Revisions:

Sheet Name:
 FIRST FLOOR PLAN

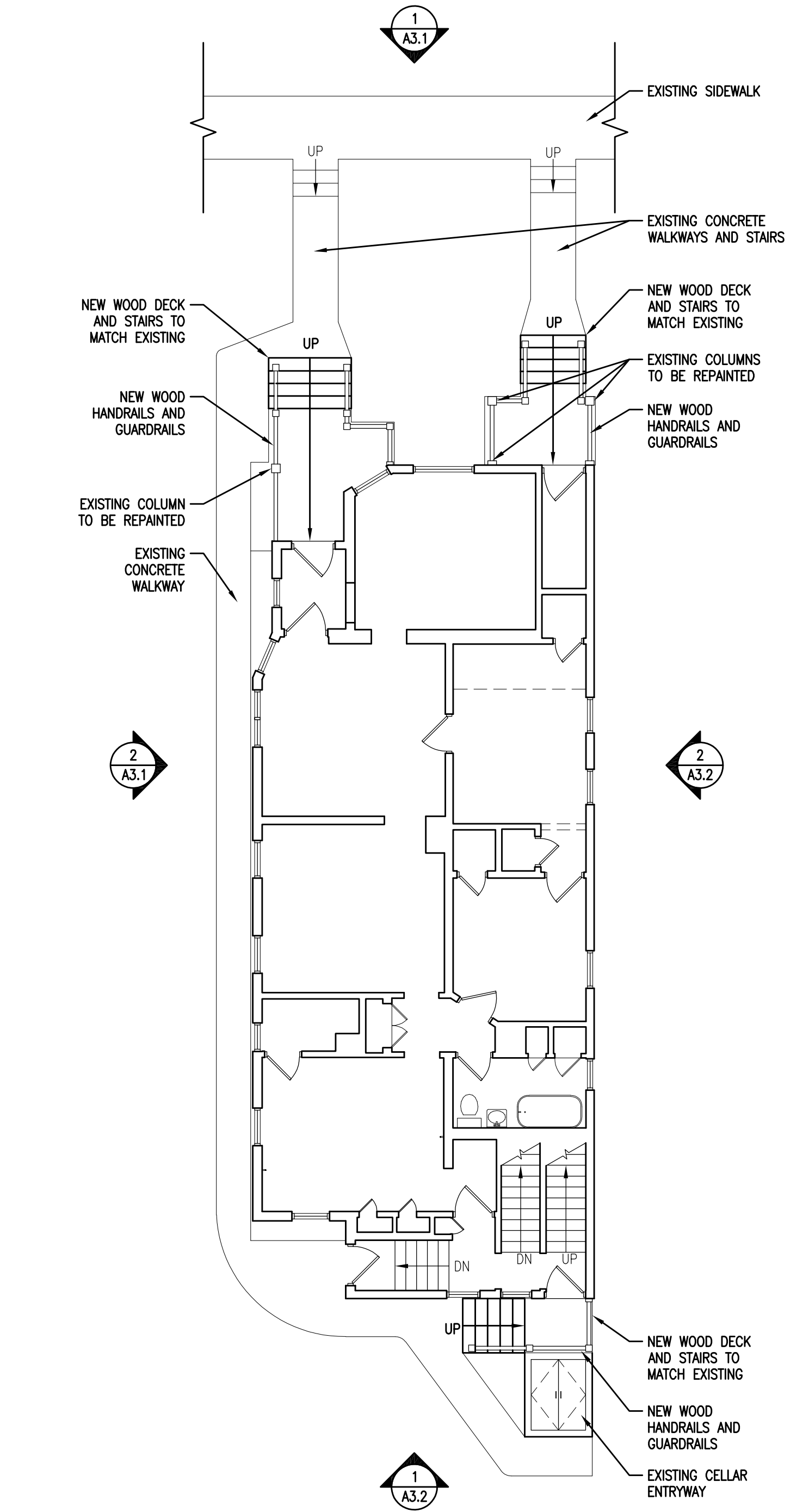
Date: 03/08/2022

Drawn By: ZJT

Project No.: 22008.00

Sheet No.

A1.1



1 FIRST FLOOR PLAN
 SCALE: 1/8" = 1'-0"



DRAFT
PRELIMINARY
 NOT FOR
 CONSTRUCTION
 QUORUM ARCHITECTS, INC.

**928 N. 29TH STREET
 RENOVATION**

928 N. 29th Street
 Milwaukee, Wisconsin 53208

Revisions:

Sheet Name:
 WEST & SOUTH
 ELEVATIONS

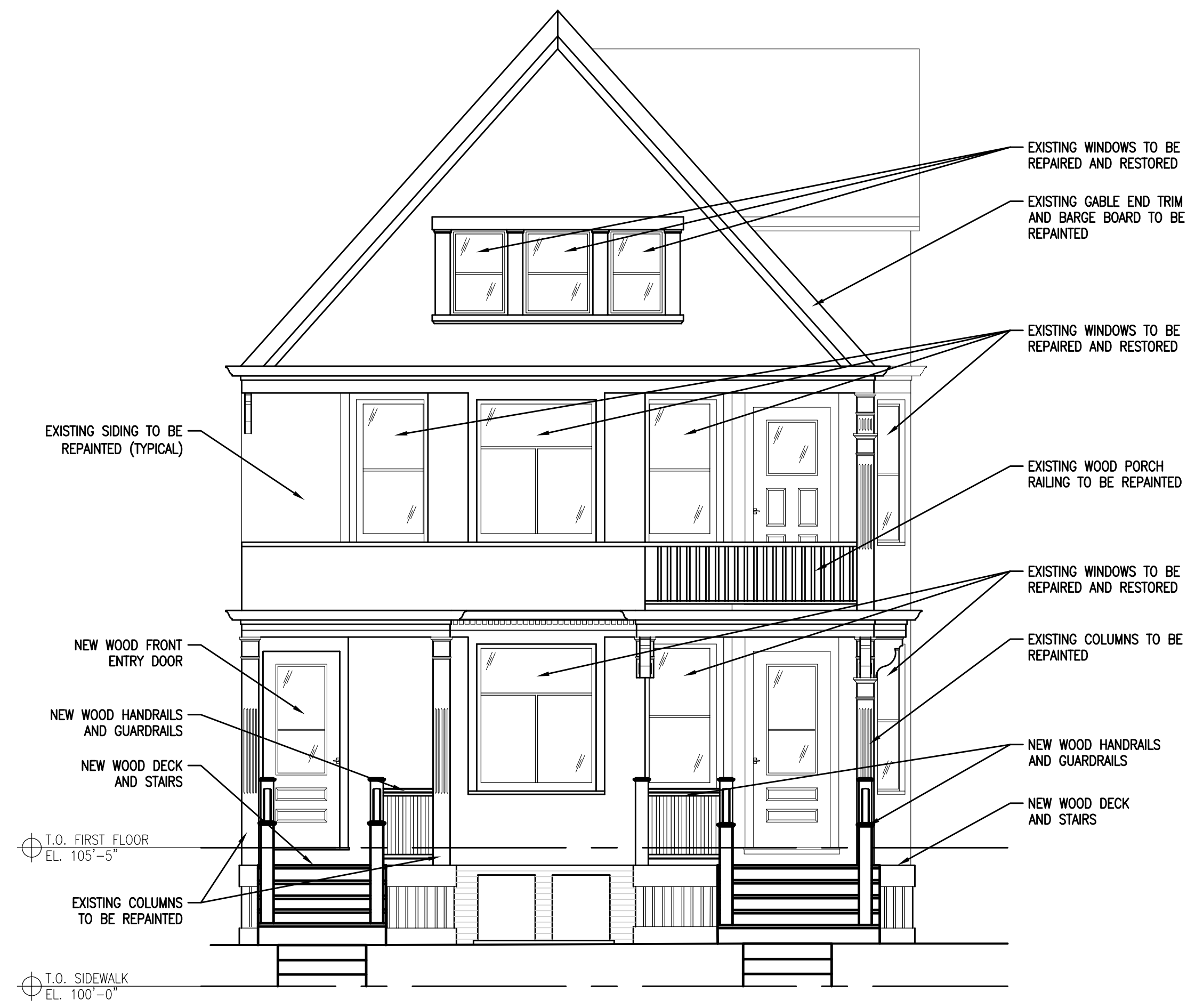
Date: 03/08/2022

Drawn By: ZJT

Project No.: 22008.00

Sheet No.

A3.1



1 WEST ELEVATION
 SCALE: 1/4" = 1'-0"



2 SOUTH ELEVATION
 SCALE: 1/4" = 1'-0"



Quorum Architects, Inc.
 3112 West Highland Boulevard
 Milwaukee, Wisconsin 53208
 Phone: 414.265.9265
 Fax: 414.265.9465
 www.quorumarchitects.com

DRAFT
PRELIMINARY
 NOT FOR
 CONSTRUCTION
 QUORUM ARCHITECTS, INC.

**928 N. 29TH STREET
 RENOVATION**

928 N. 29th Street
 Milwaukee, Wisconsin 53208

Revisions:

Sheet Name:
 EAST & NORTH
 ELEVATIONS

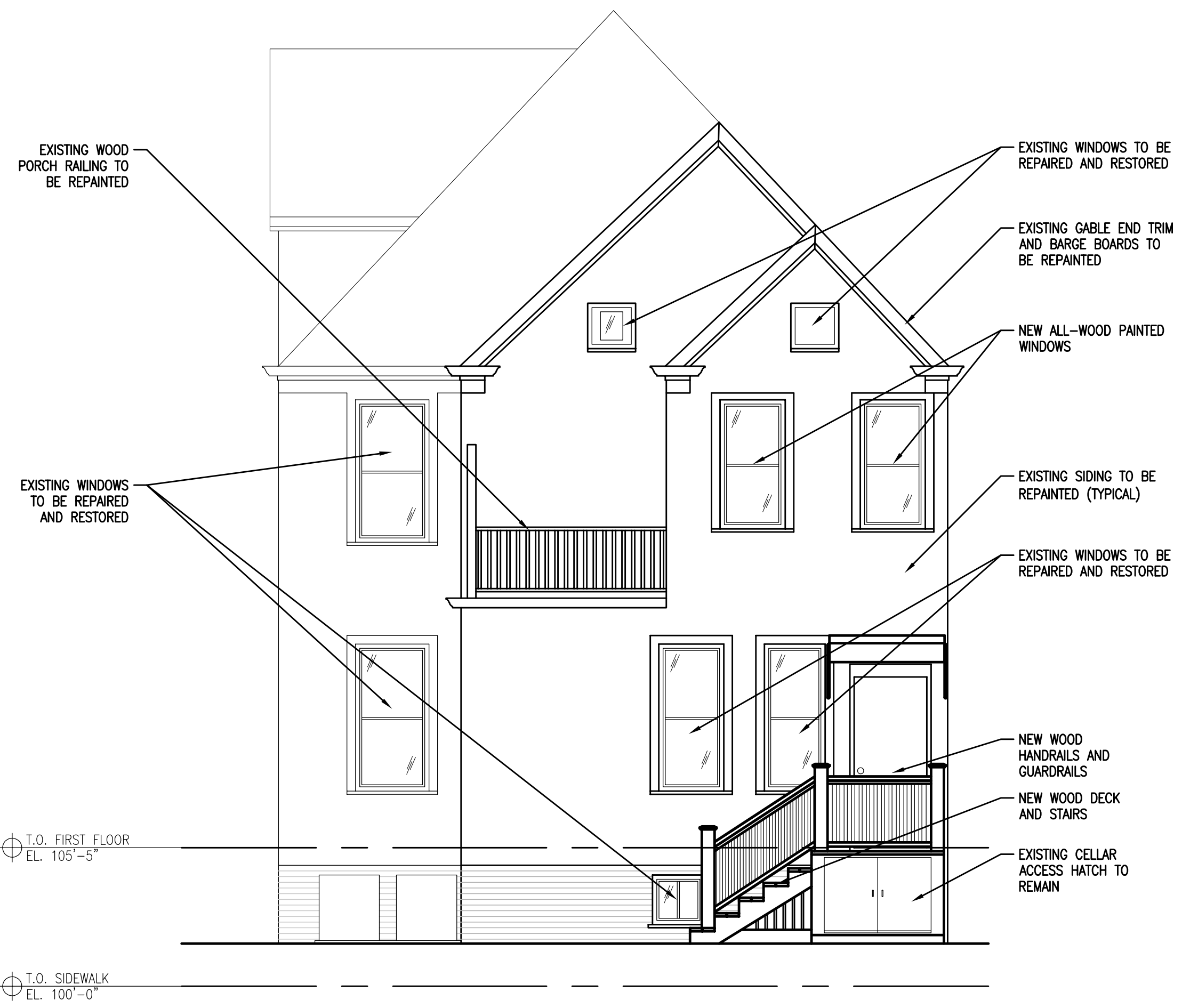
Date: 03/08/2022

Drawn By: ZJT

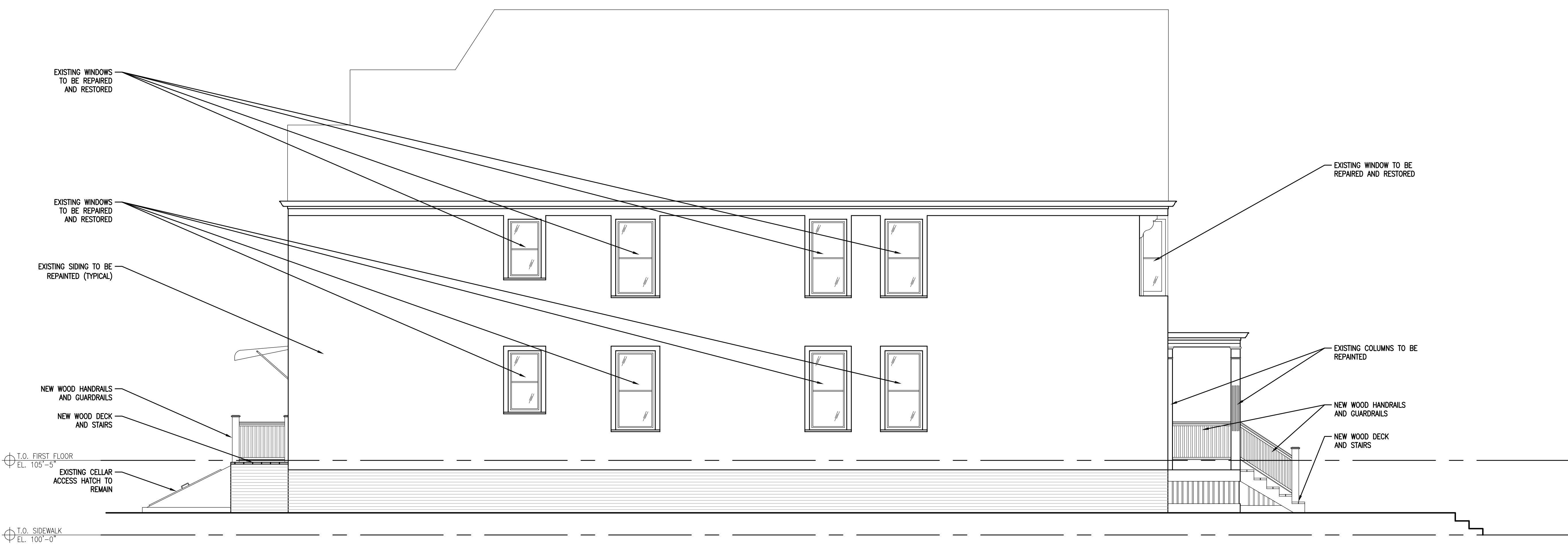
Project No.: 22008.00

Sheet No.

A3.2



1 EAST ELEVATION
 SCALE: 1/4" = 1'-0"



2 NORTH ELEVATION
 SCALE: 1/4" = 1'-0"

Mar 08, 2022 - 5:33pm
 Q:\22 Projects\22008-00 928 N 29th Street\CD\22008-00-A1-1.dwg