

N.E. 7-6-22  
ATLAS P. 496

496  
W. LINCOLN AVE.  
1575 1571 1569 1565 1561 1555 1553  
1567 1563 1559

496-18  
SCALE 80 FT. = 1 INCH

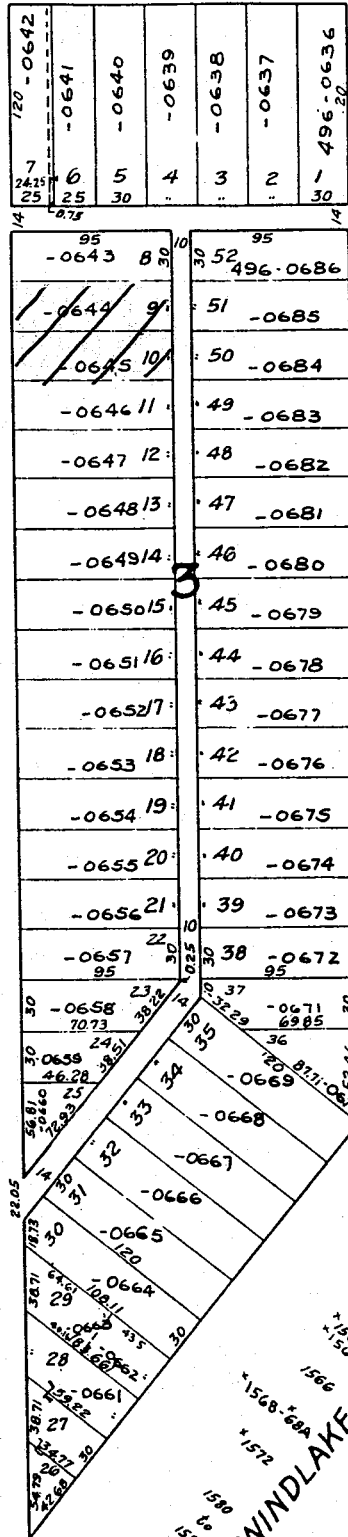


ST.

PL.

- 2320
- \* 2324-24A
- \* 2328-28A
- 2332
- \* 2336-36A
- 2338
- 2344
- 2348
- 2352
- 2354
- 2358  
2360
- \* 2364-64A
- \* 2368-68A
- 2370
- 2376
- \* 2380-80A
- 2402
- 2406

- \* 2319  
\* 2319A
- \* 2325  
\* 2325A
- \* 2329  
\* 2329A
- \* 2333  
\* 2333A
- \* 2337  
\* 2337A
- \* 2341  
\* 2341A
- \* 2345  
\* 2345A
- 2349
- \* 2353  
\* 2353A
- 2355
- 2359  
2361
- \* 2363  
\* 2363A
- 2367
- 2371
- 2375
- \* 2379  
\* 2379A
- \* 2383  
\* 2383A



S. 10TH  
\* 2418  
\* 2418A

W. WINDLAKE AVE.  
\* 1552A  
1554  
\* 1558  
\* 1558A  
\* 1562  
\* 1562A  
1566  
\* 1568-88A  
\* 1572  
1580  
1586

HOPKINS & HADLEY'S SUBD. NO. 1  
S. 15TH

S.E. 6-6-22  
ATLAS P. 469

469  
H. SURGE'S SUBD.

469-14

W. GRANT  
1569

ST.  
1557  
1551



ST.  
2200  
2200-A & B  
2208 4A

KUNCKELL'S SUBD.

S. 16TH

	12.46	13	30	12	70
	.34	14	29	12	469-0803
	469-2701	14	29	12	
	21	15	28	12	
	-2702	15	28	12	
	112.08	17	28	12	-0804
	469-1801	17	28	12	
	111.94	18	28	12	
	-1802	18	28	12	
	.79	19	28	12	
	-1803	19	28	12	-0805
	.65	20	28	12	-0806
	-1804	20	28	12	
	.50	21	28	12	-0807
	-1805	21	28	12	-0808
	.36	22	28	12	21
	-1806	22	28	12	
	.21	23	28	12	6-0809
	-1807	23	28	12	
	111.07	24	28	12	
	-1808	24	28	12	-0810
	110.92	25	28	12	-0811
	-1809	25	28	12	
	.78	26	28	12	-0812
	-1810	26	28	12	-0813
	.63	27	28	12	-0814
	-1811	27	28	12	-0815
	110.35	28	28	12	-0816
	30	30	31	12	-0817
	29	30	31	12	469-110818
	469-1813-110			12	70
	4971			12	

PL.

\*2213-13A  
\*2219-B & C

\*2219  
\*2221

\*2223  
\*2223A

\*2227  
\*2229

\*2233

\*2237  
\*2237A

\*2241

\*2247  
\*2247A

\*2249

\*2251

\*2255

\*2259

\*2263-63A

\*2267

BURNHAM, ROGERS & BECHER'S SUBD. NO. 3

S. 15TH

MICROFILMED 7-1-77

1570  
W. LINCOLN

1550  
1556  
AVE.

S.W. 6-6-22  
ATLAS P. 470

470

470-18

MUSKEGO AVE. HEIGHTS

LANDS

W. BURNHAM

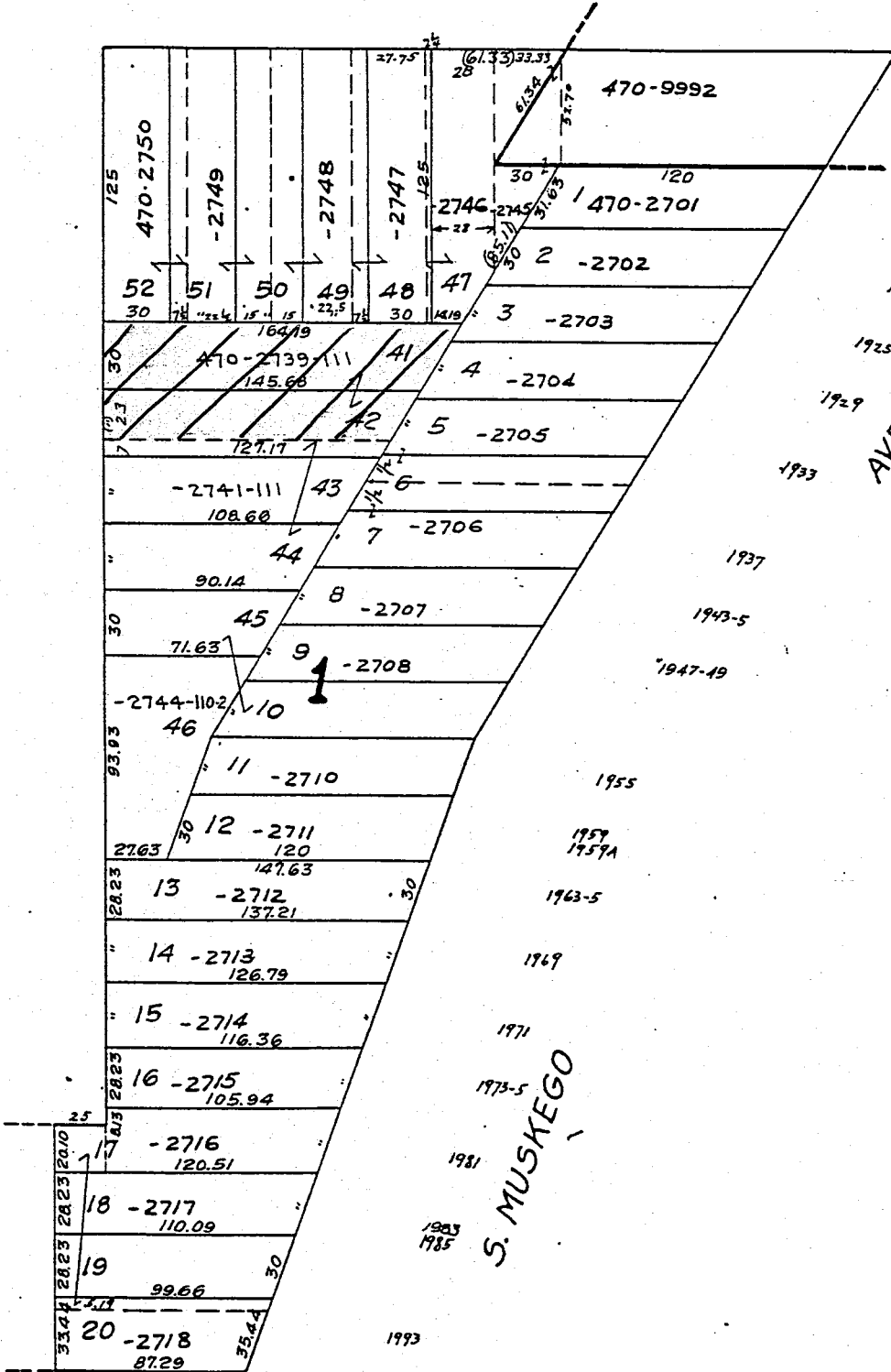
ST.



2219 2215 2211 2205 2181 2179

PLACE

S. 22ND



1920

1928  
1930

1938-46

1911  
1914  
1917  
1921  
1925  
1929  
1933  
1937  
1943-5  
1947-49

S. MUSKEGO

SEE PAGE 470-19

W. ROGERS ST.



Cont'd from preceding Page

	18	19	20	1.55
*3252A *3252	285-1041 F. 8400 47			
*3246	-1040 45 F. 8399	21	285-1017 F. 8376	3251 3249
*3240	-1039 44 F. 8398	22	-1018 F. 8377	3247 3245
*3236	-1038 43 F. 8397	23	-1019 F. 8378	3243 3241
ST 3234 3232	-1037 42 F. 8396	24	-1020 F. 8379	3239 3227
3230 3228	F. 8395 -1036 41	25	-1021 F. 8380	*3235
3226 3224	F. 8394 40 -1035	26	-1022 F. 8381	*3229
3220 3218	F. 8393 39 -1034	27	-1023 F. 8382	*3225-25A
3216 3214	-1033 F. 8392 37	28	-1024 F. 8383	*3223
3210 3208	-1032 36 F. 8391	29	-1025 F. 8384	*3217
3204 3202	-1031 35 F. 8390	30	-1026 F. 8385	*3215
	285-1030 F. 8389	31	-1027 F. 8386	*3209
		32	-1028 F. 8387	*3205
		33	F. 8388 285-1029	*3201

N 24 TH

N. 23 RD

MICROFILMED

2320  
2322  
W. AUER AVE.

W. Concordia

Ave.



3292	F9568 285-0318 20	30	1	F9561 285-0301	3291
3288	F9567 -0317 19		5	F9551	
3284 3282	F9566 -0316 18		2	-0302	
3280	F9565 -0315 17		7	F9552	3287-87A
3276 3274	F9564 -0314 16		3		ST.
3272	F9563 -0313 15		4	F9553 -0303	3281
3268	F9562 -0312 14		5	F9554 -0304	3277
3264	F9561 -0311 13		6	F9555 -0305	3273
3260	F9560 -0310 12		7		
3256	F9559 285-0309 11		8	F9556 -0306	3267
3252 3250	F9934 285-0725 29	30	9	F9557 -0307	3261
3248 3246	F9933 -0724 27		10	F9558 285-0308	3257
3242 3240	F9932 -0723 26		1	F9910 285-0701	3253
3236	F9931 -0722 25		2		
3232	F9930 -0721 24		3	F9911 -0702	3247 3245
3228	F9929 -0720 23		4	F9912 -0703	GRAND VIEW Vol. 15 Page 47
3224	F9928 -0719 22		5	F9913 -0704	3239
3220	F9927 -0718 21		6	F9914 -0705	3235 3233
3218	F9926 285-0717 20		7	F9915 -0706	3229
			8	F9916 -0707	3225
			9		N 24 <sup>TH</sup>
			10	F9917 285-0708	3219

N. 24<sup>TH</sup> PL.

N 24<sup>TH</sup>

3212	F9925 285-0716	18	17	16	15	14	13	12	11
	F9924 -0714		F9923 -0713	F9922 -0712	F9921 -0711	F9920 -0710	F9919 -0709		

MICROFILMED

W. AUER AVE.

GRAND VIEW

W. AUER

AVE

2483 2479 2473 2469 2465 2457  
2481 2477 2471 2467 2463 2453

ST.

PL.

3166

3160

3148

3144

3140

3136

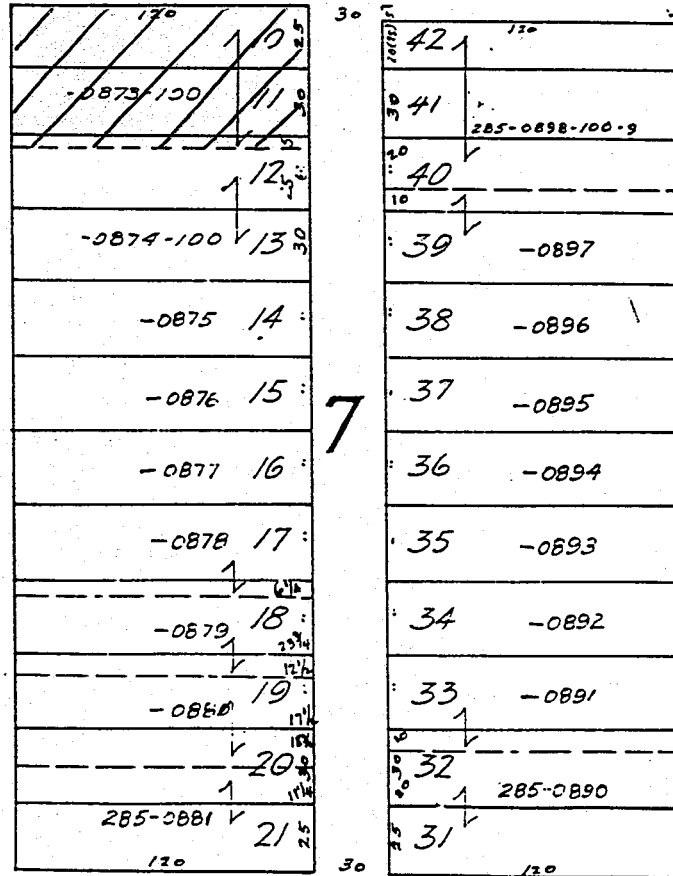
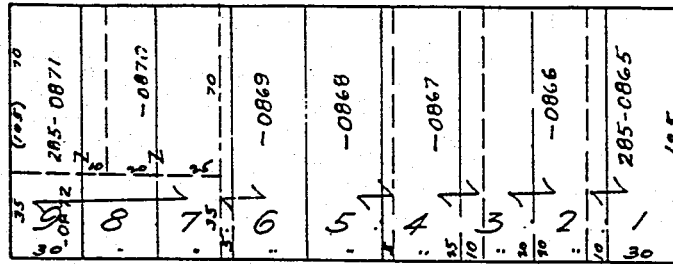
3132

3128  
3126

3124  
3122

3118  
3116

N 25<sup>TH</sup>



3157  
3155

3151

3145

3141

3137

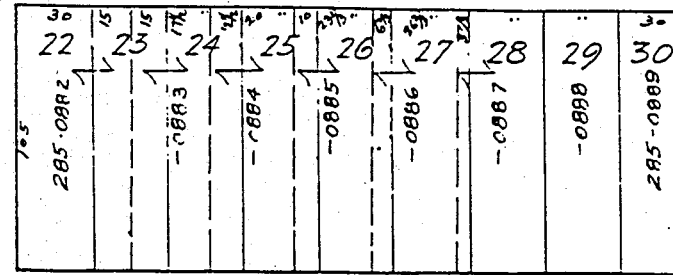
3133

3129

3125

3119  
3119

N 24<sup>TH</sup>



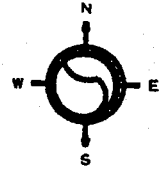
BURLEIGH

2486 2476 2472 2468 2464 2458 2456 2450  
2484 2474 2470 2466 2462 2456 2454 2448

SW 07-7-22  
ATLAS P. 285

285

285-34  
SCALE 1" = 80'

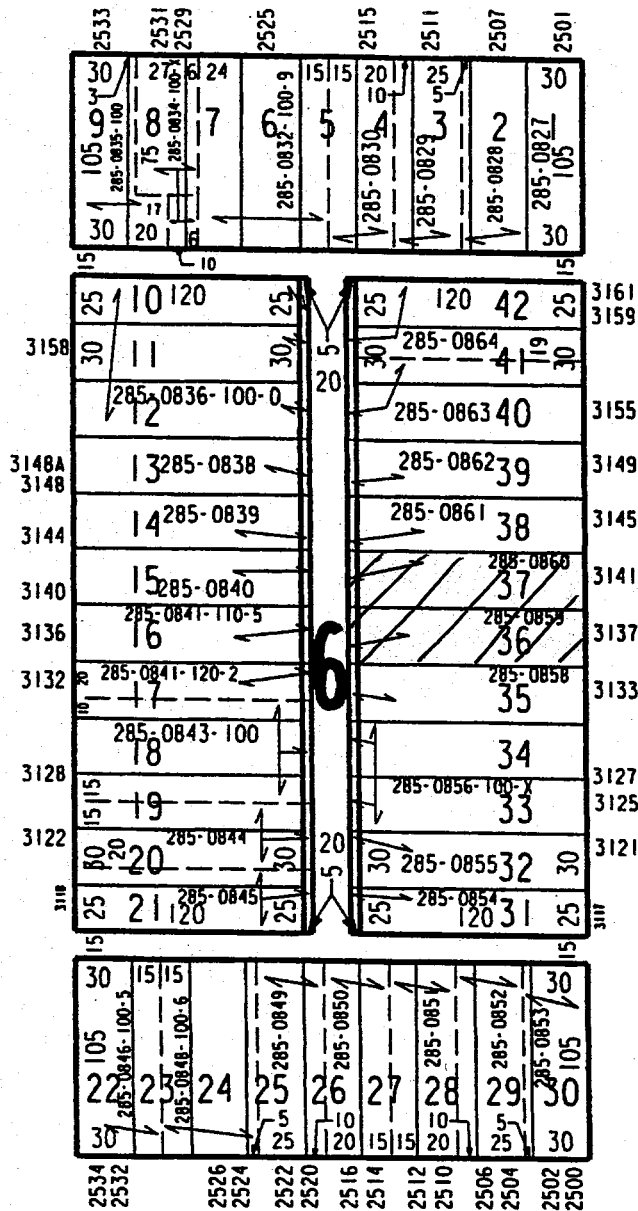


GRAND VIEW

W AUER AV

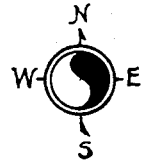
N 26TH ST

N 25TH ST



W BURLEIGH ST

CLARK'S ADDITION



W. PIERCE

ST.

\*2137 \*2131 \*2125 \*2119 \*2117A \*2117 \*2113 \*2111

ST. 706

\*714 \*716

\*722

\*726

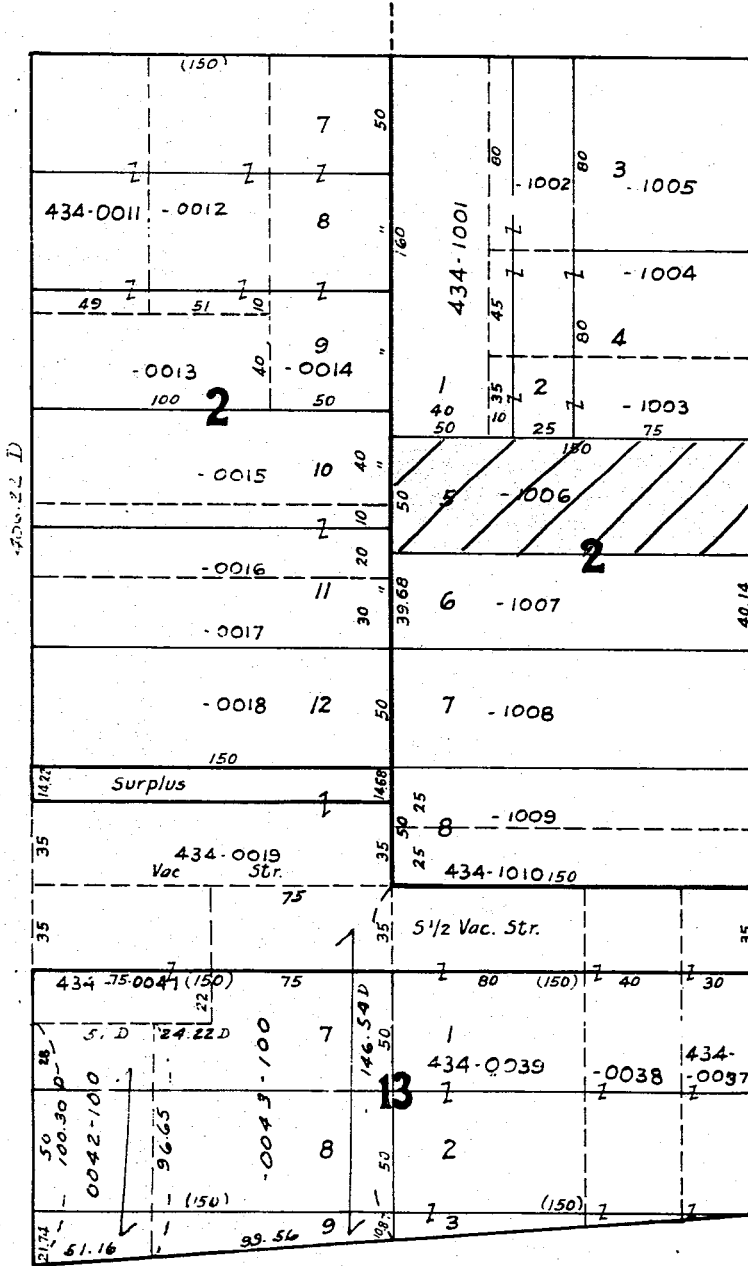
\*730 \*732

\*736 \*36A

\*742

\*750

S. 22ND



\*701 ST.

\*713

\*719-79A

\*725

\*729

\*735

\*741

\*743

\*745

\*747

RESUBD. OF LOTS 1 TO 6 BLK. 2 CLARK'S ADD.

\*759 S. 21ST

\*2134 \*2138 2137 W. NATIONAL

\*2118

\*2110

\*2104 \*2106

\*2100 AVE.

CLARK'S ADDITION



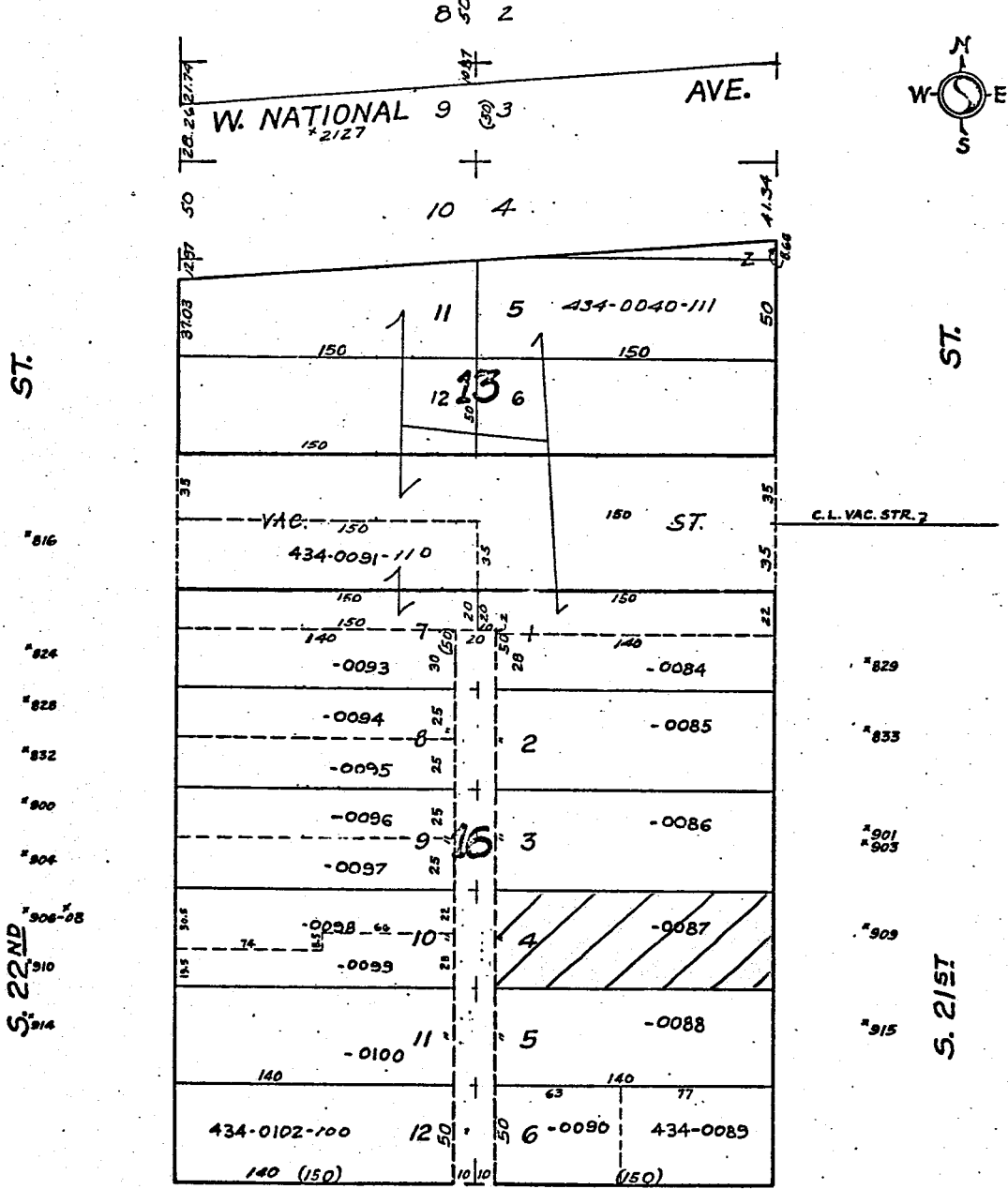
S.W. 31-7-22  
Atlas p. 434

434

434-07

MANUFACTURING PLAT - STATE

CLARK'S ADDITION



MICROFILMED  
3-25-81

W. MINERAL

ST.

SW 05-6-22

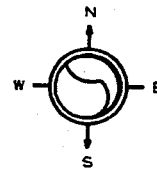
ATLAS P. 468

468

468-19

SCALE 1" = 80'

C.S. MAP  
NO. 2069

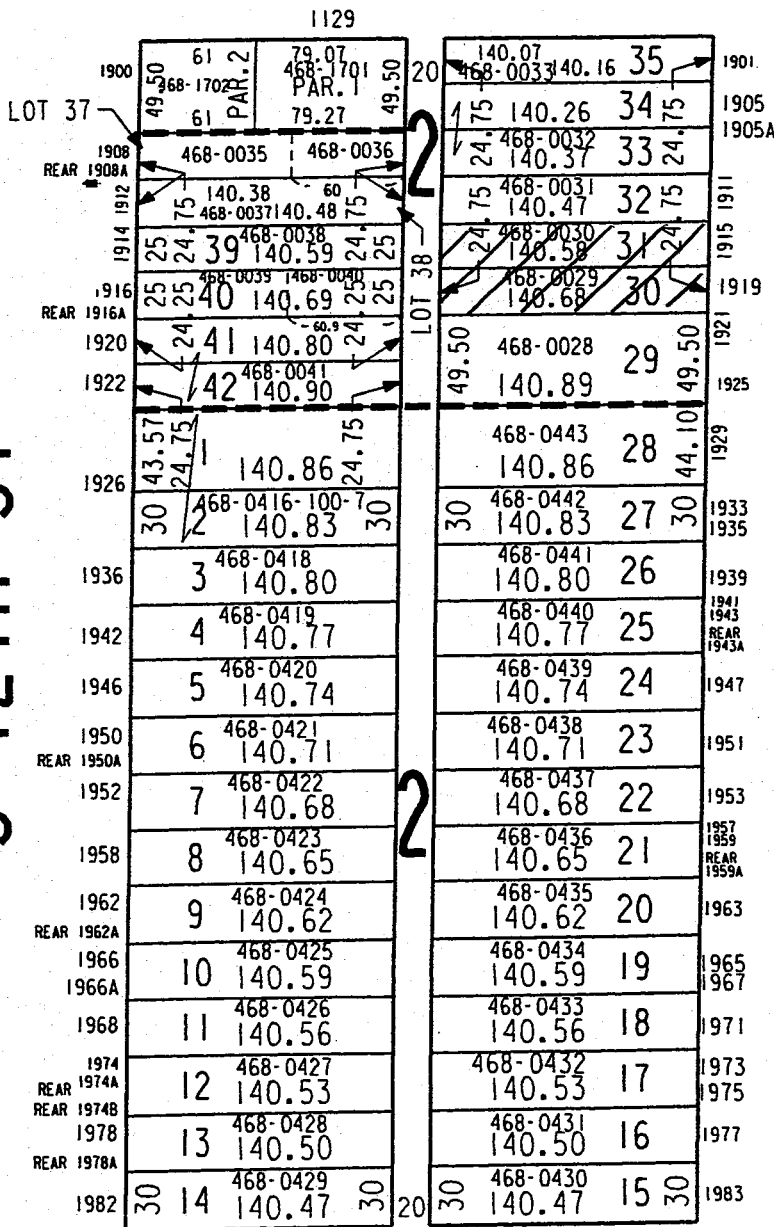


# W BURNHAM ST

S 12TH ST

S 11TH ST

# W ROGERS ST



ASSESSMENT  
SUBD. NO. 43

C. HARMeyer'S SUBD.

12-01-99

ASSESSOR'S OFFICE  
CITY OF MILWAUKEE

S.E. 6-6-22

ATLAS P. 469

469 BURNHAM, ROGERS, & BECHER'S SUBD. No 3

469-11

W. ROGERS

\*1521-23

ST.



*2002-02A	127.50	469.0724	40 <sup>0</sup> / <sub>10</sub>	15	127.50	469.0686	2001 2007
2004 2006		-0723	39		1		15
2008 2010		-0722	38		2		2009 2011
*2014-14A		-0721	37		3	-0687	2013 2015
*2016-16A		-0720	36		4	-0688	*2017-17A
2020 2022		-0719	35		5	-0689	*2021-21A & B *2023-23A
2024 2026		-0718	34		6	-0690	*2025 *2025A
*2028 *2028A		-0717	33		7	-0691	2029
2034		-0716	32		8	-0692	*2033-33A
*2036-36A		-0715	31		9	-0693	*2037-37A
2042		-0714	30		10	-0694	2041
2046		-0713	29		11	-0695	2045 2047
2048		-0712	28		12	-0696	2049 2051
*2052-54 *2052-A-REAR		-0711	27		13	-0697	2053 2055
2056 2058		-0710	26		14	-0698	*2057-59 *2057A-REAR
*2060 *2060A-REAR		-0709	25		15	-0699	2061
2066		-0708	24		16	-0700	2061 S. 15TH
	63.75	-0707	23		17	-0701	*2069 *2069A
			22		18	-0702	2073 2075
			21		19	-0703	2079
	127.50		20	15	20	-0704	
						127.50	

VICORFILM S-17-71

\*1532 1528 1524 1520 1522 W. BECHER

\*1504 ST.

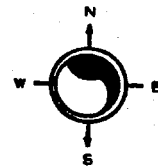
TO 169  
BY 469  
DATE 12-1

SW 13-7-21  
ATLAS P. 327

327

327-06  
SCALE 1"=80'

CONTINUATION OF  
WESTERN AVENUE PARK  
W WRIGHT ST

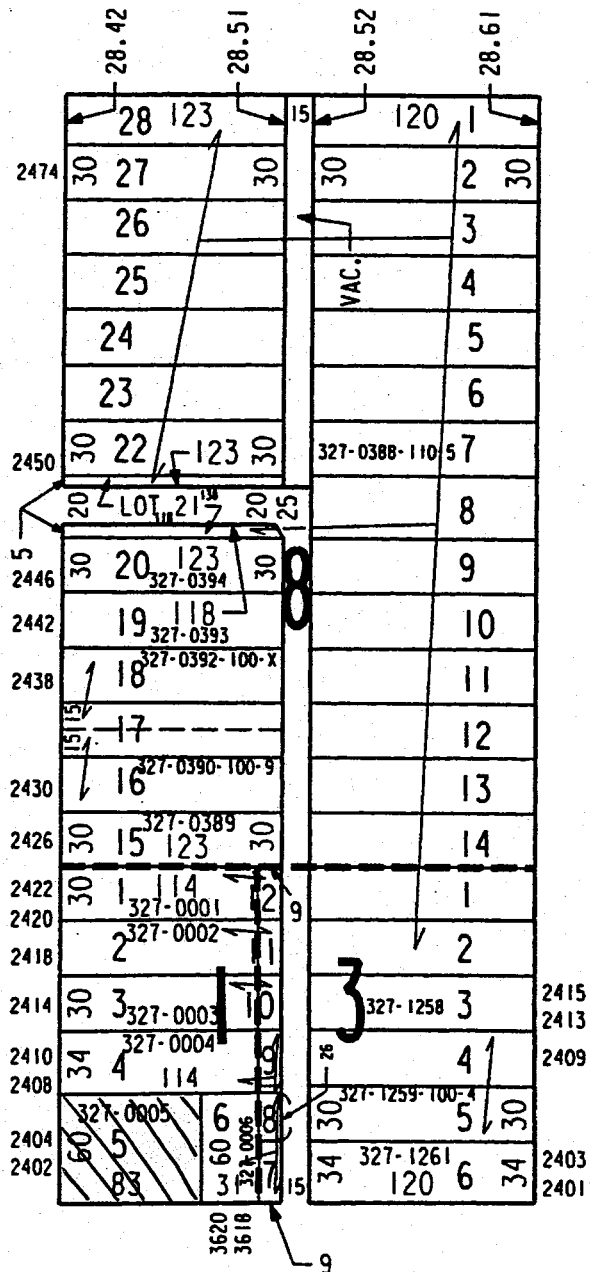


ASSESSOR'S  
PLAT NO. 122

N 37TH ST

N 36TH ST

STEGER'S  
SUBDIVISION



W MEINECKE AV

S.W. 13-7-21  
ATLAS P. 317

327  
Vol. 18 Page 32  
Sherman Park

327-11

W. Wright

St.



2478 2476	327-0936 40 G-14726	327-0901 G-14771	2479 2477
S 2474 2472	-0935 39 30 G-14726	2 -0902 G-14772	2473
	-0934 38 G-14724	3 -0903 G-14773	2469
2470 2468	-0933 37 G-14725	4 -0904 G-14774	2465
2464 2462	-0932 36 G-14722	5 -0905 G-14775	2461
2460 2458	-0931 35 G-14721	6 -0906 G-14776	2457
2454 2452	-0930 34 G-14720	7 -0907 G-14777	2453
2450	-0929 33 G-14719	8 -0908 G-14778	2449
2446 2444	-0928 32 G-14718	9 -0909 G-14779	2445
2440 2438	-0927 31 G-14717	10 -0910 G-14780	2441
2436 2434	-0926 30 G-14716	11 -0911 G-14781	2439 2437
2430	-0925 29 G-14715	12 -0912 G-14782	2435 2433
2426 2424	-0924 28 G-14714	13 -0913 G-14783	2429
2422 2420	-0923 27 G-14713	14 -0914 G-14784	2425 2423
2416 2414	-0922 26 G-14712	15 -0915 G-14785	2421 2419
N 38 1/2 2412 2410	-0921 25 G-14711	16 -0916 G-14786	2415 2413
	-0920 24 G-14710	17 -0917 G-14787	
2406	-0919 23 G-14709	18 -0918 G-14788	2411 2409
2402	-0918 22 G-14708	19 -0919 G-14789	2407 2405
	-0917 21 G-14707	20 -0919 G-14790	2401

St.

N 37 1/2

W. Meinecke

Ave.

UNRECORDED

1st Con'n Boulevard Park

W. Wright

St.



2478 2476	118 327-0612 30 G-15284	116 1 327-0582 G-15174	2477
St. 2472 2470	-0611 29 G-15283	2 -0583 G-15175	2475 2473 St.
2468 2466	-0610 28 G-15282	3 -0594 G-15176	2471 2469
2462 2460	-0609 27 G-15281	4 -0585 G-15177	2465 2463
2456 2454	-0608 26 G-15280	5 -0586 G-15178	2461 2459
2452 2450	-0607 25 G-15179	6 -0587 G-15177	2457 2455
2446 2444	-0606 24 G-15178	7 -0588 G-15180	2451 2449
2440 2438	-0605 23 G-15177	8 -0589 G-15181	2447 2445
2436 2434	-0604 22 G-15176	9 -0590 G-15182	2441 2439
2430 2428	-0603 21 G-15175	10 -0591 G-15183	2435 2433
2424 2422	-0602 20 G-15174	11 -0592 G-15184	2431 2429
2420 2418	-0601 19 G-15173	12 -0593 G-15185	2425
2414 2412	-0600 18 G-15172	13 -0594 G-15186	2419
2408 2406	-0599 17 G-15171 G-15170	14 -0595 G-15187	2415 2413
2404 2402	-0598 16 G-15169	15 -0596 G-15188 G-15189	2409 2407 N. 39th
	118	116	2405 2403

W. Meinecke

Ave.

MICROFILMED

S.W. 13-7-21  
ATLAS P. 327

327

327-22

Vol. 32 Page 8  
1st Cont'n Boulevard Park

W Wright St.



2476 2474	118	30	327-0581	118	1	327-0552	2477 2475
			G.-15173			G.-15174	
2472 2470		29	-0580		2	-0553	2473 2471
			G.-15172			G.-15175	
2466		28	-0579		3	-0554	2469 2467
			G.-15171			G.-15176	
2462 2460		27	-0578		4	-0555	2463 2461
			G.-15170			G.-15177	
2456 2454		26	-0577		5	-0556	2457 2455
			G.-15169			G.-15178	
2452 2450		25	-0576		6	-0557	2451
			G.-15168			G.-15179	
2444		24	-0575		7	-0558	2447 2445
			G.-15167			G.-15180	
2440		23	-0574	7	8	-0559	2441 2439
			G.-15166			G.-15181	
2436 2434		22	-0573		9	-0560	2437 2435
			G.-15165			G.-15182	
2430 2428		21	-0572		10	-0561	2431 2429
			G.-15164			G.-15183	
2424 2422		20	-0571		11	-0562	2425
			G.-15163			G.-15184	
2418 2416		19	-0570		12	-0563	2423 2421
			G.-15162			G.-15185	
2414 2412		18	-0569		13	-0564	2415 2413
			G.-15161			G.-15186	
2408 2406		17	-0568		14	-0565	2409 2407
			G.-15160			G.-15187	
2404 2402		16	-0567		15	-0566	2405 2403
			G.-15159			G.-15188	

W. Meinecke Ave.

GASTHOPE