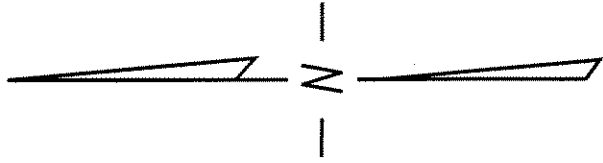


N.E. 1/4 SEC. 17, T.8N., R.2E.

79

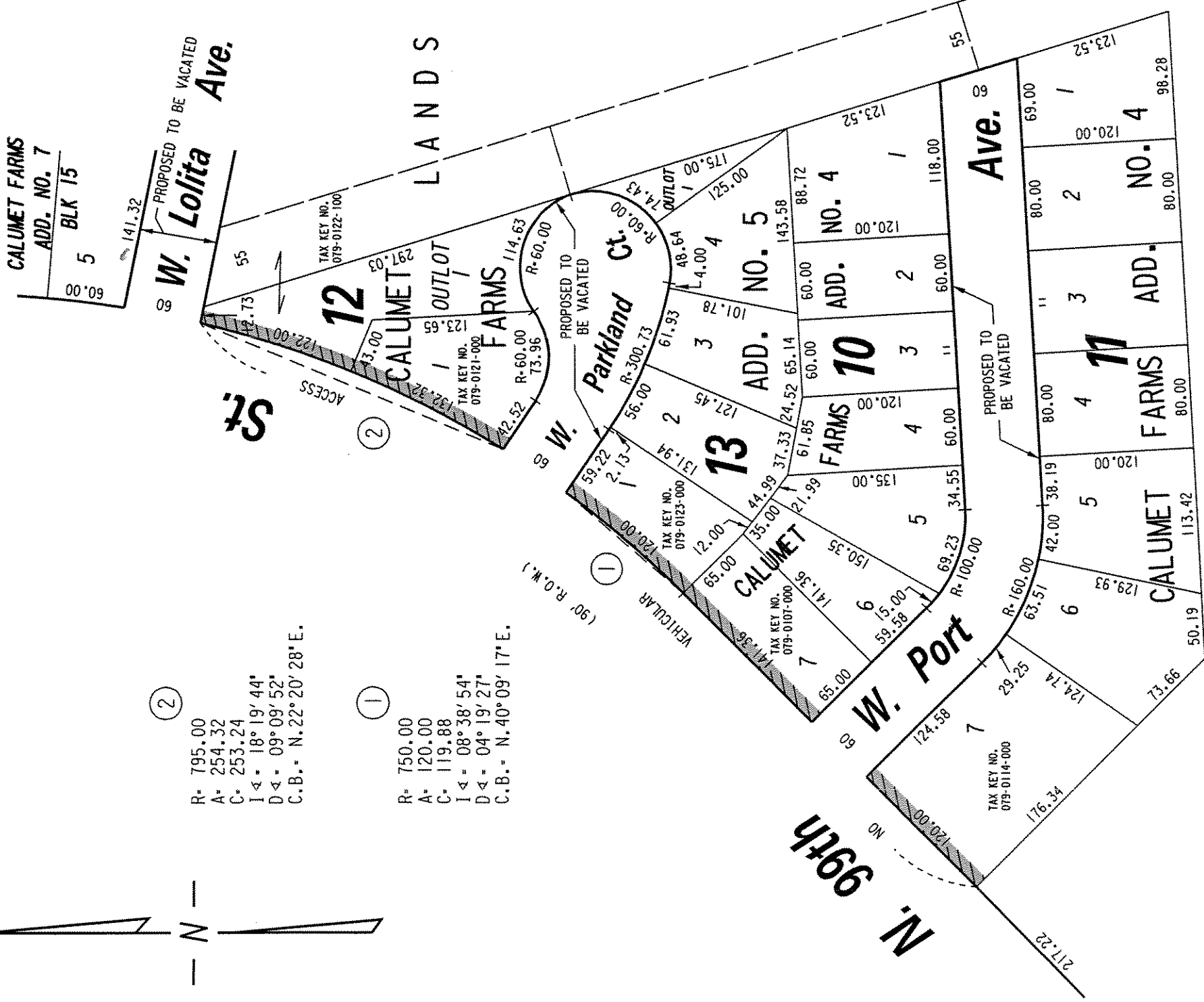


②

- R= 795.00
- A= 254.32
- C= 253.24
- I 4 = 18° 19' 44"
- D 4 = 09° 09' 52"
- C.B.= N.22° 20' 28" E.

①

- R= 750.00
- A= 120.00
- C= 119.88
- I 4 = 08° 38' 54"
- D 4 = 04° 19' 27"
- C.B.= N.40° 09' 17" E.



NO VEHICULAR ACCESS RESTRICTION TO BE REMOVED

FILE NO.

INFRASTRUCTURE SERVICES DIVISION

MILWAUKEE, WISCONSIN

ASSIGNED TO: P.A. VELLA

DRAWN BY: P.A.V.

PROJECT/GRANT NO.: WK52360057

APPROVED BY:

CH'K'D. BY: W.E. FUCHS

DATE: AUG. 1, 2005

SCALE: 1" = 100'

Marcia Lindholm
 CENTRAL DRAFTING & RECORDS MANAGER

Jeffrey Plank
 ATTORNEY ENGINEER