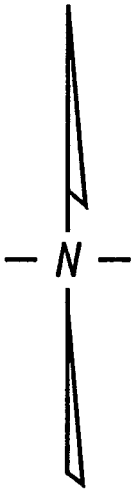


S.E. 1/4 SEC. 32, T.7N., R.22E.

431



W. Mineral

(76' R.O.W.)

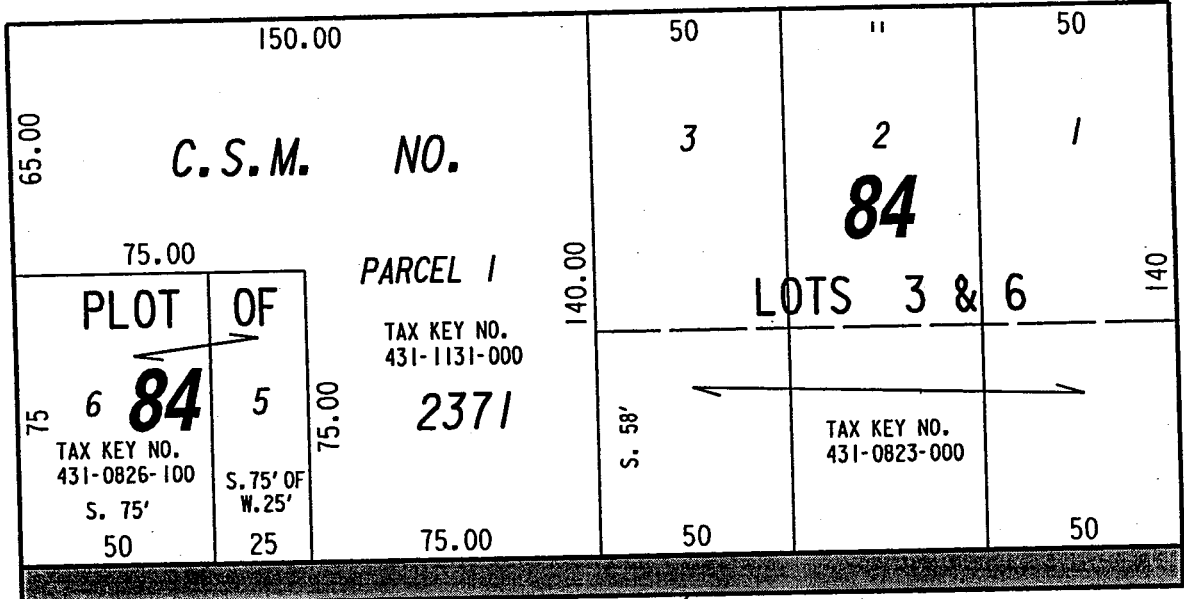
St.

St.

St.

(75' R.O.W.)

(75' R.O.W.)



20

N/L OF MILWAUKEE PROPER

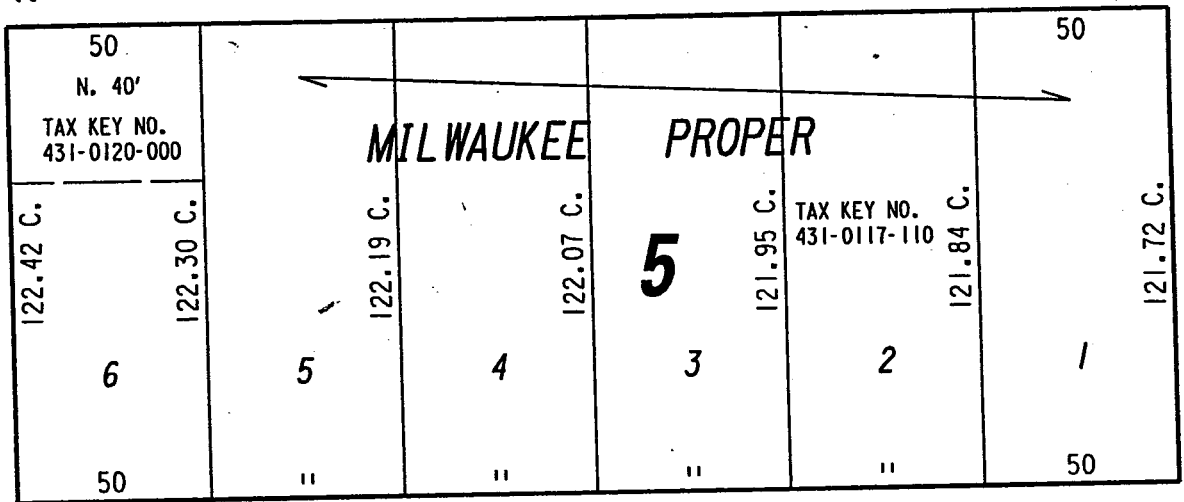
20

(76' R.O.W.)

(76' R.O.W.)

S. 3rd

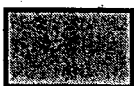
S. 2nd



W. Washington

(76' R.O.W.)

St.



PORTION OF PUBLIC ALLEY PROPOSED TO BE VACATED

EXHIBIT "A"

FILE NO. 021632

INFRASTRUCTURE SERVICES DIVISION

MILWAUKEE, WISCONSIN

ASSIGNED TO: W.E. FUCHS

CH'K'D. BY: M.C. WILLIAMS

DRAWN BY: W.E.F.

DATE: MAY 5, 2003

PROJECT/GRANT NO.: WK52337178

SCALE: 1" = 50'

APPROVED BY:

Marcia Lindholm
CENTRAL DRAFTING & RECORDS MANAGER

[Signature]
CITY ENGINEER