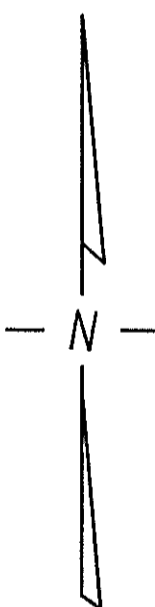
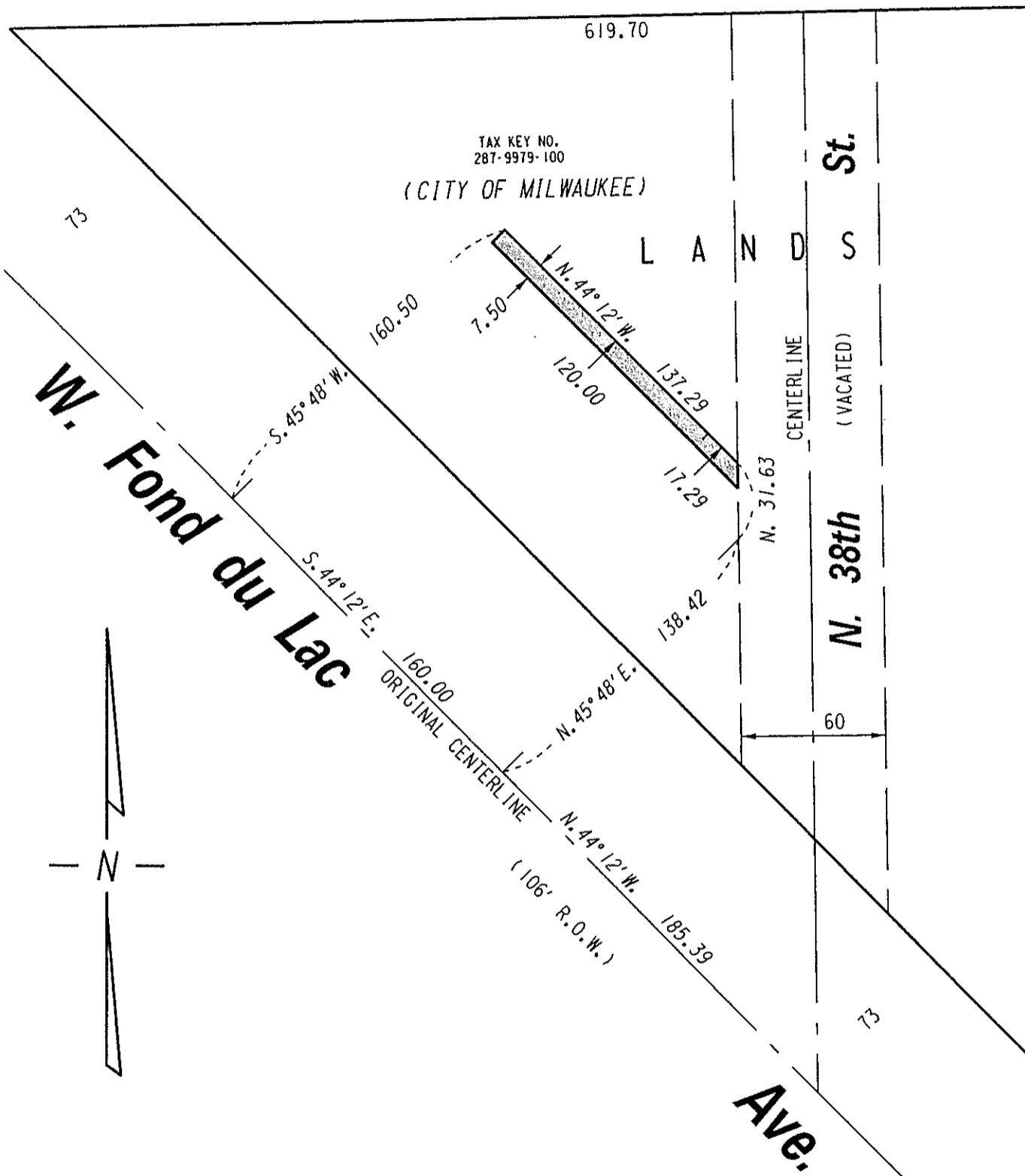
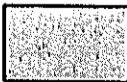


W. Concordia

(60' R.O.W.)

Ave.



 RESERVATION FOR PUBLIC ALLEY PURPOSES TO BE REJECTED

FILE NO.
INFRASTRUCTURE SERVICES DIVISION
MILWAUKEE, WISCONSIN

ASSIGNED TO: W.E. FUCHS
DRAWN BY: W.E.F.
PROJECT/GRANT NO.:
APPROVED BY:

CH'K'D. BY: W.E. FUCHS
DATE: MAY 20, 2011
SCALE: 1" = 60'

Marcia Cornell
CENTRAL DRAFTING & RECORDS MANAGER

Jeffrey Polenake
CITY ENGINEER