

S.E. 1/4 OF SEC. 13, T. 7 N., R. 21 E.

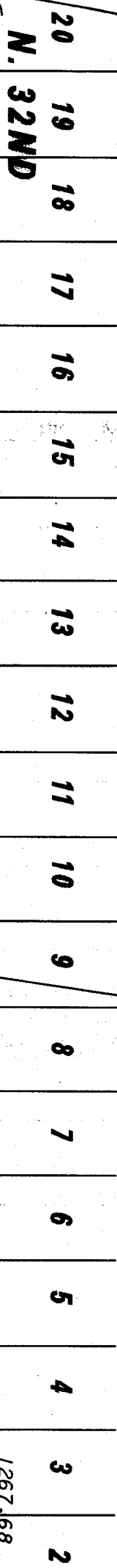
W. WRIGHT ST.

S.E. CORNER
OF LOT 20

CONTINUATION OF

BLOCK 6

W.E. 874
S.E. 2670
U.G. 17



W. CLARKE ST. (VAC.)

W.E. 875

CONTINUATION OF NORTH AVE. PARK



BLOCK 7

LEWIS SUBD.

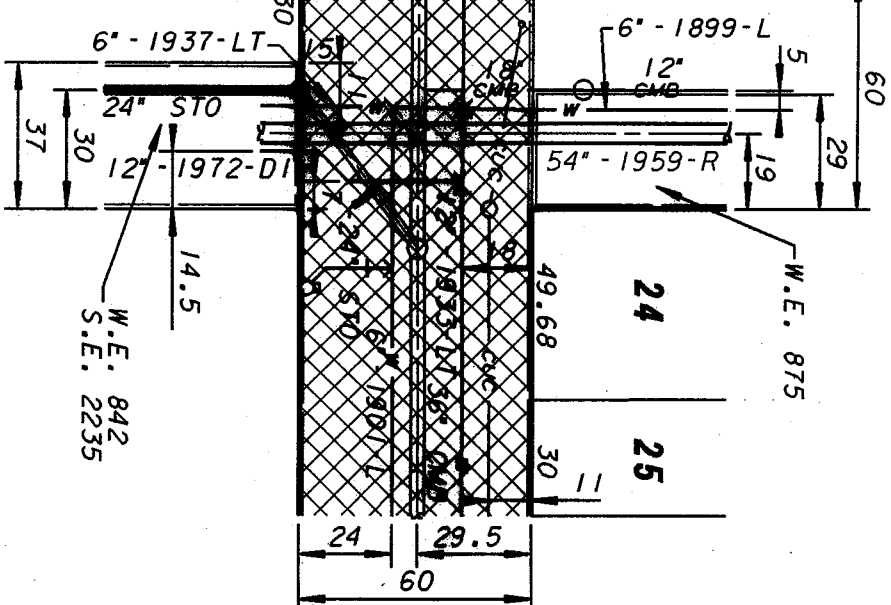


ST. (VAC.)

ST.

W. CENTER

W.E. 874
S.E. 2670
U.G. 17



WATER EASEMENT W.E. 874
SEWER EASEMENT S.E. 2670
UNDERGROUND CONDUIT
EASEMENT U.G. 17

Water Engineering
Department of Public Works
Milwaukee, Wisconsin

WATER EASEMENT
IN N. 32ND ST. (VAC.)
FROM W. WRIGHT ST.
TO W. CENTER ST.

SCALE 1" = 50'
DATE

IN REC. NO. 326
PLAN DATE 12-17-99
DRAWN BY P.W.P.
CHECKED BY P.W.P.
APPROVED BY [Signature] 6-6-00
DATE 6-6-00

DESIGN ENGINEER [Signature] 6-6-00
CHIEF DESIGN ENGINEER [Signature] 6/6/00
SPECIAL SURVEY COMMISSIONER OF PUBLIC WORKS

SHEET NO. 1 OF 1 PLAN FILE NO. **WE874**