



LIVING WITH HISTORY

Certificate of Appropriateness

Milwaukee Historic Preservation Commission/200 E. Wells Street/Milwaukee, WI 53202/phone 414-286-5712/fax 414-286-3004

Property 1338 W. FOREST HOME AV. Mitchell Street Historic District
Description of work Replace existing signage with new corporate logo.
Date issued 11/24/2015 PTS ID 107337 COA

In accordance with the provisions of Section 320-21 (11) and (12) of the Milwaukee Code of Ordinances, the Milwaukee Historic Preservation Commission has issued a certificate of appropriateness for the work listed above. The work was found to be consistent with preservation guidelines. The following conditions apply to this certificate of appropriateness:

Work to be completed as described in COA application.

All work must be done in a craftsman-like manner, and must be completed within one year of the date this certificate was issued. Staff must approve any changes or additions to this certificate before work begins. Work that is not completed in accordance with this certificate may be subject to correction orders or citations. If you require technical assistance, please contact Dean Doerrfeld of the Historic Preservation staff as follows: Phone: (414) 286-5712 E-mail: Dean.Doerrfeld@milwaukee.gov.

If permits are required, you are responsible for obtaining them from the Milwaukee Development Center. If you have questions about permit requirements, please consult the Development Center's web site, www.milwaukee.gov/build, or call (414) 286-8210.



City of Milwaukee Historic Preservation Staff

Copies to: Development Center, Ald. Jose Perez, Contractor, Inspector Robert McInnes (286-2518)



Existing signage—two locations



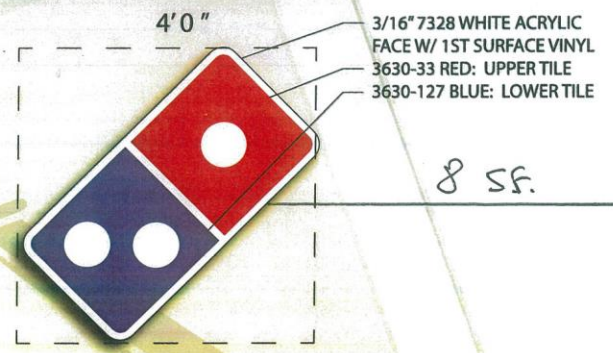
2500 South 170th Street
New Berlin, Wisconsin 53151
Proudly Made In the USA!

wire bauersignusa.com
voice 262.784.0500
fax 262.784.6675

Award Winning
Graphic Design



SAVED AS Domino's Pizza
LOCATION Milwaukee WI
CLIENT Forest Home Ave
SALES REP Bob Hacker
DATE 19 Oct 15
REVISION



8 SF.

WEST ELEVATION

SPECIFICATIONS

FABRICATE AND INSTALL (1SET) INTERNALLY ILLUMINATED, CUSTOM MOUNTED CHANNEL LETTER.

- FACE TO BE WHITE PLEXIGLASS
- LOGO MODULE FACE TO BE WHITE & DECORATED WITH TRANSLUCENT VINYL OVERLAYS
- RETURNS TO BE .050X5" AND BACKS TO BE .063 ALUMINUM
- TRIMCAPS TO BE 1" WHITE
- EXTERIORS PAINTED WHITE
- INTERIORS PAINTED WHITE
- ILLUMINATED WITH WHITED LEDs
- POWERED WITH APPROPRIATE LOAD POWER SUPPLIES
- MOUNTED TO SOFFIT WITH CUSTOM BUILT ALUMINUM TUBING & PLATE



Domino's Pizza channels
MILWAUKEE WI 1338 Forest Home Ave

DESIGNER Ryan Becht

FABRICATION

- CHANNEL LETTERS
- OPEN CHANNEL LETTERS
- REVERSE CHANNEL LETTERS
- NEON ACCENTS
- CABINET SIGN
- MONUMENT SIGN
- PYLON SIGN
- PYLON PANEL (S) ONLY
- PLATE LETTERS
- OTHER
- SINGLE SIDED DOUBLE SIDED
- RACEWAY MOUNT
- FLUSH MOUNT
- INTERNALLY ILLUMINATED
- NEON ILLUMINATED
- NEON LED LAMPS
- 120 V TRANSFORMERS
- 30 M.A. 60 M.A.
- 120 V ADVANCE BALLASTS
- COMPUTER CUT GRAPHICS
- DIGITALLY PRINTED GRAPHICS
- .125 ALUMINUM ROUTED FACE
- PLEX FACE White
- PLEX BACKED
- PLEX FACE
- LEXAN FACE
- RETURN White
- TRIMCAP White
- RETAINERS
- MESSAGE CENTER
- BASE
- POLE COVER
- ADDRESS NUMBERS
- SPECIAL INFORMATION

APPROVAL / DATE

Printed artwork colors are not always representative of final product colors. Please refer to specifications for call out or salesman for samples
These drawings are the exclusive property of Bauer Sign Company. Not to be duplicated in any way without expressed written permission!

FINAL ELECTRICAL CONNECTION IS CLIENT'S RESPONSIBILITY

our products are certified by Underwriters Laboratories, Inc.

This sign shall be manufactured in accordance with Article 600 of the National Electrical Code and all other applicable codes. This includes proper grounding and bonding of the sign. Sign shall bear UL ETL LISTED MARKING.

New signage



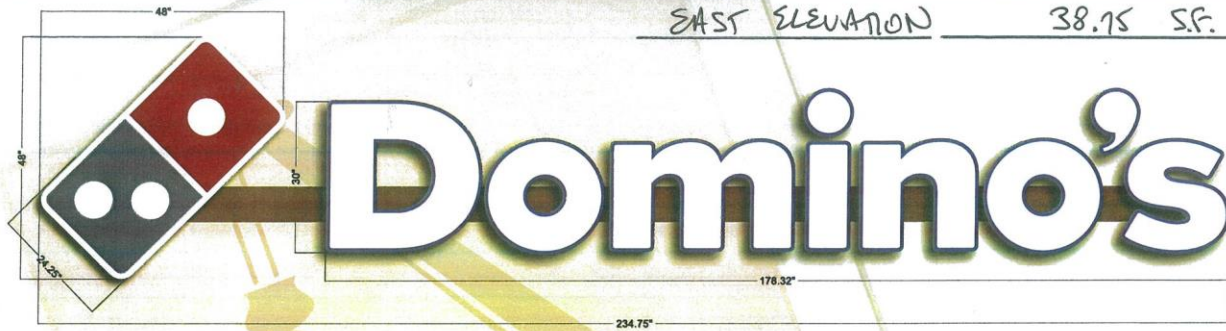
2500 South 170th Street
New Berlin, Wisconsin 53151
Proudly Made In the USA!

wire **bauersignusa.com**
voice **262.784.0500**
fax **262.784.6675**

Award Winning
Graphic Design



SAVED AS Domino's Pizza
LOCATION Milwaukee WI
CLIENT Forest Home Ave
SALES REP Bob Hacker
DATE 19 Oct 15
REVISION



SPECIFICATIONS

FABRICATE AND INSTALL (1SET) INTERNALLY ILLUMINATED, RACEWAY MOUNTED CHANNEL LETTERS.

- **FACES TO BE #7328 WHITE PLEXIGLASS SHEETED WITH 1" 3630-127 VINYL OVERLAYS**
- **LOGO MODULE FACE TO BE DECORATED WITH TRANSLUCENT VINYL OVERLAYS**
- **RETURNS TO BE .050X5" AND BACKS TO BE .063 ALUMINUM**
- **TRIMCAPS TO BE 1" BLUE (1" WHITE ON LOGO)**
- **EXTERIORS PAINTED BLUE LOGO EXTERIOR PAINTED WHITE**
- **INTERIORS PAINTED WHITE**
- **ILLUMINATED WITH WHITE LEDs**
- **POWERED WITH APPROPRIATE LOAD POWER SUPPLIES**
- **RACEWAY TO BE 7"x 4.5" x 19'0" AND PAINTED TBD**



Domino's Pizza channels
MILWAUKEE WI 1338 Forest Home Ave

DESIGNER Ryan Becht

FABRICATION

- CHANNEL LETTERS
- OPEN CHANNEL LETTERS
- REVERSE CHANNEL LETTERS
- NEON ACCENTS
- CABINET SIGN
- MONUMENT SIGN
- PYLON SIGN
- PYLON PANEL (S) ONLY
- PLATE LETTERS
- OTHER
- SINGLE SIDED DOUBLE SIDED
- RACEWAY MOUNT
- FLUSH MOUNT
- INTERNALLY ILLUMINATED
- NON ILLUMINATED
- NEON LED LAMPS
- 120 V TRANSFORMERS
- 30 M.A. 40 M.A.
- 120 V ADVANCE BALLASTS
- COMPUTER CUT GRAPHICS
- DIGITALLY PRINTED GRAPHICS
- .125 ALUMINUM ROUTED FACE
- PLEX FACE White
- PLEX BACKED
- FLEX FACE
- LEXAN FACE
- RETURN White
- TRIMCAP White
- RETAINERS
- MESSAGE CENTER
- BASE
- POLE COVER
- ADDRESS NUMBERS
- SPECIAL INFORMATION

APPROVAL / DATE

Printed artwork colors are not always representative of final product colors. Please refer to specifications for call out or salesman for samples

These drawings are the exclusive property of Bauer Sign Company. Not to be duplicated in any way without expressed written permission!

**FINAL ELECTRICAL
CONNECTION IS CLIENT'S
RESPONSIBILITY**



our products are certified by
Underwriters Laboratories, Inc.

This sign shall be manufactured in accordance with UL 900 (if the National Electrical Code and in the appropriate local code). This requires proper grounding and bonding of metal parts. Sign shall have correct labels.

New signage—two locations