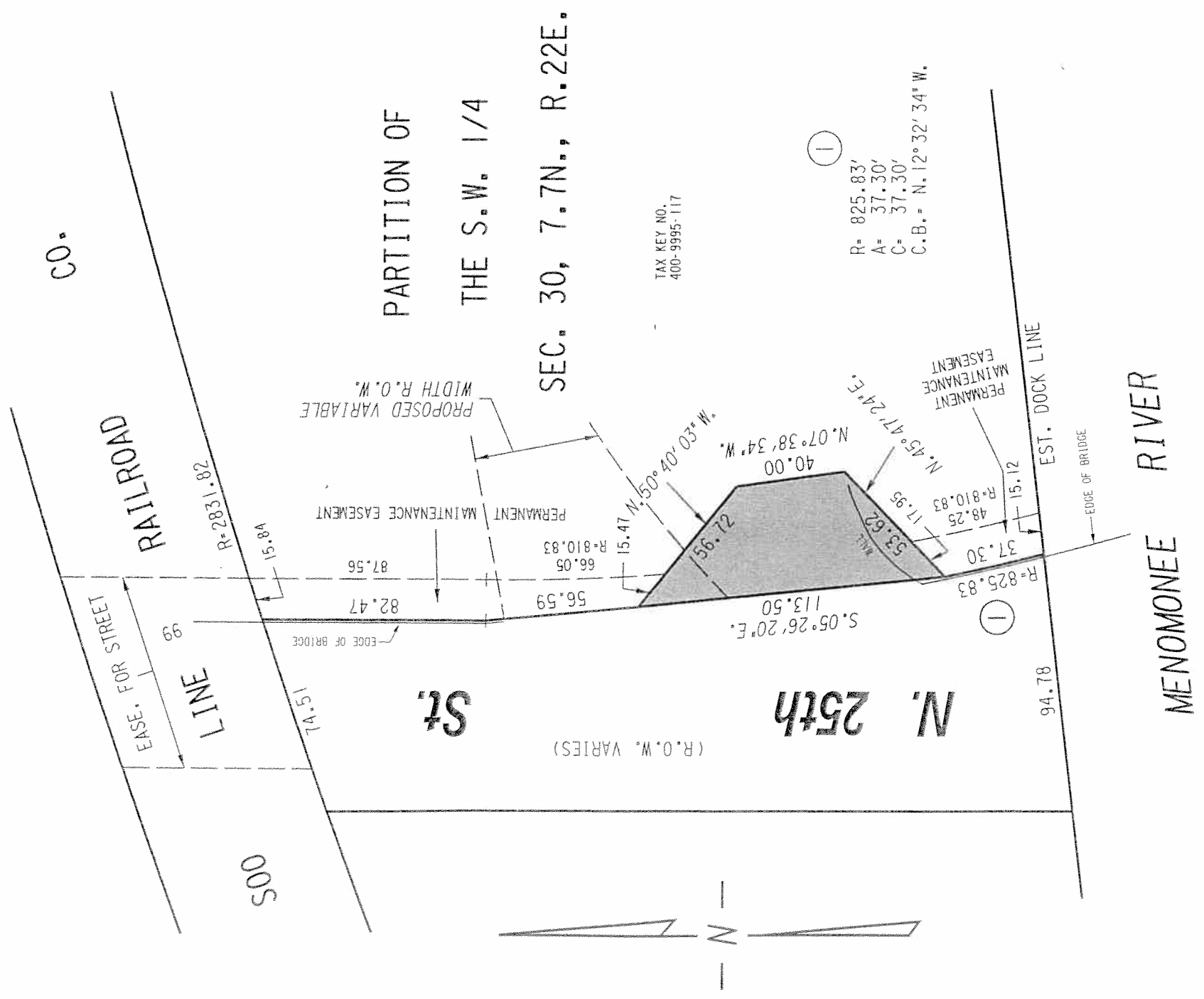


S.W. 1/4 SEC. 30, T.7N., R.22E.

400



PORTION OF PUBLIC STREET PROPOSED TO BE VACATED

EXHIBIT "A"
FILE NO. 100053
INFRASTRUCTURE SERVICES DIVISION

MILWAUKEE, WISCONSIN
ASSIGNED TO: W.E. FUCHS
CH'K'D. BY: W.E. FUCHS
DRAWN BY: W.E.F.
DATE: MAY 24, 2010
PROJECT/GRANT NO.: WK52337293
SCALE: 1" = 50'
APPROVED BY:

Marcia Connell
CENTRAL DRAFTING & RECORDS MANAGER
CIVIL ENGINEER