



Certificate of Appropriateness

Milwaukee Historic Preservation Commission/841 N Broadway/Milwaukee, WI 53202/phone 414-286-5712

**Property
Description of
work**

2001 W. Vliet Street

McKinley School

3'-0" X 6'-0" NON-ILLUMINATED SINGLE FACE MONUMENT SIGN READING "MCKINLEY APARTMENTS 1320 NORTH 21ST STREET". SIGN IS MADE OF A FABRICATED ALUMINUM CABINET WITH PAINTED, FLAT CUT OUT ALUMINUM LETTERS, AND PAINTED ADDRESS COPY.

Design and location on 21st Street per attached drawings.

Date issued

10/2/2023

Under the provisions of Section 320-21 (11) and (12) of the Milwaukee Code of Ordinances, the Milwaukee Historic Preservation Commission has granted a certificate of appropriateness for the work listed above. The work was found to be consistent with preservation guidelines. The following conditions apply to this certificate of appropriateness: n/a

All work must be done in a craftsman-like manner. Staff must approve any changes or additions to this certificate before work begins. Work that is not completed in accordance with this certificate may be subject to correction orders or citations. If you require technical assistance, please contact Historic Preservation staff as follows: Phone: (414) 286-5712 E-mail: hpc@milwaukee.gov.

Permits and timeline

You are responsible for determining if permits are required and obtaining them prior to commencing work. Consult the Development Center on the web or by telephone for details www.milwaukee.gov/lms (414) 286-8210. If permits are not required, work must be completed within one year of the date this certificate was issued. If permits are required, permits must be obtained within one year of the date this certificate was issued.

City of Milwaukee Historic Preservation

SIGN SPECIFICATIONS

[A] - CABINET

Lighting: Non-Lit
Material: Aluminum
Face Color: Paint Sherwin Williams Universal Khaki SW 6150
Cabinet Color: Paint Sherwin Williams Universal Khaki SW 6150
Installation: New Structure

[B] - NON-ILLUMINATED LETTERS

Description: FCO
Material: Aluminum
Depth: 1/4"
Face Color: Black [TBD]
Returns: Black [TBD]
Installation: Flush to monument

[C] - GRAPHICS

Material: Mask & Spray
Color: Paint Sherwin Williams Library Pewter SW 0038

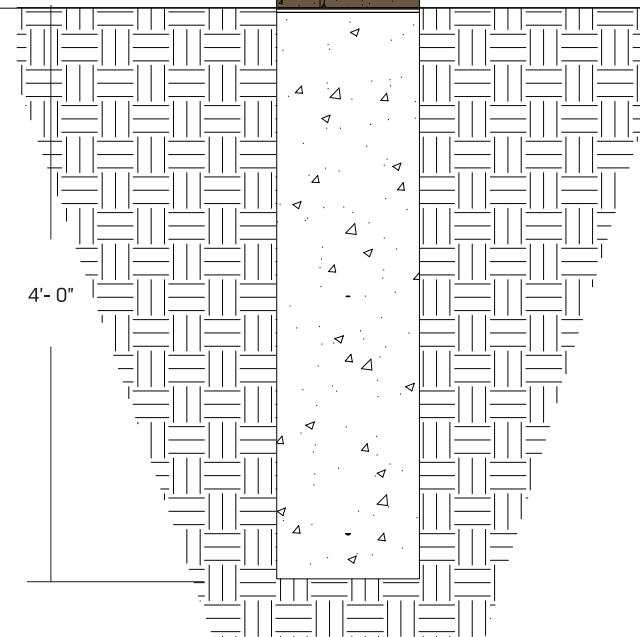
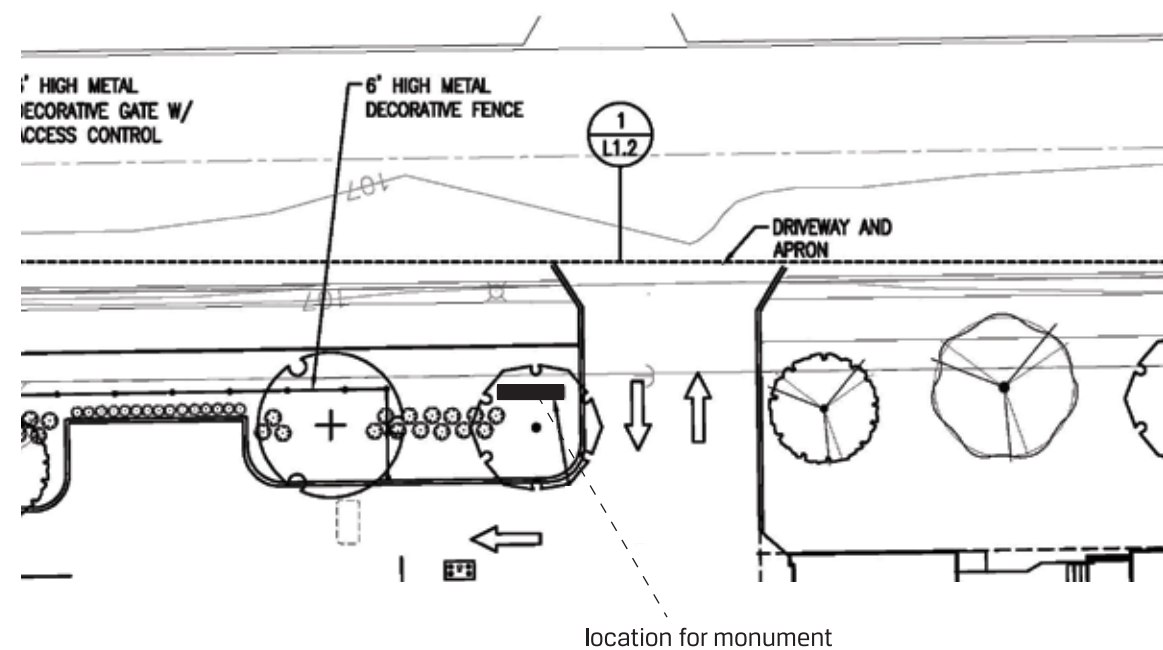
[D] - GRAPHICS

Material: Opaque Vinyl
Color: White 7725-20 [TBD]

[E] - BASE

Material: Masonry by others

APPROVED
 Tim Askin , 10/2/2023, 9:14:42 AM



This document is owned by and the information contained in it is proprietary to Poblockki Sign Company, LLC. By receipt hereof, the holder agrees not to use the information, disclose it to any third party or reproduce this document without the prior written consent of Poblockki Sign Company, LLC. Holder also agrees to immediately return this document upon request by Poblockki Sign Company, LLC.
 This document represents only an approximation of material colors specified. Actual product colors may vary from this print or digital image.

Project
McKinley Apartments
 Milwaukee, Wisconsin

Scale: 3/4"=1'
 Original Page Size: 11" x 17"

Notes
ARTWORK REQUIRED
COLORS [TBD]

Revisions

REV	DESCRIPTION	BY	DATE
01	update colors	seb	04.04.23
02	update logo	seb	04.21.23

Rep.: Dan Schumann Orig. Date: 03/29/23
 Drawn By: Sarah Biagioni

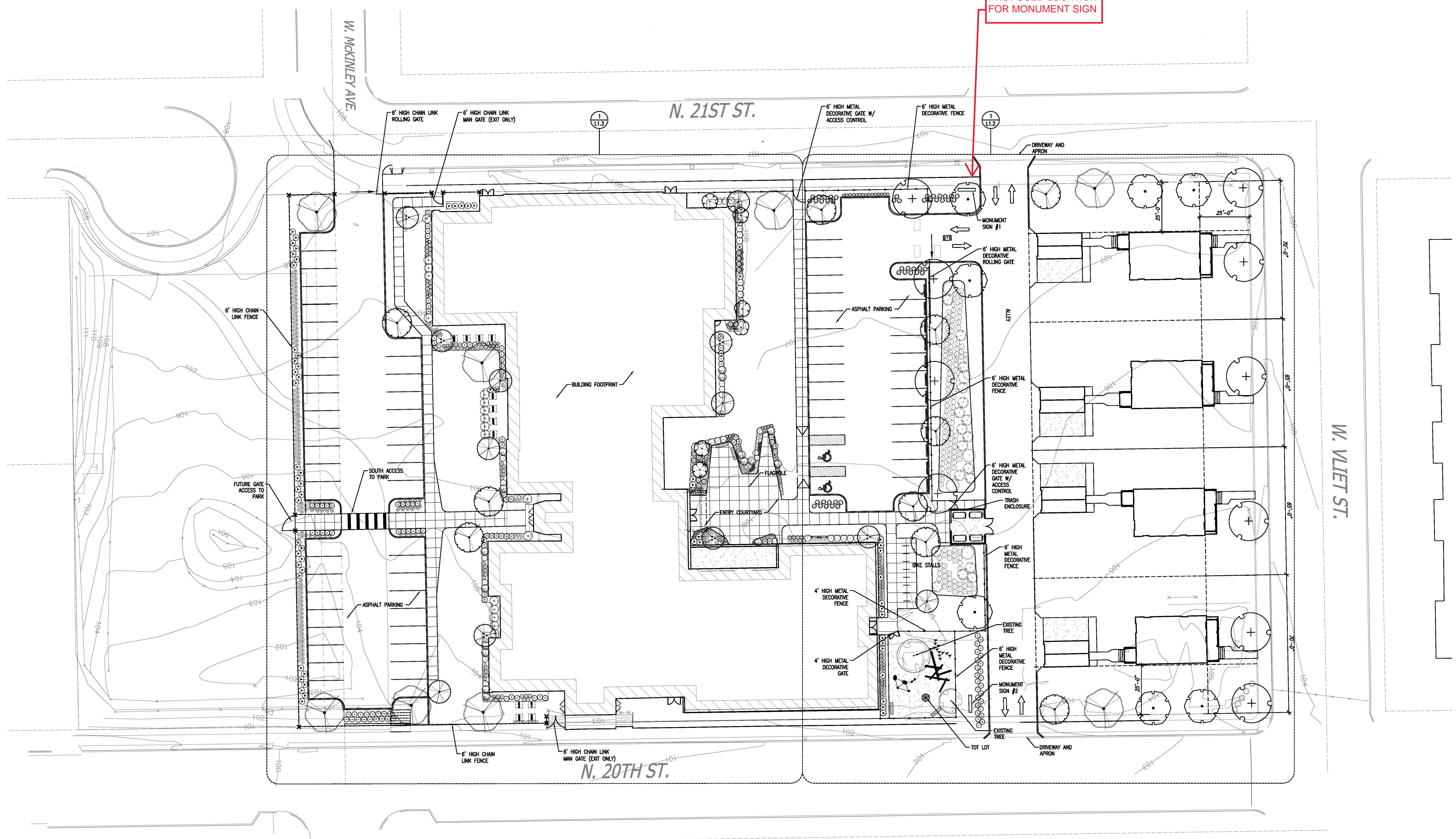
Sign Loc. No. .

MON-01
 S/F Monument
 Sign Type

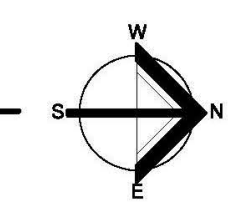
95520 **CO1**
 OPP - Project - Job No. Design

APPROVED
 Tim Askin, 10/2/2023, 9:14:30 AM

**PROPOSED LOCATION
 FOR MONUMENT SIGN**



1 SITE PLAN
 SCALE: 1" = 20'-0"



Nov 20, 2020 10:37am 53205m
 03.11.18 PROJECT 10031-06 McKinley School Renovation (DWG) 10031-06-L1-1.dwg